

Scotsman MC0830-800lb Cube Ice Machine



Scotsman MC0830-800lb Cube Ice Machine Owner's Manual

[Home](#) » [Scotsman](#) » Scotsman MC0830-800lb Cube Ice Machine Owner's Manual 

Contents

- [1 Scotsman MC0830-800lb Cube Ice Machine](#)
- [2 Product Information](#)
- [3 Product Usage Instructions](#)
- [4 FAQ](#)
- [5 INSTRUCTION](#)
- [6 24 Hour Volume Production](#)
- [7 Modular Bin Options](#)
- [8 Certification](#)
- [9 Warranty](#)
- [10 DIMENSION](#)
- [11 Specifications](#)
- [12 All Models](#)
- [13 Accessories](#)
- [14 Operating Requirements](#)
- [15 Documents / Resources](#)
 - [15.1 References](#)

Scotsman®

Scotsman MC0830-800lb Cube Ice Machine



Product Information

Specifications:

- **Model Number:** MC0830
- **Ice Machine Type:** Cube Ice Machine
- **Capacity:** 800lb (363kg)
- **Cooling Method:** Air-cooled or Water-cooled
- **Remote Option:** Yes
- **Bin Options:** B530S or P, B842S, B948S
- **Dimensions (W x D x H):**
 - **MC0830 with B530S or P:** 30 x 34 x 50 inches (76.2 x 86.4 x 127 cm)
 - **MC0830 with B842S:** 42 x 34 x 44 inches (106.7 x 86.4 x 111.8 cm)
 - **MC0830 with B948S:** 48 x 34 x 50 inches (121.9 x 86.4 x 127 cm)
- **Bin Application Capacity:**
 - **B530S or P:** 536lb (244kg)
 - **B842S:** 778lb (353kg)
 - **B948S:** 893lb (406kg)
- **Finish:** Metallic or Poly
- **Ship Weight:**
 - **B530S or P:** 150lb (68kg)
 - **B842S:** 190lb (86kg)
 - **B948S:** 209lb (95kg)
- **Cube Ice Sizes:**
 - **Small Cube:** 7/8 x 7/8 x 3/8 inches (2.22 x 2.22 x 0.95 cm)
 - **Medium Cube:** 7/8 x 7/8 x 7/8 inches (2.22 x 2.22 x 2.22 cm)

- **Certification:** Designed, Engineered, and Assembled in the USA
- **Warranty:** Contact Scotsman for warranty information

Product Usage Instructions

Installation:

1. Choose a suitable location for the ice machine.
2. Ensure proper electrical and water connections are available.
3. If using a remote condenser, connect the discharge line and intake air properly.
4. Place the ice machine on a level surface.
5. Install the chosen bin option according to the provided instructions.

Operation:

1. Turn on the main power switch of the ice machine.
2. Set the desired cube size (small or medium) using the control panel.
3. Monitor the AutoAlert™ panel for relevant machine status and bin full indicator light.
4. Regularly clean and replace the removable, external air filters to maintain optimal performance.
5. Optimize water consumption by enabling WaterSense Adaptive Purge feature.

Cleaning and Maintenance:

1. Regularly clean the ice machine and bin according to the provided cleaning instructions.
2. Inspect and clean the condenser coils to ensure efficient operation.
3. Replace any worn-out parts or filters as needed.

FAQ

- **Q: What is the capacity of the MC0830 Cube Ice Machine?**

A: The MC0830 Cube Ice Machine has a capacity of 800lb (363kg).

- **Q: What are the available cube sizes?**

A: The MC0830 Cube Ice Machine can produce small cubes (7/8 x 7/8 x 3/8 inches) or medium cubes (7/8 x 7/8 x 7/8 inches).

- **Q: Is the ice machine air cooled or water cooled?**

A: The MC0830 Cube Ice Machine is available in both air cooled and water cooled versions.

- **Q: Are there any remote options available?**

A: Yes, the MC0830 Cube Ice Machine is available with a remote option for the condenser.

INSTRUCTION

ENHANCED RELIABILITY

- **Integrated ICELINQ® App**

Provides real-time diagnostics, access to settings and guided cleanings. The app also contains specific information for convenient maintenance.

• **Upgraded Sensors**

Ice thickness and water sensor design enhances cleanability and amplifies durability.

• **Preservation Mode**

Maximizes uptime and notifies users of potential issues.

EASE OF USE

• **AutoAlert™ Panel**

The AutoAlert™ panel displays relevant machine status that is visible across the room. Now featuring an external bin full indicator light and easier to read 16-segment display.

SANITARY DESIGN

• **Removable, External Air Filters**

Speeds up cleaning process and reduces unit footprint.

• **WaterSense Adaptive Purge**

Optimizes water consumption, keeping the machine cleaner and operating more efficiently.

24 Hour Volume Production

Air Cooled			Remote			Water Cooled		
70°F/21°C 50°F/10°C	Air Water	90°F/32°C 70°F/21°C	70°F/21°C 50°F/10°C	Air Water	90°F/32°C 70°F/21°C	70°F/21°C 50°F/10°C	Air Water	90°F/32°C 70°F/21°C
905/411 lb/kg		718/326 lb/kg	870/395 lb/kg		780/355 lb/kg	924/420 lb/kg		832/378 lb/kg



The ICELINQ® app simplifies interaction with machine via Bluetooth® connection



Intelligent sensor technology maximizes efficiency and lowers operating costs

Modular Bin Options



B842S

Model Number*	Dimensions W" x D" x H"	Bin Application Capacity lb/kg	Finish	Ship Weight lb/kg
B530S or P	30 x 34 x 50	536/244	Metallic or Poly	150/68
B842S	42 x 34 x 44	778/353	Metallic	190/86
B948S	48 x 34 x 50	893/406	Metallic	209/95

* Contact Scotsman for bin top requirements.

Cube Ice

Common ice form, ideal for mixed drinks.



Small Cube
7/8" x 7/8" x 3/8"
(2.22 x 2.22 x .95 cm)



Medium Cube
7/8" x 7/8" x 7/8"
(2.22 x 2.22 x 2.22 cm)

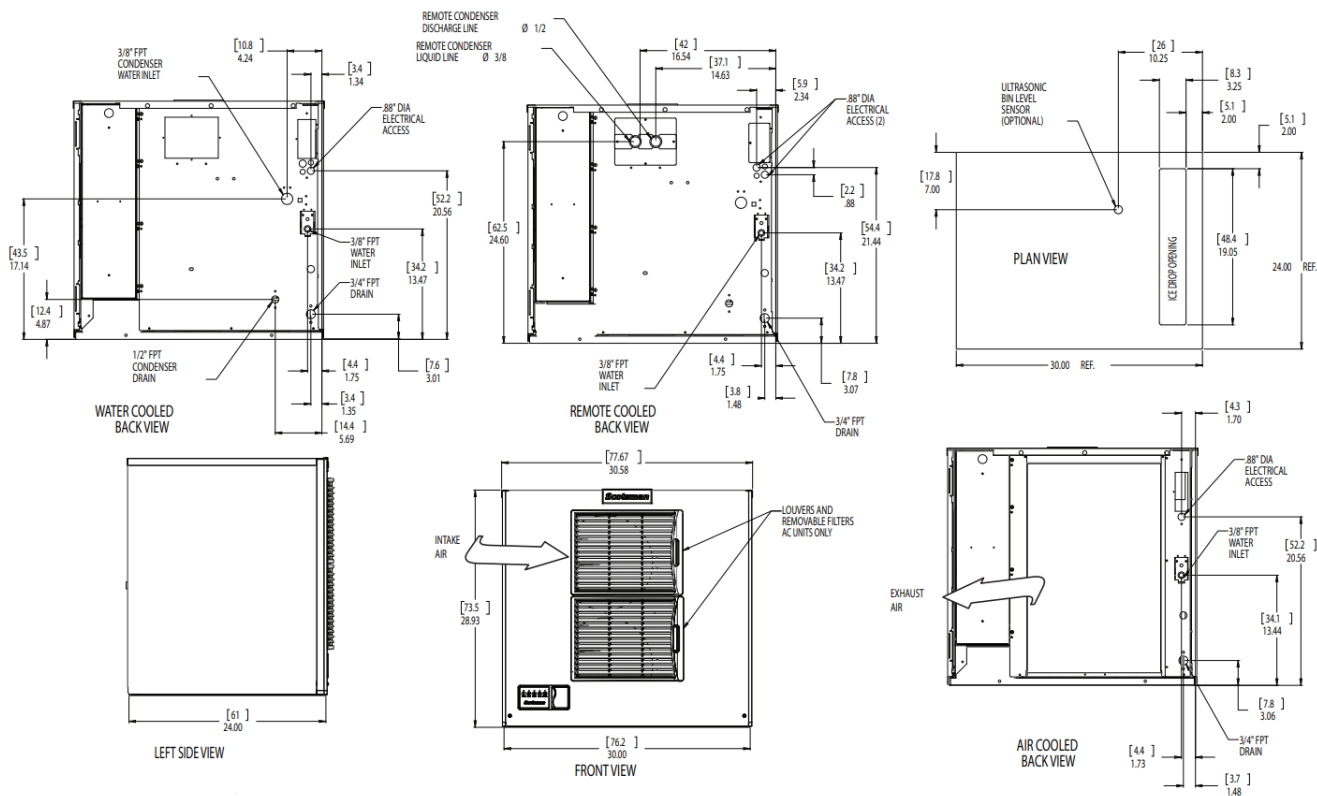
Certification



Warranty

- 3 Years parts and labor on all components.
- 5 Years parts and labor on the evaporator.
- 5 Years parts on the compressor and condenser.
- Warranty valid in North, South & Central America for commercial installations.
- Contact factory for warranty in other regions.
- Residential Applications: 1 year parts and labor

DIMENSION



Specifications

								Water Usage	
Model Number		Condenser Unit	Basic Electrical Volts/Hz/Phase	Max. Fuse Size or HACR Circuit Breaker (amps)	Circuit Wires	Min. Circuit Ampacity	Energy Consumption kWh/100 lb (45.4 kg) 90°F(32°C)/70°F(21°C)	Potable Gallons/100 lb (liters/45.4 kg) 90°F(32°C)/70°F(21°C)	Condenser Gallons/100 lb (liters/45.4 kg) 90°F(32°C)/70°F(21°C)
Cube Size: medium or small									
med.	MC0830MA-3	Air	208-230/60/3	15	3	8.4	4.99	18.0/68.2	-
	MC0830MA-32	Air	208-230/60/1	15	2	10.2	4.99	18.0/68.2	-
	MC0830MR-32	Remote	208-230/60/1	15	2	10.0	4.70	18.4/69.8	-
	MC0830MW-32	Water	208-230/60/1	15	2	9.0	4.00	18.9/71.7	136.0/515.7
sm.	MC0830SA-3	Air	208-230/60/3	15	3	8.4	4.99	18.0/68.2	-
	MC0830SA-32	Air	208-230/60/1	15	2	10.2	4.99	18.0/68.2	-
	MC0830SR-32	Remote	208-230/60/1	15	2	10.0	4.70	18.4/69.8	-
	MC0830SW-32	Water	208-230/60/1	15	2	9.0	4.00	18.9/71.7	136.0/515.7

All Models

• Dimensions (W x D x H):

- **Unit:** 30" x 24" x 29" (76.2 x 61.0 x 73.7 cm)
- **Shipping Carton:** 33.5" x 27.5" x 34" (85.1 x 69.9 x 86.4 cm)
- **Shipping Weight:** 220 lb / 100 kg
- **BTUs per hour:** 13,700
- **Refrigerant:** R-404A

Accessories

Model Number	Description
KVS	Vari-Smart™ Ice Level Control - Precisely control ice levels using ultrasonic technology.
KBILC	Basic Ice Level Control - Thermistor technology, ideal for dispenser applications.
KSBU	Smart-Board™ Advanced Control - Use additional operational data for fast diagnosis.
KSBU-N	Smart-Board™ Advanced Control with Network - Network capable.
ERC311-32	Remote condenser for MC0830xR, 208-230/60/1- Consult remote condenser spec sheet for details.
BRTE10	10ft (3.0 m) line set, brazing required
BRTE25	25ft (7.6 m) line set, brazing required
BRTE40	40ft (12.2 m) line set, brazing required
BRTE75	75ft (22.9 m) line set, brazing required
KPAS	Prodigy Advanced Sustainability Kit - Includes KVS and KSBU - N
XR-30	XSafe® Sanitation System for Modular Cube - Continuous operation, field-installed.

Scotsman recommends all ice machines have water filtration. See Scotsman water filter specification sheet for details.

Operating Requirements

	Minimum	Maximum
Air Temperatures	50°F (10°C)	100°F (38°C)
Water Temperatures	40°F (4.4°C)	100°F (38°C)
Remote Cond. Temps	-20°F (-29°C)	120°F (49°C)
Potable Water Pressure	20 PSIG (1.4 bar)	80 PSIG (5.5 bar)
Cond. Water Pressure	20 PSIG (1.4 bar)	230 PSIG (16.1 bar)
Electrical Voltage	-5%	+10%


101 Corporate Woods Parkway, Vernon Hills, IL 60061

1-800-SCOTSMAN | Fax: 847-913-9844 | www.scotsman-ice.com

customer.relations@scotsman-ice.com

© 2022 Scotsman Ice Systems.

Documents / Resources

	<p>Scotsman MC0830-800lb Cube Ice Machine [pdf] Owner's Manual</p> <p>MC0830-800lb, MC0830-800lb Cube Ice Machine, Cube Ice Machine, Ice Machine, Machine</p>
---	---

References

- [ICE](#)
- [Scotsman Ice Systems](#)
- [User Manual](#)