




# Scotsman MC0530 – 500lb Cube Ice Machine User Manual

[Home](#) » [Scotsman](#) » Scotsman MC0530 – 500lb Cube Ice Machine User Manual 

## Contents

- [1 Scotsman MC0530 – 500lb Cube Ice Machine](#)
- [2 Product Information](#)
- [3 Product Usage Instructions](#)
- [4 ENHANCED RELIABILITY](#)
- [5 EASE OF USE](#)
- [6 Modular Bin Options](#)
- [7 Warranty](#)
- [8 Specifications](#)
- [9 All Models](#)
- [10 Accessories](#)
- [11 Operating Requirements](#)
- [12 Features](#)
- [13 Dimensions](#)
- [14 CONTACT](#)
- [15 Documents / Resources](#)
  - [15.1 References](#)

# Scotsman®

**Scotsman MC0530 – 500lb Cube Ice Machine**



## Product Information

The MC0530 – 500lb Cube Ice Machine is a reliable and easy-to-use ice machine designed for commercial use. It features enhanced reliability, ease of use, and a sanitary design. The machine includes an AutoAlert™ panel that displays relevant machine status, including an external bin full indicator light and a 16-segment display for easier reading. The removable, external air filters speed up the cleaning process and reduce the unit's footprint. The WaterSense Adaptive Purge optimizes water consumption, keeping the machine cleaner and operating more efficiently. Intelligent sensor technology maximizes efficiency and lowers operating costs. The machine has a 24-hour volume production capacity of 500lb and is available in air-cooled or water-cooled options. It also offers modular bin options for additional storage capacity.

## Product Usage Instructions

1. Ensure that the machine is properly installed and connected to the appropriate power source.
2. If using a remote condenser, make sure it is properly connected to the machine.
3. Check the water inlet and drain connections to ensure proper flow.
4. Choose the desired cube size (medium or small) by adjusting the settings on the machine.
5. Monitor the AutoAlert™ panel for machine status and ensure that the bin is not full.
6. If necessary, clean the external air filters regularly to maintain optimal performance.
7. Monitor water consumption and adjust settings if needed to optimize efficiency.
8. Refer to the modular bin options for additional storage capacity if required.
9. If experiencing any issues or for warranty information, contact Scotsman at 1-800-SCOTSMAN or visit their website at [www.scotsman-ice.com](http://www.scotsman-ice.com).

## ENHANCED RELIABILITY

### Integrated ICELINQ® App

- Provides real-time diagnostics, access to settings, and guided cleanings.
- The app also contains specific information for convenient maintenance.

### Upgraded Sensors

- Ice thickness and water sensor design enhance cleanability and amplify durability.

**Preservation Mode**

- Maximizes uptime and notifies users of potential issues.

**EASE OF USE**

**AutoAlert™ Panel**

- The AutoAlert™ panel displays relevant machine status that is visible across the room.
- Now features an external bin full indicator light and easier to-read 16-segment display.

**SANITARY DESIGN**


**Removable, External Air Filters**

- Speeds up the cleaning process and reduces unit footprint.

**WaterSense Adaptive Purge**

- Optimizes water consumption, keeping the machine cleaner and operating more efficiently.

**24-Hour Volume Production**



Air Cooled			Remote			Water Cooled		
70°F/21°C 50°F/10°C	Air Water	90°F/32°C 70°F/21°C	70°F/21°C 50°F/10°C	Air Water	90°F/32°C 70°F/21°C	70°F/21°C 50°F/10°C	Air Water	90°F/32°C 70°F/21°C
525/238 lb/kg		380/172 lb/kg	500/227 lb/kg		400/181 lb/kg	500/227 lb/kg		410/186 lb/kg

**Modular Bin Options**



Model  
Number\*

Dimensions  
W" x D" x H"

Bin Application  
Capacity  
lb/kg

Finish

Ship Weight  
lb/kg

B330P  
B530S or P

30 x 34 x 36  
30 x 34 x 50

344/156  
536/244

Poly  
Metallic or Poly

130/59  
150/68

## Cube Ice



Common ice form, ideal for mixed drinks.



Small Cube

7/8" x 7/8" x 3/8"  
(2.22 x 2.22 x .95 cm)





Medium Cube

7/8" x 7/8" x 7/8"  
(2.22 x 2.22 x 2.22 cm)

## Certification



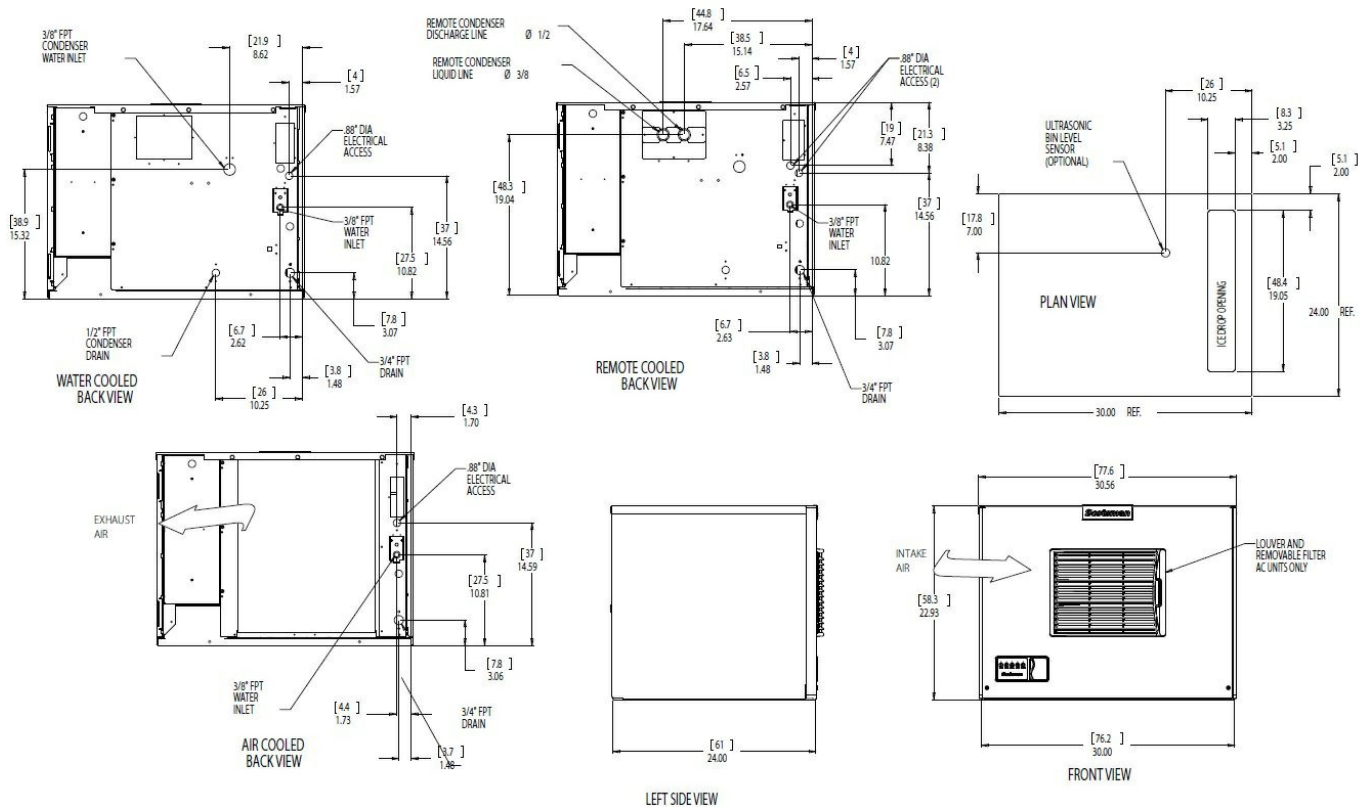
-  The ICELINQ® app simplifies interaction with the machine via Bluetooth® connection
-  Intelligent sensor technology maximizes efficiency and lowers operating costs

## Warranty

- 3 Years of parts and labor on all components.
- 5 Years of parts and labor on the evaporator.
- 5 years of parts on the compressor and condenser.
- Warranty valid in North, South & Central America for commercial installations.
- Contact the factory for warranty in other regions.
- Residential Applications: 1-year parts and labor.

## MC0530 – 500lb Cube Ice Machine

- Prodigy ELITE® Modular Cube Ice Machine



## Specifications



							Water Usage		
Model Number	Condenser Unit	Basic Electrical	Max. Fuse Size			Energy Consumption	Gallons/100 lb (liters/45.4 kg)		
Cube Size: medium or small		Volts/Hz/Phase	or HACR Circuit Breaker (amps)	Circuit Wires	Min. Circuit Ampacity	kWh/100 lb (45.4 kg) 90°F(32°C)/70°F(21°C)	Potable 90°F(32°C)/70°F(21°C)	Condenser 90°F(32°C)/70°F(21°C)	
med.	MC0530MA-1	Air	115/60/1	20	2	15.2	5.80	18.0/68.1	-
	MC0530MR-1	Remote	115/60/1	20	2	16.2	6.50	18.0/68.1	-
	MC0530MW-1	Water	115/60/1	15	2	13.5	5.00	18.0/68.1	160.0/606.7
	MC0530MA-32	Air	208-230/60/1	15	2	7.8	5.80	18.0/68.1	-
sm.	MC0530SA-1	Air	115/60/1	20	2	15.2	5.80	18.0/68.1	-
	MC0530SR-1	Remote	115/60/1	20	2	16.2	6.50	18.0/68.1	-
	MC0530SW-1	Water	115/60/1	15	2	13.5	5.00	18.0/68.1	160.0/606.7
	MC0530SA-32	Air	208-230/60/1	15	2	7.8	5.80	18.0/68.1	-



## All Models

### Dimensions (W x D x H)

- **Unit:** 30" x 24" x 23" (76.2 x 61.0 x 58.4 cm)
- **Shipping Carton:** 33.5" x 27.5" x 28" (85.1 x 69.9 x 71.1 cm)
- **Shipping Weight:** 175 lb / 80 kg
- **BTUs per hour:** 7,900
- **Refrigerant:** R-404A



## Accessories

### Model Number Description

- KVS Vari-Smart™ Ice Level Control – Precisely control ice levels using ultrasonic technology.
- KBILC Basic Ice Level Control – Thermistor technology, ideal for dispenser applications.
- KSBUSmart-Board™ Advanced Control – Use additional operational data for fast diagnosis.
- KSBUS-N Smart-Board™ Advanced Control with Network – Network capable.
- ERC111-1 Remote condenser for MC0530xR, 115/60/1- Consult remote condenser spec sheet for details.
- BRTE10 10ft (3.0 m) line set, brazing required
- BRTE25 25ft (7.6 m) line set, brazing required
- BRTE40 40ft (12.2 m) line set, brazing required
- BRTE75 75ft (22.9 m) line set, brazing required
- KPAS Prodigy Advanced Sustainability Kit – Includes KVS and KSBUS – N
- XR-30 XSafe® Sanitation System for Modular Cube – Continuous operation, field-installed.

Scotsman recommends all ice machines have water filtration. See Scotsman water filter specification sheet for details.



## Operating Requirements

### Minimum Maximum

- Air Temperatures 50°F (10°C) 100°F (38°C)
- Water Temperatures 40°F (4.4°C) 100°F (38°C)
- Remote Cond. Temp ps -20°F (-29°C) 120°F (49°C)
- Potable Water Pressure 20 PSIG (1.4 bar) 80 PSIG (5.5 bar)
- Cond. Water Pressure 20 PSIG (1.4 bar) 230 PSIG (16.1 bar)
- Electrical Voltage -5% +10%

Specifications and design are subject to change without notice.

## Features

- New sleek, contemporary styling. A perfect match to Prodigy Plus cube ice machines and other Scotsman ice machines.
- Convenient, built-in scoop holder.
- Easily removable baffle, no tools required for cleaning.
- Lightweight.
- Unique recessed drain fitting for maximum installation flexibility.
- Corrosion resistant.
- Spring-loaded door with hidden hinges for easy opening and closing (except for B230P).
- Available in metallic finish or durable roto cast plastic.
- Ice scoop included.





B530S show with optional KLP8S legs.

## Certification



## Storage Capacity





B322S	B330P	B530P/S	B842S	B948S
Application Capacity	Application Capacity	Application Capacity	Application Capacity	Application Capacity
370/168 lb/kg	344/156 lb/kg	536/244 lb/kg	778/353 lb/kg	893/406 lb/kg

Application capacity is based on 90% of total volume in cubic feet x 34 lb/ft<sup>3</sup>



### Polyurethane Insulation

- Foam insulation is forced between the wall and liner under heat and pressure to form a perfect wall-to-wall bond, preserving ice supply for long periods.



### Bin Interior

- The polyethylene bin interior is sanitary and easy to clean. Resists scratches and scuffs from ice scoops.

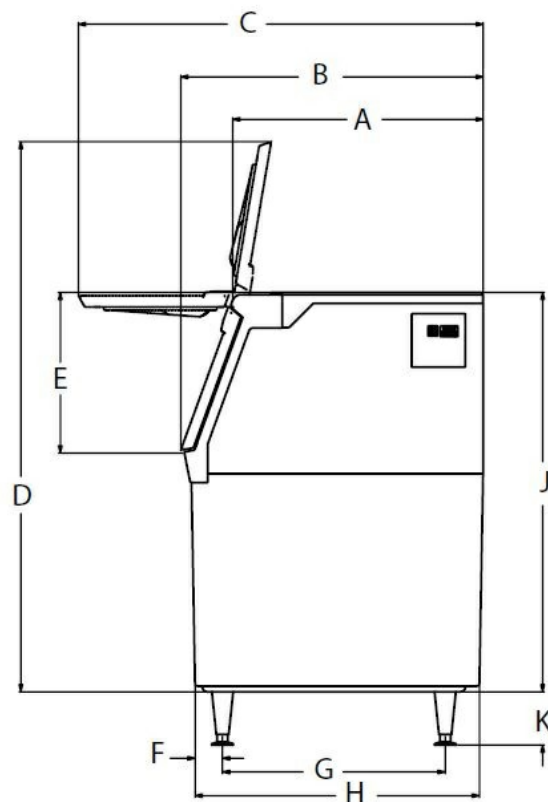
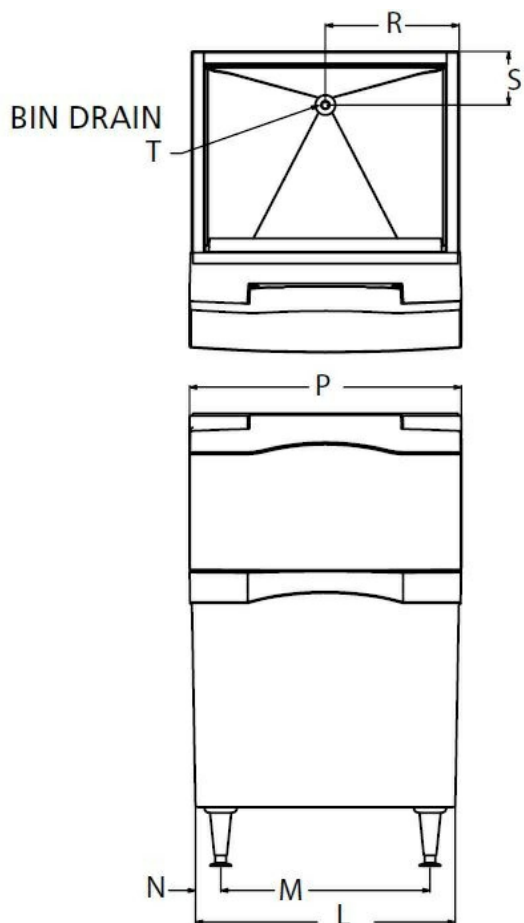


### Warranty

- 3 years of parts and labor on all components.
- Warranty valid in North, South & Central America for commercial installations.
- Contact the factory for warranty in other regions.
- Residential Applications: 1-year parts and labor.

### Dimensions

- Installation Note: Allow 6" space at the back for utility connections.



## Dimensions



Model #	A	B	C	D	E	F	G	H	J	K	L	M	N	P	R	S	T
B322S	28.23	34	45.5	61.24	18	3.88	25	32.75	44	6	22	15.5	3.25	22.5	11	6	.75 NPT
B330P	28.15	34	45.5	47.24	18	3.33	25	32.42	31	6	30	23.5	3.08	30.5	15	6	.75 NPT
B530P/S	28.15	34	45.5	61.24	18	3.09	25	31.93	44	6	30	23.5	2.83	30.5	15	6	.75 NPT
B842S	28.07	34	45.5	61.87	18	3.88	25	32.75	44	6	42	35.5	3.25	42.5	21	6	.75 NPT
B948S	28.05	34	45.5	61.24	18	3.88	25	32.75	44	6	48	41.5	3.25	48.5	24	6	.75 NPT

## Overall Dimensions



Model #	Carton (W x D x H)*
B322S	22" x 34" x 44"
B330P	30" x 34" x 31"
B530P	30" x 34" x 44"
B530S	30" x 34" x 44"
B842S	42" x 34" x 44"
B948S	48" x 34" x 44"

## Shipping Information



Model #	Carton (W x D x H)	Weight (lb/kg)
B322S	26" x 36" x 49"	140/64
B330P	33" x 36" x 35"	90/41
B530P	33" x 37" x 49"	110/50
B530S	33" x 37" x 49"	150/68
B842S	45" x 36" x 49"	190/86
B948S	51" x 36" x 49"	209/95



## Accessories\*

### Model Number Description


- KBC1 Kit, bit casters for B530S, B842S, B948S and SB380.\*\* Not for use with B322S or SB480 when using extensions.
- KBC1P Kit, bin casters for B330P and B530P.\*\*
- KLP7 Kit, legs, 6", flanged feet, for B bins, HD dispensers, AFE, CU1/2/3, and NSE.
- KLP8S Kit, legs, 6", stainless steel, for B bins, HD dispensers, AFE, CU1/2/3, and NSE.
- BGS10 Bagger, hooks on any bin.
- KBAG Kit, bags, 1000, for BGS10.
- KSEALER Kit, tape sealer, for BGS10.
- KTAPE Kit, tape, 180 ft. roll, for BGS10.
- KHOLDER Kit, scoop holder, stainless steel.

\*\*3.5" Diameter, 2 locking, raises bin 4.5".

## CONTACT

- 101 Corporate Woods Parkway, Vernon Hills, IL 60061
  - 1-800-SCOTSMAN Fax: 847-913-9844
  - [www.scotsman-ice.com](http://www.scotsman-ice.com). [customer.relations@scotsman-ice.com](mailto:customer.relations@scotsman-ice.com).
  - © 2020 Scotsman Ice Systems.
- 

## Documents / Resources

	<p><a href="#">Scotsman MC0530 - 500lb Cube Ice Machine</a> [pdf] User Manual MC0530 - 500lb Cube Ice Machine, MC0530 - 500lb, Cube Ice Machine, Ice Machine</p>
---	--

## References

-  [ICE](#)
-  | [Scotsman Ice Systems](#)