

Scotsman ICS730 Ice Machine Instructions



Instructions for the placement of a Scotsman ice machine on a **ICS730, ICS1360, ICS1790** ice cart systems.

Contents

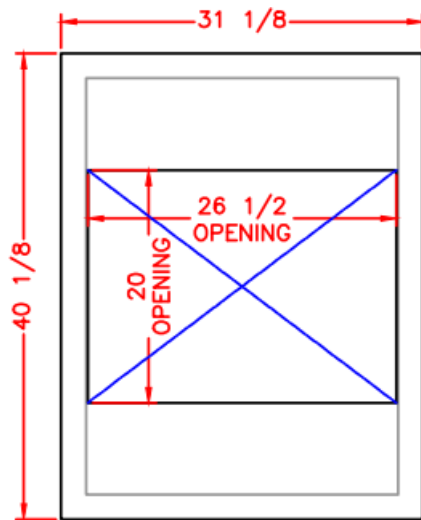
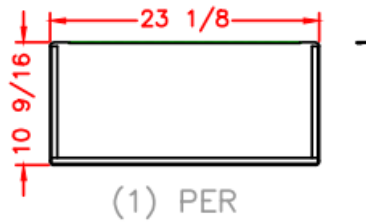
- [1 Overview](#)
- [2 Installation](#)
 - [2.1 ICS730, ICS1360, ICS1790 Bin Top Installation Instructions](#)
- [3 ICS730](#)
- [4 ICS1360](#)
- [5 ICS1790](#)
- [6 Documents / Resources](#)
 - [6.1 References](#)
- [7 Related Posts](#)

Overview

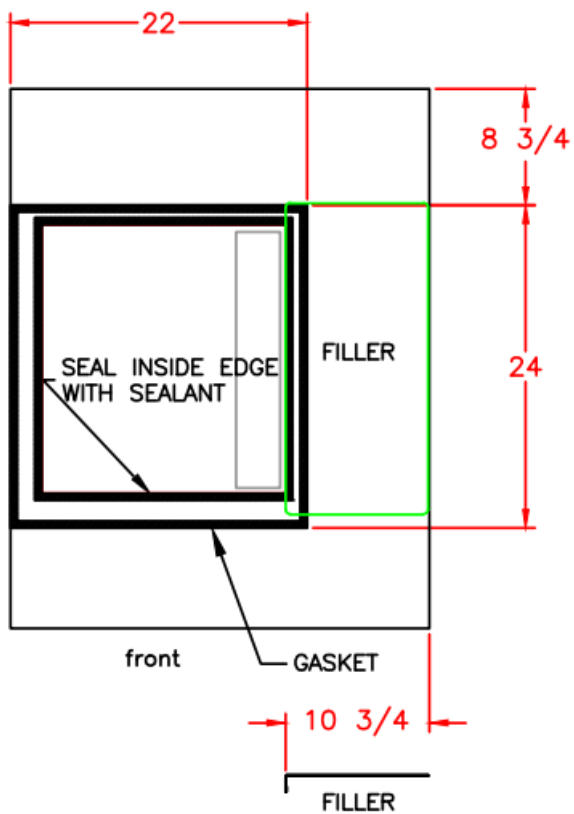
The bin top is secured to the bin at the factory and has a large opening that must be covered by ice machine(s), filler panel(s) and/or coverplate. Each bin ships with the appropriate coverplate, filler panels, gasket, and sealant to support most Scotsman ice machines. The general procedure for installing the top is the same for all applications, however coverplate, filler panel, and gasket placement varies by bin/machine configuration.

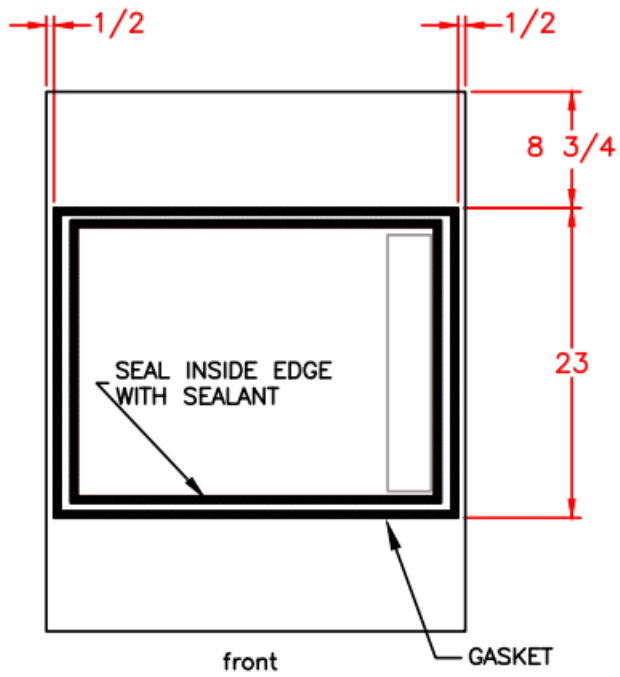
Installation

1. Identify appropriate drawing for the specific ice machine and bin configuration using the table on page 2.
2. Position filler panel(s) according to location noted on appropriate drawing.
3. Peel paper backing from adhesive portion of filler panel(s) and apply to bin top.
4. Apply inner gasket around perimeter of ice drop opening. Do not overlap gasket.
5. Position and apply outer gasket according to location noted on appropriate drawing.
6. Apply sealant to inside edge of inner gasket that will seal machine and to bin.
7. Carefully position ice maker onto bin.

Bin top and opening:**Filler Panel:****Also included:**

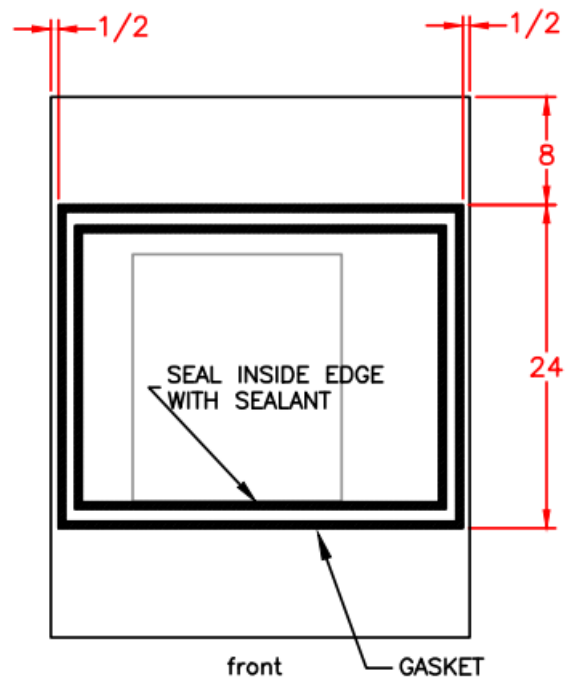
- Self adhesive gasket
- Sealant

ICS730 – Single 22" Cuber**ICS730 – Single 30" Cuber**



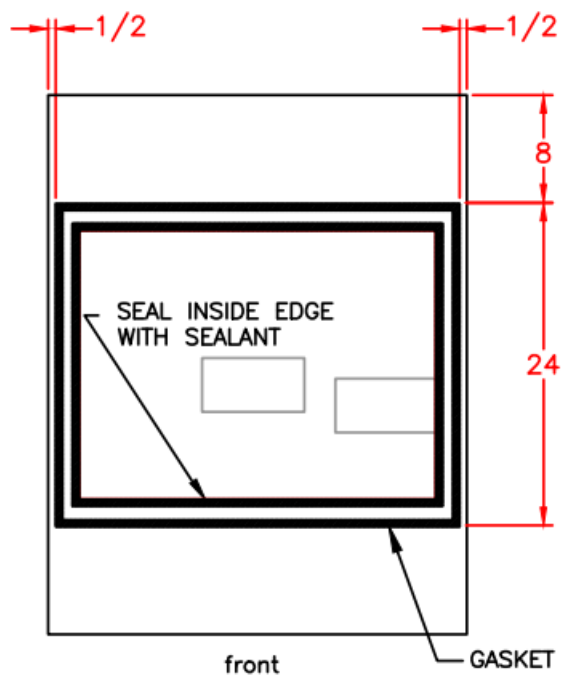
NO FILLER PANEL REQUIRED

ICS730 – Single EH330/430 or MC330L/430



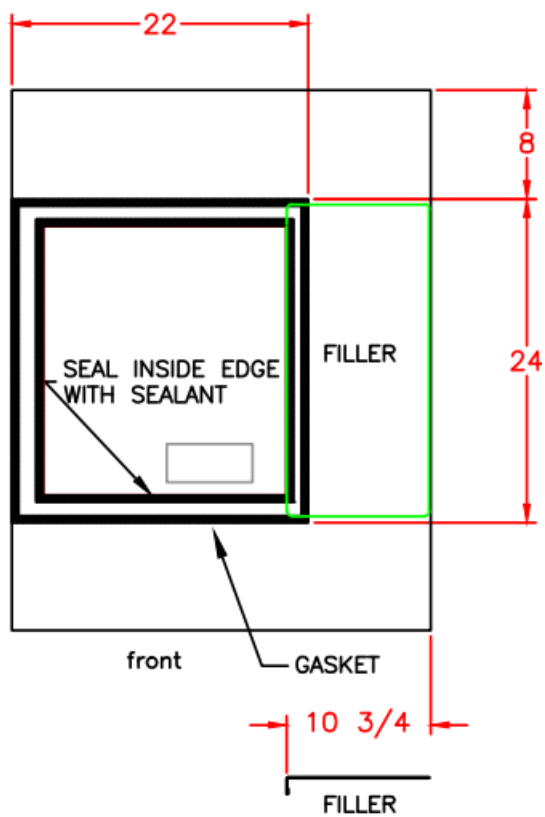
NO FILLER PANEL REQUIRED

ICS730 – Single 30" Flake or Nugget



NO FILLER PANEL REQUIRED

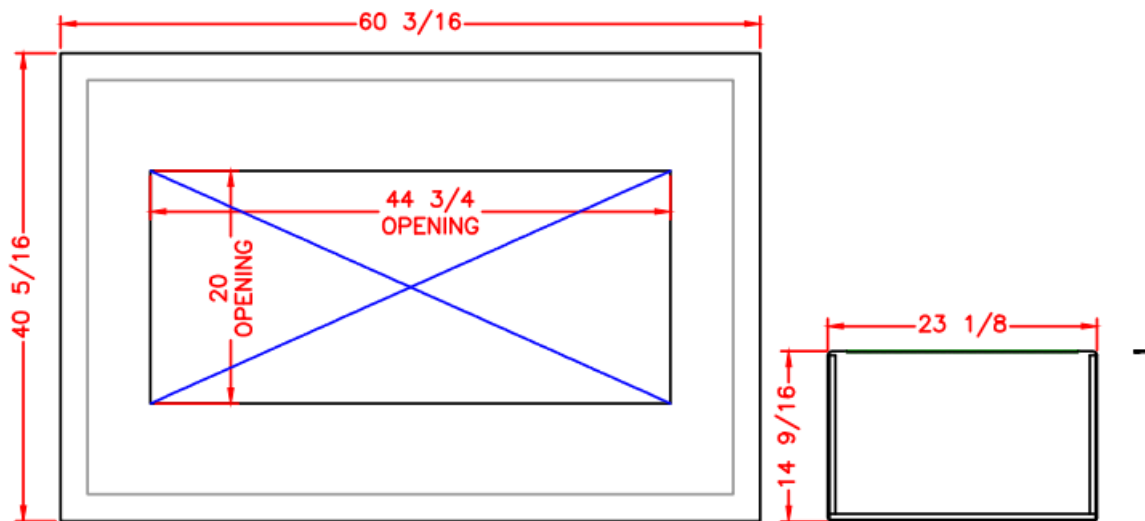
ICS730 – Single 22" Flake or Nugget



ICS1360

Bin top and opening:

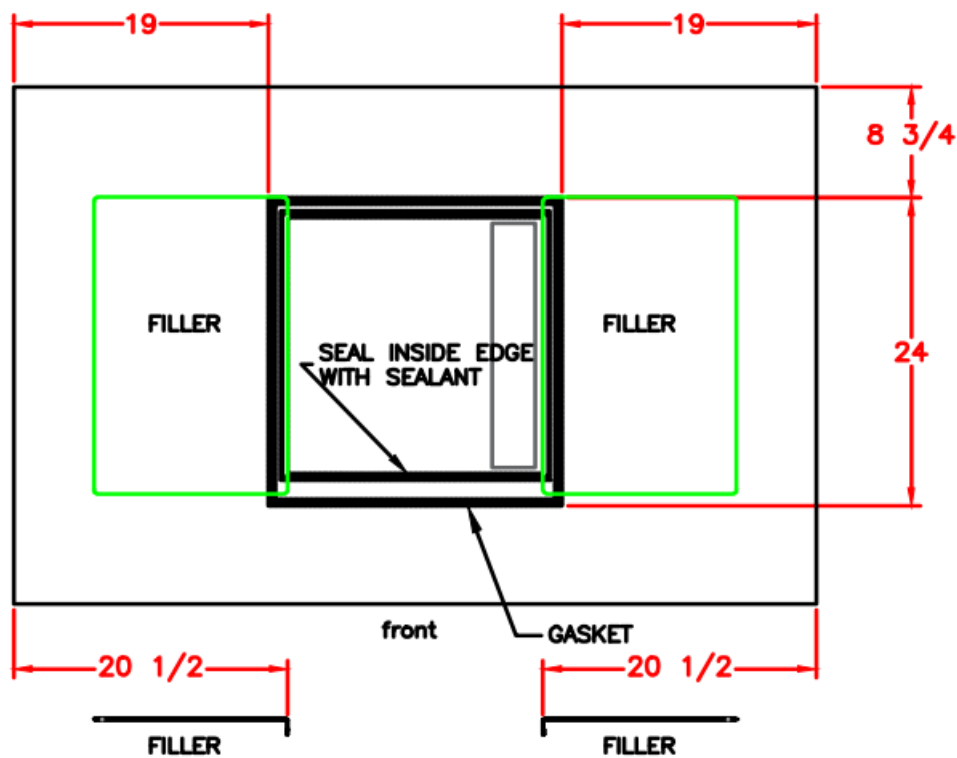
Filler Panels (2):



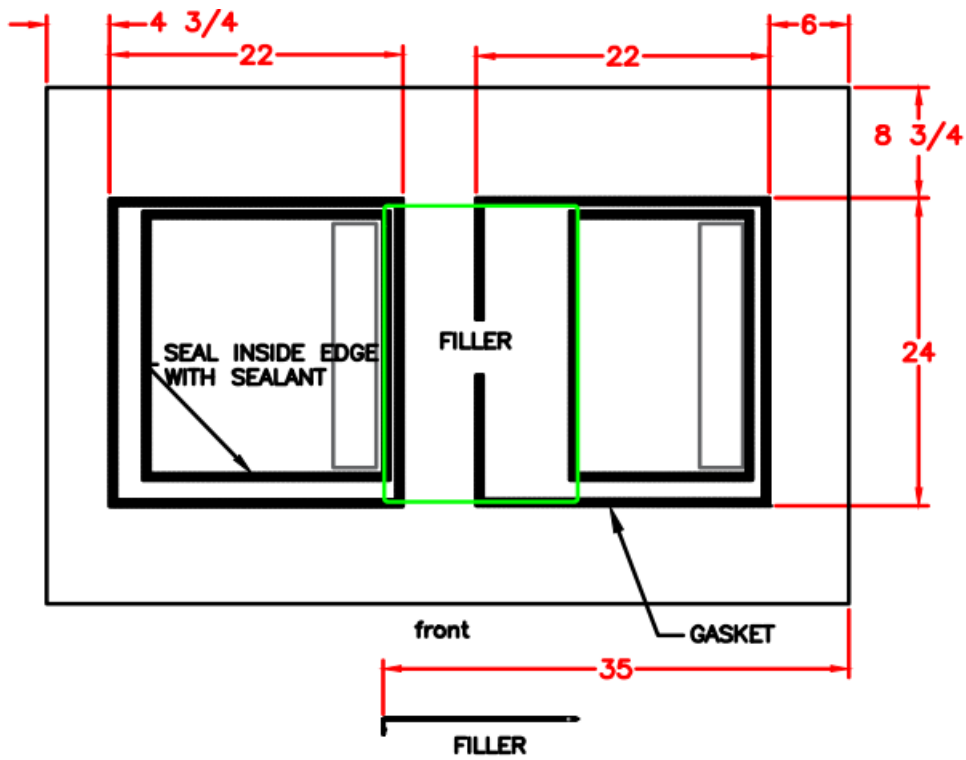
Also included:

- Self adhesive gasket
- Sealant

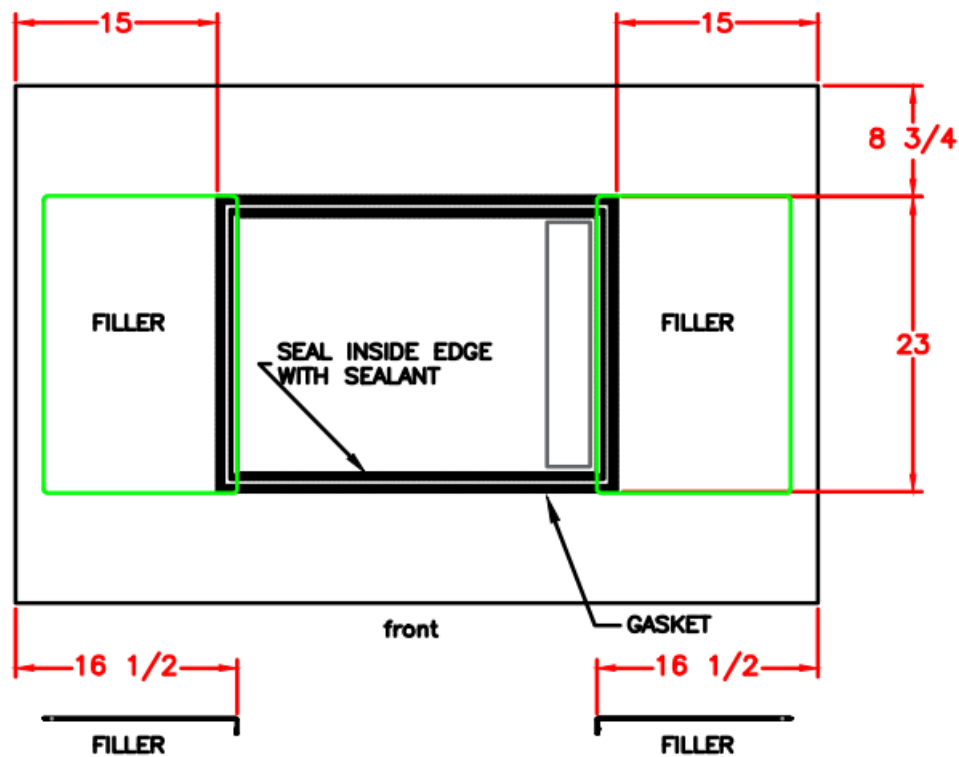
ICS1360 – Single 22" Cuber



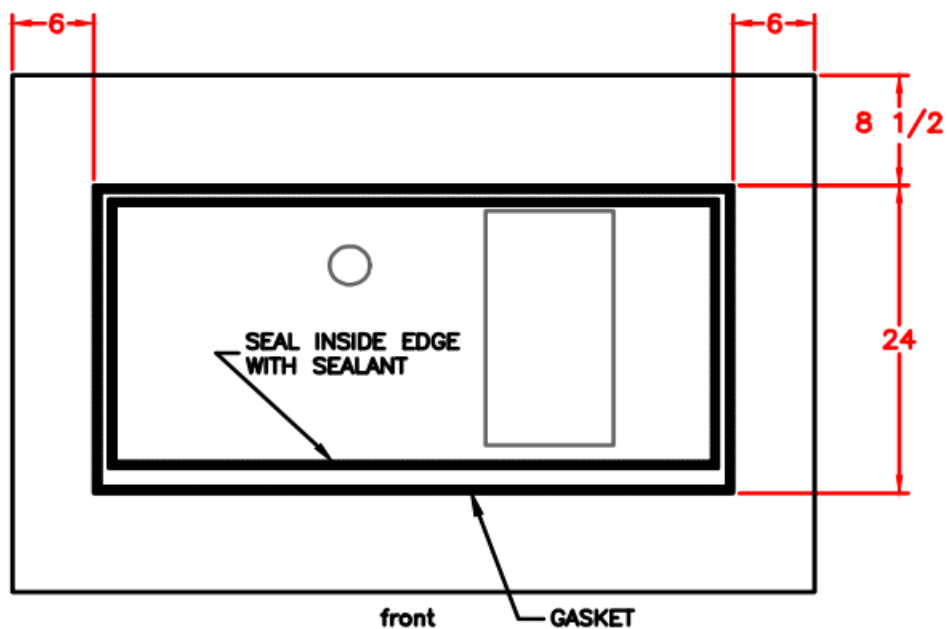
ICS1360 – Two 22" Cubers



ICS1360 – Single 30" Cuber

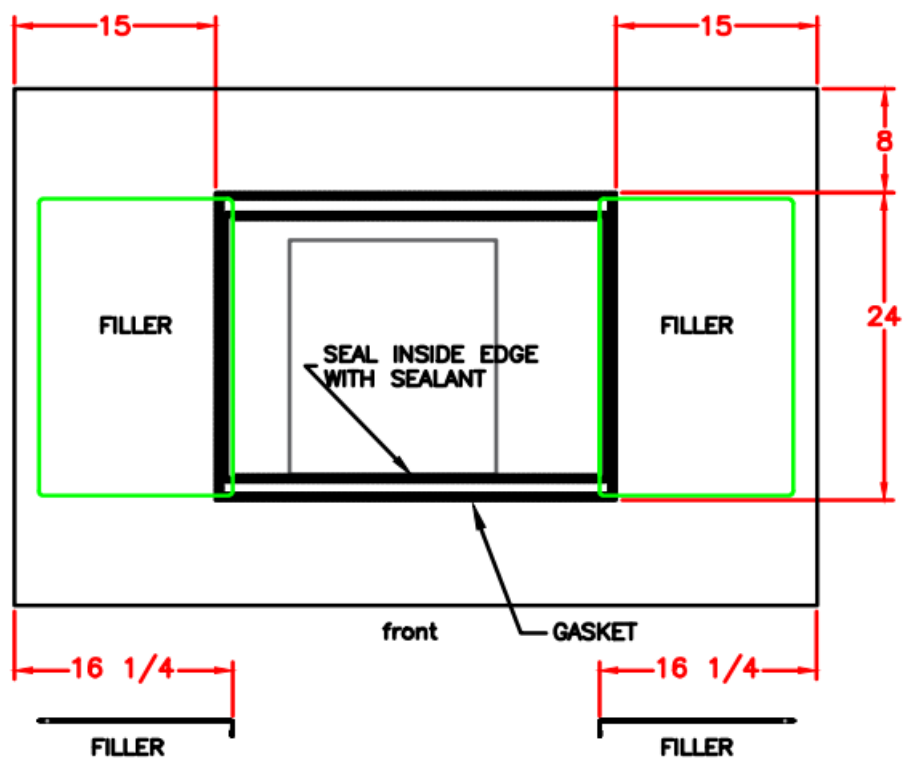


ICS1360 – Single 48" Cuber

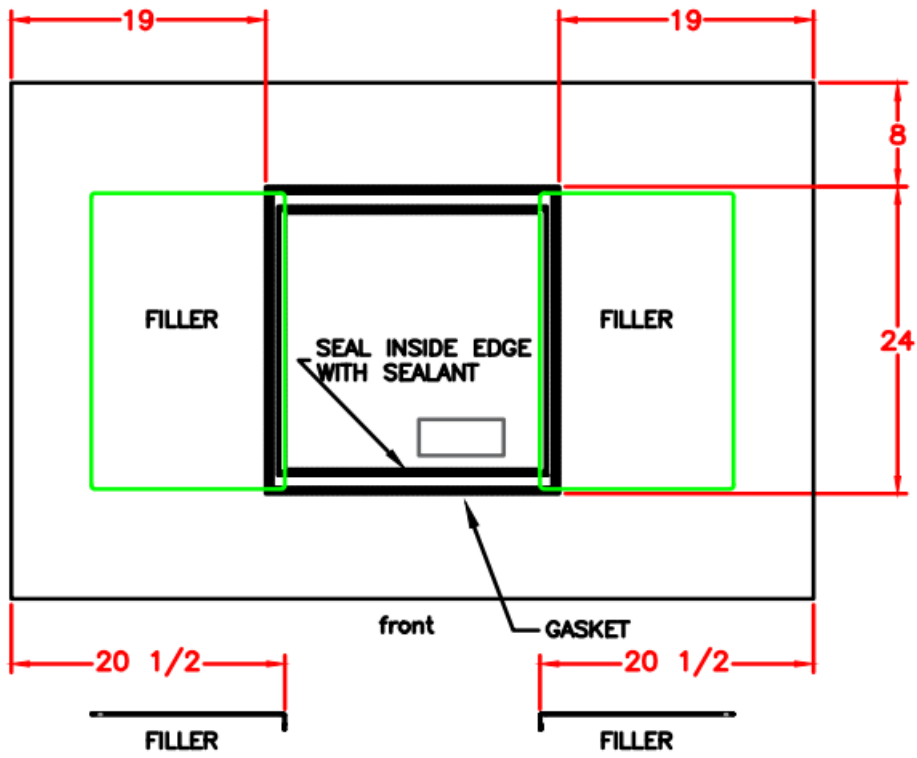


NO FILLER PANEL REQUIRED

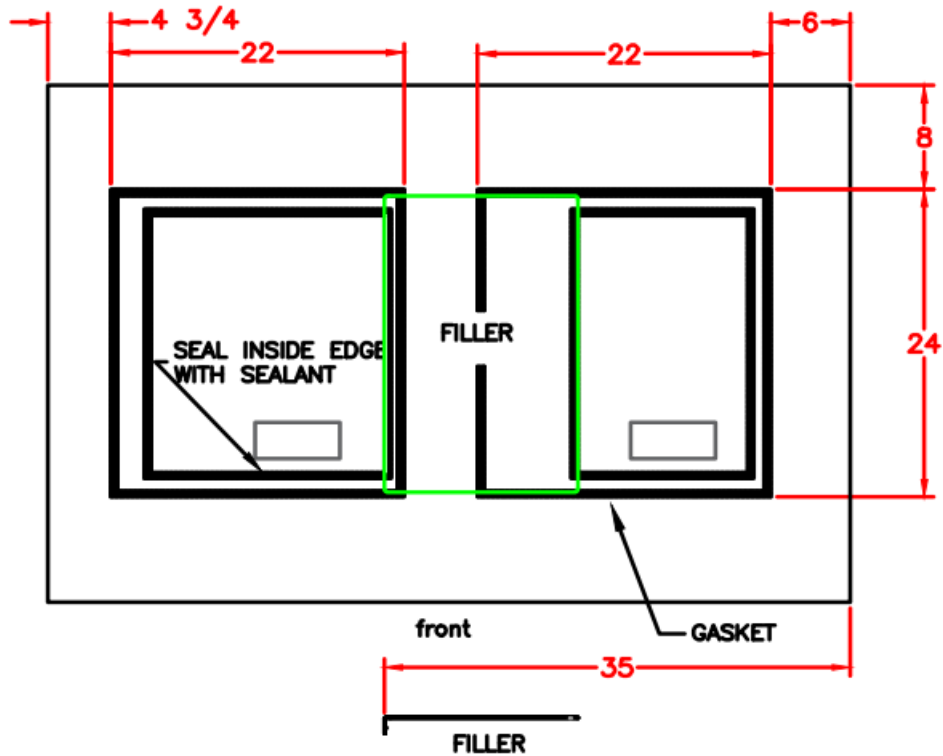
ICS1360 – Single EH330/430 or MC330L/430



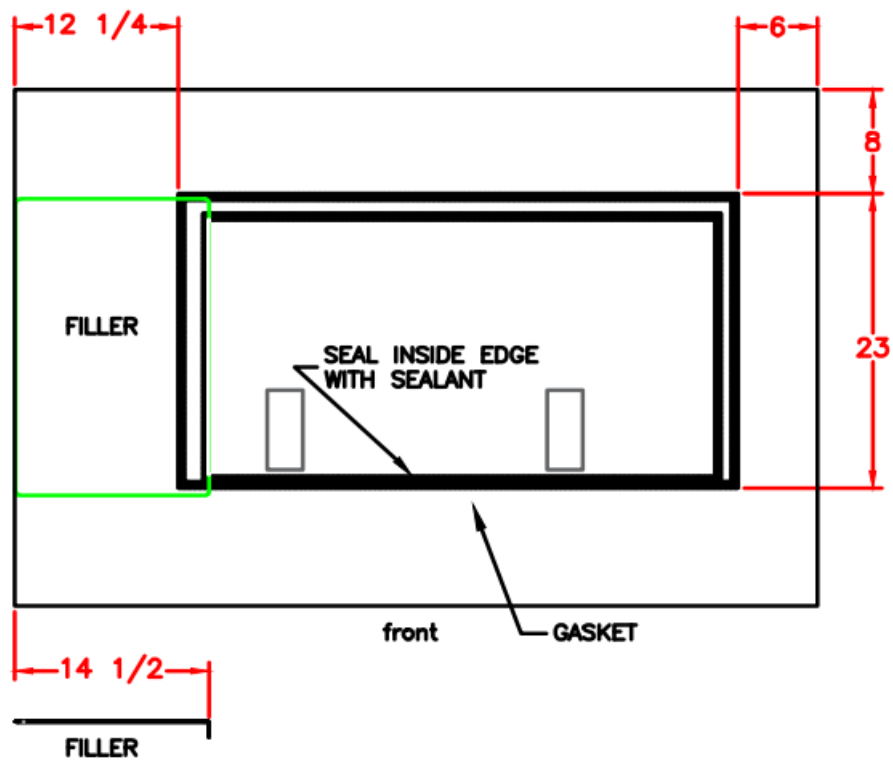
ICS1360 – Single 22" Flake/Nugget



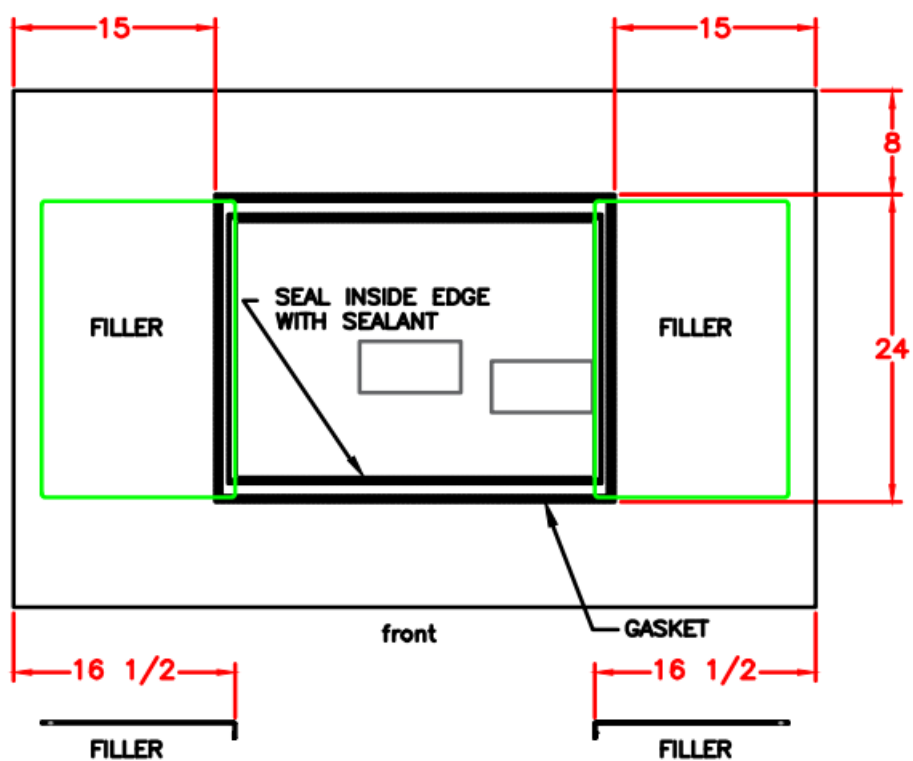
ICS1360 – Two 22" Flake or Nugget



ICS1360 – Single 42" Flake

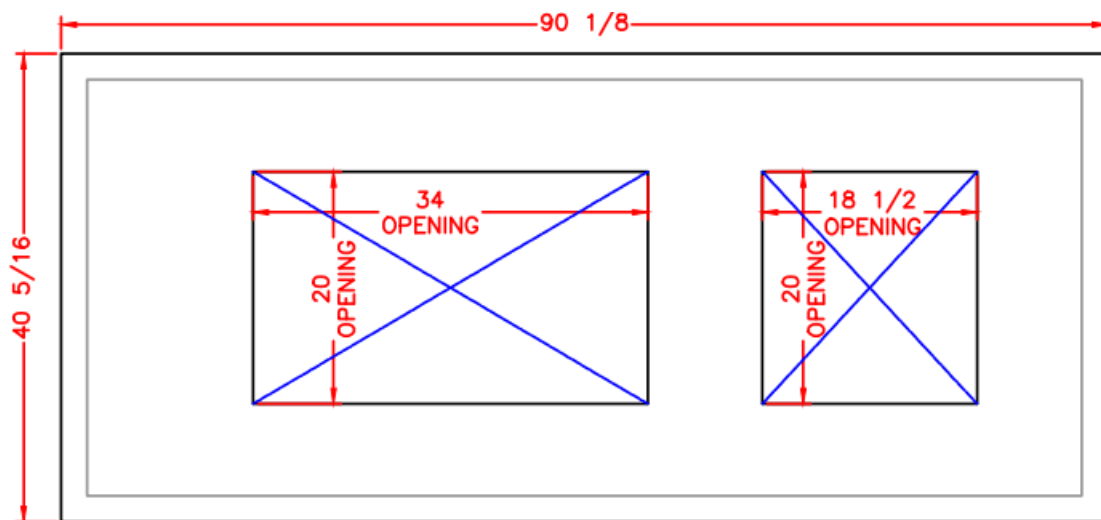


ICS1360 – Single 30" Flake/Nugget



ICS1790

Bin top and opening:

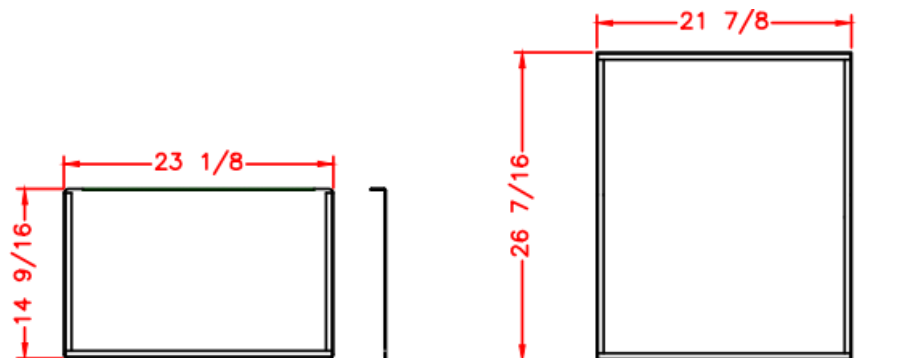


Also included:

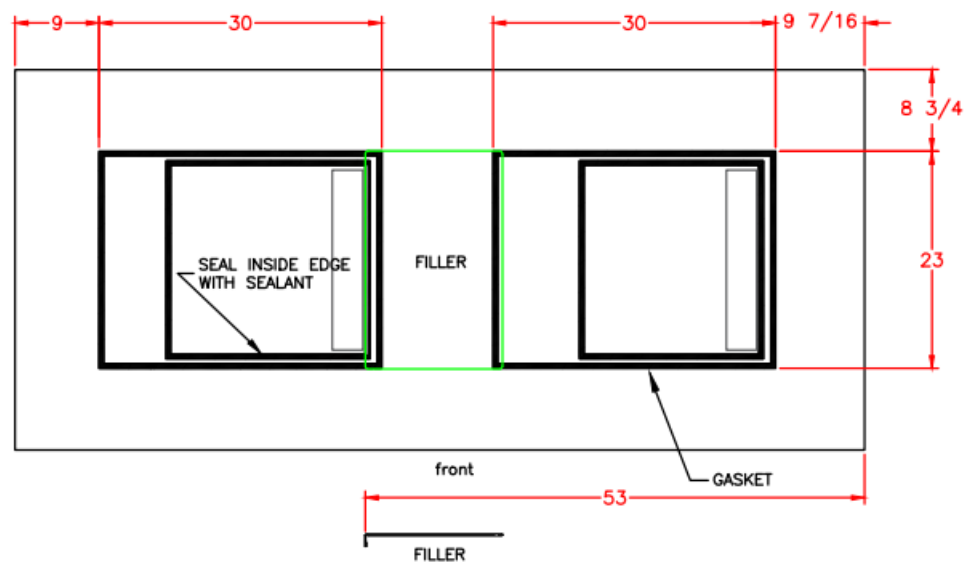
- Self adhesive gasket
- Sealant

Filler Panel:

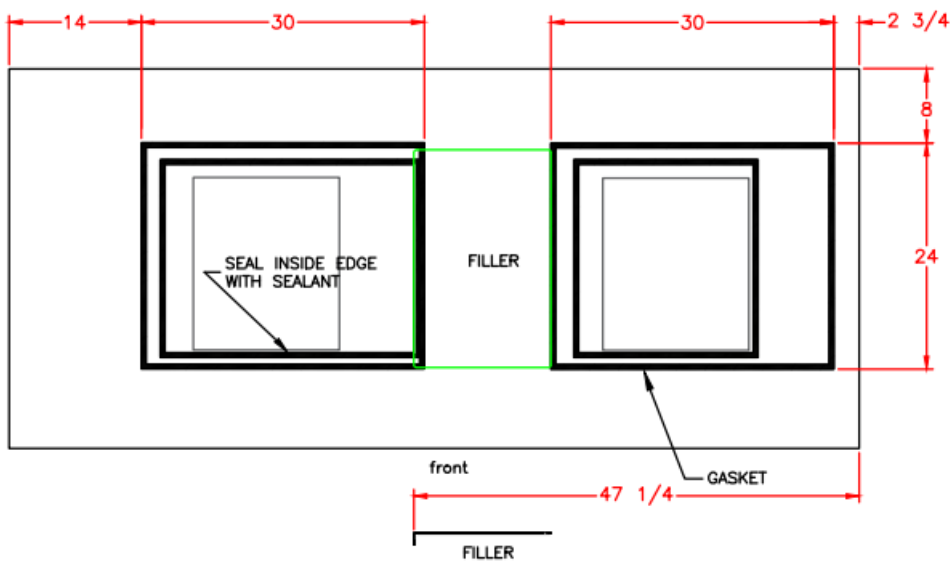
Cover Plate:



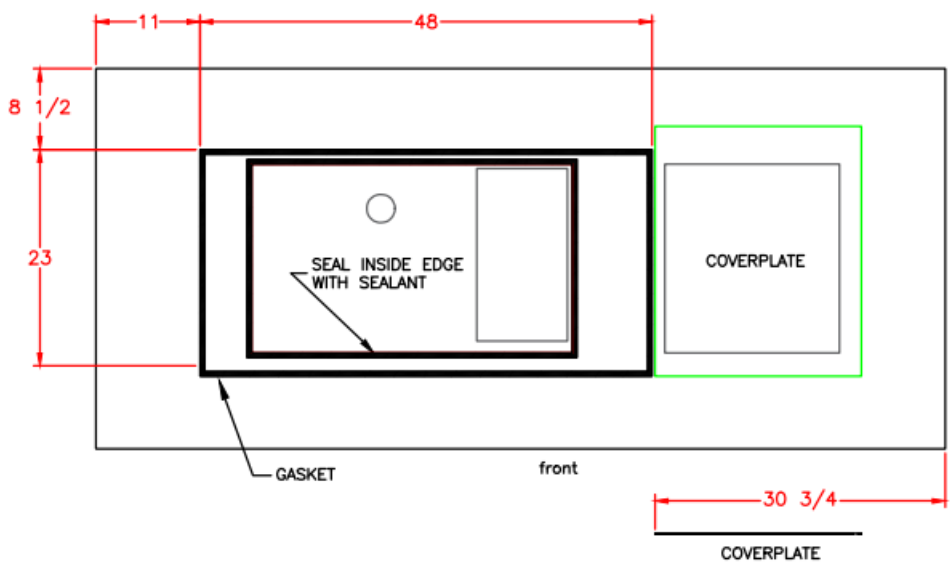
ICS1790 – Two 30" Cubers



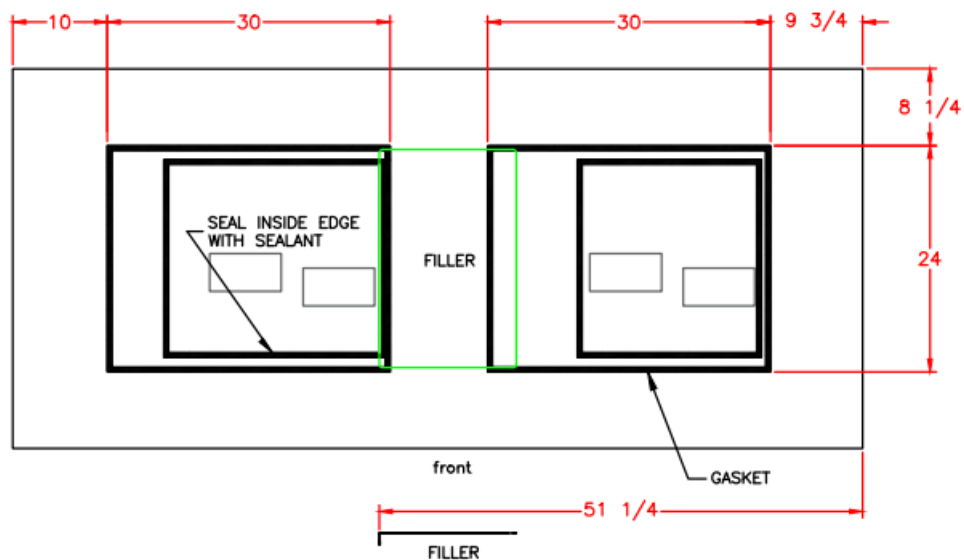
ICS1790 – Two EH330/430 or MC330L/430



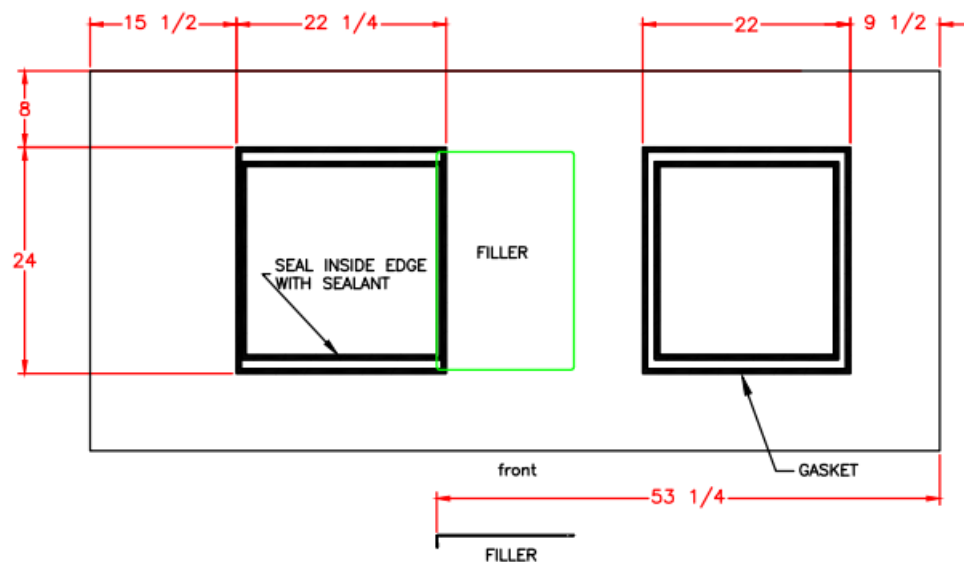
ICS1790 – Single 48" Cuber



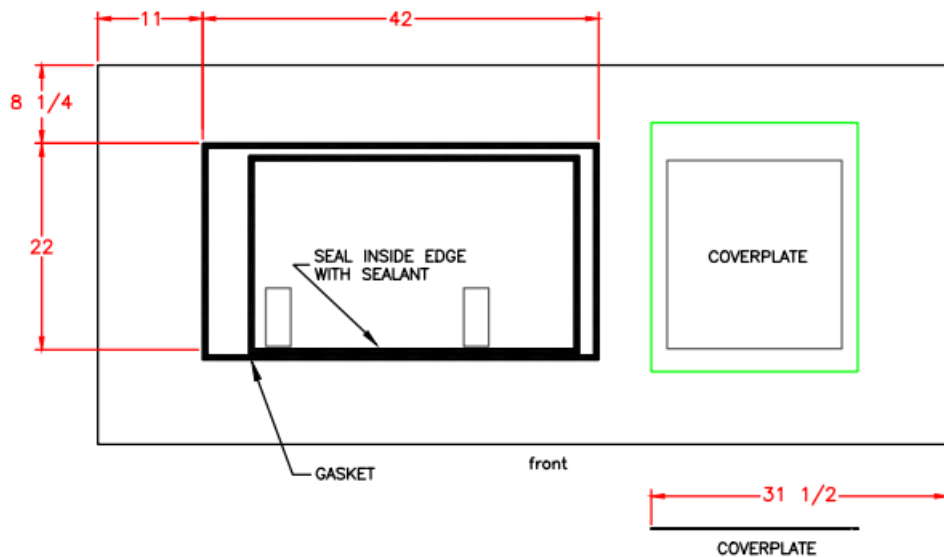
ICS1790 – Two 30" Flake/Nugget



ICS1790 – Two 22" Flake or Nugget



ICS1790 – Single 42" Flake



SCOTSMAN ICE SYSTEMS

101 Corporate Woods Parkway
 Vernon Hills, IL 60061
 800-726-8762
www.scotsman-ice.com

Documents / Resources

<p>Scotsman Ice Systems</p> <p>Instructions for the placement of a Scotsman ice machine on a ICS730, ICS1360, ICS1790 ice cart systems.</p> <p>Overview</p> <p>These instructions are for the placement of a Scotsman ice machine on a ICS730, ICS1360, ICS1790 ice cart systems. The instructions are for the placement of the machine on the cart and the installation of the coverplate.</p> <p>Installation</p> <ol style="list-style-type: none"> 1. Place the machine on the cart. 2. Place the coverplate on the machine. 3. Seal the inside edge of the coverplate with sealant. 4. Place the machine on the cart. 5. Place the coverplate on the machine. 6. Seal the inside edge of the coverplate with sealant. 7. Place the machine on the cart. 	<p>Scotsman ICS730 Ice Machine [pdf] Instructions ICS730 Ice Machine, ICS730, Ice Machine, Machine</p>
--	---

References

- [Scotsman Ice Systems](#)