



Scotsman BL1048S Ice Machine System Instruction Manual

[Home](#) » [Scotsman](#) » Scotsman BL1048S Ice Machine System Instruction Manual 

Contents

- [1 Scotsman BL1048S Ice Machine System](#)
- [2 Product Information](#)
- [3 Overview](#)
- [4 Installation](#)
- [5 BL1048S, BL1360S, and BL1660S Bin Top Installation Instructions](#)
 - [5.1 BL1360S/BL1660S](#)
- [6 Documents / Resources](#)
 - [6.1 References](#)

Scotsman®

Scotsman BL1048S Ice Machine System



Product Information

Scotsman Ice Machine on BL1048S, BL1360S, or BL1660S Upright Ice Storage Bin

The Scotsman ice machine can be placed on a BL1048S, BL1360S, or BL1660S upright ice storage bin. The bin top comes secured to the bin and has a large opening that needs to be covered by the ice machine and/or filler panels. The bin is shipped with the appropriate filler panels, gasket, and sealant to support most Scotsman ice machines. The installation procedure is the same for all applications, but panel and gasket placement may vary depending on the bin and machine configuration.

Installation Instructions

1. Refer to the table on page 2 to identify the appropriate drawing for your specific ice machine and bin configuration.
2. Position the filler panel(s) according to the location noted on the appropriate drawing.
3. Peel the paper backing from the adhesive portion of the filler panel(s) and apply them to the bin top.
4. Apply the inner gasket around the perimeter of the ice drop opening. Make sure not to overlap the gasket.
5. Position and apply the outer gasket according to the location noted on the appropriate drawing.
6. Apply sealant to the inside edge of the inner gasket that will seal the machine and the bin.
7. Carefully position the ice maker onto the bin.

BL1048S, BL1360S, and BL1660S Bin Top Installation Instructions Contents:

BL1048S

- Bin top and opening:
- Filler Panels (2):
 - BL1048S – Single 22 Cuber
 - BL1048S – Single 30 Cuber
 - BL1048S – Two 22 Cubers
 - BL1048S – Single EH330/430 or MC330L/430

BL1360S/BL1660S

- Bin top and opening:
- Filler Panels (2):
 - BL1360S/BL1660S – Single 22 Cuber
 - BL1360S/BL1660S – Single 30 Cuber
 - BL1360S/BL1660S – Two 22 Cubers
 - BL1360S/BL1660S – Single EH330/430 or MC330L/430

Contact Information:

SCOTSMAN ICE SYSTEMS
101 Corporate Woods Parkway
Vernon Hills, IL 60061
800-726-8762
www.scotsman-ice.com

Instructions for the placement of a Scotsman ice machine on a BL1048S, BL1360S, or BL1660S upright ice storage bin.

Overview

The bin top is secured to the bin at the factory and has a large opening that must be covered by ice machine(s) and/or filler panel(s). Each bin ships with the appropriate filler panels, gasket, and sealant to support most Scotsman ice machines. The general procedure for installing the top is the same for all applications, however panel and gasket placement varies by bin/machine configuration.

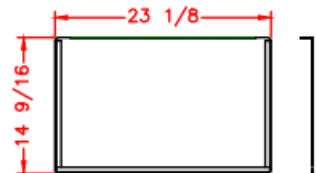
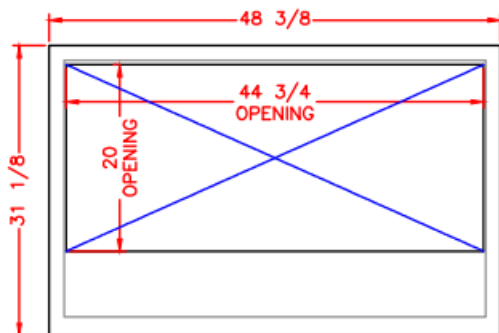
Installation

1. Identify appropriate drawing for the specific ice machine and bin configuration using the table on page 2.
2. Position filler panel(s) according to location noted on appropriate drawing.
3. Peel paper backing from adhesive portion of filler panel(s) and apply to bin top.
4. Apply inner gasket around perimeter of ice drop opening. Do not overlap gasket.
5. Position and apply outer gasket according to location noted on appropriate drawing.
6. Apply sealant to inside edge of inner gasket that will seal machine and to bin.
7. Carefully position ice maker onto bin.

BL1048S, BL1360S, and BL1660S Bin Top Installation Instructions

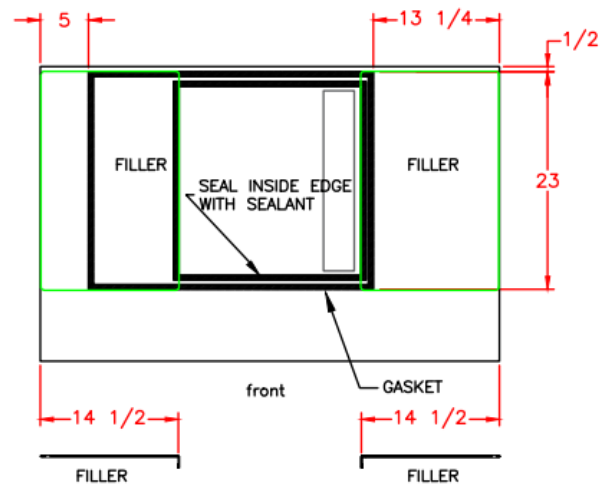
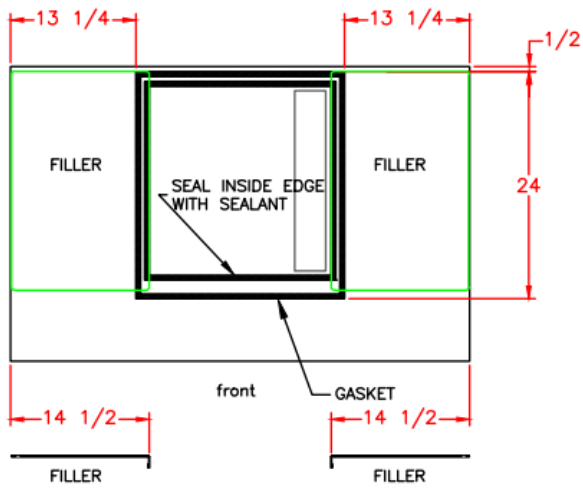
BL1048S

- Bin top and opening:
- Filler Panels (2):

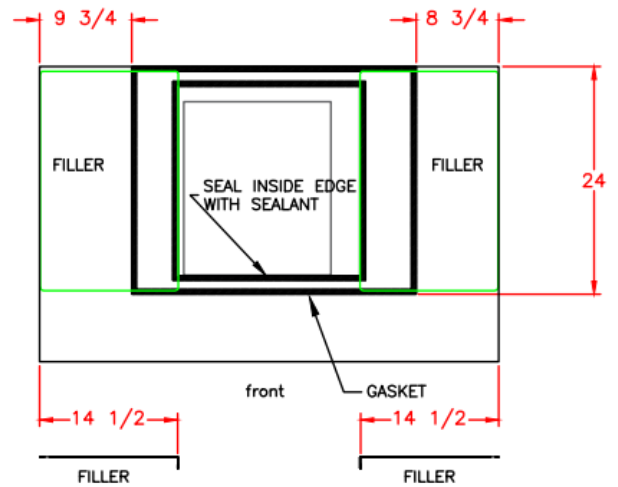
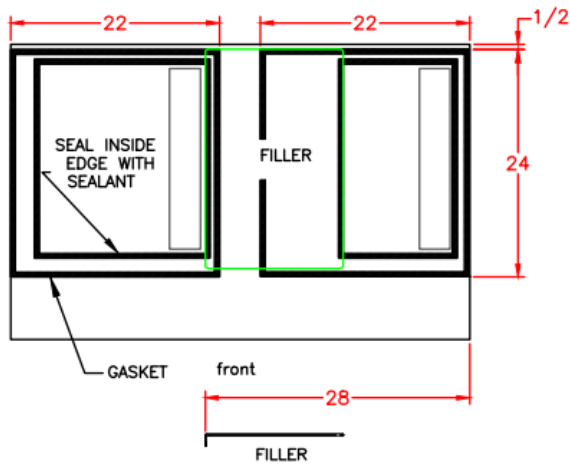


Also included:

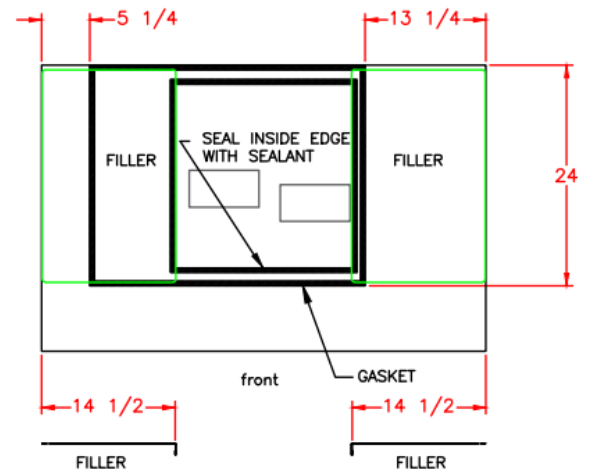
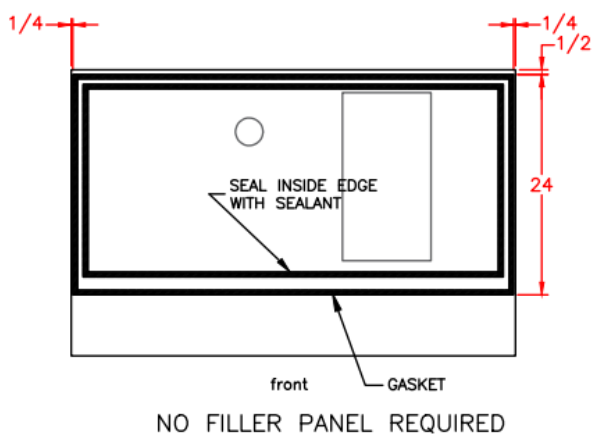
- Self adhesive gasket
- Sealant
- BL1048S – Single 22" Cuber
- BL1048S – Single 30" Cuber



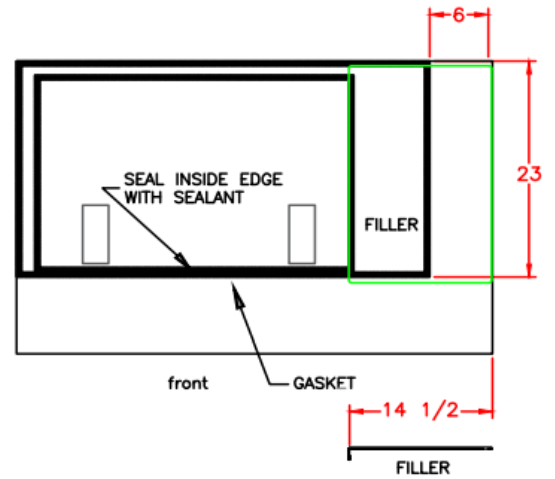
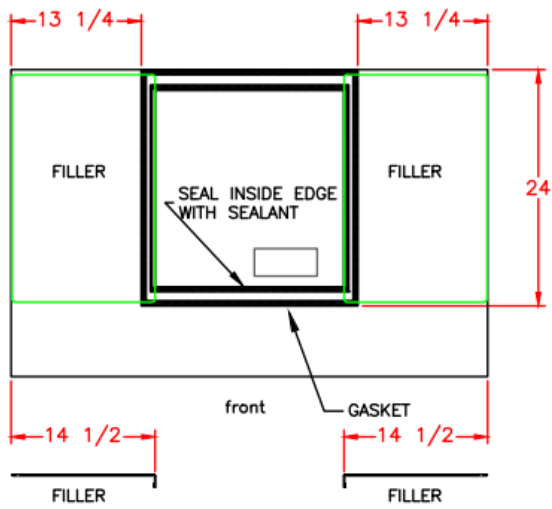
- BL1048S – Two 22" Cubers
- BL1048S – Single EH330/430 or MC330L/430



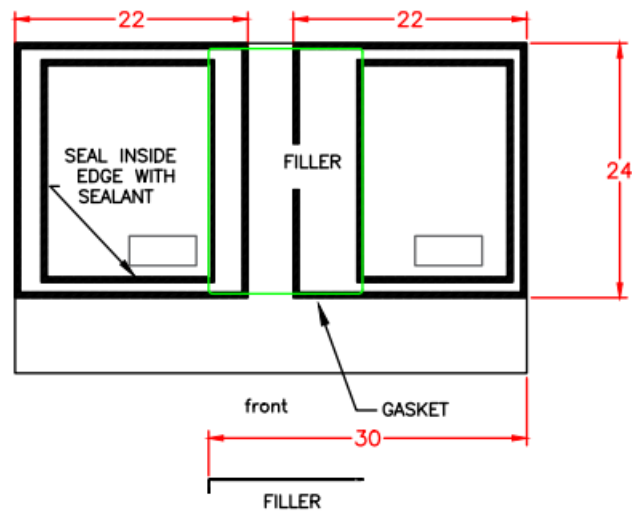
- BL1048S – Single 48" Cuber
- BL1048S Single 30" Flake or Nugget



- BL1048S – Single 22" Flake or Nugget
- BL1048S-Single 42" Flake



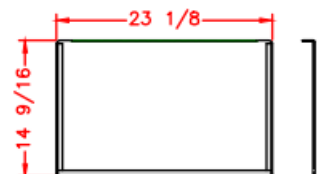
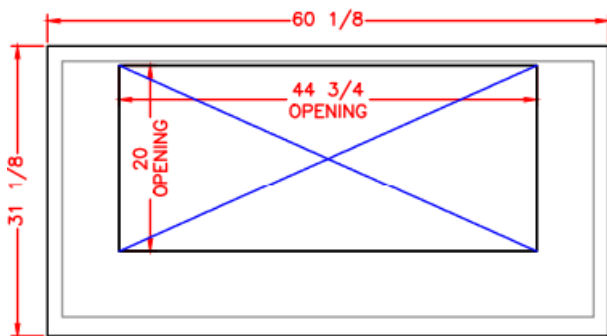
- BL1048S – Two 22" Flake or Nugget



BL1048S, BL1360S, and BL1660S Bin Top Installation Instructions

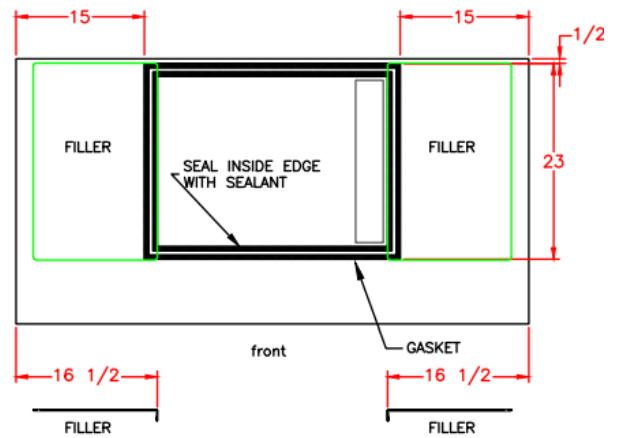
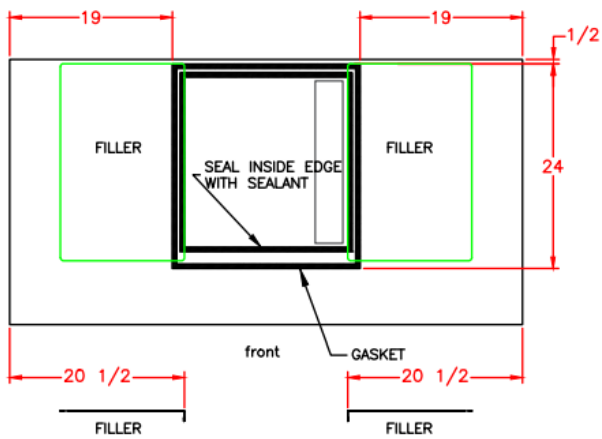
BL1360S/BL1660S

- Bin top and opening:
- Filler Panels (2):

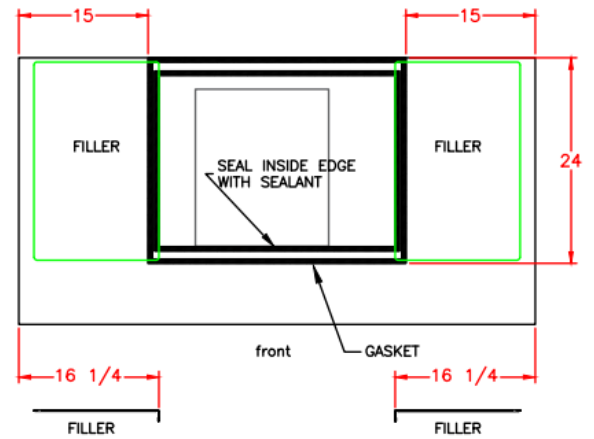
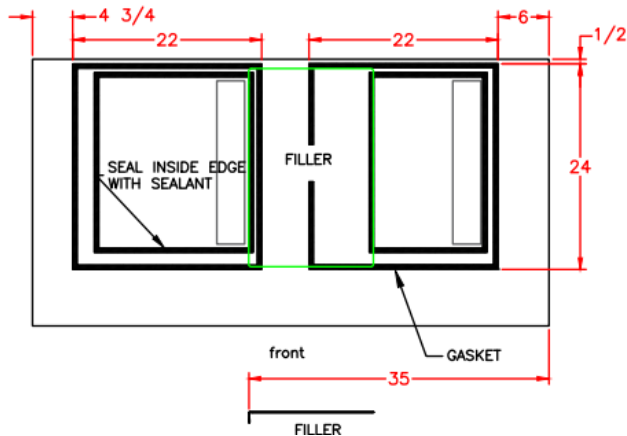


Also included:

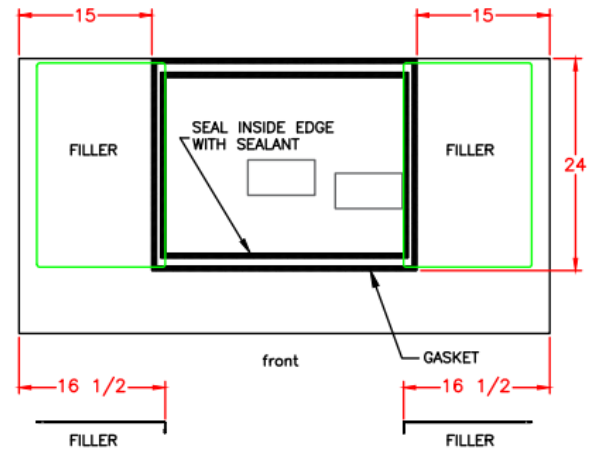
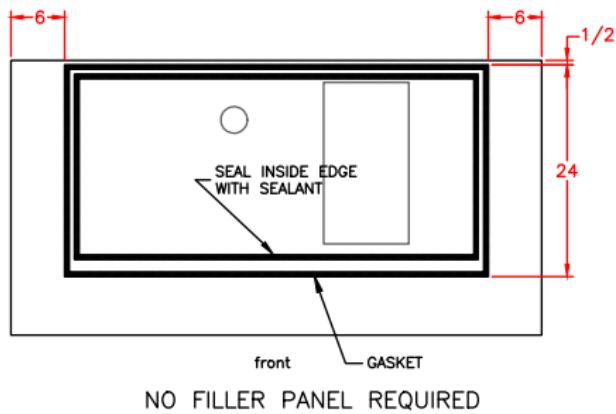
- Self adhesive gasket
- Sealant
- BL1360S/BL1660S – Single 22" Cuber
- BL1360S/BL1660S – Single 30" Cuber



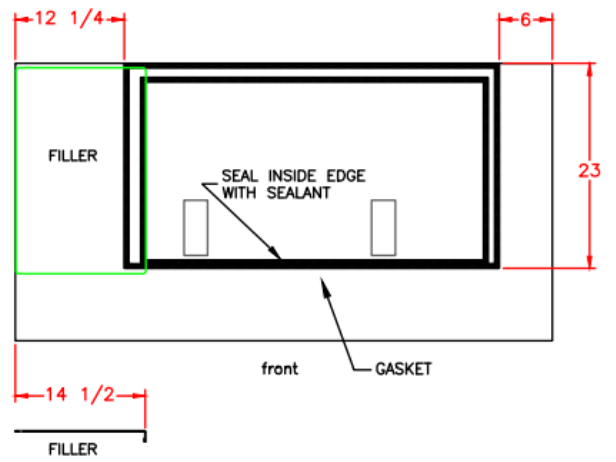
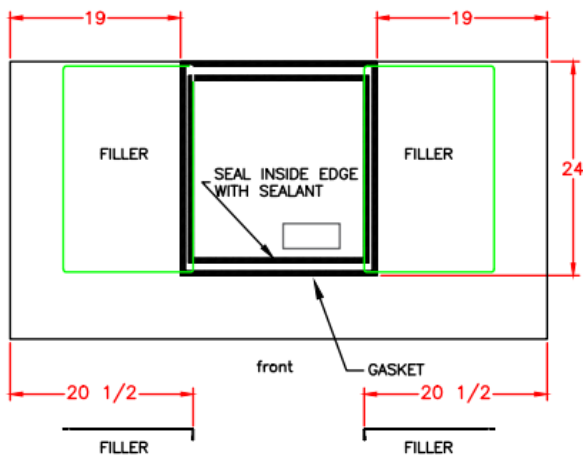
- BL1360S/BL1660S – Two 22" Cubers
- BL1360S/BL1660S – Single EH330/430 or MC330L/430



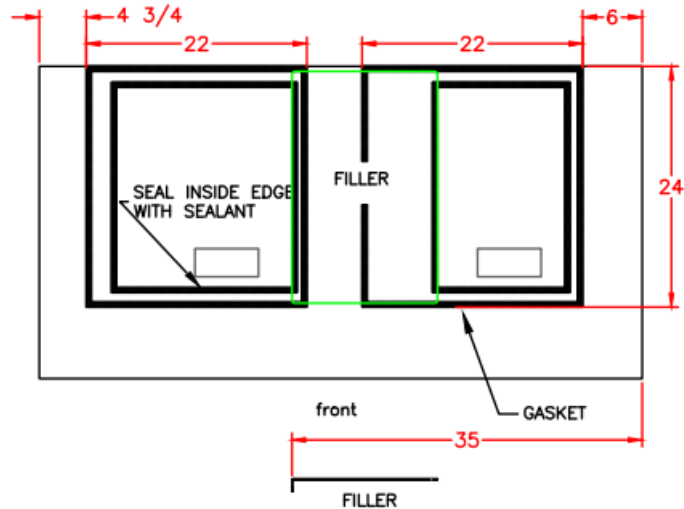
- BL1360S/BL1660S – Single 48" Cuber
- BL1360S/BL1660S – Single 30" Flake/Nugget



- BL1360S/BL1660S – Single 22" Flake/Nugget
- BL1360S/BL1660S – Single 42" Flake



- BL1360S/BL1660S – Two 22" Flake or Nugget



SCOTSMAN ICE SYSTEMS
101 Corporate Woods Parkway Vernon Hills, IL 60061
800-726-8762
www.scotsman-ice.com

Documents / Resources

<p>Scotsman Ice Systems Instructions for the placement of a Scotsman ice machine on a BL1048S, BL1360S, or BL1660S upright ice storage bin.</p> <p>Overview: These instructions are intended to provide the user with the necessary information to properly install the ice machine on the storage bin. The user should read these instructions carefully before attempting to install the machine.</p> <p>Installation: 1. Verify that the storage bin is properly leveled and supported. 2. Remove the gasket from the storage bin. 3. Place the ice machine on the storage bin. 4. Reinstall the gasket on the storage bin. 5. Verify that the ice machine is properly sealed to the storage bin.</p>	<p>Scotsman BL1048S Ice Machine System [pdf] Instruction Manual BL1048S Ice Machine System, BL1048S, Ice Machine System, Machine System, System</p>
---	---

References

- [Scotsman Ice Systems](#)