

SCOSCHE MQ5WDV-1 Magsafe Wireless Charge5 Window Dash Instruction Manual

SCOSCHE MQ5WDV-1 Magsafe Wireless Charge5 Window Dash Instruction Manual



Contents

- [1 INCLUDED ELEMENTS](#)
- [2 DEVICE SETUP](#)
- [3 SECTION A](#)
- [4 SECTION B](#)
- [5 SECTION C](#)
- [6 SECTION D](#)
- [7 SECTION E](#)
- [8 SECTION F](#)
- [9 SECTION G](#)
- [10 SECTION H](#)
- [11 Documents / Resources](#)

INCLUDED ELEMENTS



- A. MagicMount™ Charge5 Magnetic Wireless Charging Mount
- B. Mounting Adapter
- C. Window/Dash Mount
- D. Vent Mount
- E. MagicPlate™
- F. Protective Film
- G. Mounting Template for MagicPlate
- H. Car Adapter
- I. Cable Routing Clips (2)
- J. Cleaning Wipe

DEVICE SETUP

SECTION A-iPhone 12 or Later (with optional MagSafe™ Case)

SECTION B-Wireless Charging Smartphones (with Case) iPhone 11/Pixel 4 & Newer (Case Required) Wireless Charging Smartphones (without Case)

SECTION C-Attaching Device with MagicPlate

SECTION D-Assembling Window/Dash Mount

SECTION E-Installing Window/Dash Mount

SECTION F-Switching Mounting Bases

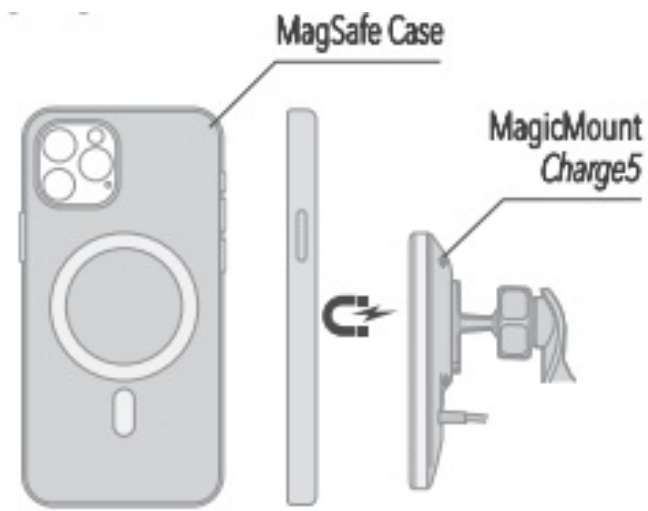
SECTION G – Installing Vent Mount

SECTION H – Connection & Charging

SECTION A

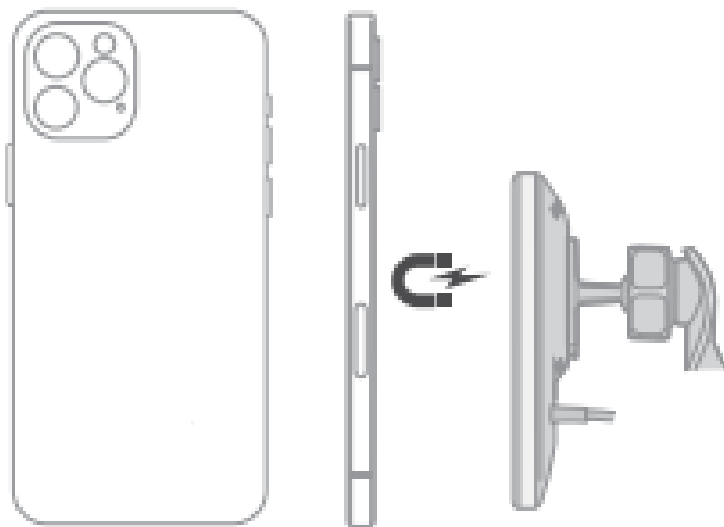
iPhone 12 or Later (with optional MagSafe Case) If using a case, it must be a MagSafe case (not included) for MagicMount Charge5 to function properly.

Note: MagicPlate not required.



iPhone 12 or Later (without Case)

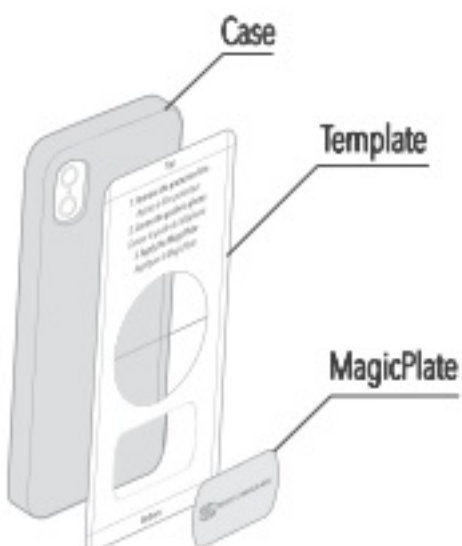
Note: MagicPlate not required.



SECTION B

Wireless Charging Smartphones (with Case)

iPhone 11/ Pixel 4 and Newer (Case required*)

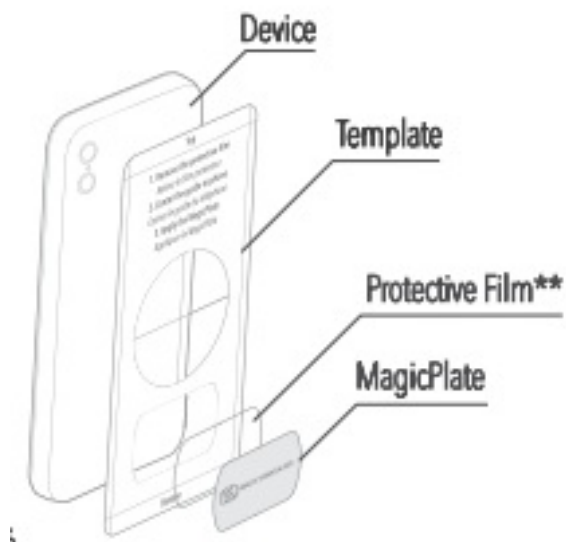


Use the included template to place MagicPlate in the correct position.
 Manufacturing materials do not allow adhesives to bond directly to the device.

Wireless Charging Smartphones (without Case)

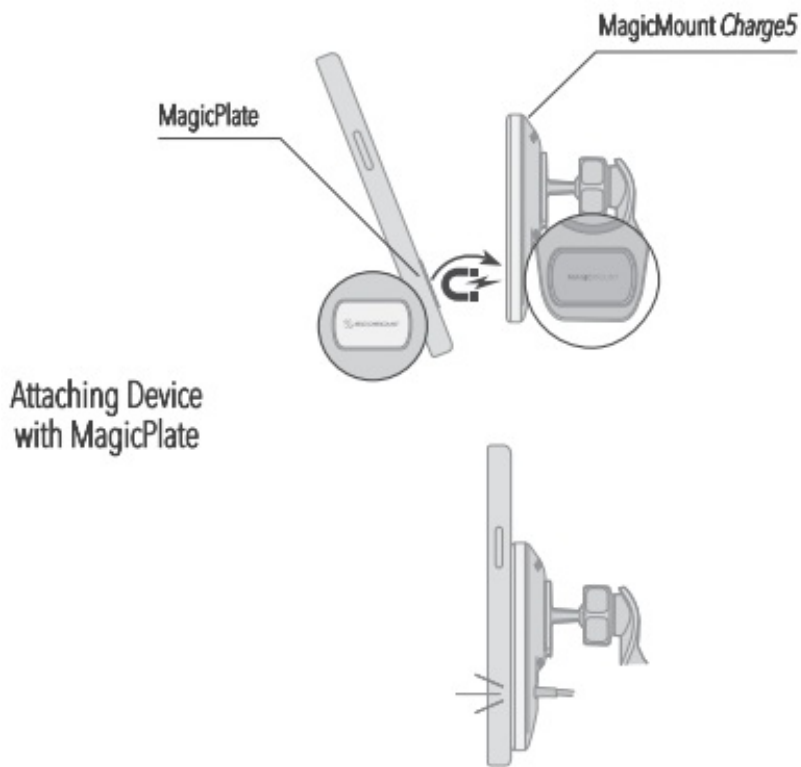
Use the included template to place MagicPlate and Protective Film ** in the correct position.

It is recommended to use the Protective Film. If the MagicPlate needs to be removed, the film simplifies the process. To remove the MagicPlate use a credit card and slide in between the film and MagicPlate. Do NOT use anything sharp/ hard as this can damage the device.



Unsign Tolerance				
Linear Dimension	Angle 0.3°	Part Name:	Drawing Number	ASWC1500033C1501
Units mm	Scale: /	Adapt Product:	Design	
Quantity 1	Revision: A/ 0	Part Material:	80g	
Page 1 of 3		Technical Disposal:	Check	
		Tooling NO:	Approve	
				Drawing A4

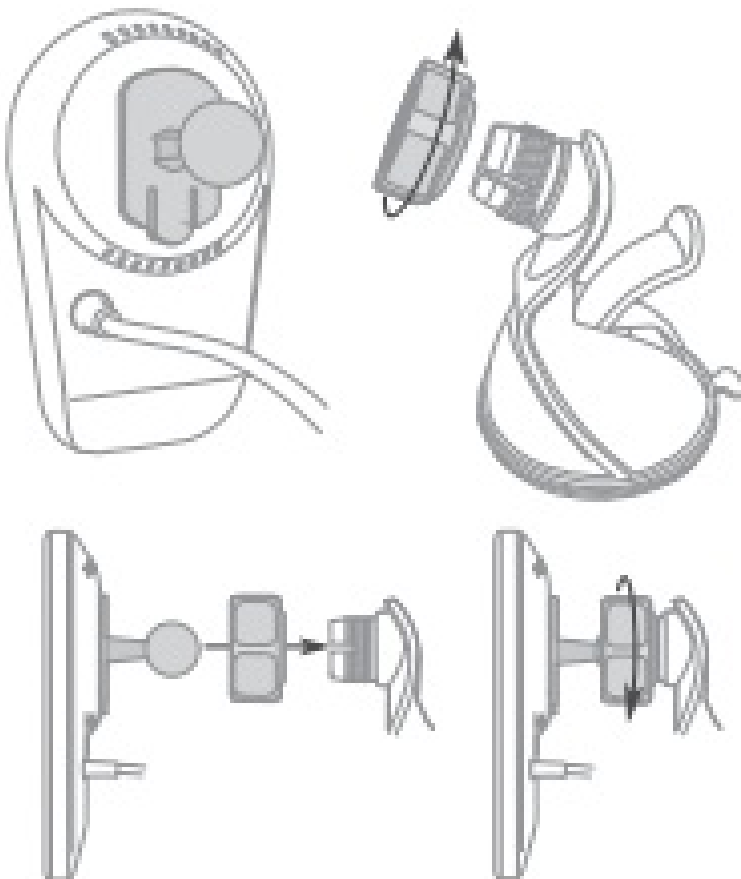
SECTION C



SECTION D

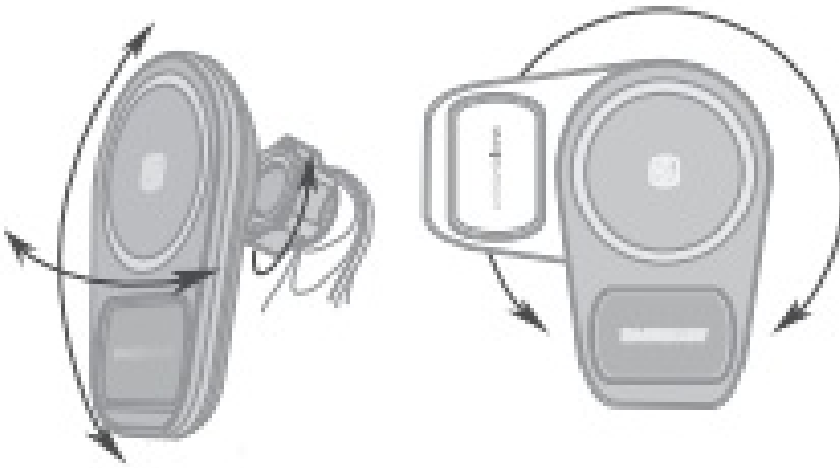
Window/Dash Mount Assembly

Remove ball-joint collar from mounting base and attach ball end adapter on charging mount as shown.



Charging Mount

Adjustment (Window/Dash Mount only) Loosen ball-joint collar to adjust angle or rotate mount 360°.



SECTION E

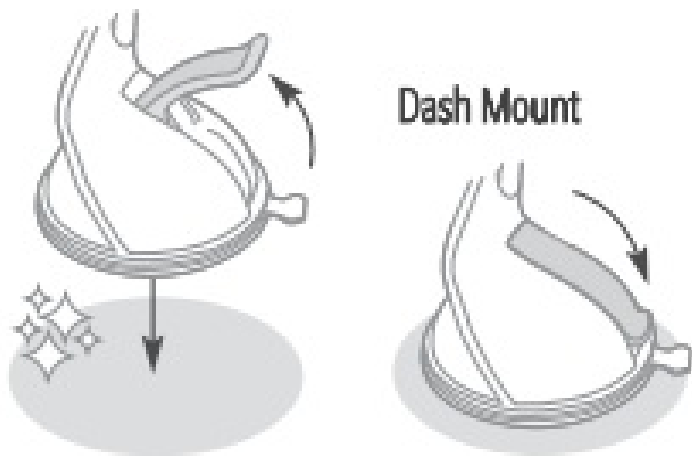
Window/Dash Mount Installation

1. Clean the mounting surface using supplied wipe.



Window Mount

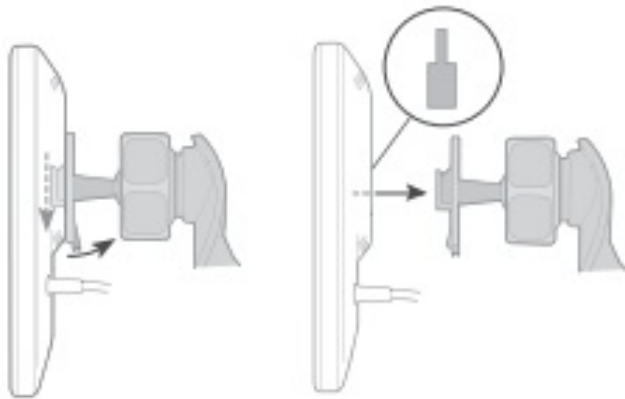
2. Remove protective film from the StickGrip suction cup base**
3. With the lever in the UP position, place the mount on surface** and press lever down to lock in place. Supplied cleaning wipe may cause discoloration of certain plastics, vinyls and painted surfaces. It is recommended to test in an inconspicuous area first.
Note: StickGrip suction cup may leave residue or discoloration on some surfaces. It may also leave a ring of residue when mounted to the dash.
4. To renew and reuse StickGrip mounting base, rinse under warm water and allow to air dry.



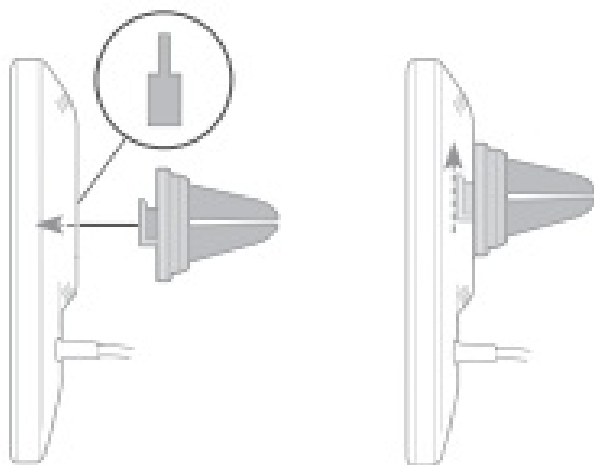
SECTION F

Switching Mounting Bases (Window/Dash Mount to Vent Mount)

1. Pull release tab out on mounting adapter, and slide t-notch hitch down.



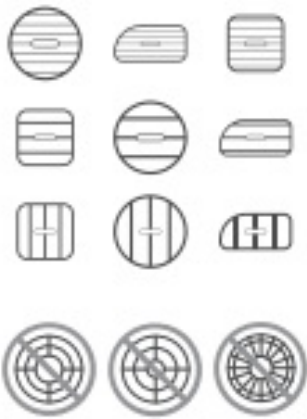
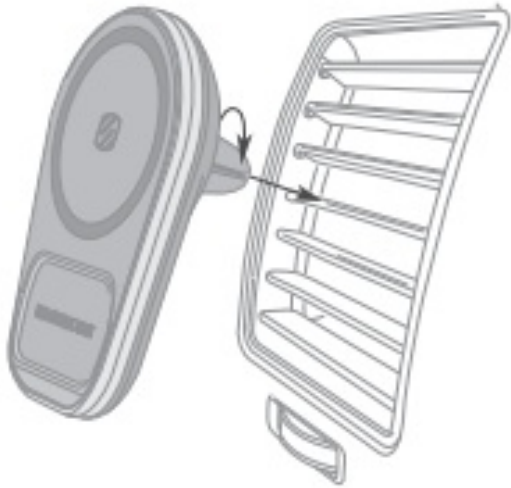
2. Remove t-notch hitch from opening on back of mount head.
3. Insert t-notch hitch on vent mount into opening on back of mount head.
4. Slide t-notch hitch upward



SECTION G

Vent Mount Installation Rotate vent clips on mount to align with vent.

Note: Works with many vent designs. Not compatible with curved or circular vents



SECTION H

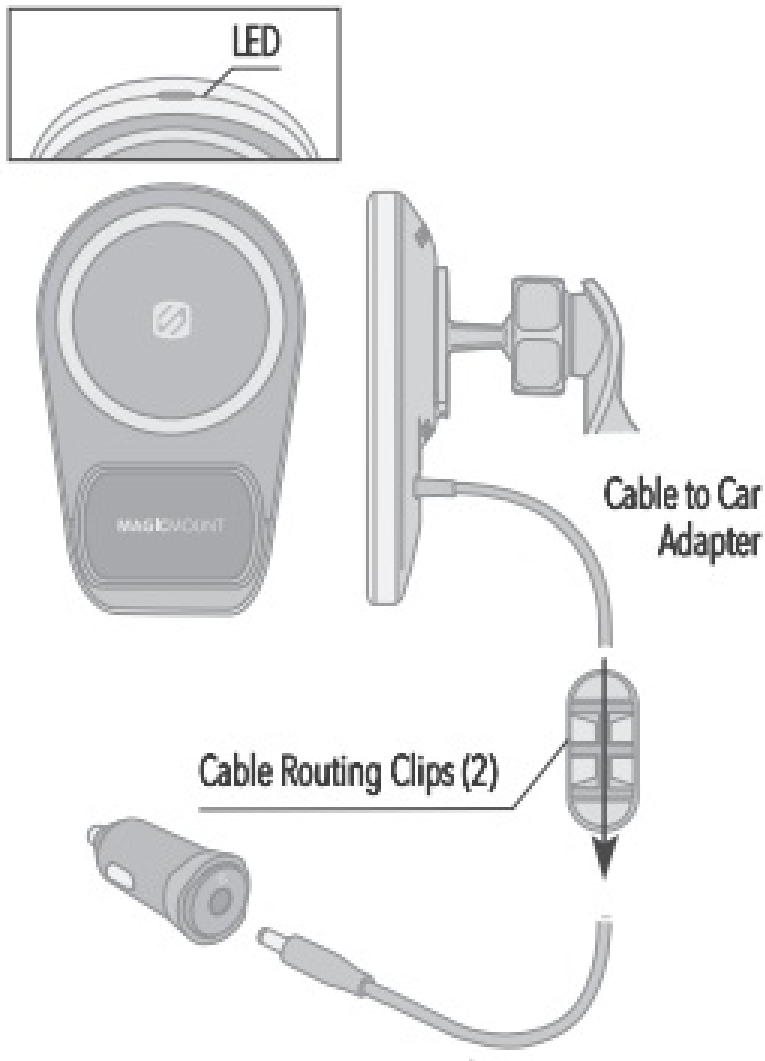
LED Status Indicator

Blue: Charging Flashing

Red: Foreign Object

Detected (FOD)

Wireless Charger



Input: 12.0V===2.04

Output: 15.0W/10.0W/7.5W/5.0W

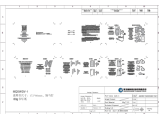
Actual charge rates may vary depending on device software and environmental conditions.

Car Adapter

Input: 12.0V-24.0V 2.5A

DC Output: 11.7V-2.04

Documents / Resources

	<p>SCOSCHE MQ5WDV-1 Magsafe Wireless Charge5 Window Dash [pdf] Instruction Manual IKQMQ5, MQ5WDV-1, MQ5WDV-1 Magsafe Wireless Charge5 Window Dash, Magsafe Wirele ss Charge5 Window Dash, Wireless Charge5 Window Dash, Charge5 Window Dash, Window Dash, Dash</p>
---	---