



**Industries
BL2AW
BaseLynx 2.0
Modular
Charging
System**



Scosche Industries BL2AW BaseLynx 2.0 Modular Charging System Owner's Manual

[Home](#) » [Scosche Industries](#) » Scosche Industries BL2AW BaseLynx 2.0 Modular Charging System Owner's Manual 

Contents

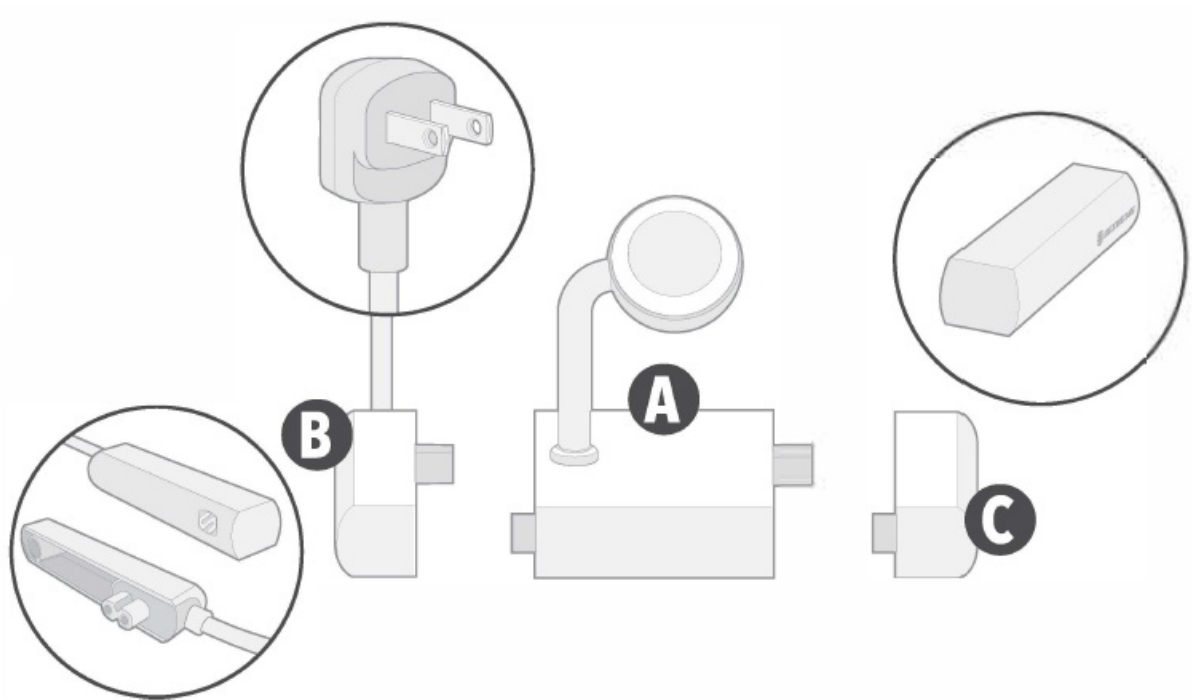
- [1 Scosche Industries BL2AW BaseLynx 2.0 Modular Charging System](#)
- [2 INCLUDED ELEMENTS](#)
- [3 DEVICE SETUP](#)
- [4 BASELYNX POINT SYSTEM](#)
- [5 SAFETY WARNINGS](#)
- [6 SPECIFICATIONS](#)
- [7 Documents / Resources](#)
 - [7.1 References](#)
- [8 Related Posts](#)



Scosche Industries BL2AW BaseLynx 2.0 Modular Charging System

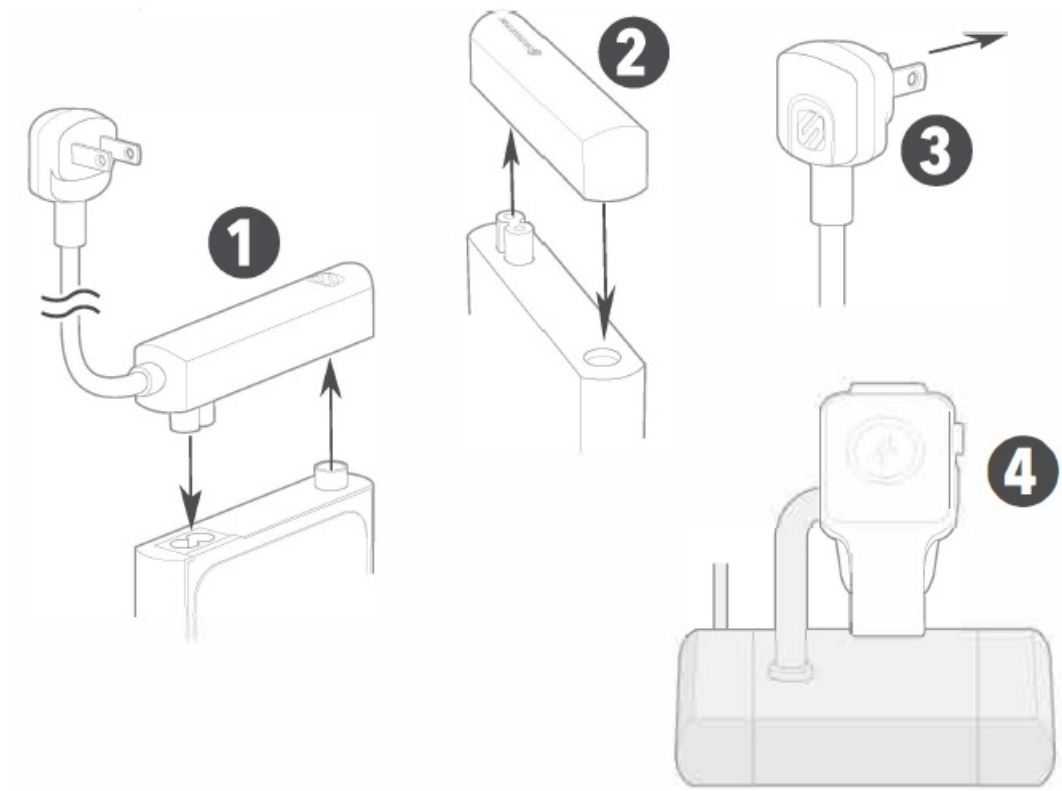


INCLUDED ELEMENTS







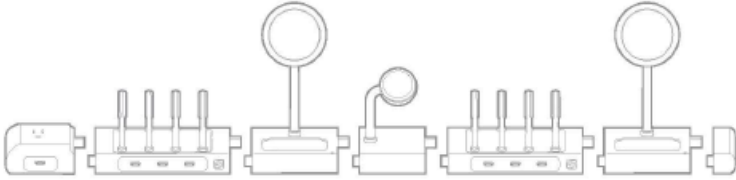
- **A. Magnetic Charger for Apple Watch**
 - Displays and charges all Apple Watch models
 - Stand is compatible with all watch band types
- **B. Protective End Cap with Integrated AC Power Cord**
- **C. Protective End Cap**

DEVICE SETUP



1. Place the power cord end cap on the charger module.
2. Place the other end cap on the charger module.
3. Plug the power cord into a wall socket
4. Place Apple Watch on the magnetic charger.

BASELYNX POINT SYSTEM

Part No.	BL2MDP	BL2MSiQ	BL2AW	BL2PEAC
Module	 Baselynx 2.0 Vert	 Baselynx 2.0 2-in-1 Stand	 Baselynx 2.0 Watch	 Baselynx 2.0 End Cap
Point Value	5	2	1	0
Configuration Example	 0 + 5 + 2 + 1 + 5 + 2 = 15 Points			

If you decide to expand your charging station with more Baselynx 2.0 modules just follow the simple point system to safely build your ultimate charging station.

Each Baselynx module has a predetermined point value as shown in the chart below. To ensure safe and dependable operation do not exceed 15 points.

(**Note:** The Baselynx 2.0 Watch is 1 point)

For questions regarding different configuration options and other product support, contact Scosche Customer Service at [800-363-4490](tel:800-363-4490) ext. 1 or customerservice@scosche.com

SAFETY WARNINGS

NOTES

- If the device's battery is fully discharged it may take a few minutes for it to show that it is charging.
- Devices and Baselynx 2.0 modules may get warm during charging. This is completely normal, and they will gradually cool down after they are fully charged.
- Charging time may vary based on the device's battery capacity, charge level, the condition of the battery and the temperature in the surrounding area.
- To clean your Baselynx, disconnect it from power and wipe with a slightly damp cloth.

WARNINGS

- For indoor use in dry locations only.
- Children should be supervised when using this product
- Do not operate if any part of product appears to be damaged
- Do not attempt to service. Opening housings will expose you to dangerous voltage and risk of electrical shock.

SPECIFICATIONS

- **AC Input** 100-240V~50/60Hz, 2.5A
- **AC Output** 100240V~50/60Hz, 15A
- **Wireless Charging Output** 5.0V= 1A, SW

Scosche Industries

1550 Pacific Avenue

Oxnard, California 93033

Phone [800-363-4490](tel:800-363-4490) x1 / [805-486-4450](tel:805-486-4450) x1

www.scosche.com

©2023 Scosche Industries

Scosche & Baselynx are trademarks of Scosche Industries. Other marks or brands are the property of their respective owners. Devices and or appearance may vary.


Designed in Oxnard, California

SI BL2AWWT-AP 11 /23

BL2AWWT-XV 11 /23

BL2AW 11 /23

Documents / Resources

	<p>Scosche Industries BL2AW BaseLynx 2.0 Modular Charging System [pdf] Owner's Manual IKQBL2AW, IKQBL2AW, BL2AW BaseLynx 2.0 Modular Charging System, BL2AW, BaseLynx 2.0 Modular Charging System, Modular Charging System, Charging System, System</p>
--	---

References

- [User Manual](#)

[Manuals+](#). [Privacy Policy](#)

This website is an independent publication and is neither affiliated with nor endorsed by any of the trademark owners. The "Bluetooth®" word mark and logos are registered trademarks owned by Bluetooth SIG, Inc. The "Wi-Fi®" word mark and logos are registered trademarks owned by the Wi-Fi Alliance. Any use of these marks on this website does not imply any affiliation with or endorsement.