

**SCIWIL**  
**EN08 E Bike**  
**Display**



## SCIWIL EN08 E Bike Display User Guide

[Home](#) » [SCIWIL](#) » SCIWIL EN08 E Bike Display User Guide 

### Contents

- 1 [SCIWIL EN08 E Bike Display](#)
- 2 [Product Information](#)
- 3 [FAQ](#)
- 4 [Safety Notes](#)
- 5 [Overview](#)
- 6 [Operation](#)
- 7 [Documents / Resources](#)
  - 7.1 [References](#)

# SCIWIL

**SCIWIL EN08 E Bike Display**



## Product Information

### Specifications

- Working Voltage: DC 24V/36V/48V/52V/60V
- Rated Working Current: 12mA
- Leakage current: [specification not provided]

### FAQ

#### Q: How do I download the PDF user manual?

A: Scan the QR code provided on the product or visit the Changzhou Sciwil E-Mobility Technology Co., Ltd. website for a downloadable PDF version.

#### Q: What should I do in case of a display error?

A: Refer to the error interface on the display to identify the issue and consult the user manual for troubleshooting steps. If needed, contact customer support for further assistance.

E-Bike Display

**Model** EN08

**Protocol** UART 2.0

**Version** V6.01



Scan QR Code  
to Download PDF



Wechat



Website

## Safety Notes

PLEASE TAKE CAUTION WHEN USE DO NOT PLUG OR UNPLUG THE DISPLAY WHILE YOUR E-BIKE IS POWERED ON.

- AVOID CLASHES OR BUMPS TO THE DISPLAY.
- AVOID USING IN HEAVY RAINS, SNOWS OR LONG EXPOSURE TO STRONG SUNLIGHT. DO NOT TEAR THE WATER-PROOF FILM ON THE SURFACE OF THE SCREEN, OTHERWISE THE WATER-TIGHT PERFORMANCE OF THE PRODUCT MAY BE DEGRADED.
- DO NOT PLUG OR UNPLUG THE DISPLAY WHILE THE SYSTEM IS POWERED ON. UNAUTHORIZED ADJUSTMENT TO DEFAULT SETTINGS IS NOT SUGGESTED, OTHERWISE NORMAL USE OF YOUR E-BIKE CAN NOT BE GUARANTEED.
- WHEN THE DISPLAY PRODUCT DOES NOT WORK PROPERLY, PLEASE SEND IT FOR AUTHORIZED REPAIR IN TIME.

## Overview

### 1. Product Name and Model

Product Name: E-Bike Display

Product Model: EN08

### 2. Product Introduction

EN08 features high-brightness anti-glare LCD and minimalist interface, working as an ideal HMI solution for EN15194 electric bikes.

### 3. Specifications

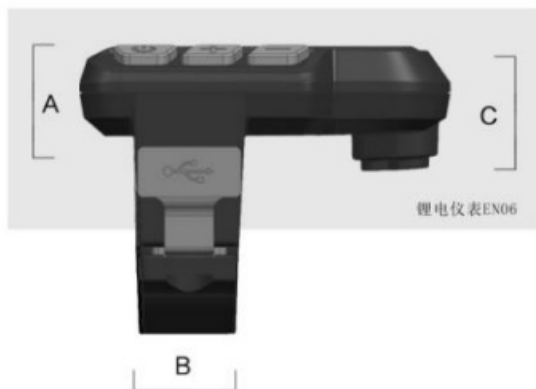
1. Working Voltage: DC 24V/36V/48V/52V/60V
2. Rated Working Current: 12mA
3. Leakage current: <1uA
4. Screen Size: 2.0" LCD
5. Communication Type: UART (by default)
6. Working Temperature: -20°C ~ 60°C
7. Storage Temperature: -30°C ~ 70°C
8. Waterproof Rating: IP65

### 4. Function

1. Boot password
2. System unit switch (km/h or mph)
3. Assist Level Control and Display
4. Battery indication: battery level percentage, low voltage indication
5. Speed display (in km/h or mph) real-time speed (SPEED), max speed (MAX), average speed (AVG)
6. Distance single-trip distance (TRIP), total travel distance (ODO)

7. Assist Mode Control and Display (3/5/9 levels)
8. Walk assist mode
9. Front light indication: front light status supported by controller.
10. Error code indication
11. Riding Info: Braking Status, Front Light Status, Cruise, Low Voltage.
12. Turning Signals: This function works with controller.
13. Dual Drive Control and Display: This function works with controller.
14. Status of Double Battery Packs: optional, works with controller.
15. NFC Function: optional.
16. Bluetooth Connection: optional, support OTA upgrade via mobile phone.

## 5. Size



Dimension A-----14.1mm

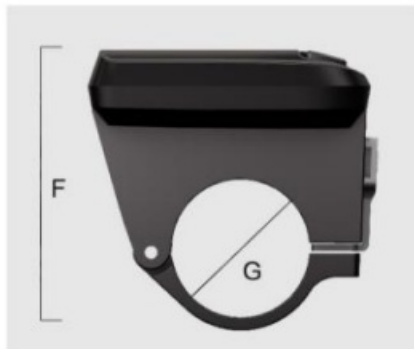
Dimension B-----16.0mm

Dimension C-----19.8mm



Dimension D-----46.0mm

Dimension E-----60.1mm

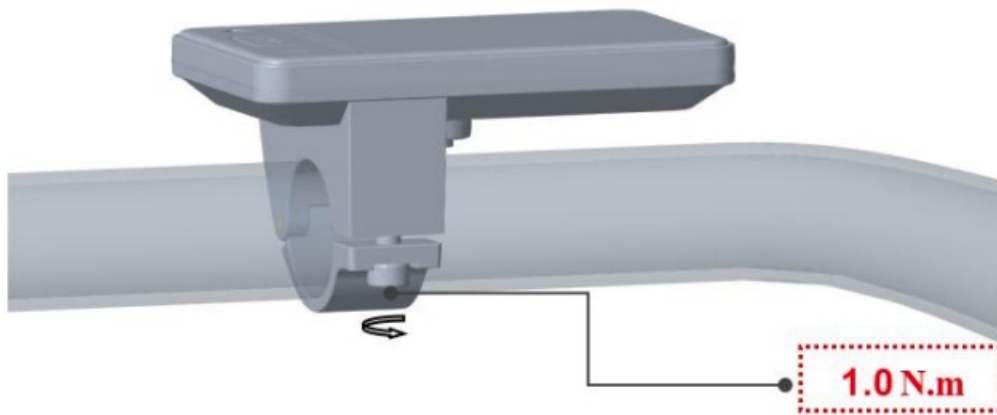


Dimension F-----46.5mm

Dimension G-----φ22.2mm

## 6. Assembly

1. Open the holder ring/rubber spacer of the display and fix the display on the handlebar, adjust it to a proper facing angle. Use a M4 Hex Wrench to fix and tighten the screws. Standard fixing torque: 1N·m.  
\*Damage due to excessive fixing torque is not covered by warranty.



2. Open the holder ring/rubber spacer of the keypad and fix it on the handlebar, adjust it to a proper facing angle. Use a M3 Hex Wrench to fix and tighten the screws. Standard fixing torque: 1N·m.

\*Damage due to excessive fixing torque is not covered by warranty.

3. Plug the 5-pin connector of the display to the coupling connector of the Controller.

#### 7. Serial Code

Example:

**111 22 333333 555 6666 36V**

← Marked at the back of display

- 111 Customer Code
- 22 Protocol Code
- 333333 P.O. Date YYMMDD)
- 555 Order Receiving Number
- 6666: Production Date YYMM)

## Operation

### Display Interface

### Riding Interface

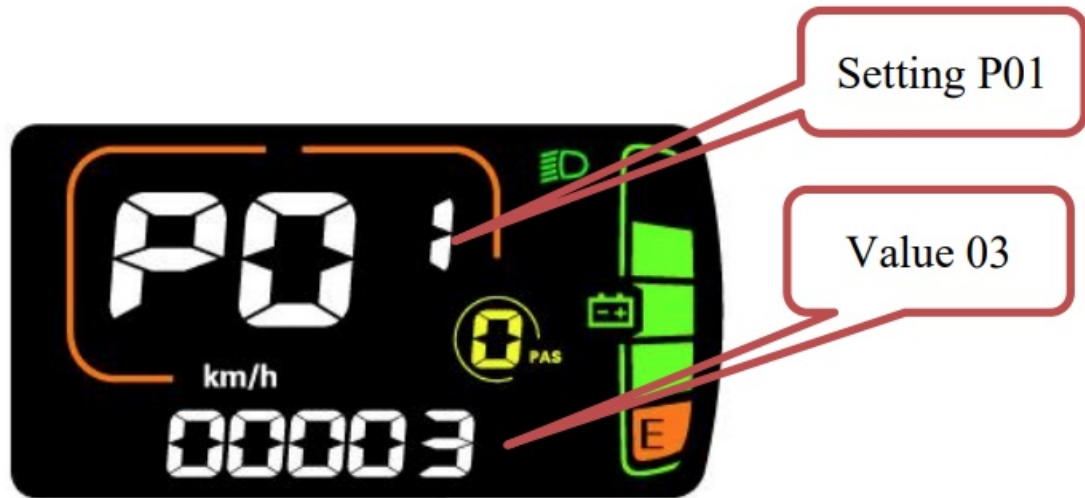


- Status: Real-time Riding Status: Bluetooth, Front Light, Brake, Low Voltage, Turning, Cruise, Drive Status, etc.
- Battery Status: Residual Battery Percentage
- Multi-Function Section: ODO (total range), TRIP (single ride range), MAX (max. speed), AVG (average speed),

TIME (riding time), VOL (battery voltage), Wh (motor power), CUR (current), etc.

- Assist Level Mode: 3/5/9 Levels available.

### Setting Interface



In the above interface: Setting Item: P01, Parameter Value: 03

### Error Interface




In the above interface: Error Indicator: ERROR, Error Code: E10

### Key Pad

SWK2 Keypad Illustration:



There are 3 keys on the keypad, in the following instructions:

-  is called On/Off Key
- + is called Plus Key
- – is called Minus Key

### Key Operation

Key operation guide as follows:

Press and Hold: means press and hold the key(s) for more than 2s.

Press: means press the key(s) for less than 0.5s.

#### 1. On/Off

Turn on the Display: When the display is off, press and hold the On/Off Key to turn on the display, it will show boot interface and then enter riding interface. (If boot password is activated, enter the boot password at start).

Turn off the Display: When the display is on, press and hold the On/Off Key, the display will be turned off. If no operation is engaged for 10min

(0km/h), the display will be auto-off. Auto-off time can be set in the Settings.

#### 2. Assist Level

Press the Plus Key or Minus Key to switch assist levels. There are 5 levels by default: 0/1/2/3/4/5. 0 means no assist power.

#### 3. Toggle Displays

When the display is on, press the On/Off Key to toggle among ODO (total range), Trip (single trip range), TIME (riding time) etc.

#### 4. Light On/Off

Turn on the Front Light: when the front light is off, press and hold the Plus Key to turn it on, and the light icon will be shown on the riding interface (to remove this functions, please reconfigure the controller).

Turn off the Front Light: when the front light is on, press and hold the Plus Key to turn it off, and the light icon will be off on the riding interface.

#### 5. Walk Assist Mode

Engage Walk Assist Mode: On the riding interface, press and hold the Minus Key to enter walk assist mode.

Hold the Minus Key to engage walk assist mode, the walk mode icon will be shown on the riding interface, the real-time speed will be shown in the speed section.

Disengage Walk Assist Mode: release the Minus Key to disengage the walk assist mode, the icon will off on the riding interface.

## 6. Settings

### Setting Operations

1. Enter the Settings: when the display is on, press and hold the Plus Key and the Minus Key together to enter the Settings. Available setting items include: system voltage, wheel size (inch), magnetic steel number for speed gauge, speed limit etc (please refer to 4.2 Setting Items).
2. Adjust Settings: on the Settings interface, press the Plus Key or the Minus Key to set values for items. The value will blink after change. Press the On/Off Key to save the set value and switch to next item.
3. Save and Exit Settings press and hold again the Plus Key and the Minus Key together to exit the Settings and save the set value. The system will save and exit automatically if there's no operation for 10s.

### Setting Items

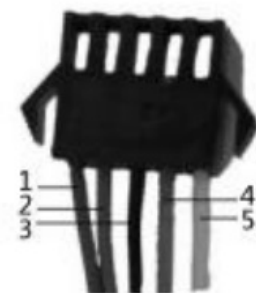
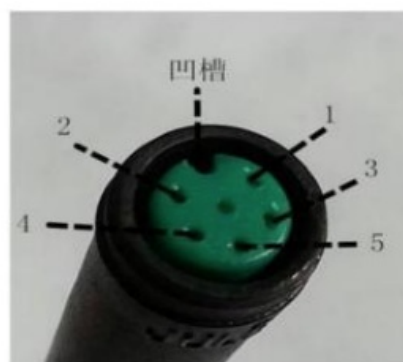
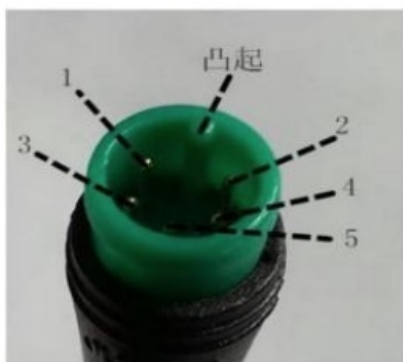
- P00: Factory Reset: optional.
- P01: Backlight Brightness. 1: darkest; 3: brightest.
- P02: System Unit. 0: km (metric); 1: mile (imperial).
- P03: System Voltage: 24V/36V/48V/60V/72V.
- P04: Auto-Off Time  
0: never, other value means auto-off time interval. Unit: minute
- P05: Pedal Assist Level  
0-3 Level Mode 1-3 Level Mode (no Level0)  
0-5 Level Mode 1-5 Level Mode (no Level0)  
0-9 Level Mode 1-9 Level Mode (no Level0)
- P06: Wheel Size. Unit: inch; Increment: 0.1.
- P07: Motor Magnets Number for Speed Gauge. Range: 1-100
- P08: Speed Limit. Range: 0-100km/, communications status (controller-controlled). The max speed will be kept constant at the set value.  
Error Value:  $\pm 1$ km/h (applicable to both the PAS/throttle mode)  
Note: The above-mentioned values are measured by metric unit (km/h). When the system unit is set to imperial unit (mph), the speed displayed will be automatically switched to corresponding value in imperial unit, however the speed limit value in the imperial unit interface won't change accordingly.
- **P09: Direct Start / Kick-to-Start**
  - 0: Direct Start (Throttle-on-demand);
  - 1: Kick-to-Start
- **P10: Drive Mode Setting**
  - 0: Pedal Assist – The pedal assist level decides the motor power output. In this status the throttle does not work.
  - 1: Electric Drive – The e-bike is only controlled by the throttle. In this status the pedal assist does not work.

- 2: Pedal Assist + Electric Drive (electric drive does not work in direct-start status)
- P11: Pedal Assist Sensitivity. Range: 1-24.
- P12: Pedal Assist Starting Intensity. Range: 0-5.
- P13: Magnets Number in Pedal Assist Sensor. 3 Types: 5/8/12pcs.
- P14: Current Limit Value. By default: 12A. Range: 1-20A.
- P15: Display Low Voltage Value.
- P16: ODO Clearance. Press and hold the Plus key for 5s and ODO value will be cleared.
- P17: Cruise. 0: cruise function deactivated, 1: cruise function activated.

## Error Code

Error Code (decimal)	Status	Note
E00	Normal	
E01	Reserved	
E02	Brake Error	
E03	PAS Sensor Error (Riding Mark)	Not Realized
E04	Walk Assist Mode	
E05	Real-Time Cruise	
E06	Low Voltage Protection	
E07	Motor Error	
E08	Throttle Error	
E09	Controller Error	
E10	Communications Error	
E12	BMS Communications Error	
E13	Front Light Error	

## Connection



**Display to Controller**

**Controller to Display**

**Controller Connector**



## **Manuals+. Privacy Policy**

This website is an independent publication and is neither affiliated with nor endorsed by any of the trademark owners. The "Bluetooth®" word mark and logos are registered trademarks owned by Bluetooth SIG, Inc. The "Wi-Fi®" word mark and logos are registered trademarks owned by the Wi-Fi Alliance. Any use of these marks on this website does not imply any affiliation with or endorsement.