

# Scimagic RC-CST024-W/4 Wi-Fi Smart 4CH Remote Control Receiver Installation Guide

## Contents

- [1 Scimagic RC-CST024-W/4 Wi-Fi Smart 4CH Remote Control Receiver](#)
- [2 PRODUCT INFORMATION](#)
- [3 Installation instructions](#)
- [4 Download the link APP](#)
- [5 Check the signal strength](#)
- [6 Documents / Resources](#)
  - [6.1 References](#)



## Scimagic RC-CST024-W/4 Wi-Fi Smart 4CH Remote Control Receiver

### PRODUCT INFORMATION

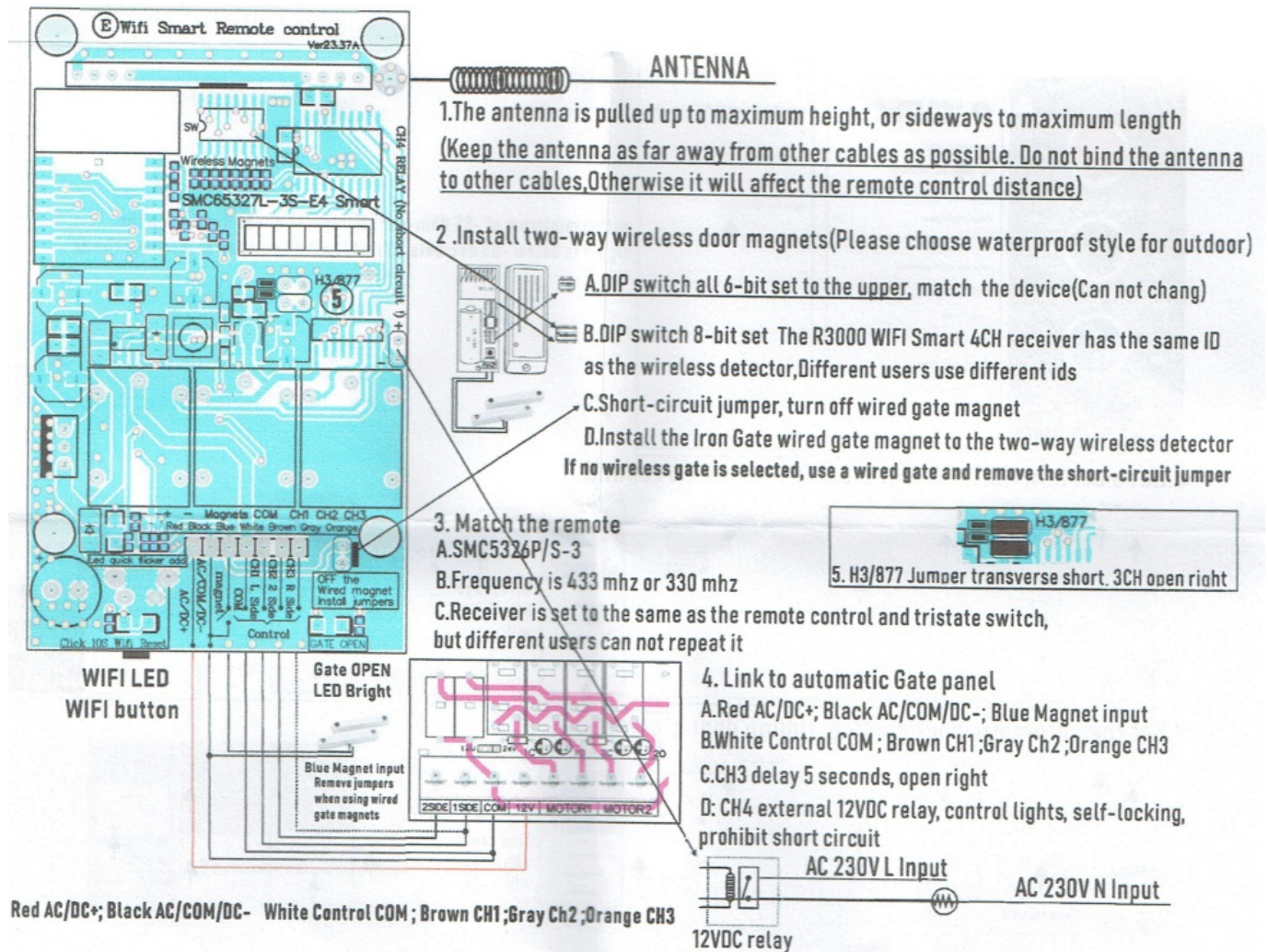
**Note:** Before installation, please confirm the installation location of this device, mobile phone can receive home WI-FI, if not, please increase AP After installation, run the signal test described on the last page of the manual, with a minimum of -85 dbm and a maximum of -30 dbm. When the signal is below -85 decibels, adjust the WIFI position or increase the AP.

1. Support for two-way wireless detectors Wireless Gate magnetic, And wired gate magnets
2. Support Open Door, Close real-time APP information notification, phone SMS notification, call notification
3. Supports automatic door opening/closing, timed automatic door opening/closing, and scene control linkage
4. **Working Sensitivity and distance:** -1220B, Open the distance 3000M (With the T3000)
5. **Supports APP:** SmartLife / Tuya/WIFISMARTCONTROL
6. **WIFI frequency:** 2.46 IEEE 802.11b
7. **Remote control Frequency:** 433MHZ/330MHZ optional ( CST15/015 330MHZ CST16/016 433MHZ CST17/017 433MHZ CST22/022 433MHZ)
8. **Remote control IC:** TAIWAN SMC5326P/S
9. **Access:** 2CH/ 4CH Remote control
10. **Operating Voltage Current:** DC12-40V / AC9-28V ;DC12V 60MA MAX

## Installation instructions

### WIFI LED status

- LED off, there is no link network
- LED bright, normal work
- LED fast flash, into the fast distribution mode
- LED slow flash, into the hot distribution network



### Download the link APP

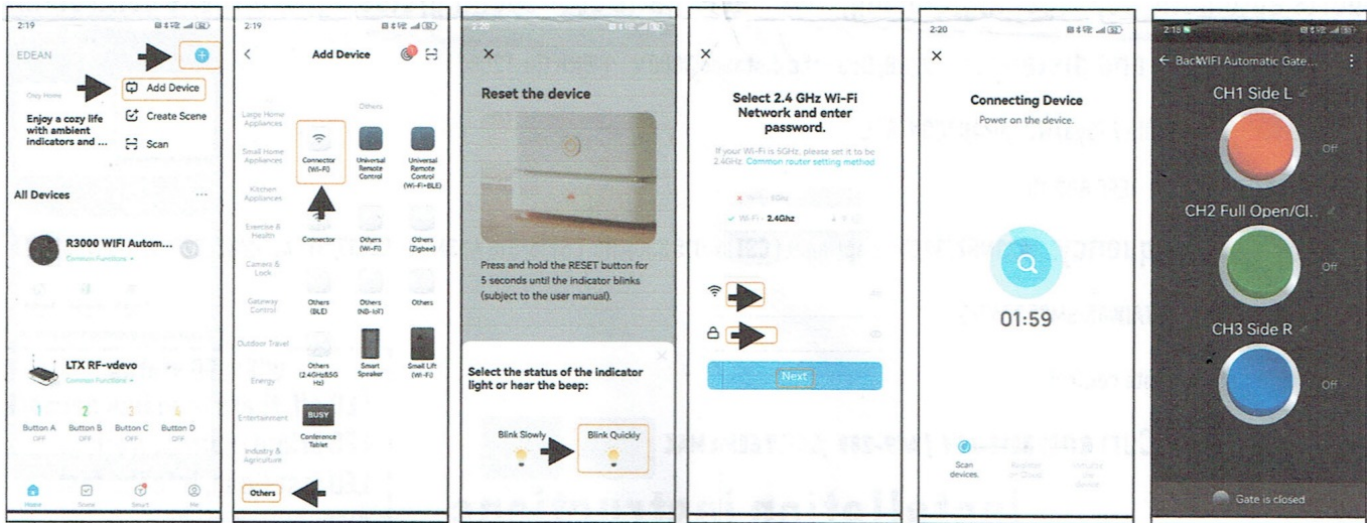
- A. Scan QR codes to download apps, or Google Market Search for SMART LIFE, App note users
- B. phones Connect to 2.4 wi-fi and turn on Bluetooth
- C. Press the WIFI button for 10 seconds, and the LED flash quickly, if not, repeat for 10 seconds, into the fast distribution network
  - D. Click on the top right corner of the APP to add the device, click on the bottom corner of the other, select the WIFI connector, and then next, enter the WiFi user name and password.



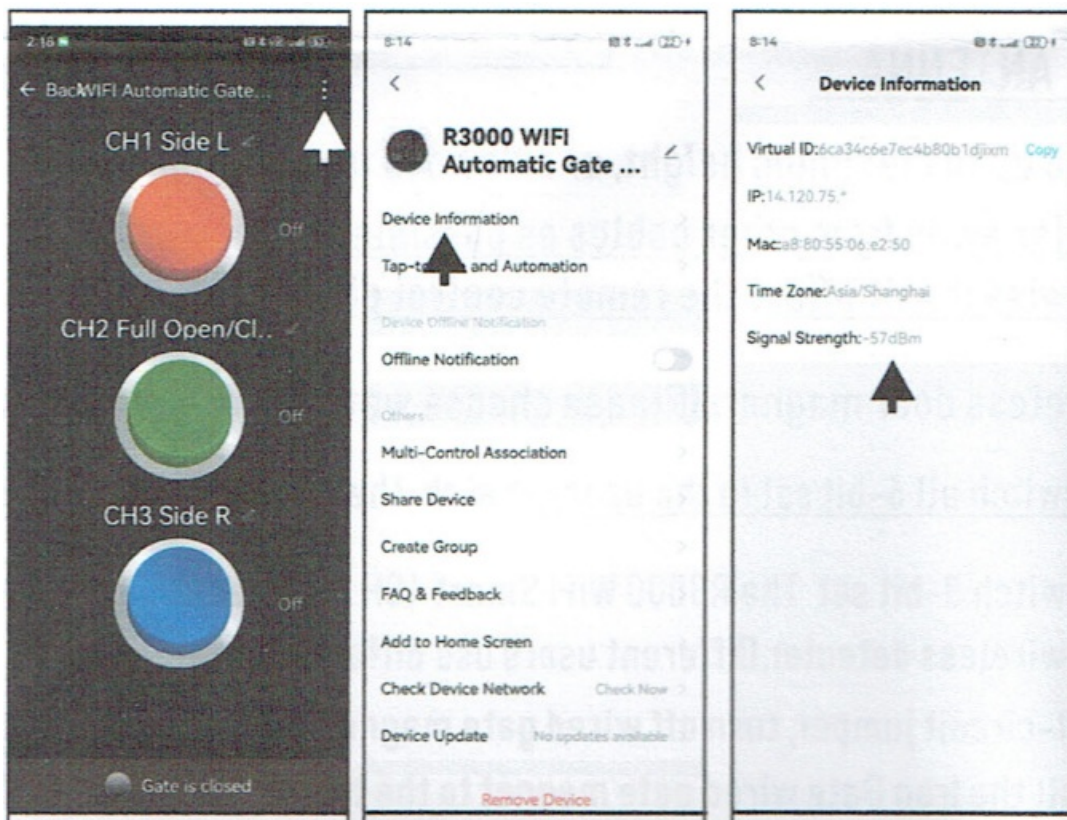


SMART LIFE APP

If the Bluetooth connection is complete, it will automatically pop out and click install



Check the signal strength

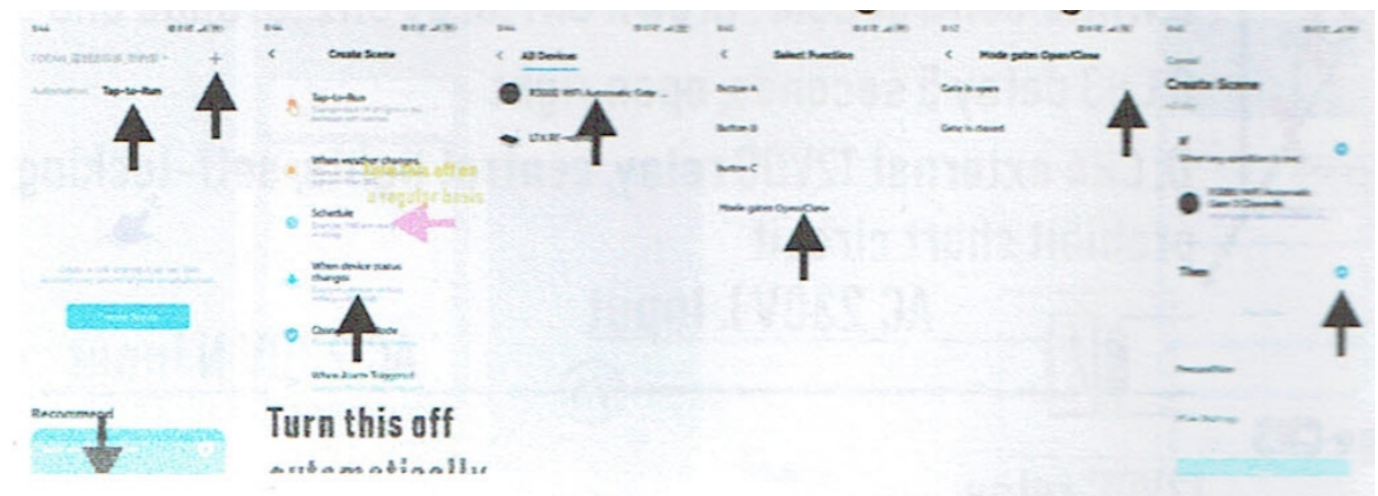


With a minimum of -85 dbm and a maximum of -30 dbm. When the signal is below -85 decibels, adjust the WIFI position or increase the AP

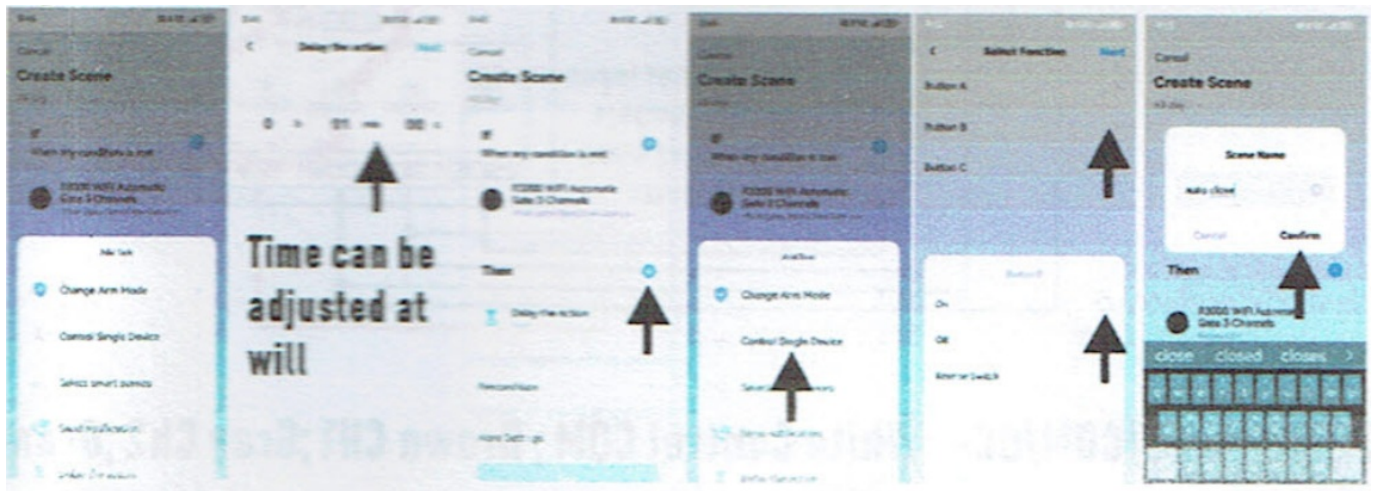
Set a certain time without closing the door to remind



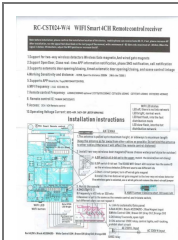
Set the automatic door closing, timing door closing







## Documents / Resources



[Scimagic RC-CST024-W/4 Wi-Fi Smart 4CH Remote Control Receiver](#) [pdf] Installation Guide  
 RC-CST024-W 4 Wi-Fi Smart 4CH Remote Control Receiver, RC-CST024-W 4, Wi-Fi Smart 4CH Remote Control Receiver, Smart 4CH Remote Control Receiver, 4CH Remote Control Receiver, Remote Control Receiver, Control Receiver, Receiver

## References

- [User Manual](#)

[Manuals+.](#) [Privacy Policy](#)

This website is an independent publication and is neither affiliated with nor endorsed by any of the trademark owners. The "Bluetooth®" word mark and logos are registered trademarks owned by Bluetooth SIG, Inc. The "Wi-Fi®" word mark and logos are registered trademarks owned by the Wi-Fi Alliance. Any use of these marks on this website does not imply any affiliation with or endorsement.