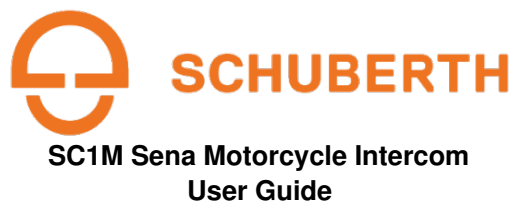




## SCHUBERTH SC1M Sena Motorcycle Intercom User Guide

[Home](#) » [SCHUBERTH](#) » SCHUBERTH SC1M Sena Motorcycle Intercom User Guide 

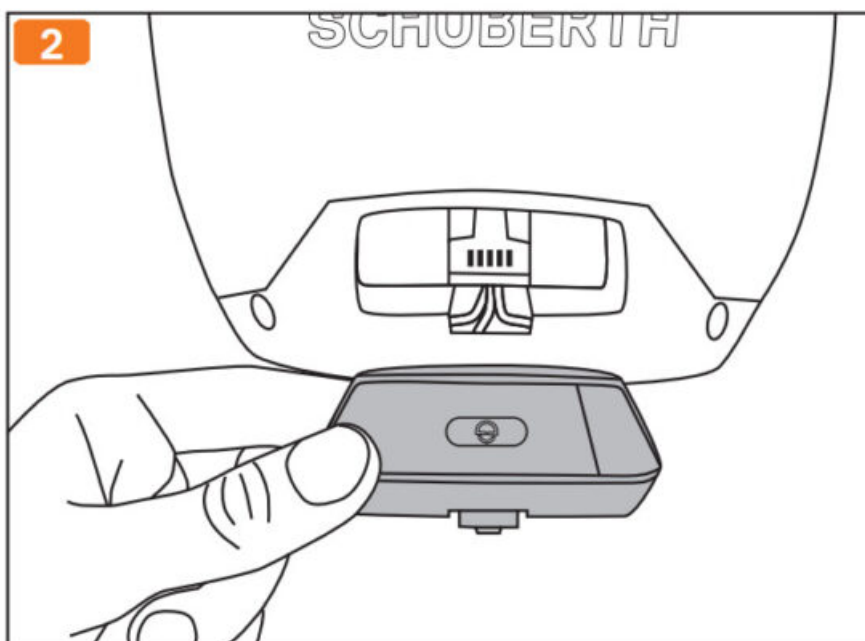
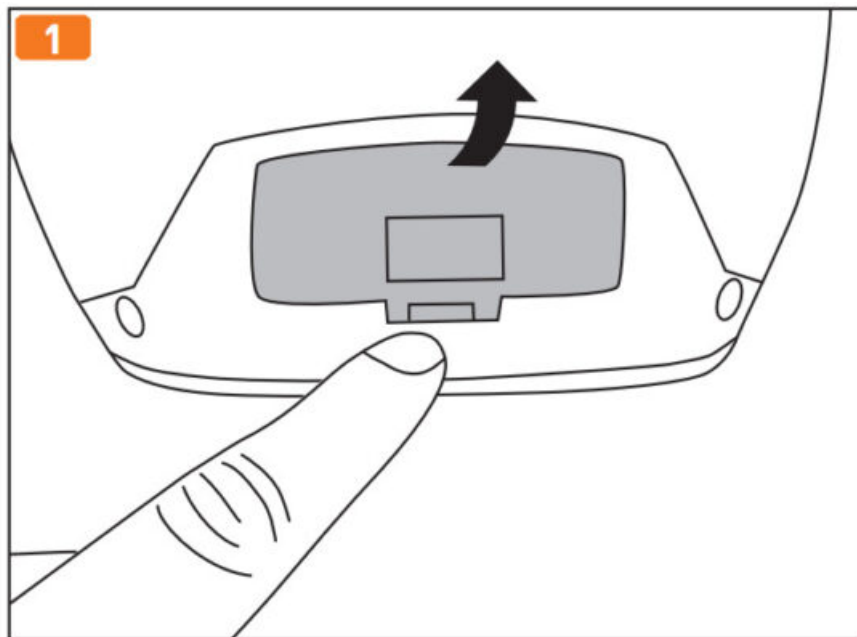


We recommend you to read the operating instructions carefully in addition to the Quick Start Guide, in order to understand all the functions and the correct operation. To find the complete manual please use the smartphone app or go to: [WWW.SCHUBERTH.COM](http://WWW.SCHUBERTH.COM)

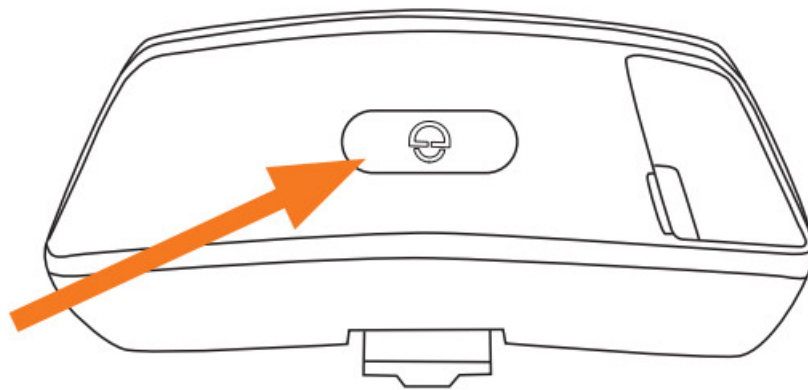
## Contents

- [1 Installation](#)
- [2 Basic Function](#)
- [3 Intercom](#)
- [4 Mobile Phone](#)
- [5 Music](#)
- [6 FM Radio](#)
- [7 Smartphone App](#)
- [8 Documents / Resources](#)
  - [8.1 References](#)
- [9 Related Posts](#)

## Installation



Power On  
Power Off



← 1sec



Button: +

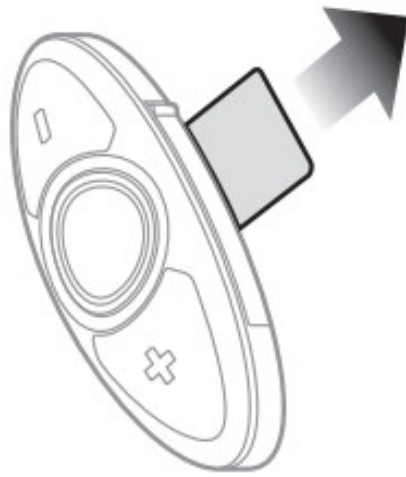


Button: -



Button: Center Button

**Battery**

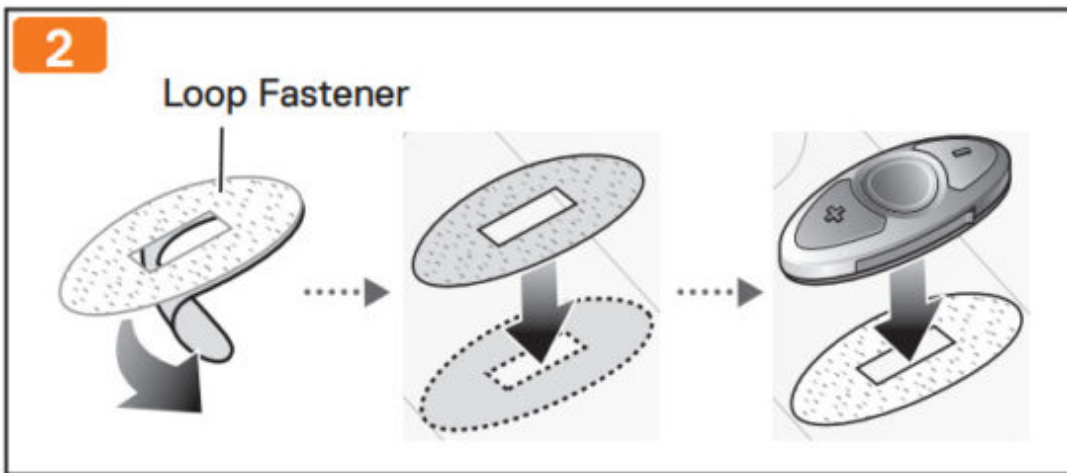
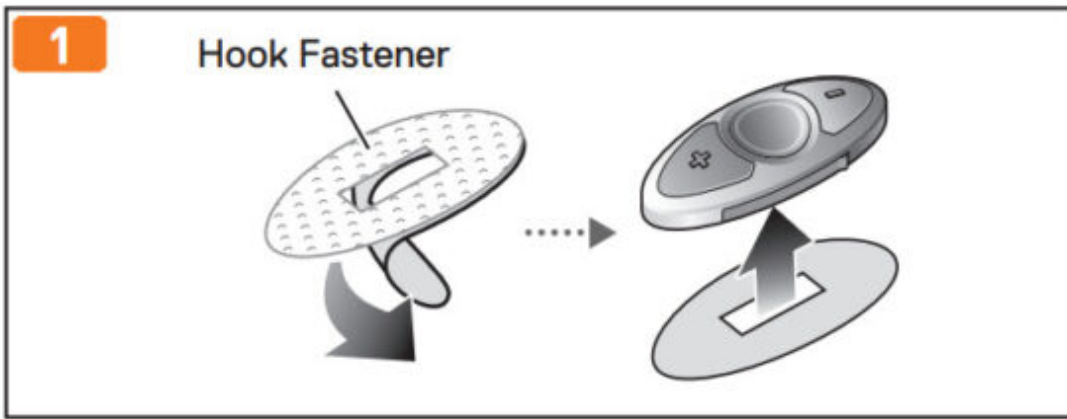


Remove

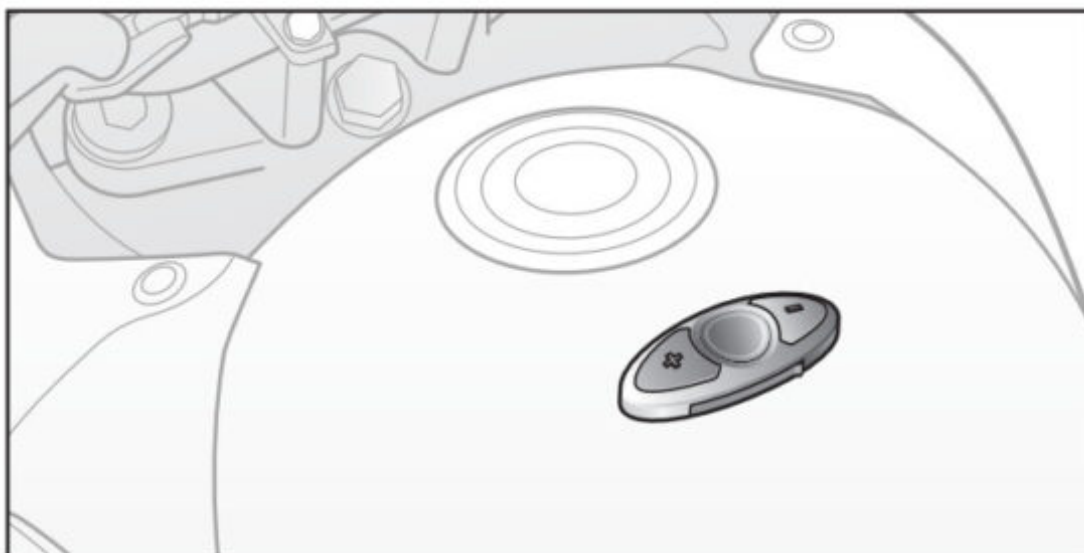
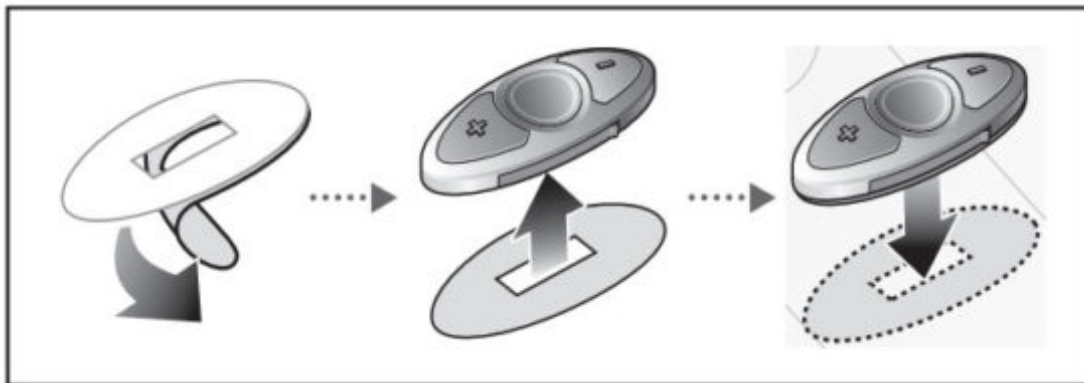
Using the clip



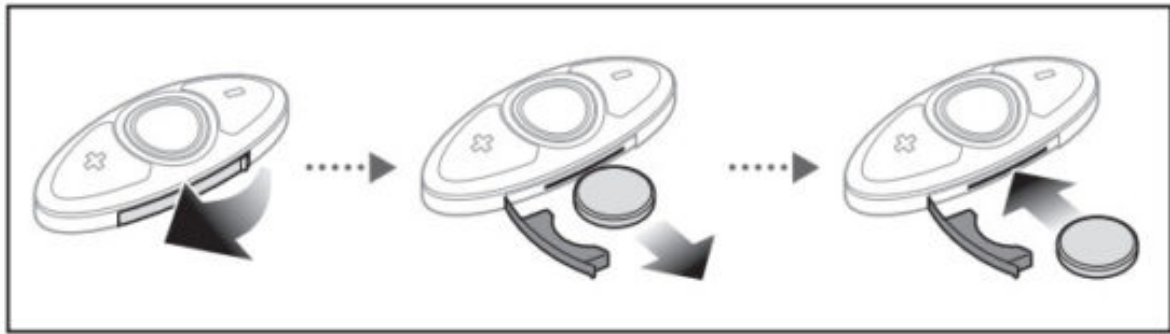
Using the hook and loop fastener



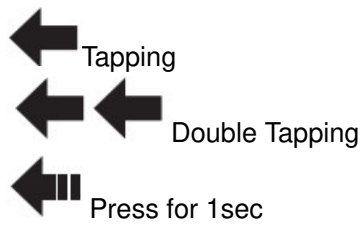
Using the tape



## Replace Batterie



## Button Operation



## Batterie



LED

70 ~ 100%



30 ~ 70%



0 ~ 30%



## Basic Function

### Power On



### Power Off



Reset



Volume Adjustment



Intercom

Pairing



Start Group



 „Group intercom connected“

End Group Intercom



 „Group intercom terminated“

Mobile Phone

Mobile phone pairing



 „Configuration Menu“



 „Phone paring“

Answer mobile phone call



End mobile phone call



Music

Play & Pause Bluetooth music



Track forward



FM Radio

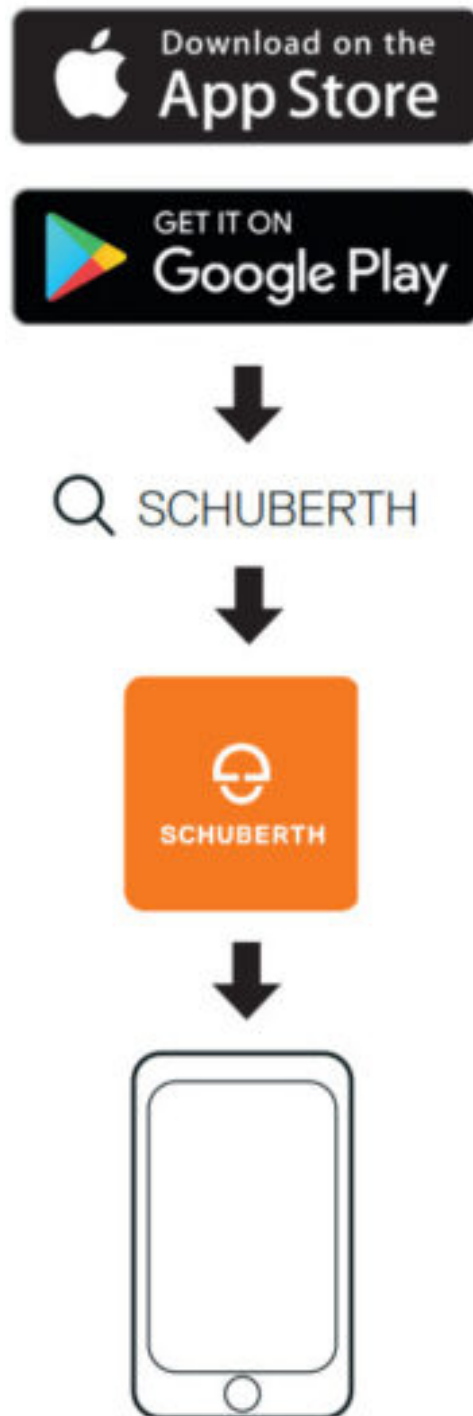
Radio On & Off



Seek station up



## Smartphone App



### Notice

Attaching the product to the helmet is considered a modification to the helmet and may void your helmet's warranty or compromise your helmet's functionality. This may entail risks during an accident, so be fully aware of this fact before using the product. Should you not accept this fact, you may return the product for a full refund. In some regions, it is prohibited by law to ride motorcycles while wearing headsets or earbuds. Therefore be certain you are aware of all relevant laws in the region where you are using the product and are sure that you comply with them.

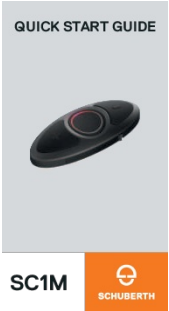
**Producer:** Sena Technologies, Inc  
19, Heolleung-ro 569-gil, Gangnam-gu  
Seoul 06376, Republic of Korea

**Importer in Europe:** SCHUBERTH GmbH  
Stegelitzer Straße 12  
D-39126 Magdeburg, Germany  
**Importer in US:** SCHUBERTH North America  
9920 Pacific Heights Blvd., Suite 150  
San Diego, CA 92121


Subject to change. Not responsible for mistakes or printing errors.

[WWW.SCHUBERTH.COM](http://WWW.SCHUBERTH.COM)

## Documents / Resources

	<p><a href="#">SCHUBERTH SC1M Sena Motorcycle Intercom</a> [pdf] User Guide SC1M, Sena Motorcycle Intercom, SC1M Sena Motorcycle Intercom</p>
---	---

## References

-  [SCHUBERTH Helme für Motorrad, Car Racing, Arbeitsschutz, Feuerwehr, Behörden & Militär - SCHUBERTH](#)