

Schröder
CLB1 Circle
LED Base for
Hestia MIDI



Schröder CLB1 Circle LED Base for Hestia MIDI Installation Guide

[Home](#) » [Schröder](#) » Schröder CLB1 Circle LED Base for Hestia MIDI Installation Guide 

Contents

- [1 Schröder CLB1 Circle LED Base for Hestia MIDI](#)
- [2 Product Usage Instructions](#)
- [3 DIMENSION](#)
- [4 INSTALLATION INSTRUCTION](#)
- [5 Documents / Resources](#)
 - [5.1 References](#)
- [6 Related Posts](#)

Schröder

Schröder CLB1 Circle LED Base for Hestia MIDI



Specifications:

- Product Name: CIRCLE LED BASE 1&2 for HESTIA MIDI
- Dimensions: 625mm x 132mm x 257mm
- Weight: 185.7mm
- Compatible with HESTIA MIDI luminaire
- Adaptation plate size: 236mm x 83mm

Product Usage Instructions

Preparation

1. Disconnect the luminaire from the network.
2. Clean the surface of the luminaire.
3. Open the luminaire to access the gear compartment and light source.

\Installation Steps

1. Disconnect mains power.
2. Disconnect HID cables.
3. Remove screws holding the optical compartment. Keep them for later use.
4. Remove the optical compartment.
5. Remove optical compartment connection to gear plate.
6. Remove gearplate.
7. Apply silicone sealant in the sealing groove.
8. Place CLB adaptation plate into the luminaire.
9. Fix the adaptation plate using clamps and screws previously removed.
10. Connect the earthing cable of the adaptation plate to the luminaire body.

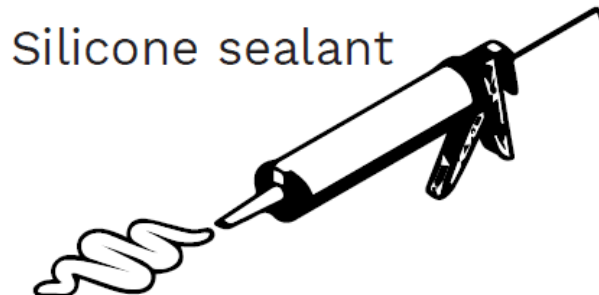
11. Connect mains cable to CLB unit.
12. Fasten the adaptation plate and clamps with screws (tightening torque: 2Nm).
13. Close the lock on the bottom side of the luminaire.

Frequently Asked Questions (FAQ):

Q: Can I use CLB2 with HESTIA MIDI?

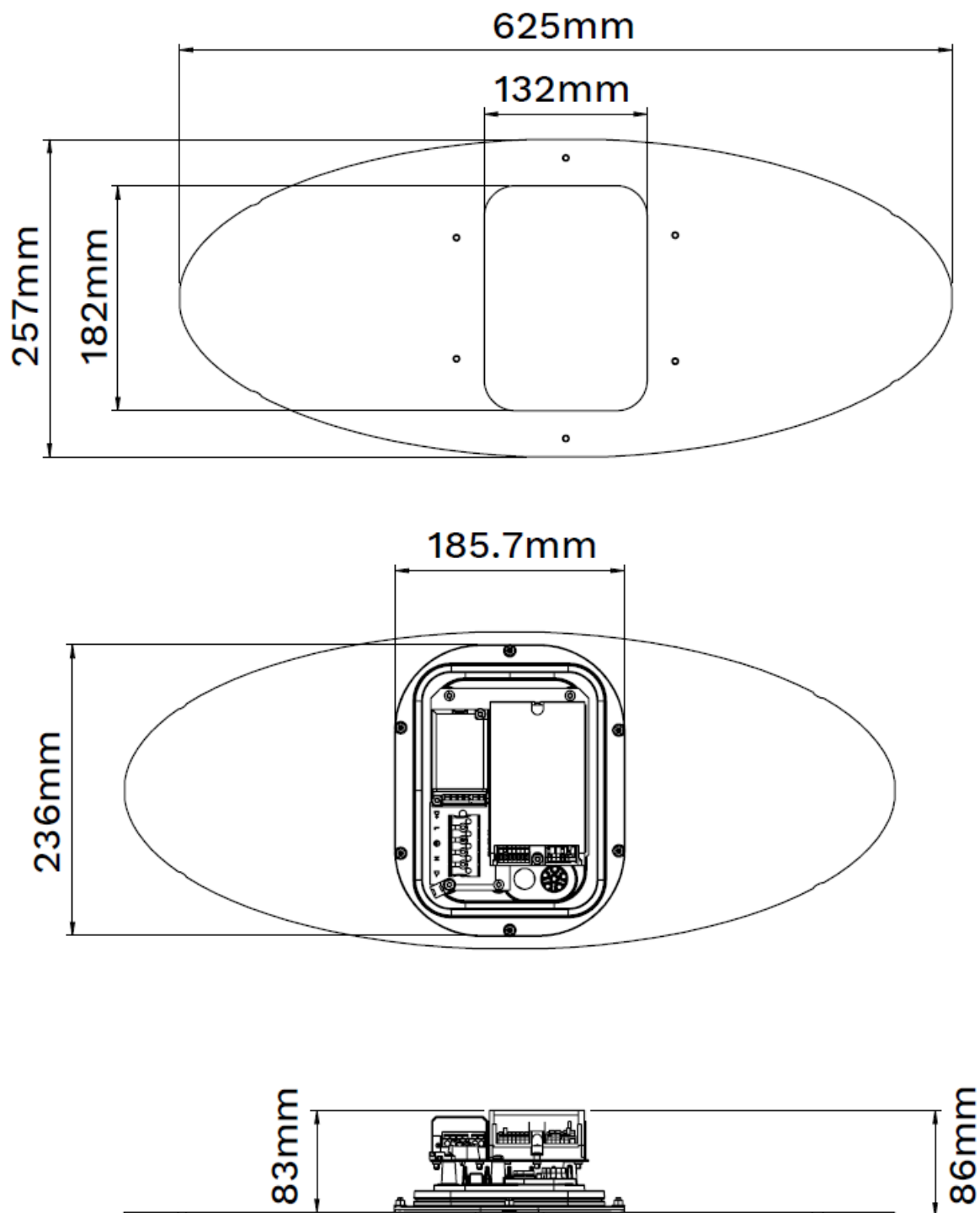
A: Yes, CLB2 is also available for HESTIA MIDI with the same adaptation plate size dimensions, only the cut-out is different.

TOOLS REQUIRE



All the tightening torques values are given for assemblies without the addition of a grease-decreasing friction.

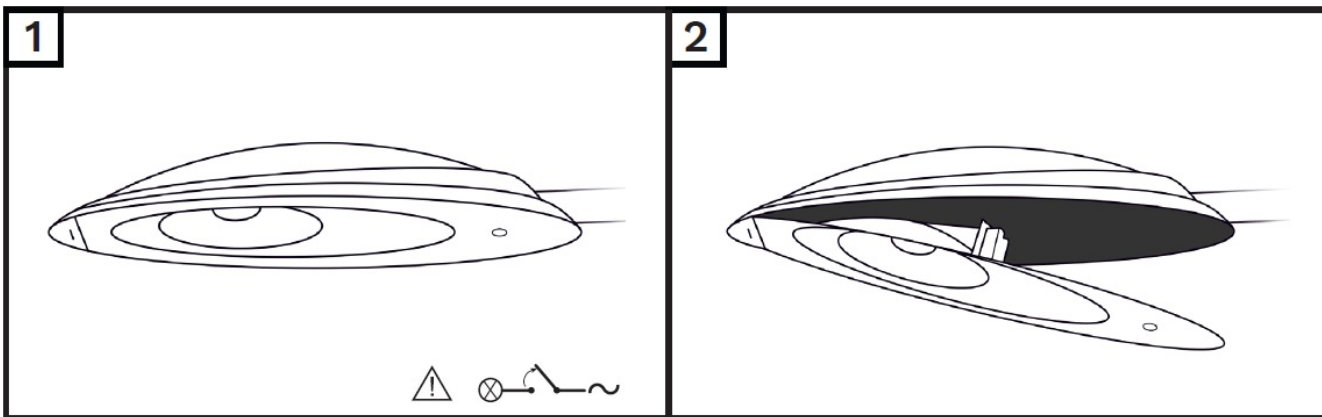
DIMENSION



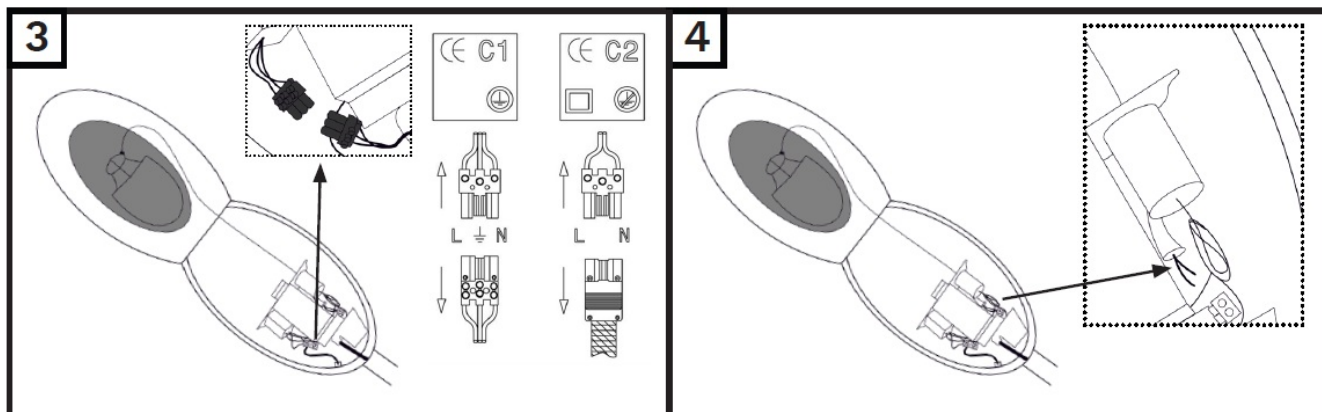
CLB2 is also available for HESTIA MIDI, with the same adaptation plate size dimensions (only the cut-out being different)

INSTALLATION INSTRUCTION

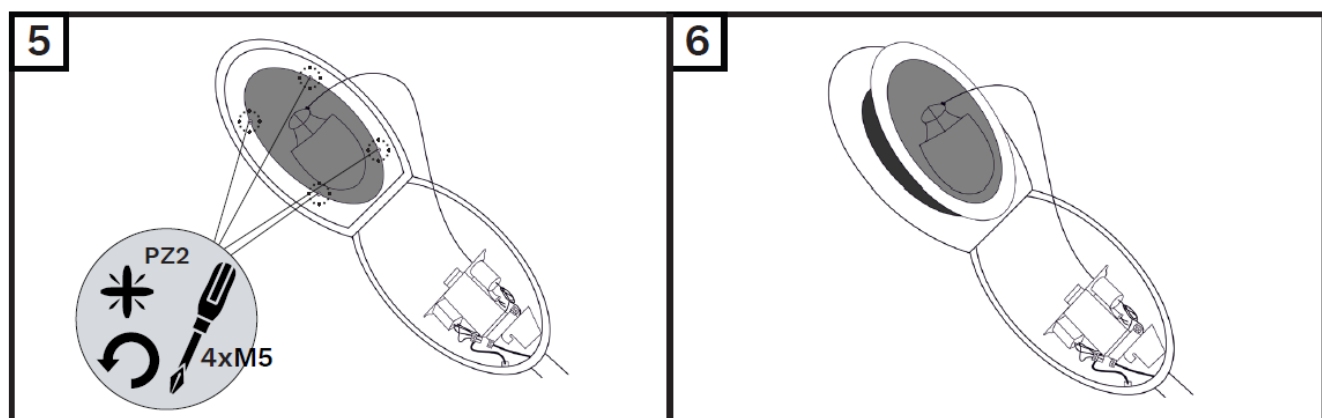
1. Disconnect the luminaire from network and clean the surface
2. Open the luminaire for gear compartment and light source access



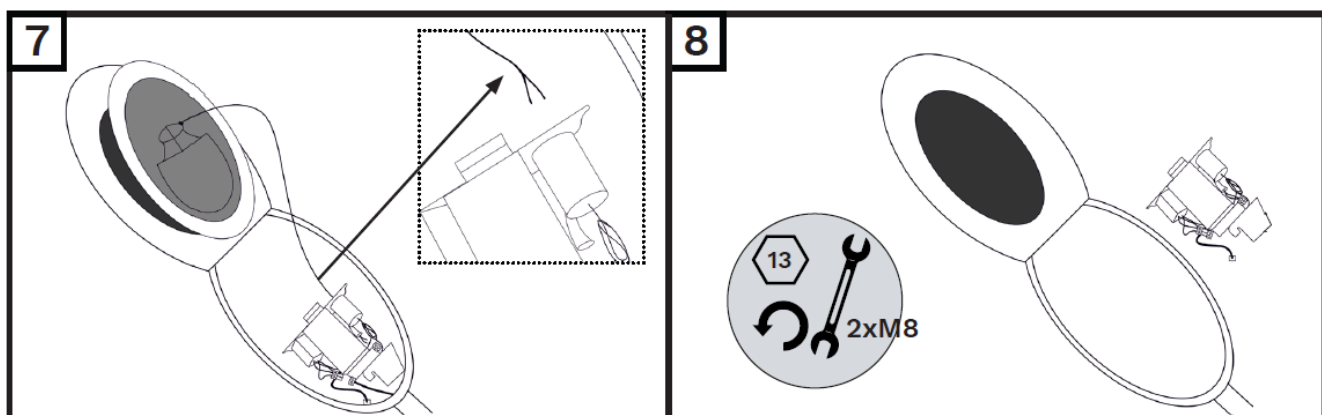
3. Disconnect mains
4. Disconnect HID cables



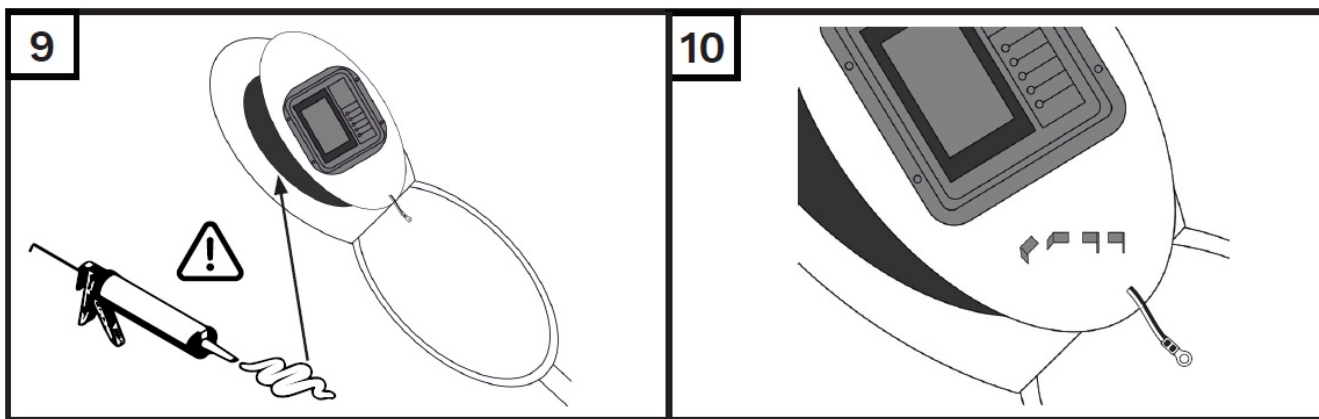
5. Remove screws holding the optical compartment. KEEP THESE FOR LATER USE!
6. Remove optical compartment



7. Remove optical compartment connection to gear plate
8. Remove gear plate



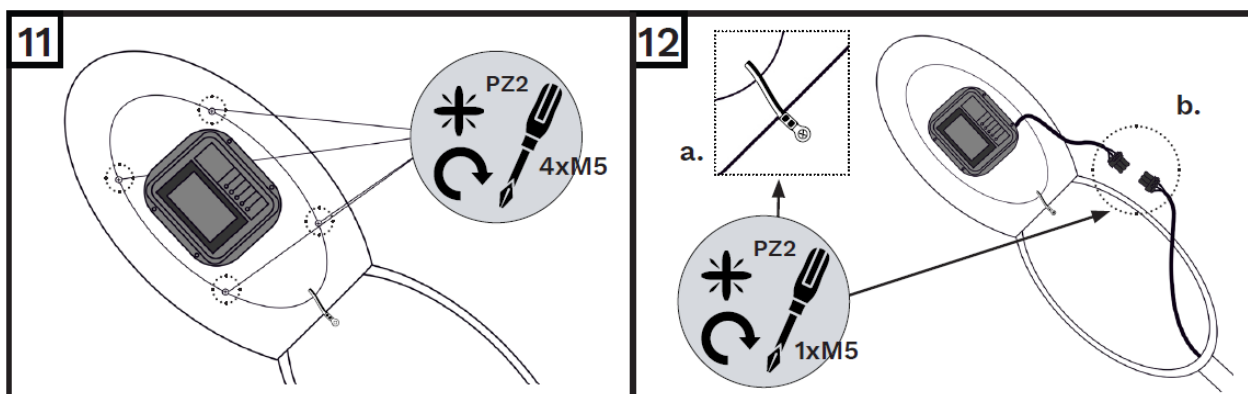
9. Use silicone sealant in the sealing groove and place CLB adaptation plate into the luminaire
10. Fix the adaptation plate into position in the luminaire body with the clamps provided and the screws previously removed



11. Fasten the adaptation plate and clamps with the screws (tightening torque: 2Nm)

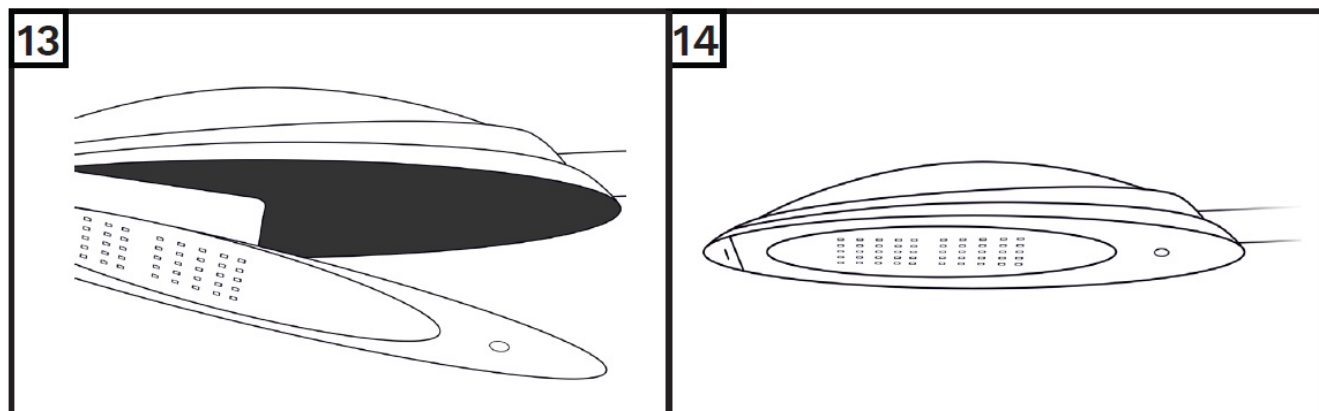
12. Connect earthing cable of the adaptation plate to luminaire body

1. Connect mains cable to CLB unit



13. Close the lock on the bottom side of the luminaire

14. Connect the assembly back on the network



www.schreder.com

Documents / Resources

	<p>Schneider CLB1 Circle LED Base for Hestia MIDI [pdf] Installation Guide CLB1, CLB1 Circle LED Base for Hestia MIDI, Circle LED Base for Hestia MIDI, LED Base for Hestia MIDI, Hestia MIDI, MIDI</p>
--	---

References

- [User Manual](#)

[Manuals+](#), [Privacy Policy](#)

This website is an independent publication and is neither affiliated with nor endorsed by any of the trademark owners. The "Bluetooth®" word mark and logos are registered trademarks owned by Bluetooth SIG, Inc. The "Wi-Fi®" word mark and logos are registered trademarks owned by the Wi-Fi Alliance. Any use of these marks on this website does not imply any affiliation with or endorsement.