

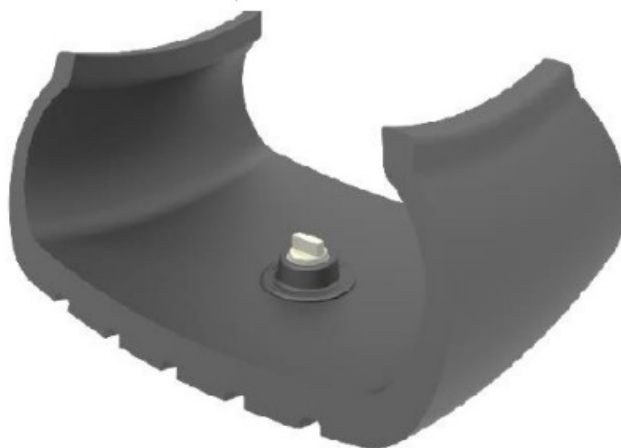
[Home](#) » [Schrader Electronics](#) » **SCHRADER ELECTRONICS ETMS02 Tyre Pressure Monitoring Sensor User Manual** 

Contents [[hide](#)]

- [1 SCHRADER ELECTRONICS ETMS02 Tyre Pressure Monitoring Sensor](#)
- [2 Product Usage Instructions](#)
- [3 Operation](#)
- [4 Battery Condition Monitoring](#)
- [5 System block diagram](#)
- [6 Certification information](#)
- [7 Frequently Asked Questions](#)
- [8 Documents / Resources](#)
 - [8.1 References](#)



SCHRADER ELECTRONICS ETMS02 Tyre Pressure Monitoring Sensor



Product Specifications:

- Manufacturer: Schrader Electronics Ltd

- Model: ETMS02
- Type: Tyre Pressure Monitoring Sensor
- Installation: On the tyre of a vehicle
- Communication: RF transmission to receiver inside the vehicle
- Functions: Pressure measurement, battery condition monitoring

Product Usage Instructions

Installation:

1. Locate the tyre where you want to install the ETMS02 sensor.
2. Securely attach the sensor to the tyre according to the provided installation instructions.

Operation

1. The sensor will periodically measure the tyre pressure.
2. It will transmit this information via RF communication to the receiver inside the vehicle.
3. Monitor the tyre pressure readings on the receiver display.

Battery Condition Monitoring

1. The TPMS product also monitors the battery condition of the sensor.
2. Replace the sensor's battery as needed following the manufacturer's guidelines.

ETMS02 User Manual

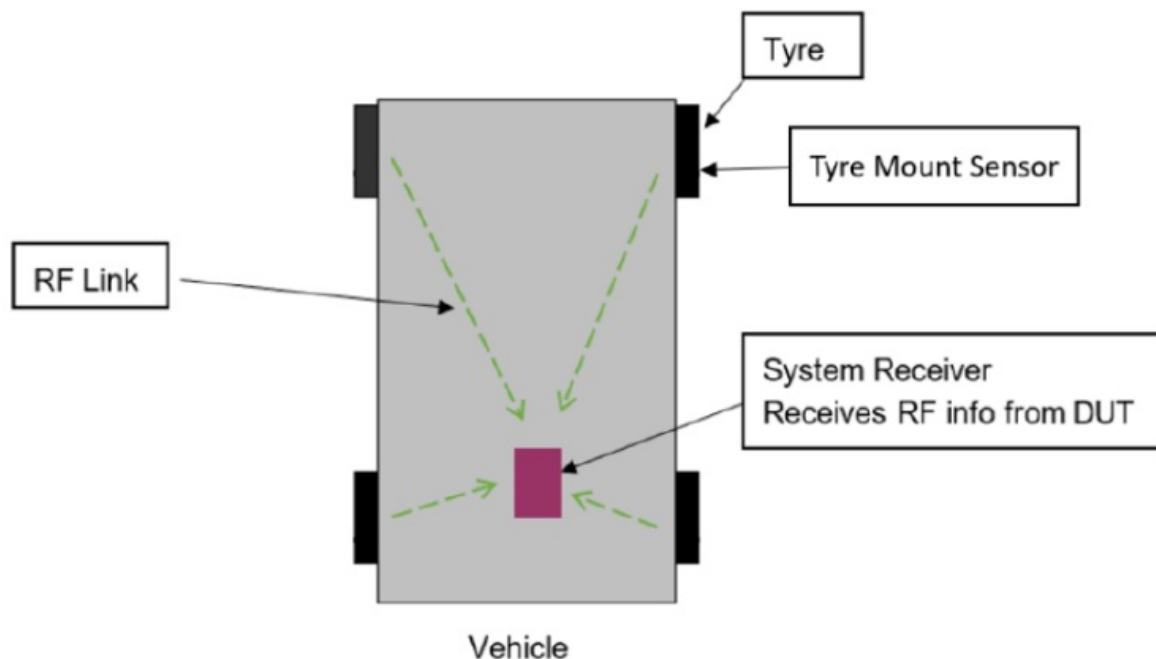
The ETMS02 is a Tyre Pressure Monitoring Sensor which is installed on the tyre of a vehicle.

The product measures periodically the pressure of the tyre and it transmits this information by RF communication to a receiver inside the vehicle. In addition, this TPMS product performs the following functions:

- Determines a temperature compensated pressure value.
- Determines any abnormal pressure variations.

- Monitors the state of the product internal battery and informs the receiver of a low battery condition.

System block diagram



Certification information

- **FCC ID:** MRXETMS02
- **IC:** 2546A-ETMS02

This device complies with Part 15 of the FCC Rules and with Licence exempt RSS standards of Industry Canada.

Operation is subject to the following two conditions:

1. This device may not cause harmful interference, and
2. This device must accept any interference received, including interference that may cause undesired operation.

Exposure to radio frequency energy. The radiated output power of this device meets the limits of FCC/ISED Canada radio frequency exposure limits. This device should be operated with a minimum separation distance of 20 cm (8 inches) between the equipment and a person's body.

This equipment complies with FCC and IC radiation exposure limits set forth for an uncontrolled environment. This equipment should be installed and operated with a minimum distance of 20 cm from any body part of nearby persons. This transmitter must not be co-located or operating in conjunction with any other antenna or transmitter.

WARNING: Changes or modifications not expressly approved by the party responsible for compliance could void the user's authority to operate the equipment. The term "IC:" before the radio certification number only signifies that Industry Canada technical specifications were met.

Frequently Asked Questions


- **Q: How do I know if the sensor battery needs replacement?**

A: The receiver inside the vehicle will typically display a low battery warning when the sensor battery needs replacement. Refer to the user manual for specific instructions on replacing the battery.

- **Q: Can the ETMS02 sensor be used on different types of vehicles?**

A: The ETMS02 sensor is designed for use on various vehicles, but it's important to ensure compatibility with your specific vehicle model. Consult the manufacturer or a professional for guidance if needed.

Documents / Resources

	<p>SCHRADER ELECTRONICS ETMS02 Tyre Pressure Monitoring Sensor [pdf] User Manual</p> <p>MRXETMS02, ETMS02 Tyre Pressure Monitoring Sensor, ETMS02, Tyre Pressure Monitoring Sensor, Pressure Monitoring Sensor, Monitoring Sensor, Sensor</p>
---	---

References

- [User Manual](#)

ETMS02, ETMS02 Tyre Pressure Monitoring Sensor, Monitoring Sensor, MRXETMS02, Pressure Monitoring Sensor, Schrader Electronics, Sensor, Tyre Pressure Monitoring Sensor

—Previous Post

SCHRADER ELECTRONICS G6GB3 TPMS Sensor User Manual

Leave a comment

Your email address will not be published. Required fields are marked *

Comment *

Name

Email

Website

☐ Save my name, email, and website in this browser for the next time I comment.

Post Comment

Search:

Search

[Manuals+](#) | [Upload](#) | [Deep Search](#) | [Privacy Policy](#) | [@manuals.plus](#) | [YouTube](#)

This website is an independent publication and is neither affiliated with nor endorsed by any of the trademark owners. The "Bluetooth®" word mark and logos are registered trademarks owned by Bluetooth SIG, Inc. The "Wi-Fi®" word mark and logos are registered trademarks owned by the Wi-Fi Alliance. Any use of these marks on this website does not imply any affiliation with or endorsement.