



SCHRACK WSA  
Series Mounting  
Instruction Door  
Switch



# SCHRACK WSA Series Mounting Instruction Door Switch Installation Guide

[Home](#) » [SCHRACK](#) » SCHRACK WSA Series Mounting Instruction Door Switch Installation Guide 

## Contents

- 1 SCHRACK WSA Series Mounting Instruction Door Switch
- 2 Product Usage Instructions:
- 3 GASKET AND BOLT ASSEMBLY
- 4 MOUNTING PLATE ASSEMBLY
- 5 GLAND PLATE ASSEMBLY
- 6 DIRECT MOUNTING
- 7 ASSEMBLY TO PROFILE CONSTRUCTION
- 8 EARTHING SYSTEM
- 9 Documents / Resources
  - 9.1 References
- 10 Related Posts



**SCHRACK WSA Series Mounting Instruction Door Switch**

**Specifications:**

- Product Name: Enclosure for Low Voltage Switch Gear Applications
- Maximum Rated Voltage: 1000V AC or 1500V DC
- Indoor Use Only

**Product Usage Instructions:****Gasket and Bolt Assembly:**

Ensure proper assembly of gasket and bolts with the following specifications:

- Maintenance torque:  $10 \pm 1$  Nm
- Includes M8x16mm, M6, M8x15mm, M4.8x9.5mm parts
- Refer to the manual for the correct number of parts based on enclosure size

**Mounting Plate Assembly:**

Follow these steps for mounting plate assembly:

- Maintenance torque:  $8 \pm 1$  Nm
- Use M8x11mm screws and mounting plate supporter

**Gland Plate Assembly**

Assemble the gland plate with the following components:

- Maintenance torque:  $5 \pm 1$  Nm
- Includes grounding claw, gasket, and M4.8x9.5mm screws

**Direct Mounting**

For direct mounting, the following parts are recommended (not included in supply):

- M8 screws, steel dowel M8, adhesive gasket

- Maintenance torque: 10 + 1 Nm

### Assembly to Profile Construction:

When assembling to profile construction, use the following parts (not included in supply):

- M8 screws, flat washer M8, adhesive gasket

### Earthing System:

Ensure proper earthing system setup for safety measures. Refer to the manual for detailed instructions.

### FAQ

- **Q: What is the maximum rated voltage for this enclosure?**

A: The maximum rated voltage is 1000V AC or 1500V DC for indoor use.

- **Q: Are mounting parts included in the supply?**

A: Some mounting parts are included in the supply, but additional recommended parts are not included.

### ARTICLE NUMBER

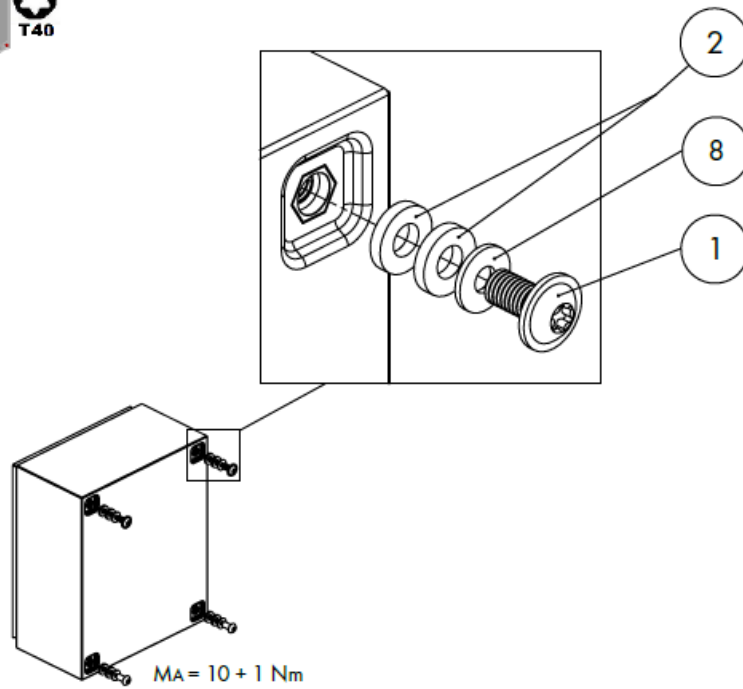
WSA3025150	WSA6050305
WSA3025210	WSA6060210
WSA3030150	WSA6060300
WSA3030210	WSA6060400
WSA3040150	WSA6080300
WSA3525150	WSA6080302
WSA4030150	WSA7050210
WSA4030210	WSA7050260
WSA4040210	WSA8040300
WSA4050210	WSA8060210
WSA4060210	WSA8060211
WSA5030210	WSA8060260

WSA5040150	WSA8060300
WSA5040210	WSA8060305
WSA5040260	WSA8060400
WSA5040300	WSA8080210
WSA5050210	WSA8080300
WSA5050300	WSA1006260
WSA6040150	WSA1006300
WSA6040210	WSA1006409
WSA6040211	WSA1008260
WSA6040260	WSA1008300
WSA6040300	WSA1008409
WSA6050150	WSA1206300
WSA6050210	WSA1206409
WSA6050260	WSA1208300
WSA6050300	—

This product is an empty enclosure for low voltage switch gear applications with maximum rated voltage 1000V AC or 1500V DC for indoor use



## GASKET AND BOLT ASSEMBLY



#### SUPPLY INCLUDES

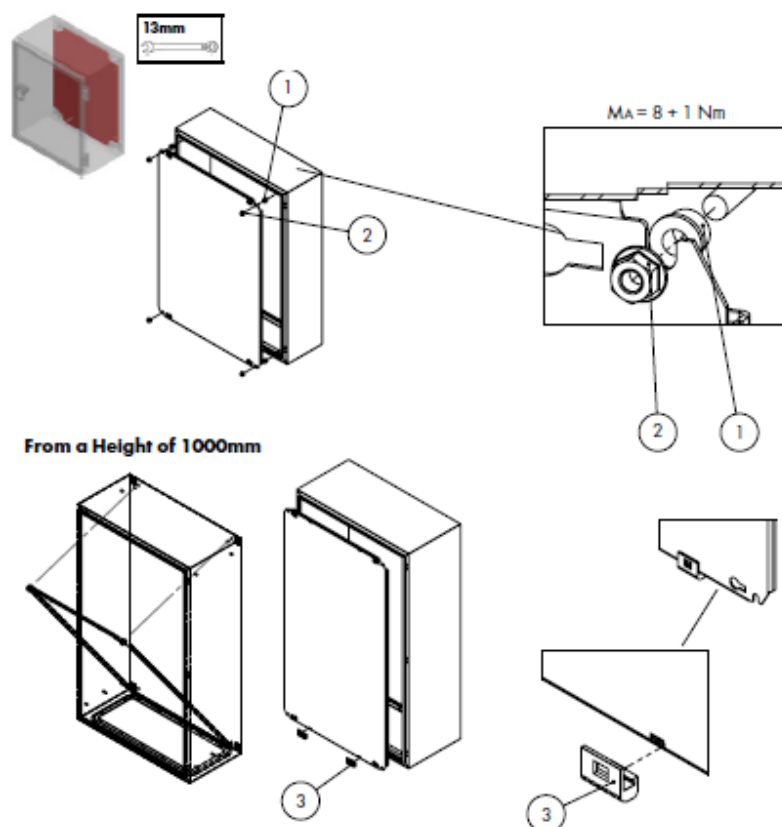
No.			Pcs.	No.			Pcs.
1		M8x16mm	4	7		M8	1
2		Gasket Ø16x8mm	8	8		Flat Washer M8	5
3		M6	S: 2 D: 4	9		Sticker	S: 3 D: 5
4		M6	S: 2 D: 4	10		Grounding Claw	S: 1 D: 2
5		M8x15mm	1	11		Double-bit Key	1
6		M4.8x9.5mm	**				



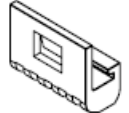
S=Single Door

D=Double Door

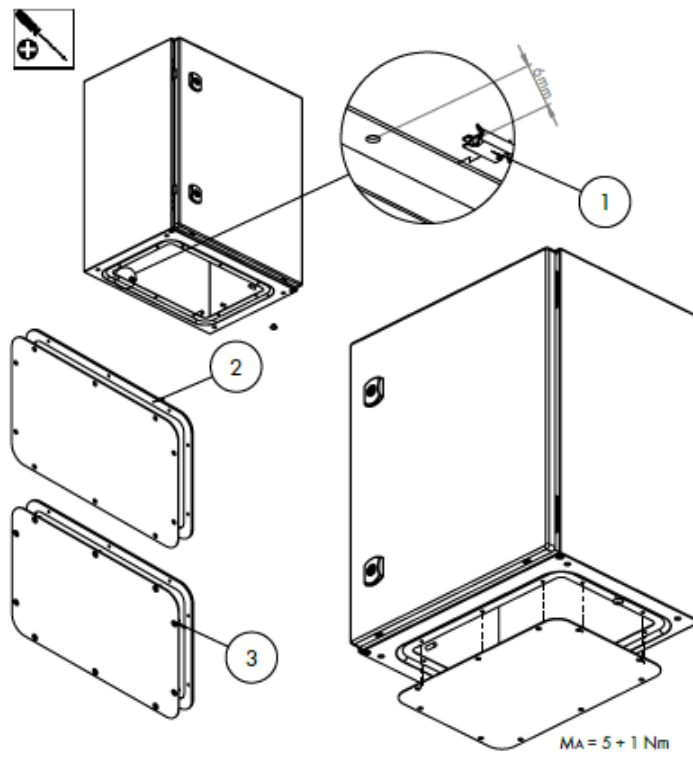
\*\*=The Number of Parts Changes According to the Enclosures Size

#### MOUNTING PLATE ASSEMBLY

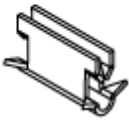
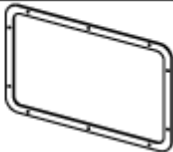



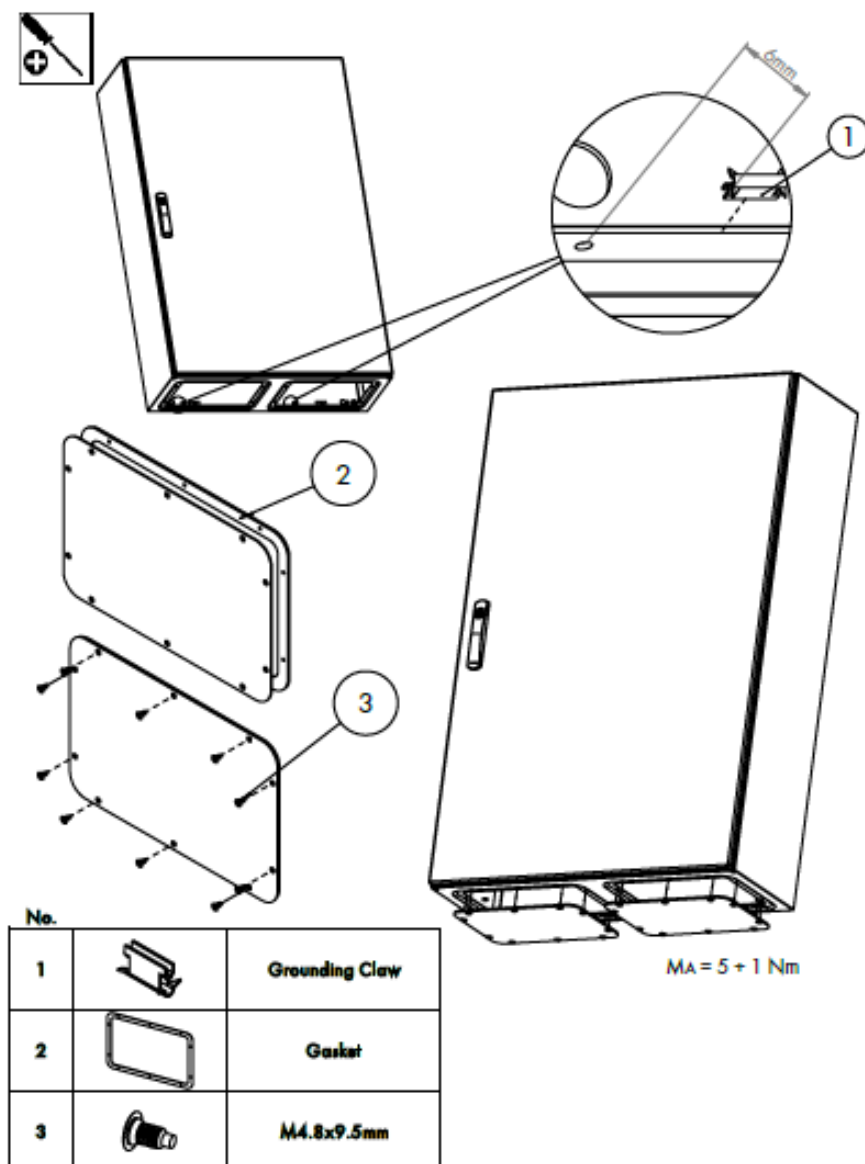
No.		
1		M8x11 mm
2		M8
3		Mounting Plate Supporter

## GLAND PLATE ASSEMBLY



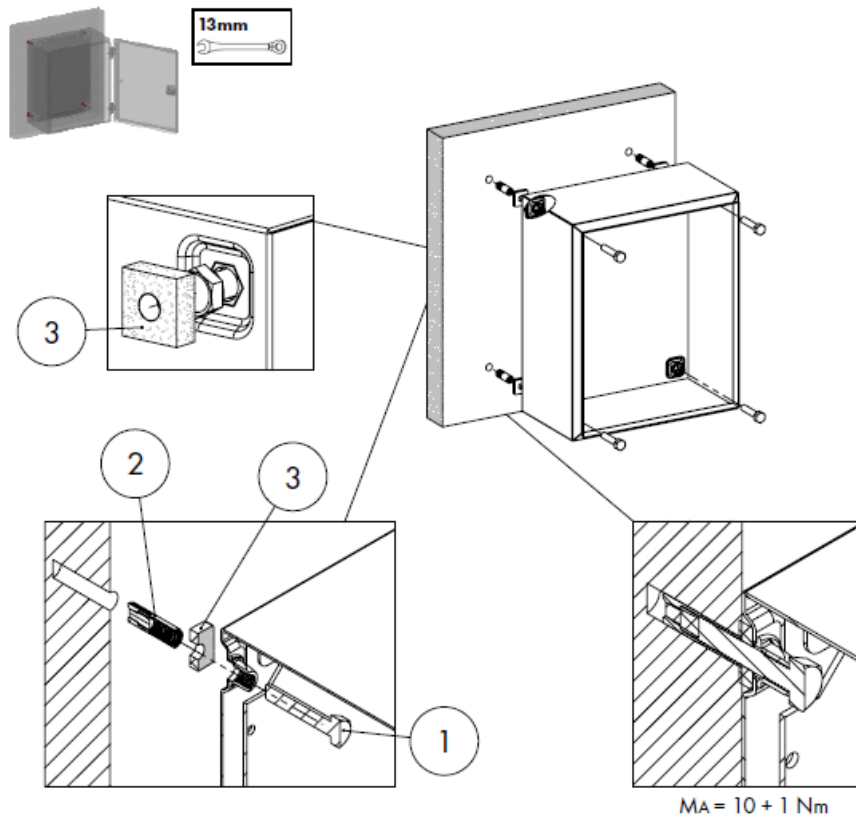
**No.**

<b>1</b>		<b>Grounding Claw</b>
<b>2</b>		<b>Gasket</b>
<b>3</b>		<b>M4.8x9.5mm</b>

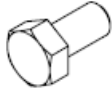

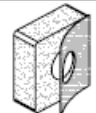


## DIRECT MOUNTING

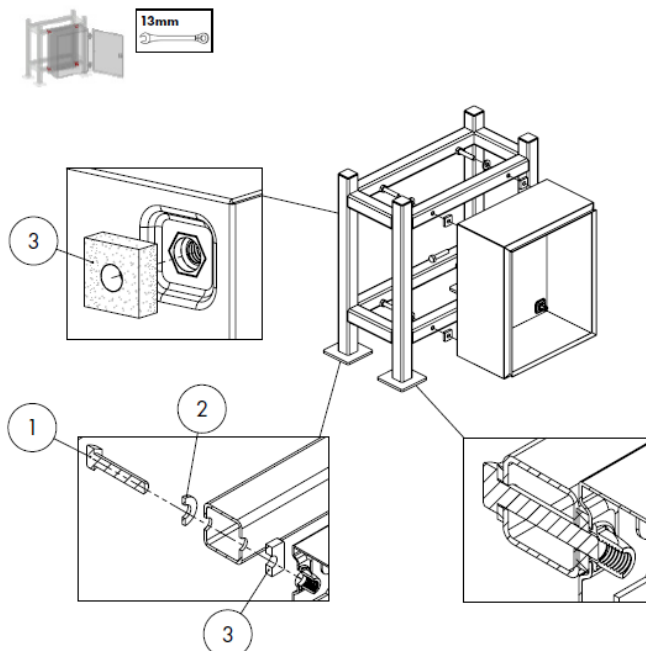




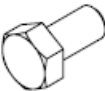

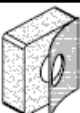
#### RECOMMENDED PARTS (Not Included in Supply!)

No.			Pcs.
1		M8	4
2		Flat Washer M8	4
3		Adhesive Gasket	4

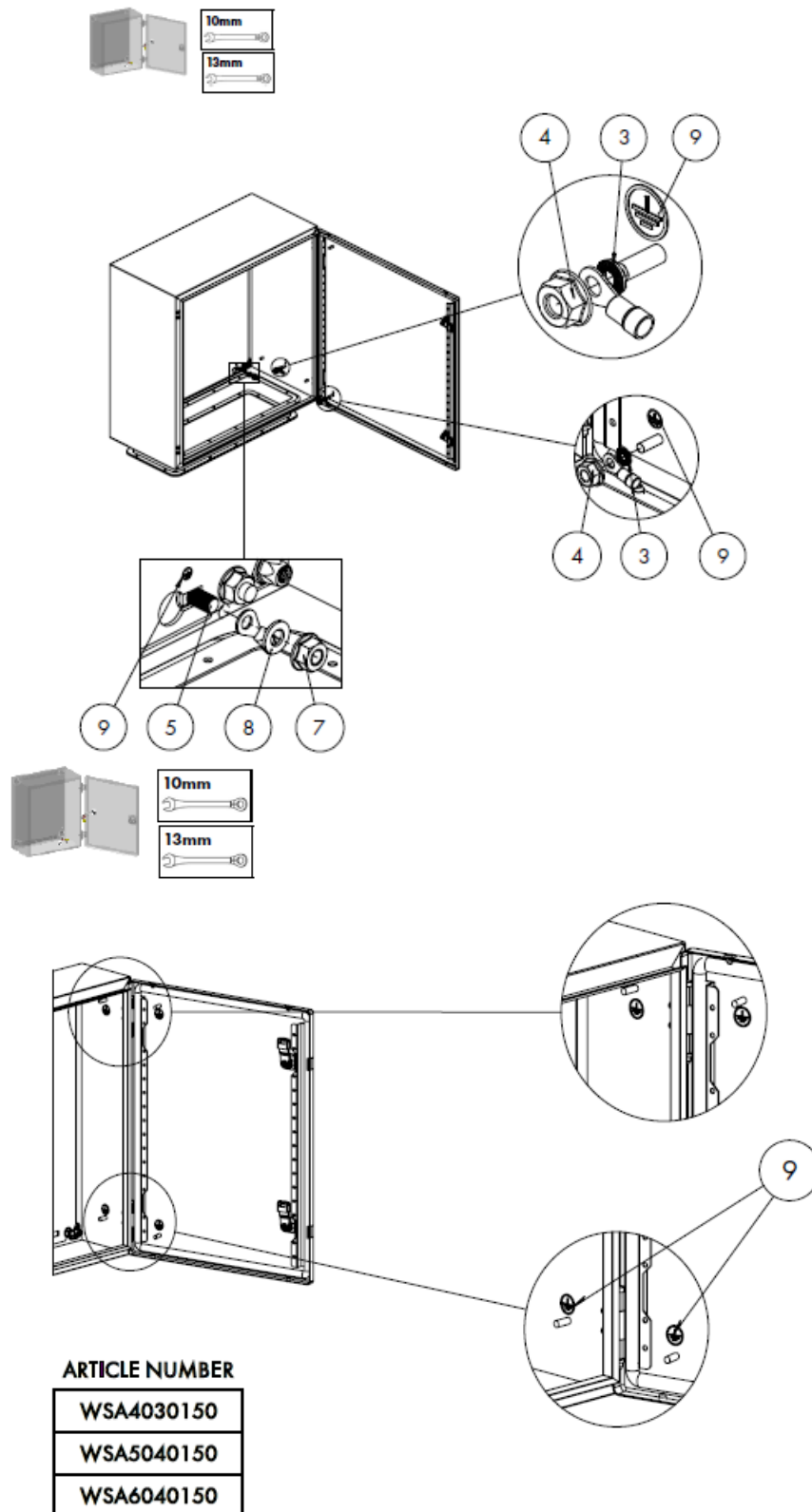
#### ASSEMBLY TO PROFILE CONSTRUCTION



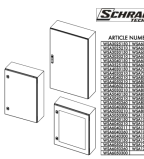
**RECOMMENDED PARTS (Not Included in Supply!)**

No.			Pcs.
1		M8	4
2		Flat Washer M8	4
3		Adhesive Gasket	4

**EARTHING SYSTEM**



## Documents / Resources

 <p>1/1</p>	<p><a href="#">SCHRACK WSA Series Mounting Instruction Door Switch</a> [pdf] Installation Guide</p> <p>WSA3025150, WSA3025210, WSA3030150, WSA3030210, WSA3040150, WSA3525150, WSA4030150, WSA4030210, WSA4040210, WSA4050210, WSA4060210, WSA5030210, WSA5040150, WSA5040210, WSA5040260, WSA5040300, WSA5050210, WSA5050300, WSA6040150, WSA6040210, WSA6040211, WSA6040260, WSA6040300, WSA6050150, WSA6050210, WSA6050260, WSA6050300, WSA6050305, WSA6060210, WSA6060300, WSA606, WSA Series Mounting Instruction Door Switch, WSA Series, Mounting Instruction Door Switch, Instruction Door Switch, Door Switch, Switch</p>
--	--

## References

-  [International](#)
- [User Manual](#)

[Manuals+](#), [Privacy Policy](#)

This website is an independent publication and is neither affiliated with nor endorsed by any of the trademark owners. The "Bluetooth®" word mark and logos are registered trademarks owned by Bluetooth SIG, Inc. The "Wi-Fi®" word mark and logos are registered trademarks owned by the Wi-Fi Alliance. Any use of these marks on this website does not imply any affiliation with or endorsement.