

Schneider
Electric

Schneider VW Series
Remote Keypad for
Altivar



Schneider VW Series Remote Keypad for Altivar Owner's Manual

[Home](#) » [Schneider](#) » Schneider VW Series Remote Keypad for Altivar Owner's Manual 

Contents

- [1 Schneider VW Series Remote Keypad for Altivar](#)
- [2 Safety Instructions](#)
- [3 Installation](#)
- [4 Documents / Resources](#)
 - [4.1 References](#)



Schneider VW Series Remote Keypad for Altivar



VW3A3301, 309, 310 → ATV71 ≥ V1.1 IE04
VW3A3320, 326, 327 → ATV61 ≥ V1.2
VW3A3312, 313, 315, 318, 319 → ATV61 ≥ V5.8IE36
VW3A3320, 326, 327 → ATV71 ≥ V5.7IE70

Safety Instructions

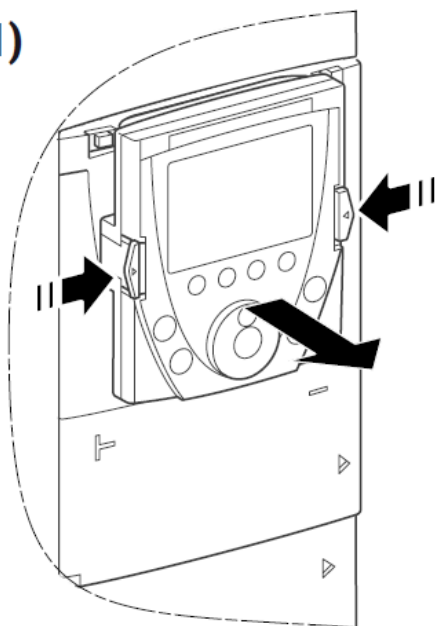
DANGER HAZARD OF ELECTRIC SHOCK, EXPLOSION, OR ARC FLASH

- Read and understand this manual and the manuals of the drive before installing this option.
- Installation must be performed by qualified personnel
- The user is responsible for compliance with all international and national electrical code requirements with respect to grounding of all equipment.
- Many parts of this drive, including the printed circuit boards, operate at the line voltage. DO NOT TOUCH. Use only electrically insulated tools.
- DO NOT touch unshielded components or terminal strip screw connections with voltage present.
- DO NOT short across terminals PA/+ and PC/- or across the DC bus capacitors.
- Before servicing the drive:
 - Disconnect all power, including external control power that may be present.
 - Place a “DO NOT TURN ON” label on all power disconnects.
 - Lock all power disconnects in the open position.
 - WAIT 15 MINUTES to allow the DC bus capacitors to discharge.
 - Measure the voltage of the DC bus between the PA/+ and PC/- terminals to ensure that the voltage is less than 42 Vdc.
 - If the DC bus capacitors do not discharge completely, contact your local Schneider Electric representative. Do not repair or operate the drive.
- Install and close all covers before applying power or starting and stopping the drive.

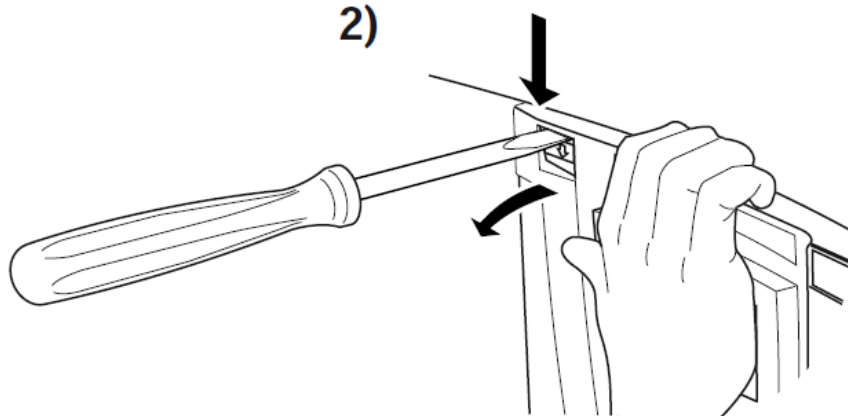
Failure to follow these instructions will result in death or serious injury.

Installation

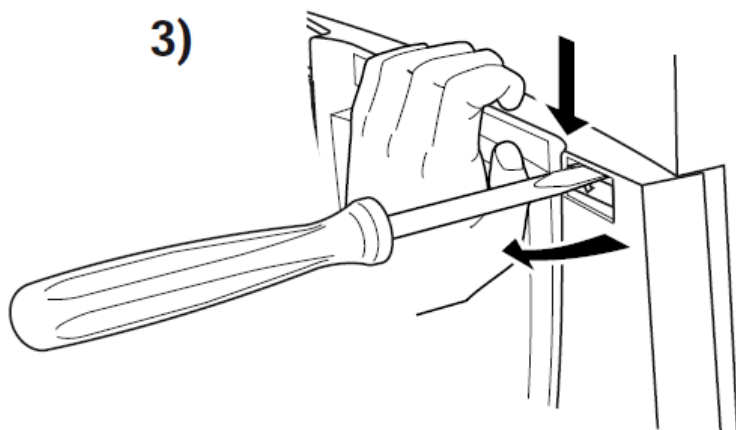
1)



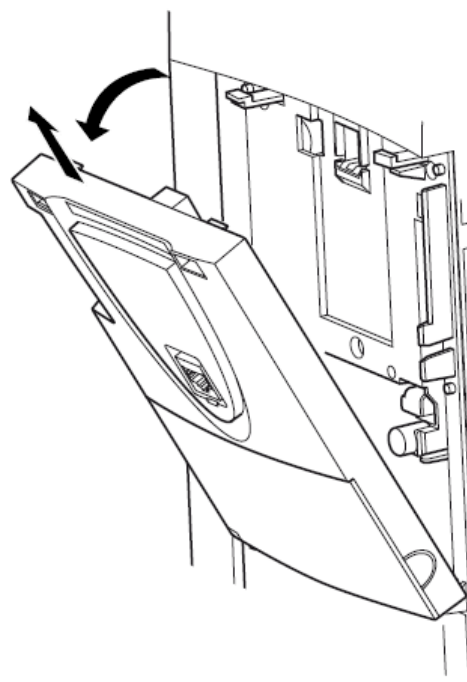
2)

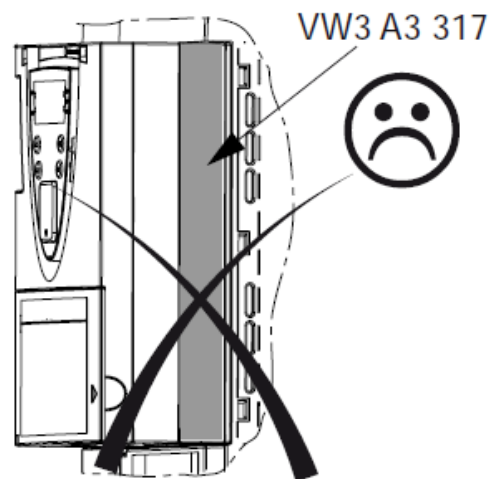
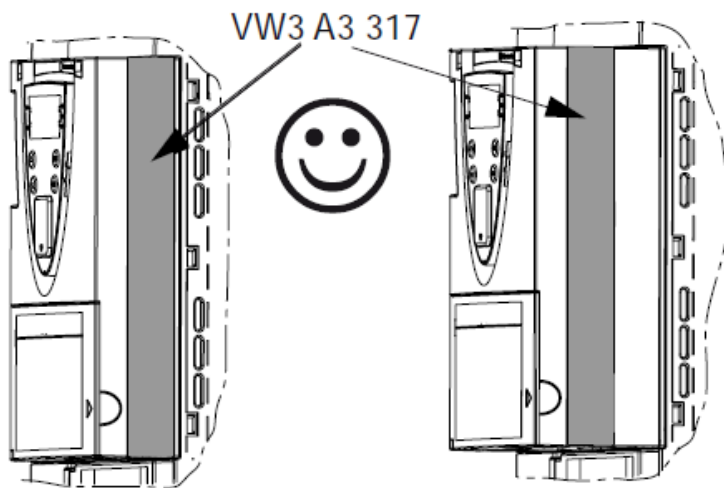
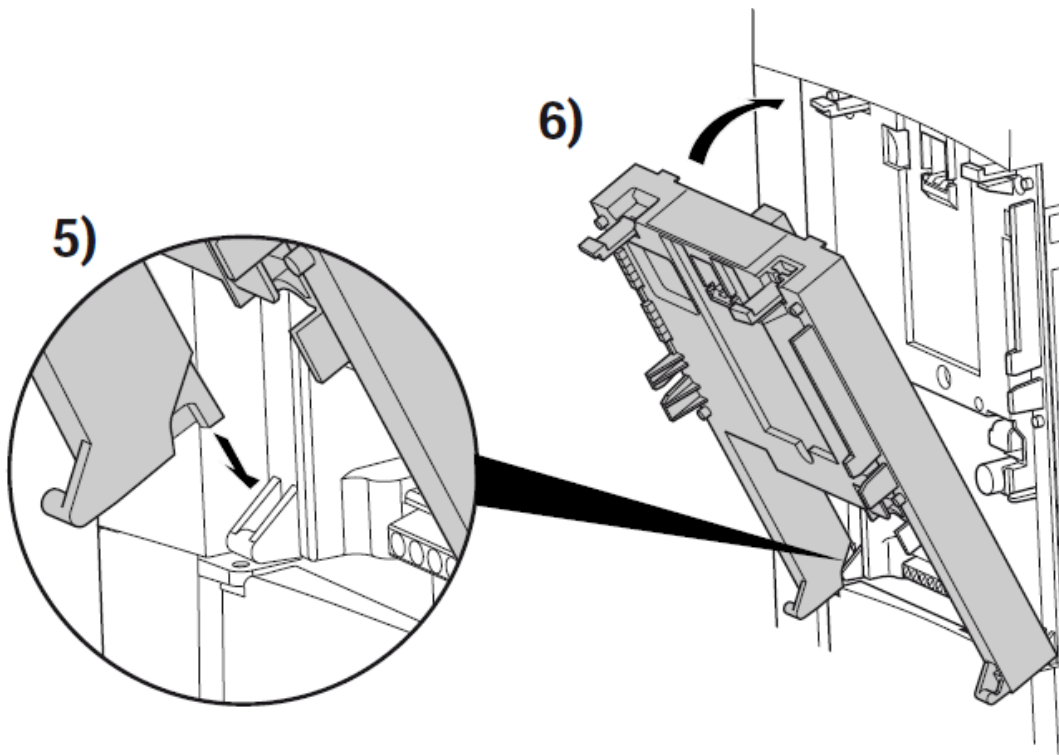


3)

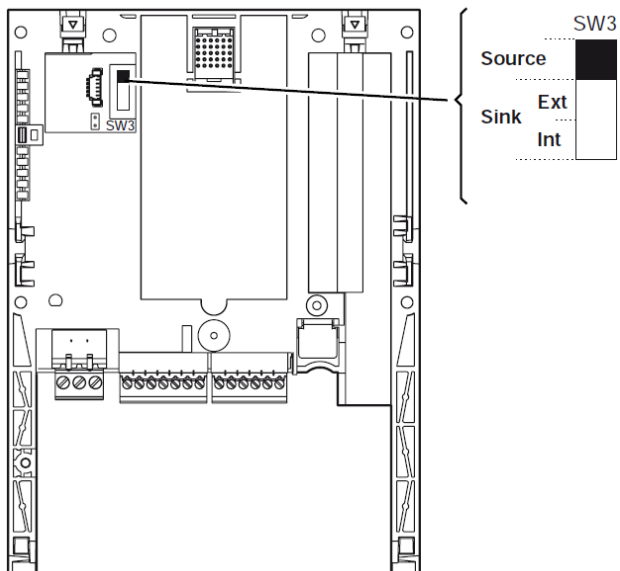


4)

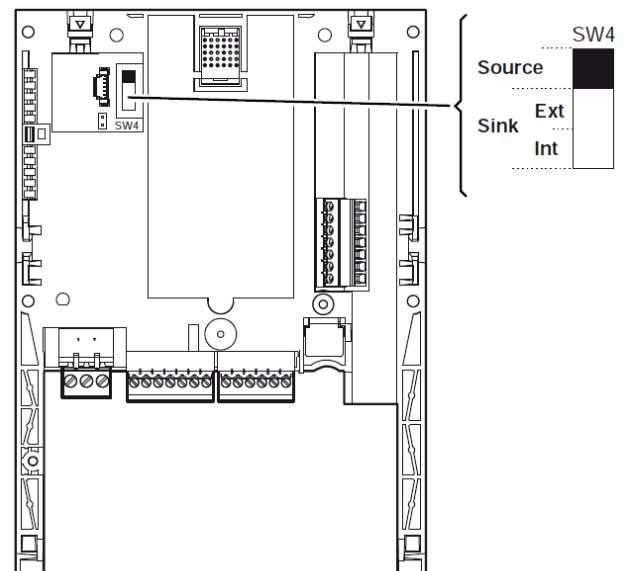


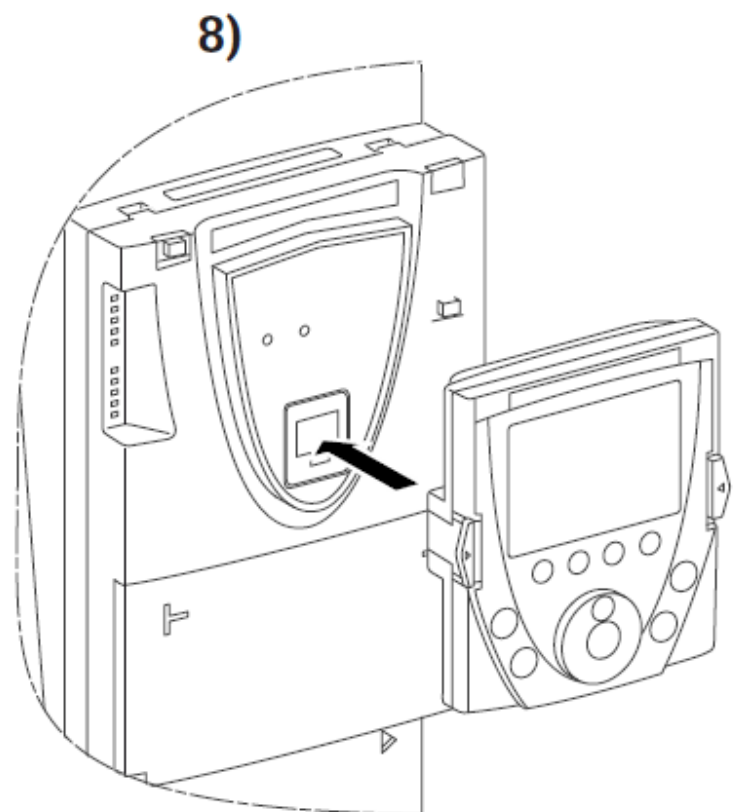
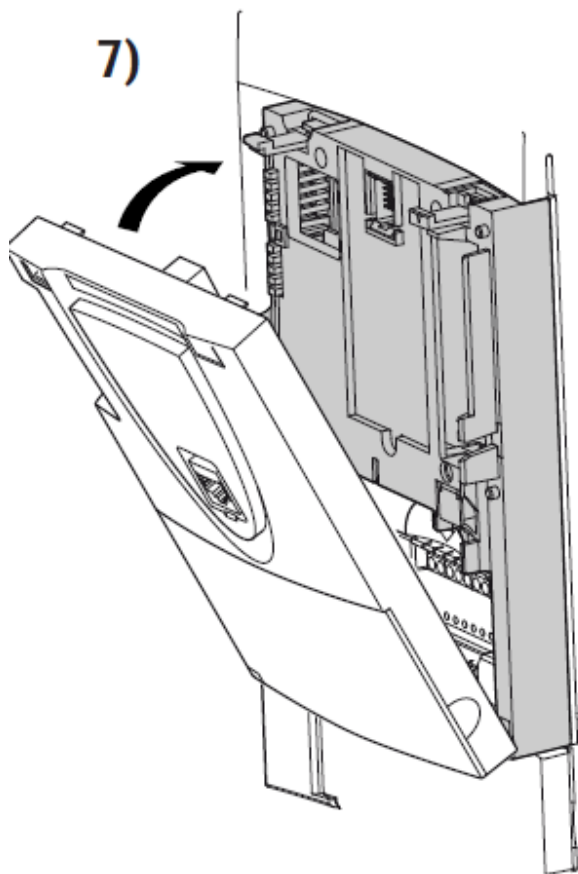


VW3 A3 201



VW3 A3 202





www.schneider-electric.com

Documents / Resources



[Schneider VW Series Remote Keypad for Altivar](#) [pdf] Owner's Manual
VW Series Remote Keypad For Altivar, VW Series, Remote Keypad For Altivar, Keypad For Altivar, For Altivar, Altivar

References

- [User Manual](#)

Manuals+. Privacy Policy

This website is an independent publication and is neither affiliated with nor endorsed by any of the trademark owners. The "Bluetooth®" word mark and logos are registered trademarks owned by Bluetooth SIG, Inc. The "Wi-Fi®" word mark and logos are registered trademarks owned by the Wi-Fi Alliance. Any use of these marks on this website does not imply any affiliation with or endorsement.