



SCHNEIDER SCMW2125GDB 25L Digital Grill Microwave Instruction Manual

[Home](#) » [Schneider](#) » **SCHNEIDER SCMW2125GDB 25L Digital Grill Microwave Instruction Manual** 

SCHNEIDER

25L DIGITAL GRILL MICROWAVE
SCMW2125GDB



INSTRUCTION MANUAL

IMPORTANT SAFETY INSTRUCTIONS READ AND SAVE FOR FUTURE REFERENCE.

Contents

| | |
|------|--|
| 1 | INSTRUCTIONS |
| 2 | Facility |
| 3 | DESCRIPTION OF YOUR PRODUCT |
| 4 | BEFORE FIRST USE |
| 5 | CONTROL PANEL |
| 6 | INSTRUCTIONS |
| 7 | MATERIALS USABLE IN THE MICROWAVE OVEN |
| 8 | TROUBLESHOOTING |
| 9 | CLEANING AND MAINTENANCE |
| 10 | TECHNICAL SPECIFICATIONS |
| 11 | Documents / Resources |
| 11.1 | References |

INSTRUCTIONS

Before using this device, please read this manual carefully and keep it for future use. If you give this device to another person, also give them this user manual.

IMPORTANT SAFETY INSTRUCTIONS READ CAREFULLY AND KEEP FOR FUTURE USES

- This device can be used by children from 8 years and above as well as by people with reduced physical, sensory or mental capacities or a lack of experience and knowledge provided that they have received supervision or instructions.

Regarding the safe use of the device and that they understand the dangers involved.

Children should not play with the device.

Cleaning and user maintenance shall not be carried out by children, unless they are over 8 years old and supervised.

Keep the appliance and its cord out of the reach of children under 8 years old.

- If the power cable is damaged, it must be replaced by the manufacturer, its aftersales service or similarly qualified persons in order to avoid a hazard.
- **CAUTION:** If the door or door seals are damaged, the microwave oven must not be operated until it has been repaired by a competent person.
- **WARNING:** It is dangerous for anyone other than a competent person to perform maintenance or repairs involving the removal of a cover that protects against exposure to microwave energy.
- **CAUTION:** Liquids and other foodstuffs should not be heated in tightly closed containers as they may explode.
- This appliance is intended for use in household and similar applications such as:
 - Kitchen areas reserved for staff in shops, offices and other professional environments;
 - Use by customers of hotels, motels and other residential type environments;
 - Bed and breakfast type environments.
- Install or position the microwave oven in strict accordance with the installation instructions provided. The minimum installation height is 85 cm.

The back of the device should be placed against a wall. Leave a minimum empty space of 30 cm above the oven and 20 cm between the oven and each wall. Refer to the "Installation" paragraph.
- Use only utensils suitable for use in microwave ovens.
- Metal containers for food and drink are not allowed during microwave cooking.
- While heating food in plastic or paper containers, keep an eye on the microwave oven because of the

possibility of ignition.

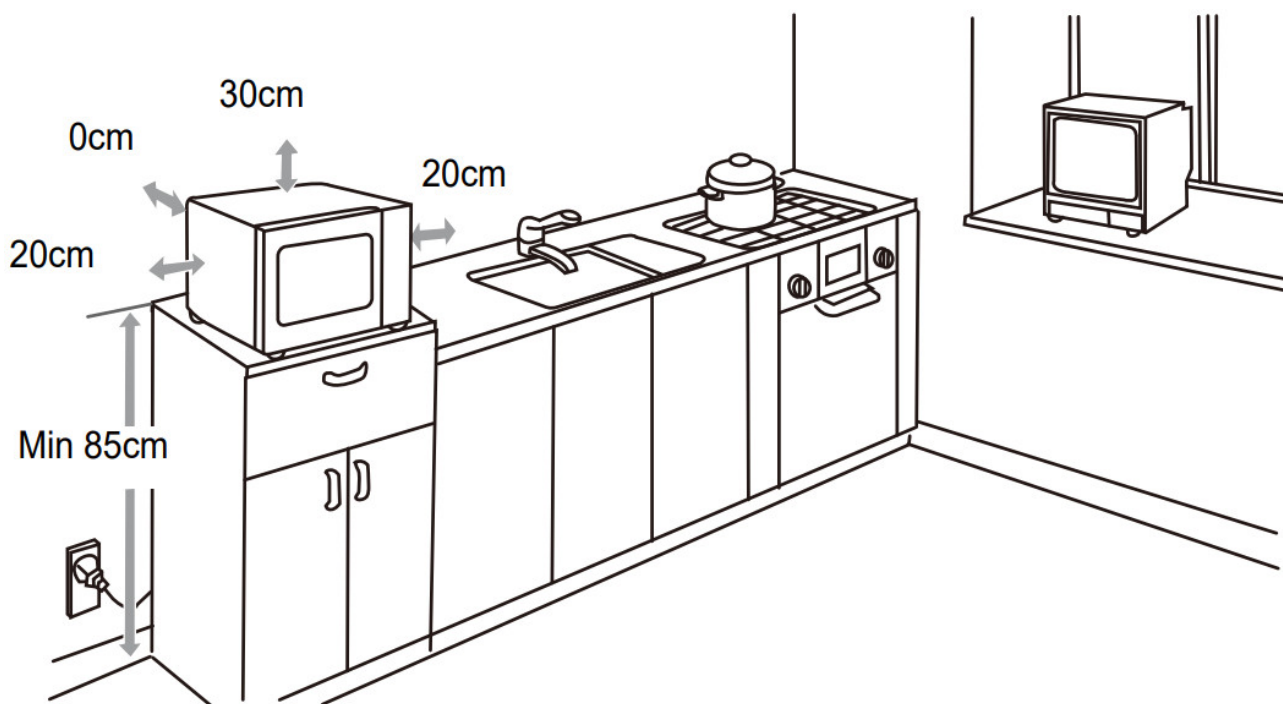
- The microwave oven is designed for heating food and drink. Drying foodstuffs or laundry and heating heating pads, wet laundry and other similar items may result in the risk of injury, ignition or fire.
- If smoke appears, turn off or unplug the appliance and keep the door closed to smother any flames.
- Heating beverages in the microwave can cause boiling liquid to spurt out suddenly. For this reason, care should be taken when handling containers.
- The contents of baby bottles and jars of baby food should be stirred or shaken and the temperature should be checked before consumption, so as to avoid burns.
- It is not recommended to heat eggs in their shells and whole hard-boiled eggs in a microwave oven as they may explode, even after cooking has finished.
- Regarding the instructions relating to cleaning, in particular of door seals, cavities and adjacent parts, refer to the paragraph below in the manual.
- It is recommended to clean the oven regularly and to remove any food deposits.
- If the device is not kept in a good state of cleanliness, its surface may deteriorate and inexorably affect the life of the device and lead to a dangerous situation.
- The appliance must not be steam cleaned.
- This microwave oven is intended to be free standing, it must not be placed in a piece of furniture.
- This device is a Group 2, Class B device. This appliance belongs to group 2 because it intentionally generates radio frequency energy to heat food or products. This device belongs to class B because it is suitable for use in residential environments and in establishments directly connected to a low-voltage power supply network supplying buildings used for domestic purposes.
- This appliance is not intended to be operated by means of an external timer or by a separate remote control system.
- **WARNING – RISK OF ELECTRICAL SHOCK !** Do not immerse the device, cord or power plug in water or any other liquid. Do not use the device with wet hands.
- Avoid overcooking food.
- Do not use the inside of the appliance to store food or containers. Do not store food (eg bread, biscuits, etc.) in the oven.
- Remove all metal twist ties and handles from paper or plastic bags/containers before placing them in the microwave.
- Do not use or store the device outdoors.
- Do not use this oven near water, in a wet basement, or near a swimming pool.
- Accessible surfaces may be heated to high temperatures when the device is in operation. Surfaces may become hot during use. Be sure to keep the power cable away from any hot surface. Do not cover any of the microwave oven vents.
- Do not let cord hang over edge of table or counter.
- Accessible parts can be heated to high temperatures when the device is in operation. Small children should be kept away.
- The device is heated to high temperature during operation. Be careful never to touch the heating elements located inside the oven.
- **Radio interference** The use of a microwave oven may cause interference which may affect the reception of your radios, televisions and similar devices. If there is interference, try to reduce or eliminate it by doing the following:

- > Clean the oven door and sealing surfaces.
- > Reorient the receiving antenna of the radio or TV.
- > Change the location of the oven relative to the receiver.
- > Move the microwave oven away from the receiver.
- > Plug in the microwave oven into another outlet so that it is not on the same circuit as the receiver.

This product is Group 2 Class B ISM equipment. Group 2 includes all ISM (Industrial, Scientific and Medical) equipment in which radio frequency energy is intentionally generated and/or used in the form of electromagnetic radiation for the materials processing and spark erosion equipment.

Facility

1. Select a horizontal surface with sufficient open space for the air inlet and/or outlet vents.



- (1) The minimum installation height is 85 cm.
 - (2) The back of the device should be placed against a wall. Leave a minimum empty space of 30 cm above the oven and 20 cm between the oven and each wall.
 - (3) Do not remove the feet located under the microwave oven.
 - (4) Blocking the air inlet and/or outlet vents may damage the oven.
 - (5) Keep the microwave oven as far away from televisions and radios as possible. The use of a microwave oven may cause interference affecting the reception of your radios or televisions.
2. Plug your oven into an electrical wall outlet. Make sure that the voltage and frequency of the current it supplies are identical to those indicated on the nameplate of the appliance.

WARNING: Do not install the oven above a cooktop or other heat-producing appliance. If the oven is installed near or above a heat source, it could be damaged and will void its warranty.

IMPORTANT

It is forbidden to replace the power cable yourself. If damaged, it must be repaired by the local distributor's after-sales service, by the manufacturer or by a qualified person.

If the device has been dropped, please consult a qualified technician to check it before using it again. Internal damage could lead to accidents.

For any type of problems or repairs, please contact the after-sales service of the local distributor, the manufacturer or a qualified person in order to prevent any risk of danger.

Disposal and environmental responsibility

In order to be respectful of the environment, we encourage you to dispose of this device properly. You can contact local authorities or recycling centers for more information.

Read the instructions carefully before use

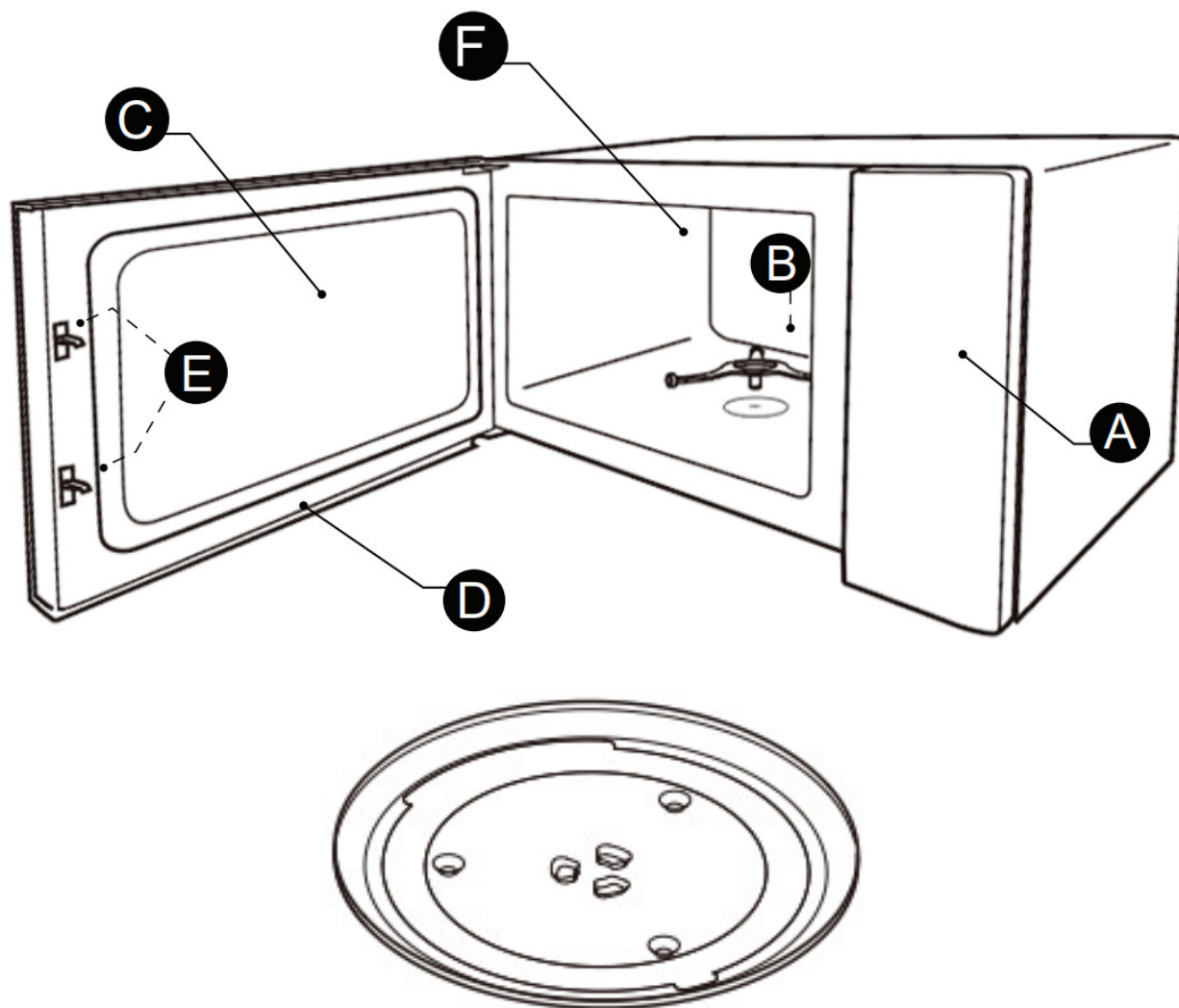
This product complies with the requirements of Directive 2014/35/EU (which replaces Directive 73/23/EEC amended by Directive 93/68/EEC) and 2014/30/EU (replaces Directive 89/336/EEC).

DESCRIPTION OF YOUR PRODUCT

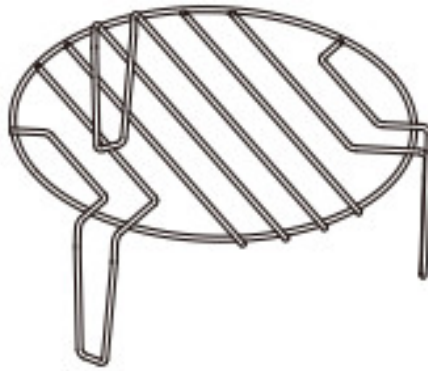
Names of oven parts and accessories

Remove the oven and all parts from the box and inside the oven. Your oven comes with the following items:

- A) Control panel
- B) Axis of the turntable
- C) Observation window
- D) Door
- E) Safety interlock system
- F) Microwave oven cavity



Glass tray (can be used in microwave function and must be placed on the axis of the turntable)

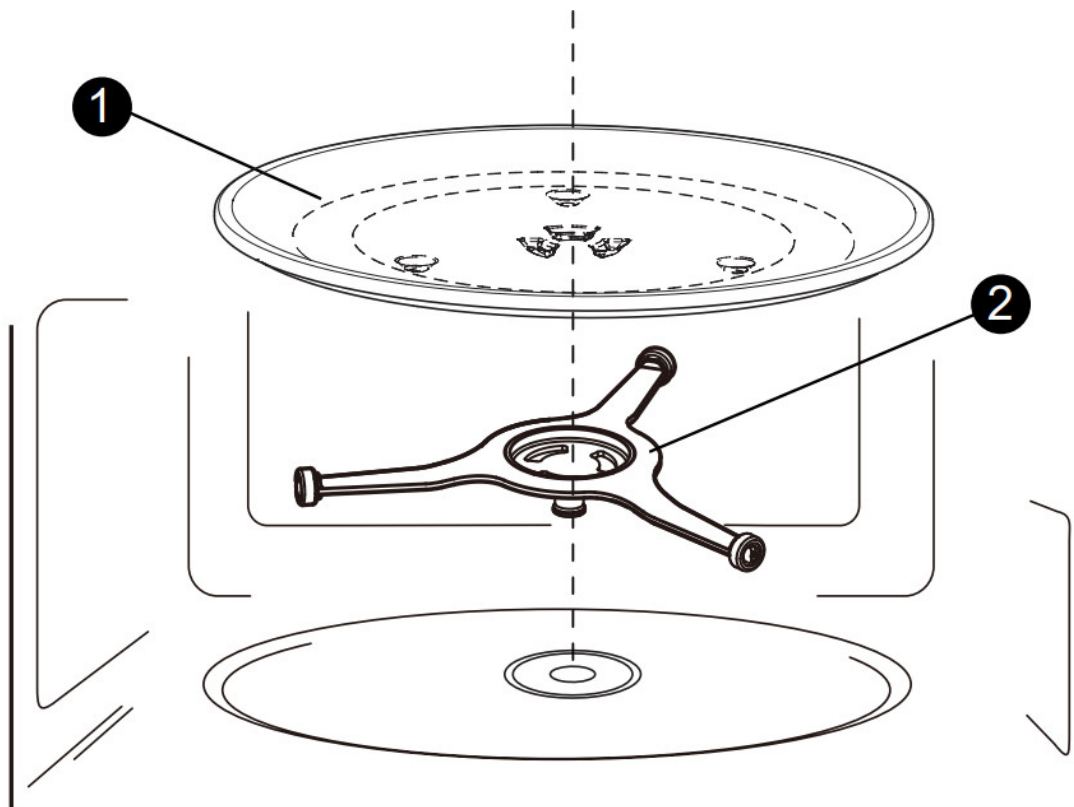


Cooking grid (cannot be use din microwave function and must be placed on the glass tray)



Turntable axis

- a. Never place it upside down on the glass top. Make sure that the rotation of the glass plate is not hindered.
- b. The glass top and the axis of the turntable should always be installed in the microwave oven being used.
- c. Food and food containers should always be placed on the glass tray for cooking.
- d. If the glass turntable cracks or breaks, contact your nearest authorized service center.



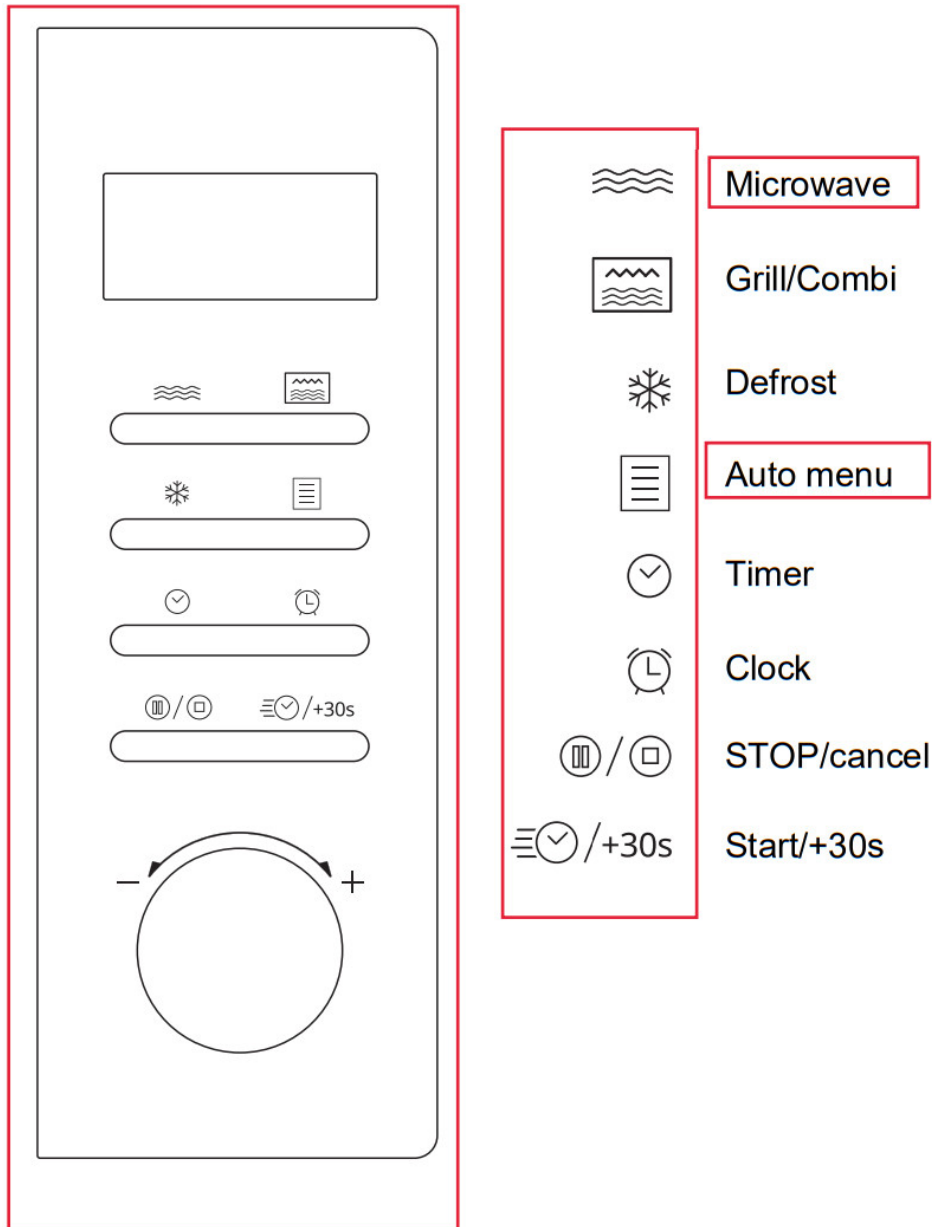
- 1) Glass top
- 2) Turntable axis

BEFORE FIRST USE

Remove all accessories and packing materials. Examine the microwave oven and make sure there are no damages such as: broken and dented door. Do not install the oven if it is damaged.

Cabinet: Remove any protective film found on the surface of the microwave oven cabinet. Do not remove the light brown mica cover that is attached to the oven cavity to protect the magnetron.

CONTROL PANEL



INSTRUCTIONS

1. Clock setting

1. Press "Clock" once then "00:00" will be displayed.
2. Turn the knob to adjust the hour digits. The time must be between 0 and 23.
3. Press "Clock" to confirm.
4. Turn the knob to adjust the minute digits. The time must be between 0 and 59.
5. Press "Clock" to confirm. The clock is set.

Remarks:

1. After step 4, if the "Clock" button is not pressed or there is no operation for 1 minute, the setting is invalid.
2. To reset the clock, please repeat steps 1-5.
3. If the clock is not set, it will not run when powered.

2. Microwave cooking

- 5 power levels are available.

| | | | | | |
|--------------|------|-----|-----|-----|-----|
| Energy level | 100% | 80% | 50% | 30% | 10% |
| Display | P100 | P80 | P50 | P30 | P10 |

1. Press “Microwave”, then “P100” will be displayed.
2. Press “Microwave” repeatedly or turn the knob to adjust the power level.
3. Press “Start/+30s” to confirm.
4. Turn the knob to adjust the cooking time.
5. Press “ Start/+30s ” to start cooking.

3. Setting the kitchen timer

1. Press “Timer” once, then “00:00” will be displayed.
2. Turn the knob to set the desired time. The maximum time value is “95:00”.
3. Press “Start/+30s” to confirm. The timer starts counting down.

4. Grill cooking

1. Press “Grill/Combi” then “G-1” will be displayed.
2. Press “Start/+30s” to confirm.
3. Turn the knob to set the cooking time. The maximum time value is “95:00”.
4. Press “ Start/+30s ” to start cooking.

5. Combined cooking

1. Press “Grill/Combi once, then “G-1” will be displayed. Press “Grill/Combi”. repeatedly to choose the power you want, and “C-1”, “C-2” will display in order.
2. Press “ Start/+30s ” to confirm.
3. Turn the knob to set the cooking time. The maximum time value is “95:00”.
4. Press “ Start/+30s ” to start cooking.

Note: Combination Instructions

| Function | Display | Microwave oven Powerful | Grill power |
|-------------|---------|----------------------------|-------------|
| Combined. 1 | C-1 | 55% | 45% |
| Combined. 2 | C-2 | 36% | 64% |

6. Defrost by weight

1. Press “Defrost” once then the display will show “dEF1”.
2. Turn the knob to adjust the food weight. The weight range is from 100 to 2000g.
3. Press “Start/+30s” to start defrosting.
4. When defrosting is complete, the timer will sound five times.

7. Defrost by time

1. Press “Defrost” twice then the display will show “dEF2”.
2. Turn the knob to set the desired defrosting time. The time range is 0:0095:00.
3. Press “Start/+30s” to start defrosting.
4. When defrosting is complete, the timer will sound five times.
8. Multi-stage cooking

Remarks:

1. Two cooking stages can be set in multi-stage cooking.
2. If you set the defrost function, it will work automatically in the first stage.
3. Kitchen timer, auto menu and quick cook cannot be set as one of the multi-stages.
4. You can press "Start/+30s" to increase the cooking time during multistage cooking.

Example: defrost food for 5 minutes, then cook at 80% microwave power for 7 minutes

1. Press "Defrost" twice then the display will show "dEF2".
2. Turn the knob to set the desired defrosting time of 5 minutes.
3. Press "Microwave", then "P100" will be displayed.
4. Turn the knob to set the power level to P80.
5. Turn the knob to set the cooking time of 7 minutes.
6. Press "Start/+30s" to start cooking.

9. Quick cooking

1. In standby state, press "Start/+30s" to cook food with 100% power level for 30 seconds. Each press of the same key can increase by 30 seconds, and the maximum time value is 95 minutes.
2. In standby state, turn the knob to the left to set a cooking time with 100% power. Then press "Start/+30s" to start cooking.

10. Lock function for children

You can use this function to prevent children from accidentally turning on the oven. To activate the lock:

In standby state, press and hold "STOP/Cancel" for three seconds. A long beep sounds and the lock icon is displayed.

To deactivate the lock:

In locked state, press and hold "STOP/Cancel" for three seconds. A long beep will sound.

8. Query function

1. If the clock has been set, the current time will be displayed for three seconds by pressing "Clock" in the cooking state.
2. In microwave cooking, press "Microwave" to request the power level. In grill and combination cooking, press "Grill/Combi" to request the power level.

9. Automatic menu

1. Press "Auto Menu" once, then "A-1" will be displayed.
2. Press "Auto Menu" repeatedly or turn the knob to choose the menu you need. 8 automatic menus are available.
3. Press "Start/+30s" to confirm.
4. Turn the knob to adjust the food weight.
5. Press "Start/+30s" to start cooking.

THE MENU TABLE:

| Menu | Weight | Display |
|-----------------|-----------------------|---------|
| A-1 Auto Reheat | 200g | 200 |
| | 400g | 400 |
| A-2 Meat | 250g | 250 |
| | 350g | 350 |
| | 450g | 450 |
| A-3 Vegetables | 200g | 200 |
| | 300g | 300 |
| | 400g | 400 |
| A-4 Pasta | 50g (450q cold water) | 50 |
| | 100g(800g cold water) | 100 |
| A-5 Potato | 1 (about 230g) | 1 |
| | 2 | 2 |
| | 3 | 3 |
| A-6 Fish | 250g | 250 |
| | 350g | 350 |
| | 450g | 450 |
| A-7 Beverage | 1(120m1) | 1 |
| | 2(240m1) | 2 |
| | 3(360m1) | 3 |
| A-8 Popcorn | 50g | 50 |
| | 100g | 100 |

MATERIALS USABLE IN THE MICROWAVE OVEN

| Utensils | Remarks |
|-----------------------|--|
| Gratin dish | Follow the manufacturer's instructions. The bottom of the gratin dish must be at least 3/16 inch (5 mm) above the turntable. Improper use can cause the turntable to break. |
| Dishes | Microwave safe only. It is necessary to follow the manufacturer's instructions because baking can crack or chip the dishes. |
| Glass jars | Always remove the cover. Use this type of container to heat food. |
| Glassware | Use oven glassware that is heat resistant only. Make sure there is no metal trim. Do not use cracked or chipped dishes. |
| Cooking bags | Follow the manufacturer's instructions. Do not close with a metal fastener. Make slits to allow steam to escape. |
| Paper plates and cups | Use only for short term cooking/reheating. Do not leave the oven unattended while cooking. |
| Pastry paper | Use it to cover food to heat it up and absorb fat. Use with caution for short term cooking only. |
| Parchment paper | Use to prevent splattering or for steaming. |
| Plastic | Microwave safe only. Follow the manufacturer's instructions. Must be labeled "Microwave Safe". Some plastic containers soften because the food inside becomes hot. Hermetically sealed plastic bags should be slit, punctured or vented according to package instructions. |
| Plastic wrap | Microwave safe only. Use it to cover food while cooking to retain moisture. Do not let the plastic wrap touch the food. |
| Thermometers | Microwave safe only (meat thermometer and sugar thermometer). |
| Wax paper | Use as a blanket to prevent splashing and retain moisture. |

| Utensils | Remarks |
|-------------------------------|--|
| Aluminum tray | May cause an electric arc. Place food on a microwave-safe plate. |
| Food carton with metal handle | May cause an electric arc. Place food on a microwave-safe plate. |
| Metal or metal utensils. | The metal protects the food from the power of the microwaves. It can cause an electric arc |
| Metal fasteners | May cause electrical arcing and cause a fire in the microwave oven. |
| Paper bags | May cause fire in microwave oven. |
| Plastic foam | Plastic foam can melt or contaminate the liquid inside when exposed to high temperatures. |
| Wood | Wood will dry out when used in the microwave oven and may split or crack. |

TROUBLESHOOTING

| Normal | |
|--|---|
| The microwave oven is causing interference. | It is likely that the microwave oven in operation could disturb the reception of your radios and televisions. This is a phenomenon found with other small appliances, such as blenders, vacuum cleaners and fans. |
| Low microwave oven light. | In low power mode, it is normal for microwave cooking to be slower. |
| Steam builds up and hot air comes out of the ducts. | During cooking, food may give off steam. But steam can accumulate on cold surfaces such as the oven door. |
| The oven was accidentally turned on with no food inside. | It is forbidden to operate the oven without food inside. It's very dangerous. |

| Problem | Possible cause | The solution |
|----------------------------|---|--|
| The oven cannot start. | (1)The power cable is not properly connected. | Wait 10 seconds then plug it back in. |
| | (2)Fuse blown or circuit breaker activated. | Replace the fuse or turn the circuit breaker back on (repairs should be done by a professional company). |
| | (3)There is a problem with the power outlet. | Test it with other devices. |
| The oven does not heat up. | (4)The door is not closed. | Safely close the door. |

CLEANING AND MAINTENANCE

Be sure to unplug the device from the power supply.

1. After use, clean the oven cavity with a damp cloth.
2. Clean the accessories with soapy water.
3. The door frame, gasket and faces of the microwave oven should be cleaned thoroughly with a damp cloth when dirty.
4. Do not use abrasive cleaners or hard metal scrapers to clean the oven glass door, as they will scratch the glass surface and could break it.
5. Cleaning tip – To make it easier to clean the interior walls of the oven which may come into contact with cooked food: place half a lemon in a bowl, add 300ml of water and heat in the microwave at 100% power for 10 minutes. Wipe the oven with a dry cloth.

TECHNICAL SPECIFICATIONS

| | |
|---------------------------------|-----------------|
| Reference: | SCMW2125GDB |
| Nominal voltage : | 230V~50Hz |
| Rated input power (microwave): | 1450W |
| Rated output power (microwave): | 900W |
| Rated input power (grill): | 1000W |
| Oven capacity: | 24.6L |
| Turntable diameter: | 288 millimeters |
| External dimensions: | 469*377*280mm |
| Net weight : | About 12.5kg |



If this logo appears on the device, it means that it must be disposed of in accordance with Directive 2012/19/EU on electronic and electrical equipment (WEEE).

All hazardous substances contained in electrical and electronic equipment can have adverse effects on the environment and human health.

Consequently, when this appliance is out of use, it must not be disposed of with unsorted municipal waste.

As the end consumer, your role is essential in ensuring the reuse, recycling or any other form of value creation for this appliance. You have several collection and recovery systems set up by your local authorities (recycling centers) and distributors.

You have an obligation to use these systems.

GUARANTEE:

The warranty does not cover product wear parts, problems or damage resulting from:

1. Superficial damage due to normal wear of the product
2. Defects or deterioration due to contact of the product with liquids and due to corrosion caused by rust or the presence of insects;
3. Any unauthorized incident, abuse, misuse, modification, dismantling, repair;
4. Any improper maintenance, use not in accordance with the product instructions or connection to an incorrect voltage;
5. Any use of accessories not supplied or approved by the manufacturer

The warranty will be void if the nameplate and/or serial number of the product is removed.

SCHNEIDER

This product is imported by: SCHNEIDER CONSUMER GROUP
12 rue Jules Ferry – 93110 Rosy-sous-Bois, FRANCE



MICRO-ONDES GRILL DIGITAL 25L
25L DIGITAL GRILL MICROWAVE
25L DIGITAL GRILL MICROWAVE
25L DIGITALE GRILL MAGNETRON
MICROONDAS GRILL DIGITAL 25L



MANUEL D'INSTRUCTIONS • INSTRUCTION MANUAL
BEDIENUNGSANLEITUNG • HANDBOOK
MANUAL DE INSTRUCCIONES
INSTRUKCIJE KORIŠĆENJA
LÉSEGTUDOMÁNY ÉS HASZNÁLATI UTASÍTÁSOK
POMIŠĆENIA I UŻYCIOWANIA INSTRUKCJE
IMPORTANT: ALWAYS INSTRUCTIONS READ AND SAVE IT FOR FUTURE REFERENCE
WZROZNEK SŁOŻENIA I ZBIERANIA LEŻYĆ WŁAŚCIWIE
BEWAARDE VULWASINGEN EN INSTRUCTIES LEES EN BEDIEN WILDER
SICHERHEID EN GEZONDHEID
INSTRUKCIJE I UPOWZAGNIJAJĄCE INSTRUKCJE
POMIŠĆENIA I UŻYCIOWANIA INSTRUKCJE

[SCHNEIDER SCMW2125GDB 25L Digital Grill Microwave](#) [pdf] Instruction Manual
SCMW2125GDB, SCMW2125GDB 25L Digital Grill Microwave, 25L Digital Grill Microwave, Di
gital Grill Microwave, Grill Microwave, Microwave

SCMW2125GDB, SCMW2125GDB 25L Digital Grill Microwave, 25L Digital Grill Microwave, Digital Grill Microwave, Grill Microwave, Microwave

References

- User Manual

[Manuals+](#), [Privacy Policy](#)