

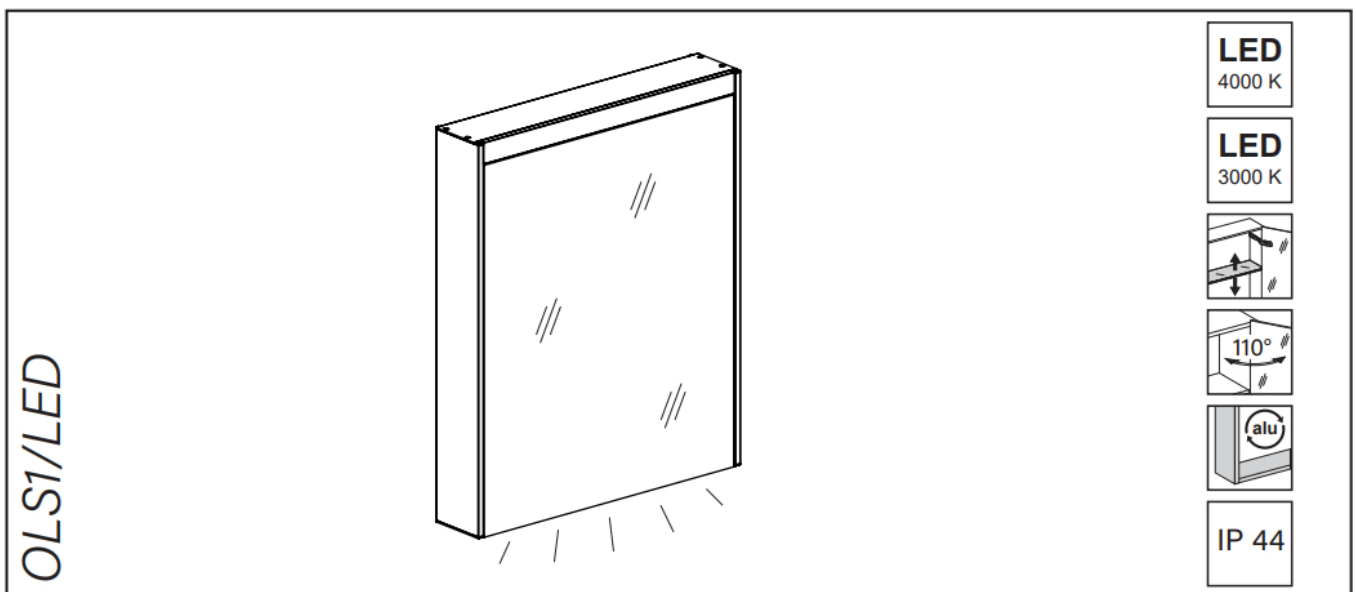


## SCHNEIDER OBJECT Line Superior LED OBJECT Line Superior LED Mirror Cabinets Instruction Manual

[Home](#) » [Schneider](#) » SCHNEIDER OBJECT Line Superior LED OBJECT Line Superior LED Mirror Cabinets Instruction Manual 






### OBJECT Line Superior LED OBJECT Line Superior LED Mirror Cabinets Instruction Manual

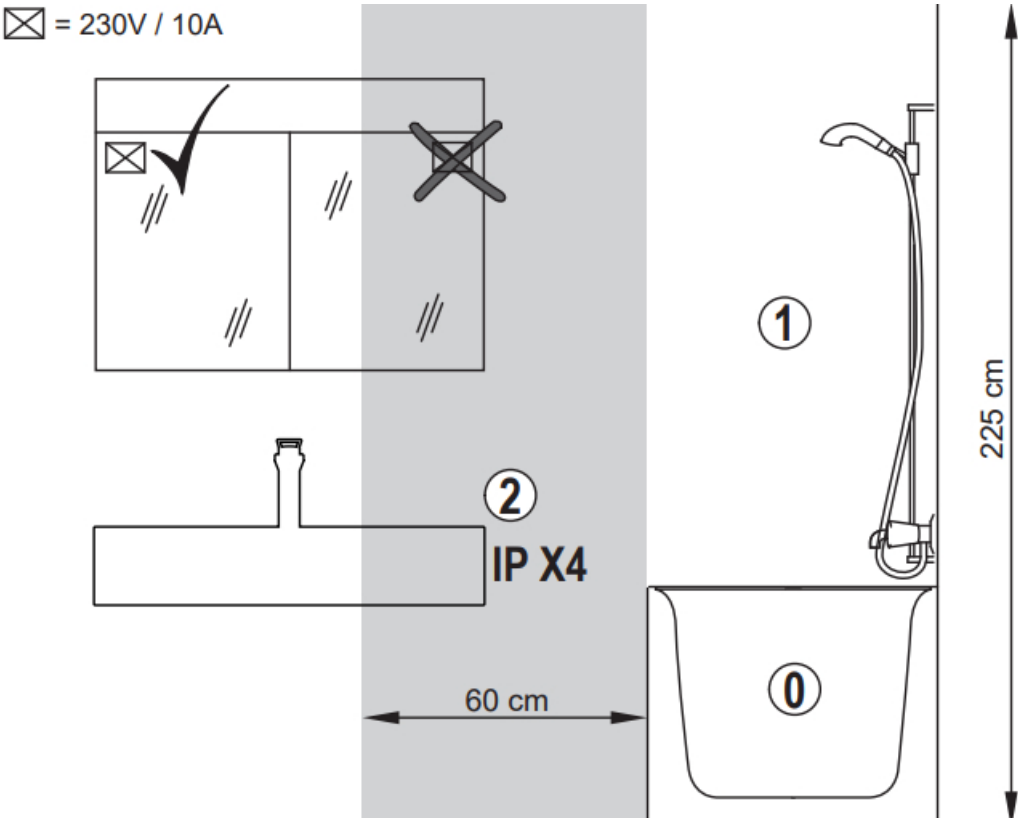


Electric installation work may only be carried out by approved specialists according to the local regulations. Liability will only be accepted by us when our products are installed by qualified engineers. The light sources incorporated in this product should only be replaced by the manufacturer, or by another similarly well-qualified person.

Rooms with bath or shower have to be protected with residual-current-operated protective device (RCD) FI (RCD) I  $\Delta n = 30\text{mA}$ .

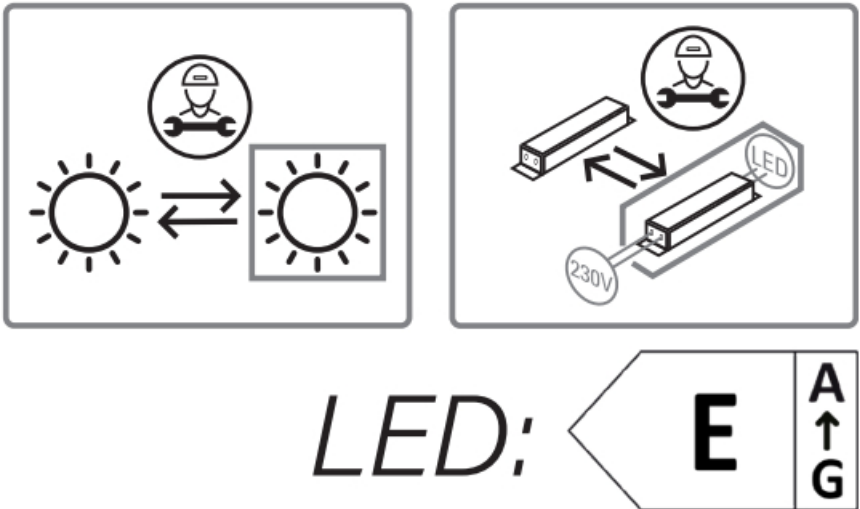
Volume 2 min. protection IP X4. Volume 2 no socket admitted.

	The product is controlled after current guidelines.
	The product must be disposed of separately from normal household waste.
	Indoor installation only



The light sources and electronic components are replaceable by a qualified person in accordance with Article 4 of EU Regulation 2019/2020.

This mirror cabinet contains light sources with the energy efficiency class:




Scope of delivery	50, 60, 70, 80, 90, 100, 120/2 cm	100/3, 120/3, 150/3 cm
Mirror cabinet	1	1
Glass shelf	2	4
Suspension rail	1	1
Set of screws	1	1

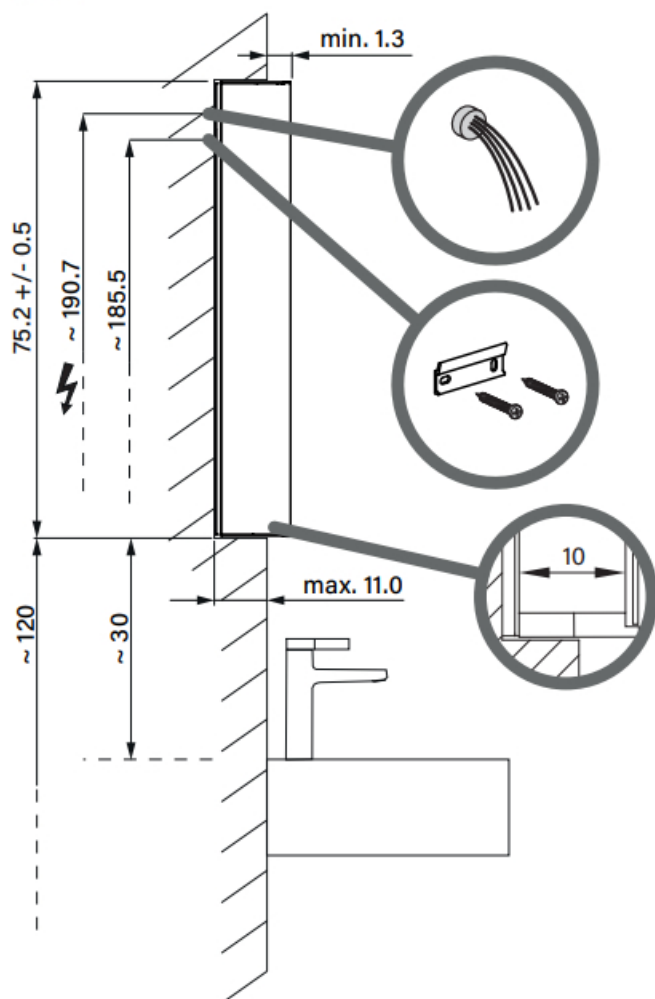
## Contents

- [1 Assembling instructions](#)
- [2 Adjustments](#)
- [3 Documents / Resources](#)
  - [3.1 References](#)
- [4 Related Posts](#)

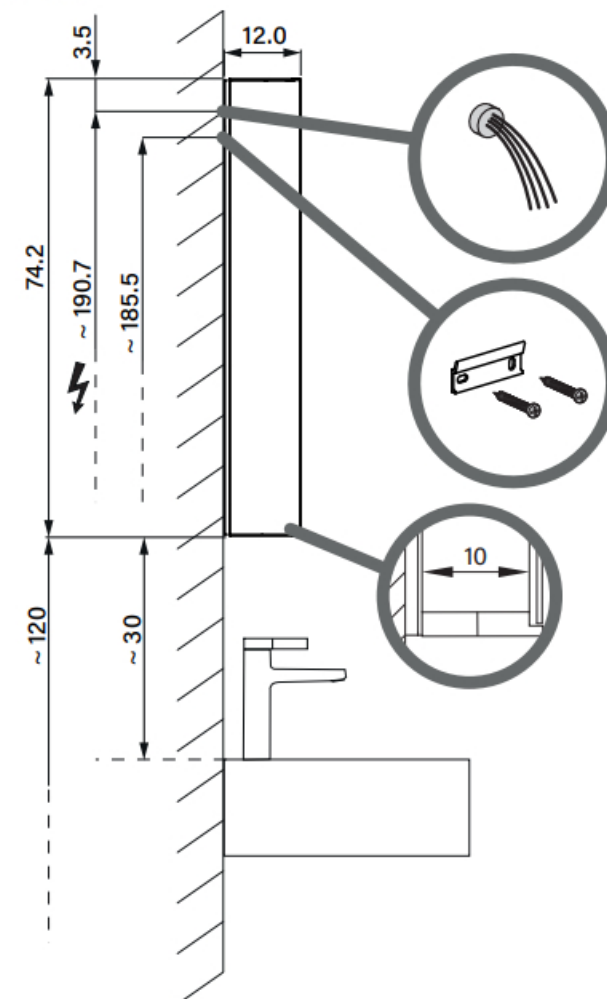
## Assembling instructions

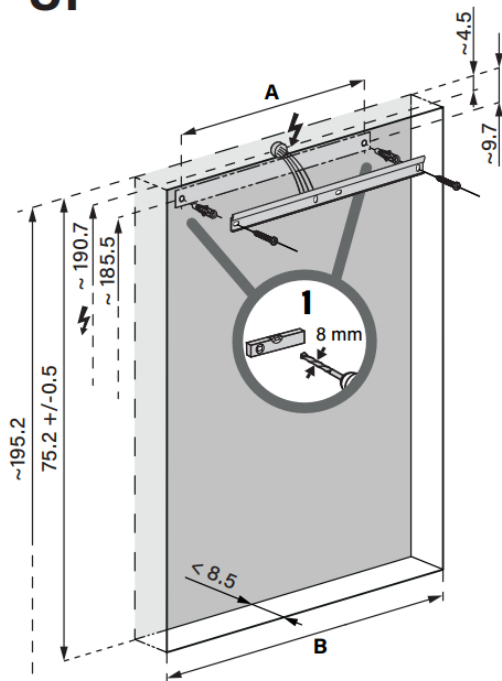
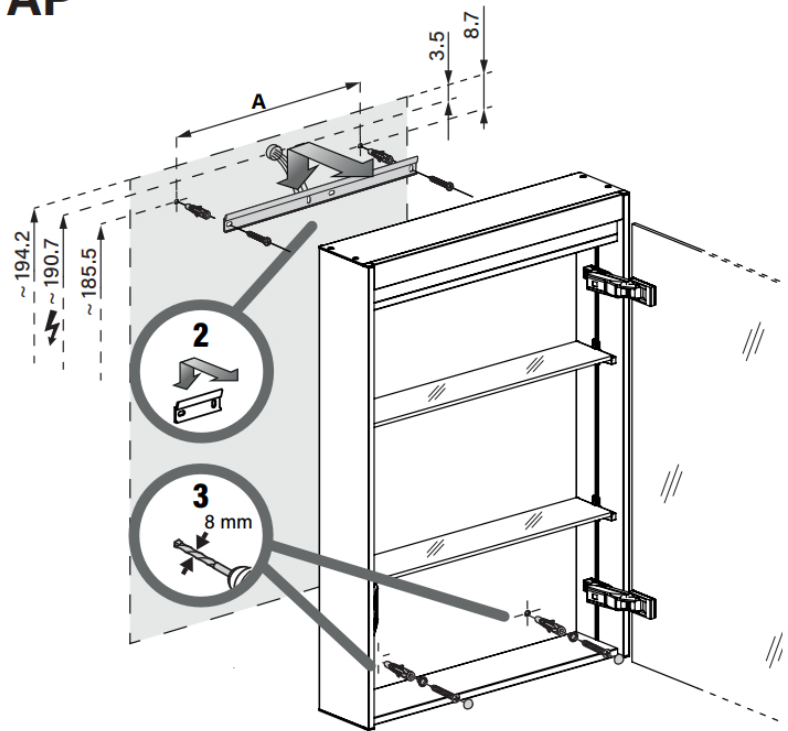
 Remove mirror doors before installation.

# UP



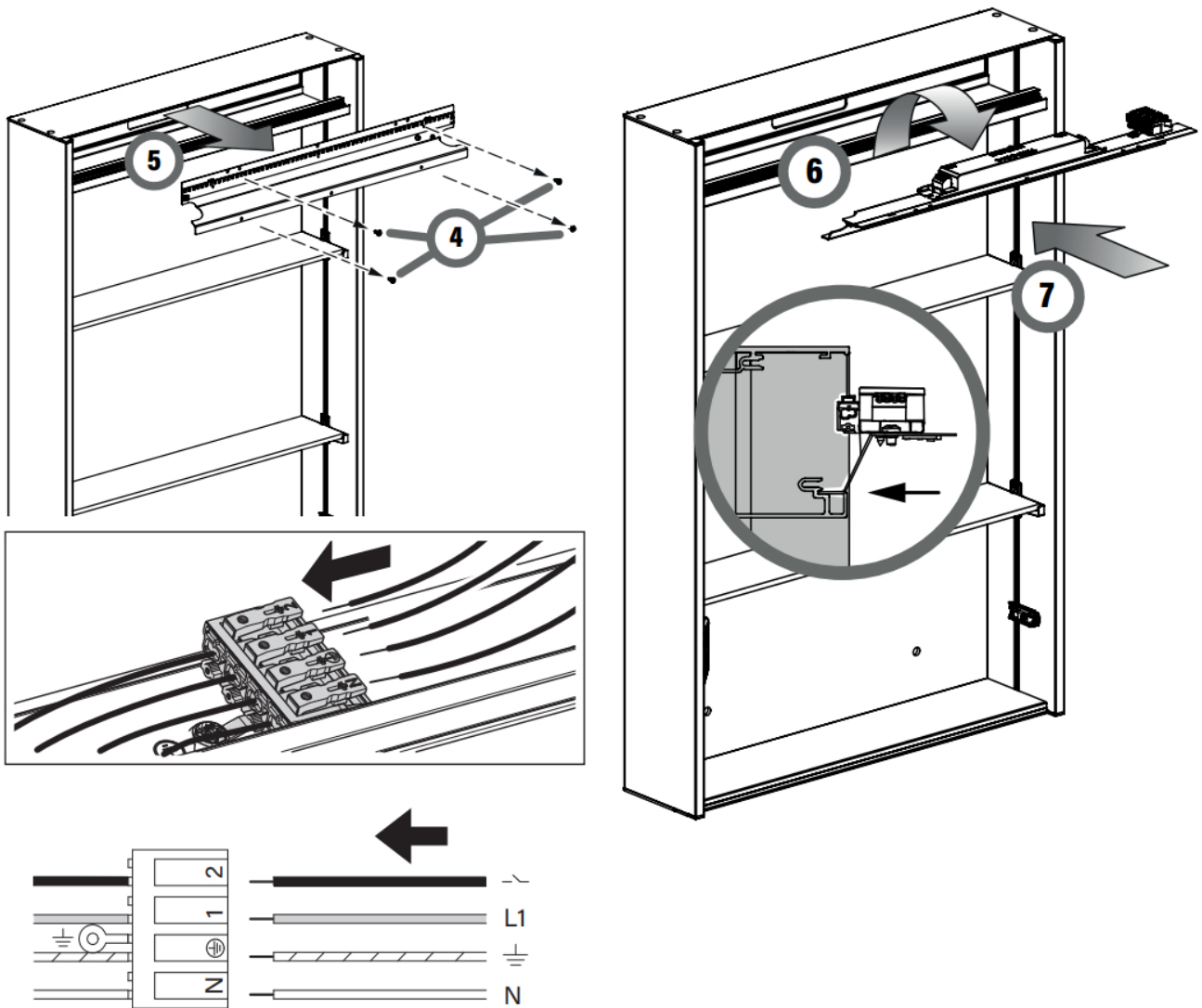
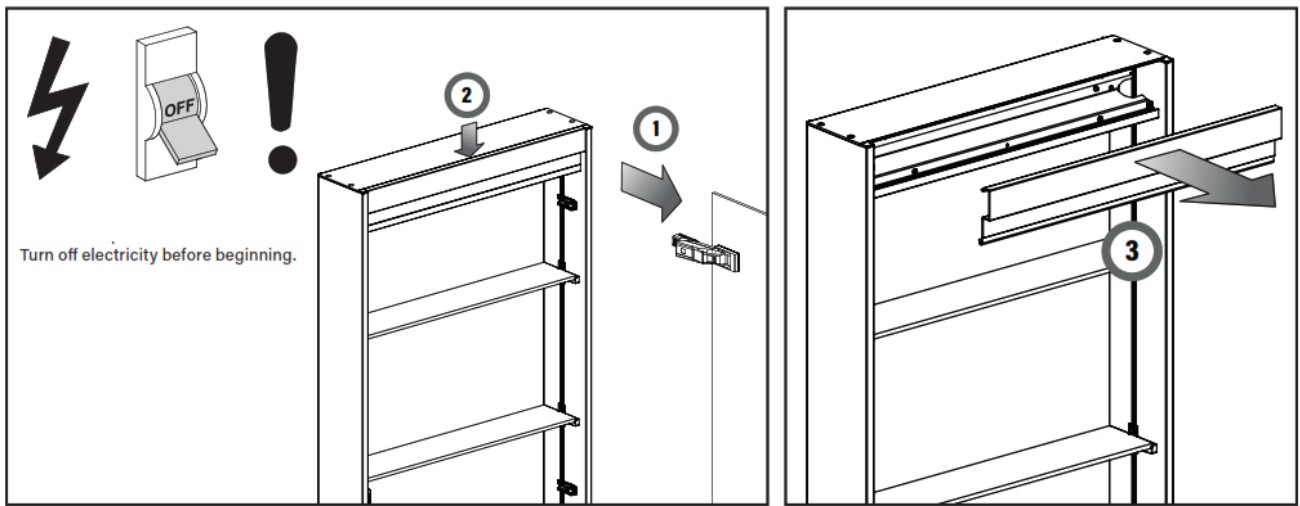
# AP



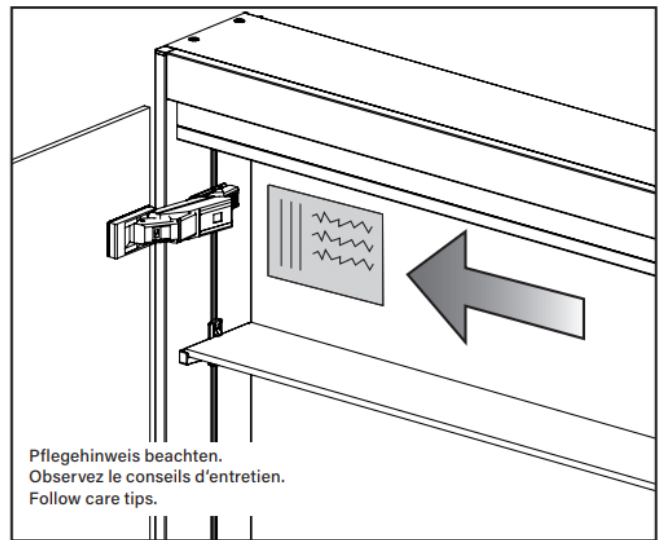
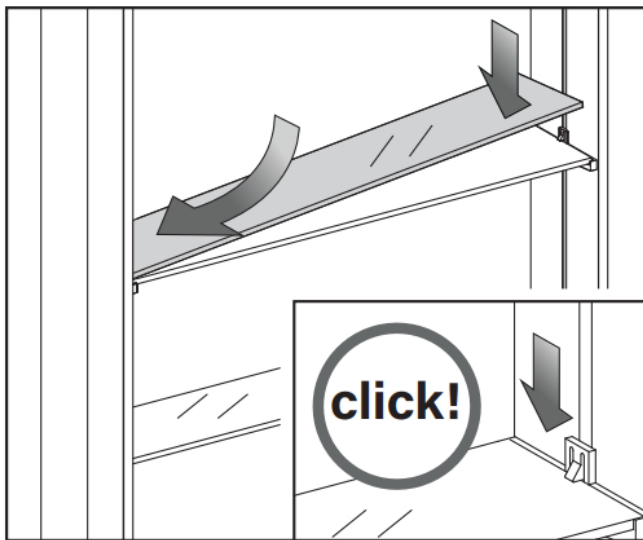
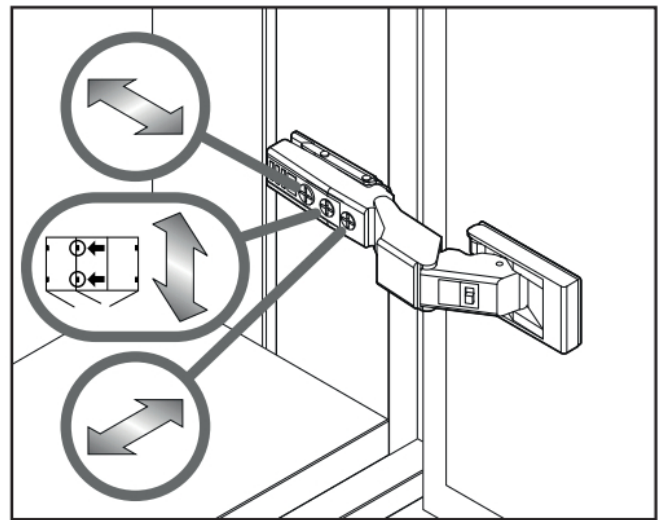
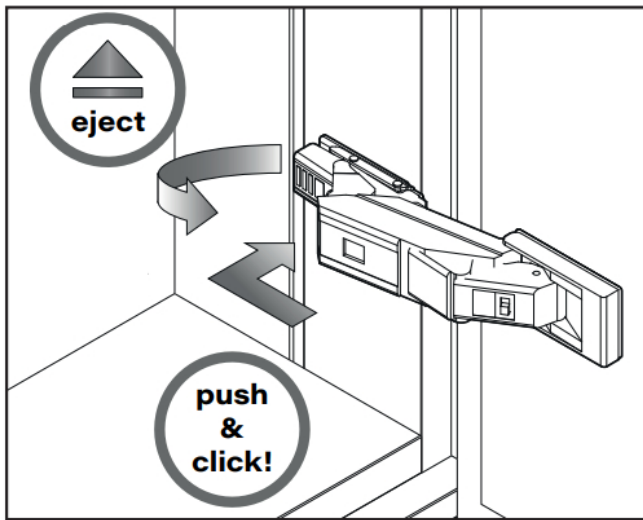
**UP****AP**

OLS1/LED	A	B
50..	35	50.0
60..	35	60.0
70..	55	70.0
80..	55	80.0
90..	65	90.0
100..	65	100.0
120..	95	120.0
130..	95	130.0
150..	125	150.0

**Wiring**



## Adjustments



Alterations are reserved 694.392 01.23/-

[www.wschneider.com](http://www.wschneider.com)

## Documents / Resources



[SCHNEIDER OBJECT Line Superior LED OBJECT Line Superior LED Mirror Cabinets](#) [pdf]

] Instruction Manual

OBJECT Line Superior LED OBJECT Line Superior LED Mirror Cabinets, Line Superior LED OBJECT Line Superior LED Mirror Cabinets, LED OBJECT Line Superior LED Mirror Cabinets, Line Superior LED Mirror Cabinets, LED Mirror Cabinets, Mirror Cabinets, Cabinets

## References

- [Schneider mirrors – the high-quality Swiss brand](#)