



Schneider

App Schneider Ambient Lighting (HCL) **Instructions for using the app**

The various control options are designed to provide more choices for the lighting mood you currently prefer.

With the selectable lighting functions, you can create an ideal room atmosphere for any occasion and determine your personal feel-good level of comfort.

Contents [[hide](#)]

[1 Setting up and pairing the app](#)

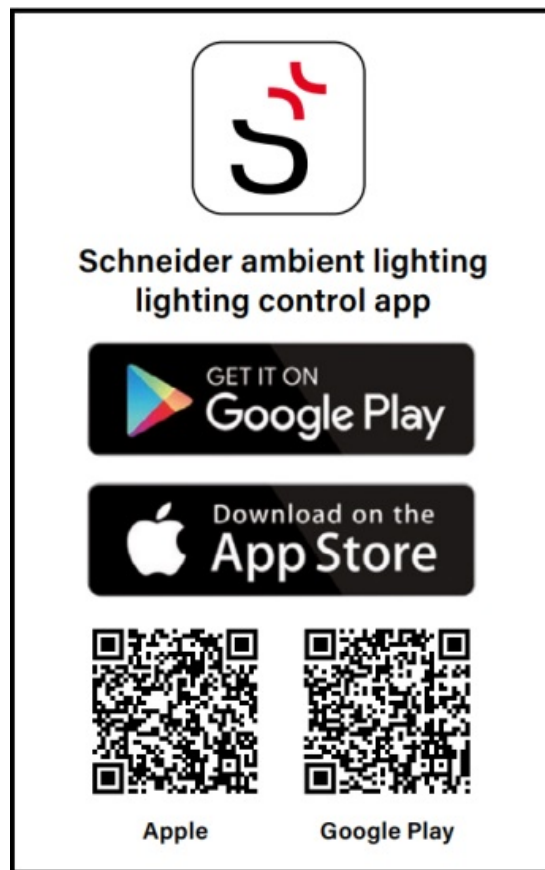
[2 Use of the app with HCL function](#)

[3 Documents / Resources](#)

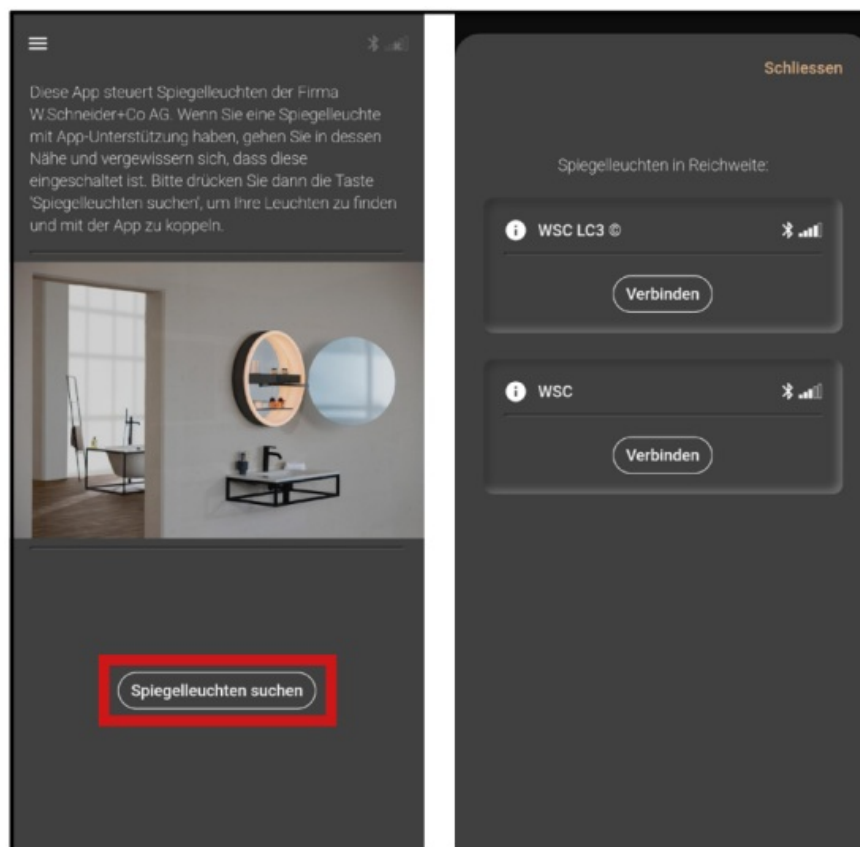
[3.1 References](#)

Setting up and pairing the app

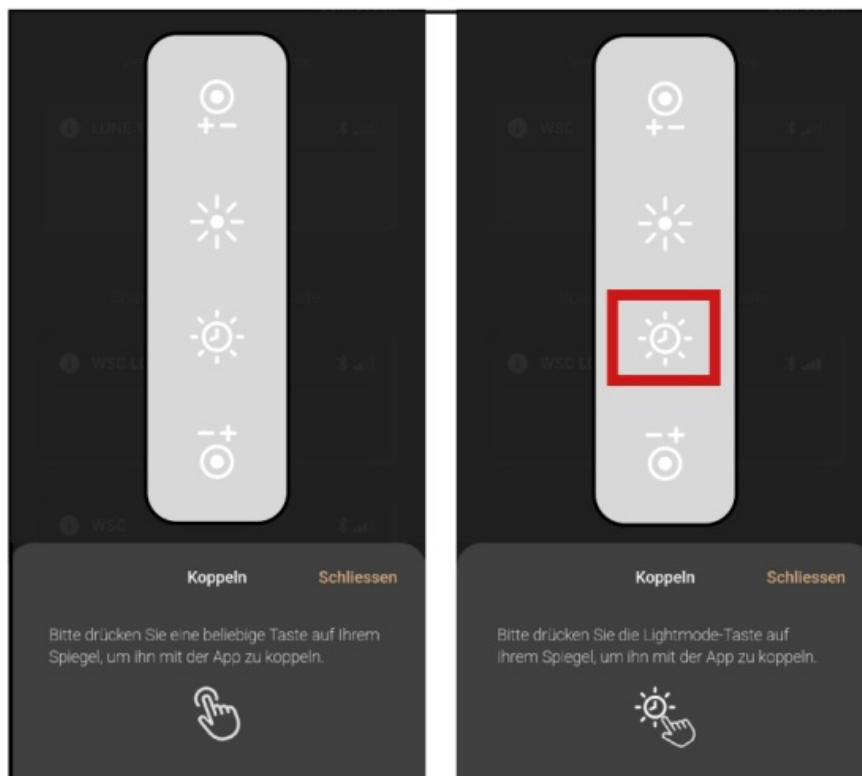
Download and open the app.



Search for and connect mirror light with Bluetooth.



Pair mirror light with app (varies depending on type of light).



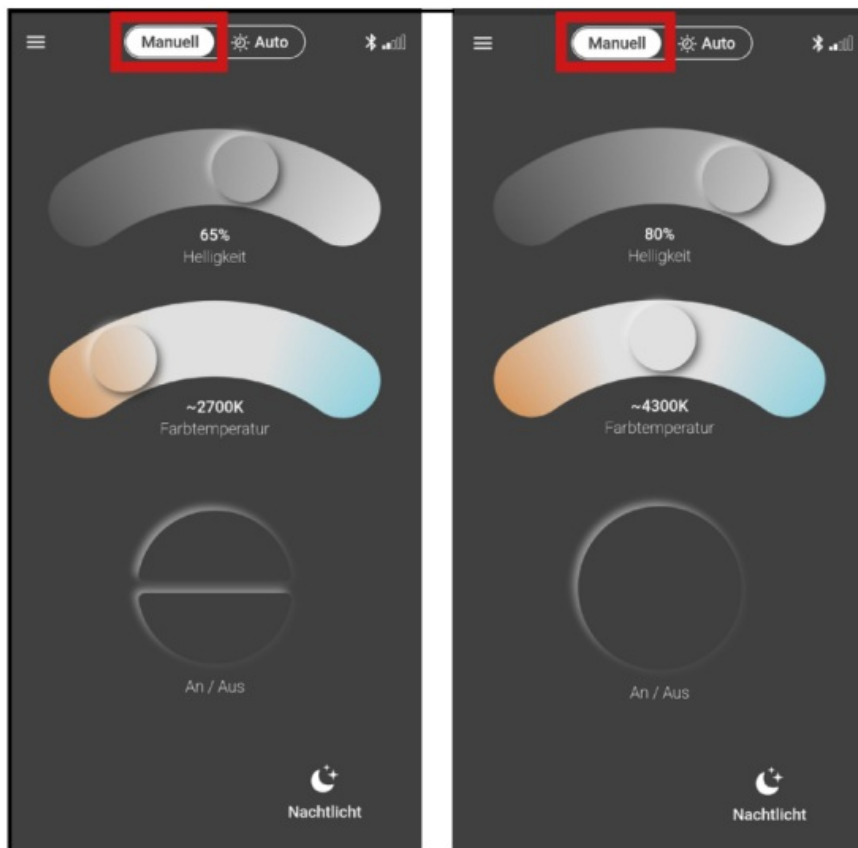
1. Select any button on the membrane keypad.
2. Select «Lightmode button» on the membrane keypad.

Use of the app with HCL function

If you have an app-compatible Schneider mirror cabinet or illuminated mirror with Human Centric Lighting (HCL) function, this means that you have human-centered lighting. It supports you in your personal daily routine, you wake up faster in the morning and sleep better at night. This promotes your natural regenerative processes and you feel more rested and healthier.

Manual operation of the mirror light:

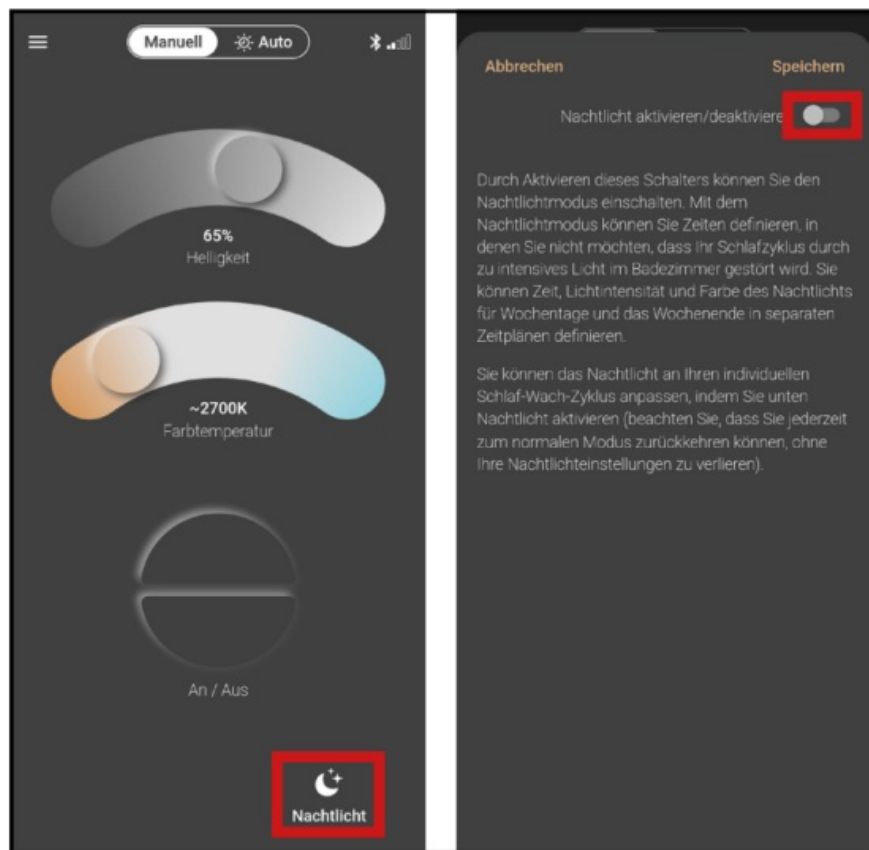
- adjust brightness (10 – 100%)
- adjust colour temperature (2000 – 6500 Kelvin)
- switch mirror light on/off



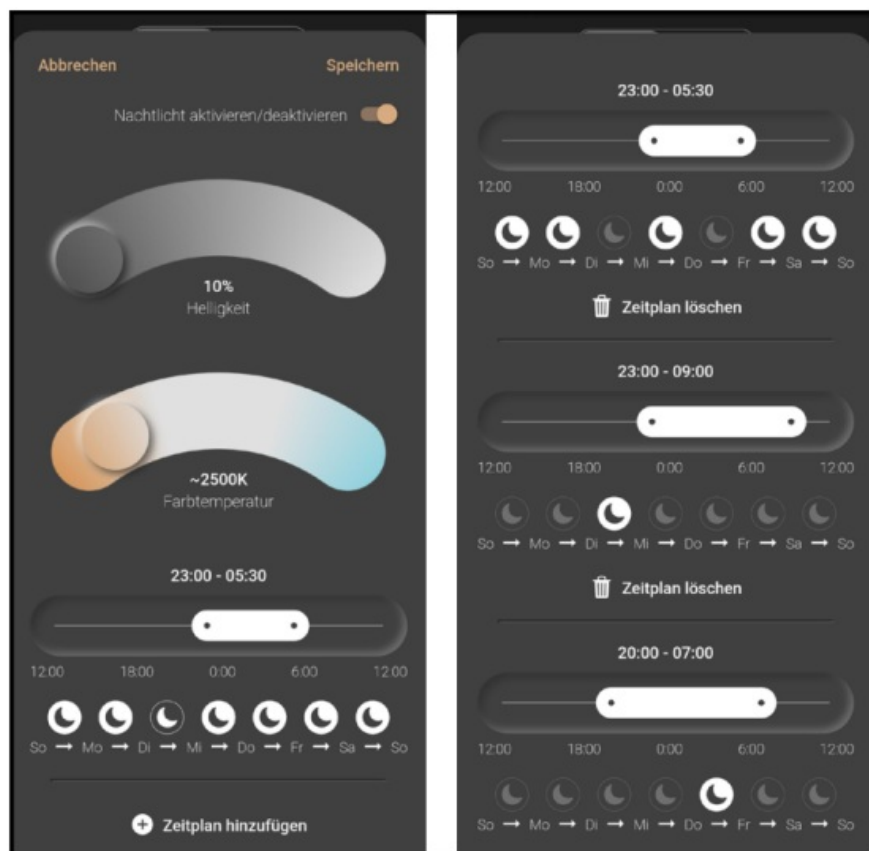
1. View for products with two lights. Switch on/ off separately.
2. View for products with only one light.

Activate or deactivate the night light.

(for products manufactured from July 2024).



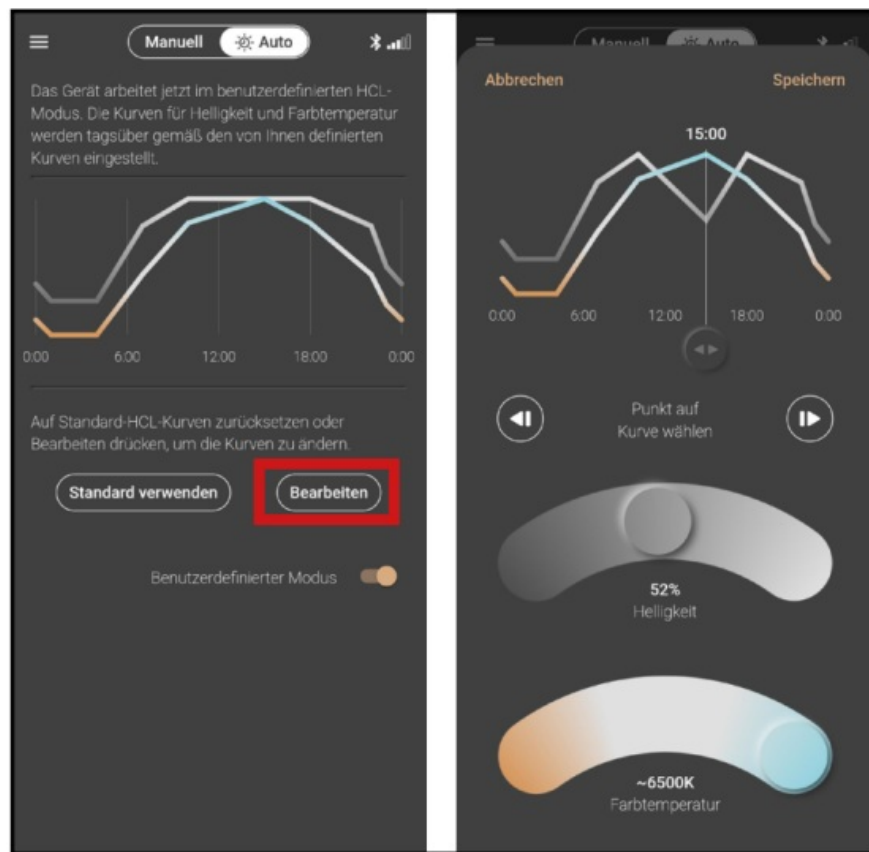
Customise night light settings and create different schedules for each day.



Activate automatic sleep-wake rhythm (HCL).



In user-defined mode, the rhythm can be customised according to individual needs (for products manufactured from July 2024).




Schneider

Alterations are reserved 05.24/-

W. Schneider+Co. AG, Büntenrietstrasse 12, CH–8890 Flums

www.wschneider.com

Documents / Resources

	<p>Schneider Ambient Lighting HCL App [pdf] User Guide</p> <p>2024_HCL_01, Ambient Lighting HCL App, Lighting HCL App, HCL App, App</p>
---	---

References

- [s Schneider Spiegel – Die hochwertige Marke aus der Schweiz](#)
- [User Manual](#)

💎 2024_HCL_01, Ambient Lighting HCL App, app, HCL App, Lighting HCL App,

📁 Schneider Schneider

—Previous Post

Schneider PM2000 Series Easy Choice Meter Owner's Manual

Leave a comment

Your email address will not be published. Required fields are marked *

Comment *

Name

Email

Website

☐ Save my name, email, and website in this browser for the next time I comment.

Post Comment

[Manuals+](#), [Privacy Policy](#) | [@manuals.plus](#) | [YouTube](#)

This website is an independent publication and is neither affiliated with nor endorsed by any of the trademark owners. The "Bluetooth®" word mark and logos are registered trademarks owned by Bluetooth SIG, Inc. The "Wi-Fi®" word mark and logos are registered trademarks owned by the Wi-Fi Alliance. Any use of these marks on this website does not imply any affiliation with or endorsement.