



## Schneider Electric Wiser Micro Module Light Switch User Guide

[Home](#) » [Schneider Electric](#) » Schneider Electric Wiser Micro Module Light Switch User Guide 

### Schneider Electric Wiser Micro Module Light Switch User Guide



## Contents

- 1 Legal Information
- 2 Safety information
- 3 About the device
- 4 Installing the device
- 5 Testing the device
- 6 Pairing the device
- 7 Configuring the device
- 8 Using the device
- 9 LED indication
- 10 Troubleshooting
- 11 Technical data
- 12 Compliance
- 13 Documents / Resources
  - 13.1 References
- 14 Related Posts

## Legal Information

The Schneider Electric brand and any trademarks of Schneider Electric SE and its subsidiaries referred to in this guide are the property of Schneider Electric SE or its subsidiaries. All other brands may be trademarks of their respective owners.

This guide and its content are protected under applicable copyright laws and furnished for informational use only. No part of this guide may be reproduced or transmitted in any form or by any means (electronic, mechanical, photocopying, recording, or otherwise), for any purpose, without the prior written permission of Schneider Electric.

Schneider Electric does not grant any right or license for commercial use of the guide or its content, except for a non-exclusive and personal license to consult it on an “as is” basis. Schneider Electric products and equipment should be installed, operated, serviced, and maintained only by qualified personnel.

As standards, specifications, and designs change from time to time, information contained in this guide may be subject to change without notice.

To the extent permitted by applicable law, no responsibility or liability is assumed by Schneider Electric and its subsidiaries for any errors or omissions in the informational content of this material or consequences arising out of or resulting from the use of the information contained herein.

## Safety information

### Important information

Read these instructions carefully and look at the equipment to become familiar with the device before trying to install, operate, service, or maintain it. The following special messages may appear throughout this manual or on the equipment to warn of potential hazards or to call attention to information that clarifies or simplifies a procedure.



The addition of either symbol to a “Danger” or “Warning” safety label indicates that an electrical hazard exists which will result in personal injury if the instructions are not followed.



This is the safety alert symbol. It is used to alert you to potential personal injury hazards. Obey all safety messages that accompany this symbol to avoid possible injury or death.



### **DANGER**

**DANGER** indicates a hazardous situation which, if not avoided, will result in death or serious injury.  
**Failure to follow these instructions will result in death or serious injury.**



### **WARNING**

**WARNING** indicates a hazardous situation which, if not avoided, could result in death or serious injury.



### **CAUTION**

**CAUTION** indicates a hazardous situation which, if not avoided, could result in minor or moderate injury.

### **NOTICE**

NOTICE is used to address practices not related to physical injury.

## **Wiser Micro Module Light Switch**



CCT5011-0002W

### **For your safety**



### **DANGER**

## **HAZARD OF ELECTRIC SHOCK, EXPLOSION, OR ARC FLASH**

Safe electrical installation must be carried out only by skilled professionals.  
Skilled professionals must prove profound knowledge in the following areas:

- Connecting to installation networks.
- Connecting several electrical devices.
- Laying electric cables.
- Safety standards, local wiring rules and regulations.

Failure to follow these instructions will result in death or serious injury.



**DANGER**

## **HAZARD OF ELECTRIC SHOCK**

- Make sure that the terminal connection area does not come in contact with the metallic parts of any device installed in the same location.
- Do not short the outputs to neutral.
- The switch contact and live conductor connection must be separated from one another by a 240 VAC basic insulation.

Failure to follow these instructions will result in death or serious injury.



**WARNING**

## **HAZARD OF ELECTRIC SHOCK**

- Observe the regulations for working on live parts.
- Only actuate the device buttons using insulated auxiliary equipment that meets the requirements of EN 60900.

Failure to follow these instructions can result in death, serious injury, or equipment damage.

## **About the device**

The Wiser Micro Module Light Switch (hereinafter referred to as Puck) combines the advantages of smart switch functionality with ordinary mechanical push-button switches. It transforms a conventional switch into a connected device that can be controlled from the switch or through the Wiser app. It can switch ohmic, inductive or capacitive loads.

**NOTE:** Do not control any devices that depend on a permanent power supply. Additional features:

- Remote controlled with maximum of 10 mechanical push-buttons.
- Setting a time schedule.

## **Installing the device**

Refer to the installation instructions supplied with this product.

## **Testing the device**

Before using the Puck, manually test the Puck and make sure that it works when connected to the devices.



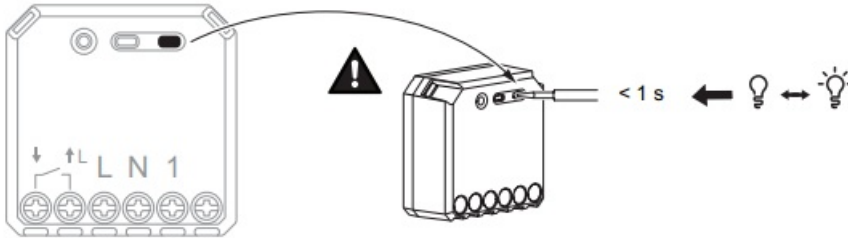
**WARNING**

## **HAZARD OF ELECTRIC SHOCK**

- Observe the regulations for working on live parts.
- Only actuate the device buttons using insulated auxiliary equipment that meets the requirements of EN 60900.



Failure to follow these instructions can result in death, serious injury, or equipment damage.

Short press the test button once, the connected device turns On/Off.



## Pairing the device

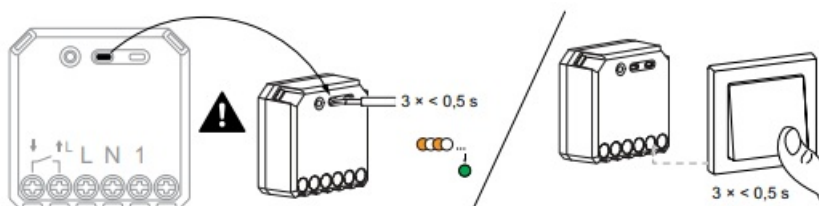
Using the Wiser Home app, pair your Puck with the Wiser Hub to access and control the Puck. Follow the steps to pair the Puck:

1. On the Home page, tap  icon.
2. Tap Devices >  icon and tap Lights > Micromodule > Next.

**NOTE:** The next screen shows the joining process of Puck.

3. Select any one of the options to add the device:
  - Short press the setup/reset button 3 times on the Puck with a screwdriver and make sure the LED blinks amber.
  - Short press the push button 3 times.

**NOTE:** If the puck is located behind the push button, the status LED is not visible.



4. Wait for a few seconds until the LED turns green. You can also see in the app that the device is joined.




5. Tap Next to enter the name of the device and assign the device to a new room or an existing room. The Puck is now listed under All devices.

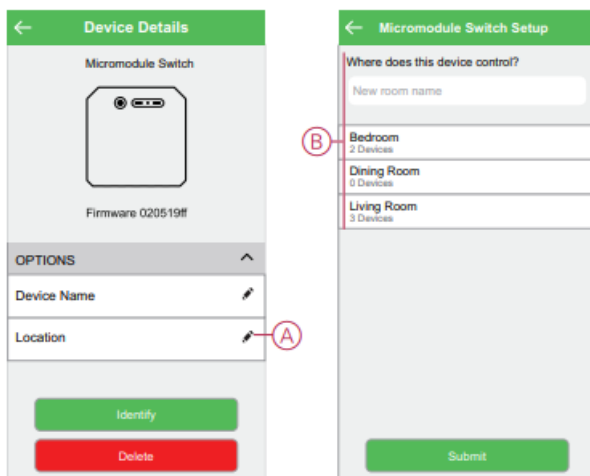
## Configuring the device

### Selecting a location for the device

Using the Wiser Home app, add the Puck to any room (such as living room, bedroom, kitchen etc).


1. On the Home page, tap  icon.
2. Tap Devices > Micromodule Switch > Location (A) to assign the puck to an existing room or a new room (B) and tap Submit.

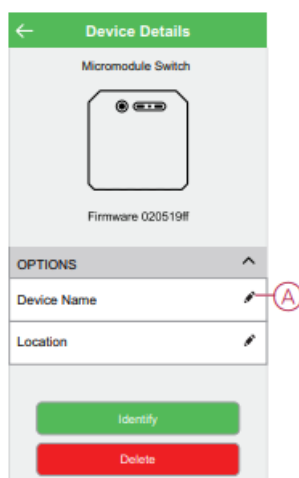
**NOTE:** Micromodule Switch is the name given to the device by the user. Any name can be assigned when pairing with the Wiser hub.



### Renaming the device


Rename the device using the Wiser Home app.

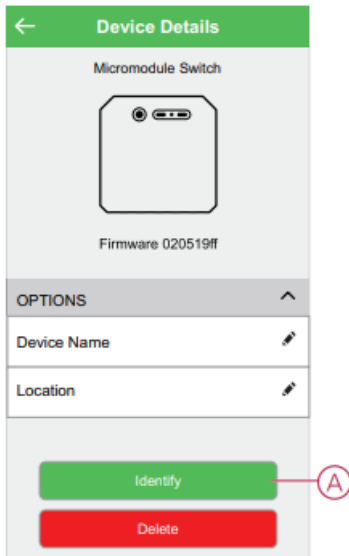
1. On the Home page, tap  icon.
2. Tap Devices > Micromodule Switch > Device Name (A) to rename the device.



### Identifying the device

Using the Wiser Home app, identify the Puck among the devices available in a home.

1. On the Home page, tap  icon.
2. Tap Devices > Micromodule Switch > Identify (A).




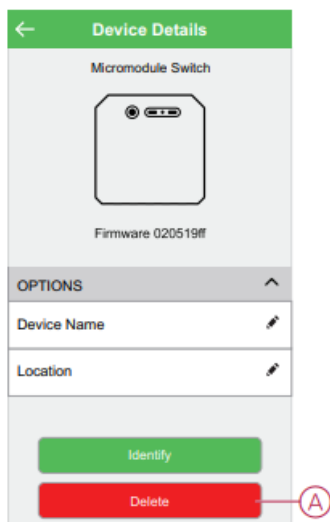
The status LED blinks red and connected devices blinks On/Off, upon successful identification of the Puck.

3. Tap OK to finish identifying the device.

### Removing the device from Wiser system

Using the Wiser app, you can remove the Puck from the system.  
Follow the steps to remove the device:

1. On the Home page, tap  icon.
2. Tap Devices > Micromodule Switch > Delete (A).



#### NOTE:

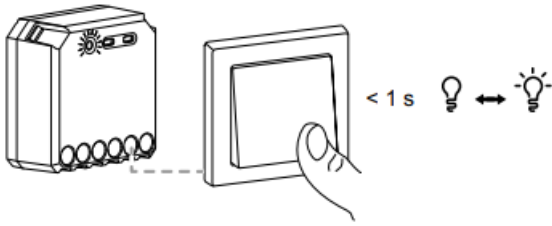
- Removing the device will reset the Puck. After reset the LED turns amber indicating that the Puck is ready to pair with another network.
- If there is a problem while pairing or resetting the Puck, refer to Resetting the device manually.

### Using the device

## Manual operation


When the puck is connected to a mechanical push button, the connected devices can be controlled manually by short pressing the push-button rocker.

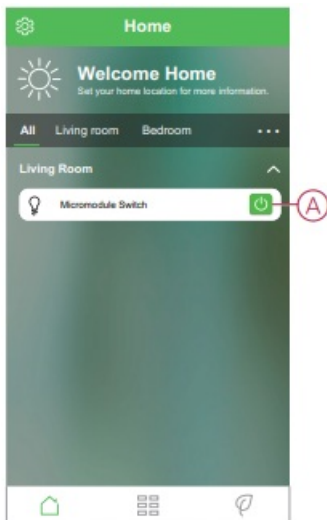
**NOTE:** Since the puck is installed inside the wall box, the status LED is not visible while using the puck.



## Turning On/Off Puck using app


Using the Wiser Home app, you can turn On/Off the Puck remotely. Follow the steps to turn On/Off the Puck using the app:

1. Go to the Home page, tap All and find the device.
2. Tap  (A) icon to turn On/Off puck.




## Setting up a schedule

The devices can be fully controlled by schedule. Once the schedule is set, the devices operates at a given time. Follow the steps to create a schedule:

1. On the Home page, tap  icon.
2. Go to Schedules > + icon to create a schedule.
3. Enter the name of the schedule (A).
4. In the TYPE menu, select Lights (B).
5. In the APPLIES TO menu, select Micromodule Switch (C) from the listed devices.



6. Tap Create to setup events.

7. Tap  icon to add an event such as STATE (lights On/Off) and WHEN ( sunrise/sunset or specific time range).


8. Tap Set to save the schedule.


## Moments

Moment allows you to group multiple actions that are usually performed together. By using the Wiser Home app, you can create moments based on your needs.

### Creating a moment

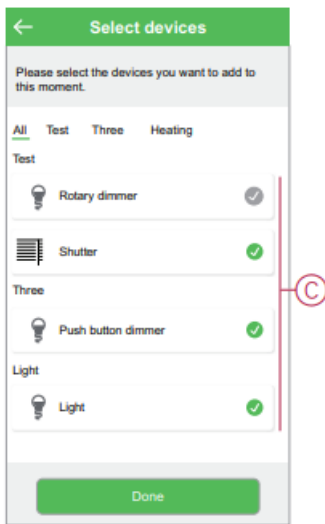
Follow the steps to create a moment:

1. On the Home page, tap  icon.
2. Go to Automation > + icon to create a moment.
3. Enter the name of the moment (A).

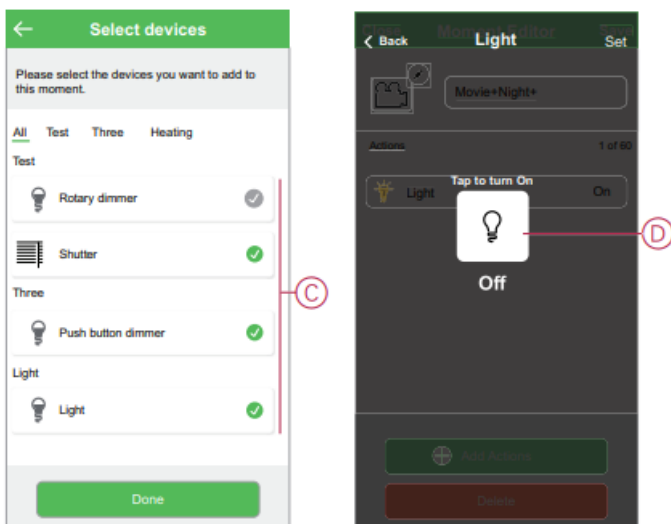
**TIP:** You can choose the cover image that best represents your moment by tapping  icon.

4. Tap Add actions (B) to select the list of devices.

5. In the Add actions menu, you can select the devices (C).





6. Once all the device are selected, tap Done.
7. On the Moment creator page, tap on the device to set the condition:
  - Tap to turn on (D)

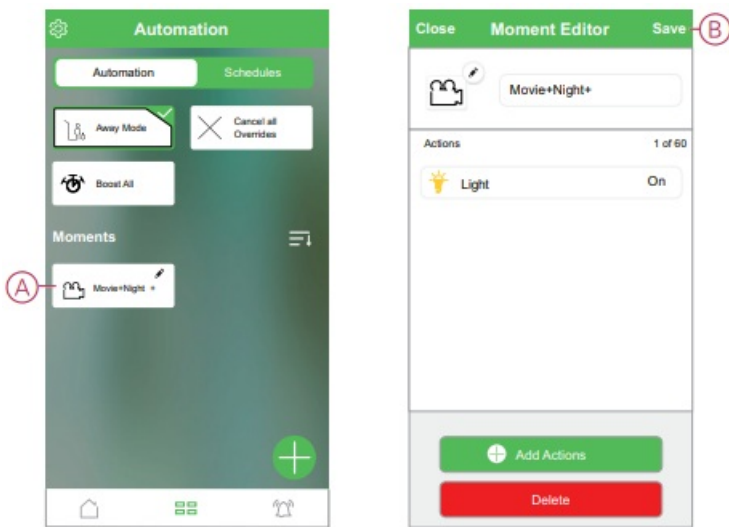


8. Once all conditions are set, tap Save.
- Once the moment is saved, it is visible on the Automation tab. You can tap on the moment to enable it.

## Editing a moment



Follow the steps to edit a moment:

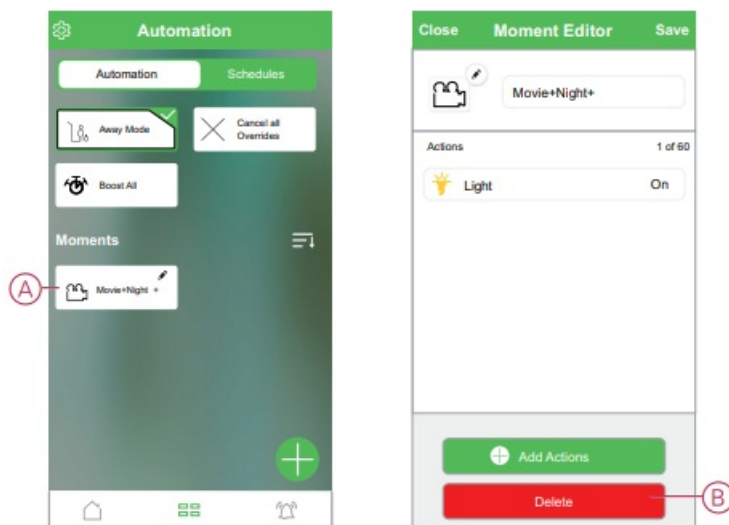
1. On the Home page, tap  icon.
2. Go to Automation, locate the moment you want to edit and tap  (A) icon.
3. On the Moment Editor page, you can tap each item to change the settings and tap Save (B).



## Deleting a moment

Follow the steps to delete a moment:

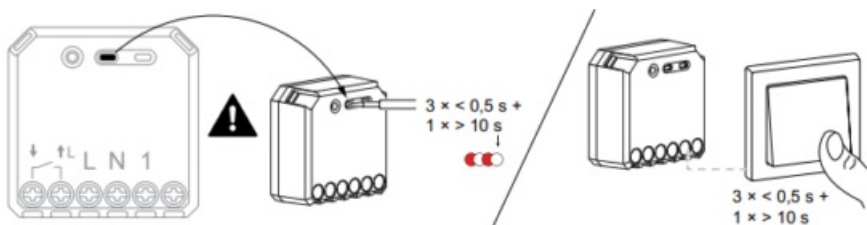
1. On the Home page, tap  icon.
2. Go to Automation, locate the moment you want to delete and tap  (A) icon.
3. On the Moment Editor page, tap Delete (B).



## Resetting the device manually



Select any one of the options to reset the device to factory default mode:

- Short press the Setup/Reset button 3 times and then long press the Setup/ Reset button once for 10 s on the puck with a screwdriver.
- Short press the push button 3 times and then long press the push button once for 10 s.





## LED indication

### Pairing the device

User Action	LED Indication	Status
Short press the setup/reset button or push button 3 times.	LED blinks amber once per second. 	Pairing mode is active for 30 seconds. When pairing is completed, LED displays green for a few seconds before turning Off. 









### Resetting the device

User Action	LED Indication	Status
Short press the setup/reset button or push button 3 times and hold it down once for > 10 s or < 20 s.	LED blinks red once per second. 	The device is in reset mode. The device then restarts and LED turns amber indicating that the device is ready for pairing. 

## Troubleshooting

Error	Possible cause	Solution
The device is not ready to pair after the device is removed from the app.	The device is not reset correctly.	Reset to factory default settings, refer to <a href="#">Resetting the device manually, page 15</a>

## Technical data

	2200 W		1000 VA	 LED	200 W
 	2000 W	 <b>C</b>	1050 VA 10 A, 140 $\mu$ F		
	500 VA		100 W		

<b>Nominal voltage</b>	AC 220-240 V, 50/60 Hz
<b>Nominal current</b>	10 AX
<b>Switching channel</b>	1, dry contact
<b>Standby</b>	Max. 0.3 W
<b>Operating Temperature</b>	0 °C to 35 °C
<b>Neutral conductor</b>	Required
<b>Connecting terminals</b>	Max. 2 x 2.5 mm <sup>2</sup> , solid or stranded types
<b>Extension connection</b>	Max. 10 mechanical push buttons
<b>Length of all cable sections</b>	Max. 50 m for 3-wire NYM cable
<b>Fuse protection</b>	16 A circuit breaker
<b>Operating frequency</b>	2405 – 2480 MHz
<b>Max. radio-frequency power transmitted</b>	<10 mW
<b>IP rating</b>	IP20
<b>Product dimensions (H x W x D)</b>	43 x 43 x 22 mm
<b>Communication protocol</b>	Zigbee 3.0 certified

## Compliance

### Compliance information for Green Premium products

Find and download comprehensive information about Green Premium products, including RoHS compliance and REACH declarations as well as Product Environmental Profile (PEP) and End-of-Life instructions (EOLI).

## General information about Green Premium products

Click the link below to read about Schneider Electric's Green Premium product strategy.

<https://www.schneider-electric.com/en/work/support/green-premium/>

## Trademarks

This guide makes reference to system and brand names that are trademarks of their relevant owners.

- Zigbee is a trademark of the Connectivity Standard Alliance™.
- Apple® and App Store® are brand names or registered trademarks of Apple Inc.
- Google Play™ Store and Android™ are brand names or registered trademarks of Google Inc.
- Wi-Fi® is a registered trademark of Wi-Fi Alliance®.
- Wiser™ is a trademark and the property of Schneider Electric, its subsidiaries and affiliated companies.

Other brands and registered trademarks are the property of their respective owners.

### Schneider Electric

35 rue Joseph Monier  
92500 Rueil Malmaison  
France

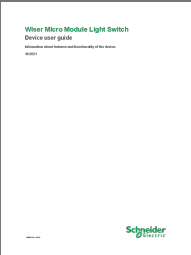
+ 33 (0) 1 41 29 70 00

[www.se.com](http://www.se.com)

As standards, specifications, and design change from time to time, please ask for confirmation of the information given in this publication.

© 2021 – Schneider Electric. All rights reserved.  
Device user guide\_00

## Documents / Resources

	<p><a href="#">Schneider Electric Wiser Micro Module Light Switch</a> [pdf] User Guide Wiser Micro Module Light Switch</p>
---	--

## References

- [Schneider Electric Global | Global Specialist in Energy Management and Automation](#)
- [Green Premium | Schneider Electric Global](#)