

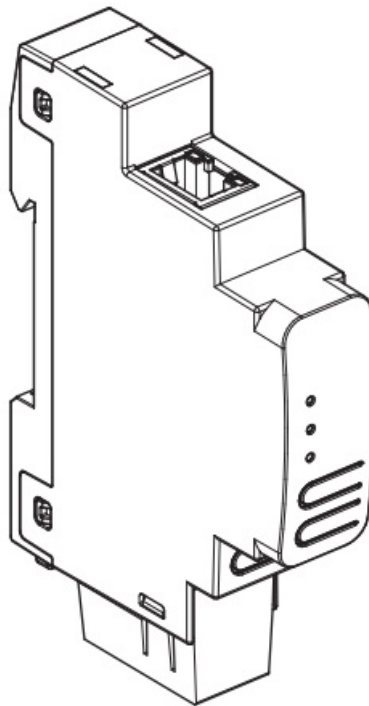


Schneider Electric MTN6502-0105 SpaceLogic KNX IP Interface DIN Rail Instructions

[Home](#) » [Schneider Electric](#) » Schneider Electric MTN6502-0105 SpaceLogic KNX IP Interface DIN Rail Instructions 



SpaceLogic KNX IP Interface DIN Rail
MTN6502-0105



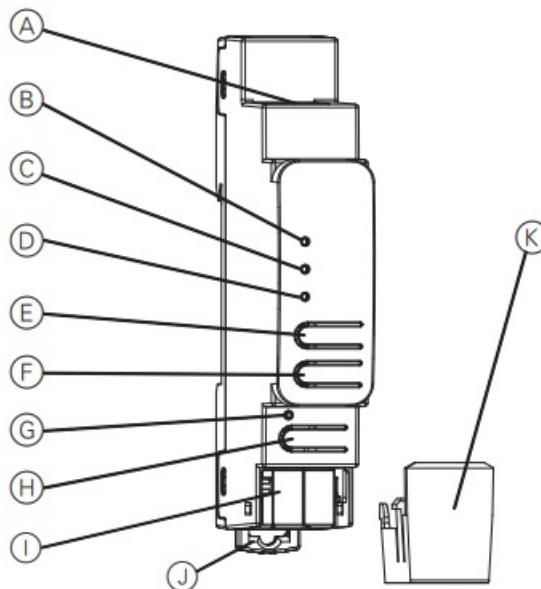
Contents

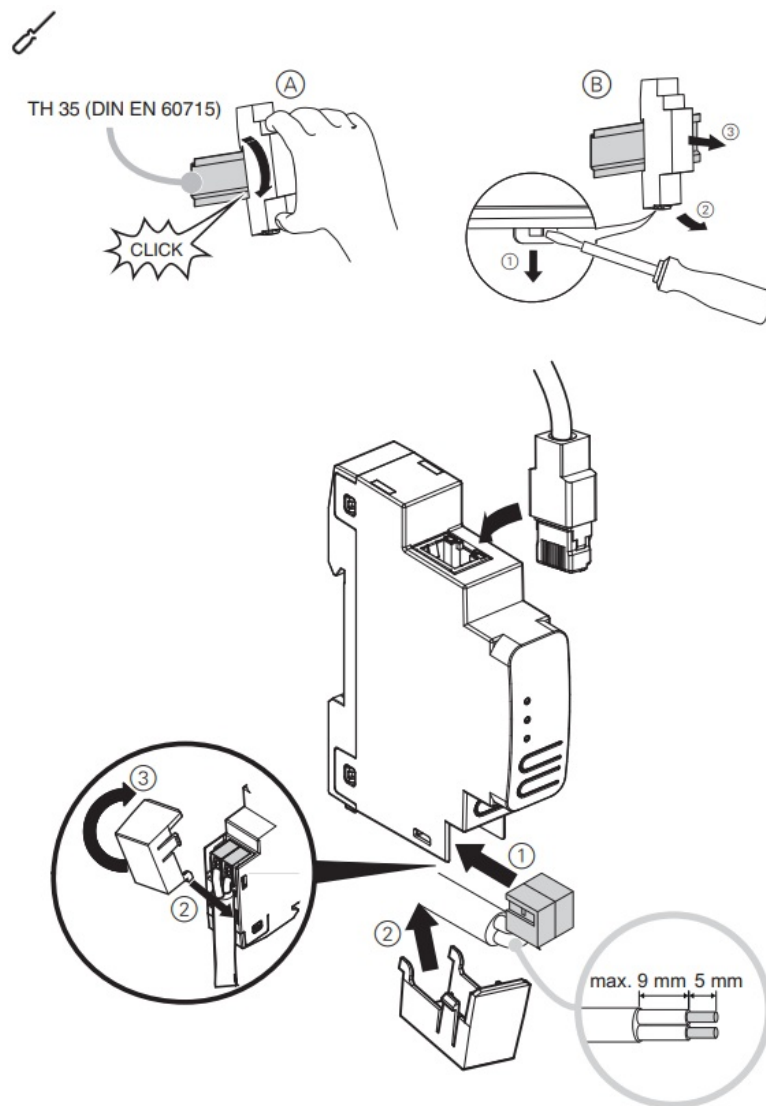
- 1 MTN6500-0103 SpaceLogic KNX IP Router DIN Rail
- 2 About this document
- 3 Connections and operating elements
- 4 Installation and connection
- 5 Technical data
- 6 Documents / Resources
 - 6.1 References
- 7 Related Posts

MTN6500-0103 SpaceLogic KNX IP Router DIN Rail



<https://go2se.com/ref=MTN6502-0105>





SpaceLogic KNX IP Router DIN Rail

About this document



You can find all the information required for safe installation in this document. More detailed product information is available on the Internet -> See QR code.

For your safety



DANGER

HAZARD OF ELECTRIC SHOCK, EXPLOSION, OR ARC FLASH

Safe electrical installation must be carried out only by skilled professionals. Skilled professionals must prove profound knowledge in the following areas:

- Connecting to installation networks
- Connecting several electrical devices
- Laying electric cables
- Connecting and establishing KNX networks
- Connecting and establishing LAN networks
- Safety standards, local wiring rules and regulations

Failure to follow these instructions will result in death or serious injury.

Getting to know the device

The SpaceLogik KNX IP Router enables the forwarding of KNX telegrams between different lines via a LAN (IP) as a fast backbone. The device also be used as a programming interface between a PC and the KNX bus. The device supports KNX Security and long frames.



Connections and operating elements

- A Ethernet/LAN Connector
- B IP LED (multicolor)
- C Mode LED (multicolor)
- D KNX LED (multicolor)
- E Button: Pass GA (Forwarding of group addressed telegrams)
- F Button: Pass IA (Forwarding of individually addressed telegrams)
- G Programming LED (red)
- H Button for programming mode
- I KNX bus connector
- J Release lever for disassembly
- K Cable cover



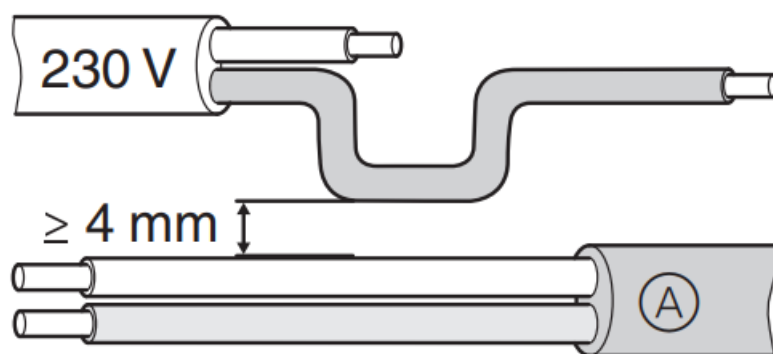
Installation and connection

- A Installing
- B Removing



WARNING

Risk of death from electric shock. The device can be damaged.
Safety clearance must be guaranteed in accordance with IEC 60664-1.
There must be at least 4 mm between the individual cores of the 230V supply cable and the KNX line A.



WARNING

Risk of death from electric shock.
Only install devices with at least basic insulation next to the device.
Failure to observe this instruction can result in death or serious injury.



Note

The installation of communication cabling for information technology must be guaranteed in accordance with DIN EN 50174.
Failure to observe these instructions can result in damage of devices or interfere the communication.

Technical data

Power supply:	via KNX bus, < 20 mA
Connection	
LAN:	RJ45 connector
KNX:	Bus connecting terminal
Dimensions (LxWxD):	100x18x66 mm
Device width:	1 module = 18 mm



Dispose of the device separately from household waste at an official collection point. Professional recycling protects people and the environment against potential negative effects.

Schneider Electric Industries SAS

If you have technical questions, please contact the Customer Care Centre in your country.

schneider-electric.com/contact

Documents / Resources

	Schneider Electric MTN6502-0105 SpaceLogic KNX IP Interface DIN Rail [pdf] Instructions MTN6502-0105, SpaceLogic KNX IP Interface DIN Rail, MTN6502-0105 SpaceLogic KNX IP Interface DIN Rail, KNX IP Interface DIN Rail, IP Interface DIN Rail, Interface DIN Rail, DIN Rail, Rail
	Schneider Electric MTN6502-0105 SpaceLogic KNX IP Interface DIN Rail [pdf] Instruction Manual MTN6502-0105 SpaceLogic KNX IP Interface DIN Rail, MTN6502-0105, SpaceLogic KNX IP Interface DIN Rail, Interface DIN Rail

References

- [Our offices around the world](#)
- [Our offices around the world](#)
- [Schneider Electric Казахстан | Мировой эксперт в управлении энергией и автоматизации](#)
- [Систэм Электрик - официальный сайт](#)
- [Schneider Electric Россия | Мировой эксперт в управлении энергией и автоматизации](#)
- [Go2SE](#)