


# Schneider Electric METSEPMRS4854W PowerLogic Communication Module Instruction Manual


[Home](#) » [Schneider Electric](#) » Schneider Electric METSEPMRS4854W PowerLogic Communication Module Instruction Manual 

Schneider Electric METSEPMRS4854W PowerLogic  
Communication Module Instruction Manual

PowerLogic™ METSEPMRS4854W

en es fr de

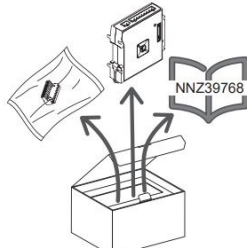






i

en 4-wire RS-485 option module

1



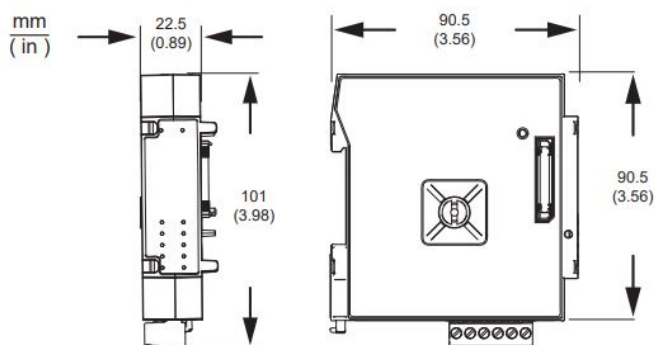
www.se.com  ION9000, PM8000, ION7400

|   |            |            |            |
|---|------------|------------|------------|
|  | ION9000    | PM8000     | ION7400    |
|   | 7EN02-0390 | 7EN02-0336 | 7EN02-0374 |
|   | 7ES02-0390 | 7ES02-0336 | 7ES02-0374 |
|   | 7FR02-0390 | 7FR02-0336 | 7FR02-0374 |
|   |            | 7ZH02-0336 |            |

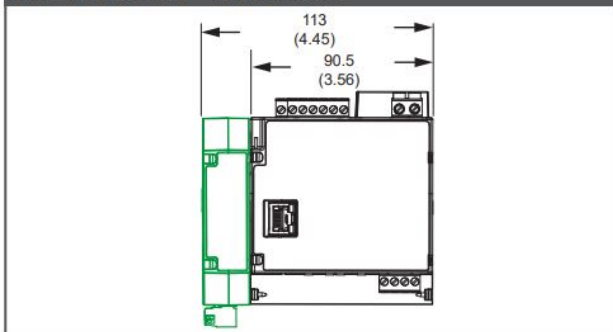
## Contents

- 1 Dimensions
- 2 Safety precautions
- 3 Mounting
- 4 Wiring diagrams
- 5 Description
- 6 Verification
- 7 Specifications
- 8 Documents / Resources
  - 8.1 References
- 9 Related Posts

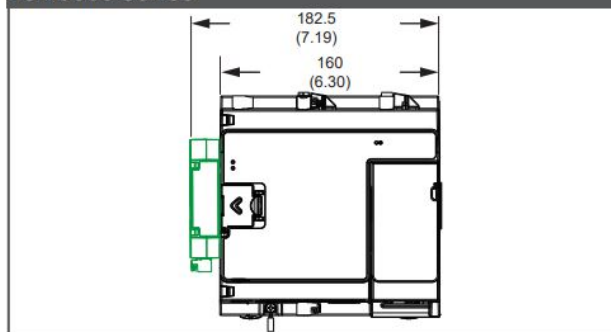
## Dimensions



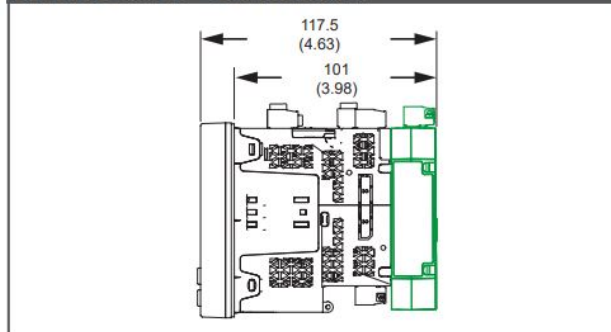
PM8000 series – DIN Mount



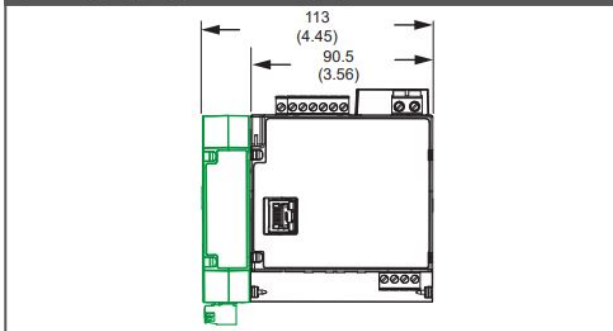
ION9000 series



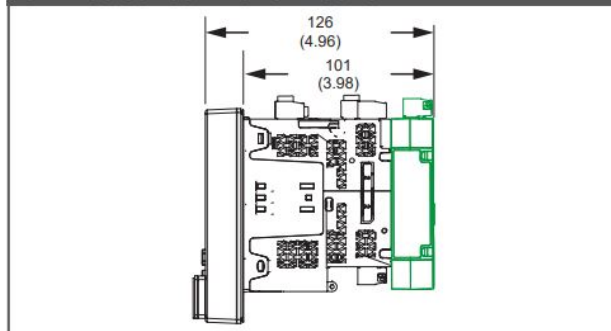
PM8000 series – Panel Mount



ION7400 series – DIN Mount



ION7400 series – Panel Mount



## Safety precautions

⚠ DANGER

HAZARD OF ELECTRIC SHOCK, EXPLOSION, OR ARC FLASH

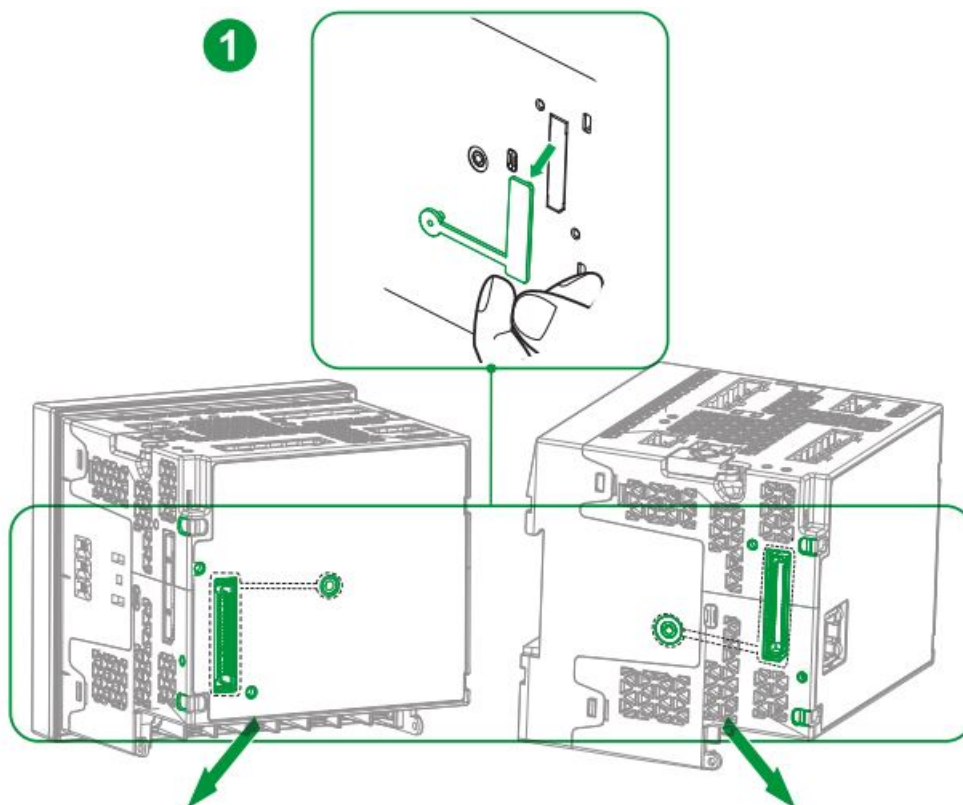
- Apply appropriate Personal Protective Equipment (PPE) and follow safe electrical work practices. See NFPA 70E, CSA Z462 or other local standards.
- Turn off all power supplying this device and the equipment in which it is installed before working on or in the equipment.
- Always use a properly rated voltage sensing device to confirm that all power is off.
- Do not exceed the maximum ratings of this device.
- Do not use this device for critical control or protection of persons, animals, property or equipment.
- Assume communications and I/O wiring are hazardous live until determined otherwise.

Failure to follow these instructions will result in death or serious injury.

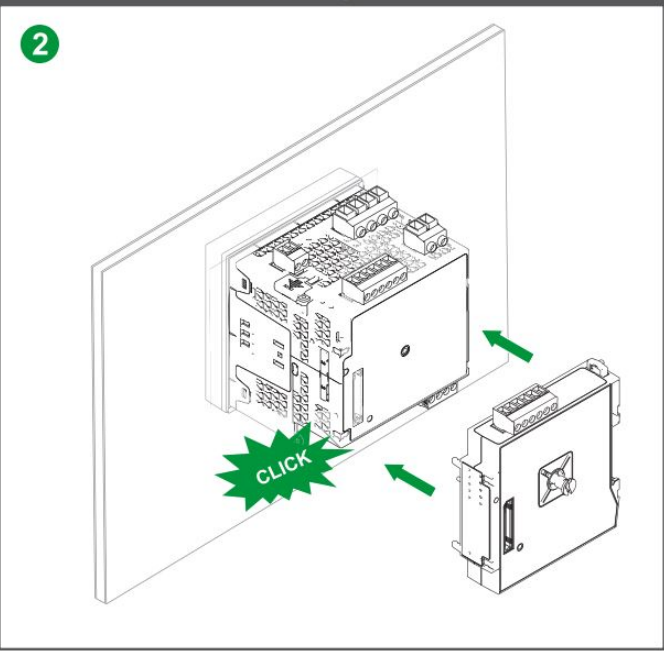
## Mounting



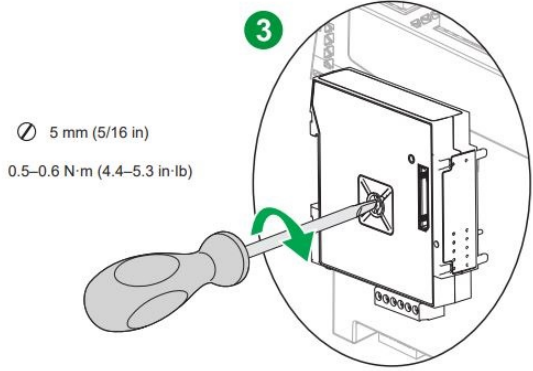
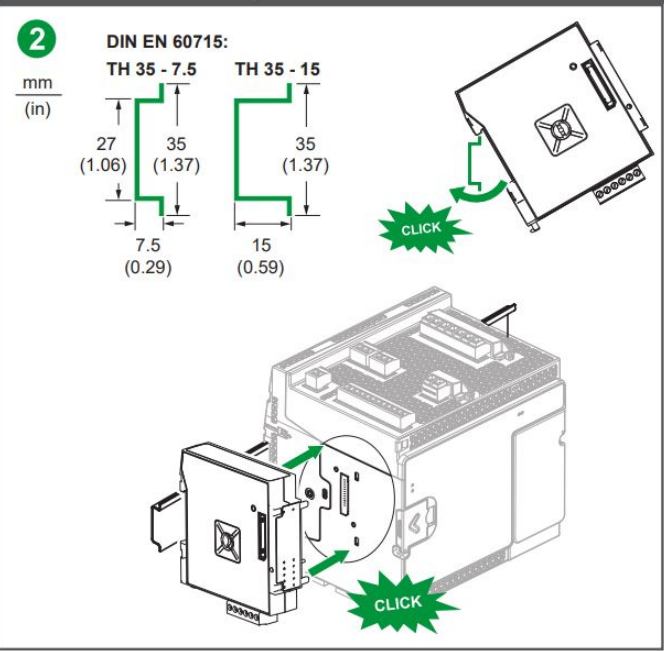
mm  
( in )



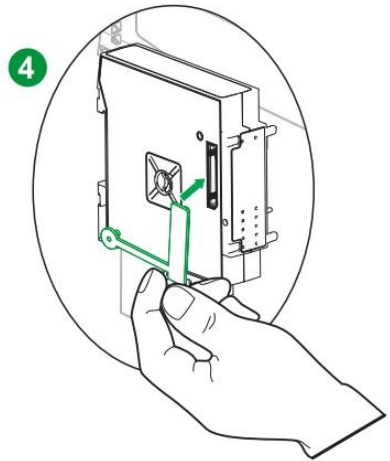
Panel-mount / Montaje en panel / Montage sur panneau / Schalttafelmontage



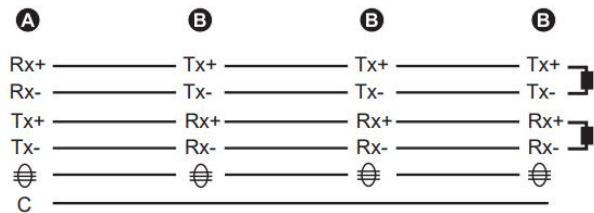
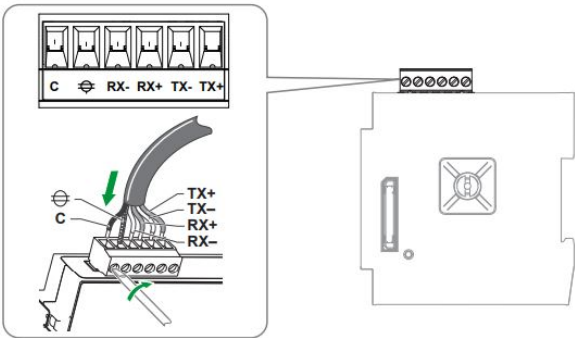
DIN-mount / Montaje en carril DIN / Montage DIN / DIN-Schienenmontage



en Maximum total modules = 4. See Specifications section for more information.



Wiring diagrams

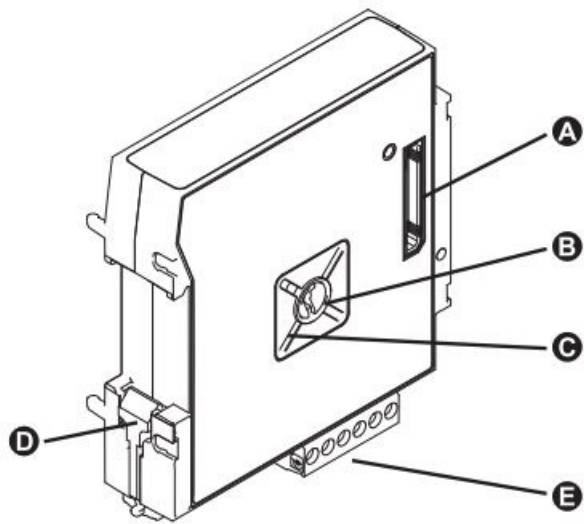


| INPUTS |   |
|--------|---|
|        | 0.20–2.5 mm <sup>2</sup><br>(24–12 AWG) |
|        | 7 mm (0.28 in)                          |
|        | Ø 3.5 mm (1/8 in)                       |
|        | 0.5–0.6 N·m<br>(4.4–5.3 in·lb)          |

|   | en            | es                | fr             | de              |
|---|---------------|-------------------|----------------|-----------------|
| A | Gateway       | Pasarela          | Passerelle     | Gateway         |
| B | Serial device | Dispositivo serie | Appareil série | Serielles Gerät |

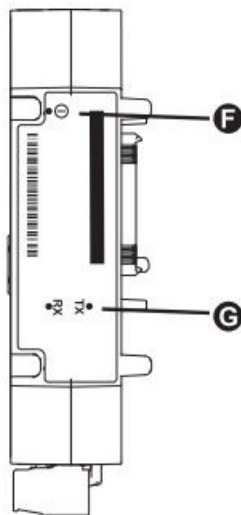
Description

en



- A** Module connection
- B** Mounting screw
- C** Sealing point
- D** DIN mount clip
- E** 4-Wire RS-485 port
- F** Power/status LED, green or red
- G** RS-485 send/receive LEDs

## LEDs



|          |  | en  |
|----------|--|---|
| <b>F</b> |  | Off:<br>Unpowered                             |
|          |  | On green:<br>Normal operation                 |
|          |  | On red:<br>Option bus error                   |
| <b>G</b> |  | Off:<br>Idle                                  |
|          |  | Flashing amber:<br>send/receive data activity |

## Verification

### Used as Gateway

1. Type meter's IP address in a web browser to connect to meter's webpage.
2. Navigate to Setup > Serial Port.
3. Configure the following settings to match your connection:
  - COM1/RS485#1 – Protocol
  - COM1/RS485#1 – Baud Rate
  - COM1/RS485#1 – Unit ID
  - COM1/RS485#1 – Bias = ON
4. Navigate to Diagnostics > Serial Port to verify meter is communicating properly.

## Used as a direct Serial Device

1. On the meter front panel, press the Home button.
2. Navigate to Setup Menu > Communications Setup > COM1 Setup screen.
3. Verify the following settings to match your serial connection:
  - COM1 – Protocol
  - COM1 – Baud Rate
  - COM1 – Unit ID
  - COM1 – Serial Port
  - COM1 – Bias = OFF
4. Use ION Setup to view device settings to verify meter is communicating properly.

## Specifications

### Input

- Number of ports: 1
- Type: RS-485 / RS-422
- Cable type: Shielded twisted pair
  - \*Data pairs (+/-) should be twisted pair

### Environment

- -25 to 70 °C (-13 to 158 °F) operating temperature
- Maximum operating temperature is based on the quantity and type of attached option modules:

| Max. temp   | Analog | Digital, *4-wire,<br>*Fiber-Ethernet |
|---|--------|--------------------------------------|
| 70 °C<br>(158 °F)   | 0      | 0–4                                  |
|   | 1      | 0–3                                  |
|   | 2      | 0                                    |
| 60 °C<br>(140 °F)   | 2      | 0–2                                  |
|   | 3      | 1                                    |
|   | 4      | 0                                    |
| *4-wire and Fiber-Ethernet limited to one module each per meter |        |                                      |

- 5% to 95% RH non-condensing
- Maximum dewpoint 37 °C (99 °F) –40 to 85 °C (–40 to 185 °F) storage temperature
- Pollution degree 2
- < 3000 m (9843 ft.) above sea level
- IP30
- Not suitable for wet locations



- For indoor use only

## Notices

Read these instructions carefully and look at the equipment to become familiar with the device before trying to install, operate, service or maintain it.

Electrical equipment should be installed, operated, serviced and maintained only by qualified personnel. No responsibility is assumed by Schneider Electric for any consequences arising out of the use of this material. A qualified person is one who has skills and knowledge related to the construction, installation, and operation of electrical equipment and has received safety training to recognize and avoid the hazards involved.

Power Logic and Schneider Electric are trademarks or registered trademarks of Schneider Electric in France, the USA and other countries.

- This product must be installed, connected and used in compliance with prevailing standards and/or installation regulations.
- If this product is used in a manner not specified by the manufacturer, the protection provided by the product may be impaired.
- The safety of any system incorporating this product is the responsibility of the assembler/installer of the system. As standards, specifications and designs change from time to time, always ask for confirmation of the information given in this publication.

Schneider Electric 35 rue Joseph Monier 92500 Rueil Malmaison France

[www.se.com](http://www.se.com)



<https://www.productinfo.schneider-electric.com/portals/ui/ION9000/>

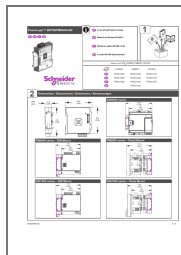


[www.se.com/ww/en/download/search/METSEPMRS4854W/](http://www.se.com/ww/en/download/search/METSEPMRS4854W/)



<https://www.youtube.com/user/SchneiderCorporate>

## Documents / Resources



### [Schneider Electric METSEPMRS4854W PowerLogic Communication Module](#) [pdf] Instruction Manual

ION9000 series, PM8000 series, ION7400 series, METSEPMRS4854W, PowerLogic Communication Module, METSEPMRS4854W PowerLogic Communication Module, METSEPMRS4854W Communication Module, Communication Module, Module

## References

- [Schneider Electric Global | Global Specialist in Energy Management and Automation](#)