
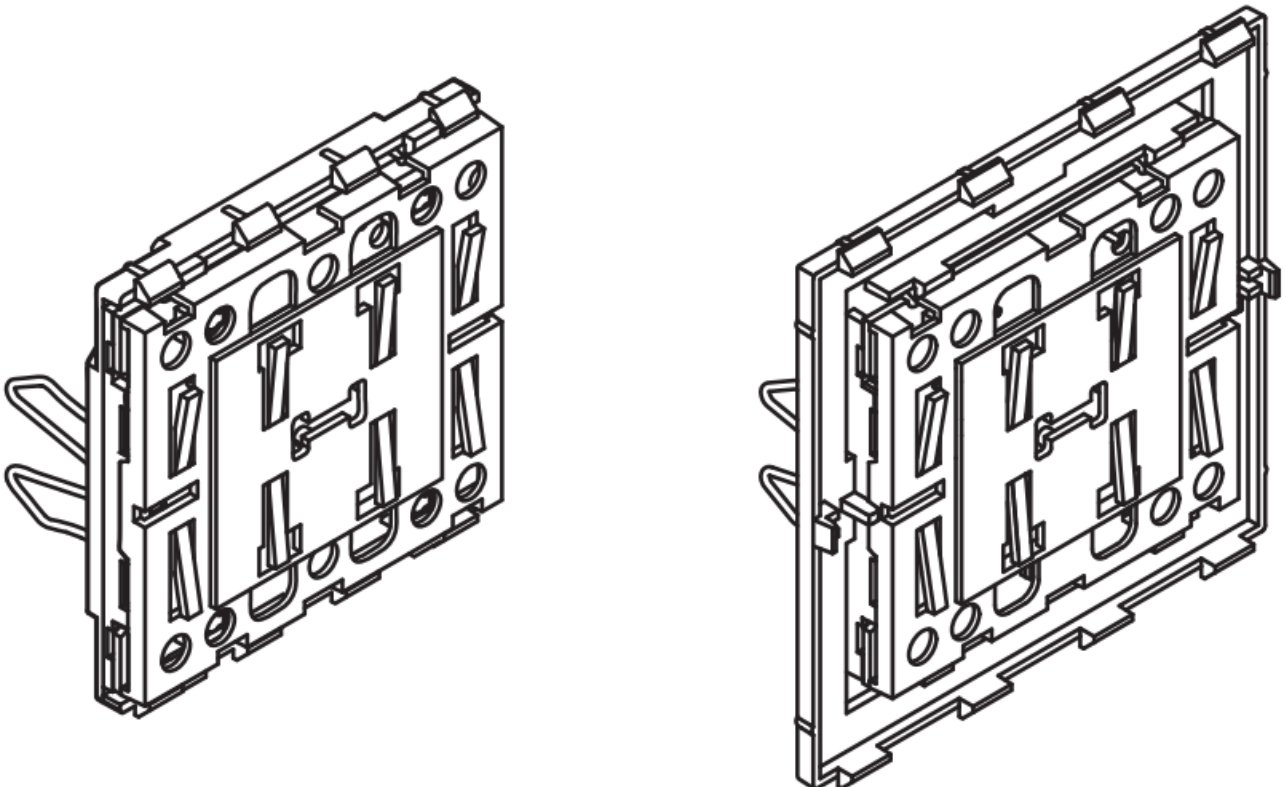


Schneider Electric MEG5116-0300 Connected Push Button Module Instruction Manual

[Home](#) » [Schneider Electric](#) » Schneider Electric MEG5116-0300 Connected Push Button Module Instruction Manual 

Schneider Electric MEG5116-0300 Connected Push Button Module



Connected Push-button Module, 1-gang/2-gang

Contents

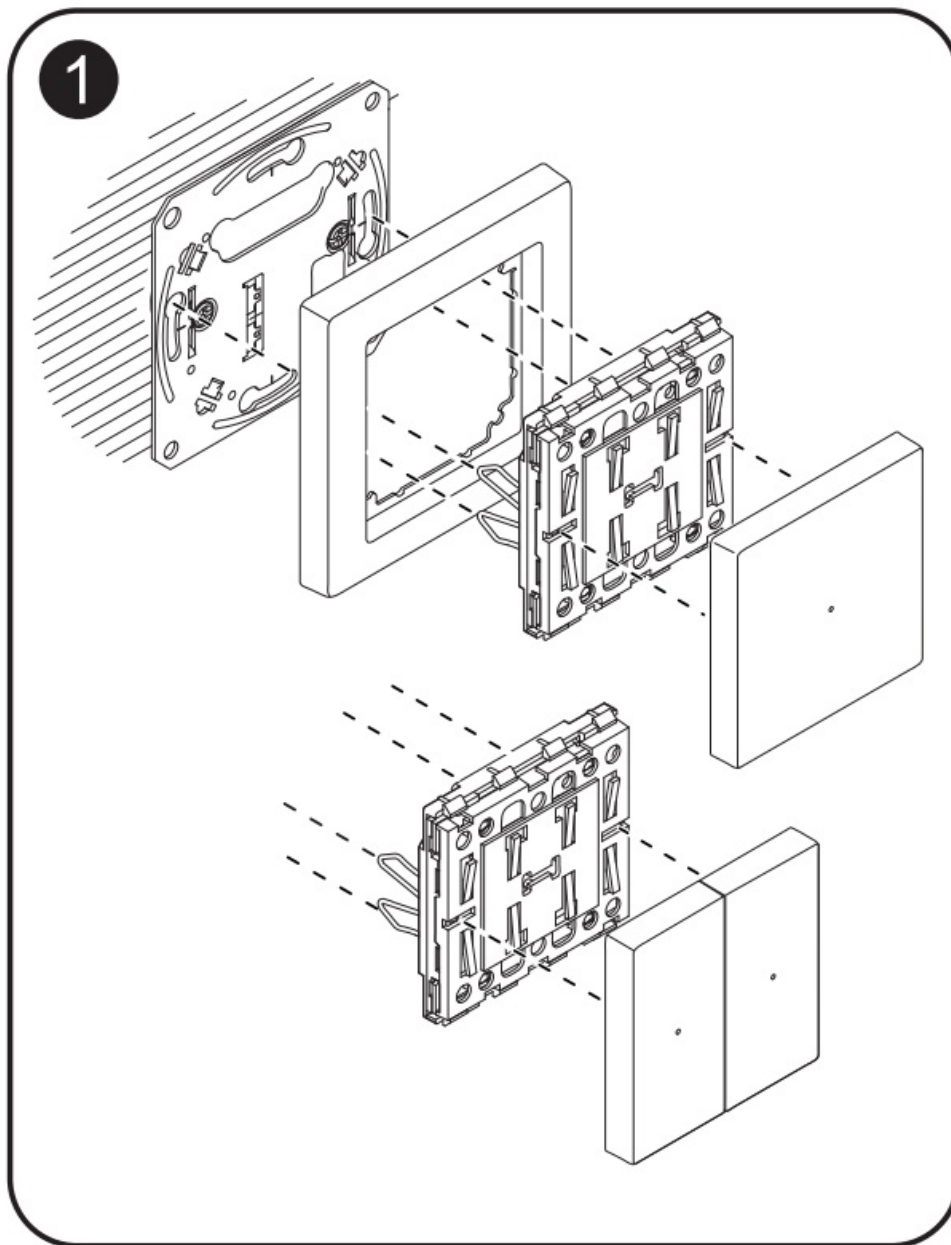
- [1 About the product](#)
- [2 Mounting](#)
- [3 Reading the full Device User Guide online](#)
- [4 Technical data](#)
- [5 Trademarks](#)
- [6 EU Declaration of Conformity](#)
- [7 Schneider Electric Industries SAS](#)
- [8 Customers Support](#)
- [9 Documents / Resources](#)
 - [9.1 References](#)
- [10 Related Posts](#)

About the product

With the Connected Push-button Module 1-gang/2- gang (hereinafter referred to as push-button module) you can carry out various functions, depending on the insert, such as switching, dimming and controlling blinds.

The push-button module can also be connected to the Wiser system.

Mounting



Reading the full Device User Guide online



Scan the QR code and choose your language for complete information about the device, including operation, configuration and using the product with a Wiser system.

Technical data

Display elements:	1, respectively 2 LED (status and orientation)
Operating elements:	2, respectively 4 push-buttons
Operating frequency	2405-2480 MHz
Max. radio-frequency power transmitted:	< 10 mW
Communication protocol:	ZigBee 3.0 certified

Trademarks

- Wiser™ is a trademark and the property of Schneider Electric SE, its subsidiaries and affiliated companies.
- Zigbee® is a registered trademark of the Connectivity Standards Alliance.

Other brands and registered trademarks are the property of the relevant owners.

EU Declaration of Conformity

Hereby, Schneider Electric Industries, declares that this product is in compliance with the essential requirements and other relevant provisions of RADIO EQUIPMENT DIRECTIVE 2014/53/EU. Declaration of conformity can be downloaded on: se.com/docs.

Schneider Electric Industries SAS

If you have technical questions, please contact the Customer Care Centre in your country. se.com/contact

Customers Support



Collection points on www.quefairedemesdechets.fr
Choose to repair or donate your device!



Documents / Resources



[Schneider Electric MEG5116-0300 Connected Push Button Module](#) [pdf] Instruction Manual
MEG5116-0300 Connected Push Button Module, MEG5116-0300, Connected Push Button Module, Push Button Module, Button Module, Module

References

- [Schneider Electric Global | Global Specialist in Energy Management and Automation](#)
- [Contact Support | Schneider Electric Global](#)
- [Select your location | Schneider Electric Global](#)
- [Que Faire de mes Déchets ? Découvrez les solutions pour tous vos déchets et nos conseils pour en produire moins.](#)
- [User Manual](#)

[Manuals+](#). [Privacy Policy](#)

This website is an independent publication and is neither affiliated with nor endorsed by any of the trademark owners. The "Bluetooth®" word mark and logos are registered trademarks owned by Bluetooth SIG, Inc. The "Wi-Fi®" word mark and logos are registered trademarks owned by the Wi-Fi Alliance. Any use of these marks on this website does not imply any affiliation with or endorsement.