




Schneider Electric LV434196 Modbus Internal Com Module Instructions

[Home](#) » [Schneider Electric](#) » Schneider Electric LV434196 Modbus Internal Com Module Instructions 



Product End of Life Instructions

Contents

- 1 Potential disassembly risks
- 2 End of Life Instructions
- 3 Product description
- 4 Additional information
- 5 Documents / Resources
- 5.1 References



Potential disassembly risks



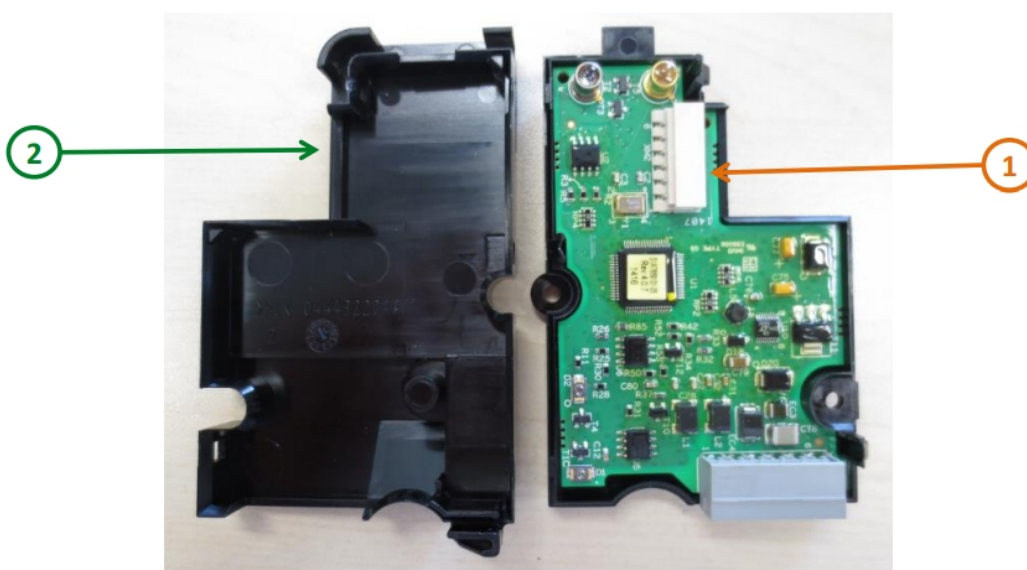
DANGER

HAZARD OF ELECTRIC SHOCK, EXPLOSION OR ARC FLASH

- Apply appropriate personal protective equipment (PPE) and follow safe electrical work practices. See NFPA 70E, CSA 2462 or local equivalent.
 - This equipment must only be installed and serviced by qualified electrical personnel.
 - Turn off all power supplying this equipment before working on or inside equipment. Lock the switchgear in the isolated position.
 - Always use a properly rated voltage sensing device to confirm power is off.
 - Install safety barners and display a danger sign.
 - Replace all devices, doors, and covers before turning on power to this equipment.
- Failure to follow these instructions will result in death or serious injury.



End of Life Instructions



To be dismantled	Number on drawing	Component / Material	Weight (ing)	Comment
To be depolluted	1	Electronic Board (Communication) > 10cm ²	21.33 g	VEGA PCBA
Recommendation	2	Plastic parts to be dismantled	19.33 g	PC, PA 6, EPDM



Product description

Date of information release	Schneider Electric Industries SAS
Accessories	Schneider Electric
Product function	<p>The BCM ULP circuit breaker communication module is independent of the trip unit, and it communicates two-way with the modbus network. BCM ULP module is installed behind the MicroLogic trip unit for Master Pact NT/NW, ComPact NS, and PowerPact P- and R-frame circuit breakers and is wired to the microswitches:</p> <ul style="list-style-type: none"> • For manually operated devices: <ol style="list-style-type: none"> 1.OF, SDE, and SD contacts • For electrically operated devices: <ol style="list-style-type: none"> 1.OF, SDE, PF, and CH contacts 2.Connection kit to the MX1 and XF communicating voltage releases <p>The representative product used for the analysis is MODBUS INTERNAL COM MODULE (ref. 33106) and Breaker ULP cord L=1.3m (ref. LV 434196).</p>
Product reference	33106, LV434196
Total representative product mass	69.4 g
Representative product dimensions	87.2 mm x 56.4 mm x 18 mm
Manufacturer identification	MODBUS INTERNAL COM MODULE is connected to the ULP devices via the MEDIUM BREAKER ULP CORD. Ulp cord available in three lengths 0.35 m (LV434195), 1.3 m (LV434196), and 3 m (LV434197), 33119 – Terminal Block
Brand name	Nov-23



Additional information

Legal information	This product family is in the scope of European Union directive 2012/19/EU on Waste Electrical and Electronic Equipment (WEEE). The product family must be disposed according to the legislation of the country. This document is intended for use by end of life recyclers or treatment facilities. It provides the basic information to assure an appropriate end of life treatment for the components and materials of the product.	
In case of special transportation: transportation method	NO	
Recyclability potential	4%	Recyclability rate has been calculated based on REEECY'L AB tool developed by Ecosystem, for components/materials not covered by the tool, data from the "ECO'DEEE recyclability and recoverability calculation method" was taken. If no data was found a conservative assumption was used (0% recyclability).

www.se.com ENVEOLI2306024_V1

RCS Nanterre 954 503 439

Capital social 896 313 776 €

Country Customer Care Center

<http://www.schneider-electric.com/contact>

35, rue Joseph Monier

CS 30323

F- 92500 Rueil Malmaison Cedex


Schneider Electric Industries SAS

Published by Schneider Electric

© 2023 – Schneider Electric – All rights reserved

11/2023

Documents / Resources

	<p>Schneider Electric LV434196 Modbus Internal Com Module [pdf] Instructions LV434196 Modbus Internal Com Module, LV434196, Modbus Internal Com Module, Internal Com Module, Com Module</p>
---	---

References

- [Our offices around the world | Schneider Electric Global](#)
- [Schneider Electric Global | Global Specialist in Energy Management and Automation](#)
- [Schneider Electric Global | Global Specialist in Energy Management and Automation](#)
- [User Manual](#)