



Schneider Electric LC2D A Series TeSys Deca Reversing Contactor Instruction Manual

[Home](#) » [Schneider Electric](#) » Schneider Electric LC2D A Series TeSys Deca Reversing Contactor Instruction Manual 



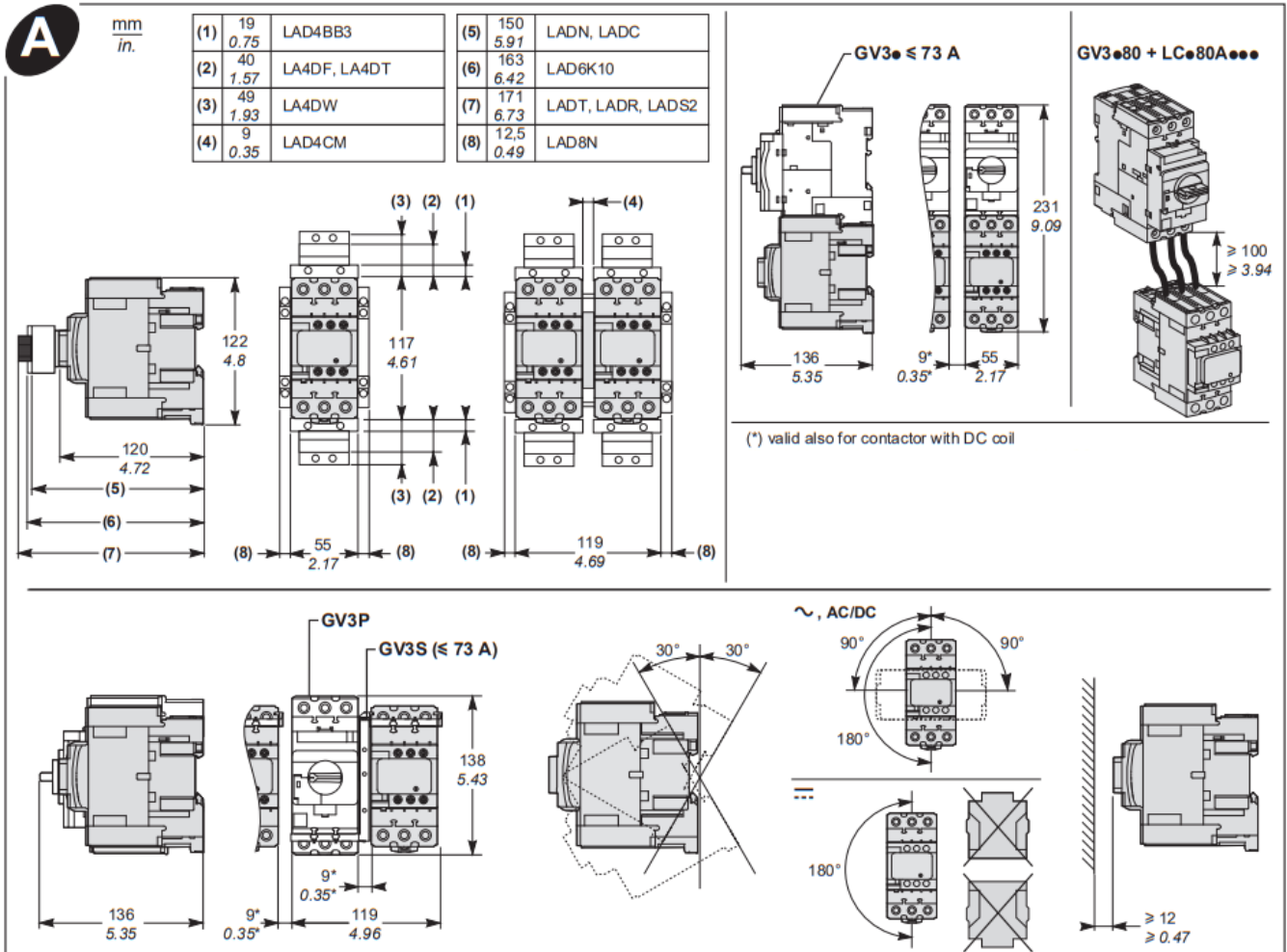
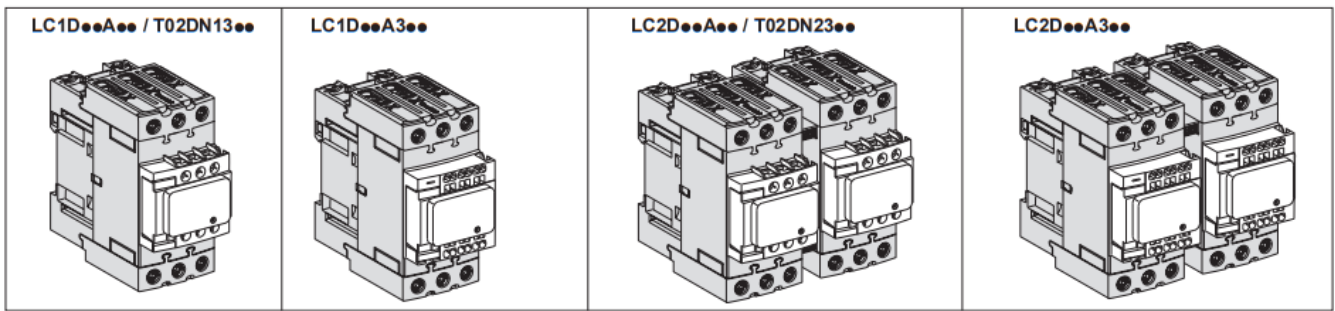
Electric LC2D A Series TeSys Deca Reversing Contactor Instruction Manual

LC1DppApp / LC1DppA3pp / T02DN13pp
LC2DppApp / LC2DppA3pp / T02DN23pp

Contents

- [1 LC2D A Series TeSys Deca Reversing Contactor](#)
- [2 Documents / Resources](#)
 - [2.1 References](#)
- [3 Related Posts](#)

LC2D A Series TeSys Deca Reversing Contactor

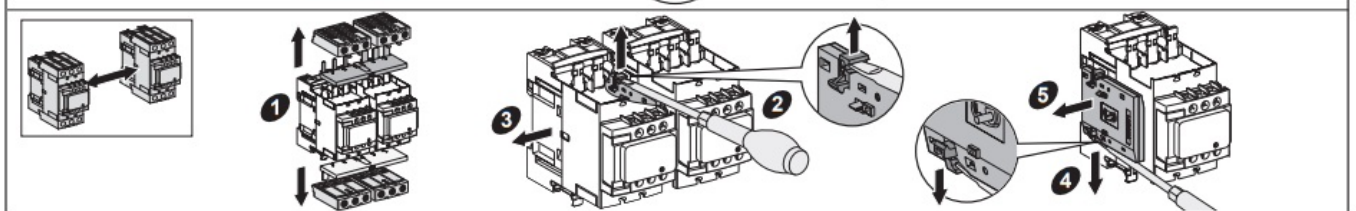
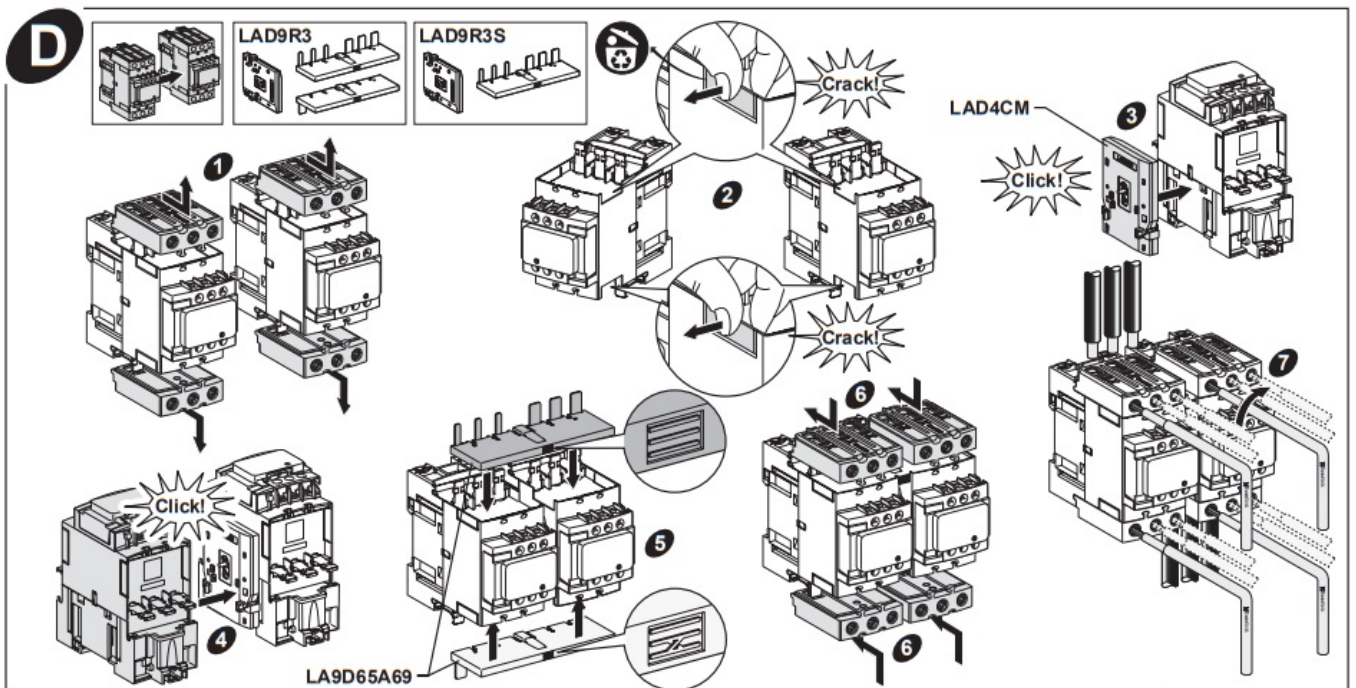
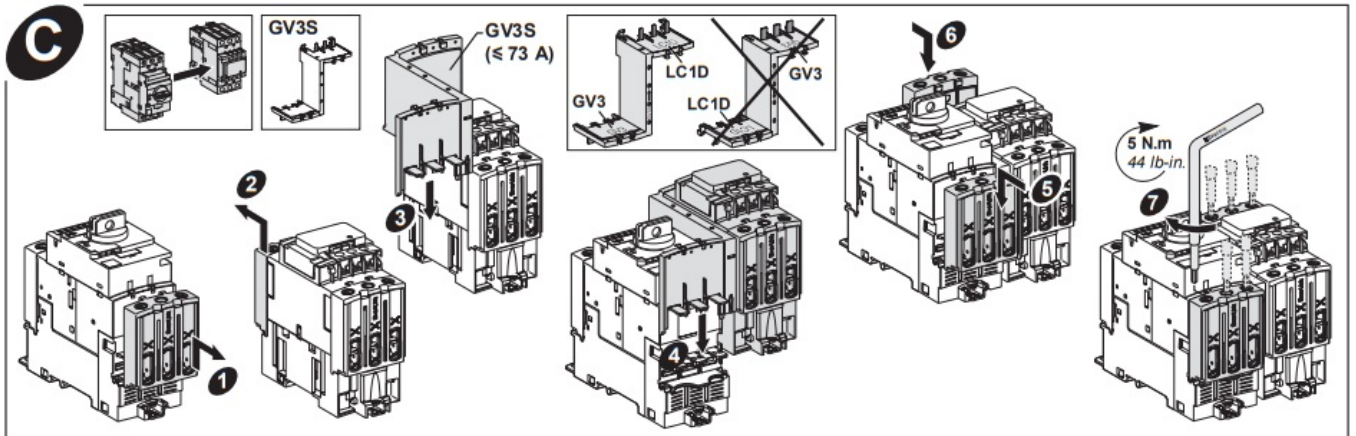
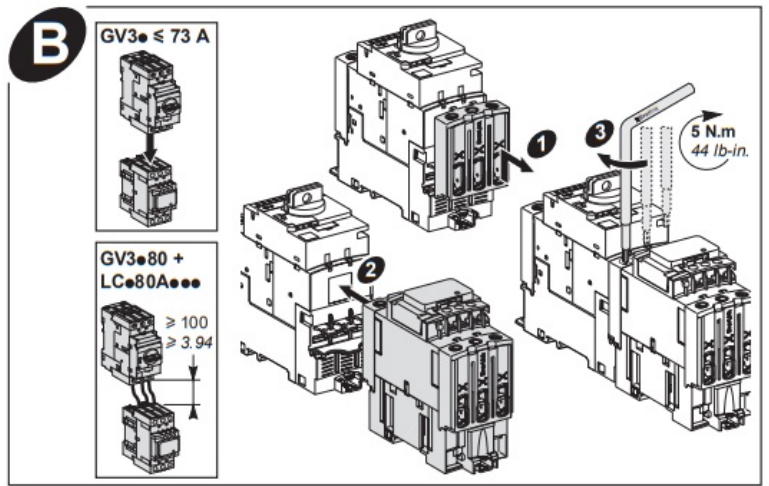
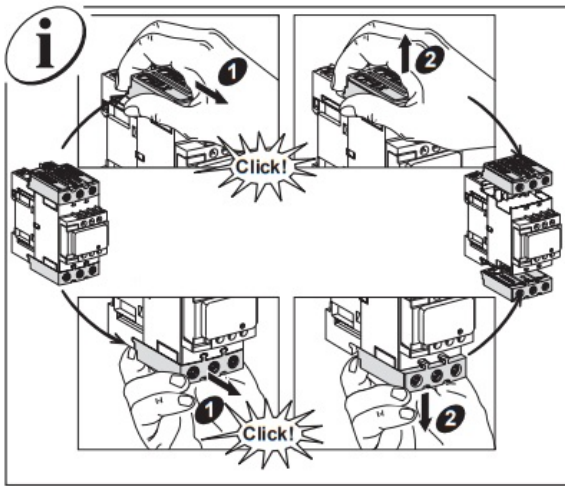


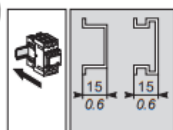
DANGER

HAZARD OF ELECTRIC SHOCK, EXPLOSION OR ARC FLASH

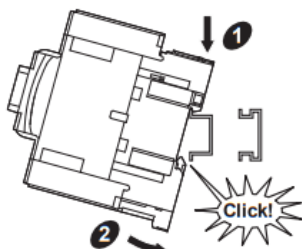
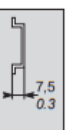
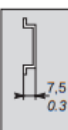
Disconnect all power before servicing equipment.

Failure to follow these instructions will result in death or serious injury.

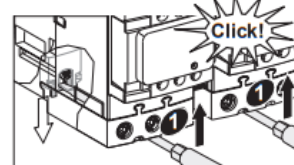
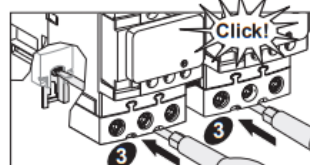
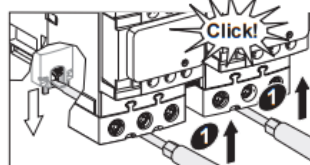
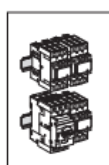
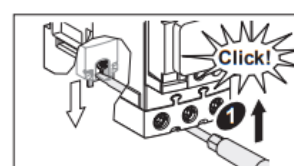
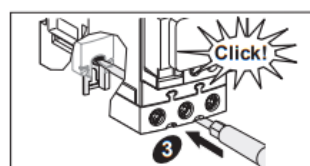
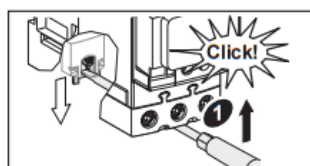
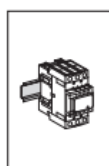
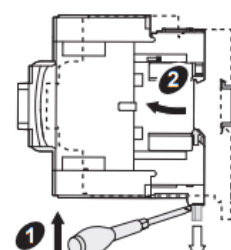
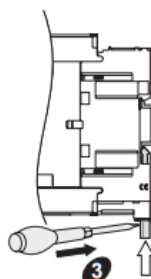
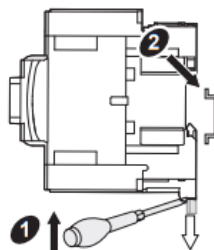
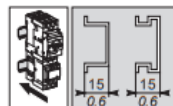


Emm
in.

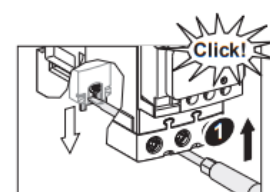
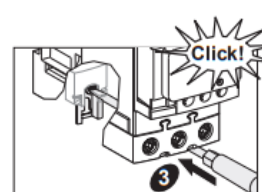
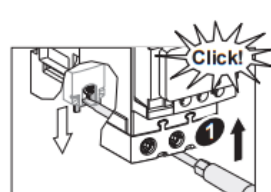
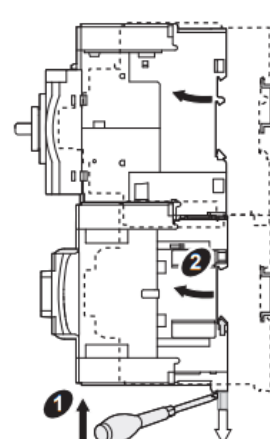
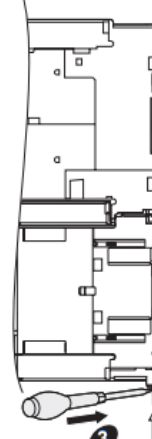
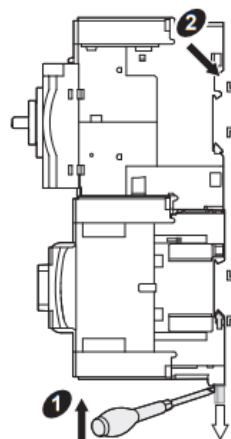
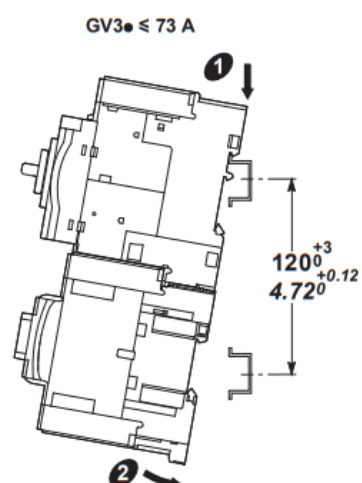
Rail 35 mm → EN 50022, NFC 63015

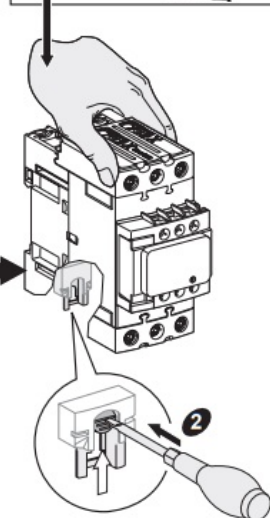
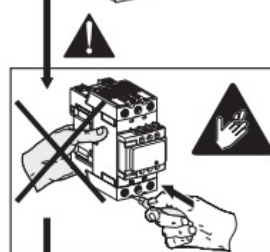
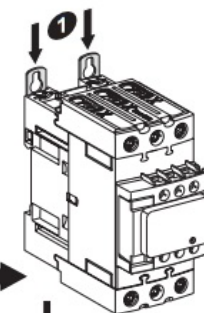
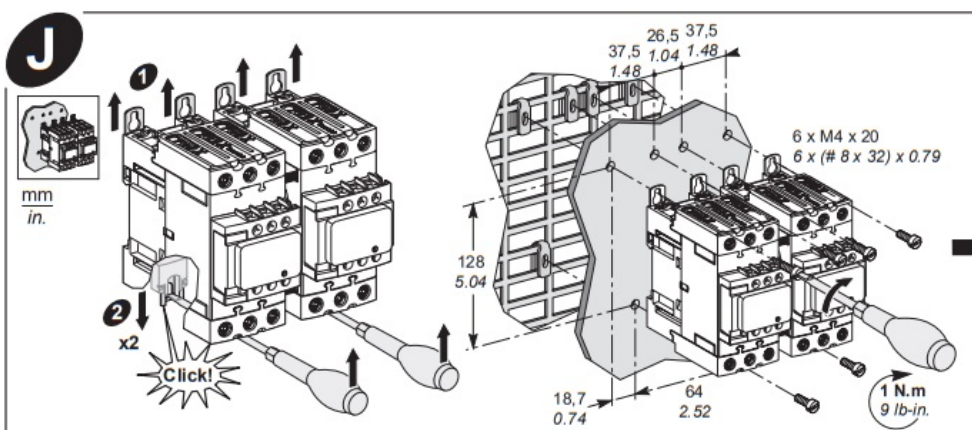
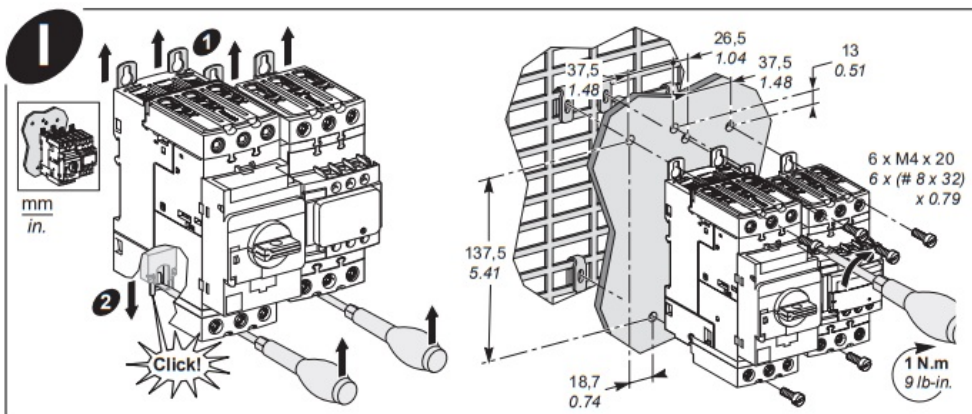
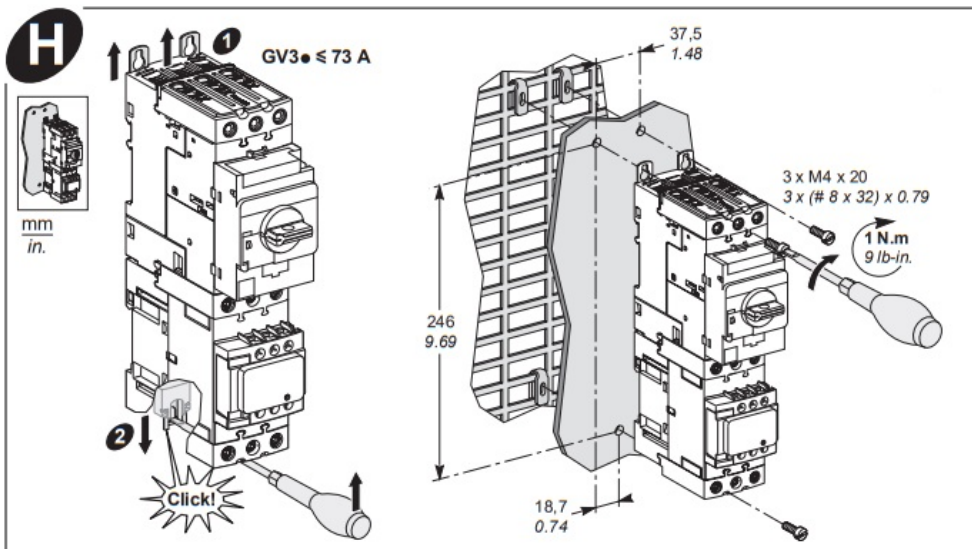
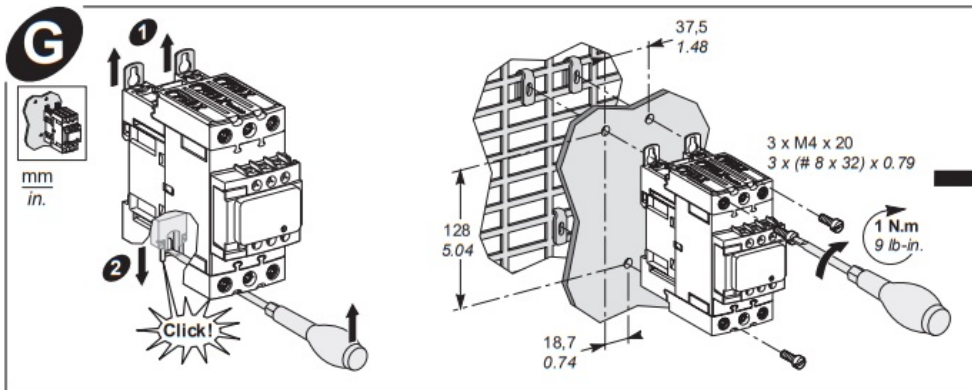


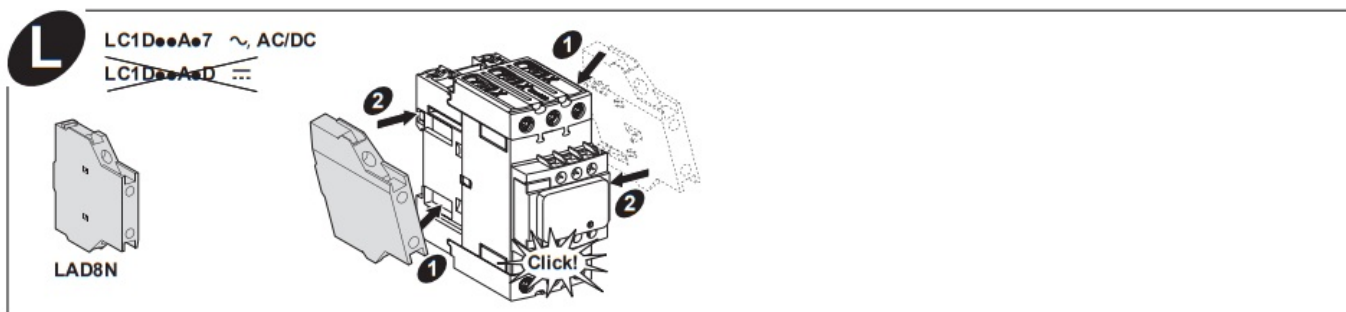
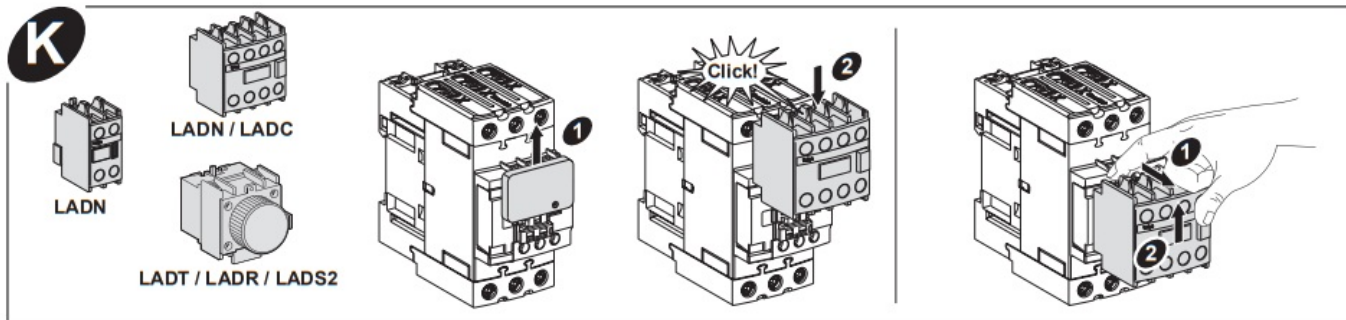
In case of vibration above 3gn on contactor with electronic coil and direct mounting with LRD, it is recommended to mount the devices by screws on metal plate.

**F**mm
in.

Rail 35 mm → EN 50022, NFC 63015



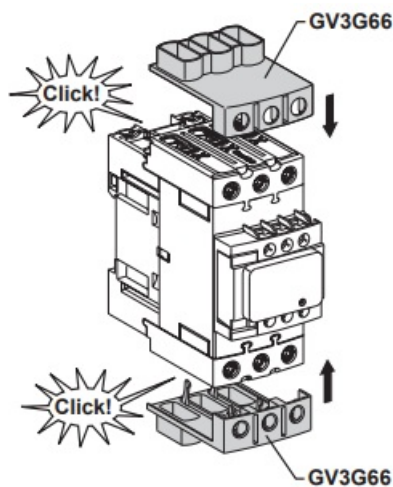




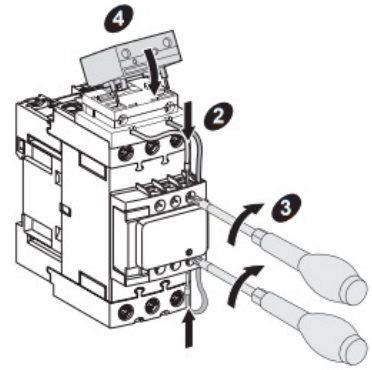
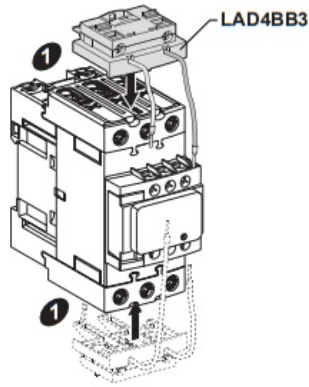
WARNING

HAZARD OF FIRE OR ELECTRIC SHOCK

On contactors connected to a feeder circuit, it is mandatory to install large spacing adapters GV3G66 on top and bottom connections of the contactor to respect UL and CSA requirements in North America. Failure to follow these instructions can result in death, serious injury, or equipment damage.



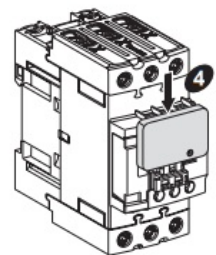
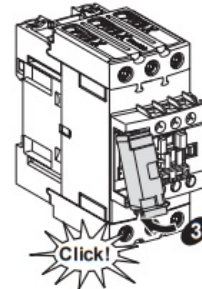
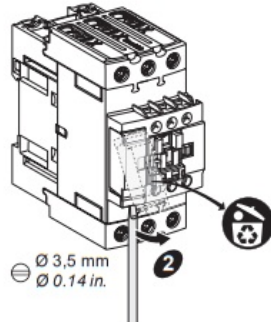
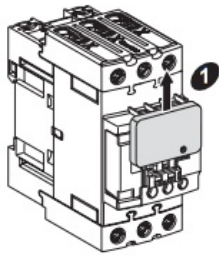
N



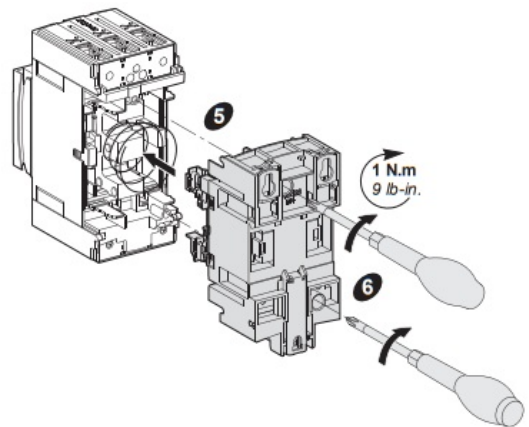
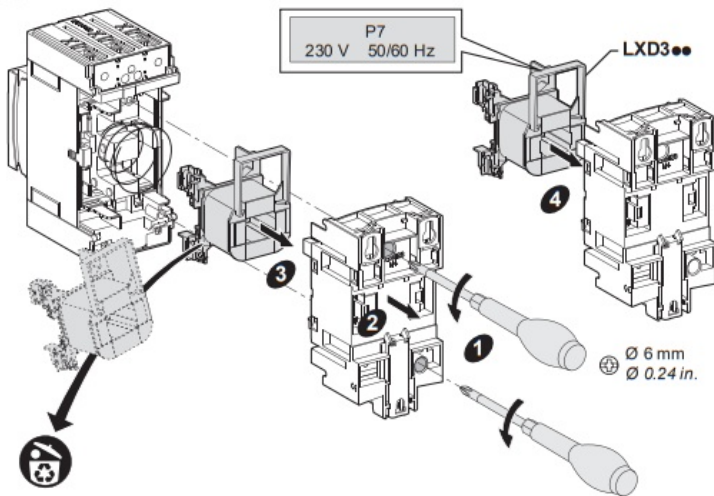
O



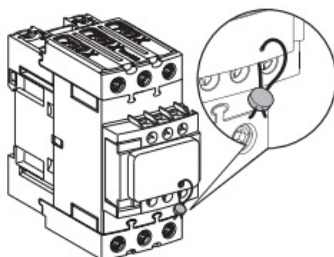
LAD4RC3●
LAD4D3U
LAD4V3●
LAD4T3●

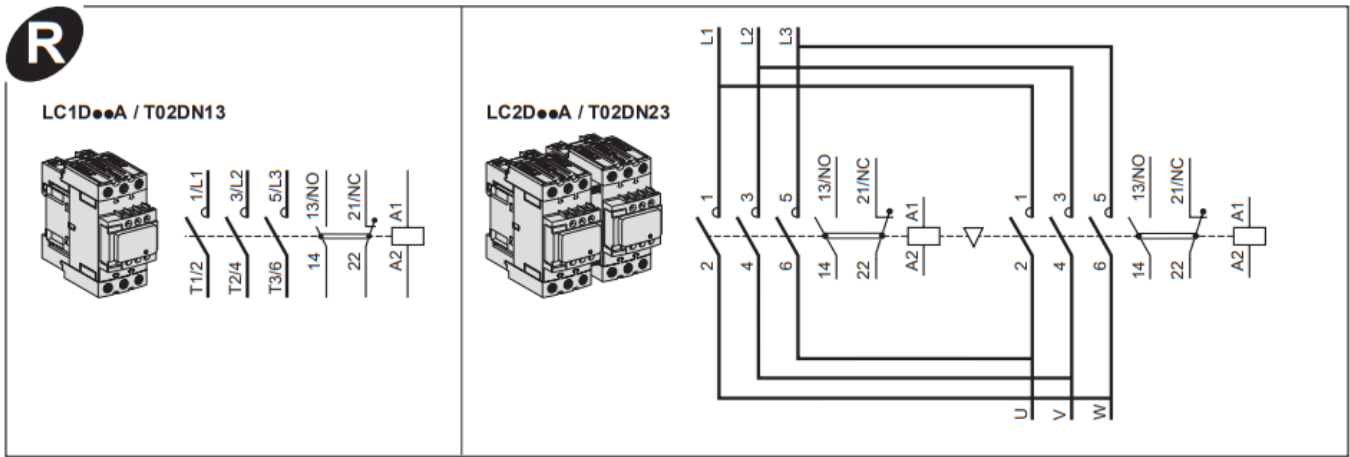


P



Q





S

LADALLEN4

LC1D●●A / T02DN13 LC2D●●A / T02DN23									
16 mm	1...25 mm ²	2 x 1...25 mm ²						5 N.m	 4 mm 0.16 in
16 mm	35 mm ²	1 x 1...25 mm ² + 1 x 35 mm ²						8 N.m	
0.63 in.	AWG 16...2	1 x AWG 16...4 + 1 x AWG 16...2						70 lb-in	

T

LC1D●●A / T02DN13 LC2D●●A / T02DN23									
10 mm	1...4 mm ²		1...2,5 mm ²		1,7 N.m		 PH2		
0.4 in.	AWG 16...12		AWG 16...14		15 lb-in				

U

LC1D●●A3 LC2D●●A3									
0,75...2,5 mm ²	Ø 3,5 mm								
AWG 20...12	0.14 in.								

AC/DC:

- use of this product in EMC environment B may require mitigation measures to avoid unwanted disturbance.
- full open AC at 10%Us.



HAZARD OF FIRE OR ELECTRIC SHOCK (FOR CONTACTOR WITH UL HI-FAULT SHORT CIRCUIT CURRENT

RATINGS ONLY)

- The opening of the branch-circuit protective device may be an indication that a fault current has been interrupted.
- To reduce the hazard of fire or electric shock, current-carrying parts and the other components of the controller should be examined and replaced if damaged.

Failure to follow these instructions can result in death, serious injury, or equipment damage.

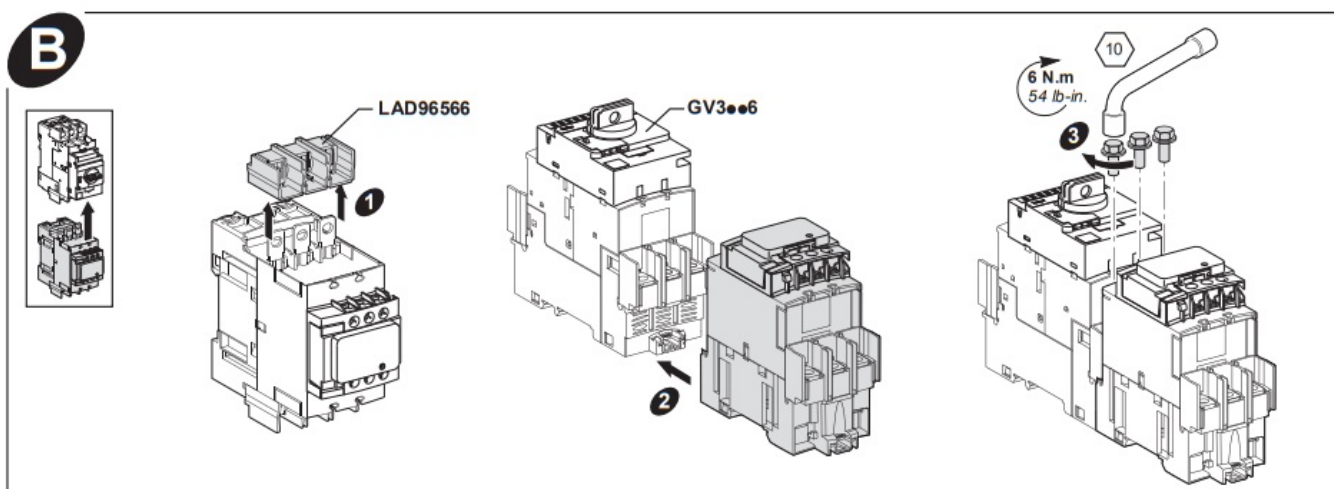
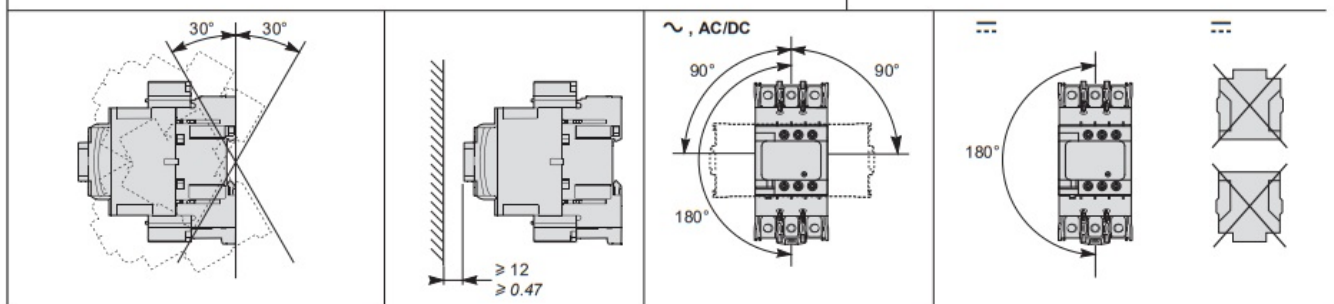
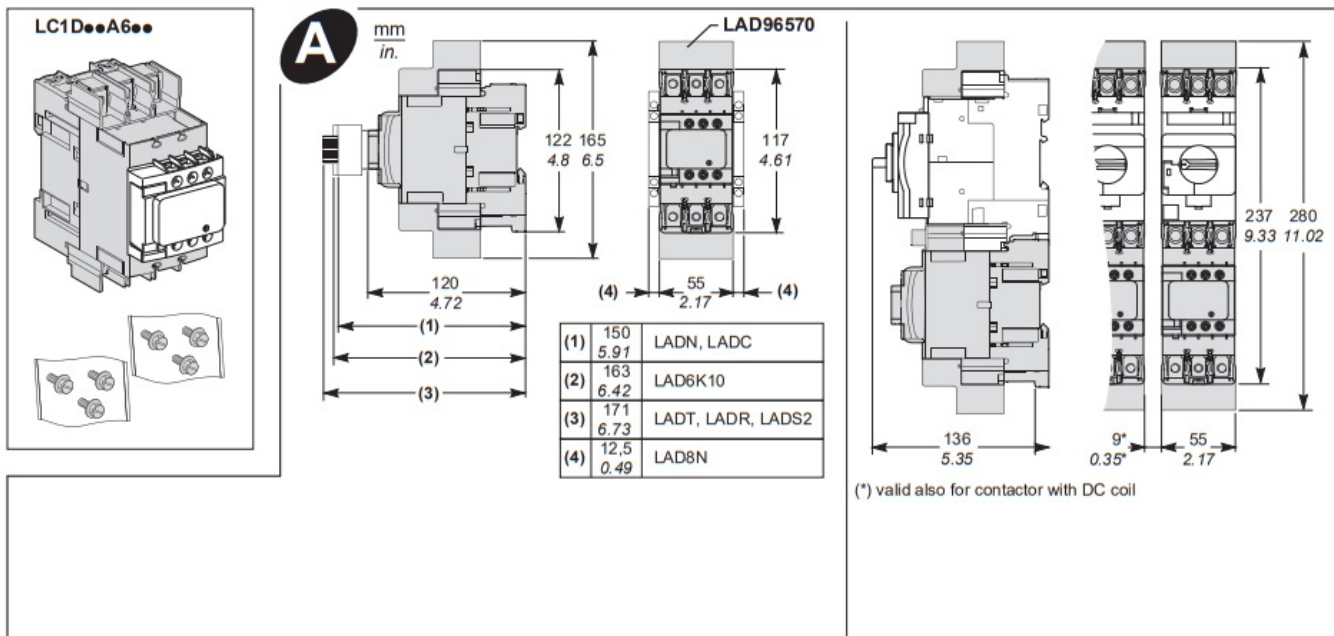
Additional ratings	Lighting Tungsten	Lighting Ballast	Definite Purpose ratings, 3Phase, Load wiring: breaking all lines				Elevator Duty HP ratings (except .D and .W DC coil)						High-Fault SCCR Class J F use	High-Fault SCCR with CB	
Device	600 V	600 V	FL A	LRA			1Ph 120 V	1Ph 240 V	3Ph 200 V	3Ph 230 V	3Ph 480 V	3Ph 600 V	600 V	480 V	600 V
LC1D4 0A	60 A	60 A	40 A	240 A	200 A	160 A	—	5hp	10hp	10hp	—	—	100 kA	100 kA	50 kA
LC1D5 0A	70 A	70 A	50 A	300 A	250 A	200 A	3hp	7.5 hp	15hp	15hp	25hp*	30hp*	100 kA	100 kA	50 kA
LC1D5 OANR,	—	—	—	—	—	—	—	—	—	—	—	—	100 kA	100 kA	50 kA
LC1D6 5A/80A	70 A	80 A		390 A	325 A	208 A	3hr	10hp*	15hp*	20hp*	25hp*	30hp*	100 kA	100 kA	50 kA

Refer to information on device label when ordering replacement parts.

The product's manufacture date is coded PPYYWWD, where:

- PP: plant code
- YY: year of manufacture
- WW: week of manufacture
- (D: weekday of manufacture (Monday = 1))

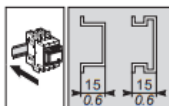
LC1D A6



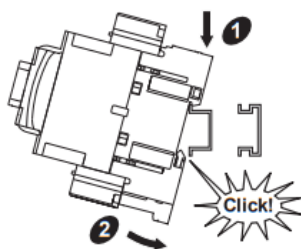
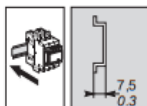
HAZARD OF ELECTRIC SHOCK, EXPLOSION OR ARC FLASH

Disconnect all power before servicing equipment.

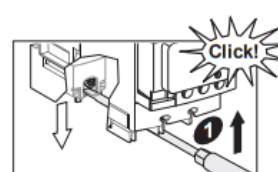
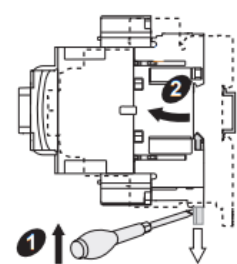
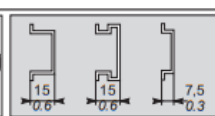
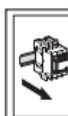
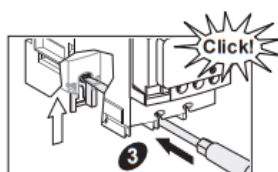
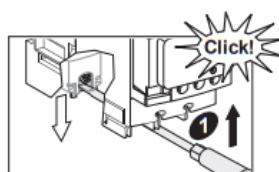
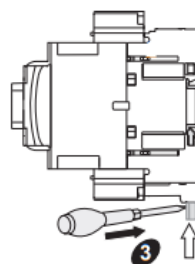
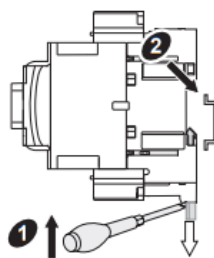
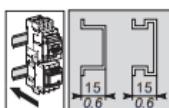
Failure to follow these instructions will result in death or serious injury.

Cmm
in.

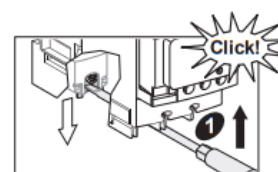
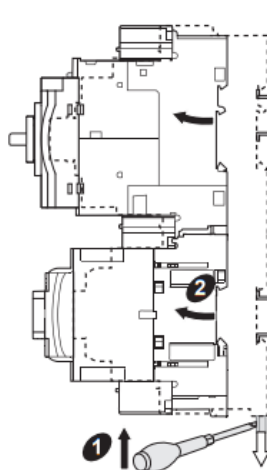
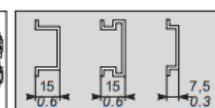
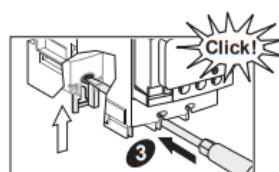
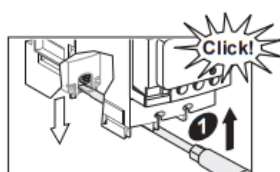
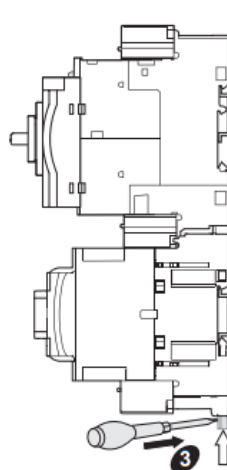
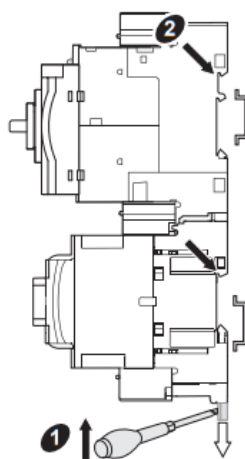
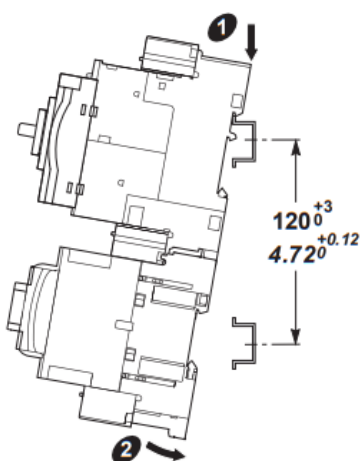
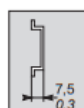
Rail 35 mm → EN 50022, NFC 63015

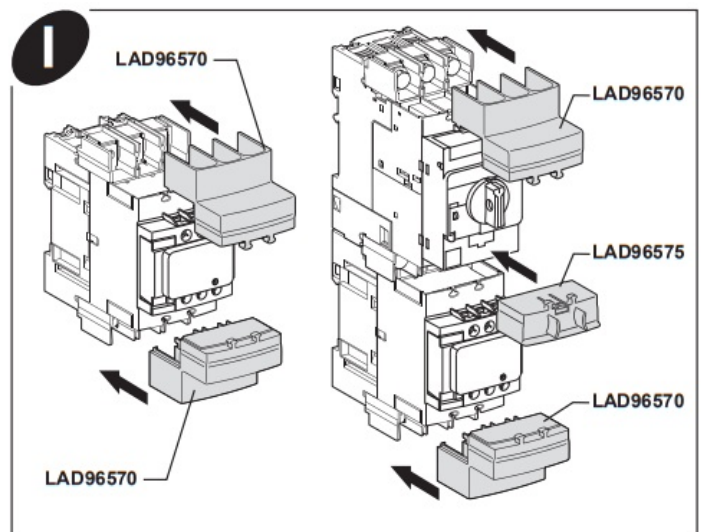
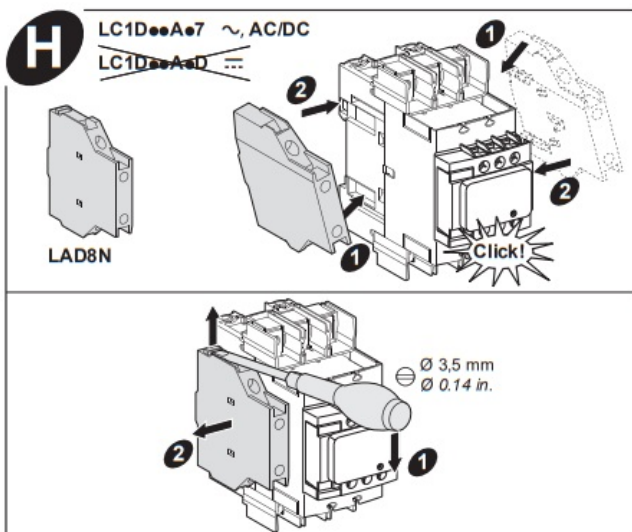
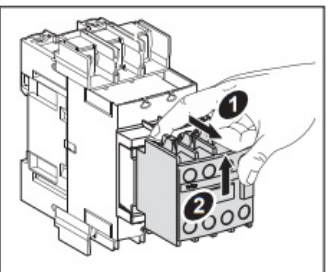
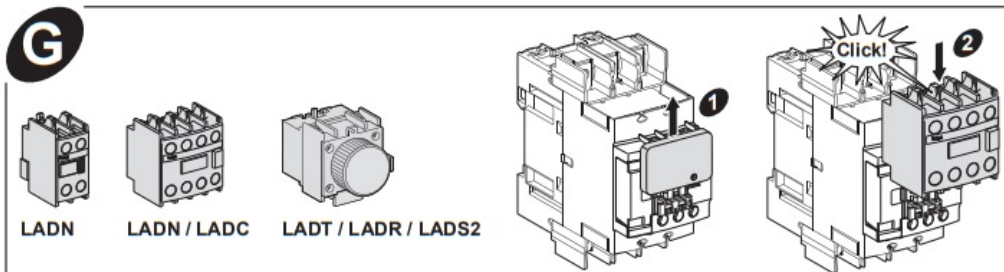
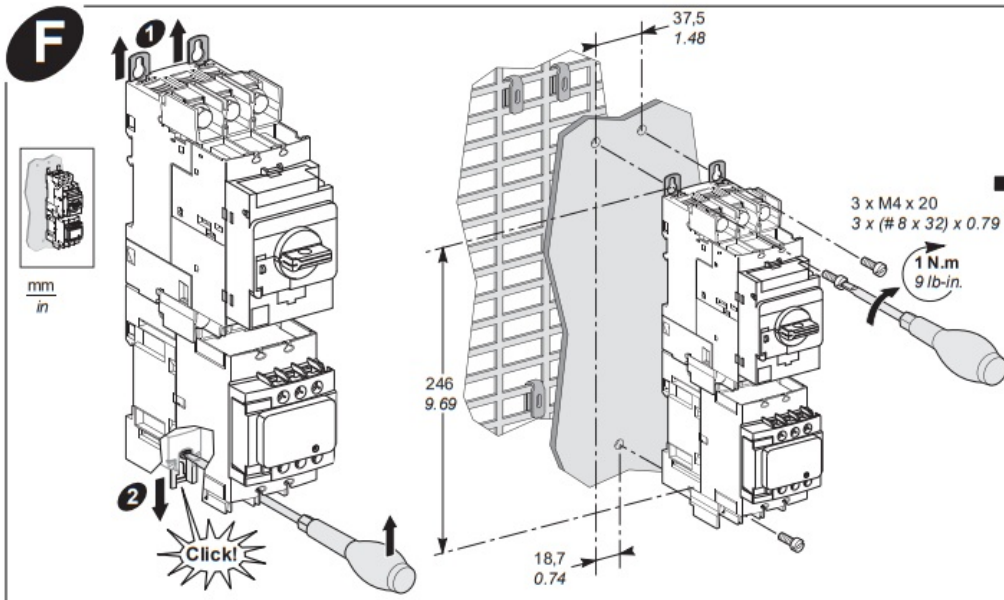
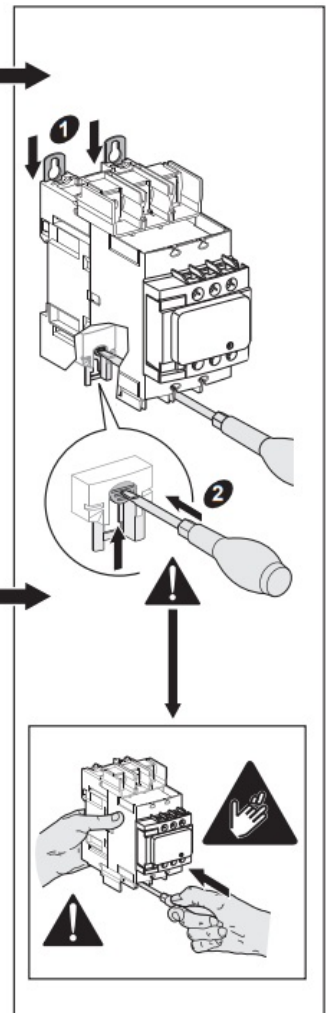
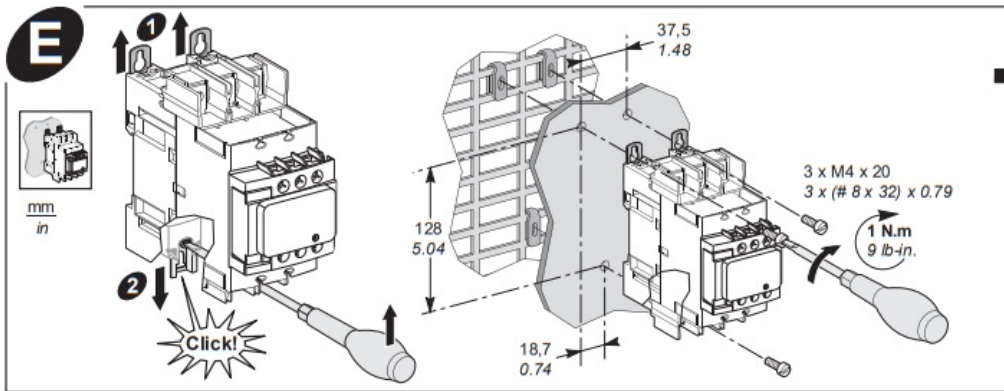


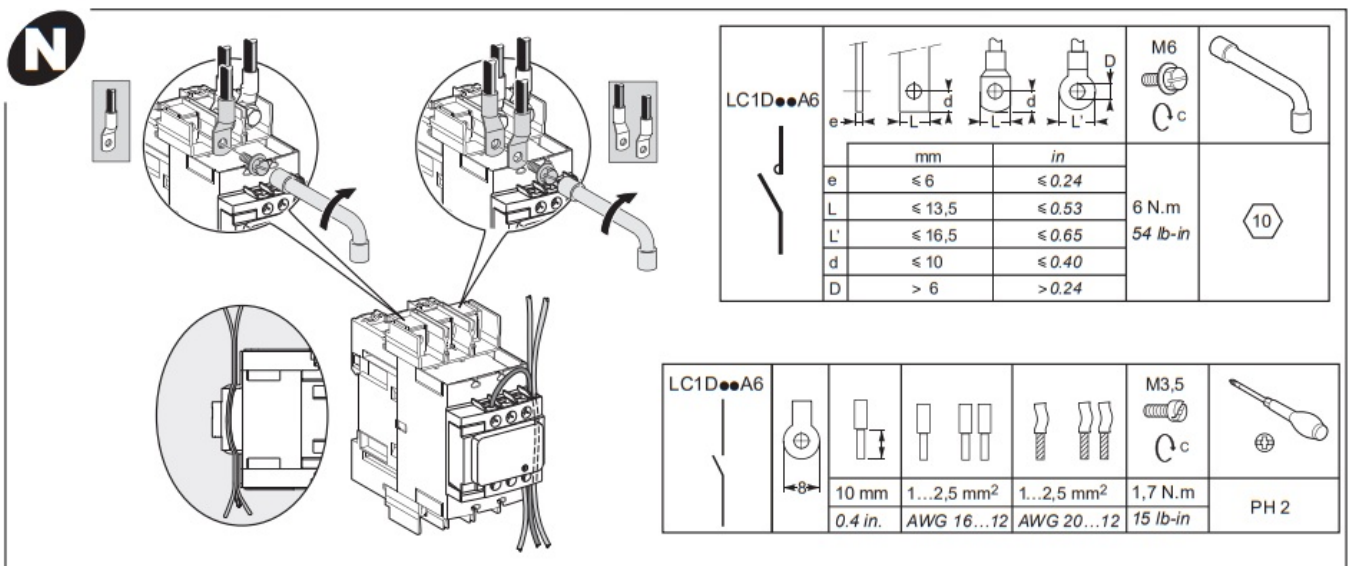
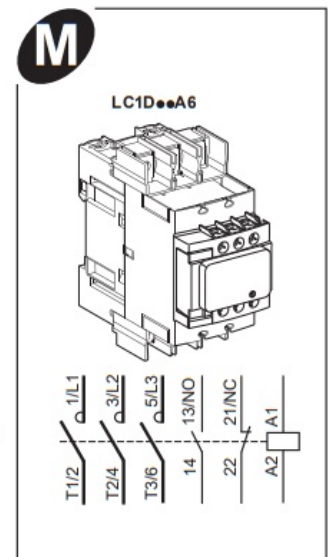
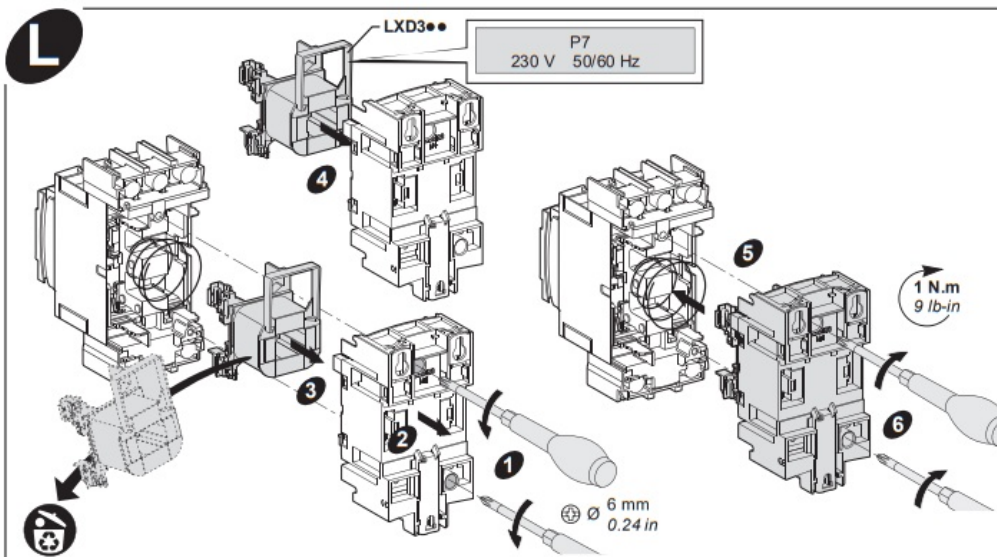
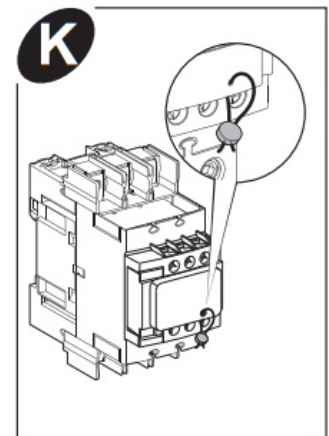
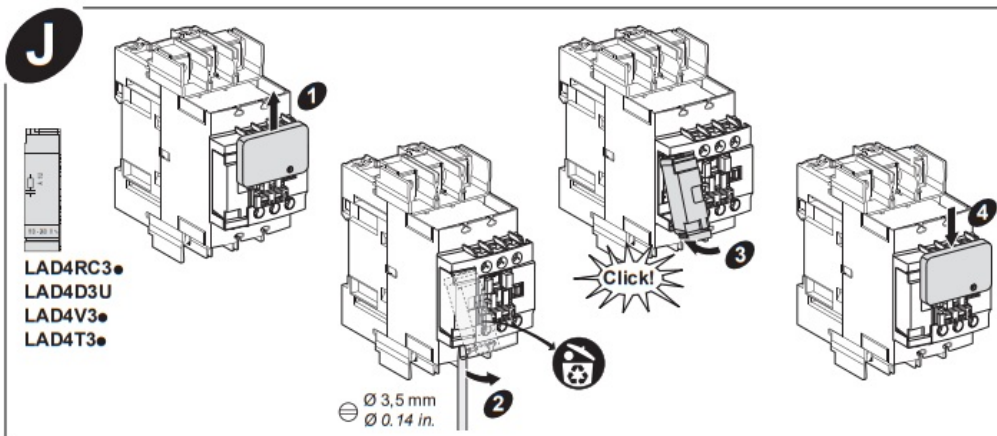
In case of vibration above 3gn on contactor with electronic coil and direct mounting with LRD, it is recommended to mount the devices by screws on metal plate.

**D**mm
in.

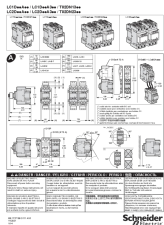
Rail 35 mm → EN 50022, NFC 63015







Schneider Electric Industries SAS
35, rue Joseph Monier
CS 30323
F – 92506 Rueil Malmaison Cedex
www.se.com



[Schneider Electric LC2D A Series TeSys Deca Reversing Contactor](#) [pdf] Instruction Manual
LC2D A Series, TeSys Deca Reversing Contactor, LC2D A Series TeSys Deca Reversing Contactor, Reversing Contactor, Contactor

References

- [Schneider Electric Global | Global Specialist in Energy Management and Automation](#)
- [Систэм Электрик - официальный сайт](#)
- [Schneider Electric UK | Energy Management and Automation](#)

Manuals+.