



Schneider Electric GV4ADN01 Direct Mounted Rotary Handle Instructions

[Home](#) » [Schneider Electric](#) » Schneider Electric GV4ADN01 Direct Mounted Rotary Handle Instructions 

Contents

- 1 Schneider Electric GV4ADN01 Direct Mounted Rotary Handle
- 2 Direct Mounted Rotary Handle
- 3 Required for Installation
 - 3.1 Before Working on Equipment
 - 3.2 Dimensions
- 4 Rotary Handle Adaptation
 - 4.1 Activation of Locking in I-On Position
 - 4.2 Activation of Door Interlock in I-On and Trip Position
- 5 Installation
 - 5.1 Device Identification
 - 5.2 Door Cutout
- 6 Operation
 - 6.1 Device Status
 - 6.2 Device Operation
- 7 Locking the Rotary Handle
 - 7.1 Locking in O-Off Position
 - 7.2 Locking in I-On Position
- 8 Locking the Door with Rotary Handle in I-On or Trip Position
- 9 Sealing
- 10 Manufacturing Date
- 11 Documents / Resources
 - 11.1 References
- 12 Related Posts

Schneider

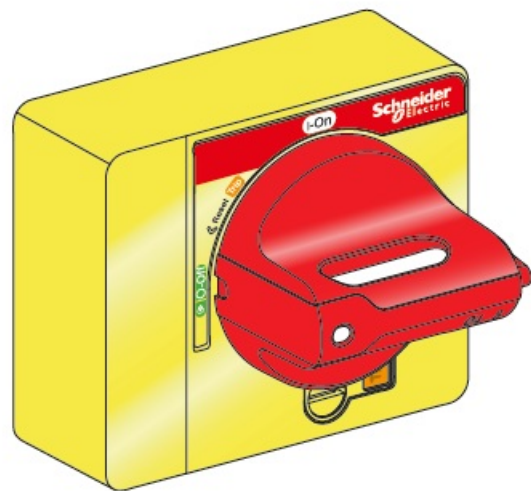
Schneider Electric GV4ADN01 Direct Mounted Rotary Handle



Direct Mounted Rotary Handle



GV4ADN01



GV4ADN02

Retain instruction sheet for future use. Visit our website at www.se.com to download the documents listed above U G(user guides or instruction sheets and other documents).

PLEASE NOTE

- Electrical equipment should be installed, operated, serviced, and maintained only by qualified personnel.
- No responsibility is assumed by Schneider Electric for any consequences arising out of the use of this material.
- All pertinent state, regional, and local safety regulations must be observed when installing and using this product.

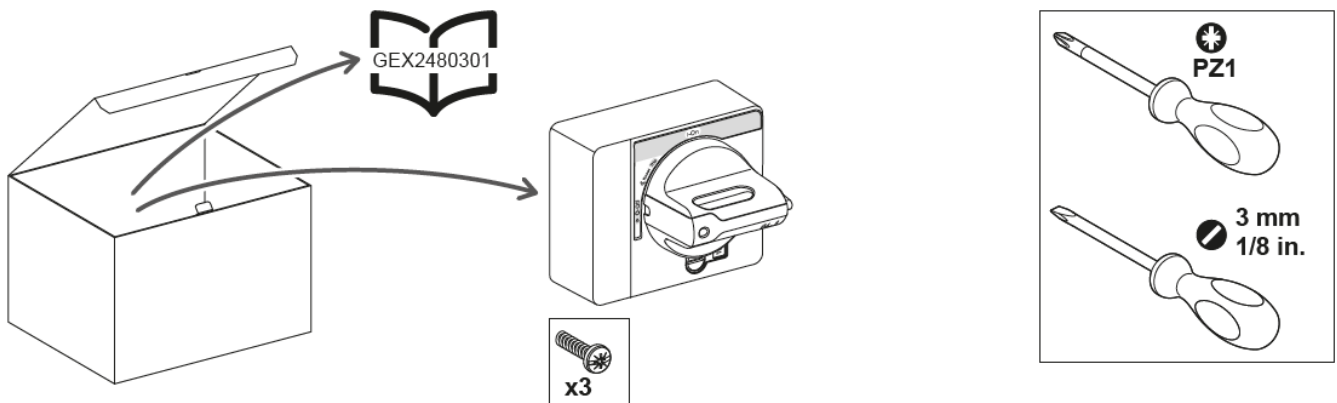
DANGER

HAZARD OF ELECTRIC SHOCK, EXPLOSION OR ARC FLASH

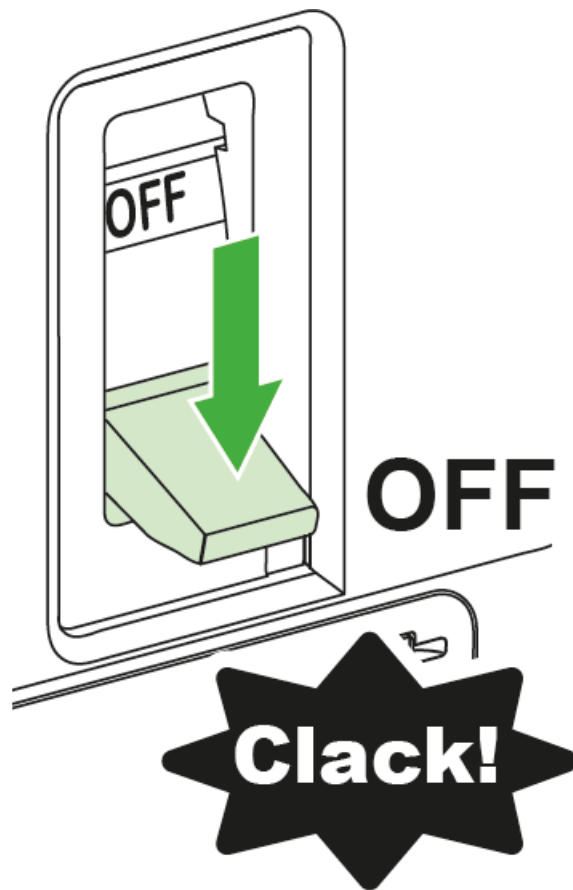
- Apply appropriate personal protective equipment (PPE) and follow safe electrical work practices. See NFPA 70E, CSA Z462, NOM-029-STPS or local equivalent.
- This equipment must only be installed and serviced by qualified electrical personnel. p Turn off all power supplying this equipment before working on or inside equipment.
- Always use a properly rated voltage sensing device to confirm power is off.
- Put back all devices, doors, and covers before turning on power to this equipment. p Beware of potential hazards, and carefully inspect the work area for tools and objects that may have been left inside the equipment.

Failure to follow these instructions will result in death or serious injury.

Required for Installation



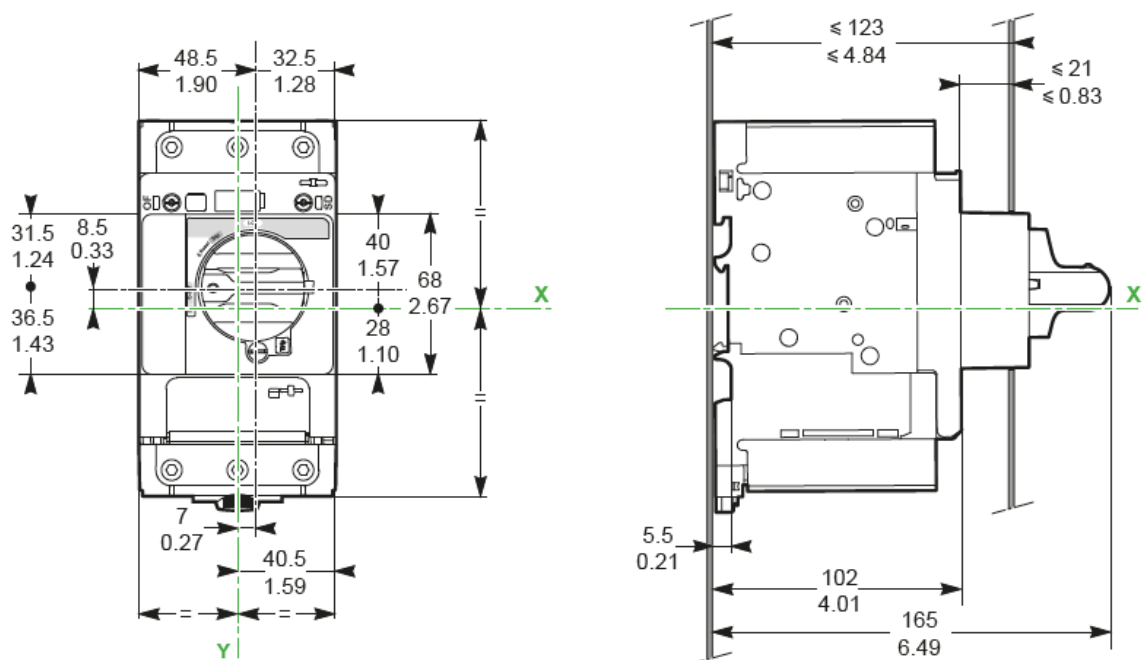
Before Working on Equipment



1. Turn off all power supplying this equipment before working on or inside equipment.
2. Turn off device before installation.
3. Use a properly rated voltage sensing device to confirm power is off.

Dimensions

mm
in.

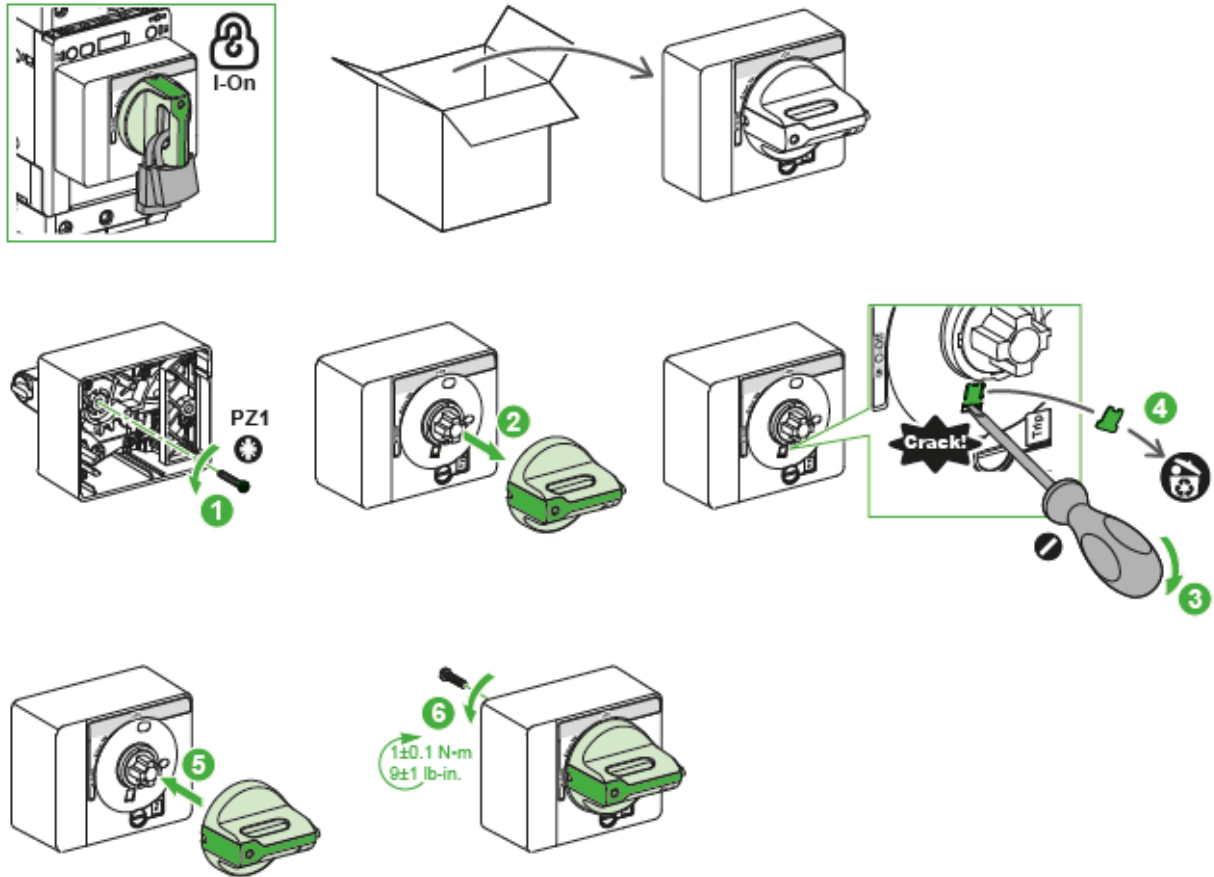


Rotary Handle Adaptation

Activation of Locking in I-On Position

When the rotary handle is locked in I-On position:

- The protection functions are still active and will trip the circuit breaker in case of electrical fault
- The user can trip the circuit breaker in case of emergency with the push-to-trip button.

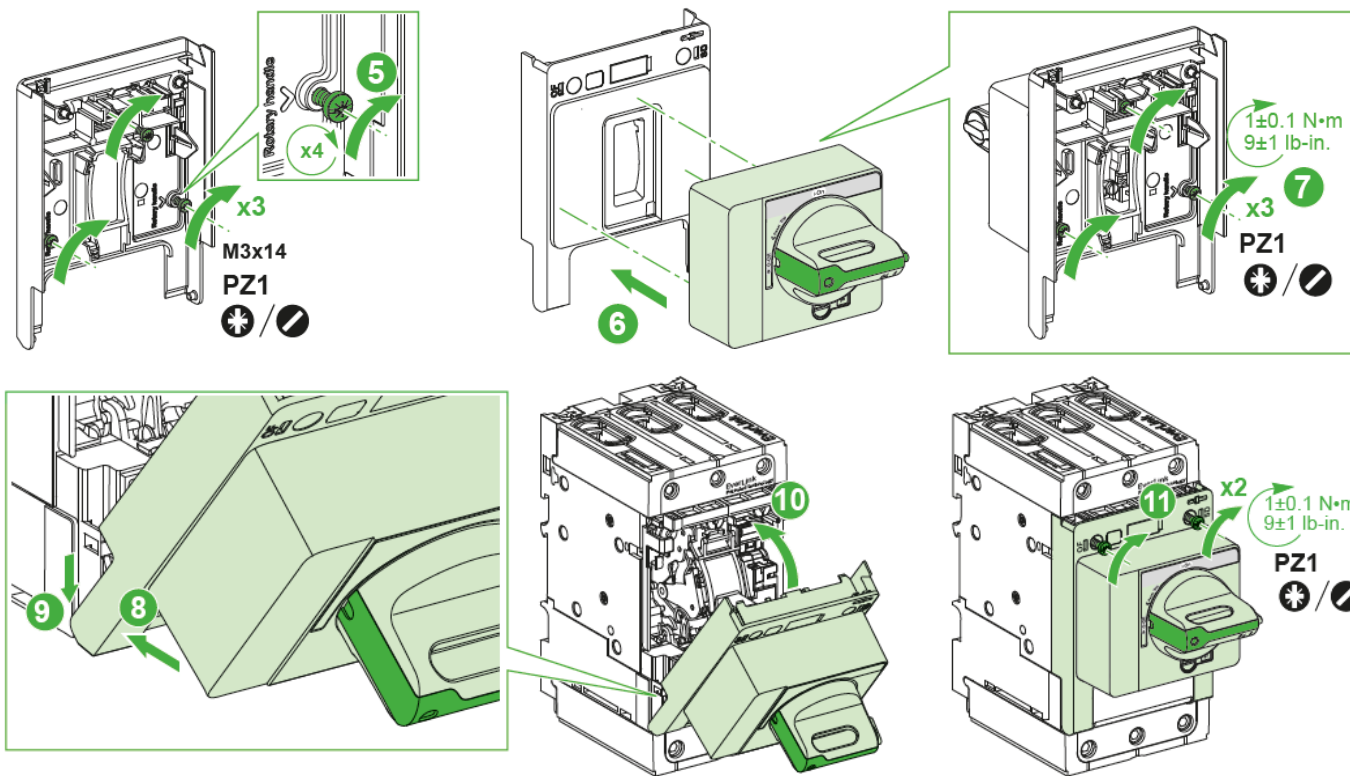


Activation of Door Interlock in I-On and Trip Position

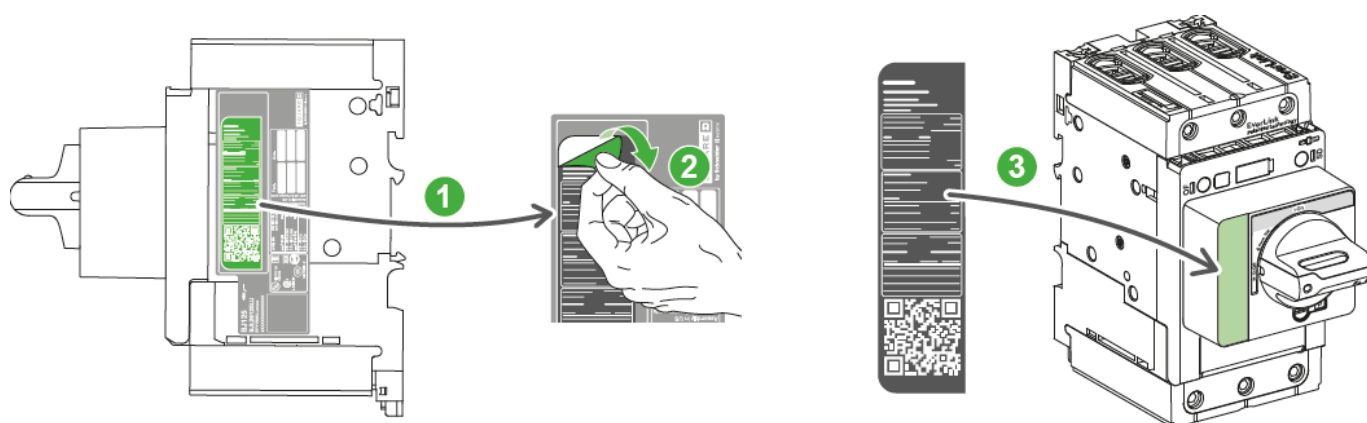
The rotary handle is delivered with the door lock deactivated.

To activate door locking when the rotary handle is in the I-On or Trip position:

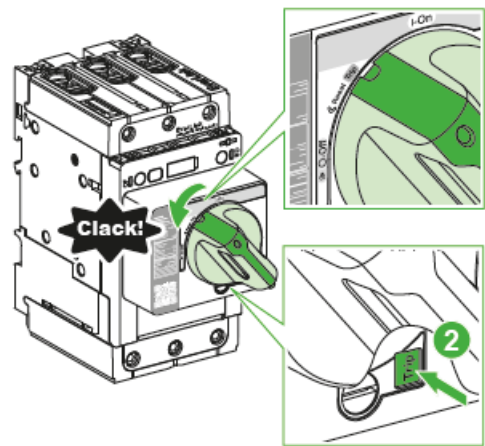
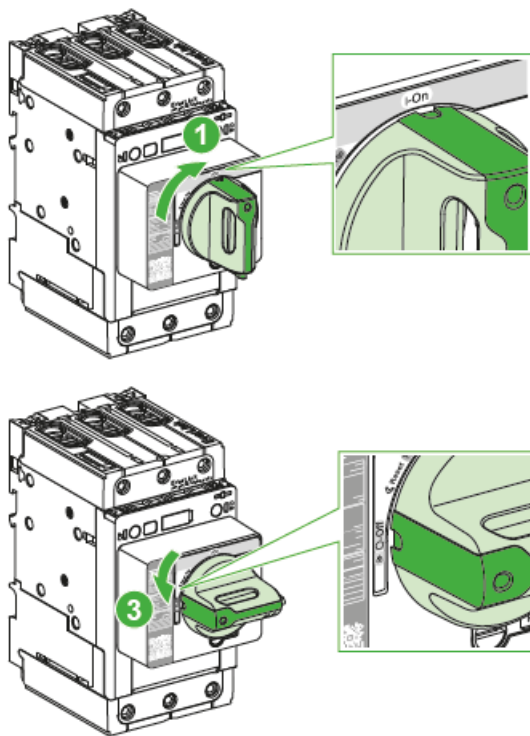
1. Make a cutout in the door for the rotary handle (see section 7).
2. Turn and hold the rotary handle in the I-On position.
3. Unscrew the screw on the right inside the rotary handle casing until the cam turns freely.
4. Check the at the cam moves freely.



Device Identification

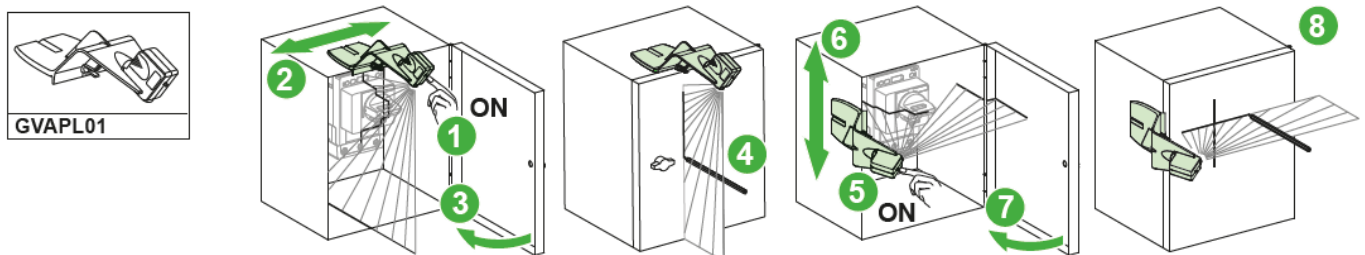


Check

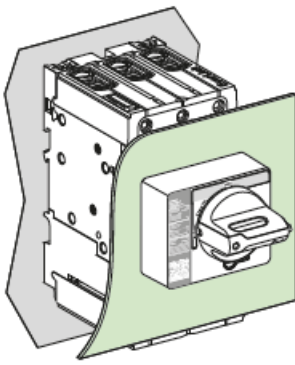


Door Cutout

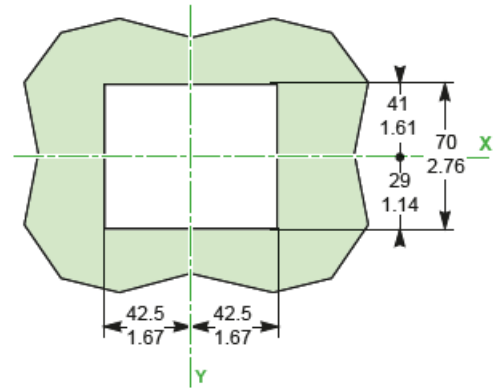
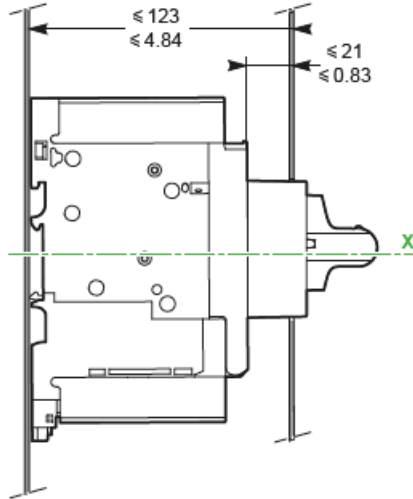
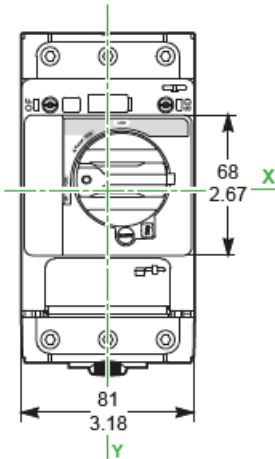
With a door cutout for the rotary handle and the rotary handle adapted as indicated in section 4.2, the rotary handle locks the door when the handle is in the I-On or Trip position.



Use the GVAPL01 laser tool for precise drilling of the cutout on the door.

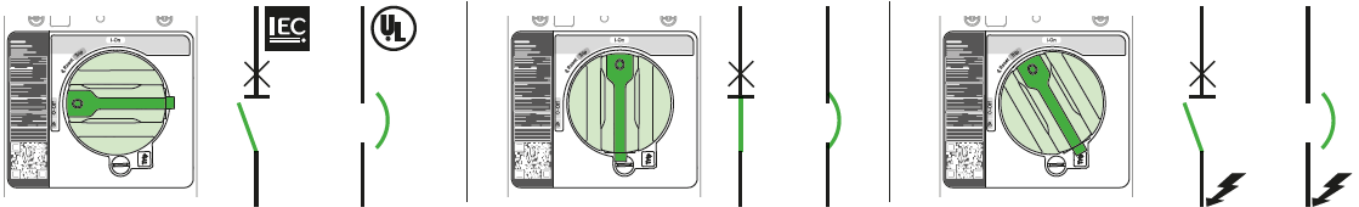


mm
in.



Operation

Device Status



Device Operation

Close Device

Open Device



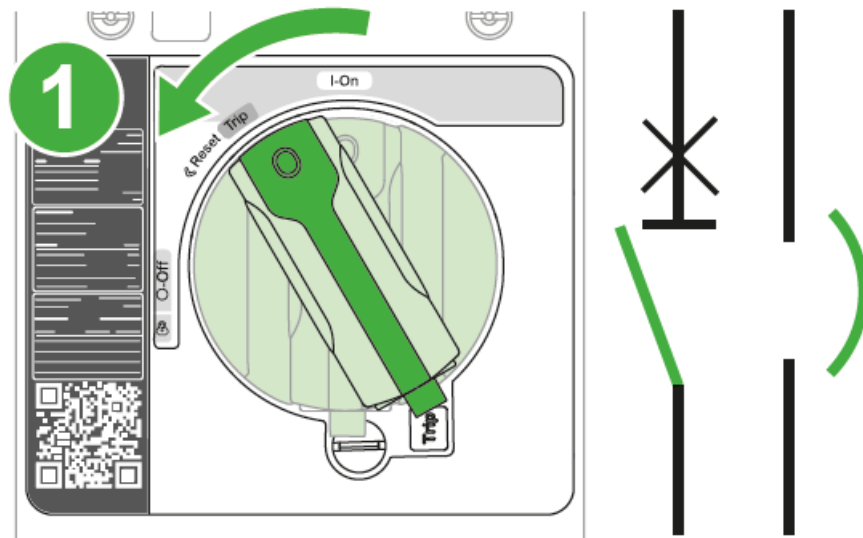
Reset After a Trip

CAUTION

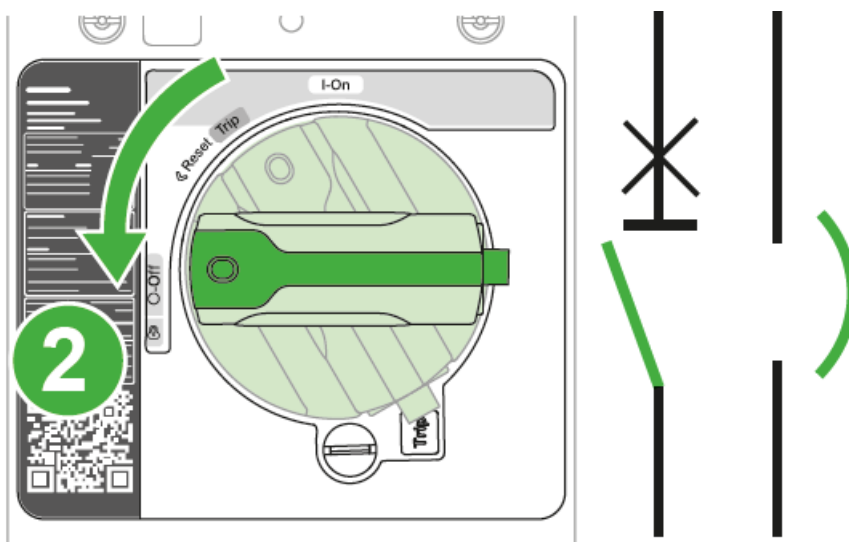
HAZARD OF CLOSING ON ELECTRICAL FAULT

Do not close the device without first inspecting and, if necessary, repairing the downstream electrical equipment. Failure to follow these instructions can result in injury or equipment damage

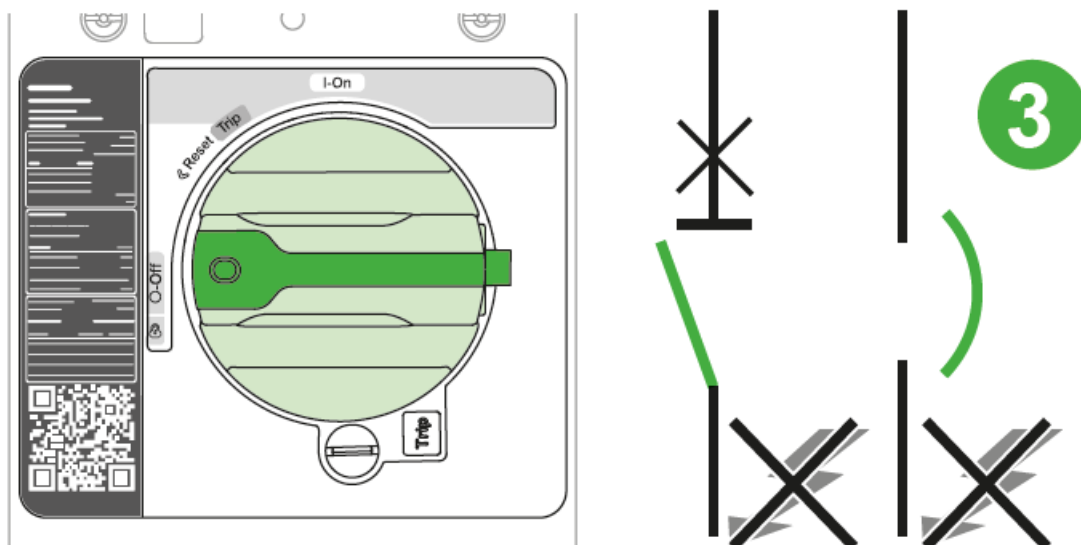
1.



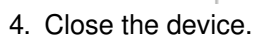
Device has tripped.



2. Reset the device



3. Inspect and repair downstream equipment, using proper safety precautions



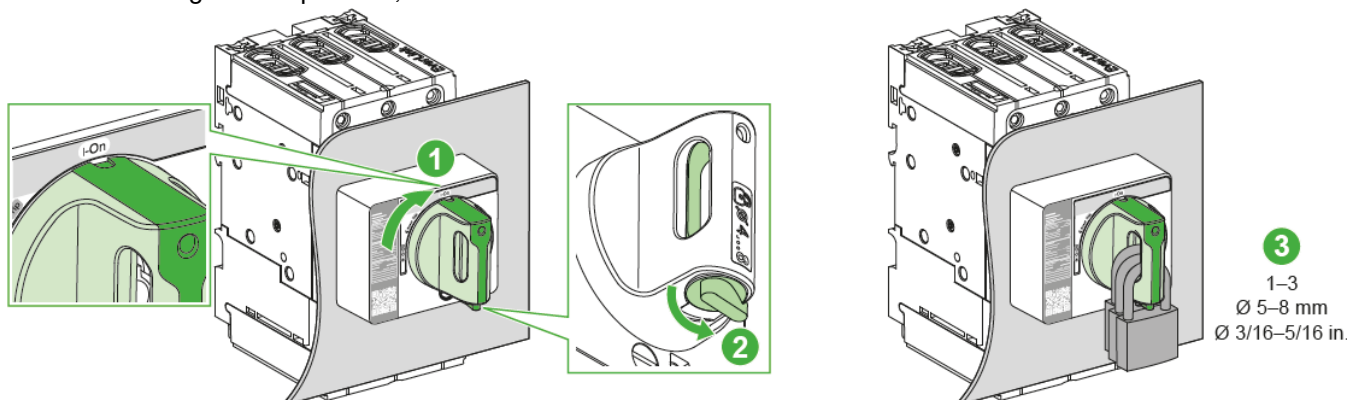
Locking in O-Off Position

HAZARD OF ELECTRIC SHOCK, EXPLOSION OR ARC FLASH

When device rotary handle is locked in O-Off position, always use a properly rated voltage sensing device to confirm power is off before working on equipment. Failure to follow these instructions will result in death or serious injury.



To activate locking in I-On position, consult the section 4.1.



Locking the Door with Rotary Handle in I-On or Trip Position

DANGER

HAZARD OF ELECTRIC SHOCK, EXPLOSION OR ARC FLASH

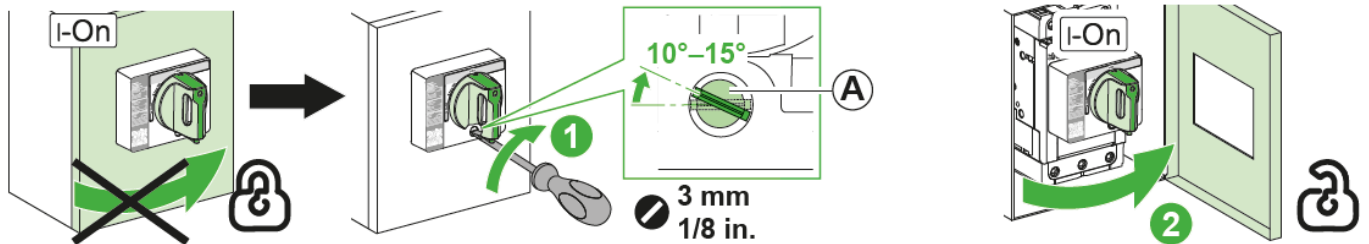
The rotary handle is delivered with the door lock deactivated.

When the door lock is activated, only qualified persons are authorized to disable the door lock.

Failure to follow these instructions will result in death or serious injury.

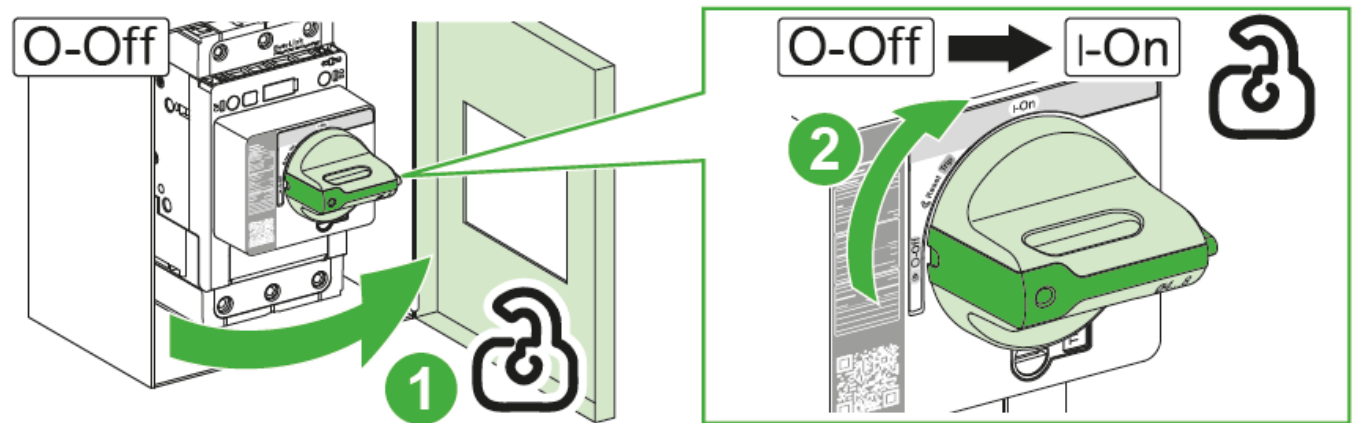
To activate locking in the I-On or Trip position, consult the section 4.2.

To inhibit door locking in the I-On position, turn the screw, situated under the door locking mechanism, 10°–15° clockwise.

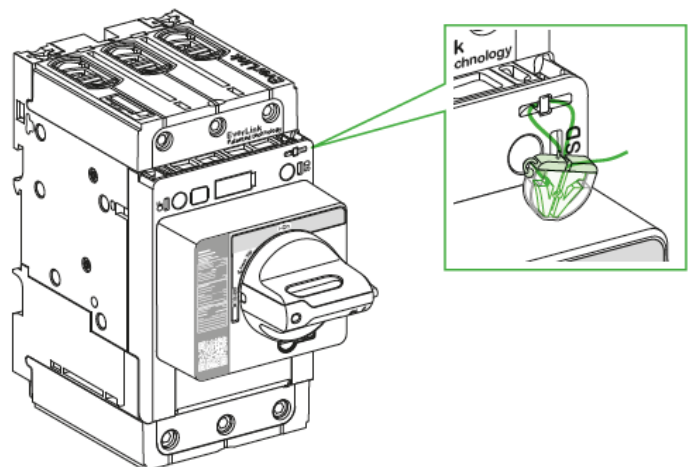
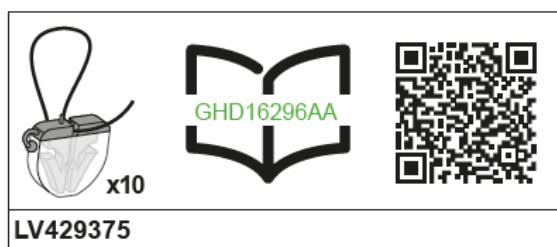


When the rotary handle is in the O-Off position, door opening is possible.

Device closing is authorized when the door is open.



Sealing



To install the sealing accessory, consult the instruction sheet GHD16296AA.

Manufacturing Date

The product's manufacture date is coded PP-YYYY-Www-D, where:

- PP: plant code
- YYYY: year of manufacture
- Www: week of manufacture
- D: weekday of manufacture
(Monday = 1)

Eg: 7Q-2021-W20-3 = product manufactured at plant 7Q on Wednesday 19 May 2021

Schneider Electric Industries SAS

35, rue Joseph Monier

CS 30323

F – 92506 Rueil Malmaison Cedex www.se.com

GEX2480307-00

© 2022 Schneider Electric – All rights reserved.

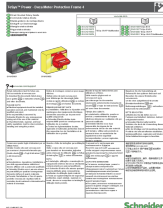
Schneider Electric Limited Stafford Park 5

Telford, TF3 3BL

United Kingdom

www.se.com/uk

Documents / Resources

	<p>Schneider Electric GV4ADN01 Direct Mounted Rotary Handle [pdf] Instructions GV4ADN01, GV4ADN02, Direct Mounted Rotary Handle, Rotary Handle, Direct Mounted Handle, Handle, GV4ADN01 Rotary Handle</p>
---	---

References

- [Schneider Electric Global | Global Specialist in Energy Management and Automation](#)
- [Support | Schneider Electric Global](#)
- [Schneider Electric UK | Energy Management and Automation](#)