



## Schneider Electric Enerlin'X FDM121 Front Display Module for One Circuit Breaker Owner's Manual

[Home](#) » [Schneider Electric](#) » Schneider Electric Enerlin'X FDM121 Front Display Module for One Circuit Breaker Owner's Manual 



TRV00121  
Enerlin'X FDM121 Front Display  
Module for One Circuit Breaker  
Owner's Manual



## Contents

- 1 Enerlin'X FDM121 Front Display Module for One Circuit Breaker
- 2 Required for Installation
- 3 Description
- 4 Dimensions
- 5 Installation
- 6 24 Vdc Power Supply
- 7 ULP Connection
- 8 Communication Architecture
- 9 Commissioning
- 10 Documents / Resources
  - 10.1 References

## Enerlin'X FDM121 Front Display Module for One Circuit Breaker

? → [se.com/support](http://se.com/support)







QGH80971-03




[http://download.schneider-electric.com/files?p\\_Doc\\_Ref=QGH80971](http://download.schneider-electric.com/files?p_Doc_Ref=QGH80971)



	<a href="http://www.se.com">www.se.com</a>	
	 FDM121	 ULP System
	DOCA0088EN	DOCA0093EN
		0602IB1503

Retain instruction sheet for future use.

Visit our website at [www.se.com](http://www.se.com) to download the documents listed above (user guides ) and other documents.

#### PLEASE NOTE

- Electrical equipment should be installed, operated, serviced, and maintained only by qualified personnel.
- No responsibility is assumed by Schneider Electric for any consequences arising out of the use of this material.
- All pertinent state, regional, and local safety regulations must be observed when installing and using this product.



**DANGER**

#### HAZARD OF ELECTRIC SHOCK, EXPLOSION, OR ARC FLASH

- Only qualified workers should install this equipment. Such work should be performed only after reading this entire set of instructions.
- NEVER work alone.
- Before performing visual inspections, tests, or maintenance on this equipment, disconnect all sources of electric power.  
Assume that all circuits are live until they have been completely deenergized, tested, and tagged. Pay particular attention to the design of the power system. Consider all sources of power, including the possibility of backfeeding.
- Apply appropriate personal protective equipment (PPE) and follow safe electrical work practices. See NFPA 70E, CSA Z462, NOM-029-STPS or local equivalent.
- Turn off all power supplying the equipment in which the FDM121 display is to be installed before installing and wiring the FDM121 display.
- Always use a properly rated voltage sensing device to confirm that power is off.
- Beware of potential hazards, and carefully inspect the work area for tools and objects that may have been left inside the equipment.

**Failure to follow these instructions will result in death or serious injury.**

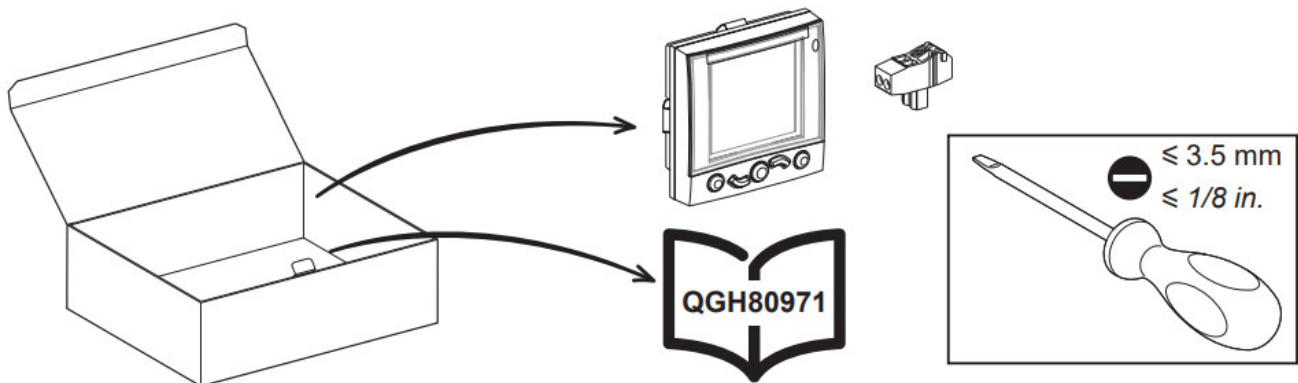


**WARNING:** This product can expose you to chemicals including Diisononyl Phthalate (DINP), which is

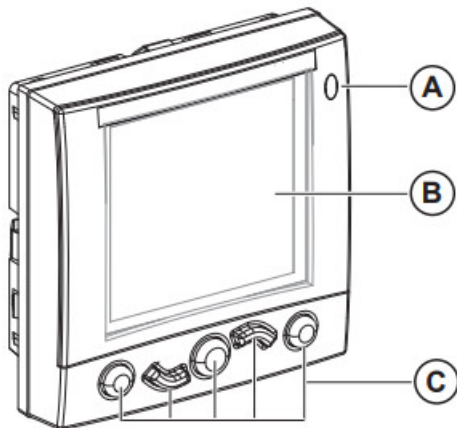
known to the State of California to cause cancer and Diisodecyl Phthalate (DIDP) which is known to the State of California to cause birth defects or other reproductive harm.

For more information go to [www.P65Warnings.ca.gov](http://www.P65Warnings.ca.gov).

## Required for Installation



## Description



**A** Alarm indicator LED

- steady off: nominal operation
- blinking: high priority alarm
- steady on: medium priority alarm

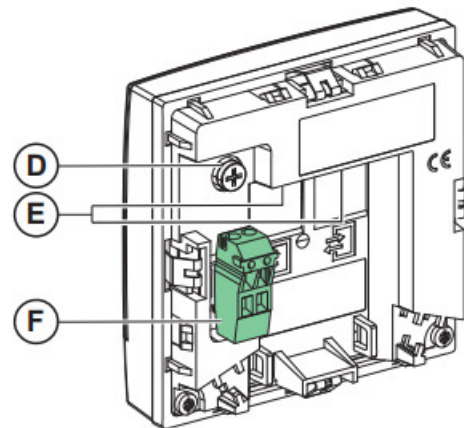
**B** LCD screen

**C** Navigation keys

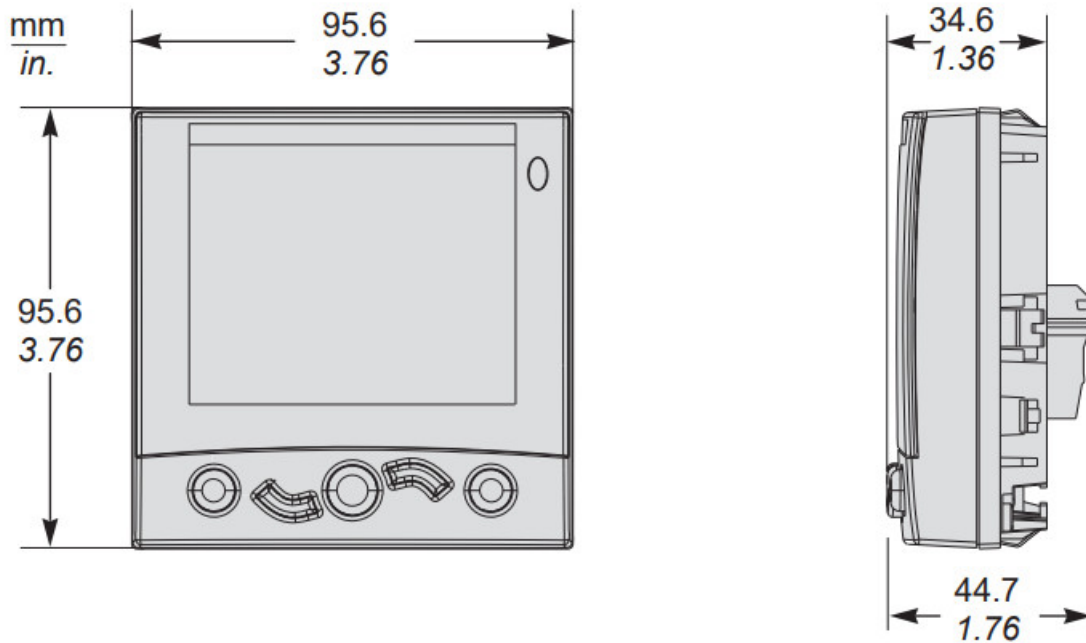
**D** Functional ground

**E** 2 RJ45 ULP ports

**F** 24 Vdc power supply terminal block

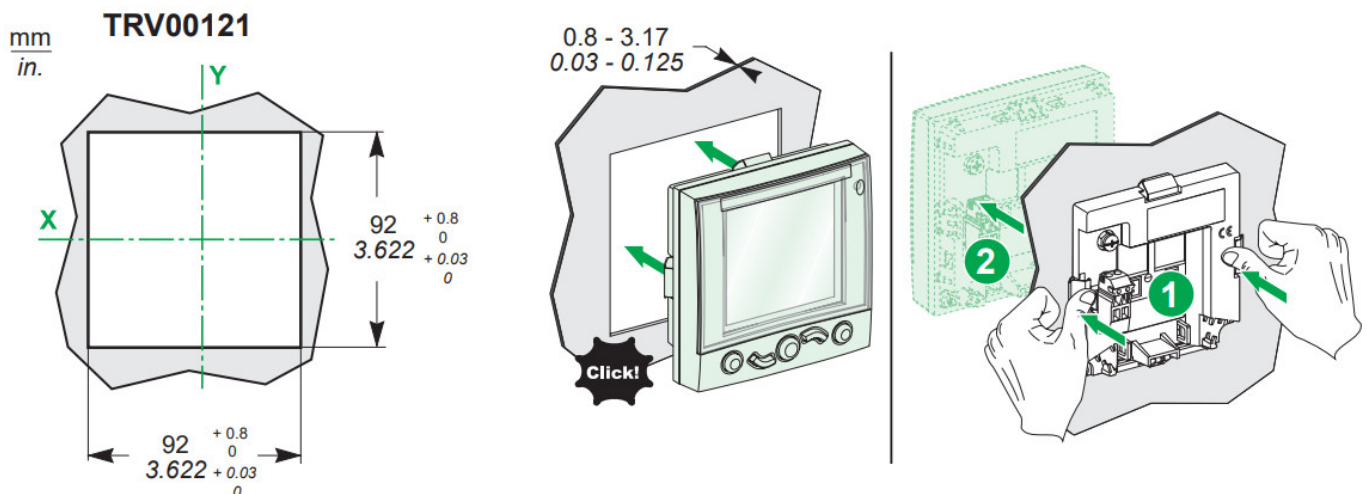


## Dimensions

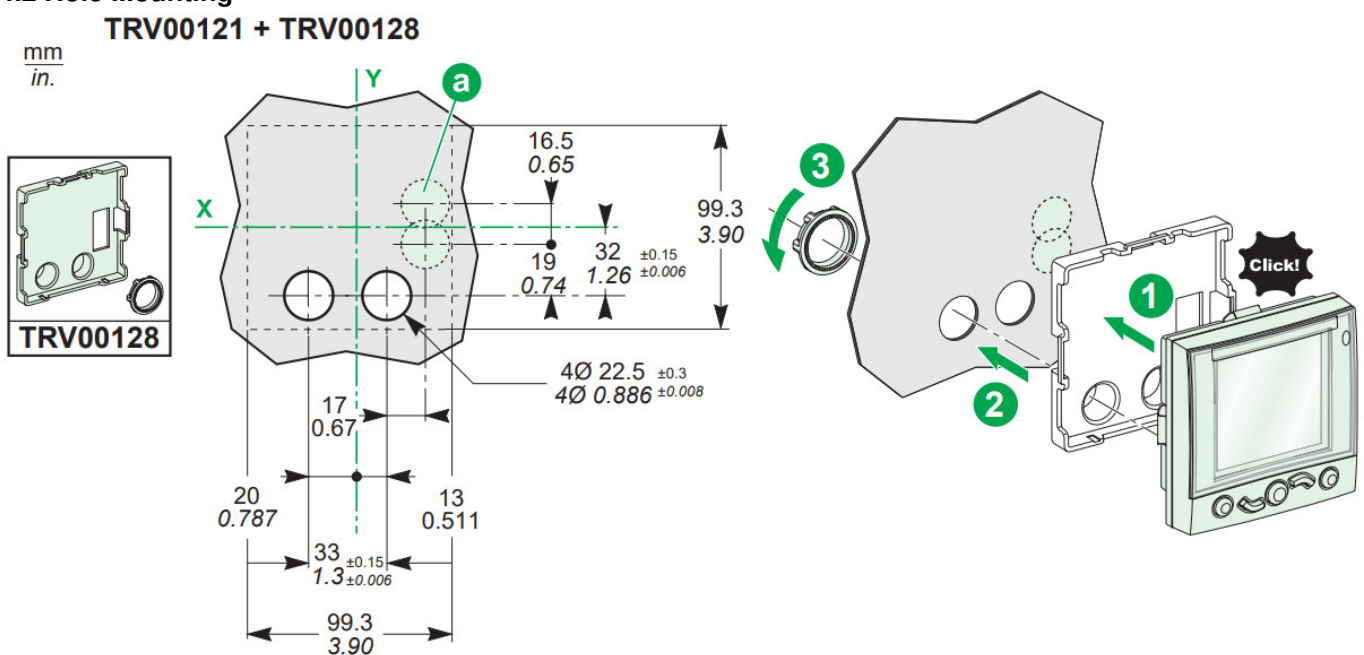


## Installation

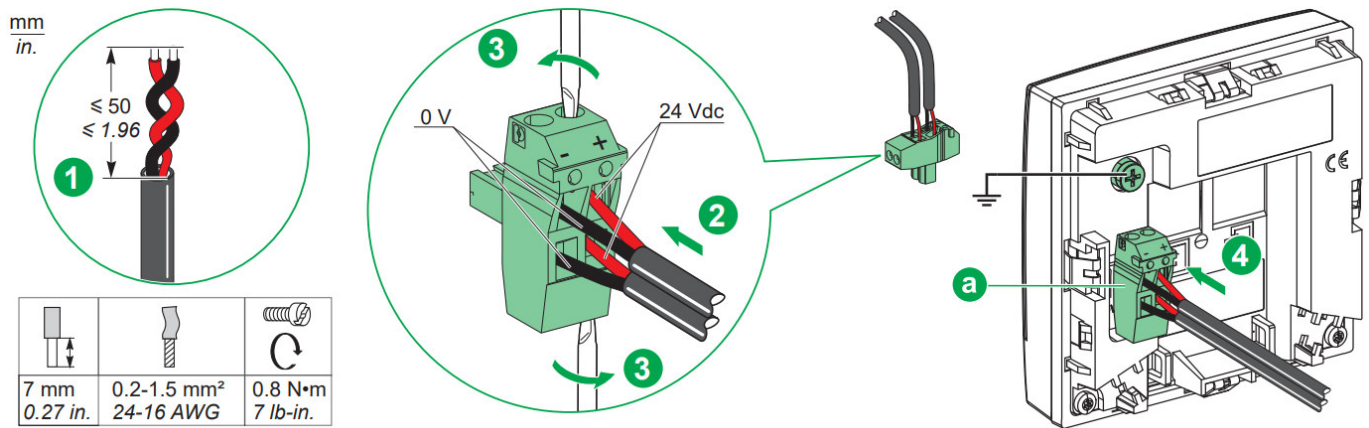
### 4.1 Door Cutout Mounting



### 4.2 Hole Mounting



## 24 Vdc Power Supply



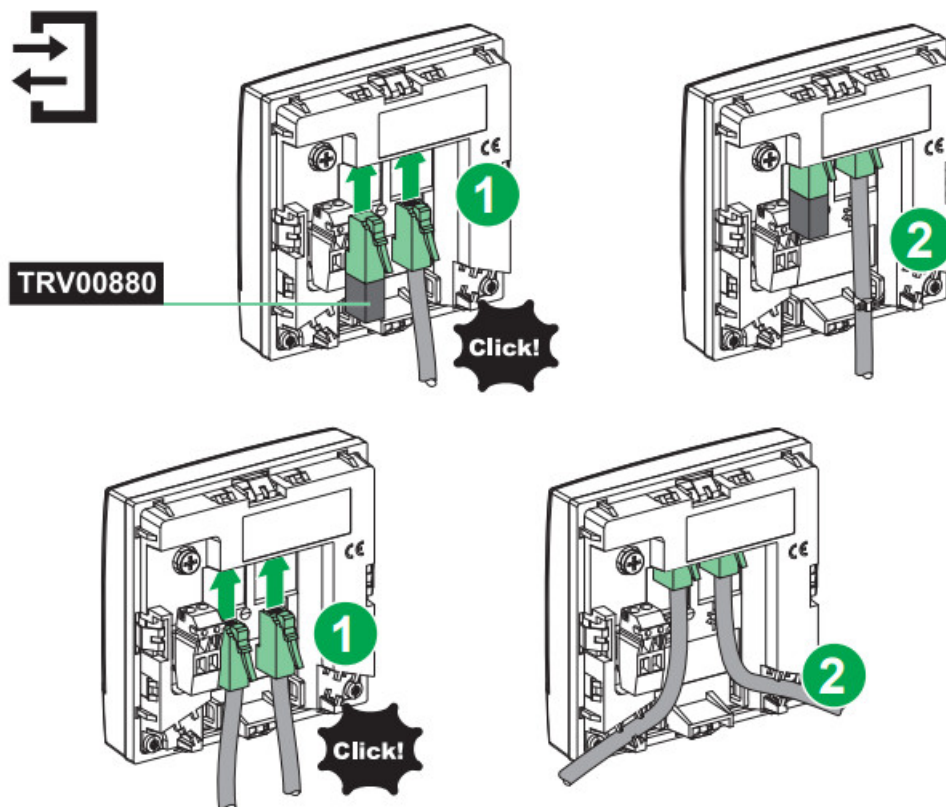
## ULP Connection

### NOTICE

#### HAZARD OF EQUIPMENT DAMAGE

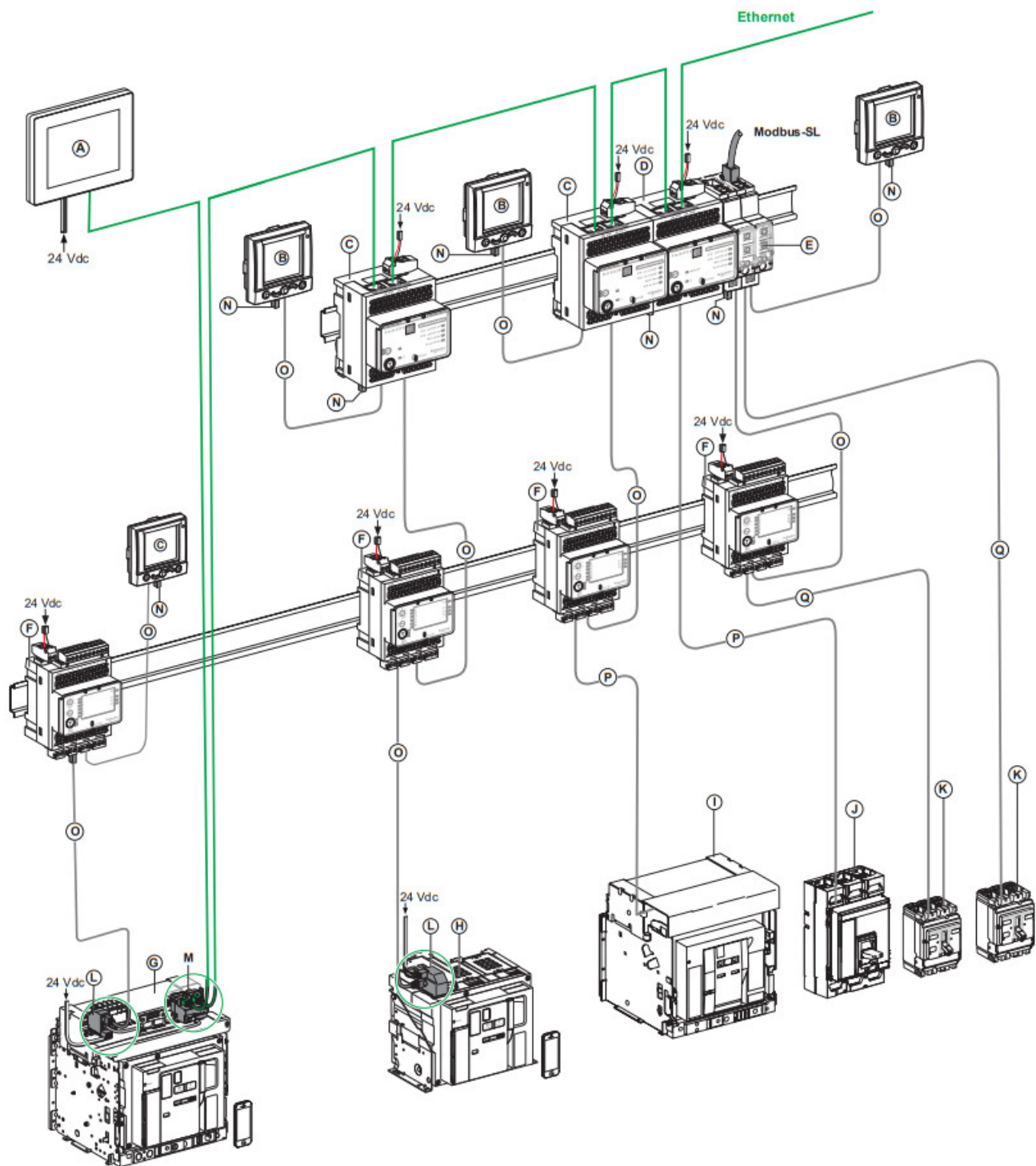
- Never connect a Modbus-SL device to a ULP RJ45 port.
- The FDM121 display ULP RJ45 ports, are for ULP modules only.
- Any other use can damage the FDM121 display or the device connected to the FDM121 display.
- To check if a ULP module is compatible with the FDM121 display's ULP RJ45 ports, refer to the ULP system user guide.

Failure to follow these instructions can result in equipment damage.



## Communication Architecture





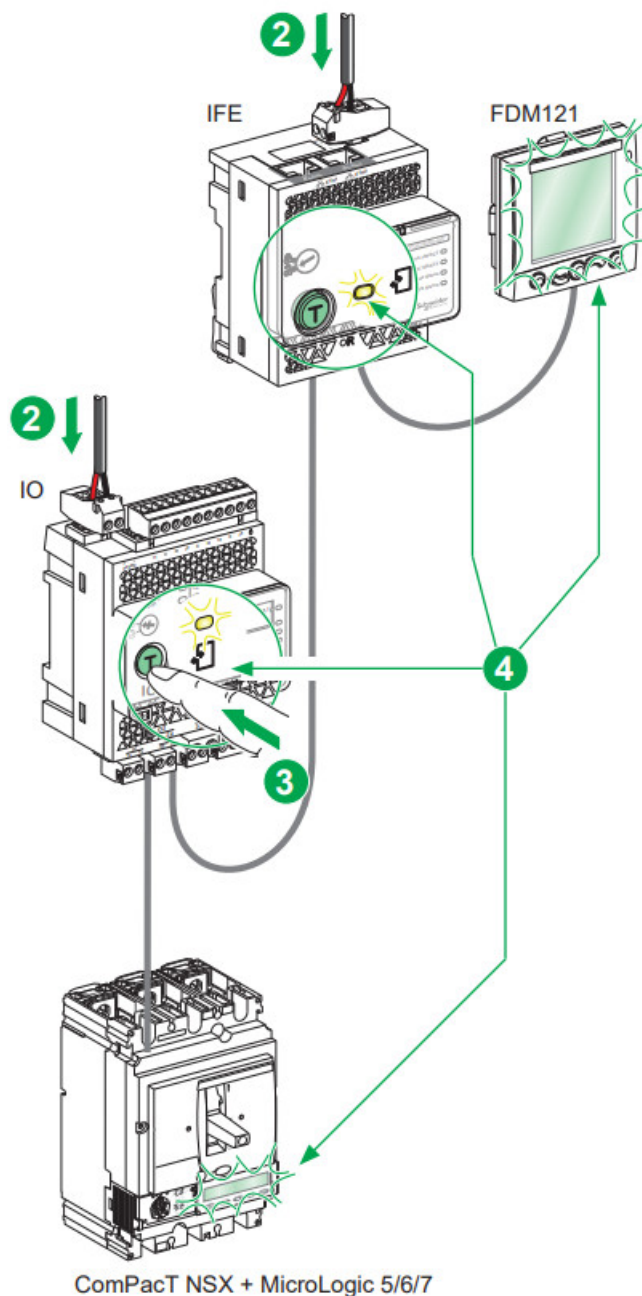
<p><b>A</b> FDM128 (LV434128)  <b>B</b> FDM121 (TRV00121)  <b>C</b> IFE (LV434001)  <b>D</b> IFE server (LV434002)  <b>E</b> IFM (TRV00210)  <b>F</b> IO (LV434063)</p>	<p><b>G</b> Drawout MasterPact MTZ1/MTZ2/MTZ3  <b>H</b> Fixed MasterPact MTZ1/MTZ2/MTZ3  <b>I</b> MasterPact NT/NW  <b>J</b> ComPact NS630b-3200 / PowerPac T P-, R-Frame  <b>K</b> ComPact NSX / PowerPacT H-, J-, L-Frame  <b>L</b> ULP port module</p>	<p><b>M</b> EIFE (LV851001)  <b>N</b> ULP line termination (TRV00880)  — <b>O</b> ULP cord — Ethernet  — <b>P</b> BCM ULP cord — Modbus-SL  <b>Q</b> NSX cord</p>
---	---	---

## Commissioning

1. Connect the intelligent modular unit (IMU) modules together.

2. Supply the IMU communication interface with 24 Vdc.
3. Press the IO module Test/Reset button for 1 to 5 seconds.
4. Check that all the ULP modules in the IMU react:
  - the ULP status LED flashes on the IO module, on the IFM or IFE
  - the screen flashes for 15 seconds on the FDM121 display, on the MicroLogic 5/6/7 trip units in the ComPacT NSX and PowerPacT H-, J-, L-frame circuit breaker, on the MicroLogic P/H trip units in the MasterPact NT/NW, ComPacT NS and PowerPacT P-, R-frame circuit breakers, and on the MicroLogic X trip units in the MasterPact MTZ circuit breaker.

**Note:** The screen of the MicroLogic A/E trip units in the MasterPact NT/NW, ComPacT NS and PowerPacT P-, R-frame circuit breakers does not flash during this check.



**Schneider Electric Industries SAS**

35, rue Joseph Monier

CS 30323

F – 92506 Rueil Malmaison Cedex

[www.se.com](http://www.se.com)

QGH80971-03





Printed on recycled paper.



© 2022 Schneider Electric – All rights reserved.

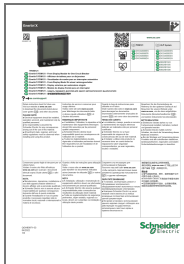
**Schneider Electric Limited**

Stafford Park 5  
Telford, TF3 3BL  
United Kingdom

[www.se.com/uk](http://www.se.com/uk)



## Documents / Resources



[Schneider Electric Enerlin X FDM121 Front Display Module for One Circuit Breaker](#) [pdf]  
Owner's Manual  
Enerlin X FDM121 Front Display Module for One Circuit Breaker, Enerlin X, FDM121 Front Display Module for One Circuit Breaker, for One Circuit Breaker, Circuit Breaker

## References

- [Support | Schneider Electric Global](#)
- [P65Warnings.ca.gov](#)
- [Schneider Electric Global | Global Specialist in Energy Management and Automation](#)
- [Schneider Electric UK | Energy Management and Automation](#)