



Schneider Electric APC SRYLPD Smart-UPS Modular Ultra Power Distribution Unit User Manual

[Home](#) » [Schneider Electric](#) » Schneider Electric APC SRYLPD Smart-UPS Modular Ultra Power Distribution Unit User Manual 

Contents

- [1 Schneider Electric APC SRYLPD Smart-UPS Modular Ultra Power Distribution Unit](#)
- [2 DANGER](#)
- [3 DIMENSION](#)
- [4 Documents / Resources](#)
 - [4.1 References](#)
- [5 Related Posts](#)



Schneider Electric APC SRYLPD Smart-UPS Modular Ultra Power Distribution Unit



NOTE: SRYLPD1 is used for the purpose of illustration. The process is applicable to all PDUs.

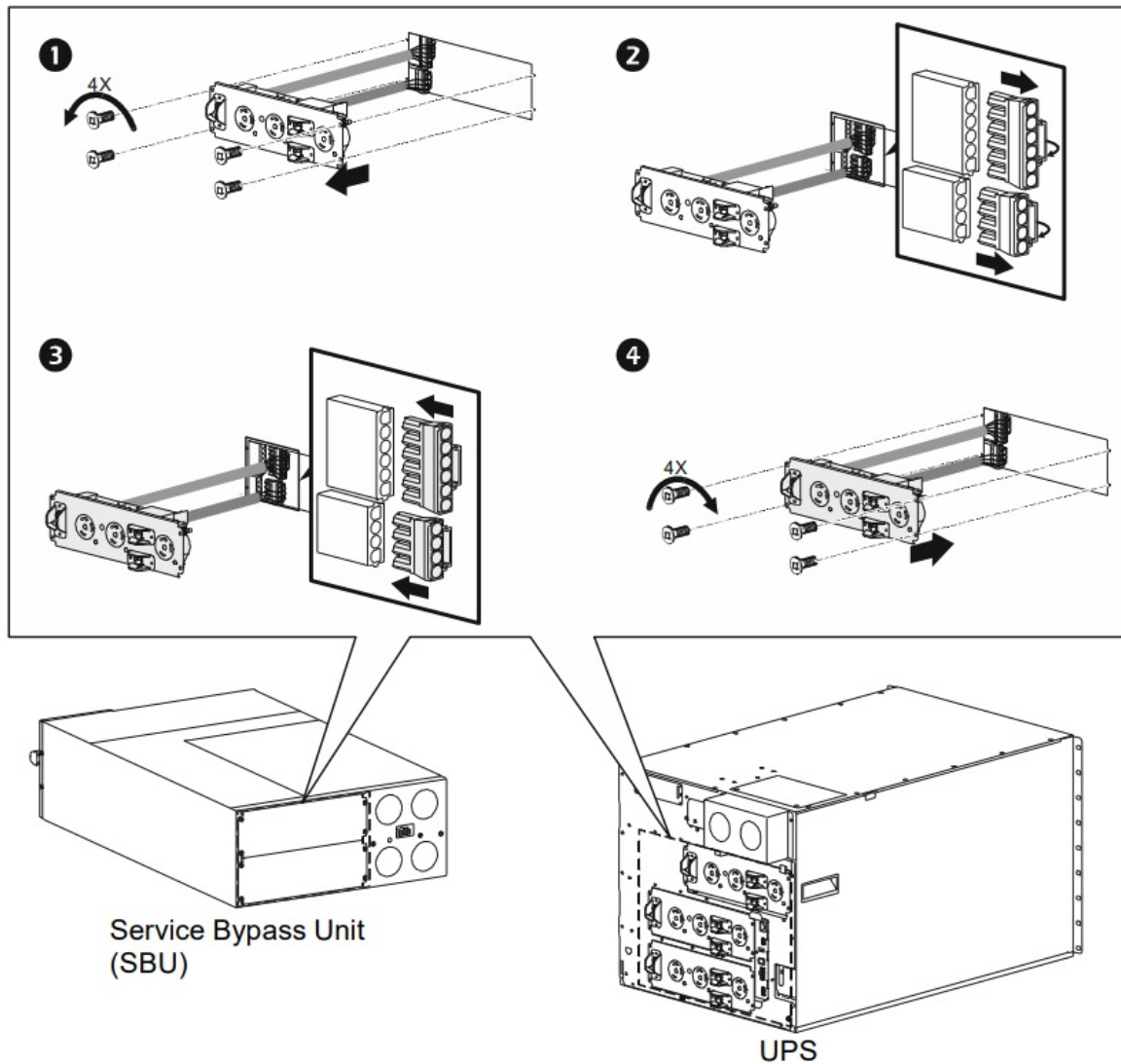
DANGER

RISK OF ELECTRIC SHOCK

- PDUs should be replaced only by a qualified electrician.
- Switch off the electrical panel circuit breaker before attempting to replace the PDUs.
- Be sure that either the Power Distribution Unit (PDU) or the PDU blanking panel is positioned correctly and secured before connecting the unit to AC Mains.

Failure to follow these instructions will result in death or serious injury

DIMENSION



As standards, specifications, and design change from time to time, please ask for confirmation of the information given in this publication.

© 2022 Schneider Electric. All rights reserved.

Schneider Electric


35 rue Joseph Monier

92500 Rueil Malmaison – France

Phone: +33 (0) 1 41 29 70 00

www.apc.com

Documents / Resources

	<p>Schneider Electric APC SRYLPD Smart-UPS Modular Ultra Power Distribution Unit [pdf] User Manual</p> <p>APC SRYLPD Smart-UPS Modular Ultra Power Distribution Unit, APC SRYLPD, Smart-UPS Modular Ultra Power Distribution Unit, Ultra Power Distribution Unit, Power Distribution Unit</p>
---	---

References

- **APC** [APC, a flagship brand of Schneider Electric - APC USA](#)

Manuals+.