

Schneider Electric A9XPK707 VDIS Vertical Distribution Blocks Installation Guide

[Home](#) » [Schneider Electric](#) » Schneider Electric A9XPK707 VDIS Vertical Distribution Blocks Installation Guide



Schneider Electric A9XPK707 VDIS Vertical Distribution Blocks

A9XPK707



A9XPK714



A9XPK715



Contents

- [1 Linergy](#)
- [2 Tools required](#)
- [3 PLEASE NOTE](#)
- [4 A9XPKV04](#)
- [5 A9XPKL10](#)
- [6 Mounting](#)
- [7 Wiring](#)
- [8 Dismounting](#)
- [9 Annexe](#)
- [10 Customer Support](#)
- [11 Documents / Resources](#)
 - [11.1 References](#)
- [12 Related Posts](#)

A9XPK707



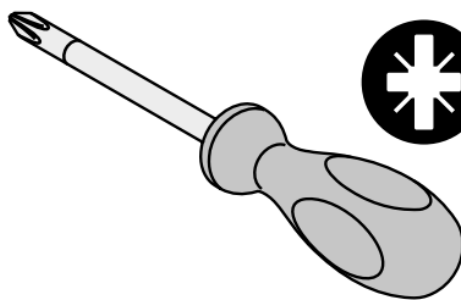
A9XPK714



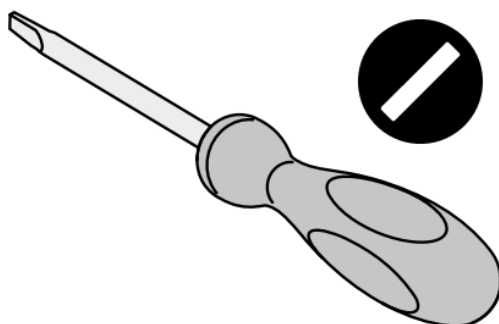
A9XPK715



Tools required



PZ2



5.5 mm

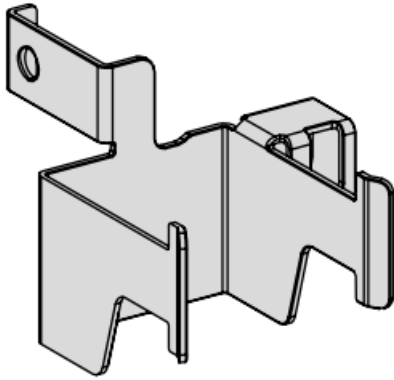
PLEASE NOTE

- The installation, maintenance and eventual replacement of this device must only be carried out by a qualified electrician.
- This device must not be repaired.
- All applicable local, regional and national regulations must be complied with during the installation, use, maintenance and replacement of this device.
- This device should not be installed if, when unpacking it, you observe that it is damaged.
- Schneider Electric cannot be held responsible in the event of noncompliance with the instructions in this document and in the documents to which it refers.
- The service instruction must be observed throughout the life time of this device.



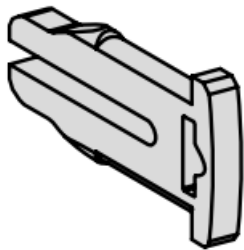
A9XPKV04

Support for installation into PrismaSeT G and Prisma Pack enclosure.



i A9XPKL10

Spare part: Locking Clip for installation into PrismaSeT XS 24 – PrismaSeT S 24 – Resi9 24 – Pragma 24 modules enclosure.

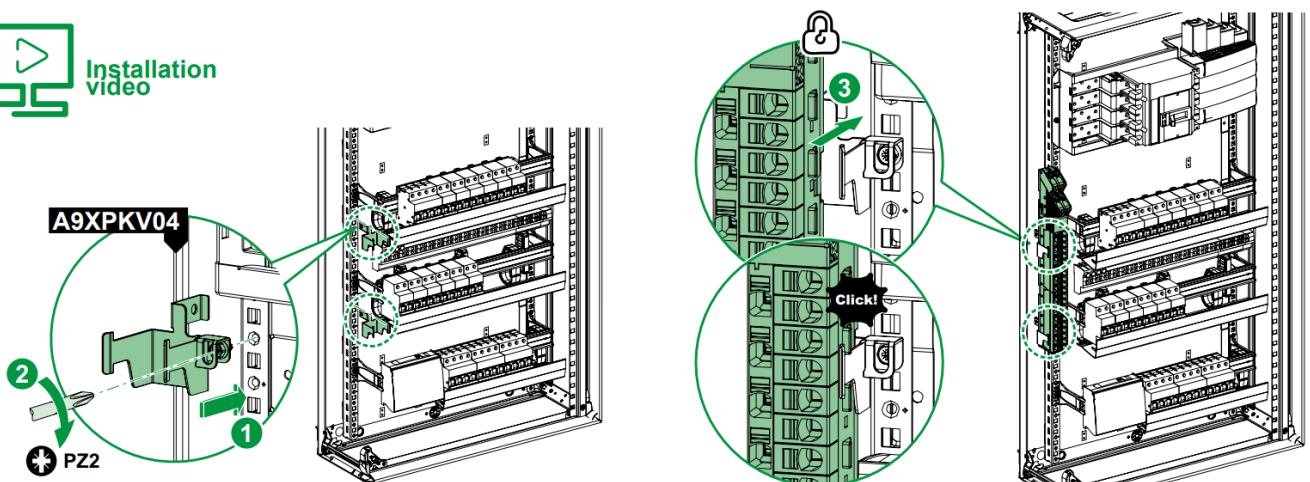


Mounting

PrismaSeT G – Prisma Pack



Installation
Video



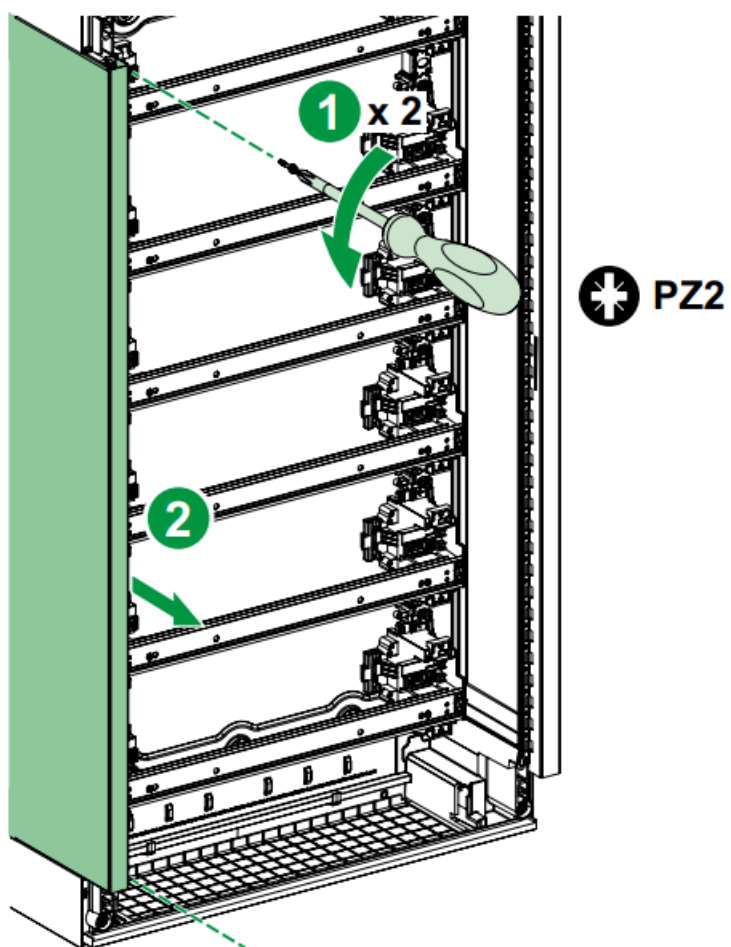
PrismaSeT XS 24 – PrismaSeT S 24 – Resi9 24 – Pragma 24

i Selection Guide: PrismaSeT XS 24 – PrismaSeT S 24 and Resi9

- Pragma 24 surface mounted modules enclosures

Rows

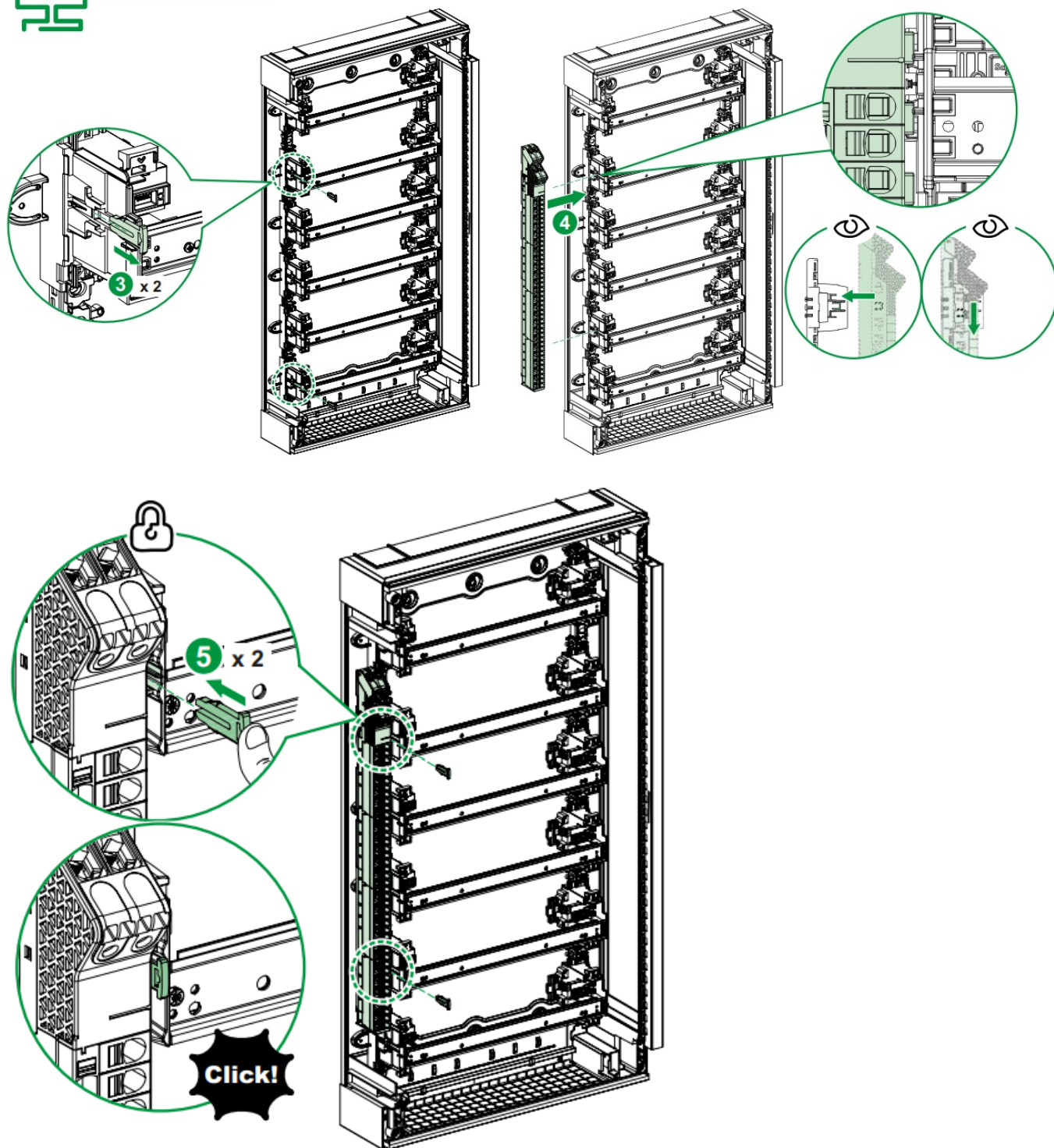
	1 - 2 - 3	4 - 5	6	7 - 8
PrismaSeT XS 24				
A9XPK707	—	■	■	—
A9XPK714	—	—	■	—
A9XPK715	—	—	—	—
PrismaSeT S 24				
A9XPK707	—	■	■	■
A9XPK714	—	—	■	■
A9XPK715	—	—	■	■




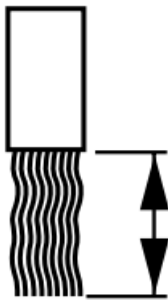
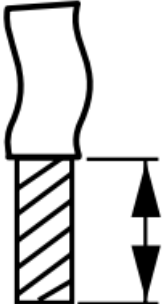
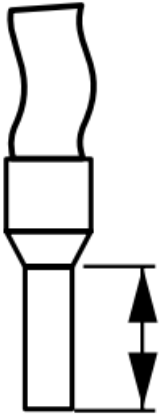
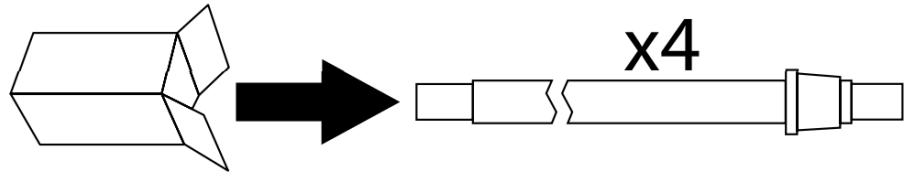
PrismaSeT XS 24 – PrismaSeT S 24 – Resi9 24 – Pragma 24


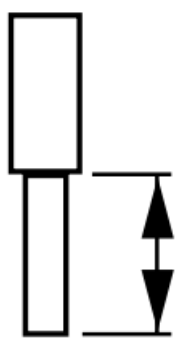
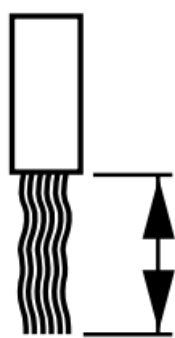
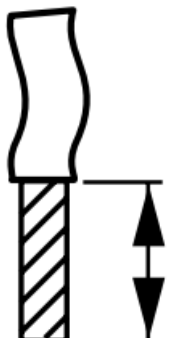
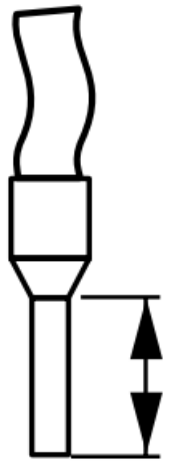


Installation video



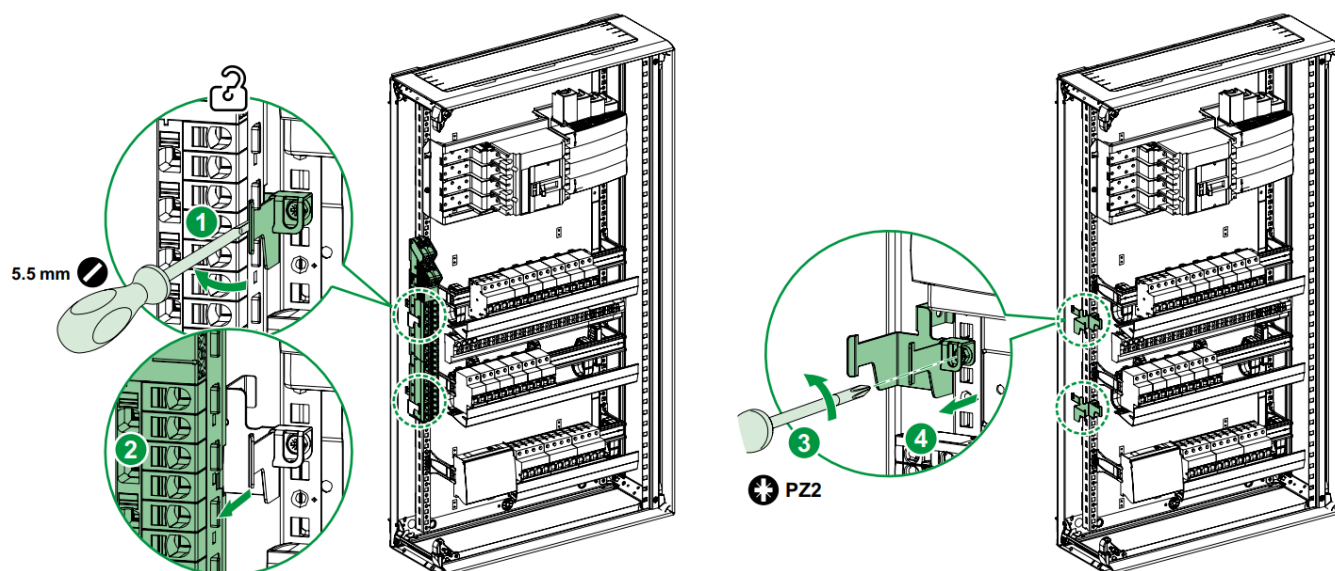
PrismaSet S 24

	 <p>18 mm</p>	 <p>18 mm</p>	 <p>18 mm</p>
A9XPK707 A9XPK714	10... 35 mm ²	10... 35 mm ²	10... 35 mm ²
A9XPK715			

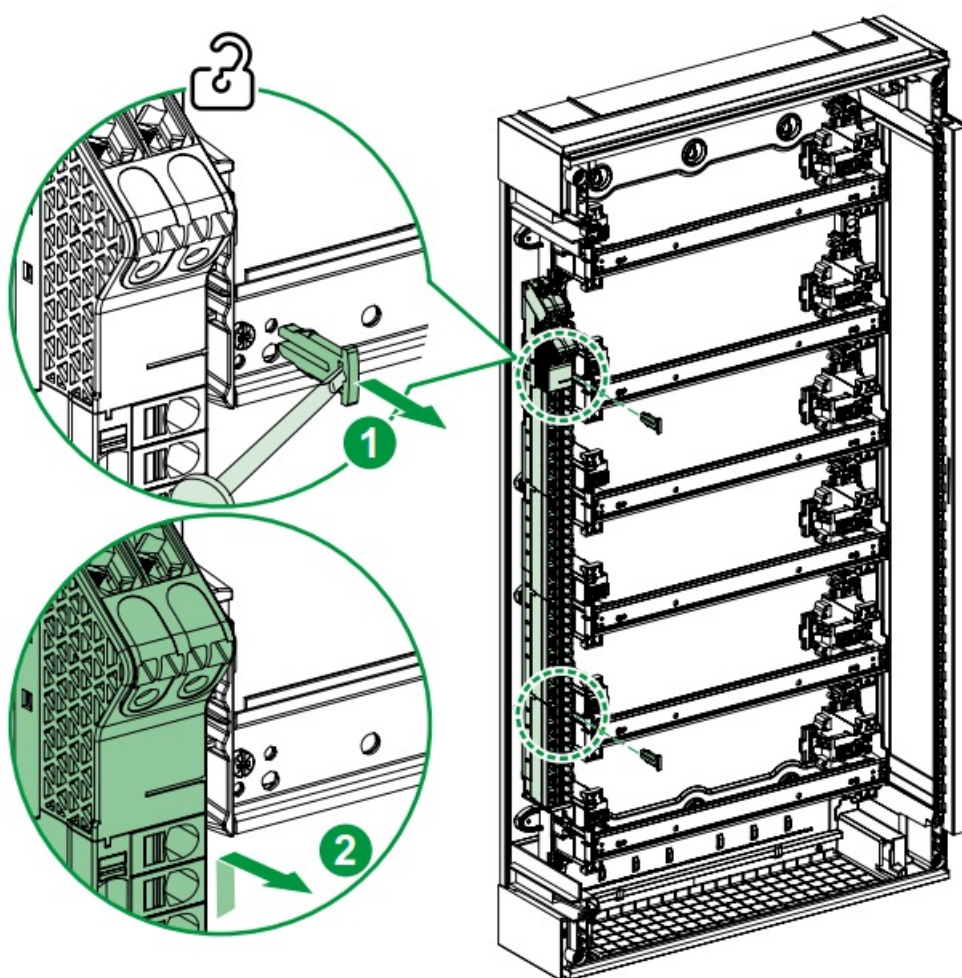
	 <p>18 mm</p>	 <p>18 mm</p>	 <p>18 mm</p>	 <p>18 mm</p>
A9XPK707 A9XPK714 A9XPK715	1.5...10 mm ²	4...16 mm ²	1.5...16 mm ²	1.5...16 mm ²

Dismounting

PrismaSeT G – Prisma Pack

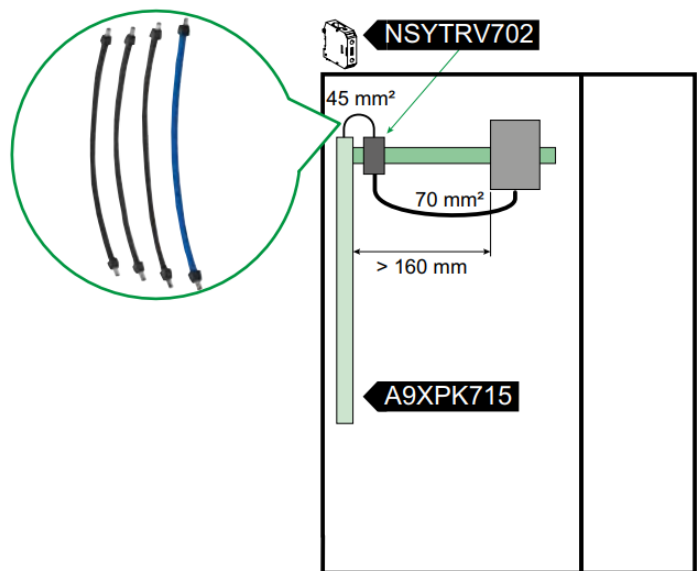
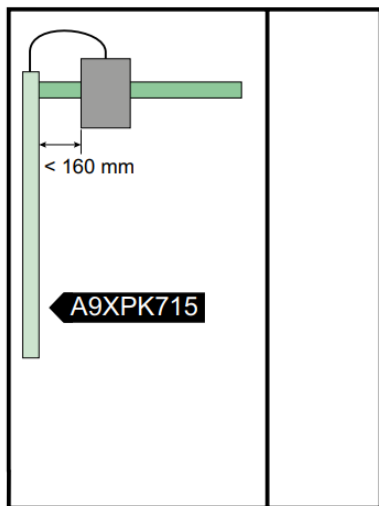


PrismaSeT XS 24 – PrismaSeT S 24 – Resi9 24 – Pragma 24

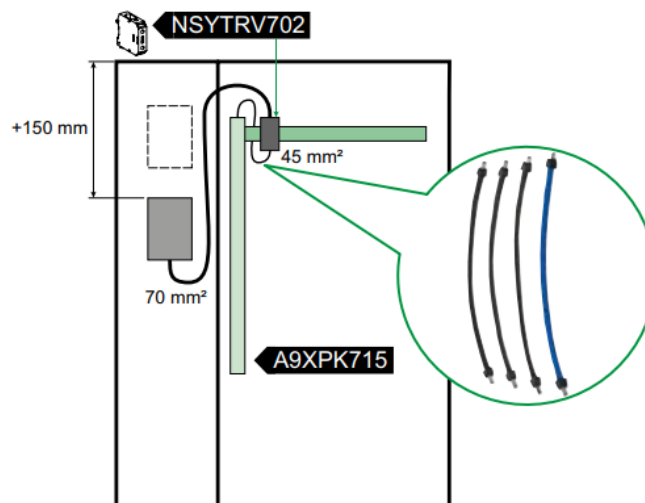
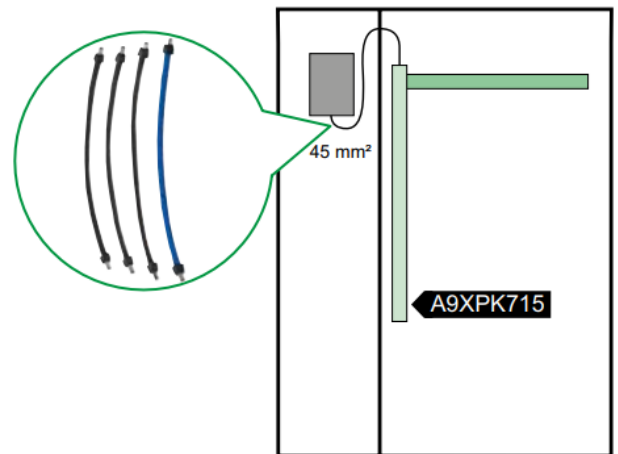
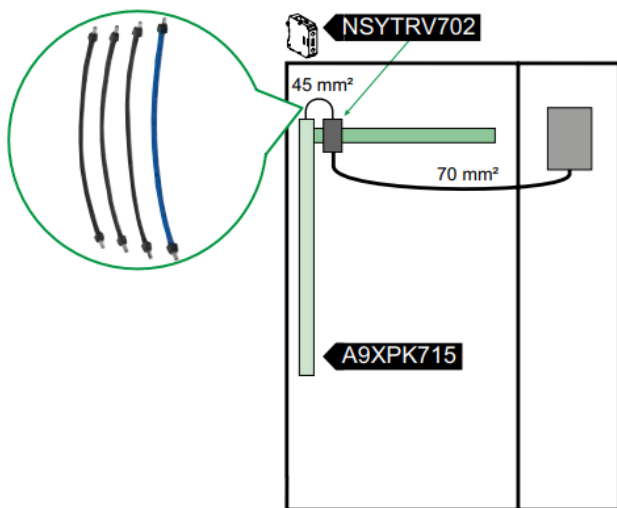


Annexe

NSXm



NSX – NSXm



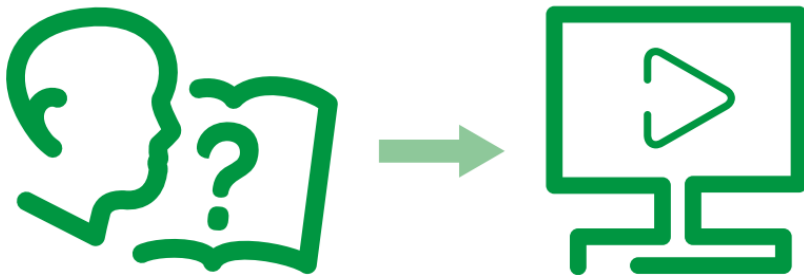


Installation by electricians only



Wear cut-resistant gloves

Customer Support



- VDIS 125 A 66 Connection Points



- VDIS 160 A 66 Connection Points



Schneider Electric Industries SAS

35, rue Joseph Monier
CS 30323
F – 92506 Rueil Malmaison Cedex

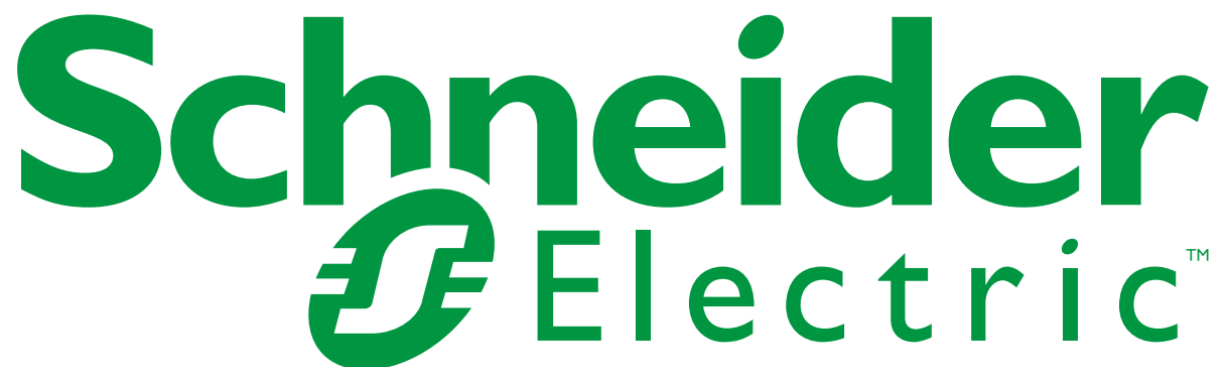
<http://www.se.com/>



Schneider Electric Limited

Stafford Park 5
Telford, TF3 3BL
United Kingdom

© 2023 Schneider Electric – All rights reserved.



Documents / Resources



[Schneider Electric A9XPK707 VDIS Vertical Distribution Blocks](#) [pdf] Installation Guide
A9XPK707, A9XPK714, A9XPK715, A9XPK707 VDIS Vertical Distribution Blocks, VDIS Vertical
I Distribution Blocks, Vertical Distribution Blocks, Distribution Blocks, Blocks

References

- [Schneider Electric Global | Global Specialist in Energy Management and Automation](#)
- [User Manual](#)