



[Home](#) » [Schlage](#) » **SCHLAGE SENSEPRO2 Key Free Access Control Module User Manual** 

## SCHLAGE SENSEPRO2 Key Free Access Control Module User Manual

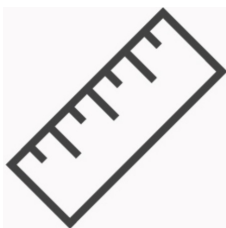


## Contents [ [hide](#) ]

- 1 Tools Needed
- 2 Remove existing deadbolt
- 3 Prepare for WiFi connection
- 4 Parts Included
- 5 Deadbolt can be lengthened by twisting, if necessary
- 6 Install bolt into door
- 7 Install reinforcement strike into door frame
- 8 Install support plate on interior of door
- 9 Install inside assembly
- 10 Install inside assembly
- 11 Secure inside assembly
- 12 Install batteries
- 13 Set up your lock
- 14 FCC/IC Statement
- 15 Documents / Resources
  - 15.1 References

## Tools Needed

- Ruler or Tape Measure



- Phillips Screwdriver



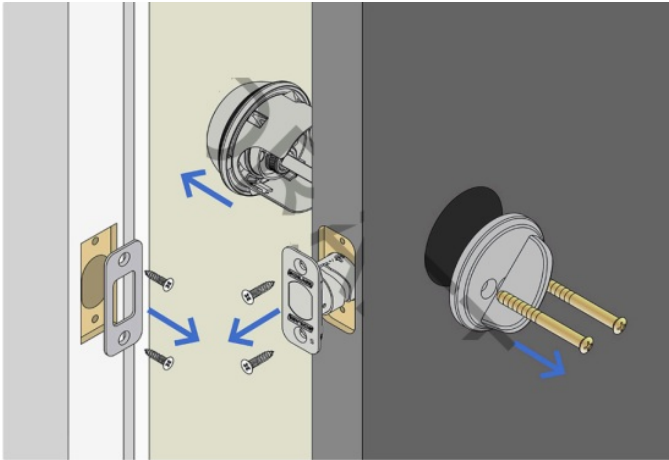
You can use a manual or electric screwdriver, but DO NOT use a power drill!

## Remove existing deadbolt

Before starting, measure your door thickness. Your new deadbolt will fit on a door 1-3/8" to 2" thick.

**Customer Service:** [888-805-9837](tel:888-805-9837)

If you have not done so already, remove the existing deadbolt from the door.



## Prepare for WiFi connection



Make sure your WiFi network is secured and you have the password. You will need this information to set up your Schlage (Walton)<sup>™</sup> lock after installation.

You need a strong WiFi signal for optimal performance.

## Parts Included

No image included here for Pilot testing.

## Deadbolt can be lengthened by twisting, if necessary

This is only necessary if your door has the larger 2-3/4" (70 mm) backset.



### What does backset mean?

### **Install bolt into door**

The word “TOP” is stamped into the bolt body and shows which side goes up.



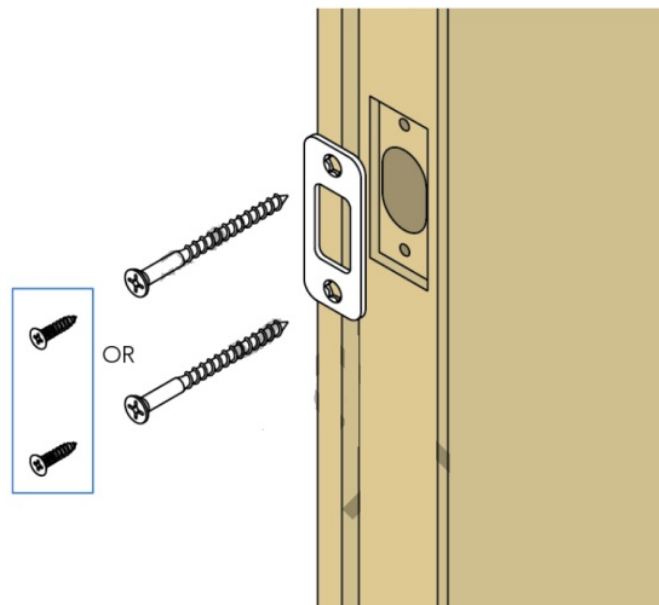
### My door edge looks different

### **Install reinforcement strike into door frame**

Use the long screws to install reinforcement strike, unless you have a side light.

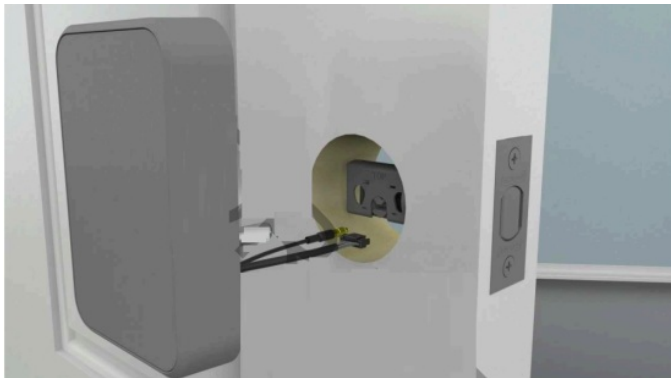
### **Caution!**

If your door has a side light (a window next to your door), you may not be able to use



the long screws.

Route both cables through the door **BELOW** the bolt. Push the touchscreen onto the door. The mounting posts go through the two holes in the deadbolt.



## Install support plate on interior of door

Route the cables through the rectangular hole in the support plate. Secure with screws. Make sure the outside touchscreen is straight before tightening screws all the way.

### Caution!

**Do not use a drill or screw gun. Do not overtighten!**



## Install inside assembly

1. Connect the cables. Press the cables firmly together. This may require some force.  
Push until fully connected. The rectangular connector will click when fully connected.
2. Align the tailpiece on the back of the inside assembly with the hole in the center of the support plate. Press the  
inside assembly onto the support plate.

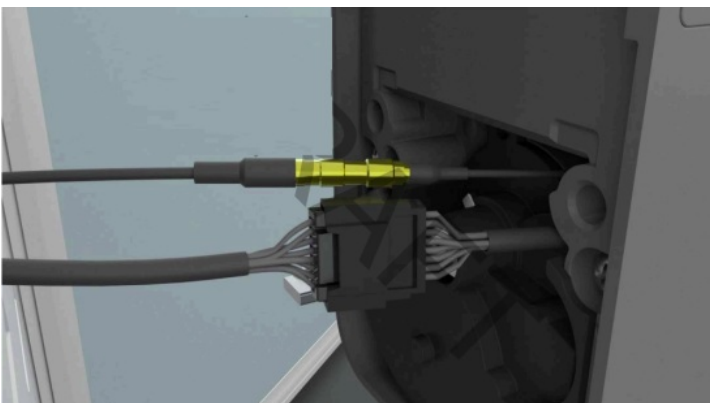
**The cable connectors fit horizontally in the space on the back of the inside assembly when properly installed, as shown in animation.**



### **Install inside assembly**

1. Connect the cables. Press the cables firmly together. This may require some force.  
Push until fully connected. The rectangular connector will click when fully connected.
2. Align the tailpiece on the back of the inside assembly with the hole in the center of the support plate. Press the inside assembly onto the support plate.

**The cable connectors fit horizontally in the space on the back of the inside assembly when properly installed, as shown in animation.**

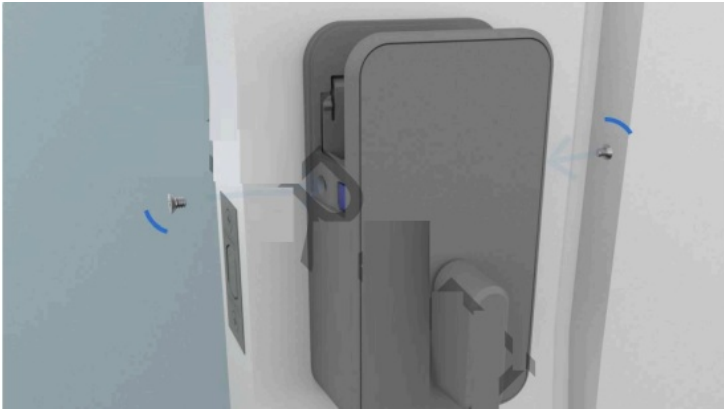


### **Secure inside assembly**

Remove the battery cover and battery holder, then secure inside assembly with two screws.

### **Caution!**

Do not use a drill or screw gun. Do not overtighten!

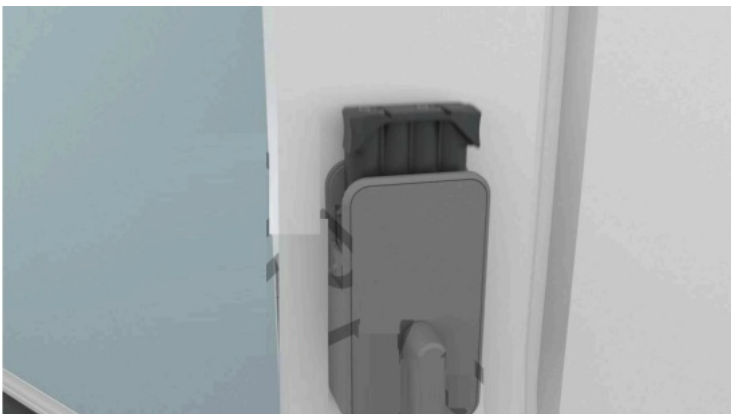


If your inside assembly is not flush against the door, you cannot secure with screws. Make sure connectors are arranged as instructed. Press button to see step.

### **See how to arrange connectors**

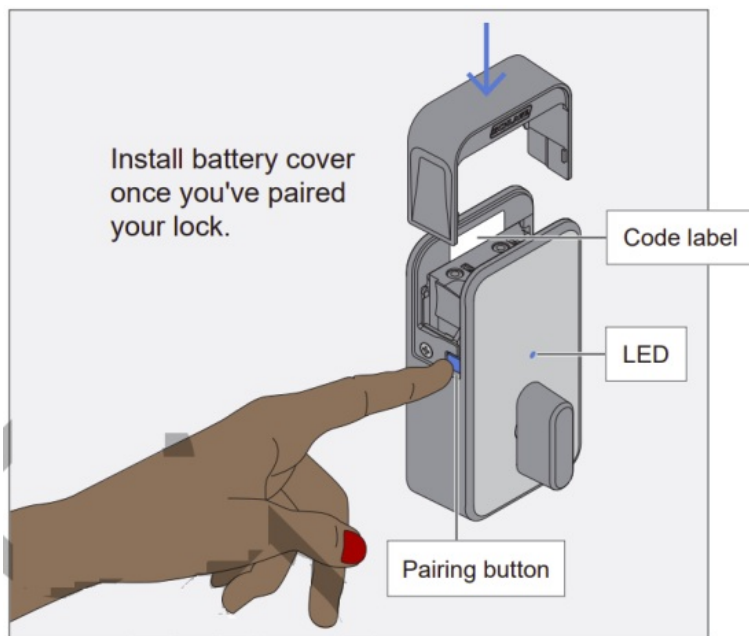
### **Install batteries**

Install 4 AA batteries into battery holder. Turn the battery holder around so the batteries face the door. Reinstall battery holder.



### **Set up your lock**

Once batteries are installed open Home app and follow process to add your lock. Press the blue button to enter pairing mode. The code label is under the battery cover. A blue LED will light.



**[Return to Main Menu](#)**

## **FCC/IC Statement**

### **FCC Interference Statement**

This equipment has been tested and found to comply with the limits for a Class B digital device, pursuant to Part 15 of the FCC Rules. These limits are designed to provide reasonable protection against harmful interference in a residential installation.

This equipment generates, uses and can radiate radio frequency energy and, if not installed and used in accordance with the instructions, may cause harmful interference to radio communications. However, there is no guarantee that interference will not occur in a particular installation. If this equipment does cause harmful interference to radio or television reception, which can be determined by turning the equipment off and on, the user is encouraged to try to correct the interference by one of the following measures

- Reorient or relocate the receiving antenna.
- Increase the separation between the equipment and receiver.
- Connect the equipment into an outlet on a circuit different from that to which the receiver is connected.
- Consult the dealer or an experienced radio/TV technician for help.

This device complies with Part 15 of the FCC Rules. Operation is subject to the following two conditions

1. This device may not cause harmful interference, and
2. This device must accept any



interference received, including interference that may cause undesired operation.

**Note:** Changes or modifications not expressly approved by the party responsible for compliance could void the user’s authority to operate the equipment.


**RF Exposure**

To comply with FCC/IC RF exposure requirements for mobile transmitting devices, this transmitter should only be used or installed at locations where there is at least 20 cm separation distance between the antenna and all persons. Under Industry Canada regulations, this radio transmitter may only operate using an antenna of a type and maximum (or lesser) gain approved for the transmitter by Industry Canada. To reduce potential radio interference to other users, the antenna type and its gain should be so chosen that the equivalent isotropically radiated power (e.i.r.p.) is not more than that necessary for successful communication. This Device complies with Industry Canada License-exempt RSS standard(s). Operation is subject to the following two conditions: 1) this device may not cause interference, and 2) this device must accept any interference, including interference that may cause undesired operation of the device.

© Allegion 2024  
Schlage FCC/IC Supplement  
Rev. 10/24-e



**Documents / Resources**

	<p><a href="#">SCHLAGE SENSEPRO2 Key Free Access Control Module [pdf]</a> User Manual</p> <p>XPB-SENSEPRO2, XPBSENSEPRO2, SENSEPRO2 Key Free Access Control Module, SENSEPRO2, Key Free Access Control Module, Free Access Control Module, Access Control Module, Control Module</p>
---	--

**References**

- [User Manual](#)

■ Schlage

🔑 Access Control Module, Control Module, Free Access Control Module, Key Free Access Control Module, Schlage, SENSEPRO2, SENSEPRO2 Key Free Access Control Module, XPB-SENSEPRO2, XPBSENSEPRO2

---

## Leave a comment

Your email address will not be published. Required fields are marked \*

Comment \*

Name

Email

Website

☐ Save my name, email, and website in this browser for the next time I comment.

**Post Comment**

**Search:**

e.g. whirlpool wrf535swhz

**Search**

[Manuals+](#) | [Upload](#) | [Deep Search](#) | [Privacy Policy](#) | [@manuals.plus](#) | [YouTube](#)

This website is an independent publication and is neither affiliated with nor endorsed by any of the trademark owners. The "Bluetooth®" word mark and logos are registered trademarks owned by Bluetooth SIG, Inc. The "Wi-Fi®" word mark and logos are registered trademarks owned by the Wi-Fi Alliance. Any use of these marks on this website does not imply any affiliation with or endorsement.