


SCHLAGE L-LV9050 Indicator Functions



SCHLAGE L-LV9050 Indicator Functions Instructions

[Home](#) » [Schlage](#) » SCHLAGE L-LV9050 Indicator Functions Instructions 

Contents

- [1 SCHLAGE L-LV9050 Indicator Functions](#)
- [2 Specifications](#)
- [3 Installation](#)
- [4 Door Preparation](#)
- [5 Wire Routing](#)
- [6 Documents / Resources](#)
 - [6.1 References](#)



SCHLAGE L-LV9050 Indicator Functions



Specifications

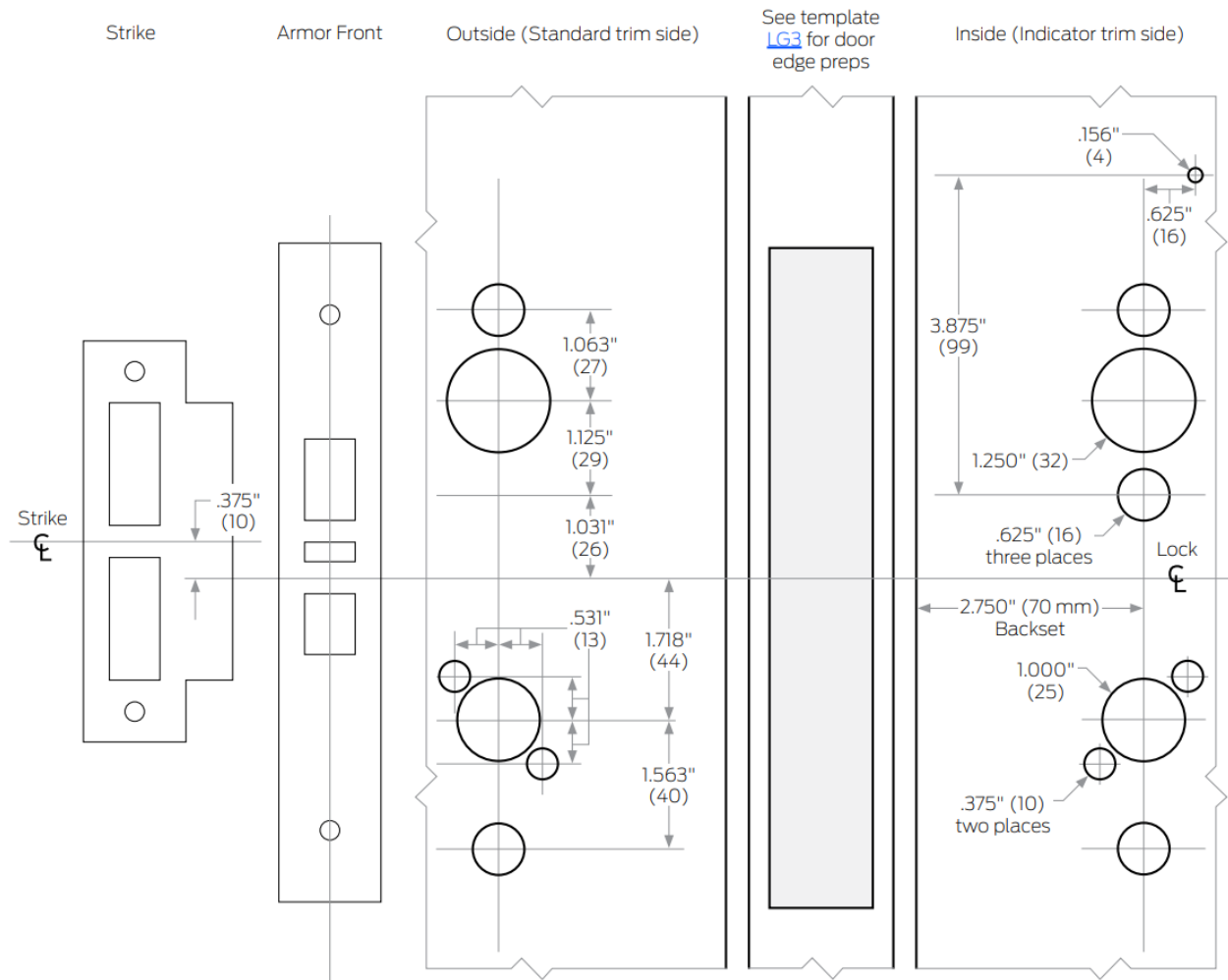
- Product Name: L9000-Series Gen 2 Indicator
- Models: L/LV9050, L/LV9056, L/LV9060, L/LV9071, L/LV9077, L/LV9456, L/LV9457, L/LV9458, L9466, L9473, L/LV9480, L/LV9485
- Features: Indicator Side Outside Inside Dual, Trim Sectional Escutcheon, Strike Armor Front

Installation

1. Ensure the door edge preps match template LG3.

Indicator Side	Trim
Outside	Sectional
Inside	Escutcheon
Dual	

2. Install the lock with the appropriate backset of 2.750 inches (70 mm).



3. Refer to Template LG1 for accurate case and strike dimensions.

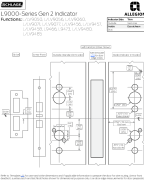
Door Preparation

Use the provided door preparation template LG216 for accurate hole placements for the deadbolt, auxiliary latch, and latch bolt. Follow the measurements closely for proper installation.

Wire Routing

Refer to Template LG1 for information on preparing the door for wire routing. Ensure that any wiring is done neatly and does not obstruct the functionality of the lock.

Documents / Resources



SCHLAGE L-LV9050 Indicator Functions [pdf] Instructions

L-LV9050 Indicator Functions, L-LV9050, Indicator Functions, Functions

References

-  [Allegion US | Redefining Access Control & Commercial Security](#)
- [User Manual](#)

[Manuals+](#), [Privacy Policy](#)

This website is an independent publication and is neither affiliated with nor endorsed by any of the trademark owners. The "Bluetooth®" word mark and logos are registered trademarks owned by Bluetooth SIG, Inc. The "Wi-Fi®" word mark and logos are registered trademarks owned by the Wi-Fi Alliance. Any use of these marks on this website does not imply any affiliation with or endorsement.