



## Contents [ [hide](#) ]

- [1 SCHLAGE FE410F Control Smart Interconnected Lock](#)
- [2 Product Information](#)
- [3 Installation Instructions](#)
- [4 Important installation notes](#)
- [5 Install the bottom part of the lock](#)
- [6 Apply power to the lock](#)
- [7 Install the inside cover](#)
- [8 Test the lock](#)
- [9 Troubleshooting](#)
- [10 Frequently Asked Questions](#)
- [11 Documents / Resources](#)
  - [11.1 References](#)

# SCHLAGE

## SCHLAGE FE410F Control Smart Interconnected Lock



## Product Information

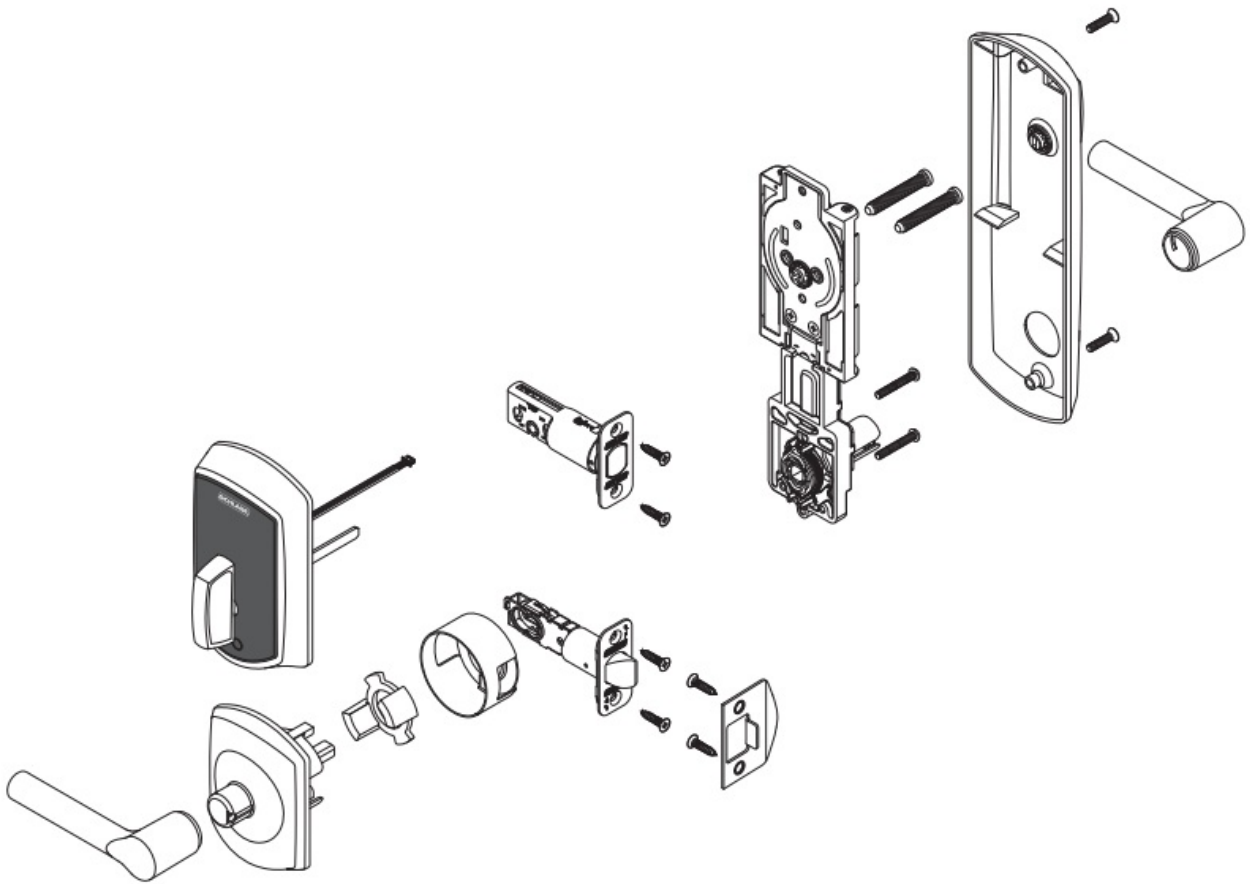
### Specifications

- Model Number: 47327850 FE410F
- Brand: Schlage Control™
- Type: Smart Interconnected Lock
- Backset: 2 3/8 OR 2 3/4 (60 mm OR 70 mm)
- Door Thickness: 1 3/8 to 1 3/4 (35 mm to 44 mm)

Scan for user guide, warranty and [more!alle.co/control](https://more!alle.co/control)



## Installation Instructions



**Credentials** not included.

## Important installation notes

### WARNING

Warnings indicate potentially hazardous conditions, which if not avoided or corrected, may cause death or serious injury.

### CAUTION

Cautions indicate potentially hazardous conditions, which if not avoided or corrected, may cause minor or moderate injury. Cautions may also warn against unsafe practices.

### NOTICE

Notices indicate a condition that may cause equipment or property damage only.

## Determine the Handing

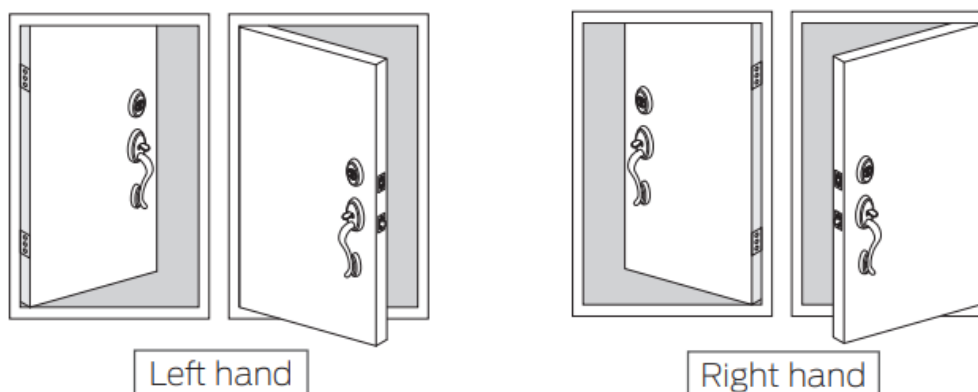
### CAUTION

If the handing is incorrect, locking and unlocking could be reversed, resulting in an

unsecured residence.

Determine the handing of your door. Directions for changing lock handing are provided throughout the instructions.

## Outside of door

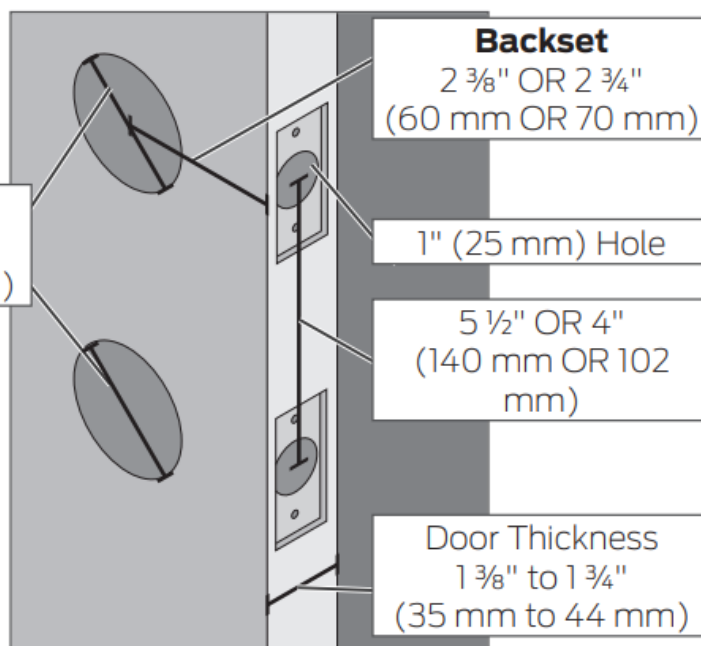


## Check door dimensions.

See [alle.co/control](http://alle.co/control) for door preparation instructions if dimensions are different.

**Crossbore**  
Diameter  
2 1/8" (53 mm)

- ① **The firecup cannot be installed on a 1 3/8" (35 mm) thick door, and the lock will not retain the UL rating.**



## Install the lock

### CAUTION

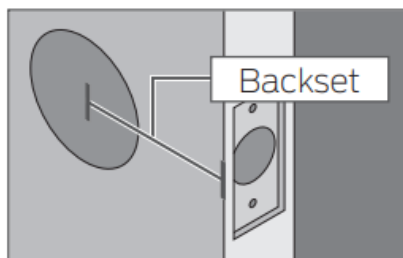
Install with door open to avoid lockout. Do NOT use a power drill for installation!

## Install bolt and strike.

## CAUTION

Use provided bolt!

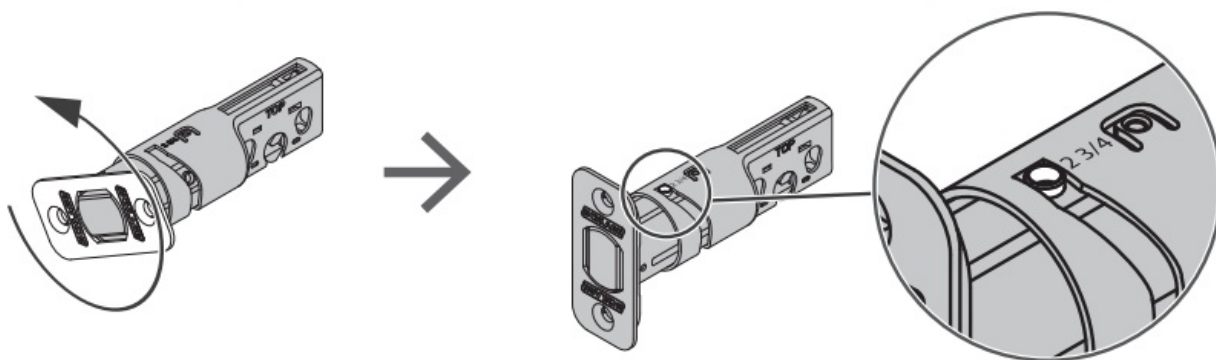
- Adjust bolt length, if necessary.



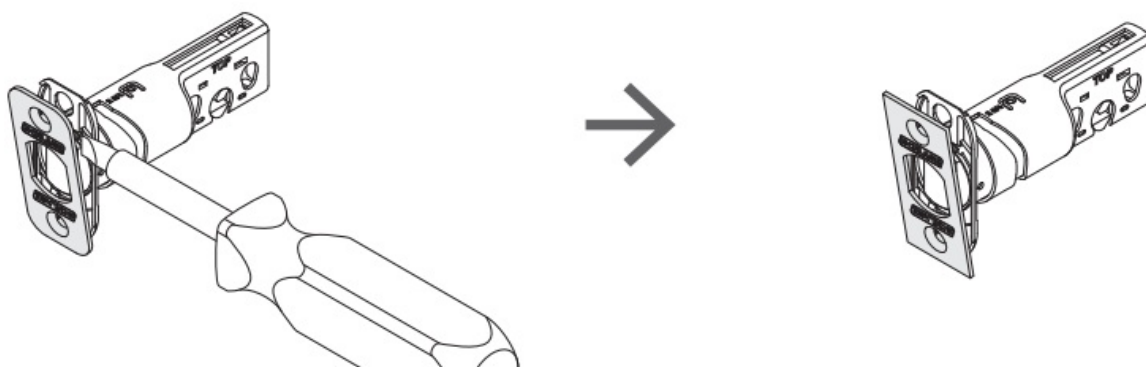
- Measure the backset. If the measurement is 2 3/8" (60 mm) no adjustment is necessary.

Twist the faceplate.

Make sure the button pops into place.

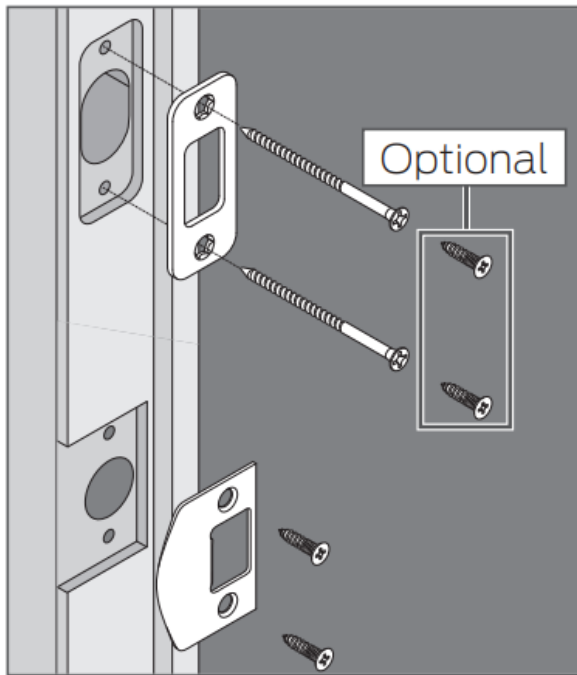


- If the measurement is 2 3/4" (70 mm), extend the bolt.
- If desired, change to the square-corner faceplate.
  - Use a flathead screwdriver to pry the faceplate off.
  - Press the square-corner faceplate into place.

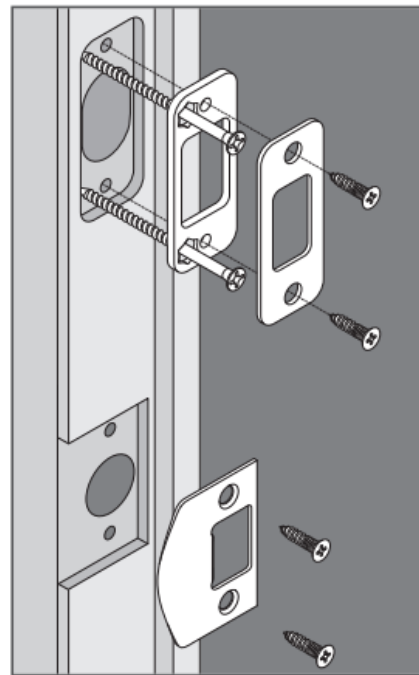


- Install the fire cup into the lower hole.
  - DO NOT install the fire cup on a 1 3/8" thick door.



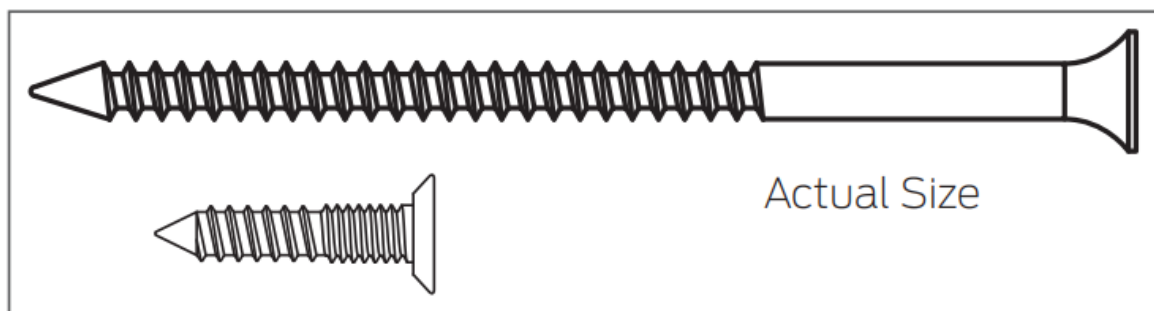


OR



**Reinforcement strike**

**Strike and reinforcement plate**

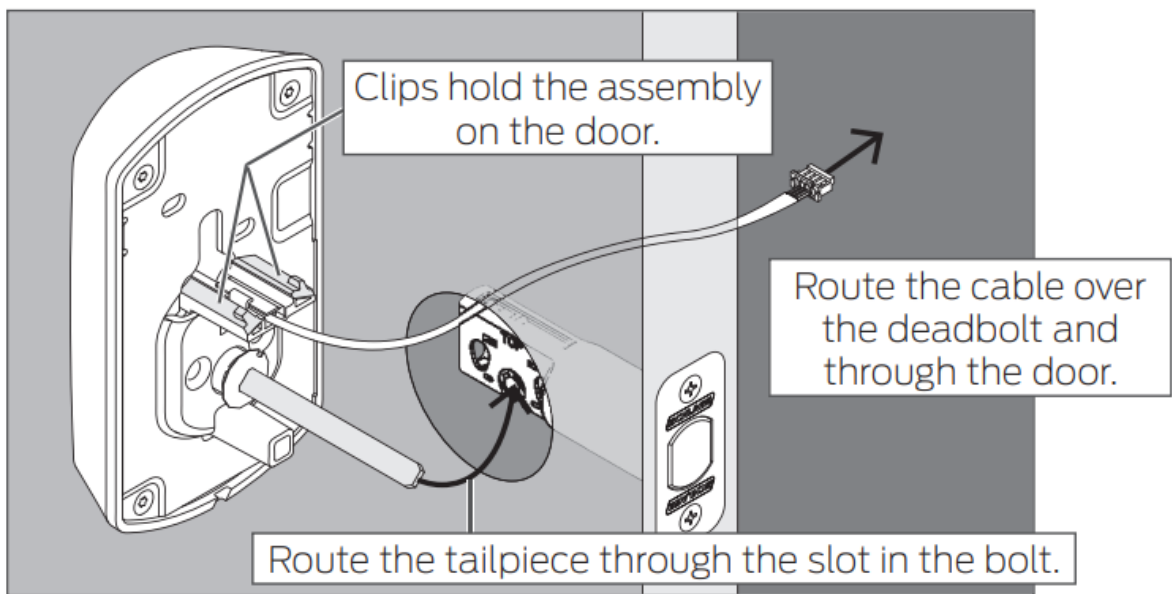


**Install the top part of the lock.**

### CAUTION

If the bolt does not remain retracted throughout installation, locking and unlocking could be reversed, resulting in an unsecured residence.

- Install the outside deadbolt assembly on the outside of the door.

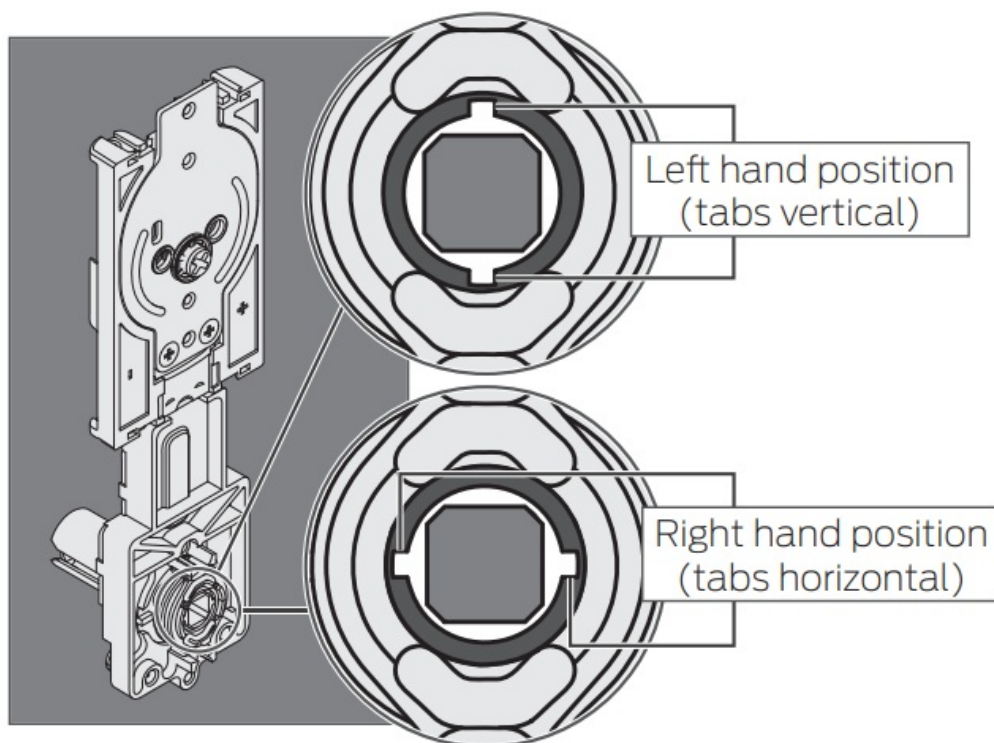


- Adjust the spindle on the inside assembly, if necessary.

### CAUTION

If the spindle is not in the correct position, locking and unlocking could be reversed, resulting in an unsecured residence.

See Determine the Handing to determine the hand of your door.

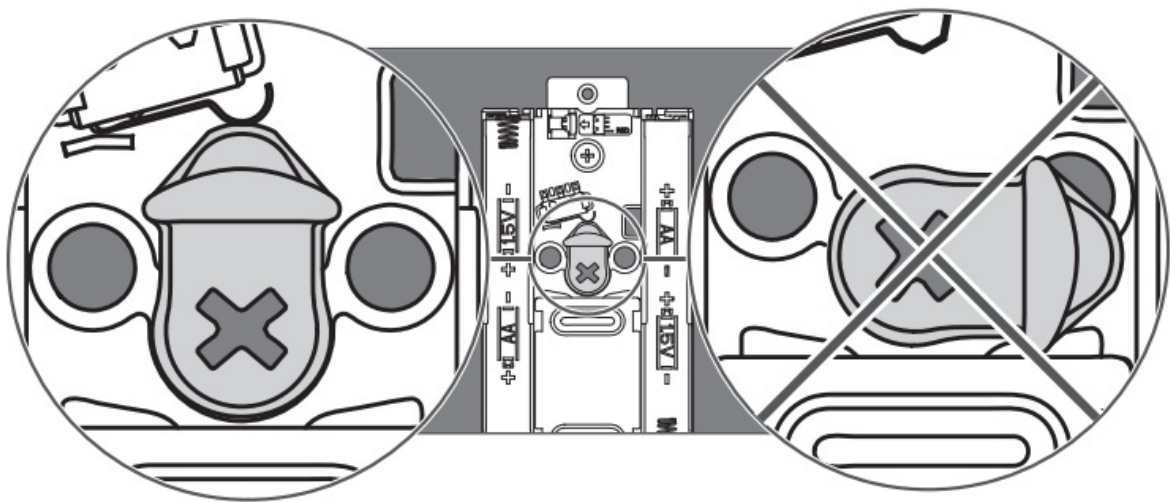


- Make sure the cam on the inside assembly is in the correct position.

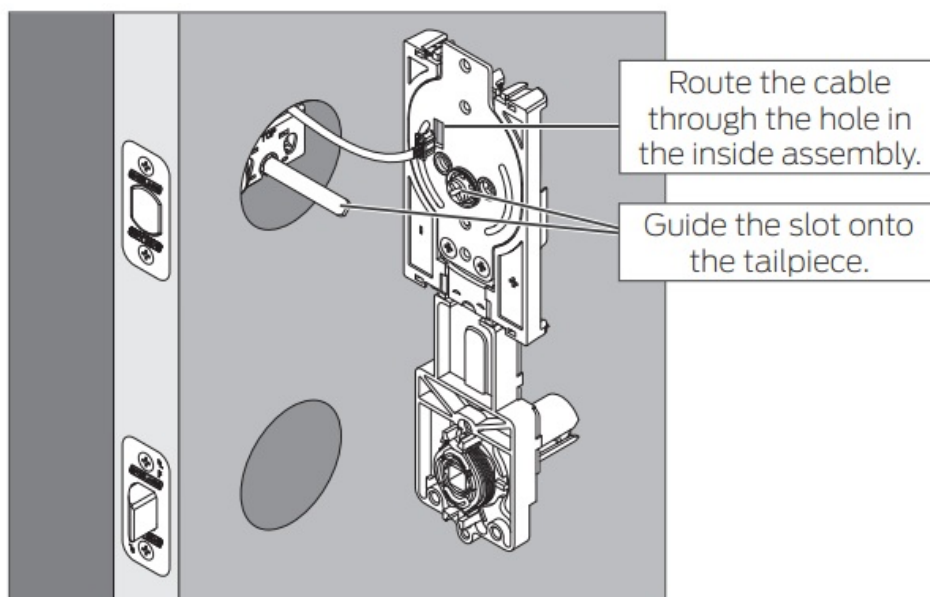
### CAUTION



If the cam is not in the correct position during installation, locking and unlocking could be reversed, resulting in an unsecured residence.

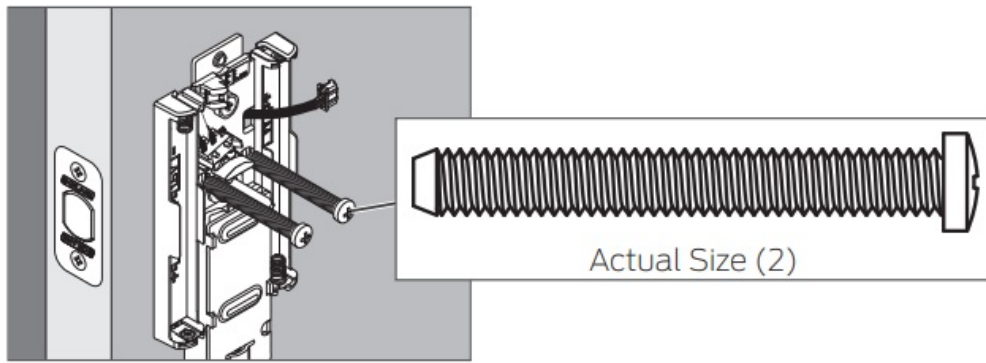


- Install the inside assembly on the inside of the door.
  - Bolt must remain retracted!
- 



Secure the inside assembly with the two top screws.

- If the screw holes are blocked by the cam, see step 2c.



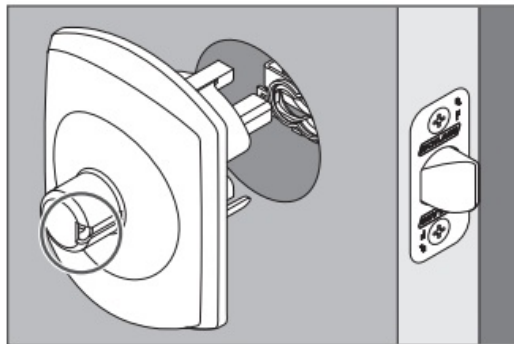
## Install the bottom part of the lock

- Install the handing plate into the lever assembly.
  - See Determine the Handing to determine the hand of your door.

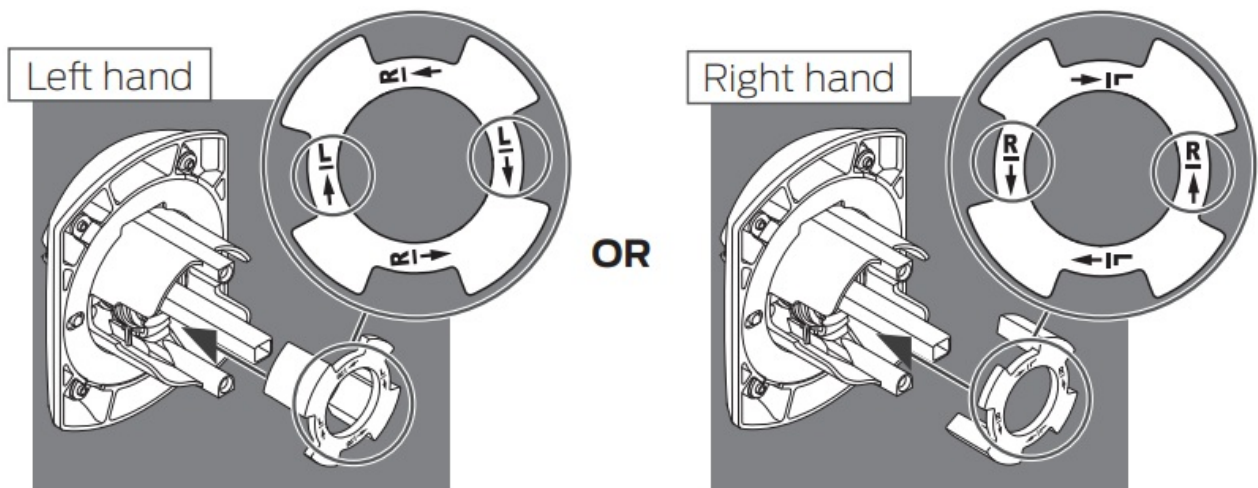
### CAUTION

If the handing plate is not in the correct position, locking and unlocking could be reversed, resulting in an unsecured residence.

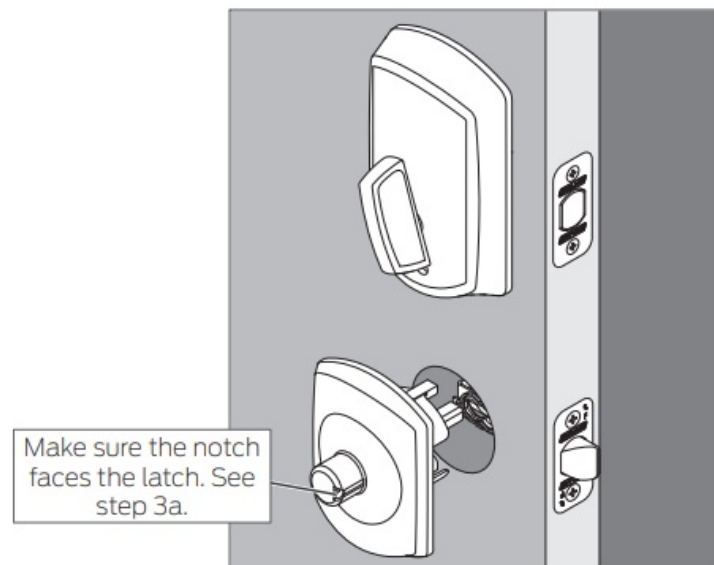
1. Rotate the assembly so the notch faces the latch



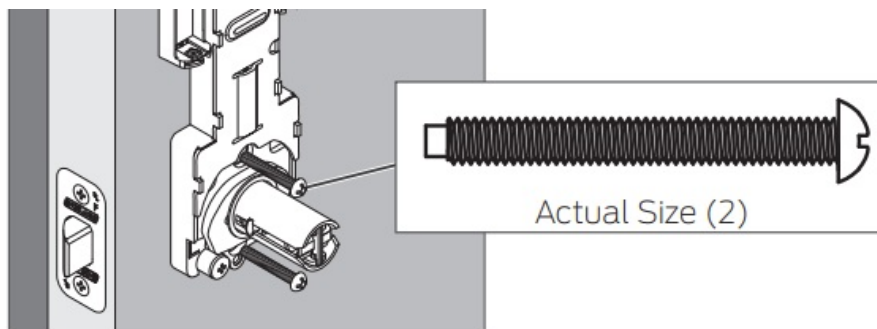
2. Place the handing plate in the correct position. Press handing plate all the way into the chassis.



- Install the lever assembly on the outside of the door.
  - The lever will be installed later.



- Secure the inside assembly with the two bottom screws.

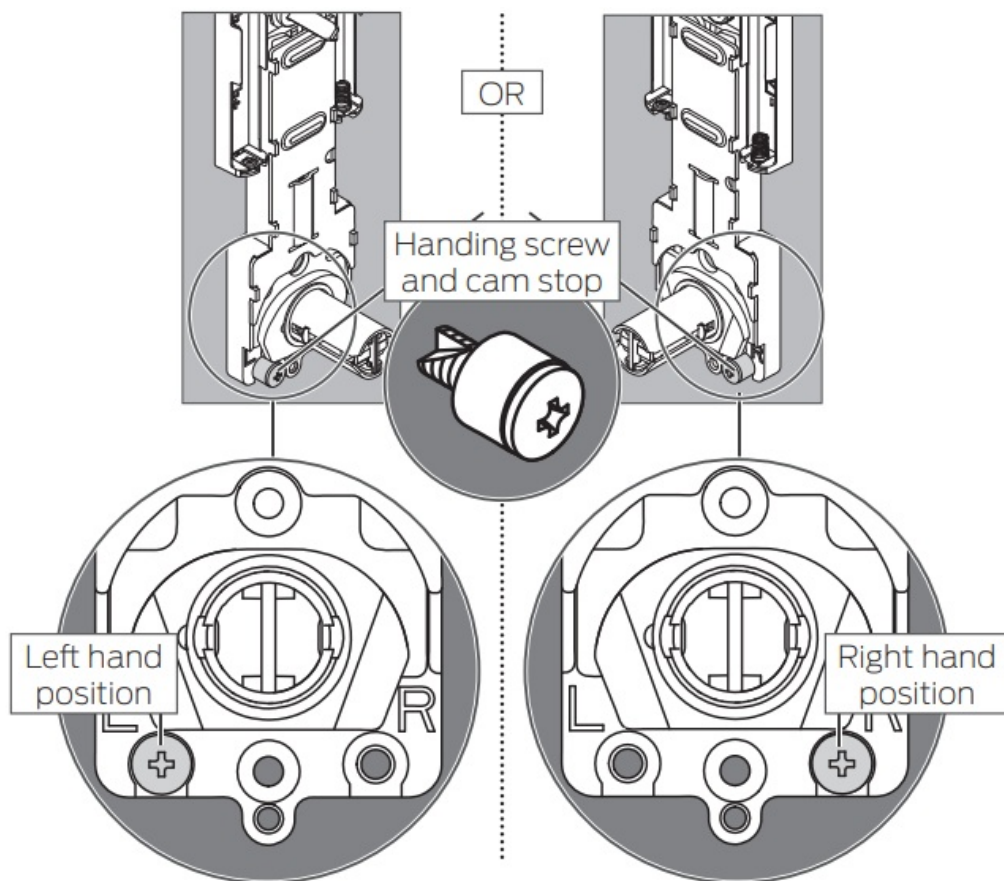


- Move the handing screw and cam stop to the appropriate position, if necessary.

See Determine the Handing to determine the hand of your door.

## CAUTION

If the handing screw is not in the correct position, locking and unlocking could be reversed, resulting in an unsecured residence.

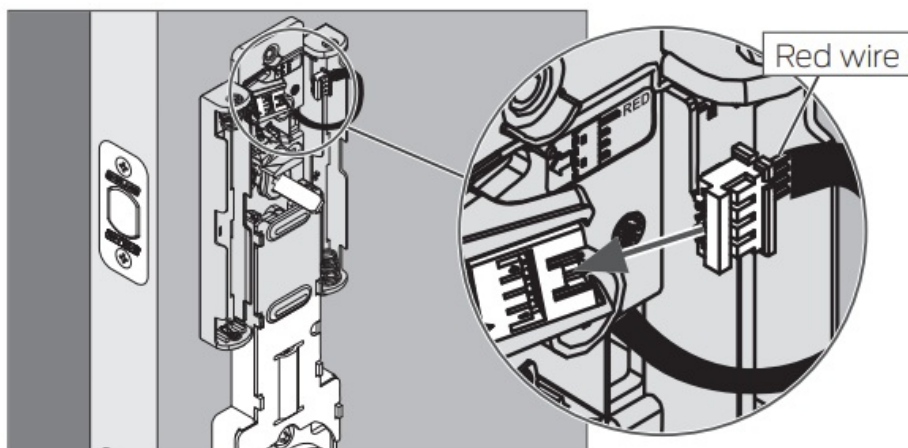


## Apply power to the lock

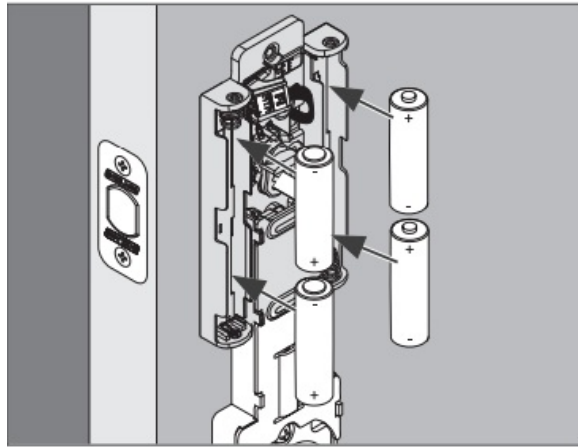
- Connect the cable to the inside assembly.

### CAUTION

The connector fits only one way. DO NOT FORCE!

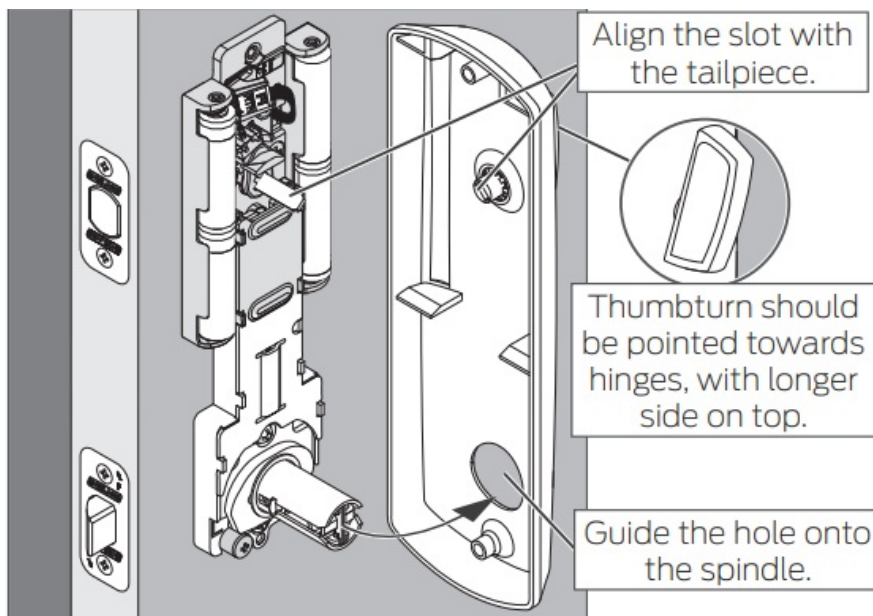


- Install the batteries.

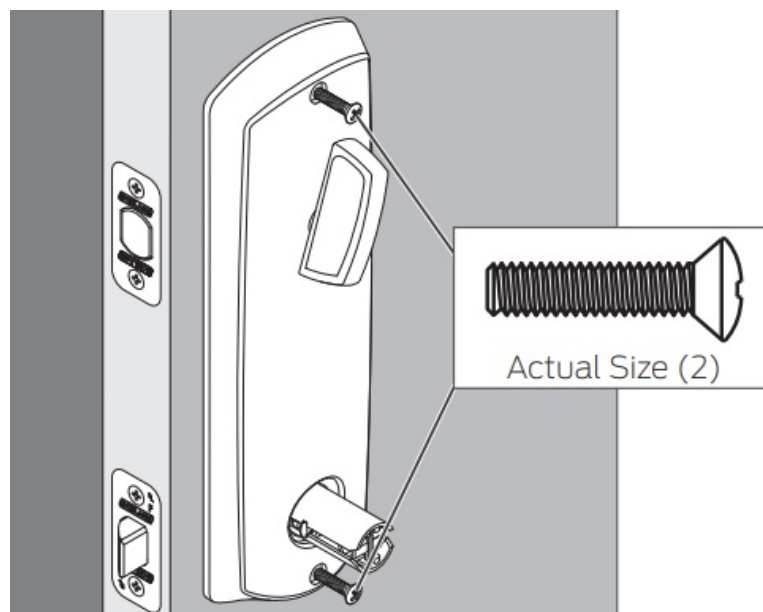


## Install the inside cover

- Place the inside cover on the door.

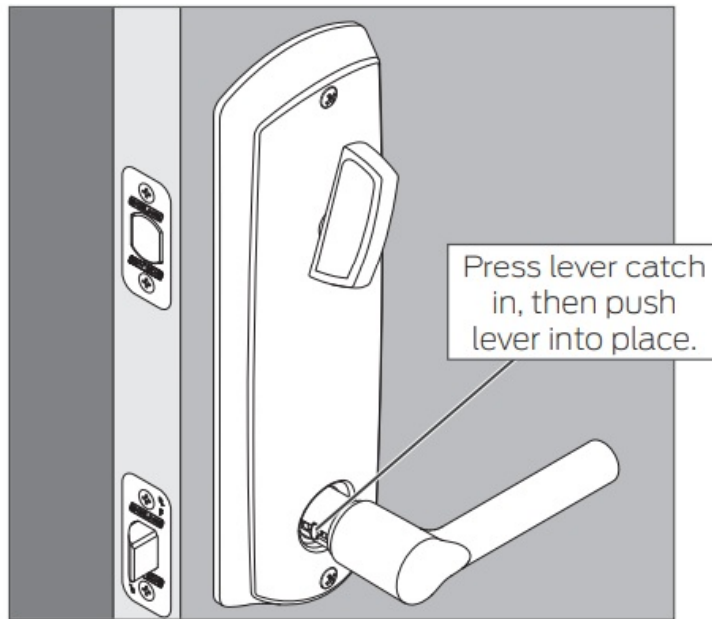


- Secure the inside cover with two screws.

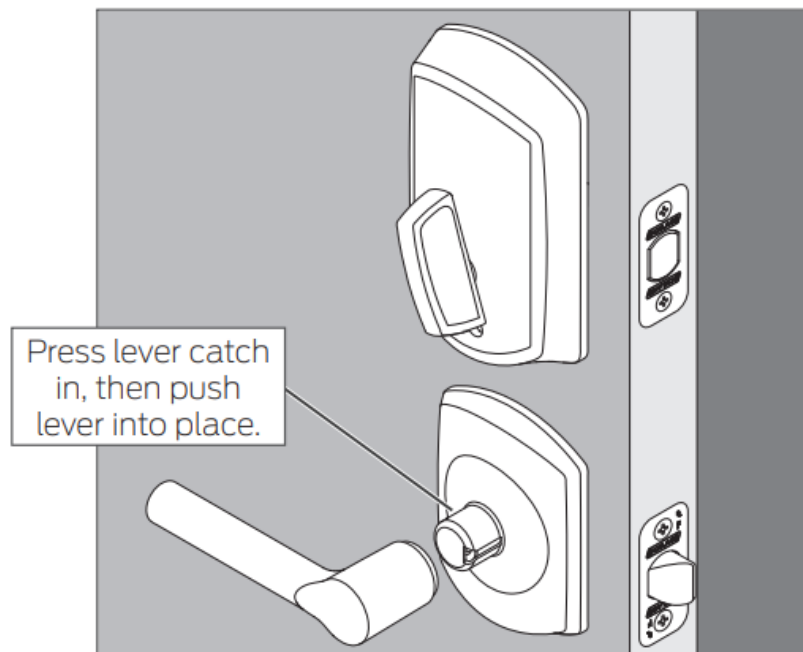


## Install the levers.

- Install the lever on the inside of the door.



- Install the lever on the outside of the door.



## Test the lock

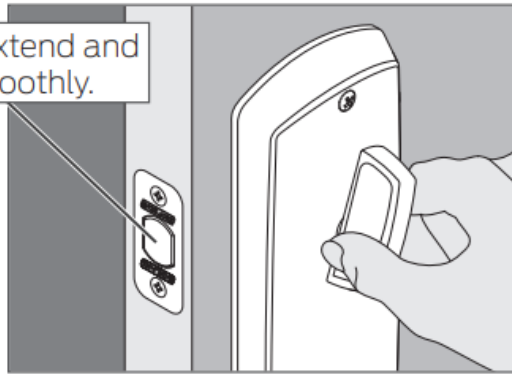
- Extend and then retract the bolt using the inside bolt throw.

-



- ① **Outside bolt throw should spin freely until a valid credential is presented.**

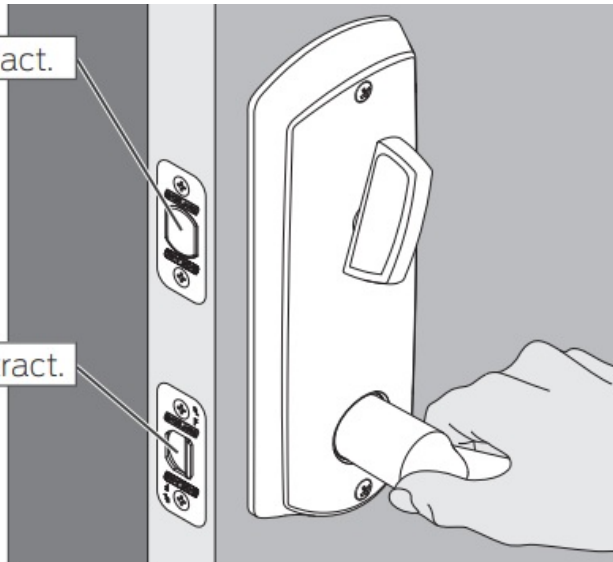
Bolt should extend and retract smoothly.



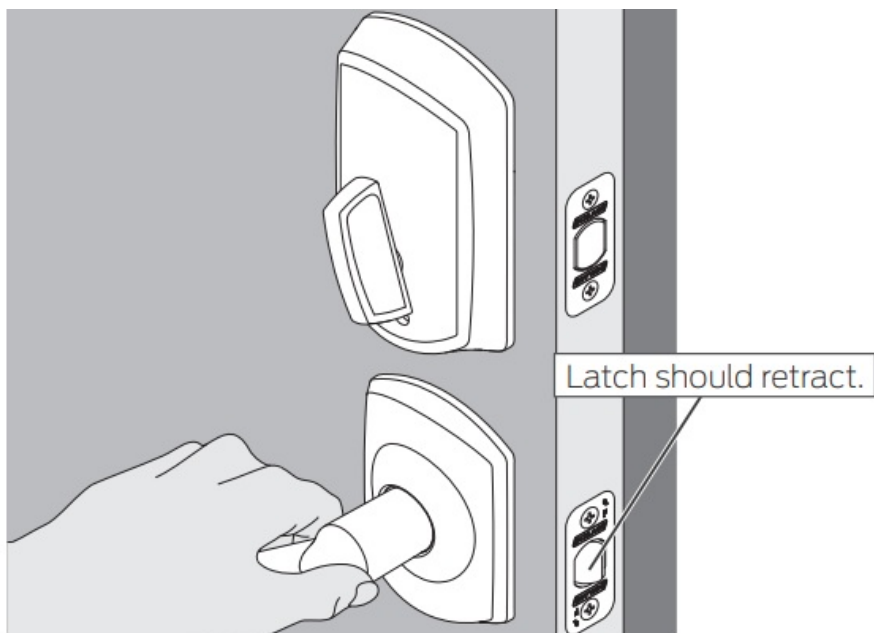
Extend the bolt using the bolt throw and then rotate the inside lever.

Bolt should retract.

Latch should retract.



- Rotate the outside lever.



If the lock did not operate as described, please see Troubleshooting.

**Set up the lock.**



Scan for user guide, warranty and [more!alle.co/control](https://more!alle.co/control)

## Troubleshooting

| Problem  | Solution   | Step              |
|--|--|-------------------|
| Inside lever will not rotate up.                                       | Lock is installed correctly. Inside lever should not rotate up.  | —                 |
| Inside lever rotates up. Inside lever should not rotate up.            | Check the handing.   | <b>2b, 3a, 3d</b> |
| Inside lever will not rotate down.                                     | Check the handing.   | <b>2b, 3a, 3d</b> |
| Rotating the inside lever down does not retract the latch.             | Check the handing.   | <b>2b, 3a, 3d</b> |
| Outside lever will not rotate up.                                      | Lock is installed correctly. Outside lever should not rotate up. | —                 |
| Outside lever rotates up. Outside lever should not rotate up.          | Check the handing.   | <b>2b, 3a, 3d</b> |
| Outside lever will not rotate down.                                    | Check the handing.   | <b>2b, 3a, 3d</b> |
| When in the locked state, rotating the outside lever unlocks the door. | Check the handing.   | <b>2b, 3a, 3d</b> |



|  |   |           |
|--|---|-----------|
| eadbolt without a valid credential being presented.  | Make sure the cam is in the correct position.                     | <b>2c</b> |
| When in the locked state, presenting a valid credential and rotating the outside thumbturn does not unlock the deadbolt. | Make sure the cam is in the correct position.                     | <b>2c</b> |
|  | Make sure the batteries are installed correctly and are not dead. | <b>4b</b> |
|  | Make sure the cable is connected.                                 | <b>4a</b> |

## Customer Service

1-[877-671-7011](tel:877-671-7011)

[www.allegion.com/us](http://www.allegion.com/us)

## Frequently Asked Questions

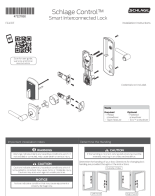
- **Q: What should I do if my door dimensions are different from the specified range?**

**A:** If your door dimensions do not fall within the recommended range, refer to [alle.co/control](http://alle.co/control) for additional instructions on door preparation.

- **Q: Can I use a power drill for installation?**

**A:** No, it is advised not to use a power drill for installation to prevent potential issues and ensure proper setup of the lock.

## Documents / Resources

|   |   |
|---|---|
|  | <p><a href="#">SCHLAGE FE410F Control Smart Interconnected Lock [pdf]</a> Installation Guide</p> <p>FE410F Control Smart Interconnected Lock, FE410F, Control Smart Interconnected Lock, Smart Interconnected Lock, Interconnected Lock, Lock</p> |
|---|---|

## References

- [User Manual](#)

■ Schlage

🔑 Control Smart Interconnected Lock, FE410F, FE410F Control Smart Interconnected Lock, Interconnected Lock, Lock, Schlage, Smart Interconnected Lock

---

## Leave a comment

Your email address will not be published. Required fields are marked \*

Comment \*

Name

Email

Website

☐ Save my name, email, and website in this browser for the next time I comment.

**Post Comment**

**Search:**

**Search**

[Manuals+](#) | [Upload](#) | [Deep Search](#) | [Privacy Policy](#) | [@manuals.plus](#) | [YouTube](#)

This website is an independent publication and is neither affiliated with nor endorsed by any of the trademark owners. The "Bluetooth®" word mark and logos are registered trademarks owned by Bluetooth SIG, Inc. The "Wi-Fi®" word mark and logos are registered trademarks owned by the Wi-Fi Alliance. Any use of these marks on this website does not imply any affiliation with or endorsement.

