



# SCHLAGE CS210 Series Interconnected Lockset User Manual

[Home](#) » [Schlage](#) » SCHLAGE CS210 Series Interconnected Lockset User Manual 

## Contents

- [1 SCHLAGE CS210 Series Interconnected Lockset](#)
- [2 Product Information](#)
- [3 Product Usage Instructions](#)
- [4 Introduction](#)
- [5 Standard Features](#)
- [6 Lock assembly drawing](#)
- [7 Cylinder options](#)
- [8 Latches](#)
- [9 Strikes](#)
- [10 Parts](#)
- [11 Center-to-center conversion](#)
- [12 Handing](#)
- [13 Finishes](#)
- [14 Documents / Resources](#)
  - [14.1 References](#)



**SCHLAGE CS210 Series Interconnected Lockset**



## Product Information

This manual contains a complete listing of the CS210 Series (Grade 2) interconnected lock parts and assemblies manufactured by the Schlage Lock Company. This manual lists components of CS210 Series locks manufactured after December 2010. Exploded views of the lock trim assemblies are provided with an accompanying chart to identify parts for replacement purposes. In addition, this manual provides lock trim ordering procedures and general cylinder information for the CS210 Series interconnected locks.

### Standard Features:

| Certifications | Deadbolt   | Latchbolt | Strike | Backset | Cylinder | Door Range |
|----------------|------------|-----------|--------|---------|----------|------------|
|                | CS210-B500 | CS210-B60 |        |         |          |            |

## Product Usage Instructions

### CS210-B500:

Deadbolt, entrance, single locking with commercial spin ring. The deadbolt is operated by key from the outside or by turn from the inside. The bolt automatically deadlocks when fully thrown. The latch is retracted by a lever from either side. Turning the inside lever retracts the deadbolt and latch simultaneously for immediate exit.

### CS210-B60:

Description: Housing assembly, outside B60 Fire cup Interconnect assembly Screws, mounting deadbolt UL cup Inside chassis Screws, mounting Escutcheon, Camelot design (shown) Escutcheon, Plymouth design Escutcheon thumb-turn plate assembly Screws, escutcheon plate Levers kit (2 levers) Rose, Plymouth design Rose, Saturn design Reinforcing ring, rose

## Introduction

This manual contains a complete listing of CS210 Series (Grade 2) interconnected lock parts and assemblies manufactured by the Schlage Lock Company. This manual lists components of CS210 Series locks manufactured after December 2010.

The CS210 Series features two outside deadbolt options, B500 (commercial spin ring) or B60 (residential spin ring), and two inside escutcheon design options (Camelot (CAM) or Plymouth (PLY)). The adjustable escutcheon

plate allows the lock to support either 4" or 5½" door preparation. Exploded views of the lock trim assemblies are provided with an accompanying chart to identify parts for replacement purposes. In addition, this manual provides lock trim ordering procedures and general cylinder information for the CS210 Series interconnected locks.

## Standard Features

|                  |   |
|------------------|---|
| Certifications   | ANSI A156.12-2013, BHMA Grade 2 operational and security. UL Listed for 3-hour fire door. With SFIC interchangeable core cylinders: Grade 3 security. |
| Deadbolt         | 1 x 2¼", dual option faceplate, (square corner standard, round corner included in package), 1" housing diameter, 1" throw.                            |
| Latchbolt        | 1" x 2¼" dual option faceplate (square corner standard, round corner included in package). 1" edge bore required.                                     |
| Strike           | 11/8" x 2¾", Square corner, box (deadbolt)<br>15/8" x 2¼", 11/8" Square corner, full lip, no box (deadlatch)  |
| Backset          | Adjustable backset, 23/8" or 23/4"  |
| Cylinder         | 6-Pin solid brass, keyed 6-pin, S123 keyway, keyed different (KD)**   |
| Center-to-center | Fits 4" or 5½" (factory default) center-to-center door preparation.***  |
| Door Range       | 13/4" to 2" (13/8" available when specified)  |
| Keys             | Two nickel silver cut keys per lock, 6-pin, S123 section  |

\* Locks are furnished with standard features unless otherwise specified.

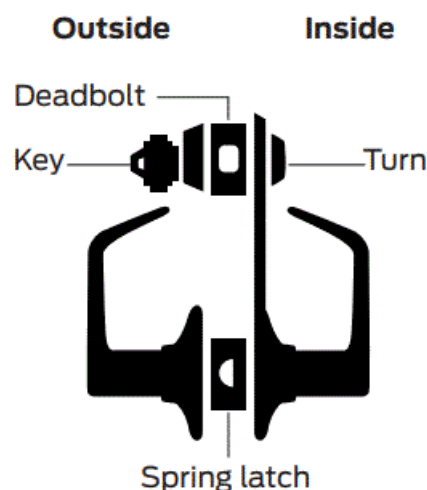
Items specified in the C keyway will be furnished with cylinder-keyed 5-pin and 5-pin keys unless otherwise specified.

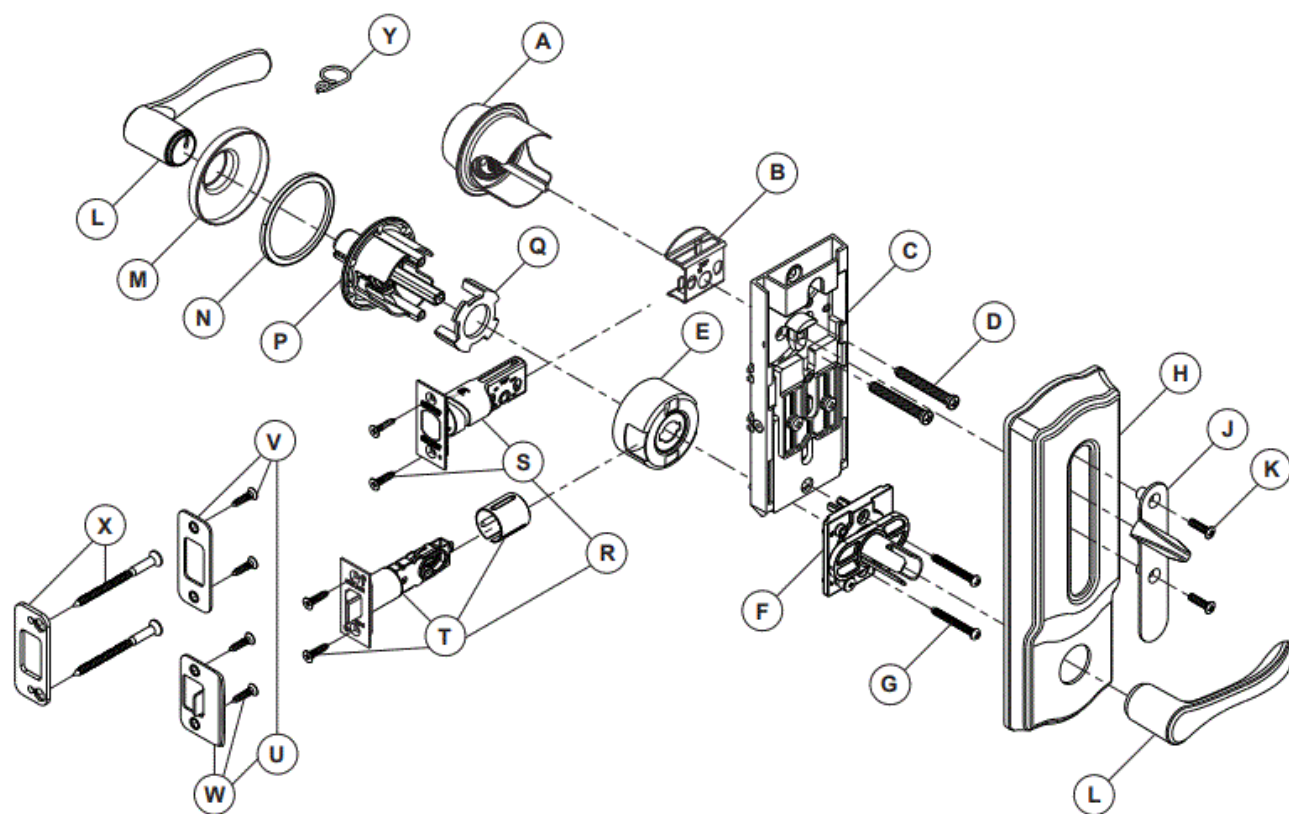
See page 15 for center-to-center conversion instructions.

## Lock assembly drawing

**CS210-B500** Deadbolt, entrance, single locking with commercial spin ring

The deadbolt is operated by key from the outside or by turn from the inside. The bolt automatically deadlocks when fully thrown. The latch is retracted by a lever from either side. Turning the inside lever retracts the deadbolt and latch simultaneously for immediate exit.





| Letter | Description                         | Part No.     | Letter | Description  | Part No. |  |
|--------|-------------------------------------|--------------|--------|--|----------|--|
| A* ◇   | Housing assembly, outside B500      | S206-501     | P      | Outside chassis  | F206-496 |  |
| B      | Fire cup                            | B520-657     | Q      | Plate, handing   | F506-867 |  |
| C      | Interconnect assembly               | S206-502     | R*     | Deadbolt and spring latch combination, 23/8" or 2 3/4" backset, dual option, 1" x 2 1/4" standard (square corner standard, round corner included in package) | 12-339   |  |
| D      | Screws, mounting dead bolt          | B600-101     |        |  |          |  |
| E      | UL cup                              | S605-206     |        |  |          |  |
| F      | Inside chassis                      | F206-494     | S*     | Deadbolt, 1" x 2 1/4" standard (square corner standard, round corner included in package), 23/8" or 2 3/4" backset   | 12-340   |  |
| G      | Screws, mounting                    | F506-278     |        |  |          |  |
| H**    | Escutcheon, Camelot design (shown)  | F506-864-CAM | T*     | Spring latch, 1" x 2 1/4" standard (square corner standard, round corner included in package), 23/8" or 2 3/4" backset                                       | 16-260   |  |
|        | Escutcheon, Plymouth design         | F506-864-PLY |        |  |          |  |
| J*     | Escutcheon thumbturn plate assembly | F206-493     | U*     | Strike, combination  | 10-121   |  |
| K*     | Screws, escutcheon plate            | B520-621     | V*     | Strike, deadbolt   | 10-094   |  |
| L**    | Levers kit (2 levers)               | 06-242       | W*     | Strike, latch  | 10-026   |  |
| M**    | Rose, Plymouth design               | 08-029-P LY  | X      | Strike reinforcer  | 37-016   |  |
|        | Rose, Saturn design                 | 08-029-S AT  | Y      | Pin wrench   | N523-108 |  |
| N      | Reinforcing ring, rose              | A501-945     |        |  |          |  |

\* Specify finish.

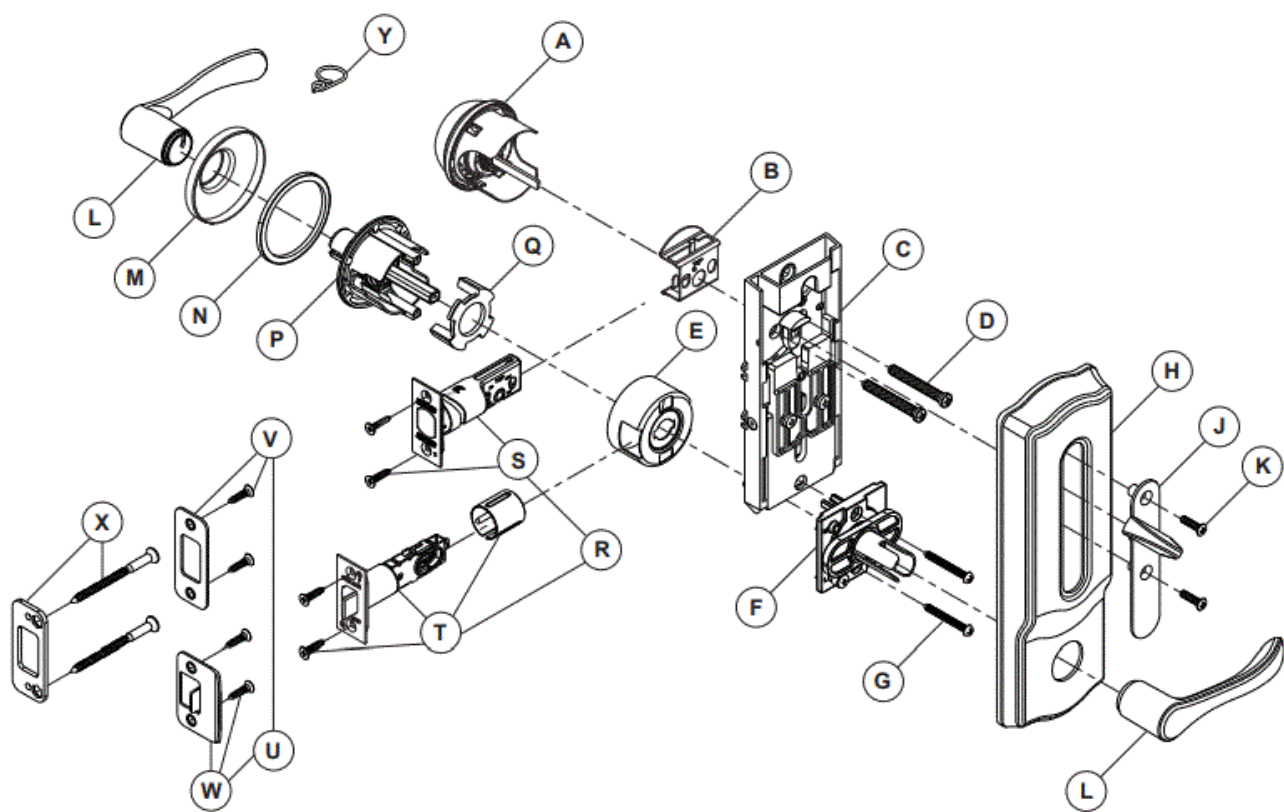
\*\* Specify design and finish.

list of interchangeable core and thin door housing assemblies.

**Notes:** See page 7 for details of all available lever designs.

For handed lever designs, one right-handed and one left-handed lever are supplied.

## CS210-B60



| Letter | Description                         | Part No.     | Letter | Description  | Part No. |  |
|--------|-------------------------------------|--------------|--------|--|----------|--|
| A* ◇   | Housing assembly, outside B60       | B300-058     | P      | Outside chassis  | F206-496 |  |
| B      | Fire cup                            | B520-657     | Q      | Plate, handing   | F506-867 |  |
| C      | Interconnect assembly               | S206-502     | R*     | Deadbolt and spring latch combination, 23/8" or 23/4" backset, dual option, 1" x 21/4" standard (square corner standard, round corner included in package) | 12-339   |  |
| D      | Screws, mounting dead bolt          | B600-101     |        |  |          |  |
| E      | UL cup                              | S605-206     |        |  |          |  |
| F      | Inside chassis                      | F206-494     | S*     | Deadbolt, 1" x 21/4" standard (square corner standard, round corner included in package)   | 12-340   |  |
| G      | Screws, mounting                    | F506-278     |        |  |          |  |
| H**    | Escutcheon, Camelot design (shown)  | F506-864-CAM | T*     | Spring latch, 1" x 21/4" standard (square corner standard, round corner included in package)   | 16-260   |  |
|        | Escutcheon, Plymouth design         | F506-864-PLY |        |  |          |  |
| J*     | Escutcheon thumbturn plate assembly | F206-493     | U*     | Strike, combination  | 10-121   |  |
| K*     | Screws, escutcheon plate            | B520-621     | V*     | Strike, deadbolt   | 10-094   |  |
| L**    | Levers kit (2 levers)               | 06-242       | W*     | Strike, latch  | 10-026   |  |
| M**    | Rose, Plymouth design               | 08-029-P LY  | X      | Strike reinforcer  | 37-016   |  |
|        | Rose, Saturn design                 | 08-029-S AT  | Y      | Pin wrench   | N523-108 |  |
| N      | Reinforcing ring, rose              | A501-945     |        |  |          |  |

\* Specify finish.

\*\* Specify design and finish.

list of interchangeable core and thin door housing assemblies.

**Notes:** See page 7 for details of all available lever designs.

For handed lever designs, one right-handed and one left-handed lever are supplied.

## Levers

Split lever designs and finishes are available. Please see the Schlage Commercial Price Book for details.

**All levers are available in the following finishes:**

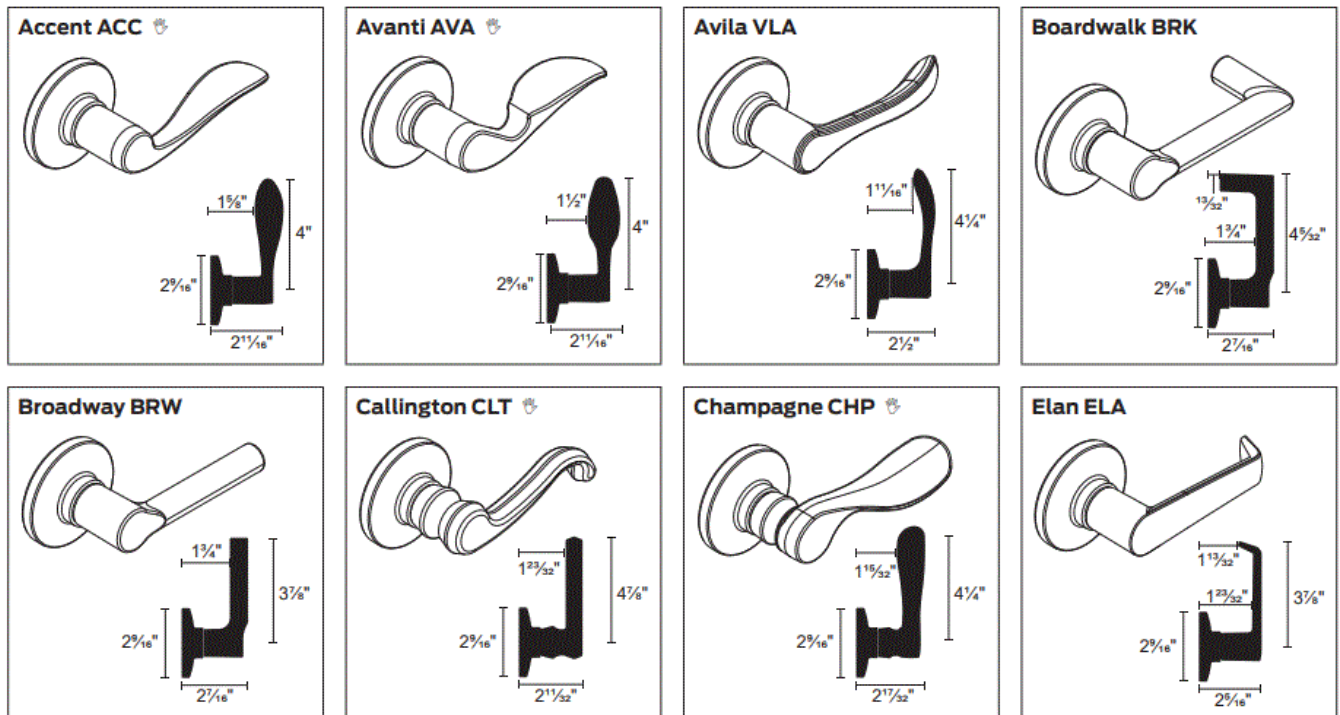
- 605 Bright Brass
- 609 Antique Brass
- 619 Satin Nickel
- 622 Matte Black
- 625 Bright Chrome

- 626 Satin Chrome
- 643e Aged Bronze

## Lever designs

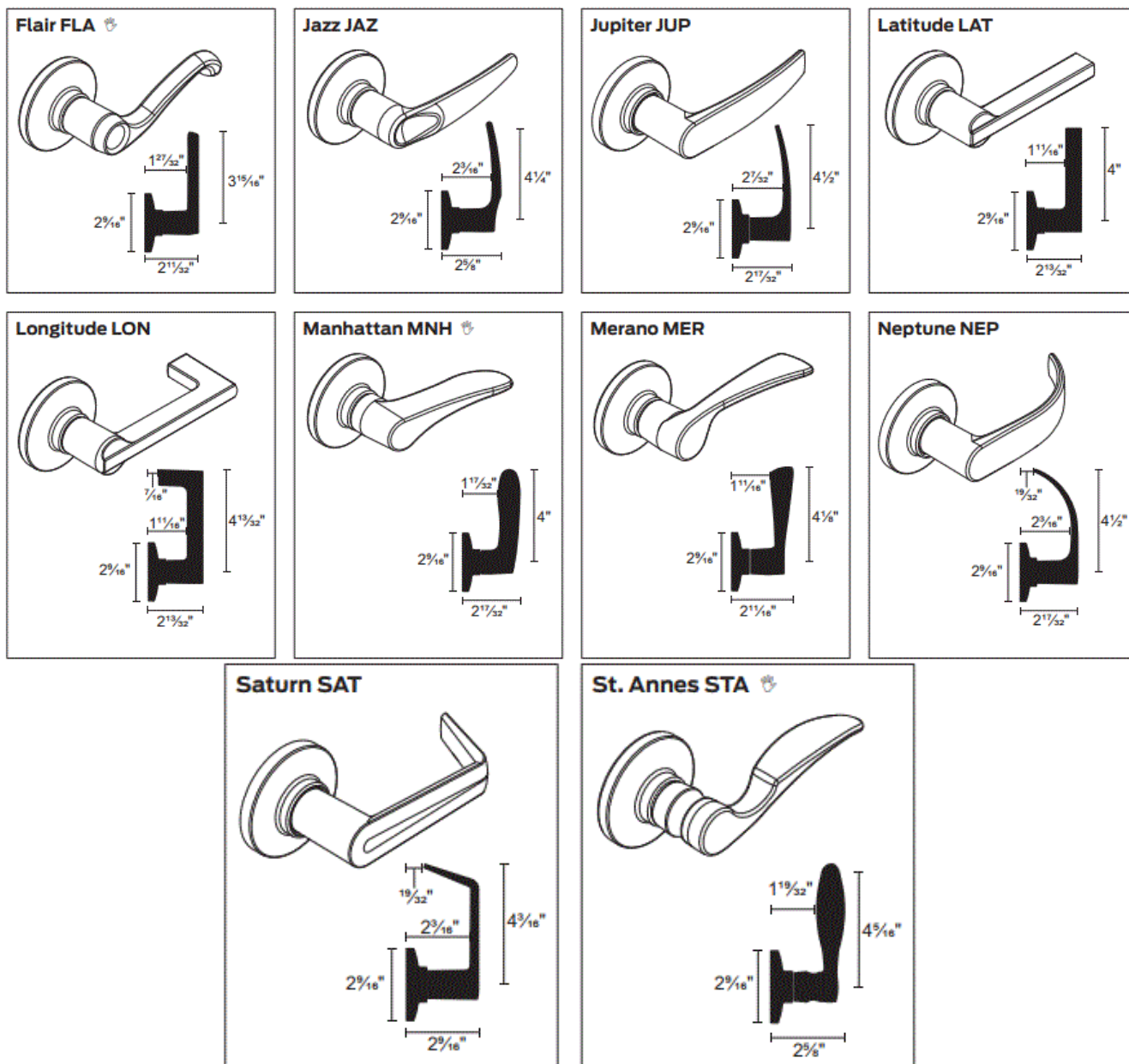
- indicates handing must be specified.

Boardwalk and Longitude levers comply with California State code for return within  $\frac{1}{2}$ " of the door face.



**Note:** The rose-lever combination must be examined when changing levers or roses. Crimp-on roses were transitioned to snap-on roses in August 2015. Snap-on roses can be identified by retention dimples at the base of the rose. If not compatible, an outside chassis with crimp-on rose may be updated with the following parts: 06-242, levers; 08-029 rose; A501-945 reinforcement ring; F206-496 outside chassis assembly.





**Note:** The rose-lever combination must be examined when changing levers or roses. Crimp-on roses were transitioned to snap-on roses in August 2015. Snap-on roses can be identified by retention dimples at the base of the rose. If not compatible, an outside chassis with crimp-on rose may be updated with the following parts: 06-242, levers; 08-029 rose; A501-945 reinforcement ring; F206-496 outside chassis assembly.

## Cylinder options

Locks are furnished standard with P6 cylinder (conventional 6-pin) with open keyway. Optional conventional, FSIC, and SFIC cylinders are available. See the Schlage Commercial Price Book for complete cylinder and keying details.

**Note:** SFIC cylinders are not available with B60 (residential) cylinder housing assembly.

| Description   | Specify |
|---|---------|
| Conventional 6-pin cylinder (standard)              | P6      |
| Conventional 5-pin cylinder                         | P       |
| Less conventional cylinder                          | L       |
| Everest 29™ SL conventional cylinder, 7-pin         | Z       |
| Everest 29 SL FSIC (full size interchangeable core) | R       |
| Construction core FSIC                              | T       |
| Everest 29 SL FSIC, 7-pin                           | M       |
| Less FSIC cylinder                                  | J       |
| Everest 29 SFIC (small format interchangeable core) | G       |
| Refundable construction SFIC                        | H       |
| Disposable construction SFIC                        | BDC     |
| Less SFIC cylinder                                  | B       |

\* Restricted keyways include Everest 29 R and T keyways, Everest B and D keyways, and classic (reverse/quad/numbered) keyways.

## Latches

### Specify finish

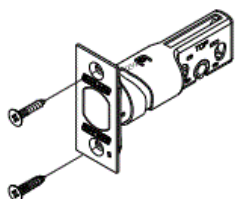
12-339 dual option, standard

23/8" or 23/4" backset, (one each deadbolt and spring latch or deadlatch)

#### 12-340 Deadbolt

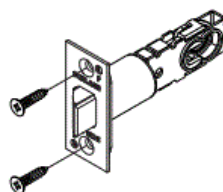
1" x 21/4" faceplate, square corner, (round corner included)

1" housing diameter, 1" throw



#### 16-260 Spring latch

1" x 21/4" faceplate, square corner, (round corner included)

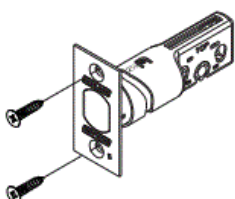


16-483 combo latch, optional

23/8" or 23/4" backset (one each deadbolt and deadlatch)

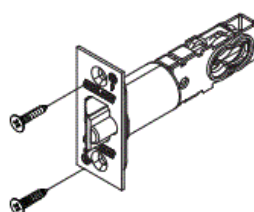
#### 12-291 Deadbolt

11/8" x 21/4" square corner, 1" housing diameter



#### 16-228 Deadlatch

11/8" x 21/4" square corner

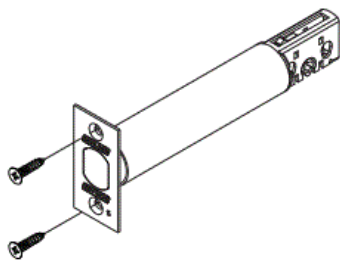


16-484 combo latch, optional

5" backset (one each deadbolt and deadlatch)\*

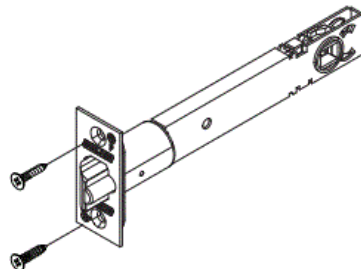
### 12-633 Deadbolt

1 $\frac{1}{8}$ " x 2 $\frac{1}{4}$ " square corner, 1" housing diameter



### 16-132 Deadlatch

1 $\frac{1}{8}$ " x 2 $\frac{1}{4}$ " square corner



## Strikes

### Combo strikes

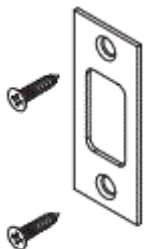
One each deadbolt strike and deadlatch strike

| Strike combo number      | Deadbolt strike | Deadlatch strike | Strike combo number | Deadbolt strike | Deadlatch strike |
|--------------------------|-----------------|------------------|---------------------|-----------------|------------------|
| 10-109                   | 10-094          | 10-001           | 10-123              | 10-092          | 10-027           |
| <b>10-121 (standard)</b> | 10-094          | 10-026           | 10-124              | 10-095          | 10-026           |
| 10-122                   | 10-116          | 10-027           |                     |                 |                  |

## Deadbolt strikes and strike reinforcement

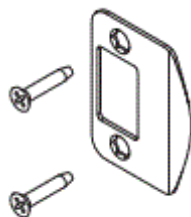
### 10-094, standard

1 $\frac{1}{8}$ " x 2 $\frac{3}{4}$ " Square corner, no lip



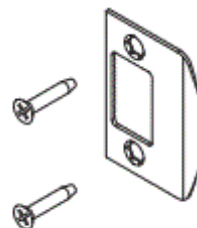
### 10-092

1 $\frac{5}{8}$ " x 2 $\frac{1}{4}$ ",  $\frac{1}{4}$ " Radius round corner, full lip, 1 $\frac{1}{8}$ " lip length, no box



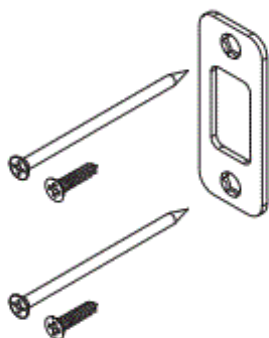
### 10-095

1 $\frac{5}{8}$ " x 2 $\frac{1}{4}$ ", Square corner, full lip, 1 $\frac{1}{8}$ " lip length, no box



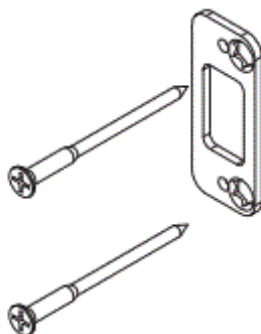
### 10-116

1 $\frac{1}{8}$ " x 2 $\frac{3}{4}$ " Round corner, no lip  
Includes  $\frac{3}{4}$ " combo screws (2)  
and 3" wood screws (2)



### 37-016\*

Strike reinforcement for use with  
10-094 or 10-116 strikes

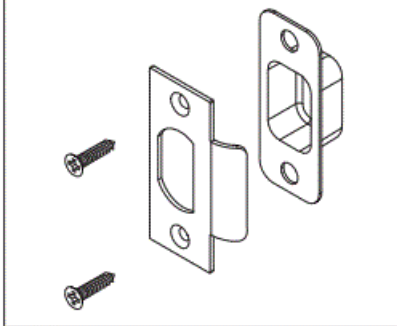


\* Not for use with strike box.

## Deadlatch strikes

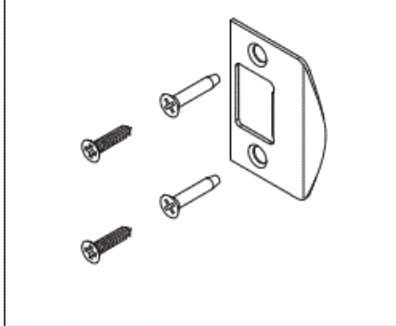
### 10-001

1/8" x 2 3/4" Square corner T-strike, box



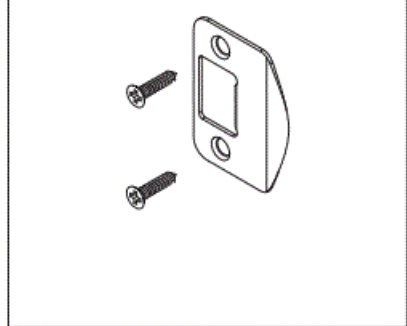
### 10-026, standard

1 5/8" x 2 1/4", square corner, full lip, no box



### 10-027

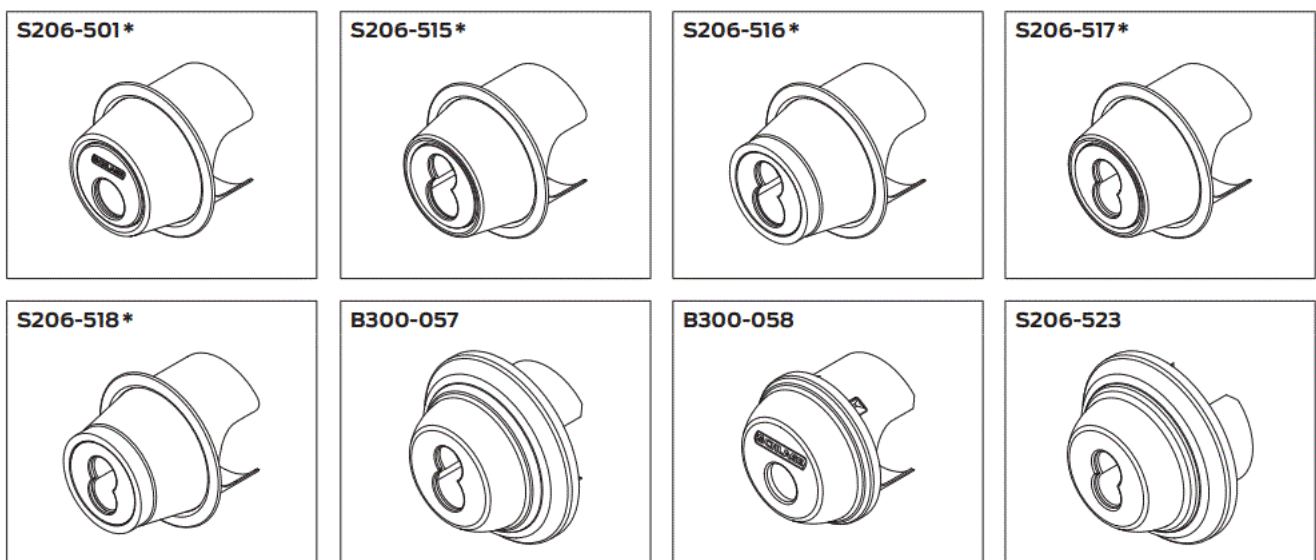
1/4" Radius round corner, full lip, 1 1/8" lip length, no box, 1 5/8" x 2 1/4"



## Parts

### Trim and lock components

| Part number | Function  | Description  |
|-------------|-----------|--|
| S206-501 *  | B500      | Deadbolt cylinder housing assembly                 |
| S206-515 *  | B500      | Deadbolt FSIC cylinder housing assembly            |
| S206-516 *  | B500      | Deadbolt FSIC cylinder housing assembly, thin door |
| S206-517 *  | B500      | Deadbolt SFIC cylinder housing assembly            |
| S206-518 *  | B500      | Deadbolt SFIC cylinder housing assembly, thin door |
| B300-058    | B60       | Deadbolt cylinder housing assembly                 |
| B300-057    | B60       | Deadbolt FSIC cylinder housing assembly            |
| S206-523    | B60       | Deadbolt SFIC cylinder housing assembly            |
| 22-093      | B500      | Deadbolt cylinder core                             |
| 23-030      | B60, B500 | Deadbolt FSIC cylinder core                        |
| 80-037      | B60, B500 | Deadbolt SFIC cylinder core                        |
| F506-864 *  | B60, B500 | Escutcheon   |
| F206-493 *  | B60, B500 | Escutcheon plate assembly, thumbturn               |
| 08-029 *    | B60, B500 | Rose (specify PLY or SAT design) (see note below)  |
| 06-242 *    | B60, B500 | Levers, qty 2 (see note below)                     |
| S206-502    | B60, B500 | Interconnect assembly                              |
| F206-494    | B60, B500 | Chassis assembly, inside                           |
| F206-496    | B60, B500 | Chassis assembly, outside                          |
| F506-867    | B60, B500 | Handing plate                                      |
| F506-878    | B60, B500 | Cylinder driver bar                                |
| S506-894    | B60, B500 | Cylinder driver bar, FSIC                          |
| S502-999    | B60, B500 | Cylinder driver bar, SFIC                          |



\* Specify finish.

\* Specify finish.

**Note:** The rose-lever combination must be examined when changing levers or roses. Crimp-on roses were transitioned to snap-on roses in August 2015. Snap-on roses can be identified by retention dimples at the base of the rose. If not compatible, an outside chassis with crimp-on rose may be updated with the following parts: 06-242, levers; 08-029 rose; A501-945 reinforcement ring; F206-496 outside chassis assembly.

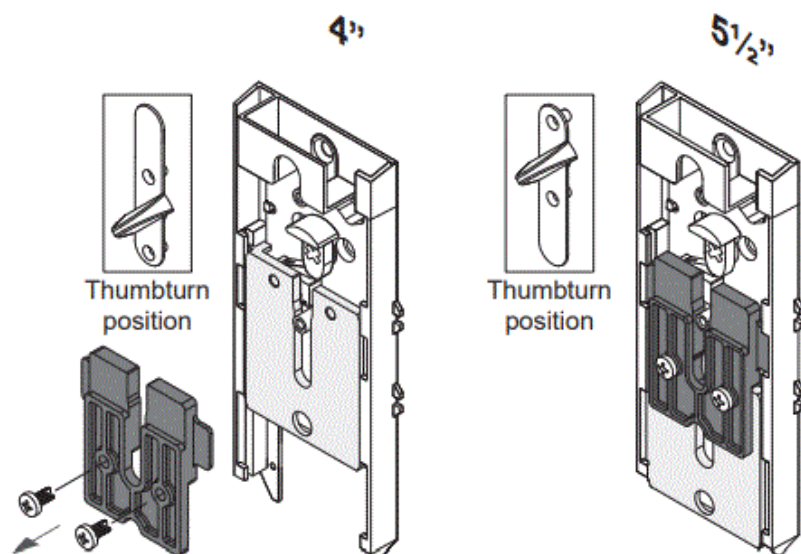
### Screws and screw packs

| Part number | Description   | Contents  |
|-------------|---|---|
| B202-578 *  | Latch and strike screws                                 | (4) C603-897, ¾" wood screw/machine screw   |
| S206-504 *  | Chassis and trim screws                                 | (2) each: B600-100, 115/16" mounting screw<br>B520-621, ¾" escutcheon machine screw F<br>506-278, 1½" machine screw |
| S206-505    | Chassis and trim screws, thick door                     | (2) each: B600-101, 227/64" mounting screw<br>B520-621, ¾" escutcheon machine screw F<br>506-278, 1½" machine screw |
| B502-873    | Strike reinforcement screws (order in multiples of 100) | #12 x 3" flat head Phillips wood screws   |

Specify finish.

### Center-to-center conversion

Conversion of the center-to-center dimension (thumb turn to the lever) is made by a modification to the interconnect assembly.



- For 4" center-to-center door preparation, remove two screws and the plate as shown. Position the thumb-turn assembly with the thumb turn toward the bottom of the thumb-turn escutcheon plate.

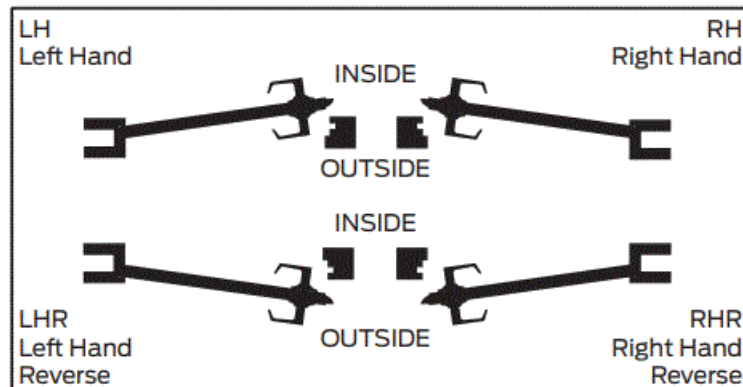
- For 5½" preparation, keep the plate in place with two screws. Position the thumbturn assembly with the thumb turn toward the top of the thumb-turn escutcheon plate.

## Handing

Lock handling is important to ensure that the correct side of the door is secure, the levers are oriented properly, and that the door closes properly.

There are 4 different door handings: LH (left hand), RH (right hand), LHR (left-hand reverse), and RHR (right-hand reverse).

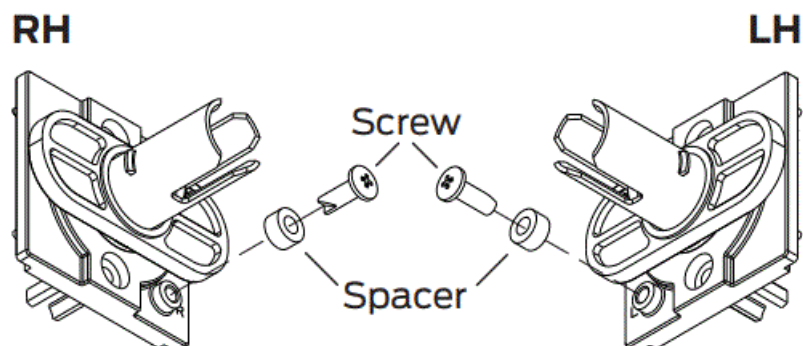
### To determine handing:



1. Stand on the secure side of the door. (The secure side is usually the outside.)
2. Note the location of the hinges.
3. If the hinges are on the left, it is a left-hand door, or if the hinges are on the right it is a right-hand door.
4. Note if the door swings away from you or toward you.
5. If the door swings away from you it is a standard swing door, or if the door swings toward you it is a reverse door.

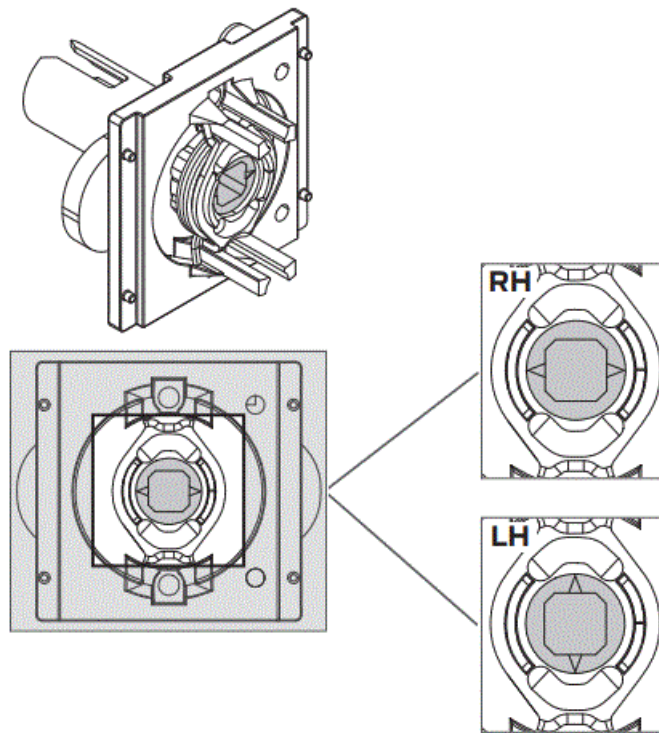
### To change handing:

1. Move the screw and spacer to the appropriate hole on the inside chassis assembly.  
Do not use power screwdriver.

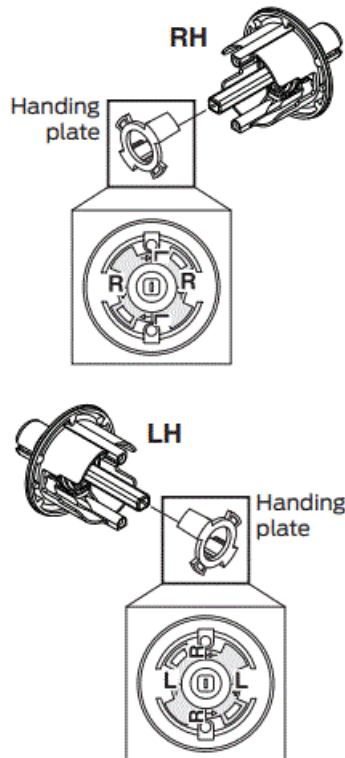


2. Rotate the internal cam of the inside chassis assembly. The arrows should be horizontal for right hand doors and vertical for left hand doors.





3. Position the handing plate for the door handing as shown.



## Finishes

Schlage CS210 Series lock products are available in a range of durable, top-quality finishes. The longevity and preservation of the finish appearance is determined by base metal and finishing process. Clear protective coating or other organic finishing applications may require different methods of cleaning and care. For example, non-clear coated finishes should not be cleaned with any soaps or solvents. Organically coated surfaces should periodically be cleaned with a mild non-abrasive soap and be buffed lightly with a clean cloth. The type of base metal and finished techniques must be considered when applying any cleaning or preservative method. Finishes are coded according to the Builders Hardware Manufacturers Association (BHMA). The nearest old U.S. equivalent code designations are shown in parentheses.




| Code |         | Description            |  | Code |           | Description            |
|------|---------|------------------------|--|------|-----------|------------------------|
| 605  | (US 3)  | Bright brass           |  | 625  | (US 26)   | Bright chromium plated |
| 609  | (US 5)  | Satin brass, blackened |  | 626  | (US 26D ) | Satin chromium plated  |
| 619  | (US 15) | Satin nickel           |  | 643e | (US 11)   | Aged bronze            |
| 622  | (US 19) | Matte black            |  |      |           |                        |

**About Allegion**

Allegion (NYSE: ALLE) creates peace of mind by pioneering safety and security. As a \$2 billion provider of security solutions for homes and businesses, Allegion employs more than 8,000 people and sells products in more than 120 countries across the world. Allegion comprises 27 global brands, including strategic brands CISA®, Interflex®, LCN®, Schlage® and Von Duprin®. For more, visit [www.allegion.com](http://www.allegion.com).

© 2023 Allegion 013954, Rev. 05/22 [www.allegion.com/us](http://www.allegion.com/us)

**Documents / Resources**

|   |  |
|---|--|
|  | <p><a href="#">SCHLAGE CS210 Series Interconnected Lockset</a> [pdf] User Manual<br/>CS210-B500, CS210-B60, CS210 Series Interconnected Lockset, Interconnected Lockset, Lockset</p> |
|---|--|

**References**

- [Allegion | Seamless Access and a Safer World](#)
- [Allegion US | Redefining Access Control & Commercial Security](#)
- [User Manual](#)