



scheppach SG3200x Power Generator Instruction Manual

[Home](#) » [Scheppach](#) » [scheppach SG3200x Power Generator Instruction Manual](#) 



SG3200x Power Generator Instruction Manual

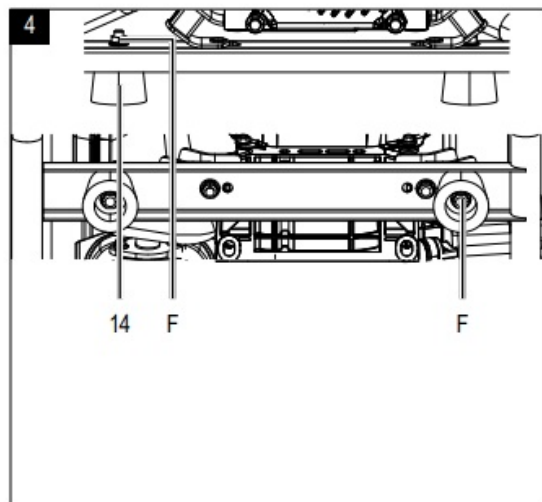
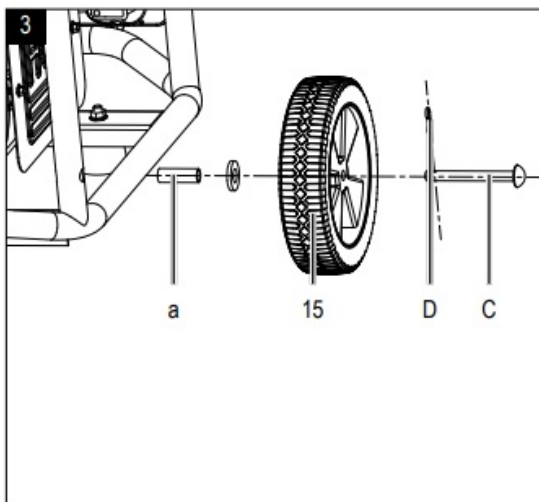
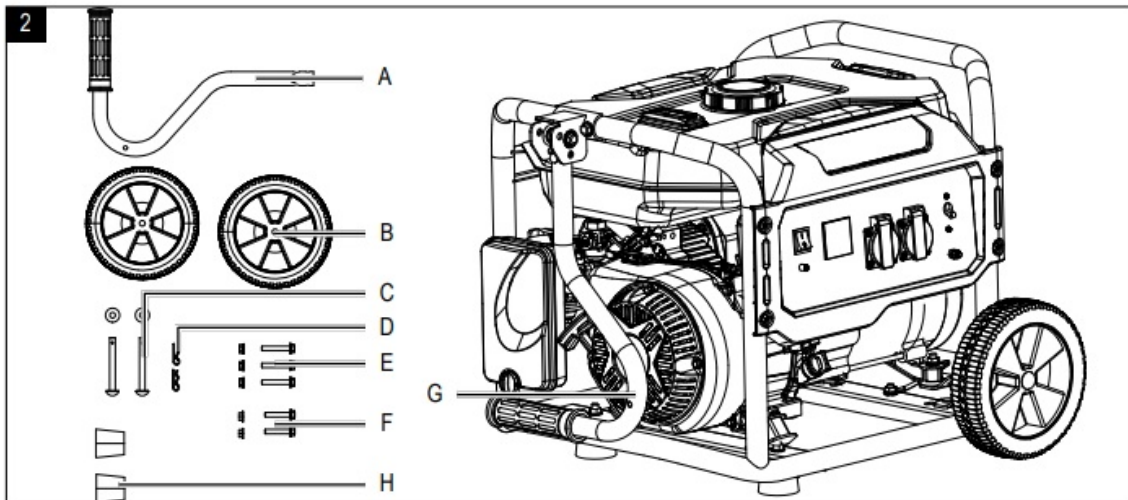
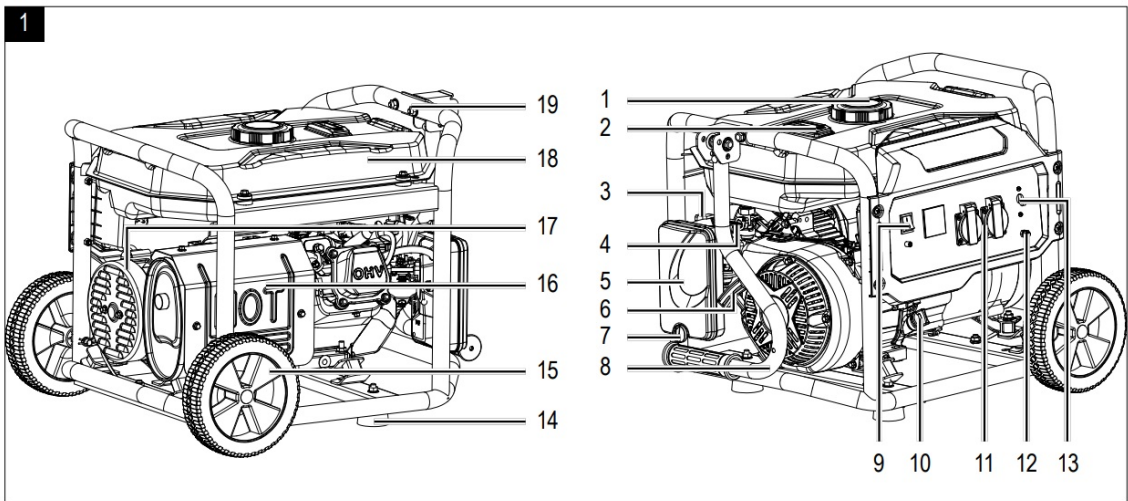
Contents

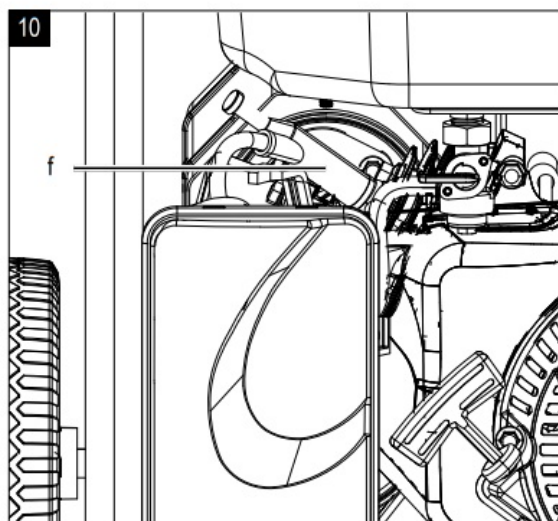
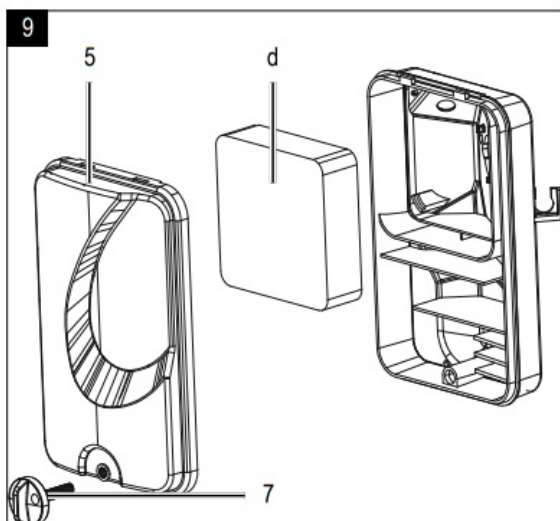
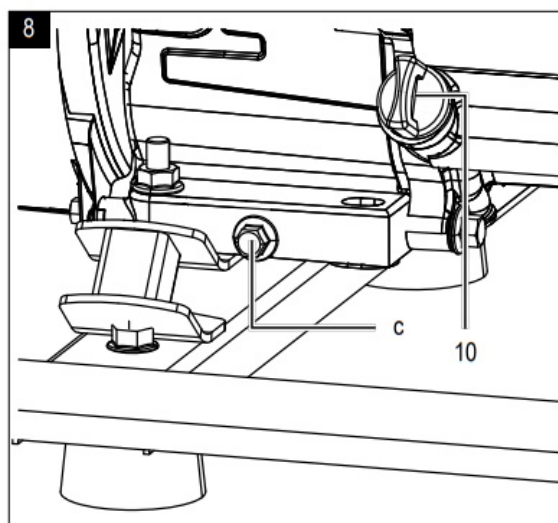
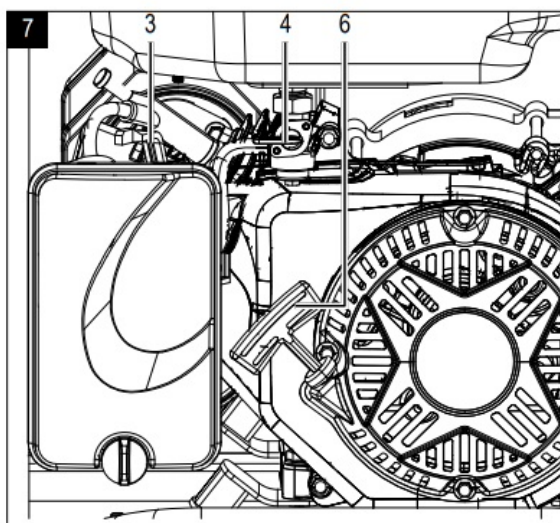
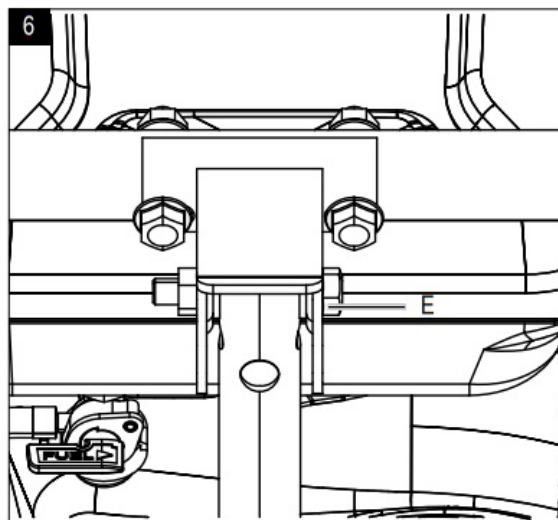
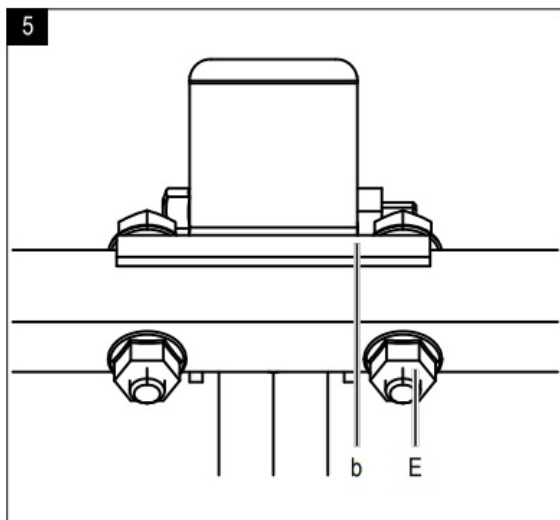
- [1 SG3200x Power Generator](#)
- [2 Introduction](#)
- [3 Safety information](#)
- [4 Technical data](#)
- [5 Maintenance](#)
- [6 Documents / Resources](#)
 - [6.1 References](#)
- [7 Related Posts](#)

SG3200x Power Generator






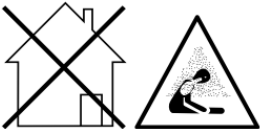


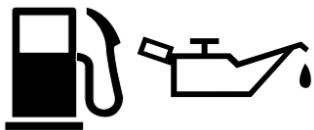
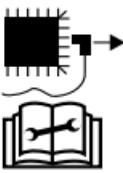




<https://www.scheppach.com/de/service>





Explanation of the symbols on the device

Symbols are used in this manual to draw your attention to potential hazards. The safety symbols and the accompanying explanations must be fully understood. The warnings themselves will not rectify a hazard and cannot replace proper accident prevention measures.

	Read the operating manual. Before using the device, always refer to the relevant section in the user manual.
	Important. Hot parts. Keep your distance.
	Important. Always switch off the engine before refuelling. Do not refill during operation.
	Important. The exhaust gases are toxic. Do not operate the engine in areas that are not ventilated.
	Wear hearing protection. Wear protective gloves.
	Warning against electrical voltage
	Be very careful when dealing with fuels and lubricants!
	Remove the ignition cable before carrying out maintenance work and read the instructions.
	Do not expose the device to rain.
	Sparks are produced when the engine is started. These can ignite nearby flammable gases.
	Naked flames or smoking near the device is strictly prohibited!
 Attention!	We have marked points in these operating instructions that impact your safety with this symbol

Introduction

Manufacturer:

Scheppach GmbH
Günzburger Straße 69
D-89335 Ichenhausen
Dear Customer

We hope your new tool brings you much enjoyment and success.

Note:

In accordance with the applicable product liability laws, the manufacturer of this device assumes no liability for damage to the device or caused by the device arising from:

- Improper handling,
- Failure to comply with the operating instructions
- Repairs carried out by third parties, unauthorised specialists.
- Installing and replacing non-original spare parts
- Application other than specified
- Failure of the electrical system in the event of the electrical regulations and VDE provisions 0100, DIN 13 / VDE0113 not being observed

Please consider:

Read through the complete text in the operating manual before installing and commissioning the device. The operating manual is intended to help the user to become familiar with the machine and take advantage of its application possibilities in accordance with the recommendations.

The operating manual includes important instructions for safe, proper and economic operation of the device, for avoiding danger, for minimising repair costs and downtimes, and for increasing the reliability and extending the service life of the device.

In addition to the safety instructions in this operating manual, you must also observe the regulations applicable to the operation of the device in your country. Keep the operating manual package with the machine at all times and store it in a plastic cover to protect it from dirt and moisture.

They must be read and carefully observed by all operating personnel before starting the work. The device may only be used by personnel who have been trained to use it and who have been instructed with respect to the associated hazards. The required minimum age must be observed.

In addition to the safety instructions in this operating manual and the separate regulations of your country, the generally recognised technical rules relating to the operation of such machines must also be observed. We accept no liability for accidents or damage that occur due to a failure to observe this manual and the safety instructions.

Device description (Fig. 1 – 2)

1. Tank cover	11. 230 V socket (2x)
2. Fuel gauge	12. Earthing screw
3. Choke	13. Disconnecter
4. Petrol shut-off valve	14. Support feet
5. Filter cover	15. Transport wheels
6. Reverse starter	16. Exhaust pipe
7. Grip screw	17. Motor
8. Transport handle	18. Tank
9. On/off switch	19. Frame
10. Oil filler cap with dipstick	

Scope of delivery

A. Transport handle	E. Hexagon screw M8x45mm + Nut M8
B. Transport wheels	F. Hexagon screw M8x40mm + Nut M8
C. Wheel axle (Ø10x97mm) + Washer (2x)	G. Generators
D. Spring split pin (2x)	H. Support feet (2x)

Proper use

The machine may only be used in the intended manner. Any use beyond this is improper.

The user/operator, not the manufacturer, is responsible for damages or injuries of any type resulting from this. n element of the intended use is also the observance of the safety instructions, as well as the assembly instructions and operating information in the operating manual.

Persons who operate and maintain the machine must be familiar with it and must be informed about potential dangers.

In addition, the applicable accident prevention regulations must be strictly observed. Other general occupational health and safety-related rules and regulations must be observed. The liability of the manufacturer and resulting damages are excluded in the event of modifications of the machine.

This power unit can power light bulbs, heaters, drills, water pumps, etc. Do not exceed the load limit specified for the power unit.

The power unit may not be used to power devices that have a high power requirement.

The power unit cannot be used for precision devices such as computers. These precision devices may be damaged under certain circumstances by distortions caused by the broad wave when the power unit's power is output. Do not connect the power unit to the electrical installation of a building.

- Only use the generator when in a technically faultless condition, appropriately and in compliance with the operating manual and with full knowledge of safety and hazards!
- In particular, rectify malfunctions that could impair safety immediately (or commission rectification works accordingly)!
- The safety, operating and maintenance specifications of the manufacturer, as well as the dimensions specified in the technical data, must be observed.
- Relevant accident prevention regulations and other generally recognized safety and technical rules must also be observed.
- The generator may only be used, maintained or repaired by persons who are familiar with it and have been informed of the dangers. The manufacturer shall not be liable for damage resulting from unauthorised changes to the machine.
- The generator may only be used for the work for which it is built and which described in the operating manual.
- The generator may only be operated with original accessories and original tools from the manufacturer.
- Any use beyond this is improper use. The manufacturer is not responsible for the resulting damages; the user solely bears the risk.

Please observe that our equipment was not designed with the intention of use for commercial or industrial purposes. We assume no guarantee if the equipment is used in commercial or industrial applications, or for equivalent work.

Safety information

This unit conforms to the prescribed safety regulations for electrical machines

- Read the usage instructions carefully before starting the generator.
- Improper use may lead to personal injury and damage to property. Persons who are unfamiliar with the instructions may not operate the unit. Store the user manual carefully.
- Children and young persons may not use this unit.
- The manufacturer does not take any responsibility for damage caused by improper use or changes to the machine.
- Also adhere to the safety information, the assembly and operating instructions, as well as the accident prevention regulations that are generally applicable.

Important note:

Ensure that persons who work with this unit have read and understood these operating instructions before operating the unit. Never use this unit inside buildings or in an environment that does not have ventilation. The exhaust gases contain carbon monoxide, which is an odourless, poisonous gas.

Attention!

The voltage of the generator fluctuates; this may cause damage to the following devices:

- Television sets, audio-video devices,
- products or devices with electronic control

Safety information

Read this manual carefully – familiarise yourself with this device. Observe the instructions for use, restrictions and possible dangers that apply to this device.

- Only set up the device on a firm surface.
- The load must not exceed the power specified on the type plate of the generator. Overloading causes damage to the device or shortens the service life.
- The engine may not be operated at an excessive speed. Operating the engine at an excessive speed increases the danger of injury. Parts that influence the standard speed must not be changed.
- Before making any adjustments to the generator or engine, be sure to remove the spark plug or ignition cable to prevent accidental starting.
- Devices with faulty or missing parts or without a protective housing or cover may not be operated. Information about spare parts can be obtained from your customer service.
- Do not operate or store the device in a wet or damp environment or on highly conductive surfaces such as metal coating or steel structures. When operating the device under conditions such as those mentioned above, always wear rubber gloves and boots as well as an earth circuit breaker.
- Keep the generator clean and free of oil, dirt and other foreign bodies.
- Ensure that extension cables, power cables and all electrical components are in perfect condition. Never operate electrical devices with damaged or defective cables.
- To prevent burns, do not touch the exhaust pipe and other engine and generator parts that heat up during operation.
- Do not connect the device to household sockets.
- Do not connect to other power sources.

Do not operate the generator under the following conditions:

- When changing the engine speed
- When decreasing the electrical power
- When misfiring occurs
- In the event of spark formation
- In the event of excessive vibration
- When flames or smoke occur
- In enclosed spaces
- When raining or in rough weather
- In enclosed room sections
- When raining or in rough weather
- In the event of overheating in connected devices
- In the event of damage to the sockets

Check the fuel system regularly for leaks and signs of wear such as rubbed or porous lines, loose or missing clamps and damage to the tank or tank cover. All faults must be remedied before operation.

The generator may only be operated, maintained and refilled under the following conditions:

- Sufficient ventilation. Avoid environments in which steam can accumulate, e.g. trenches, cellars, excavations and bilges. Observe air flow and temperature. An ambient temperature of 40°C should not be exceeded.
- In enclosed spaces, discharge hazardous exhaust gases via pipes. The engine exhaust gases contain carbon monoxide, a toxic, odourless and colourless gas that causes serious damage to health or death when inhaled.
- Only refuel the generator when there is sufficient illumination. Avoid spilling fuel. Never refuel the generator during operation. Allow the engine to cool for approx. two minutes before refuelling.
- Do not carry out fuelling in the vicinity of open flames, control lamps or spark forming electrical devices such as electrical tools, welding machines and grinding machines.
- Check the silencers and air filters for perfect condition. These parts are used as flame protection in the event of backfires.
- Do not smoke near the generators. Do not wear loose clothing, jewellery or similar objects which can get caught by the starter or other rotating parts. The generator has been built according to the state-of-the-art and the recognised technical safety rules. However, individual residual risks can arise during operation. Furthermore, despite all precautions having been met, some non-obvious residual risks may still remain.
- Residual risks can be minimised if the “Safety instructions” and the “Proper use” are observed along with the whole of the operating instructions.

Dangers and protective measures

Exhaust gases:

Inhaling of exhaust gases Only use the device outdoors

Electric shock:

Touching the spark plug. Do not touch the spark plug connector when engine is running

Burns:

Touching the exhaust pipe Leave the device to cool down

Fire – explosion:

Petrol is flammable Smoking is prohibited when refuelling and working



WARNING! This power tool generates an electromagnetic field during operation. This field can impair active or passive medical implants under certain conditions.

In order to prevent the risk of serious or deadly injuries, we recommend that persons with medical implants consult with their physician and the manufacturer of the medical implant prior to operating the power tool.

Technical data

Voltage control	AVR
Protection category	IP23M
Continuous output P (S1)	2500 W
max. Power P max. (S2 5 min)	2800 W
Rated battery voltage U,	2 – 230 V-
Rated current I	11A
Frequency F	50 Hz
Drive motor type	4-stroke 1 cylinder air-cooled
Displacement	212 cm ³
Motor speed	2000 min ⁻¹
Max. power (engine)	4.3 kW
Fuel	Unleaded petrol
Tank contents	15 l
Engine oil type (recommended)	10W30 / 15W40
Oil volume (approx.)	0.6 l
Consumption at 2/3 load	1.05 l/h
Weight	44.7 kg
Performance class	G1
Power factor cos ϕ	1
Quality class	A
Max. temperature.	40 °C
Max. altitude (above mean sea level)	1000 m
Starter	Pull cable starter
Spark plug	F7RTC/F6RTC

Technical changes reserved!

Operating mode S1 (continuous operation)

The machine may be operated continuously with the specified power.

Operating mode S2 (short-term operation)

The machine may only be operated at maximum power for a brief time. Then, the machine must be brought to a standstill for a period of time so that it is not allowed to heat up.

Noise



Warning: Noise can have serious effects on your health. If the machine noise exceeds 85 dB (A), please wear suitable hearing protection.

Noise data

Sound power level LWA	94.15 dB
Sound pressure level LpA	74.15 dB
Uncertainty Kwa/pA	1.5 dB

Unpacking

- Open the packaging and carefully remove the device.
- Remove the packaging material, as well as the packaging and transport safety devices (if present).
- Check whether the scope of delivery is complete.
- Check the device and accessory parts for transport damage.
- If possible, keep the packaging until the expiry of the warranty period.



DANGER

The device and the packaging are not children's toys! Do not let children play with plastic bags, films or small parts! There is a danger of choking or suffocating!

Assembly / Before commissioning



ATTENTION!

Always make sure the device is fully assembled before commissioning!

Your machine is not fully assembled.

Installing the transport wheel (fig. 3)

1. Insert the guide (a) into the designated hole
2. Feed the wheel axle (c) through the wheel (15).
3. Now push the washer onto the wheel axle (C) and slide the wheel axle (C) with the wheel (15) into the guide (a).
4. Secure the wheel axle each with a spring split pin (D).

Installing the support feet (fig. 4)

1. Fit the support feet (14) to the lower frame strut. Fasten the support feet with a bolt and nut (F) each.

Installing the transport handle (fig. 5 + 6)

1. Fix the handle holder (b) to the upper frame (19) with the screws and nuts (E).
2. Then align the transport handle (8) in the handle holder (b) and fix it with a bolt and nut (E). Attention! Do not overtighten the screw (E) for the handle (8), the handle (8) must be able to move freely.

Attention! Fill the oil before first use.

Before each use, check the oil level with the engine switched off and on a level surface. Use the highest quality four-stroke oil or an HD oil with the same level of quality.

Checking the oil level

Remove the oil filler cap with dipstick (10) and wipe the dipstick clean. Check the oil level by inserting the dipstick into the filling nozzle without screwing the cap on. If the oil level is too low, refill with the recommended oil up to the lower rim of the oil filling nozzle.

Oil warning system

The oil warning system is configured to avoid damage to the engine due to a lack of oil in the spherical housing.

Before the oil level in the spherical housing can drop below the safety level, the oil warning system automatically cuts the engine off. If the oil warning system cuts the engine off, refill the engine oil.

Refuelling

Warning! Petrol is highly inflammable and explosive. When handling fuels, you may suffer burns or other severe injuries. Use petrol with an octane rating of at least 92 octane. Only use fresh, clean fuel. Water or impurities in the petrol damage the fuel system. Tank volume:15 litres

- Only fill the tank up to the marking in the fuel strainer.
- Note that fuel expands.
- Refuel in a well-ventilated area with the engine stopped. If the engine was in operation immediately before, allow it to cool first.
- Never refuel the engine in a building where the petrol vapour may come into contact with flames or sparks.
- Do not smoke whilst refuelling or in the area in which the petrol is stored and prevent naked flames or sparks under these circumstances.
- After refuelling, ensure that the tank cover is closed correctly and securely again. Take care!
- Mop up spilled petrol immediately.
- If petrol is spilled, ensure that the area is dried before starting the engine.
- Avoid repeated or long contact of the fuel with the skin and avoid breathing in the fumes.
- Keep the fuel out of the reach of children.
- If there are occasional taps or knocks from the engine, you should use a different brand of petrol. If this does not solve the problem, contact an authorised dealer.

WARNING:Operating the engine with continuous ignition tapping or knocking can result in damage to the engine. Operating the engine with continuous ignition tapping or knocking is considered improper use. The manufacturer is not responsible for the resulting damages; the user solely bears the risk.

Start up

Earthing the generator

Earthing the housing is possible to discharge static charging. To do this, connect a cable on one side to the earth terminal (12) of the power generator and on the other side to an external mass rising pipe (e.g. rod earth).

WARNING:Do not use any pipes that carry inflammable substances as an earth source. Starting the engine (Fig. 1 + 7)

NOTE:Do not connect the electrical device before starting the engine.

1. Turn the fuel valve key (3) to "ON".

When the engine is cold:

Move the choke lever (3) to the CLOSED position by moving the lever to the left.

When the engine is warm:

Move the choke lever (6) to the OPEN position by moving the lever to the right.

2. Set the on/off switch (9) to the ON position
3. Pull the recoil starter (6) slowly until resistance is noticeable. Then pull hard.
4. Return the choke lever (3) to the OPEN position while the engine warms up.

WARNING:Ensure that you do not injure your fingers. If the motor does not start and a piston was not raised completely, the starter grip may suddenly spring back to the engine. Avoid the starter grip springing back against the engine. Feed it back slowly by hand to ensure that the cover is not damaged. Shutting the engine off

1. Switch the generator off

2. Set the engine switch to off
3. Turn the fuel valve to off

In an emergency, set the engine switch to off!

Electrical devices that can be connected

This power unit can power light bulbs, heaters, drills, water pumps, etc. Do not exceed the load limit specified for the power unit. The power unit may not be used to power devices that have a high power requirement. The power unit cannot be used for precision devices such as computers. These precision devices may be damaged under certain circumstances by distortions caused by the broad wave when the power unit's power is output. Do not connect the power unit to the electrical installation of a building.

WARNING: Connection to the electrical installation of a building may result in the electric current being returned to the mains supply wires. This return causes a risk of fatal electric shock for employees of the electricity supplier or other persons who touch the wires during a power failure.

Connection to the electrical installation of a building can also cause the electric current of the electricity supplier to return to the power unit. When the mains supply is restored, the power unit may explode, burn or cause a fire to break out in the electrical installation of the building.

Disconnecter (13)

The circuit breaker automatically disconnects the power unit in the event of a short circuit or significant overload of the generator at the socket. If the fuse has automatically popped out to the off position, check that the connected electrical appliance is in good working order and does not exceed the circuit's permissible load limit before pushing the fuse back in.

Cleaning

Attention!

Always shut the engine down and remove the spark plug connector before carrying out any cleaning work.

We recommend that you clean the device directly after every use.

Clean the device at regular intervals using a damp cloth and a little soft soap. Do not use any cleaning products or solvents; they could attack the plastic parts of the device. Make sure that no water can penetrate the device interior.

Transport

Transport

1. Allow the engine to cool before transporting.
2. Before transporting the power unit, switch the engine switch (9) to the OFF position and turn the fuel valve (4) to the OFF position
3. Keep the power unit level so that no petrol is spilled. Petrol vapour or spilled petrol may ignite.
4. Ensure that the power unit does not fall and do not subject it to any blows during transport.
5. For short transport, transport the generator using the transport wheels (15) and the transport handle (8).

Storage

Store the device and its accessories in a dark, dry and frost-free place that is inaccessible to children. The optimum storage temperature lies between 5 and 30 °C. Store the power tool in its original packaging. Cover the power tool to protect it from dust or moisture. Store the operating manual with the power tool.

When storing for a long period of time

1. Empty the fuel tank and run the carburettor empty.
2. Unscrew the spark plug.
3. Approx. Pour approximately 20 ml of clean engine oil through the spark plug hole into the cylinder.
4. Pull the starter rope out slowly so that the oil distributes itself in the engine and screw the spark plug back in.
5. Remove all dirt, deposits and dust from the engine and the cylinder head ridges.
6. Clean the air filter or replace it if it is very dirty.
7. Store the power generator securely in a dry place that is inaccessible to children.
8. The unit may not be stored in the open.

9. Cover the unit and the engine to protect against dust and store in a clean, dry place.

When re-commissioning after a long period of storage

1. Change the engine oil.
2. Fill with fresh petrol before starting the motor after the storage period.

If the engine is not used for more than one month, changes to the petrol quality may result in difficulties starting the engine or in other issues. To prevent this, loosen the carburettor's drain screw and allow the petrol to run out. Also open the fuel valve so that the petrol drains from the tank.

Maintenance

Attention!

Always shut the engine down and remove the spark plug connector before carrying out any maintenance work.

Changing the oil (fig. 8)

Change the engine oil after 25 operating hours, then after 50 hours or every three months. Drain the engine oil when the engine is hot.

1. Warm the engine up.
2. Switch the engine off.
3. Place a container that is large enough to collect the used oil under the oil drain screw (c).
4. To drain the oil, remove the screw-on oil cap (10) and the oil drain screw (c).
5. Drain the oil
6. Re-attach the oil drain screw (c) with a sealing washer and tighten.
7. Pour the recommended engine oil into the oil filler hole.

Note! Tightly screw the oil filler cap with dipstick (10). Capacity: approximately 0.6 litres. Dispose of the drained oil properly at a local used oil collection point. Dumping used oil in the soil or mixing it with waste is prohibited.

Check the spark plug (fig. 10)

Switch off the engine and allow it to cool. Caution Danger of burning. Clean or replace spark plug as required:

1. Remove the spark plug connector (f) and clean any dirt from the spark plug area.
2. Unscrew the spark plug and check it.
3. If there is any damage, e.g. cracks or chips, replace the spark plug.
4. Clean the spark plug electrodes with a wire brush.
5. Check and set the electrode gap.
6. Screw the spark plug in and tighten with the spark plug spanner.
7. Place the spark plug connector (f) on the spark plug.

When replacing, ensure that no dirt gets into the cylinder head.

Check the fit of the spark plug.

A loose spark plug can cause damage to the engine by overheating. Pulling too hard can damage the thread in the cylinder head.

The manufacturer is not responsible for the resulting damages; the user solely bears the risk. Only use the recommended spark plugs or identical spark plugs.

Clean the air filter (fig. 1 + 9)

1. Loosen the knurled screw (7)
2. Remove the air filter cover (5).
3. Clean the foam pre-filter (e) a non-flammable solvent.

Attention: Do not use petrol or cleaning solvents with a low flash point to clean the air filter element. This could result in fire or explosion.

4. Squeeze the pre-filter in order to remove the solvent/soapy water.
5. Rinse the washed filter element with clean water.
6. Allow the filter element to dry thoroughly or blow it out.
7. Attach the filter cover again and tighten the knurled screw.

If the engine is operated in very dusty environments, clean the air filter daily or after every ten operating hours. Never run the engine without an air filter or with a damaged air filter. This would allow dirt into the engine, which would result in severe damage to the engine. The manufacturer is not responsible for the resulting damages; the user solely bears the risk.

Important note in the case of repairs:

When returning the device for repair, please ensure for safety reasons that it is free of oil and fuel when it is sent to the service centre.

Service information

With this product, it is necessary to note that the following parts are subject to natural or usage-related wear, or that the following parts are required as consumables.

Wearing parts*: Spark plug, filter

* may not be included in the scope of supply!

Disposal and recycling



Information on packaging The packaging materials are recyclable. Please dispose of packaging in an environmentally friendly manner.

Notes on the electrical and electronic equipment act [ElektroG]

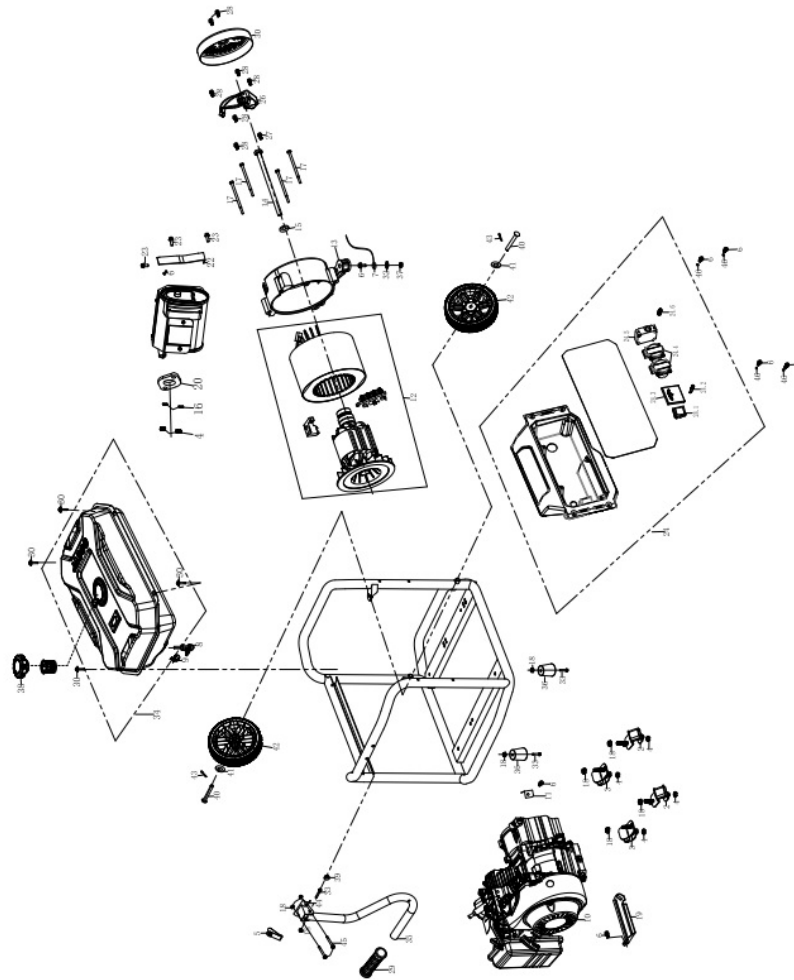


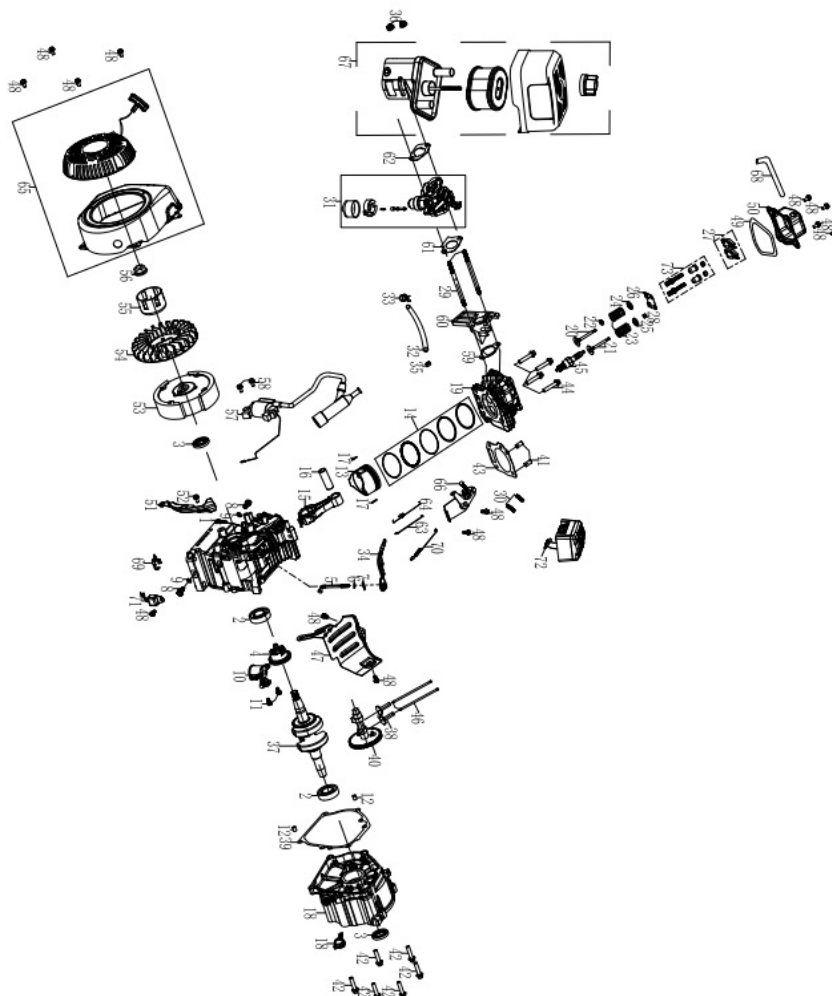
Waste electrical and electronic equipment does not belong in household waste, but must be collected and disposed of separately!

- Used batteries or rechargeable batteries that are not installed permanently in the old appliance must be removed non-destructively before disposal. Their disposal is regulated by the battery law.
- Owners or users of electrical and electronic devices are legally obliged to return them after use.
- The end user is responsible for deleting their personal data from the old device being disposed of!
- The symbol of the crossed-out dustbin means that waste electrical and electronic equipment must not be disposed of with household waste.
- Waste electrical and electronic equipment can be handed in free of charge at the following places: – Public disposal or collection points (e.g. municipal works yards)
 - Points of sale of electrical appliances (stationary and online), provided that dealers are obliged to take them back or offer to do so voluntarily.
 - Up to three waste electrical devices per type of device, with an edge length of no more than 25 centimetres, can be returned free of charge to the manufacturer without prior purchase of a new device from the manufacturer or taken to another authorised collection point in your vicinity.
 - Further supplementary take-back conditions of the manufacturers and distributors can be obtained from the respective customer service.
- If the manufacturer delivers a new electrical appliance to a private household, the manufacturer can arrange for

the free collection of the old electrical appliance upon request from the end user. Please contact the manufacturer's customer service for this.

- These statements only apply to devices installed and sold in the countries of the European Union and which are subject to the European Directive 2012/19/EU. In countries outside the European Union, different regulations may apply to the disposal of waste electrical and electronic equipment. Fuels and oils
- Before disposing of the unit, the fuel tank and the engine oil tank must be emptied! • Fuel and engine oil do not belong in household waste or drains, but must be collected or disposed of separately!
- Empty oil and fuel tanks must be disposed of in an environmentally friendly manner.





Declaration of Conformity

Scheppach GmbH, Günzburger Str. 69, D-89335 Ichenhausen

hereby declares the following conformity under the EU Directive and standards for the following article

Article name:

POWER GENERATOR – SG3200X

2014/29/EU	2004/22/EG	89/686/EWG_96/58/EG
2014/35/EU	2014/68/EU	90/396/EWG
2014/30/EU	2011/65/EU*	
2006/42/EG		

Notified Body No.:

Annex VI

Noise: measured LWA = 96 dB(A) P = xx KW; L/Ø = cm

Notified Body No.:0197

2010/26/EU Emission. No: e13*2016/1628*2017/656SRA1/P*0065*00


Standard reference

EN ISO 8528-13:2016; EN 55012:2007+A1; EN 61000-6-1:2007; EN ISO 3744:1995

This declaration of conformity is issued under the sole responsibility of the manufacturer.

The object of the declaration described above fulfils the regulations of the directive 2011/65/EU of the European Parliament and Council from 8th June 2011, on the restriction of the use of certain hazardous substances in electrical and electronic equipment.

Ichenhausen, den 13.09.2022


Unterschrift / Andreas Pecher / Head of Project Management

First CE: 2019

Subject to change without notice

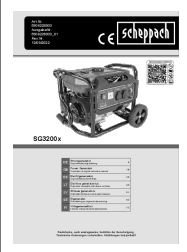
Warranty

Apparent defects must be notified within 8 days from the receipt of the goods. Otherwise, the buyer's rights of claim due to such defects are invalidated. We guarantee for our machines in case of proper treatment for the time of the statutory warranty period from delivery in such a way that we replace any machine part free of charge which provably becomes unusable due to faulty material or defects of fabrication within such period of time. With respect to parts not manufactured by us we only warrant insofar as we are entitled to warranty claims against the upstream suppliers. The costs for the installation of the new parts shall be borne by the buyer. The cancellation of sale or the reduction of purchase price as well as any other claims for damages shall be excluded.



www.scheppach.com

Documents / Resources

 A small image showing the Scheppach SG3200x power generator, which is a portable unit on wheels with various outlets and a control panel.	<p>scheppach SG3200x Power Generator [pdf] Instruction Manual 5906226903, 5906226903_01, SG3200x Power Generator, SG3200x, SG3200x Generator, Power Generator, Generator</p>
---	--

References

- [🔗 scheppach | scheppach](#)
- [🔗 Kontakt & Service | scheppach | scheppach](#)