



scheppach SG3200 Power Generator Installation Guide

[Home](#) » [Scheppach](#) » [scheppach SG3200 Power Generator Installation Guide](#) 

Contents

- [1 scheppach SG3200 Power Generator](#)
- [2 Introduction](#)
- [3 Device description](#)
- [4 Scope of delivery](#)
- [5 Intended use](#)
- [6 Safety information](#)
 - [6.1 Dangers and protective measures](#)
- [7 Technical data](#)
 - [7.1 Noise](#)
- [8 Unpacking](#)
- [9 Attachment / Before starting the equipment](#)
- [10 INSTALLATION INSTRUCTIONS](#)
- [11 Initial operation](#)
- [12 Cleaning](#)
- [13 Transport](#)
- [14 Storage](#)
- [15 Maintenance](#)
- [16 Disposal and recycling](#)
- [17 Troubleshooting](#)
- [18 EXPLODED DIAGRAMS](#)
- [19 EC Declaration of Conformity](#)
- [20 Warranty](#)
- [21 Documents / Resources](#)
 - [21.1 References](#)
- [22 Related Posts](#)









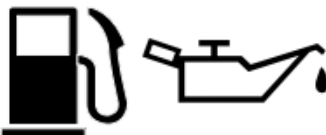


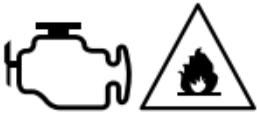

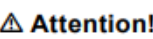


<https://www.scheppach.com/de/service>



Explanation of the symbols on the equipment

The use of symbols in this manual is intended to draw your attention to possible risks. The safety symbols and the explanations that accompany them must be perfectly understood. The warnings in themselves do not remove the risks and cannot replace correct actions for preventing accidents.

	Read operator manual. Before any use, refer to the corresponding section in this user manual.
	Important. Hot parts. Keep your distance.
	Important. Switch off the engine before refueling. Not refuel when operating.
	Important. Exhaust gas is poisonous, do not operate in an unventilated area.
	Wear hearing protection. Wear protective gloves.
	Beware of electrical voltage!
	Take care when handling fuel and lubricants!
	Remove the ignition cable before all maintenance work, and read the instructions for use.
	Don't expose to rain.
	Starting engine creates sparking. Sparking can ignite nearby flammable gases.
	Strictly no naked flames or smoking near the appliance!
 Attention!	In this operating manual, we have used this sign to mark all sections that concern your safety.

Introduction

Manufacturer:

Scheppach GmbH Günzburger Straße 69 D-89335 Ichenhausen Dear customer, We hope you have a lot of fun and success using your new machine.

Note:

According to the applicable product liability laws, the manufacturer of the device does not assume liability for damages to the product or damages caused by the product that occurs due to:

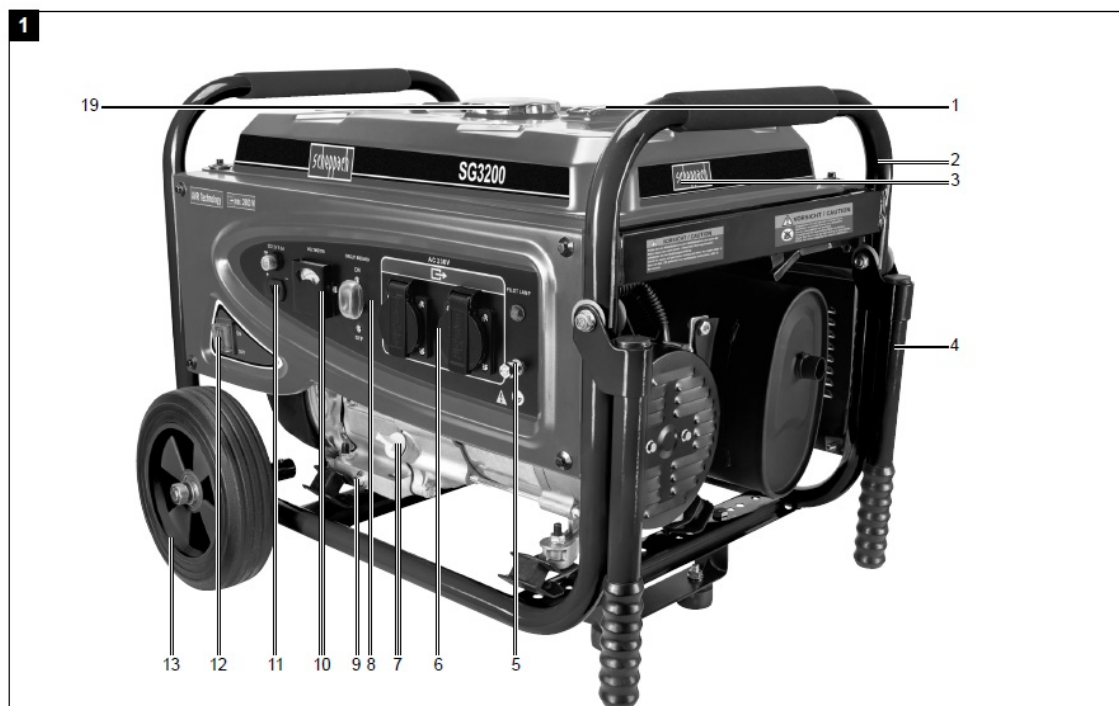
- improper handling,

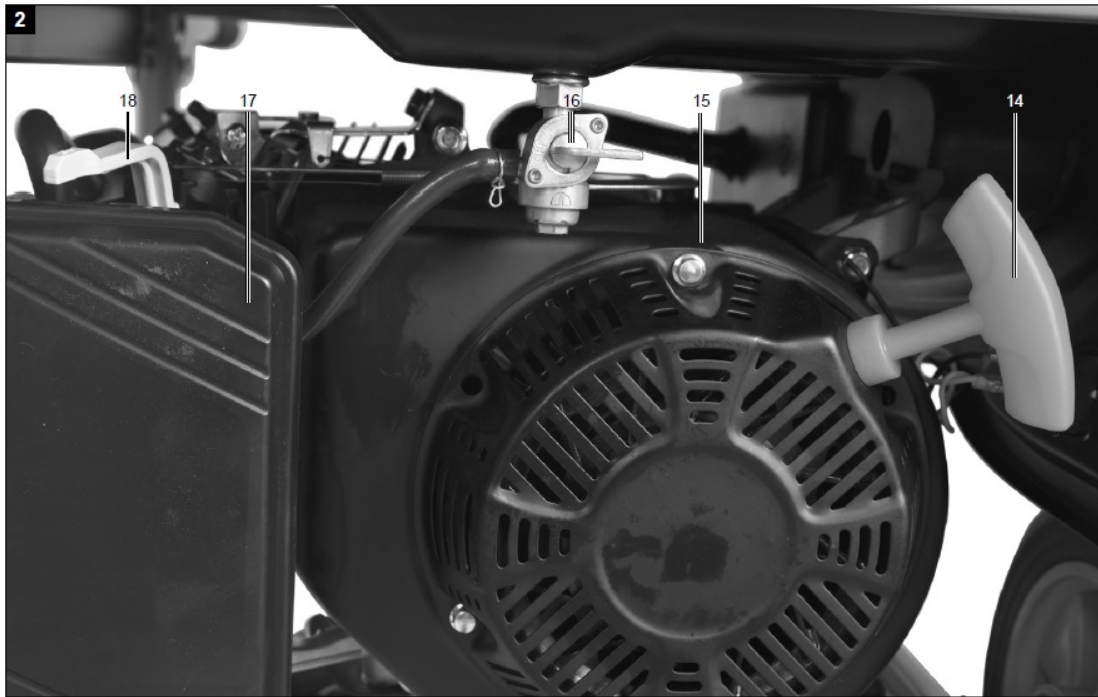
- noncompliance of the operating instructions,
- repairs by third parties, not by authorized service technicians,
- installation and replacement of non-original spare parts,
- non-intended use,
- Failure of the electrical system in the event of the electrical regulations and VDE provisions 0100, DIN 571 13 / VDE 01 13 not being observed.

We recommend:

That you read through the entire operating instructions before putting the machine into operation. These operating instructions are to assist you in getting to know your machine and utilize its proper applications. The operating instructions contain important notes on how you work with the machine safely, expertly, and economically, and how you can avoid hazards, save repair costs, reduce downtime and increase the reliability and service life of the machine. In addition to the safety requirements contained in these operating instructions, you must be careful to observe your country's applicable regulations. The operating instructions must always be near the machine. Put them in a plastic folder to protect them from dirt and humidity. They must be read by every operator before beginning work and observed conscientiously. Only persons who have been trained in the use of the machine and have been informed of the various dangers may work with the machine. The required minimum age must be observed. In addition to the safety requirements in these operating instructions and your country's applicable regulations, you should observe the generally recognized technical rules concerning the operation of identically constructed devices. We accept no liability for accidents or damage that occur due to a failure to observe this manual and the safety instructions.

Device description





1. Tank full indicator
2. Frame
3. Tank
4. Transport handle
5. Earthing screw
6. Socket – 230V (2x)
7. Oil filler tube
8. Circuit breaker
9. Oil drain plug
10. Voltmeter
11. Connection – 12V
12. On / Off Switch
13. Transport wheels
14. Reversing starter
15. Motor
16. Fuel tap
17. Air filter
18. Choke
19. Tank cap

Scope of delivery

- A. Transport wheels
- B. Support foot
- C. Adapter – 230V (2x)
- D. Operating manual
- E. Spark plug wrench
- F. Hexagonal bolt (M8 x 20)

- **G.** Hexagonal bolt (M8 x 40)
- **H.** Wheel axle
- **I.** Transport handles
- **J.** Hexagonal nut (M12)
- **K.** Hexagonal nut, self-locking (M8)
- **L.** Locking nut (M6)
- **M.** Washer, plastic (4x)
- **N.** Washer (2x)
- **O.** Spring washer (2x)
- **P.** Hexagonal open-end spanner 10/12 mm (2x)
- **Q.** 12V cable

Intended use

The machine may only be used in the intended manner. Any use beyond this is improper. The user/operator, not the manufacturer, is responsible for damages or injuries of any type resulting from this. An element of the intended use is also the observance of the safety instructions, as well as the assembly instructions and operating information in the operating manual. Persons who operate and maintain the machine must be familiar with the manual and must be informed about potential dangers. In addition, the applicable accident prevention regulations must be strictly observed. Other general occupational health and safety-related rules and regulations must be observed. The manufacturer does not take any responsibility for damage caused by improper use or changes to the machine. This power unit can power light bulbs, heaters, drills, water pumps, etc. Do not exceed the load limit specified for the power unit. The power unit may not be used to power devices that have a high power requirement. The power unit cannot be used for precision devices such as computers. These precision devices may be damaged by distortions caused by the broad wave when the power unit's power is output. Do not connect the power unit to the electrical installation of a building.

- Use the generator in a technically flawless condition only, as well as for its intended purpose, in a safe manner and being aware of dangers, in compliance with the operating instructions!
- Disruptions which can affect safety in particular must be eliminated straight away!
- The manufacturer's stipulations concerning safety, work and maintenance as well as the measurements specified in Technical Data, must be complied with.
- The relevant accident prevention stipulations and other widely recognised safety rules must be observed.
- The generator may only be used, maintained or repaired by personnel familiar with it and its dangers. Unauthorised changes to the machine negate the manufacturer's liability for damages resulting from this.
- The generator may only be used for work for which it has been built and which is described in the operating manual.
- The generator may only be used with the manufacturer's original accessories and original tools.
- Every use beyond that is deemed as not intended. The manufacturer is not liable for damage resulting from this; the risk lies exclusively with the user.

Please observe that our equipment was not designed with the intention of use for commercial or industrial purposes. We assume no guarantee if the product is used in commercial or industrial applications, or for equivalent work.

Safety information

This unit conforms to the prescribed safety regulations for electrical machines

- Read the usage instructions carefully before starting the generator.
- Improper use may lead to personal injury and damage to property. Persons who are unfamiliar with the instructions may not operate the unit. Store the usage instructions carefully.
- Children and young persons may not use this unit.
- The manufacturer does not take any responsibility for damage caused by improper use or changes to the machine.
- Also adhere to the safety information, the assembly and operating instructions, as well as the accident prevention regulations that are generally applicable.

Important note

Ensure that persons who work with this unit have read and understood these operating instructions before operating the unit. Never use this unit inside buildings or in an environment that does not have ventilation. The exhaust gases contain carbon monoxide, which is an odourless, poisonous gas.

Attention!

The voltage of the generator fluctuates; this may cause damage to the following devices:

- Television sets, audio-video devices,
- products or devices with electronic control

Safety instructions

Carefully read this manual, familiarise yourself with this machine. Observe the instructions for use for this machine, its limitations and possible hazards.

- Set up the machine on solid ground.
- The load must not exceed the specifications on the rating plate of the generator. An overload will cause damage to the machine or a shorter service life.
- Do not run the motor with excessive speed. Running the motor with excessive speed increases the risk of injury. Do not change any components that have an impact on the regular speed.
- Before carrying out adjustments on the generator or motor, remove the spark plug or the ignition cable, respectively, to prevent accidental start-up.
- Do not operate machines with faulty or missing components or without protective housing or covers. You can obtain information about spare parts from your customer service.
- Do not use or store the machine in a wet or damp environment or on highly conductive surfaces such as metal coatings or steel constructions. When using the machine under the aforementioned conditions, you must wear rubber gloves and boots and use a ground circuit breaker.
- Keep the generator clean and free from oil, dirt and other foreign particles.
- Ensure that extension cables, power cables and all electrical components are in a flawless condition. Never operate electrical devices with damaged or faulty cables.
- To prevent burning, do not touch the exhaust and other motor and generator parts that heat up during operation.
- Do not connect the machine to domestic power outlets.
- Do not connect it to other electricity sources.

Do not use the generator under the following conditions:

- when changing the motor speed
- when the electrical power decreases
- when a misfire occurs
- when sparks form
- during excessive vibration
- when flames or smoke appear
- in closed rooms
- during rain or rough weather
- in closed room sections
- when connected devices overheat
- in the event of damage to the sockets

Regularly check the fuel system for leakages and traces of wear and tear such as abraded or porous lines, loose or missing brackets and damage to the tank or tank lid. All faults must be resolved before use. The generator should be used, maintained and refuelled only under the following conditions:

- **Sufficient ventilation.** Avoid environments in which fumes can accumulate, such as ditches, basements, excavations and bilges. Observe the air flow and temperature. The ambient temperature should not exceed 40°C.
- In closed rooms, disperse hazardous fumes via pipes. The motor fumes contain carbon monoxide, a toxic, odourless and colourless gas, which causes severe health damage and possibly death, when inhaled.
- Refuel the generator only when there is sufficient lighting. Avoid spilling fuel. Never refuel the generator during operation. Leave the motor to cool down for about two minutes before refuelling.
- Do not carry out refuelling close to open fires, indicator lights or sparking electrical devices such as power tools, welding machines or grinding machines.
- Check sound absorbers and air filters for flawless condition. These parts act as flame protection in the event of misfire.
- Do not smoke close to the generator. Do not wear loose clothing, jewellery or similar objects that may get caught by the starter motor or other rotary parts.

The generator has been built according to the state-of-the-art and the recognised technical safety rules. However, individual residual risks can arise during operation. Furthermore, despite all precautions having been met, some non-obvious residual risks may still remain. Residual risks can be minimised if the “safety instructions” and the “Proper use” are observed along with the whole of the operating instructions.

Dangers and protective measures

Exhaust gases:

Inhalation of exhaust gases Only use the unit outdoors

Electric shock:

Touching the spark plug – Do not touch the spark plug connectors when the engine is running

Burns:

Touching the exhaust – Allow the unit to cool

Fire – explosion:

Petrol is inflammable – Smoking is prohibited when refuelling and working

WARNING! This electric tool generates an electro-magnetic field during operation. This field can impair active or passive medical implants under certain conditions. In order to prevent the risk of serious or deadly injuries, we recommend that persons with medical implants consult with their physician and the manufacturer of the medical implant prior to operating the electric tool.

Technical data

IP class	IP23M
Continuous power P_{nenn} (S1)	2500 W
Maximum power P_{max} (S2 5 min)	2800 W
Rated voltage U_{nenn}	2 x 230 V~ 12 V / 8,3A
Rated current I_{nenn}	16 A
Frequency f_{nenn}	50 Hz
Drive engine design	4 stroke 1 cylinder air cooled
Displacement	196 cm ³
Maximum power (motor)	4,8 kW / 6,5 HP
Fuel	unleaded fuel
Tank capacity	15 l
Type of motor oil	10W30 / 15W40
Amount of oil (approx.)	0,6 l
Consumption at 2/3 load	1,39 l/h

Weight	43 kg
Performance class	G2
Temperature max	40 °C
Max. altitude	1000 m
Starter motor	reversing starter
Spark plug	F6RTC

Operating mode S1 (continuous operation)

The machine can be continuously operated with the quoted power output.

Operating mode S2 (temporary operation)

The machine may be temporarily operated with the quoted power output. Afterwards the machine must be stopped for a while to prevent it from overheating.

Noise

WARNING: Noise can have serious effects on your health. If the machine noise exceeds 85 dB (A), please wear suitable hearing protection.

Noise data

- Sound pressure LpA 95,11 dB(A)
- Sound power LwA 75,09 dB(A)
- Uncertainty KpA 1,33 dB

Unpacking

- Open the packaging and remove the device carefully.
- Remove the packaging material as well as the packaging and transport bracing (if available).
- Check that the delivery is complete.
- Check the device and accessory parts for transport damage.
- If possible, store the packaging until the warranty period has expired.

DANGER

The device and packaging materials are not toys! Children must not be allowed to play with plastic bags, film and small parts! There is a risk of swallowing and suffocation!

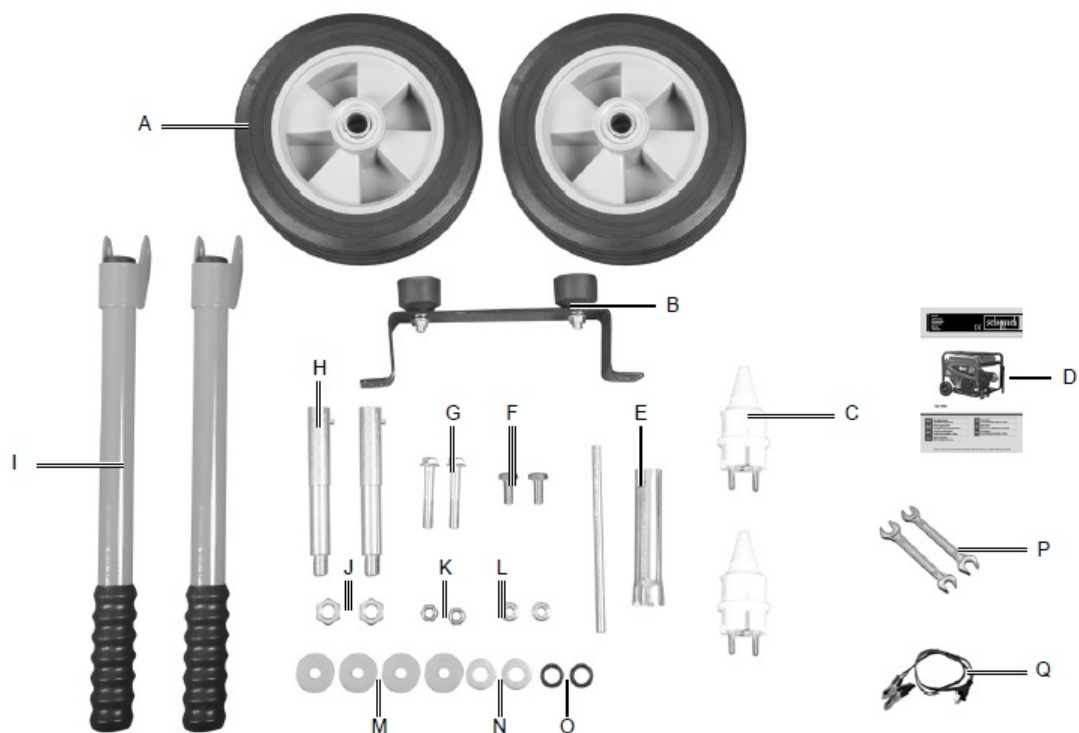
Attachment / Before starting the equipment

IMPORTANT!

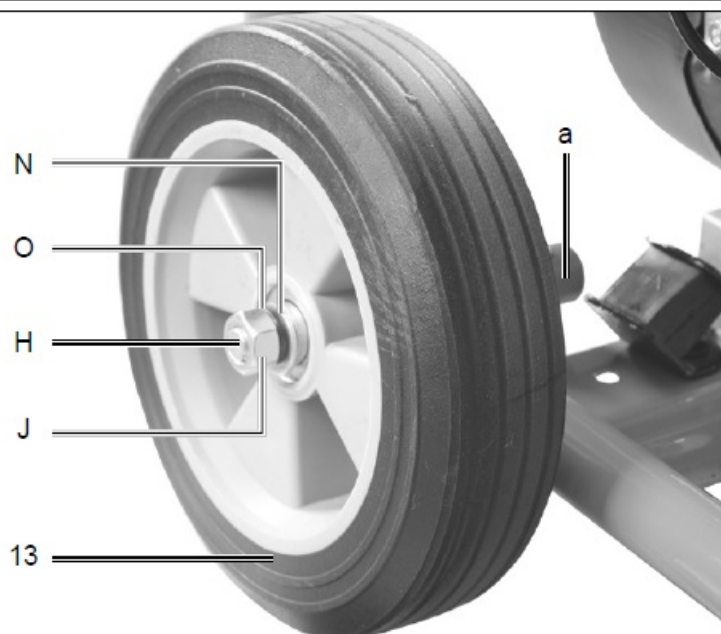
You must fully assemble the appliance before using it for the first time! Your machine is not fully assembled

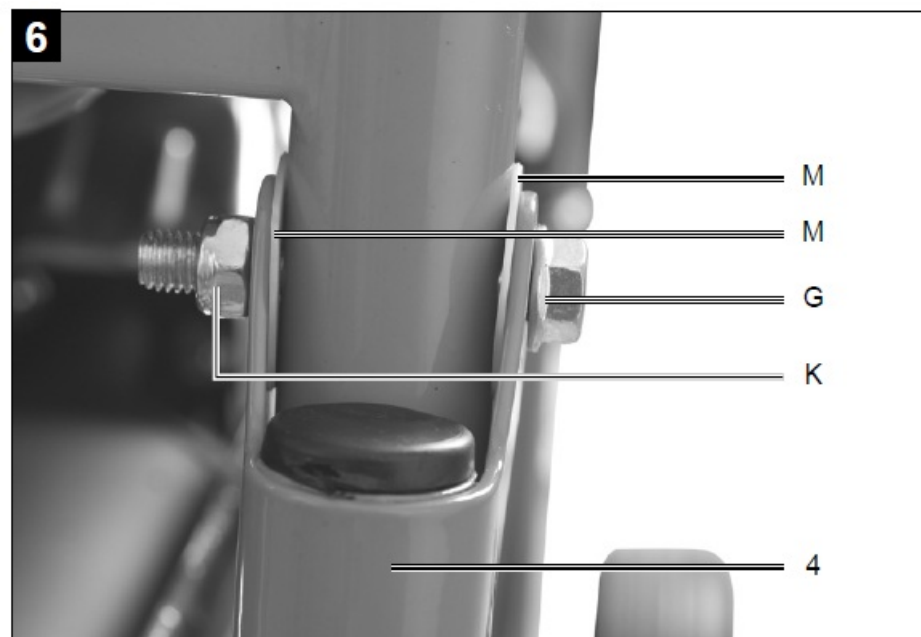
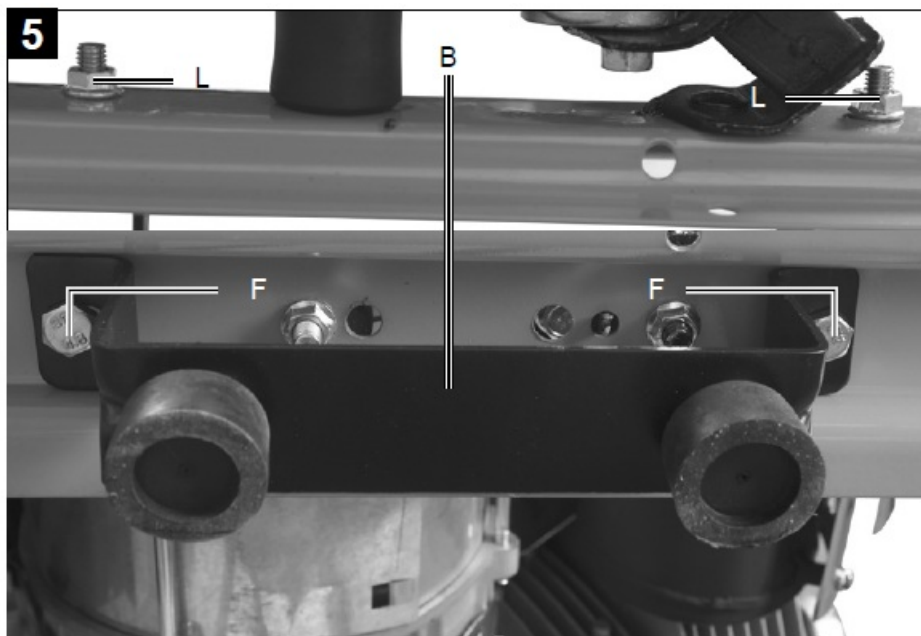
Assembling the transport device

3



4





1. Guide the wheel axle (H) through the guide (a) until it latches.
2. Guide the wheel (13) onto the wheel axle (H) and fasten to the wheel axle with a washer (N) and spring washer (O) and one hexagonal nut (J) respectively.
3. Mount the support foot (B) on the frame strut at the bottom. Fasten the support foot with two screws (F) and nuts (L)
4. Mount the transport handles (4) on the frame. Fasten the transport handles with the screw (G) and nut (K); two plastic washers (M) respectively are placed between the frame and fork of the transport handle.

Attention! Fill the oil before first use.

Before each use, check the oil level with the engine switched off and on a level surface. Use the highest quality four-stroke oil or an HD oil with the same level of quality

Checking the oil level



Remove the oil filler cap (7) and wipe the dipstick clean. Check the oil level by inserting the dipstick into the filling nozzle without screwing the cap on. If the oil level is too low, refill with the recommended oil up to the lower rim of the oil filling nozzle.

Oil warning system

The oil warning system is configured to avoid damage to the engine due to a lack of oil in the spherical housing. Before the oil level in the spherical housing can drop below the safety level, the oil warning system automatically cuts the engine off. If the oil warning system cuts the engine off, refill the engine oil.

Refuelling

Warning! Petrol is highly inflammable and explosive. When handling fuels, you may suffer burns or other severe injuries. Use petrol with an octane rating of at least 90 octane. Only use fresh, clean fuel. Water or impurities in the petrol damage the fuel system.

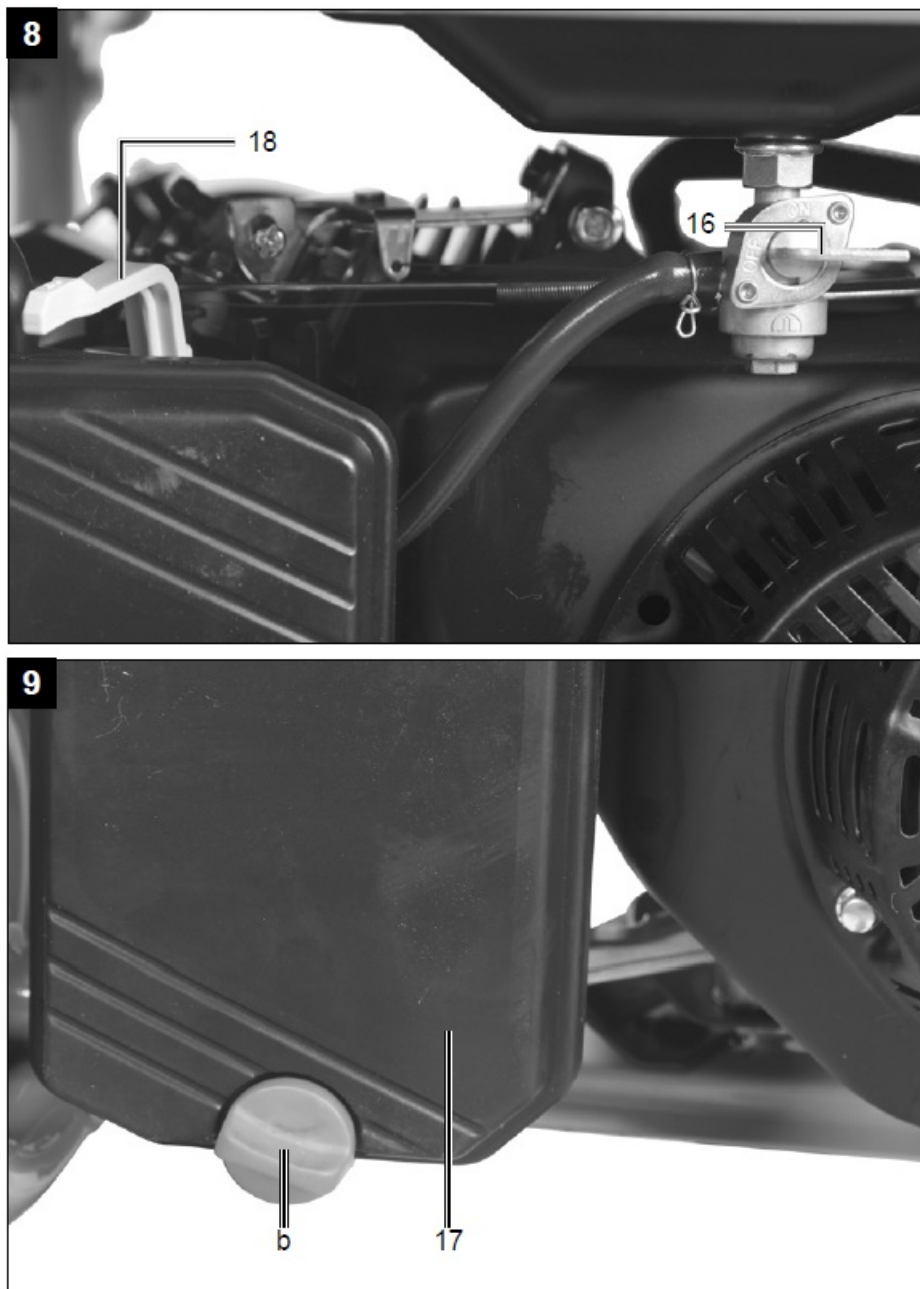
Tank volume: 15 litres

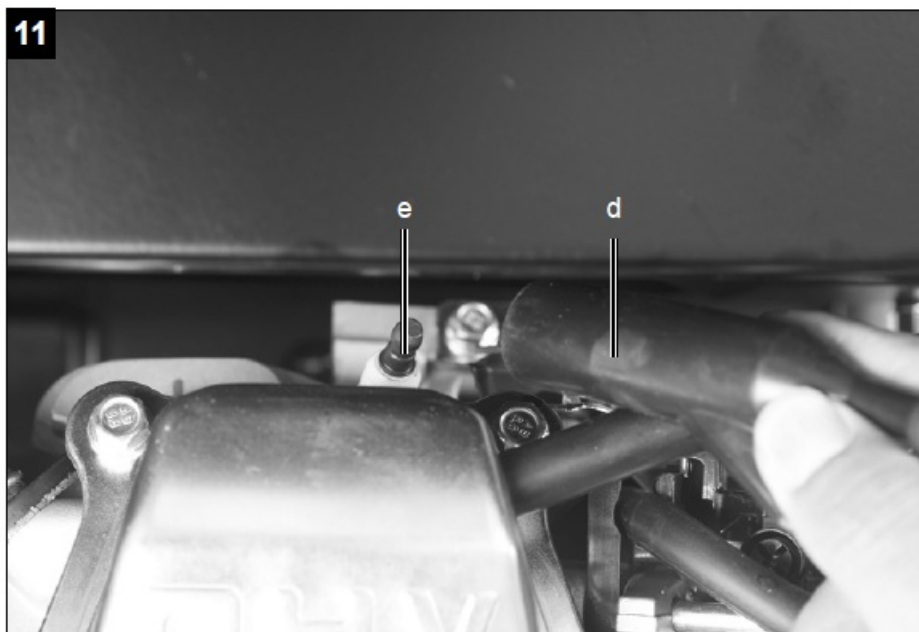
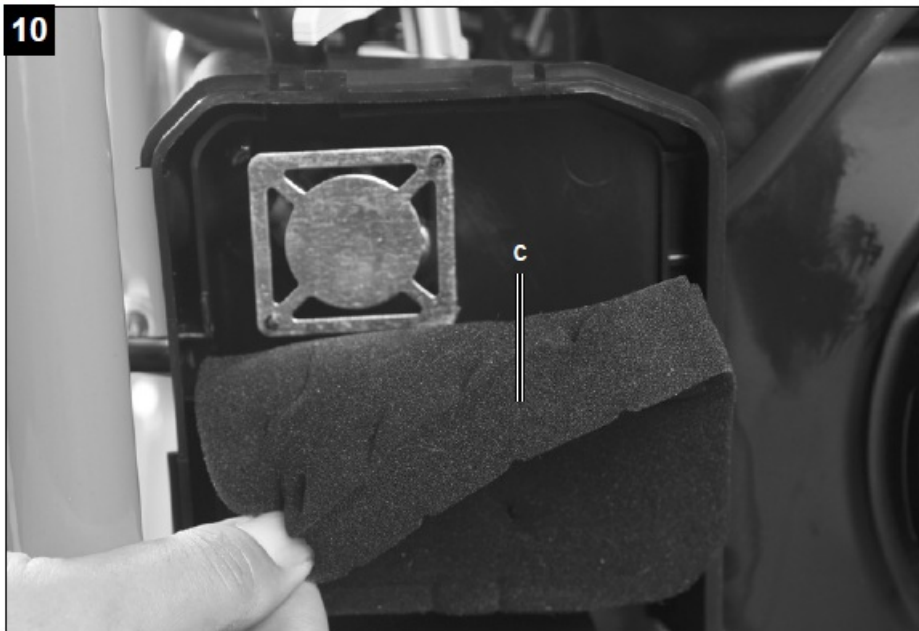
- Only fill the tank up to the marking in the fuel strainer. Note that fuel expands
- Refuel in a well-ventilated area with the engine stopped. If the engine was in operation immediately before, allow it to cool first.
- Never refuel the engine in a building where the petrol vapour may come into contact with flames or sparks.
- Do not smoke whilst refuelling or in the area in which the petrol is stored and prevent naked flames or sparks under these circumstances.
- After refuelling, ensure that the tank cover is closed correctly and securely again. Take care!
- Mop up spilled petrol immediately.
- If petrol is spilled, ensure that the area is dried before starting the engine.
- Avoid repeated or long contact of the fuel with the skin and avoid breathing in the fumes.
- Keep the fuel out of the reach of children.
- If there are occasional taps or knocks from the engine, you should use a different brand of petrol. If this does not solve the problem, contact an authorised dealer.

WARNING: Operating the engine with continuous ignition tapping or knocking can result in damage to the engine. Operating the engine with continuous ignition tapping or knocking is considered improper use. The manufacturer

is not responsible for the resulting damages; the user solely bears the risk.

INSTALLATION INSTRUCTIONS





Initial operation

Earthing the generator

The power unit is equipped with an earth that connects the frame structure of the unit to the earth connections in the a.c. sockets. The earth is not connected to the a.c. neutral cables. If the power unit is tested with a phasing tester, it does not have the same ground loop as a normal household appliance. To protect against electric shock, ensure that the generator is earthed. Connect the generator and the external earth source, e.g. a water pipe that is driven into the earth or a copper pipe that is driven into the earth, with a thick wire.

WARNING: Do not use any pipes that carry inflammable substances as an earth source.

Start the engine

1. Turn the fuel valve (16) to ON.

When the engine is cold:

Turn the choke lever (18) to the CLOSED position.

When the engine is warm:

Turn the choke lever to OPEN Set the manual choke lever to OPEN.

2. Turn the engine switch (12) to the ON position.
3. Pull the recoil starter slowly until resistance is noticeable. Then pull hard.
4. Return the choke lever to the OPEN position while the engine warms up.

WARNING: Ensure that you do not injure your fingers. If the motor does not start and a piston was not raised completely, the starter grip may suddenly spring back to the engine. Avoid the starter grip springing back against the engine. Feed it back slowly by hand to ensure that the cover is not damaged.

Shut the engine off

1. Switch the generator off
2. Set the engine switch to off
3. Turn the fuel valve to off

In an emergency, set the engine switch to off

Electrical devices that can be connected

This power unit can power light bulbs, heaters, drills, water pumps, etc. Do not exceed the load limit specified for the power unit. The power unit may not be used to power devices that have a high power requirement. The power unit cannot be used for precision devices such as computers. These precision devices may be damaged by distortions caused by the broad wave when the power unit's power is output. Do not connect the power unit to the electrical installation of a building.

WARNING: Connection to the electrical installation of a building may result in the electric current being returned to the mains supply wires. This return causes a risk of a fatal electric shock for employees of the electricity supplier or other persons who touch the wires during a power failure. Connection to the electrical installation of a building can also cause the electric current of the electricity supplier to return to the power unit. When the mains supply is restored, the power unit may explode, burn or cause a fire to break out in the electrical installation of the building.

Circuit breaker (8)

The fuse will automatically break the generator with a short circuit or in the case of a significant overload of the generator at the power outlet. If the fuse automatically jumped out into position off check that the connected electrical appliance is in perfect condition and does not exceed the load limit of the circuit before you push the fuse.

Cleaning

WARNING

Carry out maintenance work only with the stopped engine. Pull the spark plug cap from the spark plug. We recommend that you clean the equipment immediately after you use it. Clean the equipment regularly with a damp cloth and some soft soap. Do not use cleaning agents or solvents; these may be aggressive to the plastic parts in the equipment. Ensure that no water can get into the interior of the equipment.

Transport

1. Allow the engine to cool before transporting.
2. Before transporting the power unit, switch the ignition (12) to the (off) position and turn the fuel valve (16) to the (off) position shown at machine.
3. Keep the power unit level so that no petrol is spilled. Petrol vapour or spilled petrol may ignite.
4. Ensure that the power unit does not fall and do not subject it to any blows during transport.

Storage

Store the device and its accessories in a dark, dry and frost-proof place that is inaccessible to children. The optimum storage temperature is between 5 and 30°C. Cover the electrical tool in order to protect it from dust and moisture. Store the operating manual with the electrical tool. When storing for a long period of time

1. Empty the fuel tank and run the carburettor empty.
2. Unscrew the spark plug.
3. Pour approximately 20 ml of clean engine oil through the spark plug hole into the cylinder.
4. Pull the starter rope out slowly so that the oil distributes itself in the engine and screw the spark plug back in.
5. Remove all dirt, deposits and dust from the engine and the cylinder head ridges.
6. Clean the air filter or replace it if it is very dirty.
7. Store the generator securely in a dry place that is inaccessible to children.
8. The unit may not be stored in the open.
9. Cover the unit and the engine to protect against dust and store in a clean, dry place.

When re-commissioning after a long period of storage

1. Change the engine oil.
2. Fill with fresh petrol before starting the motor after the storage period.

If the engine is not used for more than one month, changes to the petrol quality may result in difficulties starting the engine or in other issues. To prevent this, loosen the carburettor's drain screw and allow the petrol to run out. Also open the fuel valve so that the petrol drains from the tank.

Maintenance

WARNING

Carry out maintenance work only with the stopped engine. Pull the spark plug cap from the spark plug.

Oil change

Change the engine oil after 25 operating hours, then after 50 hours or every three months. Drain the engine oil when the engine is hot.

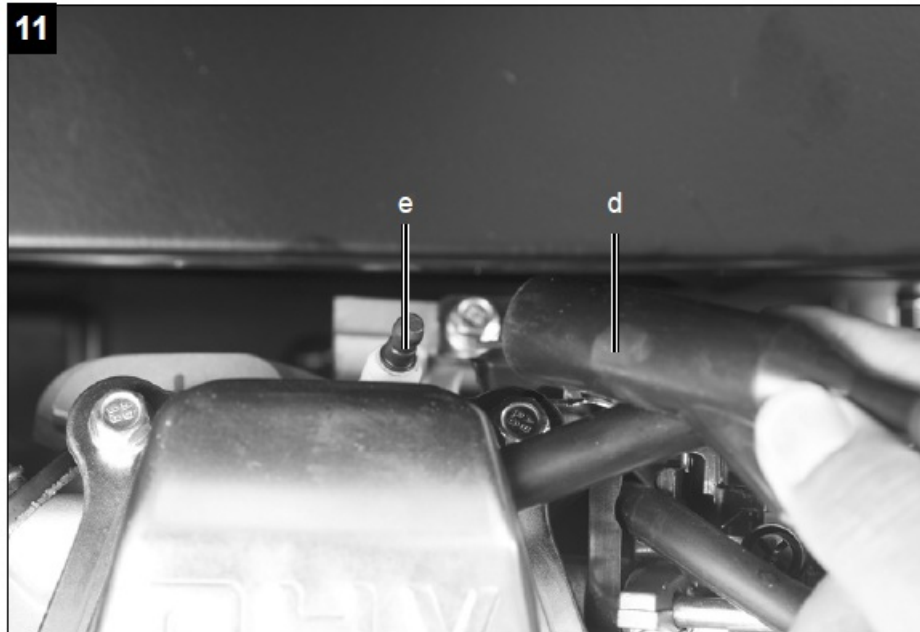
1. Warm the engine up.
2. Switch the engine off.
3. Place a container that is large enough to collect the used oil under the oil drain screw (9).
4. To drain the oil, remove the oil filler cap (7) and the oil drain screw (9).
5. Drain the oil
6. Re-attach the oil drain screw (9) with a sealing washer and tighten.
7. Pour the recommended engine oil into the oil filler hole.

Note! Screw the oil filler cap (7) on tightly. Capacity: approximately 0,6 litres

Dispose of the drained oil properly at a local used oil collection point. Dumping used oil in the soil or mixing it with waste is prohibited.

Check the spark plug

Switch off the engine and allow it to cool. Caution! Danger of burning



Clean or replace spark plug as required:

1. Remove the spark plug connector (d) and clean any dirt from the spark plug area.
2. Unscrew the spark plug (e) and check it.
3. If there is any damage, e.g. cracks or chips, replace the spark plug.
4. Clean the spark plug electrodes with a wire brush.
5. Check and set the electrode gap (0,6 mm)
6. Screw the spark plug in and tighten with the spark plug spanner.
7. Place the spark plug connector on the spark plug

When replacing, ensure that no dirt gets into the cylinder head.

Check the fit of the spark plug.

A loose spark plug can cause damage to the engine by overheating. Pulling too hard can damage the thread in the cylinder head. The manufacturer is not responsible for the result-ing damages; the user solely bears the risk. Only use the recommended spark plugs or identical spark plugs.

Clean the air filter

1. Loosen the locking (b)
2. Remove the filter cover (17)
3. Clean the foam pre-filter (c) in a non-flammable solvent.

Attention: Do not use petrol or cleaning solvents with a low flash point to clean the air filter element. This could result in fire or explosion.

4. Squeeze the pre-filter in order to remove the sol-vent/soapy water.
5. Clean the paper filter by tapping it.
6. Rinse the washed filter element with clean water.
7. Allow the filter element to dry or blow it dry with compressed air.

8. Close the filter cover again and secure it by using the locking.

If the engine is operated in very dusty environments, clean the air filter daily or after every ten operating hours.

Never run the engine without an air filter or with a damaged air filter. This would allow dirt into the engine, which would result in severe damage to the engine. The manufacturer is not responsible for the resulting damages; the user solely bears the risk. Important note in case of repair: When returning the generator for repair, for safety reasons, ensure that it is free of oil and petrol when it is sent to the service centre. Service information Please note that the following parts of this product are subject to normal or natural wear and that the following parts are therefore also required for use as consumables. Wear parts*: spark plug * Not necessarily included in the scope of delivery! Spare parts and accessories can be obtained from our service centre. To do this, scan the QR code on the cover page.



Disposal and recycling

The equipment is supplied in packaging to prevent it from being damaged in transit. The raw materials in this packaging can be reused or recycled. The equipment and its accessories are made of various types of material, such as metal and plastic. Defective components must be disposed of as special waste. Ask your dealer or your local council.

Old devices must not be disposed of with household waste! This symbol indicates that this product must not be disposed of together with domestic waste in compliance with the Directive (2012/19/EU) pertaining to waste electrical and electronic equipment (WEEE). This product must be disposed of at a designated collection point. This can occur, for example, by handing it in at an authorised collecting point for the recycling of waste electrical and electronic equipment. Improper handling of waste equipment may have negative consequences for the environment and human health due to potentially hazardous substances that are often contained in electrical and electronic equipment. By properly disposing of this product, you are also contributing to the effective use of natural resources. You can obtain information on collection points for waste equipment from your municipal administration, public waste disposal authority, an authorised body for the disposal of waste electrical and electronic equipment or your waste disposal company.

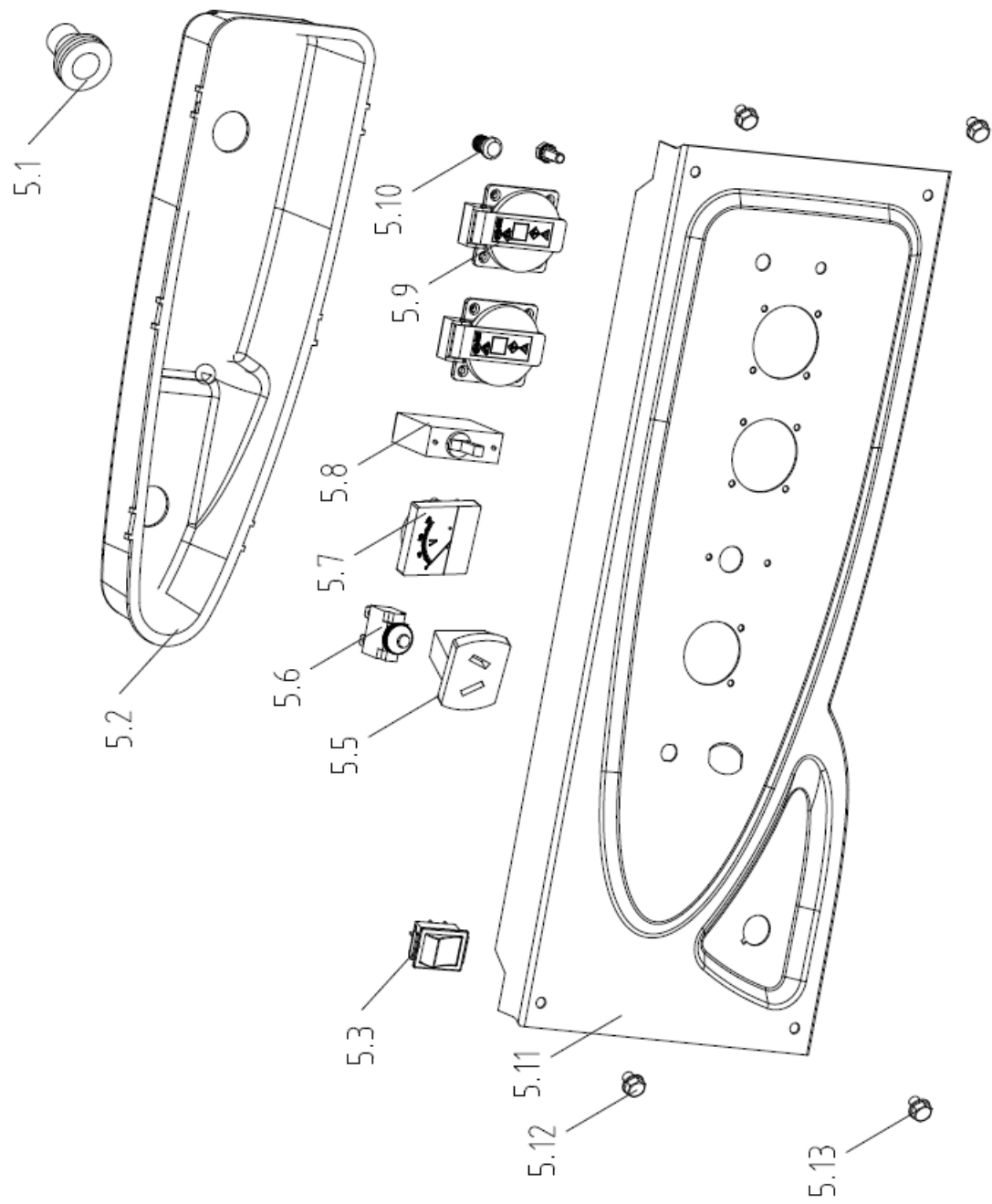
Troubleshooting

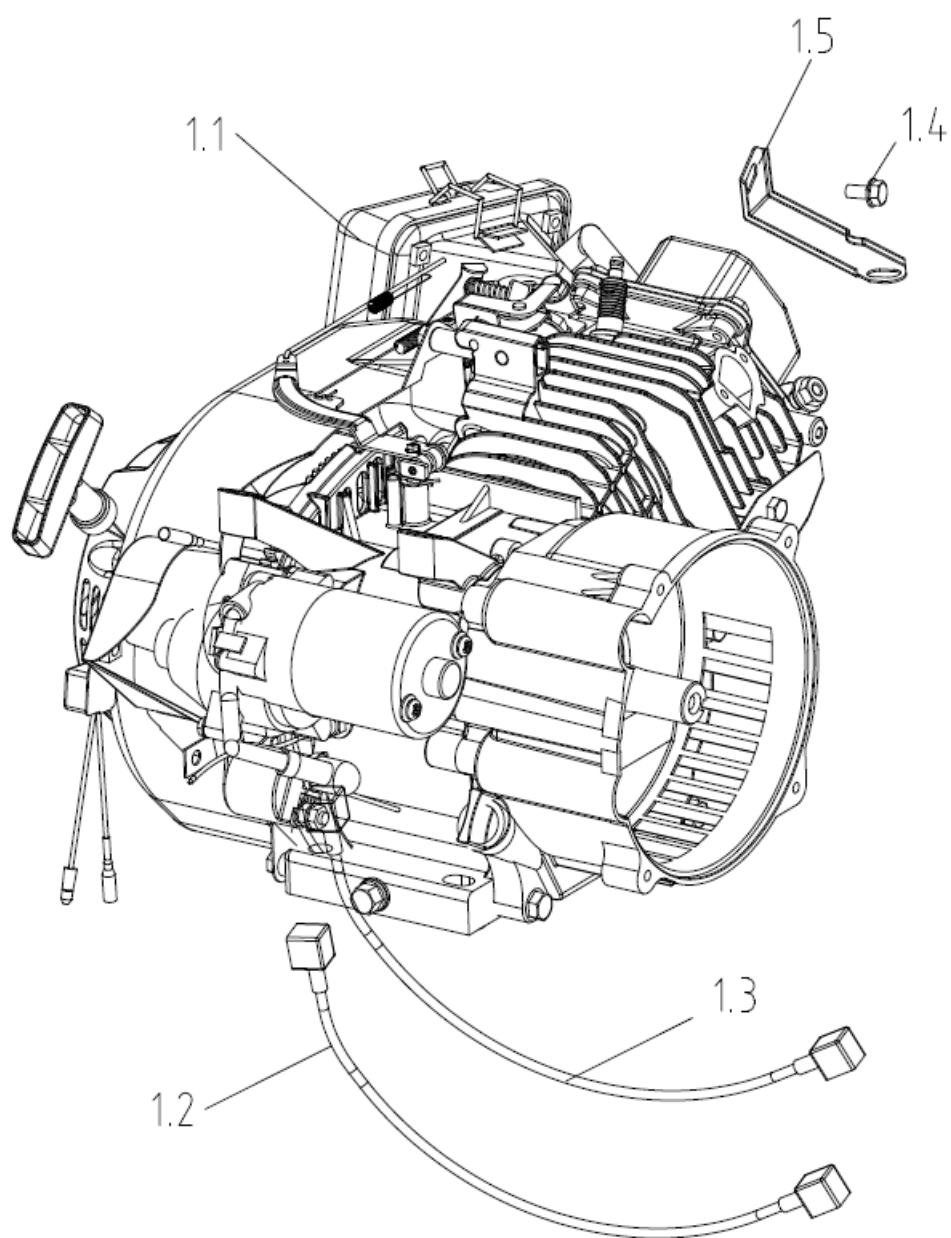
The table below contains a list of error symptoms and explains what you can do to solve the problem if your tool fails to work properly. If the problem persists after working through the list, please contact your nearest service workshop.

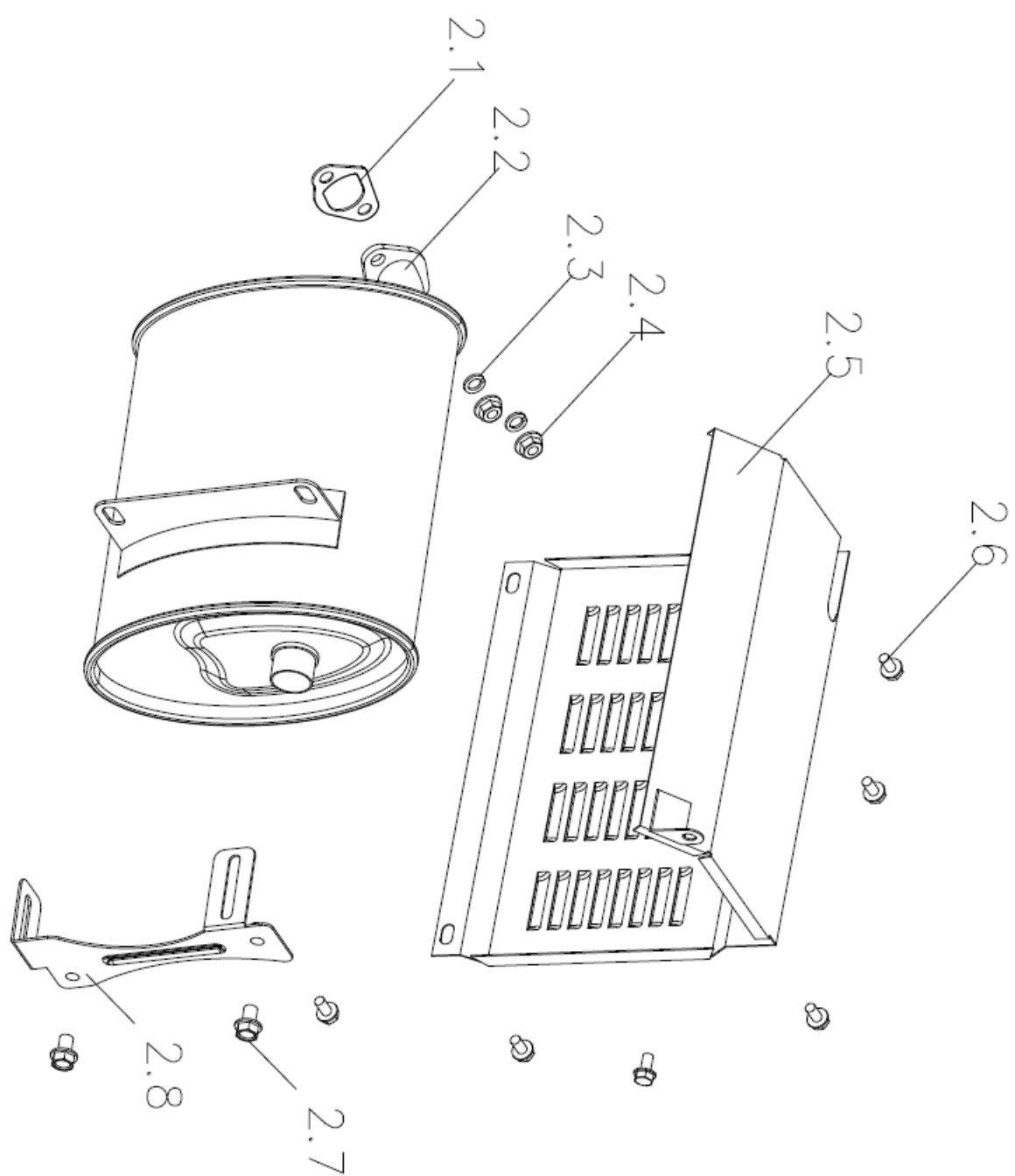
Fault	Cause	Remedy
Engine will not start	No fuel in the tank.	Fill the tank up.
	Fuel valve closed.	Open the fuel valve.
	Air filter dirty.	Clean the air filter.
	Engine switch is set to "OFF".	Set the engine switch to "ON".
	Recoil starter defective.	Repair the recoil starter.
	No engine oil.	Refill the engine oil.
	Spark plug dirty.	Clean the spark plug
	Engine oil level too low (oil warning lamp is flashing).	Refill the engine oil.
	On/off switch for motor operation set incorrectly.	Set to the correct position
	Spark plug dirty	Clean/replace the spark plug.
	Air filter severely dirty	Clean/replace the air filter.
	Fuel contaminated/stale	Drain and replace the fuel.

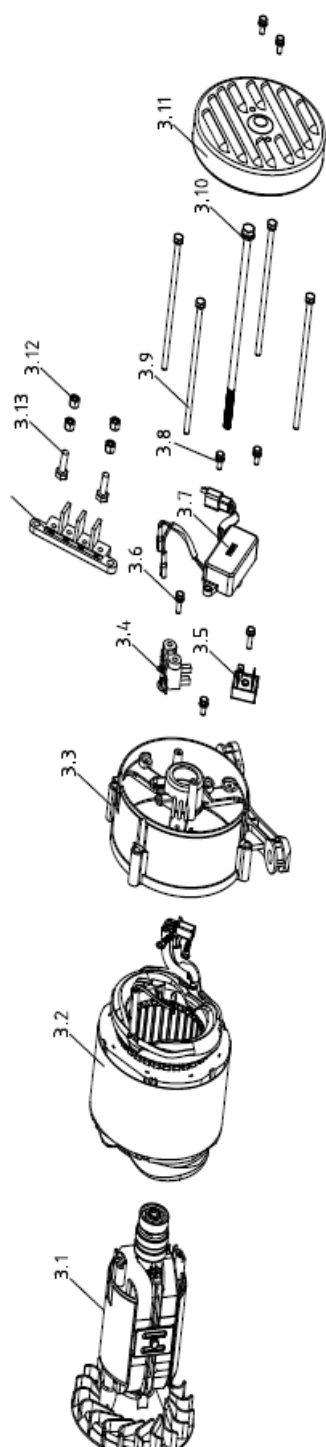
Engine is running loudly/ irregularly	Choke lever set to “CHOKE”	Set the choke lever to “RUN”
	Incorrect fuel – diesel instead of petrol	Drain the fuel and fill with the correct fuel
No electrical output	Fault in the a.c. power generator	For service under warranty, inform your representative
Engine will not switch off	Ignition switch-off wire defective	Close the fuel valve and wait until the engine shuts off; call customer service

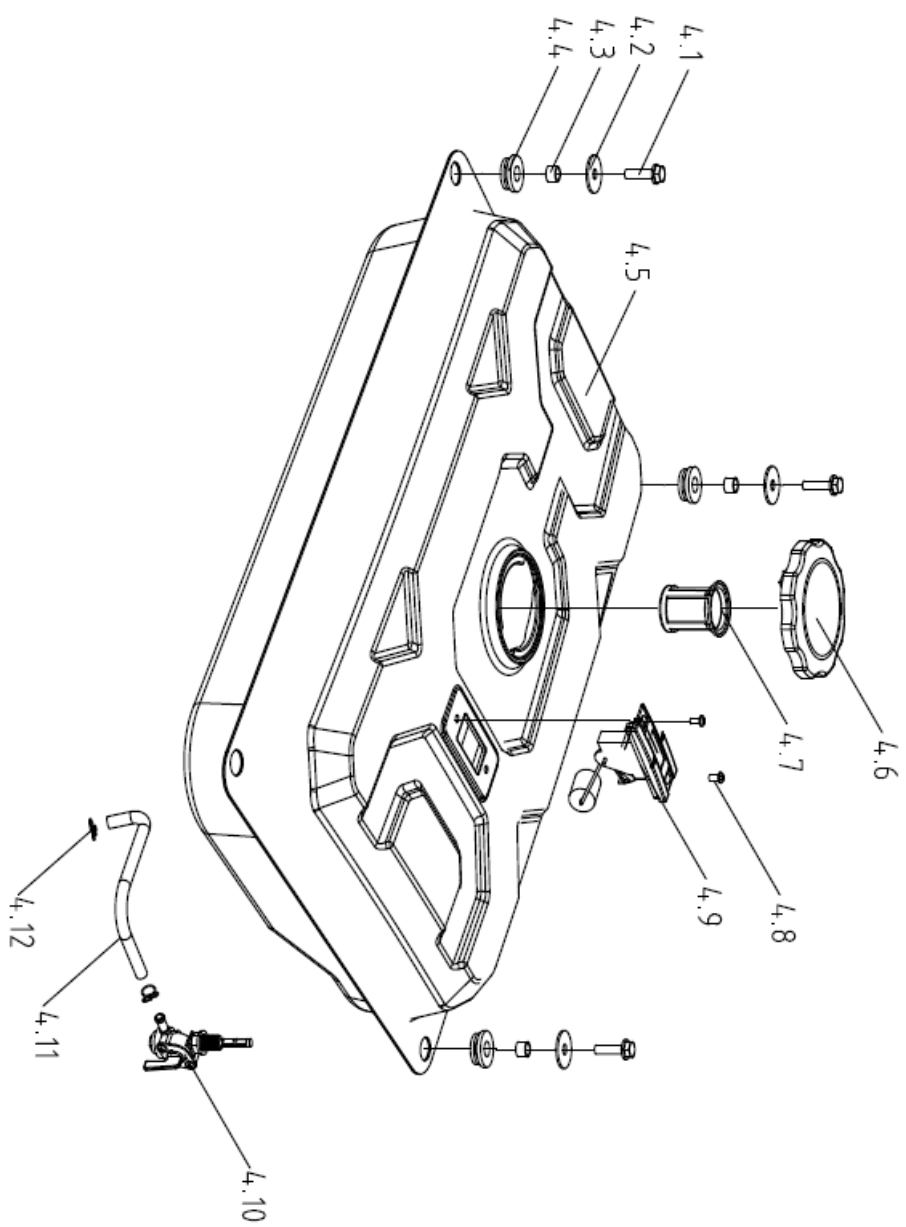
EXPLODED DIAGRAMS

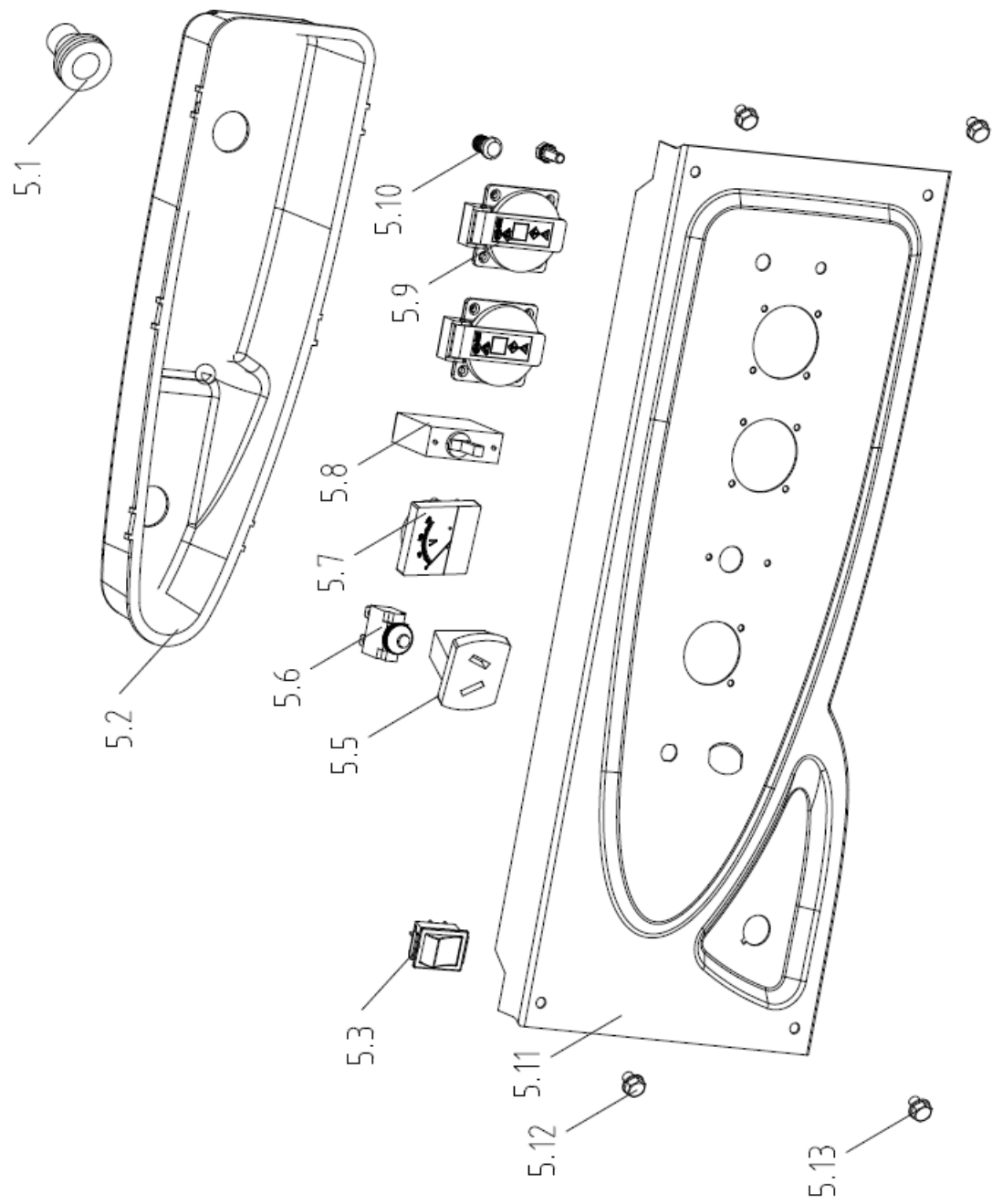


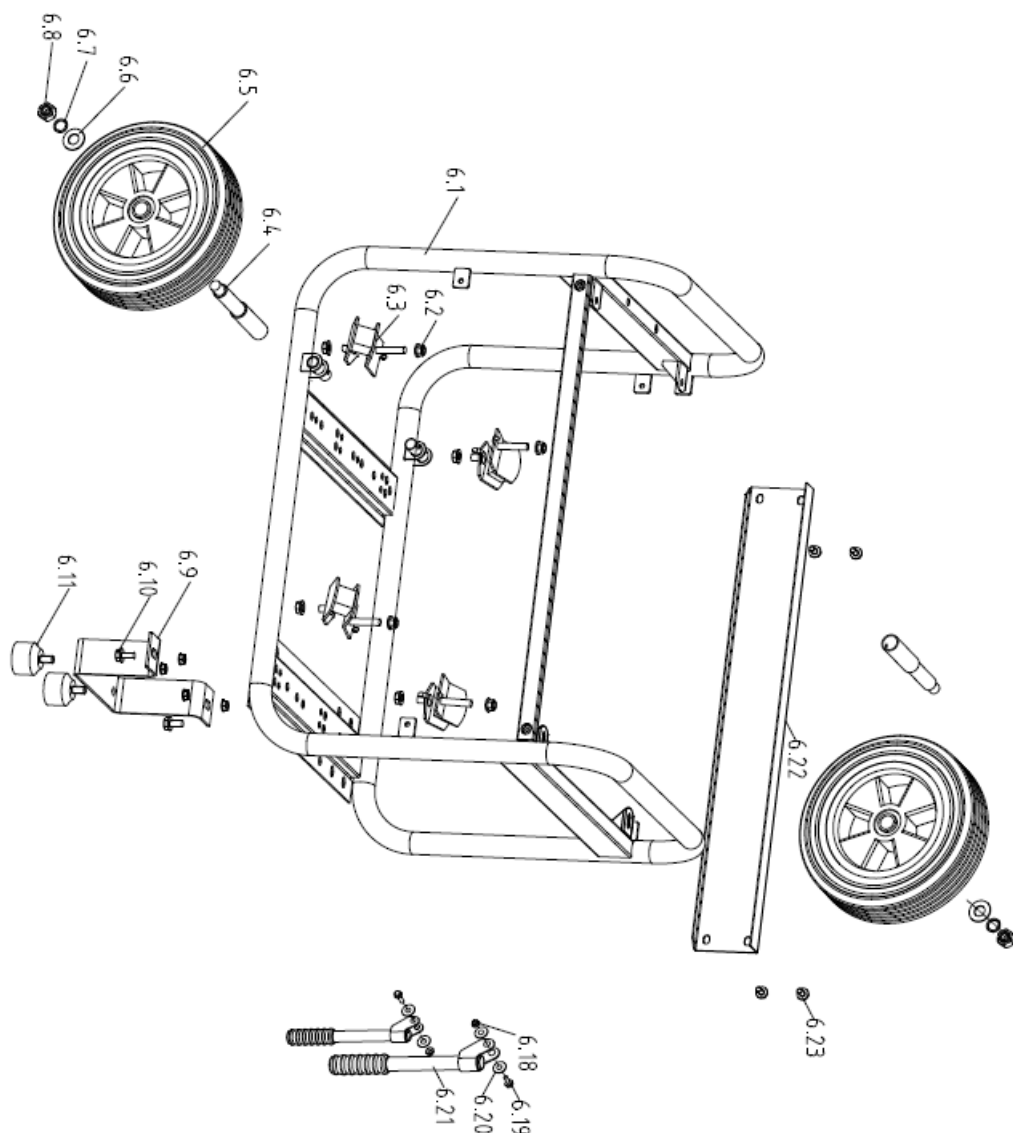












EC Declaration of Conformity

Scheppach GmbH, Günzburger Str. 69, D-89335 Ichenhausen

hereby declares the following conformity under the EU Directive and standards for the following article
Article name: ELECTRIC GENERATOR – SG3200

The object of the declaration described above fulfils the regulations of the directive 2011/65/EU of the European Parliament and Council from 8th June 2011, on the restriction of the use of certain hazardous substances in electrical and electronic equipment.

Standard references:

EN ISO 8528-13:2016; EN 60204-1:2006/A1:2009; EN 55012:2007+A1; EN61000-6-1:2007;


Warranty

Apparent defects must be notified within 8 days from the receipt of the goods. Otherwise, the buyer's rights of claim due to such defects are invalidated. We guarantee for our machines in case of proper treatment for the time of the statutory warranty period from delivery in such a way that we replace any machine part free of charge

which provably becomes unusable due to faulty material or defects of fabrication within such period of time. With respect to parts not manufactured by us we only warrant insofar as we are entitled to warranty claims against the upstream suppliers. The costs for the installation of the new parts shall be borne by the buyer. The cancellation of sale or the reduction of purchase price as well as any other claims for damages shall be excluded.

www.scheppach.com

Documents / Resources

	<p>scheppach SG3200 Power Generator [pdf] Installation Guide SG3200, Power Generator, SG3200 Power Generator</p>
---	--

References

- [🔗 scheppach | scheppach](#)
- [🔗 Kontakt & Service | scheppach | scheppach](#)