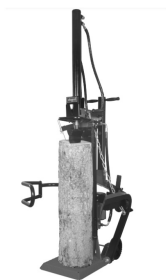


[Skip to content](#)

Manuals+

User Manuals Simplified.



scheppach HL1050 Log Splitter Instruction Manual

[Home](#) » [Scheppach](#) » **scheppach HL1050 Log Splitter Instruction Manual**

Contents [hide](#)

[1 scheppach HL1050 Log Splitter](#)

[2 Explanation of the symbols on the equipment](#)

[3 Introduction](#)

[4 Device description](#)

[5 Scope of delivery](#)

[6 Intended use](#)

[7 Safety notes](#)

[8 Additional safety instructions](#)

[9 Technical data](#)

[9.1 Noise](#)

[10 Unpacking](#)

[11 Attachment / Before starting the equipment](#)

[12 Initial operation](#)

[13 E- Motor](#)

[14 Functional test](#)

[15 Operating the log lifter:](#)

[15.1 Resetting the log lifter](#)

[15.2 Transport position of the log lifter:](#)

[16 Electrical connection](#)

[17 Cleaning](#)

[18 Transport](#)

[19 Storage](#)

[20 Maintenance](#)

[21 Service information](#)

[22 Disposal and recycling](#)

[23 Troubleshooting](#)

[24 Warranty GB](#)

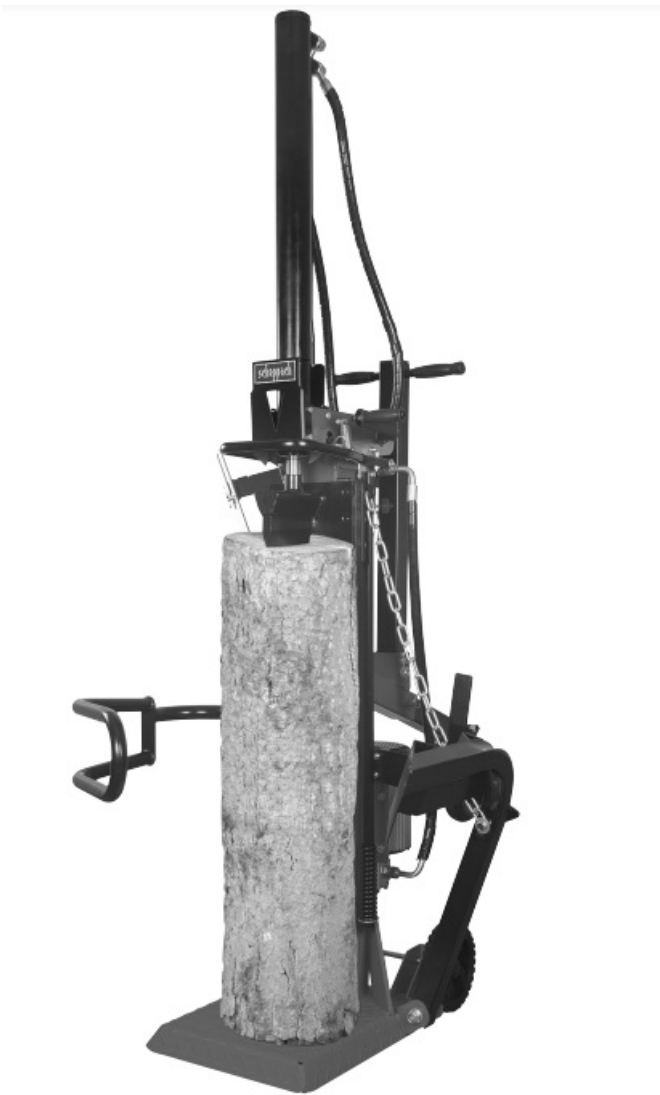
[25 Documents / Resources](#)

[25.1 References](#)

[26 Related Posts](#)



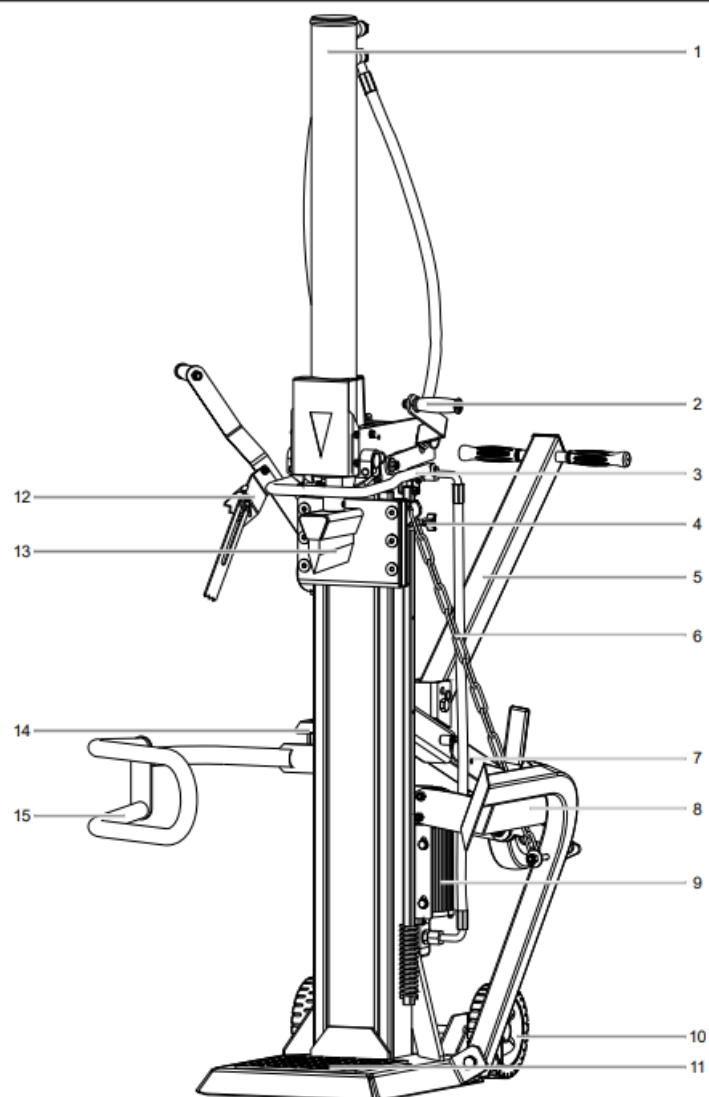
scheppach HL1050 Log Splitter

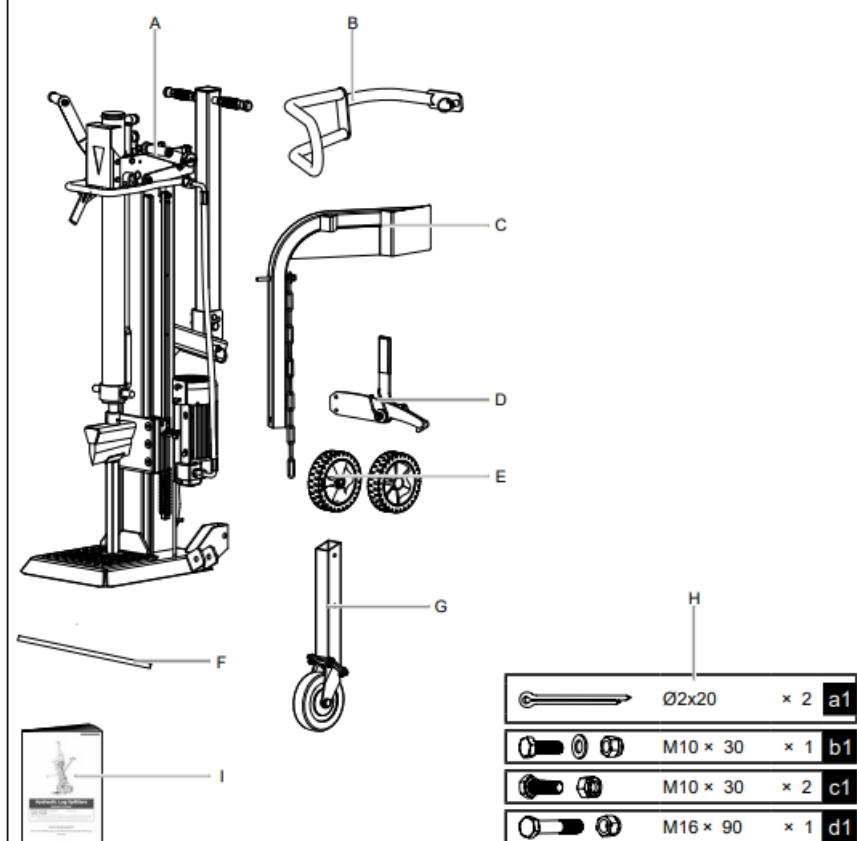


Explanation of the symbols on the equipment

The use of symbols in this manual is intended to draw your attention to possible risks. The safety symbols and the explanations that accompany them must be perfectly understood. The warnings in themselves do not remove the risks and cannot replace correct actions for preventing accidents.

Introduction





Manufacturer:

- schepach
- Fabrikation von Holzbearbeitungsmaschinen GmbH Günzburger Straße 69
- D-89335 Ichenhausen

Dear customer,

We hope your new tool brings you much enjoyment and success.

Note:

According to the applicable product liability laws, the manufacturer of the device does not assume liability for damages to the product or damages caused by the product that occurs due to:

- Improper handling,
- Non-compliance of the operating instructions,
- Repairs by third parties, not by authorized service technicians,
- Installation and replacement of non-original spare parts,
- Application other than specified,
- A breakdown of the electrical system that occurs due to the non-compliance of the electric regulations and VDE regulations 0100, DIN 57113 /VDE0113.

We recommend:

Read through the complete text in the operating instructions before installing and commissioning the device. The operating instructions are intended to help the user to become familiar with the machine and take advantage of its application possibilities in accordance with the recommendations. The operating instructions contain important information on how to operate the machine safely, professionally, and economically, how to avoid danger, costly repairs, re-duce downtimes and how to increase the reliability and service life of the machine.

In addition to the safety regulations in the operating instructions, you have to meet the applicable regulations that apply for the operation of the machine in your country. Keep the operating instructions pack-age with the machine at all times and store it in a plastic cover to protect it from dirt and moisture. Read the instruction manual each time before operating the machine and carefully follow its information. The machine can only be operated by persons who

were instructed concerning the operation of the machine and who are informed about the associated dangers. The minimum age requirement must be complied with.

In addition to the safety instructions in this operating manual and the separate regulations of your country, the generally recognized technical rules for operating woodworking machines must also be observed.

We accept no liability for accidents or damage that occur due to a failure to observe this manual and the safety instructions.

Device description

1. Cylinder
2. Operating handle
3. Return bracket
4. Splitting stroke limiter
5. Transport handle
6. Chain
7. Additional transport wheel
8. Log lifter
9. Motor
10. Transport wheels
11. Work table
12. Operating handle / retaining claw
13. Splitting wedge
14. Combination switch/plug
15. Supporting arm

Scope of delivery

- A. Splitter
- B. Supporting arm
- C. Log lifter
- D. Hook
- E. Transport wheels
- F. Wheel axle
- G. Additional transport wheel
- H. Enclosed accessories bag (a1,b1,c1,d1)
- I. Operating manual

Intended use

The equipment is to be used only for its prescribed purpose. Any other use is deemed to be a case of misuse. The user/operator and not the manufacturer will be liable for any damage or injuries of any kind caused as a result of this. The equipment is to be operated only with suitable saw blades. It is prohibited to use any type of cut-ting-off wheel. To use the equipment properly you must also observe the safety information, the assembly instructions and the operating instructions to be found in this manual.

All persons who use and service the equipment have to be acquainted with this manual and must be informed about the equipment's potential hazards. It is also imperative to observe the accident prevention regulations in force in your area. The same applies for the general rules of health and safety at work.

The manufacturer will not be liable for any changes made to the equipment nor for any damage resulting from such changes.

- The hydraulic log splitter can only be used in a vertical position. Logs may only be split along the direction of the fiber. Log dimensions are:
Log lengths 1040 mm
Ø min. 100 mm, max. 300 mm
- Never split logs in a horizontal position or against the direction of the fiber.
- Observe the safety, working, and maintenance instructions of the manufacturer, as well as the dimensions given in the chapter Technical data.
- The applicable accident prevention regulations as well as all generally recognized safety rules must be adhered

to.

- Only persons who have been trained in the use of the machine and have been informed of the various dangers may work with the machine and service or repair it. Arbitrary modifications of the machine release the manufacturer from any responsibility for resulting damage.
- The machine may only be used with original accessories and original tools of the manufacturer.
- Any other use exceeds authorization. The manufacturer is not responsible for any damages resulting from unauthorized use; risk is the sole responsibility of the operator.

The machine may be operated only with original parts and original accessories of the manufacturer.

The safety, work, and maintenance instructions of the manufacturer, as well as the dimensions indicated in the Technical Data section, must be adhered to.

Please note that our equipment has not been designed for use in commercial, trade or industrial applications. Our warranty will be voided if the equipment is used in commercial, trade or industrial businesses or for equivalent purposes.

Safety notes

WARNING: When you use electric machines, always observe the following safety instructions in order to reduce the risk of fire, electric shock, and injuries.

Please read all the instructions before you work with this machine.

- Observe all safety notes and warnings attached to the machine.
- See to it that safety instructions and warnings attached to the machine are always complete and perfectly legible.
- Protection and safety devices on the machine may not be removed or made useless.
- Protection and safety devices on the machine may not be removed or made useless.
- Check electrical connection leads. Do not use any faulty connection leads.
- Before putting into operation check the correct function of the two-hand control.
- Operating personnel must be at least 18 years of age. Trainees must be at least 16 years of age, but may only operate the machine under adult supervision.
- Wear working gloves when working.
- Caution when working: There is a danger to fingers and hands from the splitting tool.
- Use adequate support when splitting heavy or bulky logs.
- Before starting any conversion, setting, cleaning, maintenance or repair work, always switch off the machine and disconnect the plug from the power supply.
- Connections, repairs, or servicing work on the electrical equipment may only be carried out by an electrician.
- All protection and safety devices must be replaced after completing repair and maintenance procedures.
- When leaving the work place, switch off the machine and disconnect the plug from the power supply.
- Do not reach into the splitting area.
- No other persons are permitted to stand in the working area.
- Do not operate the log splitter in its transport position.
- Blocking the two-hand control and/or bypassing the control elements of the two-hand control is not permitted, as this may result in particular injuries when operating the machine.
- The manufacturer shall not be liable for damage resulting from unauthorized changes to the machine.
- People who are not familiar with the operating manual, children under the age of 16 and people under the influence of alcohol, drugs or medication are not permitted to operate the device.
- Do not leave the machine running unattended.

Additional safety instructions

- The log splitter may only be operated by one person.
- Wear protective gear like safety goggles or other eye protection, gloves, safety shoes etc. to protect yourself from possible injuries.
- Never split logs containing nails, wire, or other foreign objects.
- Already split wood and wood chips can be dangerous. You can stumble, slip or fall down. Keep the working area tidy.
- While the machine is switched on, never put your hands on moving parts of the machine.
- Only split logs with a maximum length of 1040 mm.

WARNING! This electric tool generates an electromagnetic field during operation. This field can im-pair active or passive medical implants under certain conditions. In order to prevent the risk of serious or deadly injuries, we recommend that persons with medical implants consult with their physician and the manufacturer of the medical implant prior to operating the electric tool.

Remaining hazards

The machine has been built using modern technology in accordance with recognized safety rules. Some remaining hazards, however, may still exist.

- The splitting tool can cause injuries to fingers and hands if the wood is incorrectly guided or supported.
- Thrown pieces can lead to injury if the work piece is not correctly placed or held.
- Injury through electric current if incorrect electric connection leads are used.
- Even when all safety measures are taken, some remaining hazards which are not yet evident may still be present.
- Remaining hazards can be minimized by following the safety instructions as well as the instructions in the chapter Authorized use and in the entire operating manual.
- Health hazard due to electrical power, with the use of improper electrical connection cables.
- Release the handle button and switch off the machine prior to any operations.
- Avoid accidental starts of the machine: Do not press the start button while inserting the plug into the socket.
- Use the tools recommended in this manual to obtain the best results from your machine.
- Always keep hands away from the work area when the machine is running.

Technical data

Motor	230V~ / 50Hz	400V~ / 50Hz
Input P1	3000 W	2100 W
Output P2	2200 W	1500 W
Operating mode	S6 40%	S6 40%
Motor speed	2800 min-1	2800 min-1
Phase inverter	no	yes

Dimensions D x W	1420 x 1320	1420 x 1320
x H	x 2280 mm	x 2280 mm
Wood length	560 – 1040	560 – 1040
min. – max.	mm	mm
Wood diameter	100 – 300	100 – 300
min. – max.	mm	mm
Power max.	10 t	10 t

(slow)

Return speed	44 mm/s	44 mm/s
Hydraulic oil	HLP32	HLP32
Oil quantity	6 l	6 l
Weight	156 kg	152,4 kg

Subject to technical changes!

Noise

Warning: Noise can have serious effects on your health. If the machine noise exceeds 85 dB (A), please wear suitable hearing protection.

Characteristic noise emission values (230 V~)

- Sound power level LWA: 92,7 dB (A)
- Sound pressure level LpA 73,8 dB (A)
- Uncertainty KWA/pA: 3 dB

Characteristic noise emission values (400 V~)

- Sound power level LWA: 90,6 dB (A)
- Sound pressure level LpA 75,2 dB (A)
- Uncertainty KWA/pA: 3 dB

* S6 40%, continuous operation periodic duty. Identical duty cycles with a period at load followed by a period at no load. Running time 10 minutes; duty cycle is 40% of the running time.

Pressure:

The performance level of the built-in hydraulic pump can reach a short-term pressure level for a splitting force of up to 10 tons. In the basic setting, hydraulic splitters are set at the factory to an approx. 10% lower output level. For safety reasons, the basic settings must not be changed by the user. Please note that external circumstances such as operating and ambient temperature, air pressure, and moisture affect the viscosity of the hydraulic oil. In addition, manufacturing tolerances and maintenance errors can affect the reachable pressure level.

Unpacking

Open the packaging and remove the device carefully. Remove the packaging material as well as the packaging and transport bracing (if available).

Check that the delivery is complete.

Check the device and accessory parts for transport damage. In case of complaints, the dealer must be informed immediately. Subsequent complaints will not be accepted.

If possible, store the packaging until the warranty period has expired. Read the operating manual to make yourself familiar with the device prior to using it. Only use original parts for accessories as well as for wearing and spare parts. Spare parts are available from your specialized dealer. Specify our part numbers as well as the type and year

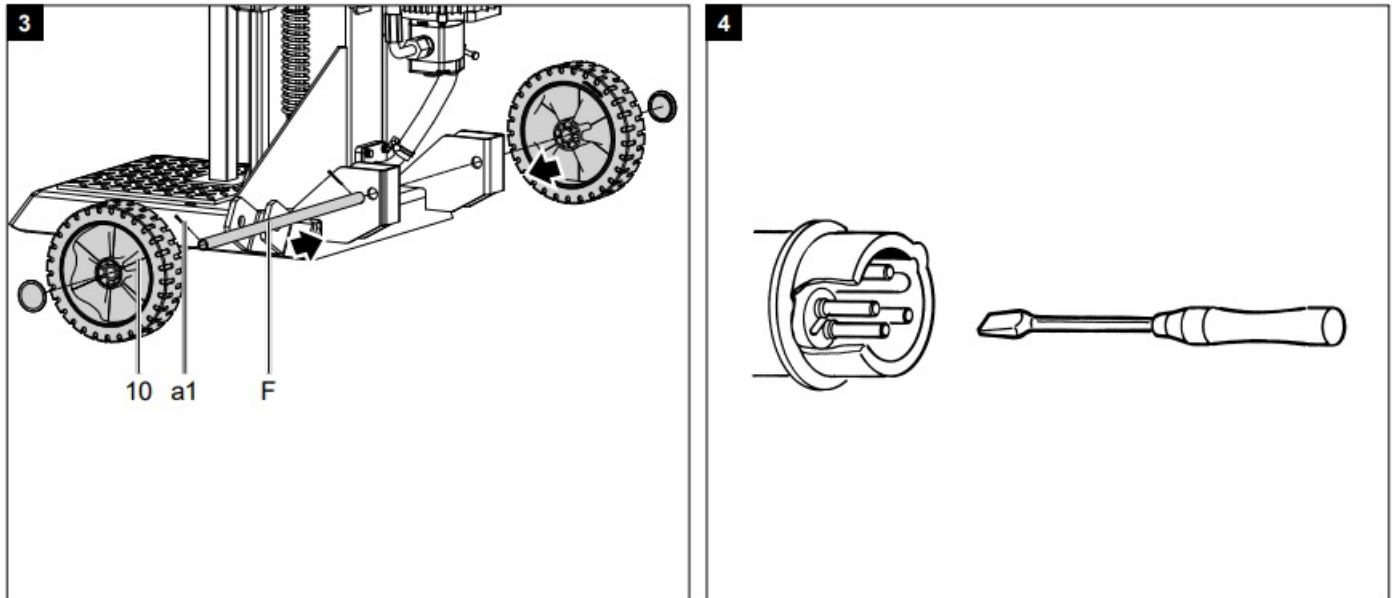
of construction of the device in your orders.

ATTENTION!

The device and packaging materials are not toys! Children must not be allowed to play with plastic bags, film and small parts! There is a risk of swallowing and suffocation!

Attachment / Before starting the equipment

Attaching the wheel axle and the wheels (enclosed accessories bag a1)

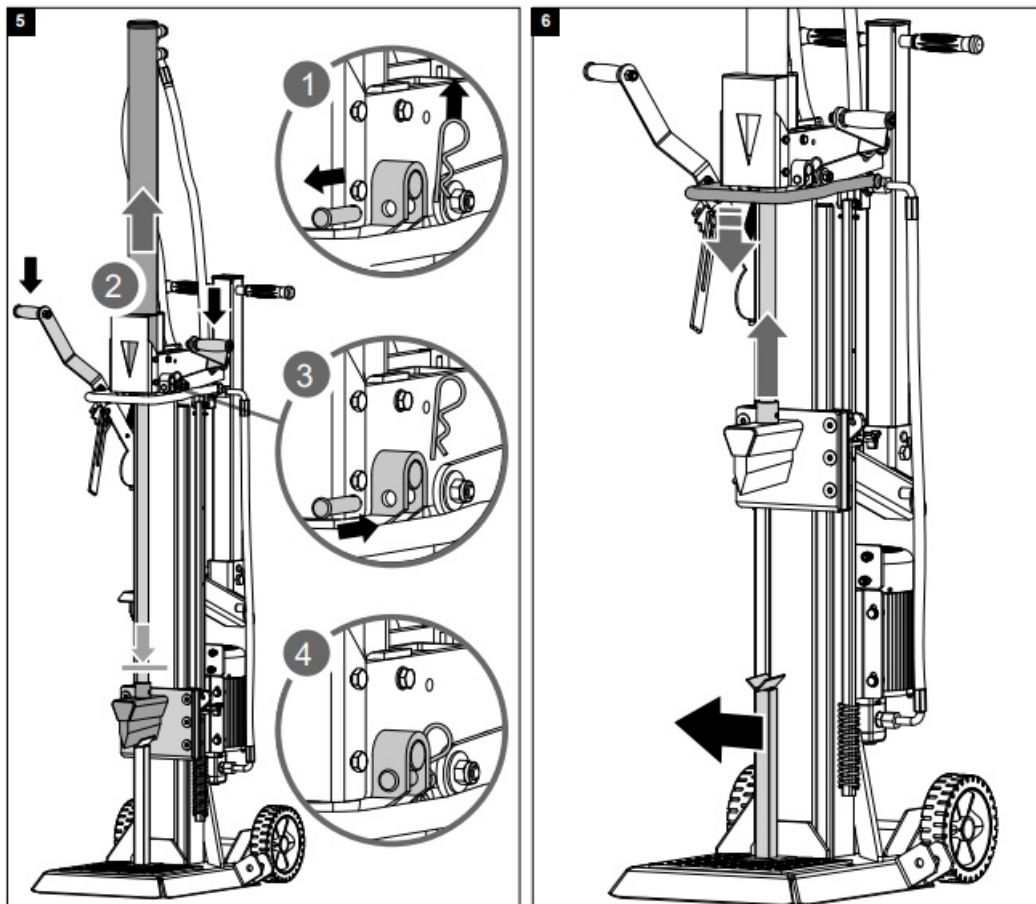


Slide the wheel axle through the holes on the bottom, rear end of the splitter.

Fit the wheels onto the wheel axle and fasten each of them with a split pin.

Then attach the wheel caps.

Putting the splitter into the work position

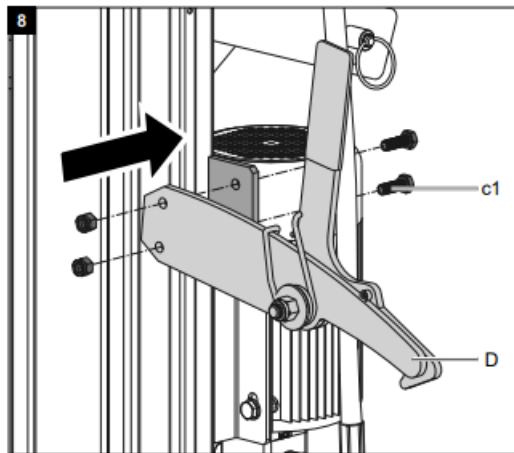
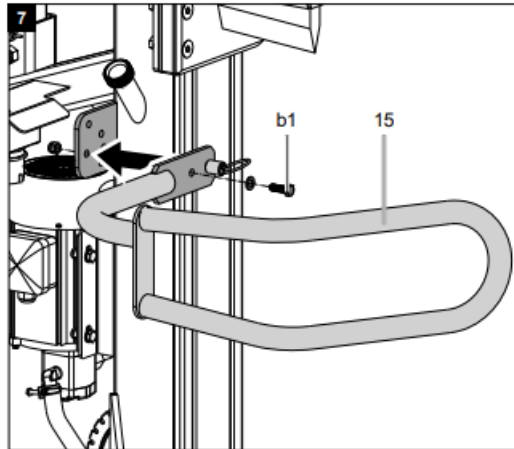


Connect the splitter to the mains. Observe the rotational direction of the motor. Remove the pre-installed pins from the cylinder guide. Lower the two control handles until the cylinder latches into the guide. Now re-fit the pins that were

previously removed in order to secure the cylinder on the firewood splitter. Secure each of the pins with a spring split pin. After that, drive the splitting blade to the top position and remove the support. You must store the support safely because it is needed every time the splitter is transported.

Attaching the supporting arm (15) (Fig. 7)

Secure the retainer arm with the screw (b1).



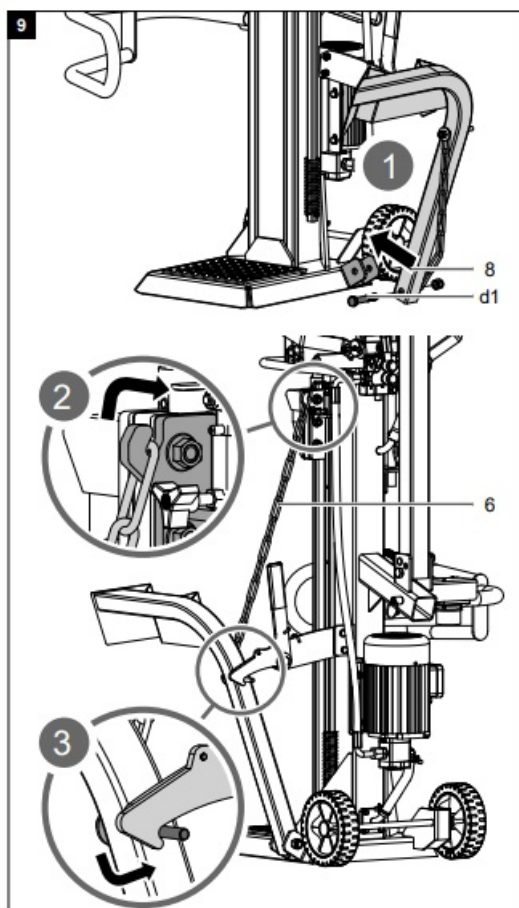
Attaching the hook (D) (Fig. 8)

Fasten the retainer hook to the frame with two screws (c1).

Attaching the log lifter (Fig. 9)

Fasten the trunk lifter to the retaining lug with the screw (d1). Attach the chain (6) to the splitting blade.

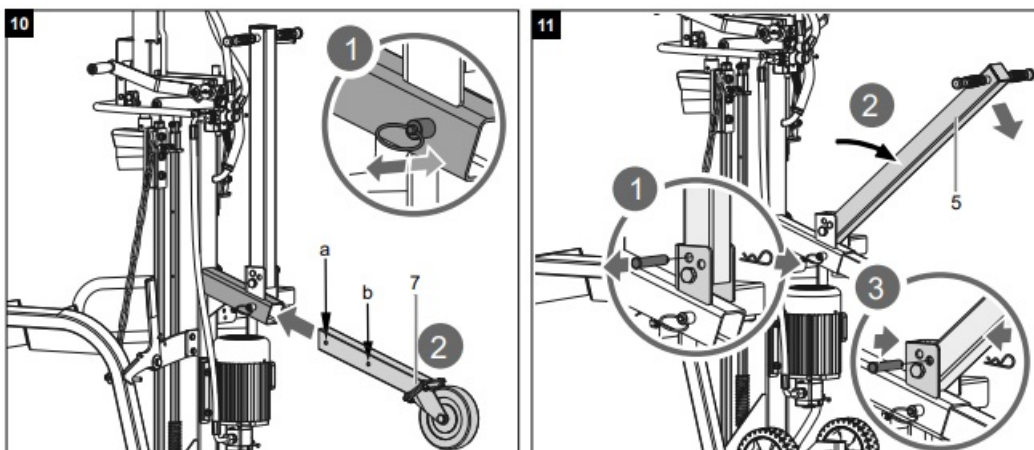
Fasten the retainer hook to the frame



Attaching the additional wheel (Fig. 10)

Attach the transport wheel as shown in Fig. 10. Fasten the wheel in the top hole (a) or the bottom hole (b) with the locking pin.

Moving the transport handle (5) to the transport position (fig. 11)



The transport handle is already pre-mounted on the splitter and is fastened in the working position. Loosen the pin and move the transport handle (5) down until the pin can be inserted into the next hole to fix the position of the transport handle. See steps 1 – 3.

IMPORTANT!

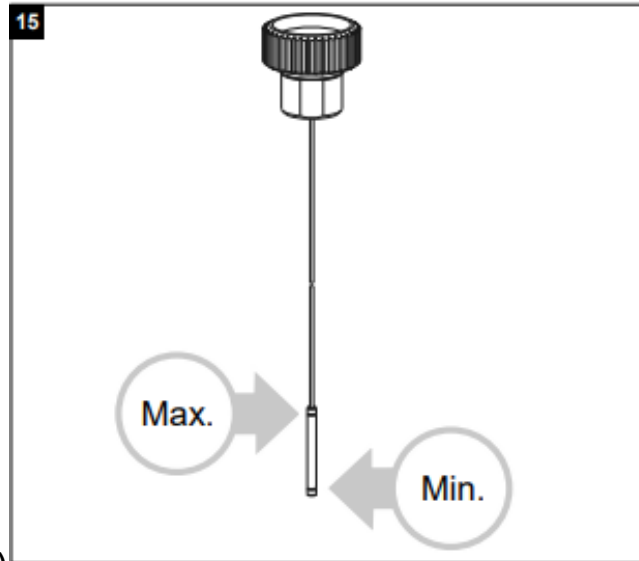
You must fully assemble the appliance before using it for the first time!

Initial operation

Make sure the machine is completely and expertly assembled. Check before every use:

- The connection cables for any defective spots (cracks, cuts etc.).
- The machine for any possible damage.
- The firm seat of all bolts.

- The hydraulic system for leakage.
- The oil level.
- Functional check



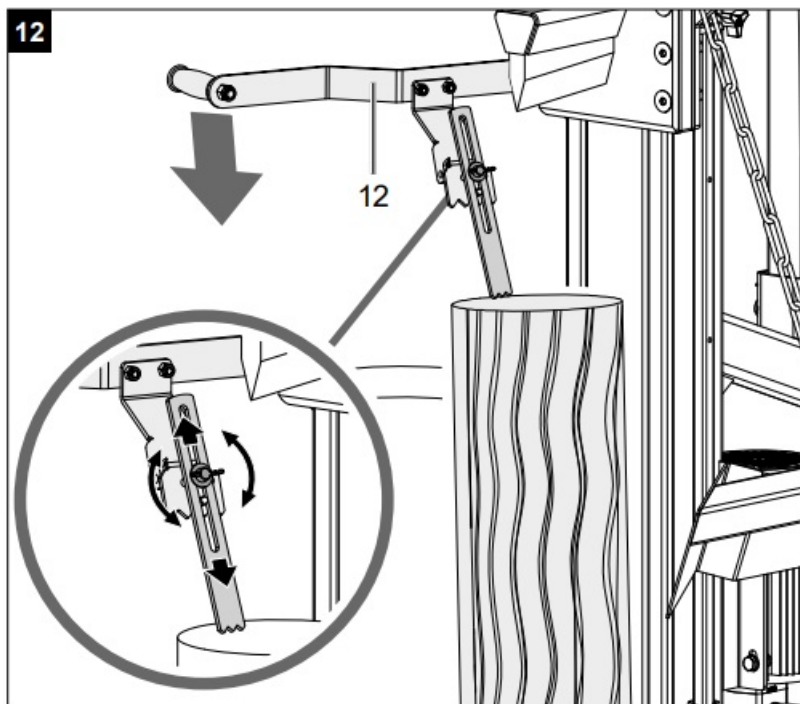
Checking the oil level (Fig. 15)

The hydraulic unit is a closed system with an oil tank, oil pump, and control valve. Check the oil level regularly before every use. Too low an oil level can damage the oil pump. The level of oil must be checked when the riving knife is pulled back. If the oil level is at the lower notch, then the oil level is at a minimum. Should this be the case, the oil must be immediately added. The upper notch indicates the maximum oil level. The machine must be on level ground. Screw in the oil dipstick fully, to measure the oil level.

E- Motor

Check the running direction of the motor. If the splitting arm is not in the top position, bring the splitting blade in the top position, using the return bracket or handles. If the splitting arm is already in the top position, activate the splitting mechanism by moving both levers down. This will move the splitting arm down. If the splitting blade does not move despite activation of the handles or return bracket, immediately turn off the machine. Turn the pole reversing unit in the plug-in module (Fig. 12) to change the rotational direction of the motor.

Never let the motor run in the wrong direction! This will inevitably destroy the pump system and no warranty claim can



be made.

Functional test

Test the function before every use.

Action:	Result:
Push both handles towards below.	Splitting knife goes down to approx. 20 cm above the table.
Let one handle loose, then the other.	Splitting knife stops in the desired position.
Press both handles or return bow upwards	Splitting knife returns to upper position

Warning!

Loosen the filling screw (Fig. 15) before commissioning. Never forget to loosen the filling screw! Otherwise, the air in the system will constantly be compressed and decompressed with the result that the seals of the hydraulic circuit will be destroyed and the wood splitter can no longer be used. In this case, the seller and the manufacturer will not be liable to warranty services.

Switching on and off (14)

Press the green button for switching on.

Press the red button for switching off.

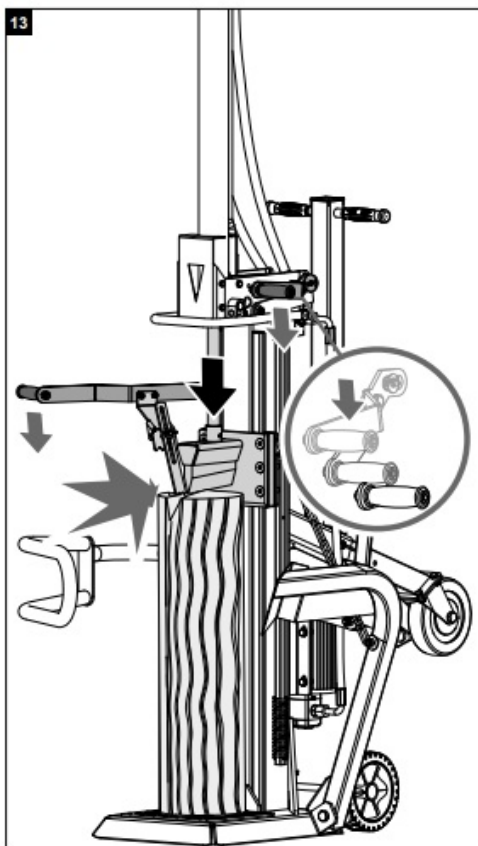
Note: Check the function of the ON/OFF unit before every use by switching on and off once.

Restarting safety in case of current interruption (no-volt release).

In case of current failure, inadvertent pulling of the plug, or a defective fuse, the machine is switched off automatically. For switching on again, press anew the green button of the switch unit.

Using the retaining claw (Fig. 12)

The height of the claw can be set at various stages to suit the length of the wood.



Splitting (Fig. 13)

- If the outside temperature is below 5°C, let the machine run idle for about 5 minutes so the hydraulic system reaches its operating temperature. Place the log under the splitting blade vertically. Caution: The splitting blade is very sharp. Risk of injury!
- Push the retaining claw (13) onto the wood to be split.
- When you push both operating levers (2 +12) down, the splitting blade goes down and splits the wood.
- Only ever split logs that have been sawn off straight.

- Split the log vertically.
- Never split it lying down or diagonally to the grain!
- Wear suitable gloves and safety boots when splitting wood.
- Split very misshapen logs from the edge.

Caution: During splitting, some logs can be under significant tension and suddenly break.

- Force jammed logs out by applying pressure in the splitting direction or by raising the riving knife. In this case, only push the handles up, do not use the return bracket. Caution: Risk of injury

Operating the log lifter (8) General information about the log lifter:

- For safety reasons, the log lifter chain may only be hung on the splitting blade with the last link.
- Ensure that nobody else is within the working environment of the log lifter.

Operating the log lifter:

- Loosen the log lifter restraining hook so the lifting tube can move freely.
- Move the splitting blade so far down that the log lifter lifting tube lies on the ground.
- In this position, you can roll the log to be split onto the lifting tube. (The log has to be between the two fixing tips.)
- Push the return bracket down or the handles up so the splitting blade moves up. (Caution! Do not stand in the working environment of the log lifter! Risk of injury!)
- Then remove the split wood and move the riving knife and therefore the log lifter back down.
- Now you can roll a new log onto the log lifter.

Resetting the log lifter

This is used as a second guard arm when not using the trunk lifter or when automatic return is enabled. For this, the arm is moved up until it locks in position in the hook.

Transport position of the log lifter:

- Using your hand, move the log lifter up until it locks in position.
Comply with these notices to ensure quick and safe work.

Electrical connection

The electrical motor installed is connected and ready for operation. The connection complies with the applicable VDE and DIN provisions. The customer's mains connection, as well as the extension cable used, must also comply with these regulations.

- The product meets the requirements of EN 61000-3-11 and is subject to special connection conditions. This means that use of the product at any freely selectable connection point is not allowed.
- Given unfavorable conditions in the power supply the product can cause the voltage to fluctuate temporarily.
- The product is intended solely for use at connection points that
 - a) do not exceed a maximum permitted supply impedance "Z" ($Z_{\max} = 0,354 \, \Omega \text{ (230V)} / 1,043 \, \Omega \text{ (400V)}$), or
 - b) have a continuous current-carrying capacity of the mains of at least 100 A per phase.
- As the user, you are required to ensure, in consultation with your electric power company if necessary, that the connection point at which you wish to operate the product meets one of the two requirements,
 - a) or b), named above.

Damaged electrical connection cable

The insulation on electrical connection cables is often damaged.

This may have the following causes:

- Passage points, where connection cables are passed through windows or doors.
- Kinks where the connection cable has been improperly fastened or routed.
- Places where the connection cables have been cut due to being driven over.
- Insulation damage due to being ripped out of the wall outlet.

- Cracks due to the insulation aging.
Such damaged electrical connection cables must not be used and are life-threatening due to the insulation damage.
- Check the electrical connection cables for damage regularly. Make sure that the connection cable does not hang on the power network during the inspection. Electrical connection cables must comply with the applicable VDE and DIN provisions. Only use connection cables with the marking „H07RN“.
- The printing of the type designation on the connection cable is mandatory.

For single-phase AC motors, we recommend a fuse rating of 16A (C) or 16A (K) for machines with a high starting current (starting from 3000 watts)!

- AC motor 230 V~ / 50 Hz
- Mains voltage 230 V~ / 50 Hz.
Mains voltage and extension cables must be 3-lead = P + N + SL. – (1/N/PE).
Extension cables up to 25m long must have a minimum cross-section of 1.5 mm².
- Mains fuse protection is 16 A maximum.
- Three-phase motor 400 V~ / 50 Hz
- Mains voltage 400 V~ / 50 Hz
- Mains voltage and extension cables must be 5-lead (3P + N + SL (3/N/PE)).

Extension cables up to 25m long must have a minimum cross-section of 1.5 mm².

Mains fuse protection is 16 A maximum.

When connecting to the mains or relocating the machine, check the direction of rotation (swap polarity in the wall socket if necessary). Turn the pole inverter in the machine socket.

Cleaning

Attention!

Pull out the power plug before carrying out any cleaning work on the equipment.

We recommend that you clean the equipment immediately after you use it.

Clean the equipment regularly with a damp cloth and some soft soap. Do not use cleaning agents or solvents; these may be aggressive to the plastic parts in the equipment. Ensure that no water can get into the interior of the equipment.

Transport

Move the splitter to the transport position beforehand. See item 9.2, proceed in reverse order.

The log splitter is equipped with two transport wheels and an additional transport wheel. Use the transport handle (5) to move the splitter.

Storage

Store the device and its accessories in a dark, dry, and frost-proof place that is inaccessible to children. The optimum storage temperature is between 5 and 30°C.

Cover the electrical tool in order to protect it from dust and moisture.

Store the operating manual with the electrical tool.

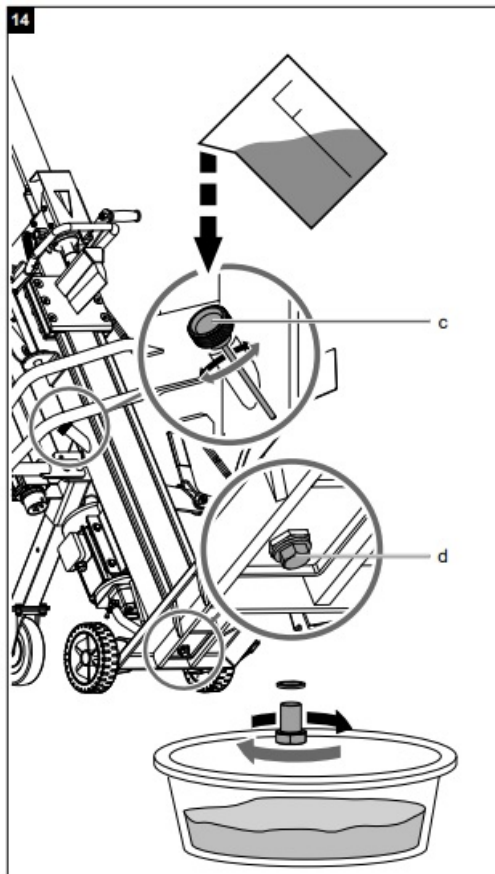
Maintenance

Attention!

Pull out the power plug before carrying out any maintenance work on the equipment. Make sure that the drive shaft is not connected to the traction unit.

When must the oil be changed?

First oil change after 50 operating hours, then every 250 operating hours.



Oil change (Fig. 14)

Bring the splitter to the transport position by tilting it onto the transport wheels. Place a sufficiently large container (at least 6 liters) under the drain plug on the splitting column.

Open the drain plug (d) and carefully let the oil run into the container. Open the filling screw (c) on the top of the splitting column so the oil can drain more easily. Replace the drain plug and its seal and tighten it.

Pour in fresh hydraulic oil (Contents: see Technical data) and check the oil level with the dipstick. After changing the oil, operate the kindling splitter a few times without actually splitting.

Warning! Ensure that no debris gets into the oil container. Dispose of the used oil in a correct manner at a public collection facility. It is prohibited to drop old oil on the ground or to mix it with waste.

We recommend oil from the HLP 32 range.

Hydraulic system

The hydraulic unit is a closed system with oil tank, oil pump and control valve.

The system is complete when the machine is delivered, and may not be changed or manipulated.

Check the oil level regularly

Too low an oil level can damage the oil pump. Check hydraulic connections and bolts for tightness and wear.

Retighten the bolts if necessary.

Connections and repairs

Connections and repairs of electrical equipment may only be carried out by an electrician.

Please provide the following information in the event of any inquiries:

- Type of current for the motor
- Machine data-type plate
- Motor data-type plate

Service information

Please note that the following parts of this product are subject to normal or natural wear and that the following parts are therefore also required for use as consumables.

Wear parts*: splitting wedge guides, hydraulic oil, splitting wedge

Not necessarily included in the scope of delivery!

Disposal and recycling

The equipment is supplied in packaging to prevent it from being damaged in transit. The raw materials in this packaging can be reused or recycled. The equipment and its accessories are made of various types of material, such as metal and plastic. Defective components must be disposed of as special waste. Ask your dealer or your local council.

Old devices must not be disposed of with household waste!

This symbol indicates that this product must not be disposed of together with domestic waste in compliance with the Directive (2012/19/EU) pertaining to waste electrical and electronic equipment (WEEE). This product must be disposed of at a designated collection point. This can occur, for example, by handing it in at an authorized collecting point for the recycling of waste electrical and electronic equipment. Improper handling of waste equipment may have negative consequences for the environment and human health due to potentially hazardous substances that are often contained in electrical and electronic equipment. By properly disposing of this product, you are also contributing to the effective use of natural resources. You can obtain information on collection points for waste equipment from your municipal administration, public waste disposal authority, an authorized body for the disposal of waste electrical and electronic equipment or your waste disposal company.

Troubleshooting

The table below contains a list of error symptoms and explains what you can do to solve the problem if your tool fails to work properly. If the problem persists after working through the list, please contact your nearest service workshop.

Malfunction	Possible cause	Remedy
	No electric power	Check cable for electric power
The hydraulic pump does not start	Thermal switch of motor cut off	Engage thermal switch inside the motor casing again
	Low oil level	Check oil level and refill
The column does not move down	One of the levers not connected	Check fixing of lever
	Dirt in the rails	Clean the column
Motor starts but column does not move down	Wrong turning direction of 3-phase motor	Check turning direction of motor and change

hereby declares the following conformity under the EU Directive and standards for the following article

Marke / Brand: SCHEPPACH

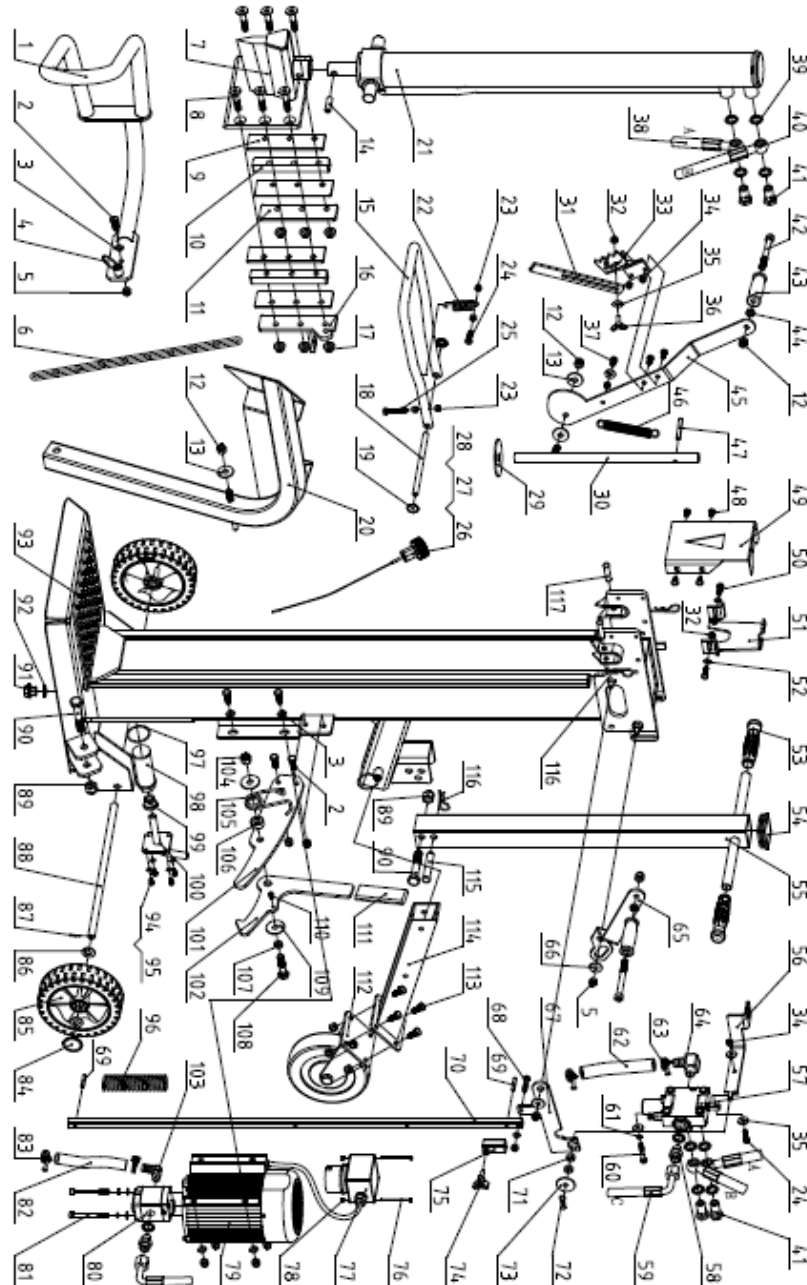
Art.-Bezeichnung / Article name: HOLZSPALTER – HL1050

LOG SPLITTER – HL1050

FENDEUR HYDRAULIQUE – HL1050

Art.-Nr. / Art. no.: 5905418901 /(230V) 5905418902 (400V)

The object of the declaration described above fulfills the regulations of the directive 2011/65/EU of the European Parliament and Council from 8th June 2011, on the restriction of the use of certain hazardous substances in electrical



and electronic equipment.

Warranty GB

Apparent defects must be notified within 8 days from the receipt of the goods. Otherwise, the buyer's rights of claim due to such defects are invalidated. We guarantee for our machines in case of proper treatment for the time of the statutory warranty period from delivery in such a way that we replace any machine part free of charge which provably becomes unusable due to faulty material or defects of fabrication within such period of time. With respect to parts not manufactured by us, we only warrant insofar as we are entitled to warranty claims against the upstream suppliers. The costs for the installation of the new parts shall be borne by the buyer. The cancellation of the sale or the reduction of the purchase price as well as any other claims for damages shall be excluded.

Documents / Resources



[scheppach HL1050 Log Splitter](#) [pdf] Instruction Manual
HL1050, Log Splitter, HL1050 Log Splitter



References

- [🔗 scheppach | scheppach](#)
- [🔗 Kontakt & Service | scheppach | scheppach](#)

Manuals+,

- [home](#)
- [privacy](#)