



## **scheppach HD12 Dust Extractor with Adapter Set Instruction Manual**

[Home](#) » [Scheppach](#) » **scheppach HD12 Dust Extractor with Adapter Set Instruction Manual** 



**HD12 Dust Extractor with Adapter Set  
Instruction Manual**

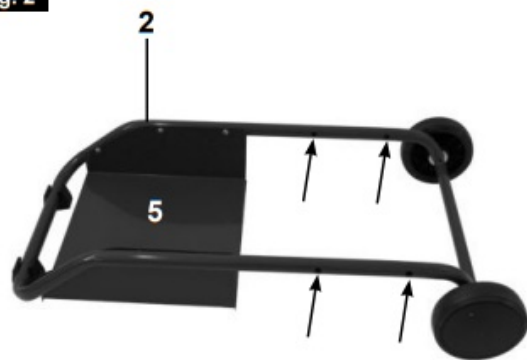


**Art.Nº 3906301915**  
**AusgabeNº 3906301851**  
**Rev.Nº 18/05/2017**

Fig. 1



**Fig. 2**



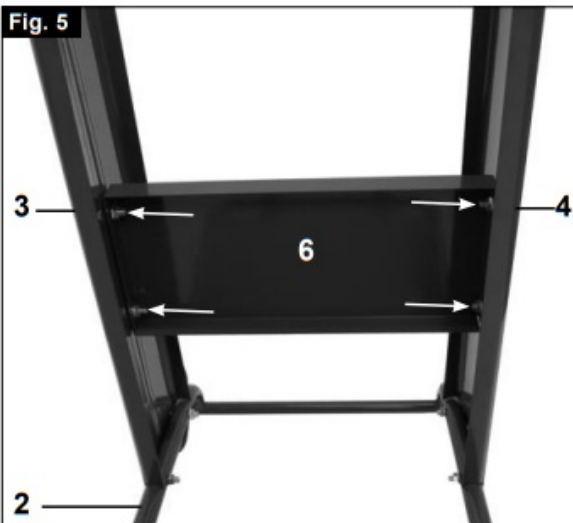
**Fig. 3**



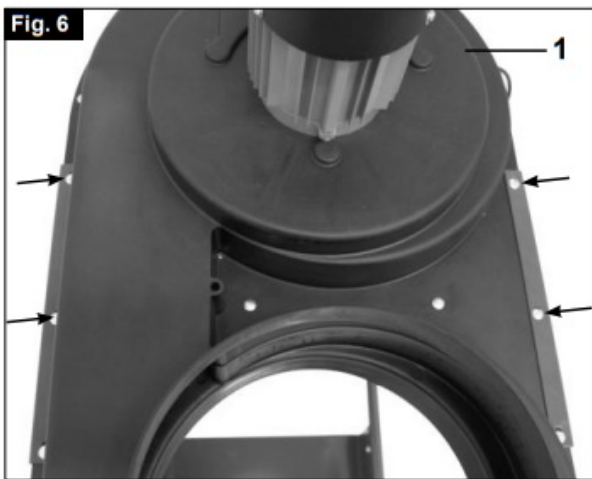
**Fig. 4**



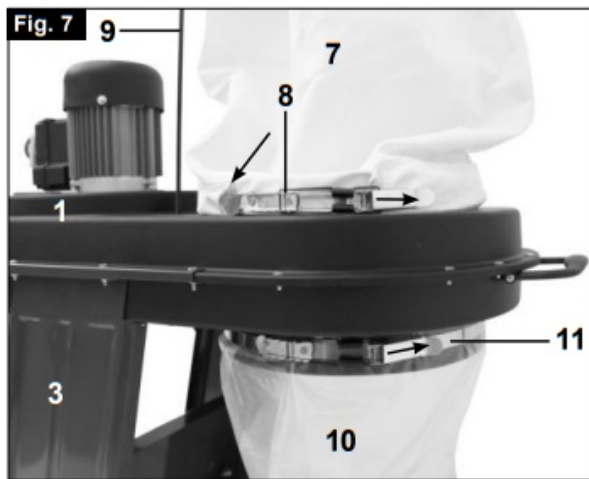
**Fig. 5**

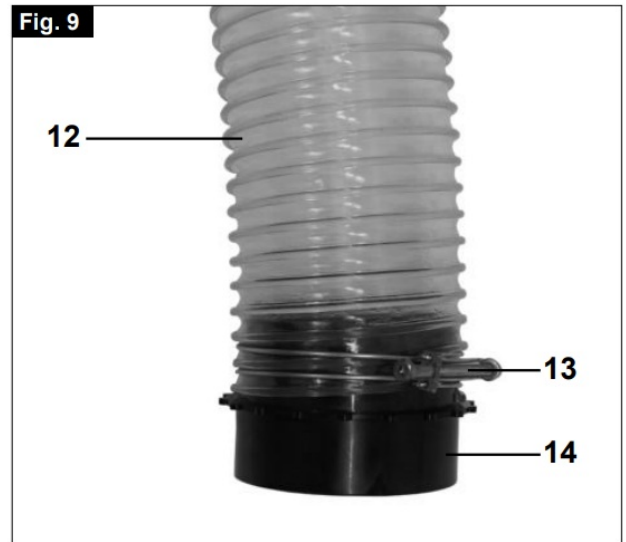
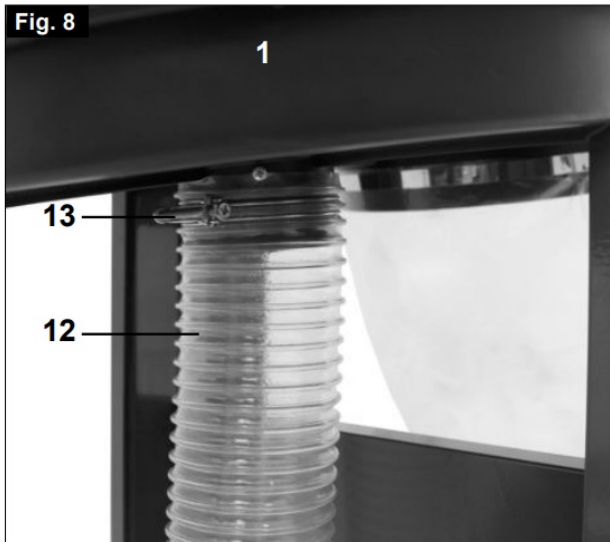


**Fig. 6**



**Fig. 7**





[www.scheppach.com](http://www.scheppach.com)  
[service@scheppach.com](mailto:service@scheppach.com)

+(49)-08223-4002-99

+(49)-08223-4002-58

### Explanation of the symbols on the equipment



Read the operating instructions to reduce the risk of injury



Wear safety goggles. Sparks generated during working or splinters, chips, and dust emitted by the device can cause loss of sight. Wear a breathing mask. Dust that is injurious to health can be generated when working on wood and other materials.



Never use the device to work on any materials containing asbestos!

### Contents

- 1 Introduction
- 2 Device description
- 3 Scope of delivery
- 4 Intended use
- 5 Safety information
- 6 Technical data
- 7 Assembly
- 8 Initial operation
- 9 Maintenance
- 10 Storage
- 11 Electrical connection
- 12 Disposal and recycling
- 13 Documents / Resources
  - 13.1 References
- 14 Related Posts

## Introduction

**Manufacturer:**

scheppach  
Fabrikation von Holzbearbeitungsmaschinen  
GmbH Günzburger Straße 69  
D-89335 Ichenhausen

**Dear customer,** we wish you a pleasant and successful working experience with your new scheppach Scroll machine.

**Note:**

According to the applicable product liability law the manufacturer of this device is not liable for damages that arise on or in connection with this device in case of

- improper handling
- non-compliance with the instructions for use
- repairs by the third party, nonauthorized skilled workers
- installation and replacement of non-original spare parts
- improper use
- failures of the electrical system due to the noncompliance with the electrical specifications and the VDE 0100, DIN 57113 / VDE 0113 regulations

**Recommendations:**

Read the entire text of the operating instructions prior to the assembly and operation of the device. These operating instructions are intended to make it easier for you to get familiar with your device and utilize its intended possibilities of use.

The operating instructions contain important notes on how to work safely, properly, and economically with your machine and how to avoid dangers, save repair costs, reduce downtime, and increase the reliability and working life of the machine.

In addition to the safety regulations contained herein, you must in any case comply with the applicable regulations of your country with respect to the operation of the machine. Put the operating instructions in a clear plastic folder to protect them from dirt and humidity, and store them near the machine.

The instructions must be read and carefully observed by each operator prior to starting the work. Only persons who have been trained in the use of the machine and have been informed on the related dangers and risks are allowed to use the machine. The required minimum age must be met.

In addition to the safety notes contained in the present operating instructions and the special regulations of your country, the generally recognized technical rules for the operation of woodworking machines must be observed.

**Device description****(Fig. 1)**

1. Housing complete with motor
2. Undercarriage with wheels
3. Side covering left
4. Side covering, right
5. Base plate
6. Cross-member
7. Filter bag
8. Upper clamp
9. Support bar
10. Shavings bag

11. Lower clamp
12. Exhaust hose
13. Clamp 2x
14. Hose coupling
15. . Accessory kit
16. Operating instructions

## **Scope of delivery**

- When you unpack the device, check all parts for possible transport damages. In case of complaints, the supplier is to be informed immediately.
- Complaints received at a later date will not be acknowledged.
- Check the delivery for completeness.
- Read the operating instructions to make yourself familiar with the device prior to using it.
- Only use original scheppach parts for accessories as well as for wearing and spare parts. Spare parts are available from your specialized dealer.
- Specify our part numbers as well as the type and year of construction of the device in your orders.

## **Attention**

The device and packaging materials are not toys! Children must not be allowed to play with plastic bags, film, and small parts! There is a risk of swallowing and suffocation!

## **Intended use**

CE-tested machines meet all valid EC machine guidelines as well as all relevant guidelines for each machine.

- The machine has been built in accordance with state-of-the-art standards and recognized safety rules. Nevertheless, its use may constitute a risk to the life and limb of the user or of third parties, or cause damage to the machine and to other materials property.
- The machine must only be used in technically perfect condition in accordance with its designated use and the instructions set out in the operating manual, and only by safety-conscious persons who are fully aware of the risks involved in operating the machine.
- Any functional disorders, especially those affecting the safety of the machine, should therefore be rectified immediately. The vacuum exhaust unit is designed only for removing saw dust (nor for normal dust)
- Regularly inspect the filter for damage.
- Replace damaged filters!
- Regularly check that the housing is well sealed and regularly inspect the filter and saw dust sack seals.
- Do not allow foreign objects such as screws, nails, plastic, or wood chips to enter the cleaning nozzle.
- The machine must only be used with original parts and original accessories supplied by the manufacturer.
- The Exhaust System is constructed exclusively for exhaust-vacuuming wood chips and sawdust and may only be used in connection with wood processing machines.
- When vacuuming shop floors, wood or metal pieces may not be vacuumed.
- Any other use exceeds authorization. The manufacturer is not responsible for any damages resulting from unauthorized use; risk is the sole responsibility of the operator.
- The safety, work, and maintenance instructions of the manufacturer as well as the technical data given in the

calibrations and dimensions must be adhered to.

- Relevant accident prevention regulations and other, generally recognized safety-technical rules must also be adhered to.
- The machine may only be used, maintained, and operated by persons familiar with and instructed in its operating and procedures. Arbitrary alterations to the machine release the manufacturer from all responsibility for any resulting damages.
- The machine may only be used with original accessories made by the manufacturer.

Please note that our equipment has not been designed for use in commercial, trade or industrial applications. Our warranty will be voided if the equipment is used in commercial, trade, or industrial businesses or for equivalent purposes

## Safety information

Attention! The following basic safety measures must be observed when using electric tools for protection against electric shock, and the risk of injury and fire. Read all these notices before using the electric tool and keep the safety instructions for later reference.

### Safety information

- **Warning:** When using electric tools it is imperative to take the following basic safety precautions in order to reduce the risk of electric shock, injury and fire.
- Take due note of all this information before and while working with the machine.
- Do not lose these safety regulations.
- Guard against electric shock Avoid body contact with earthed parts.
- When equipment is not being used it should be kept in a dry, closed place out of children's reach.
- Keep mounted attachments sharp and clean to enable you to work well and safely.
- Check the power cable regularly and have it replaced by an authorized specialist at the first sign of any damage.
- Check your extension cables regularly and replace them if damaged.
- When working outdoors, use only extension cables that are approved for outdoor use and which are marked accordingly.
- Concentrate on what you are doing. Use common sense. Do not operate the tool if your mind is not on your work.
- Never use an electric tool with a switch that cannot be turned on and off. Warning! The use of plugin tools and accessories other than those intended may put you at risk of injury.
- Always pull the plug out of the power socket before adjusting or servicing the machine.
- Give these safety regulations to all persons who work on the machine.
- Before you use the machine for the first time, check that the voltage marked on the rating plate is the same as your mains voltage.
- If you need to use an extension cable, make sure its conductor cross-section is big enough for the equipment power consumption. Minimum crosssection: 1.5 mm<sup>2</sup>.
- If you use a cable reel, the complete cable has to be pulled off the reel. Check the power cable. Never use a faulty or damaged power cable.
- Do not use the cable to pull the plug out of the socket.
- Protect the cable from heat, oil, and sharp edges.



- Do not leave the machine in the rain and never use it in damp or wet conditions.
- Provide good lighting.
- Do not see near flammable liquids or gases.
- Non-slip shoes are recommended when working outdoors. Wear a hair net if you have long hair.
- Avoid abnormal working postures.
- Operators have to be at least 18 years of age. Trainees of at least 16 years of age are allowed to use the machine under supervision.
- Keep children away from the machine when it is connected to the power supply.
- Keep your workplace clean of wood scrap and any unnecessary objects. An untidy work area invites accidents.
- Do not allow other persons, especially children, to touch the tool or cable. Keep them out of your work area.
- Persons working on the machine should not be distracted.
- Carry out conversions, adjustments, measurements, and cleaning jobs only when the motor is switched off. – Pull out the power plug!
- Before switching on, make sure that all keys and wrenches have been removed from the tool. · Switch off the motor and pull out the power plug before you leave the workplace.
- Refit all guards and safety devices immediately after you have completed any repairs or maintenance work.
- Be sure to observe the safety information and operating and maintenance instructions issued by the manufacturer, as well as the dimensions listed in the Technical Data.
- It is imperative to observe the accident prevention regulations in force in your area as well as all other generally recognized rules of safety.
- Note the information published by your professional associations.
- Do not use any low-powered machines for heavy-duty work.
- Do not misuse the cable
- Make sure you stand squarely and keep your balance at all times.
- Check that the moving parts are in good working order, that they do not jam, and that no parts are damaged. Make sure that all parts are fitted correctly and that all other operating conditions are properly fulfilled.
- Unless otherwise stated in the operating instructions, damaged safety devices, and parts have to be repaired or replaced by an authorized service center.
- Have damaged switches replaced by a customer service workshop.
- This electric tool complies with the pertinent safety regulations. Repairs are to be carried out only by a qualified electrician using original replacement parts or the user may suffer an accident.
- If necessary, wear suitable personal protection equipment. This could consist of: – Ear-muffs to prevent the risk of damaging your hearing – A breathing mask to prevent the risk of inhaling hazardous dust
- The operator has to be informed about the conditions an influence noise development.
- Faults on the machine have to be reported to the person in charge as soon as they are discovered.
- This appliance is not suitable for the collection of dangerous dust.
- This equipment is not designed to be used by people (including children) with limited physical, sensory, or mental capacities or those with no experience and/or knowledge unless they are supervised by a person who is responsible for their safety or they have received instructions from such a person in how to use the equipment safely. Children must always be supervised in order to ensure that they do not play with the equipment.

### **Remaining hazards**

The machine has been built using modern technology in accordance with recognized safety rules. Some

remaining hazards, however, may still exist.

- Wood chips and sawdust can be health hazards. Be sure to wear personal protective gear such as safety goggles and a dust mask.
- Dust inhalation may occur when closing and replacing the dust bag.
- Please note the instructions concerning proper disposal in the operating manual (e.g. the use of P2 dust masks) to prevent dust inhalation.
- Noise can be a health hazard. The permitted noise level is exceeded when working. Be sure to wear personal protective gear such as ear protection.
- The use of incorrect or damaged mains cables can lead to injuries caused by electricity.
- Even when all safety measures are taken, some remaining hazards which are not yet evident may still be present.
- The remaining hazards can be minimized by following the instructions in "Safety Precautions", "Proper Use" and in the entire operating manual. Keep this safety information in a safe place.

## Technical data

Technical Data Dimensions L x W x H (mm): Overall height with filter bag mm Extractor duct connections  $\varnothing$  mm  
Hose length mm Wheel diameter mm Approx. weight kg Rate of air flow m<sup>3</sup>/h Pressure differential Pa Filter area  
(filter bag) m<sup>2</sup>

Dimensions LxWx H (mm):	870 x 500 x 1500
Overall height with filter bag mm	1500
Extractor duct connections Ø mm	100
Hose length mm	2000
Wheel Diameter mm	150
Approx. weight kg	20
Rate of air flow m <sup>3</sup> /h	1150
Pressure differential Pa	1000
Filter area (filter bag) m <sup>2</sup>	ca 1
Sawdust bag capacity liters	501
Performance	
Electric motor	230-240V/50 Hz
Nominal input P <sub>1</sub> (S <sub>1</sub> )	0,55 kW
Output power P <sub>2</sub> (S <sub>1</sub> )	0,34 kW
Motorspeed 1/min.	2850

**LPA= 75,5 dB(A) LWA= 95,5 dB(A) (EN 60335-2)**

Subject to technical modifications!

## Assembly

For packaging reasons, your machine is delivered in a semi-assembled state.

- Attach the side covering loosely to the base frame using flat-head screws M8 x 40 mm and screw nuts. Do not tighten completely. Fig. 2, 3
- Attach the cross-member to the side covering the left and right with flat-head screws M 8 x 12 and screw nuts. Fig. 4, 5
- Remove all screws and nuts from the housing.
- Attach the housing to the side coverings using flathead screws M5 x 20 and screw nuts. Securely tighten all nuts. Fig. 6
- Slide the clamp through the tabs on the filter bag and fix the filter bag on the container. Fig. 7
- Position the support bar into the housing and hang the filter bag from it. Fig. 1
- Attach the shavings bag to the lower air ventilator using the clamp. Fig. 7

- Attach the exhaust hose to the nozzle on the housing and affix it with a hose clamp. Fig. 8
- Attach the hose coupling to the other end of the hose using a hose clamp. Fig. 9

The exhaust system should be cleaned every time the shavings bag is changed. Damaged filters and bags must be immediately changed in order to keep the amount of dust that escapes into the work environment as low as possible.

## Initial operation

Note safety instructions before operation. The data on the motor type plate (voltage and frequency) must conform to the mains supply voltage and frequency. After connection to the mains, the Dust Extractor is ready for operation.

## Maintenance

For all maintenance and cleaning tasks, turn off the motor and unplug the mains.

- Connection and repair work on the electrical installation may be carried out by a qualified electrician only.
- For constant performance, periodically shake out the filter bag vigorously. Between cleanings, beating the bag with the hand several times is sufficient.
- The sawdust bag must be replaced at the latest when the sawdust is within 10 cm. of the housing collar.

## Special accessories

Filter bag U/S/G “.....Part no. 3906301013

Filter cartridge U/S/G..... Part no. 7500 6000

## Storage

Store the device and its accessories in a dark, dry, and frost-proof place that is inaccessible to children. The optimum storage temperature is between 5 and 30°C. Store the electrical tool in its original packaging.

## Electrical connection

Connection and repair work on the electrical equipment must be carried out by a qualified technician only.

The installed electric motor is factory connected and ready for operation.

The connection made by the customer as well as any extension cables used must comply with all relevant regulations.

## Important note

Defective electrical connection cables If the power cable is damaged, it must be replaced by the manufacturer, its customer service or a similarly qualified person to avoid hazards.

Electrical connection cables often suffer isolation damage.

### Possible causes are:

- Pinch points when connection cables are run through the window or door gaps.
- Kinks resulting from the incorrect attachment or laying of the connection cable.
- Cuts resulting from running over the connection cable.
- Isolation damage resulting from forcefully pulling out of the wall socket.

Such defective electrical connection cables must not be used as the isolation damage makes them extremely hazardous. Check electrical connection cables regularly for damage. Make sure the cable is disconnected from the mains when checking. Electrical connection cables must comply with the regulations applicable in your country.

### **One phase motor**

- The mains voltage must comply with the specifications on the motor nameplate.
- Extension cables must have a cross-section of at least 1.0 sqm.
- The mains is protected by a 16 A slow blow fuse.

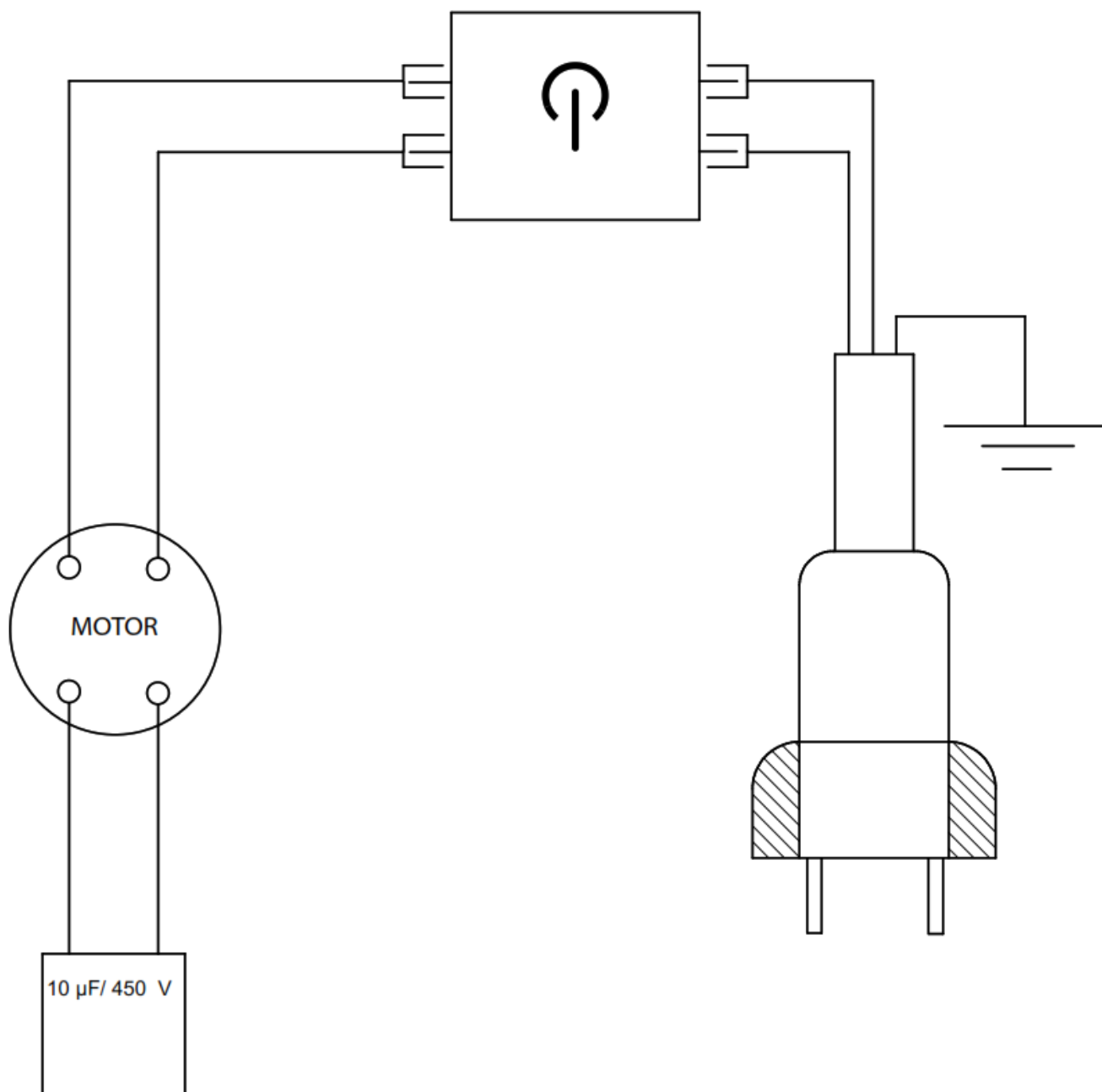
### **When making inquiries please specify the following:**

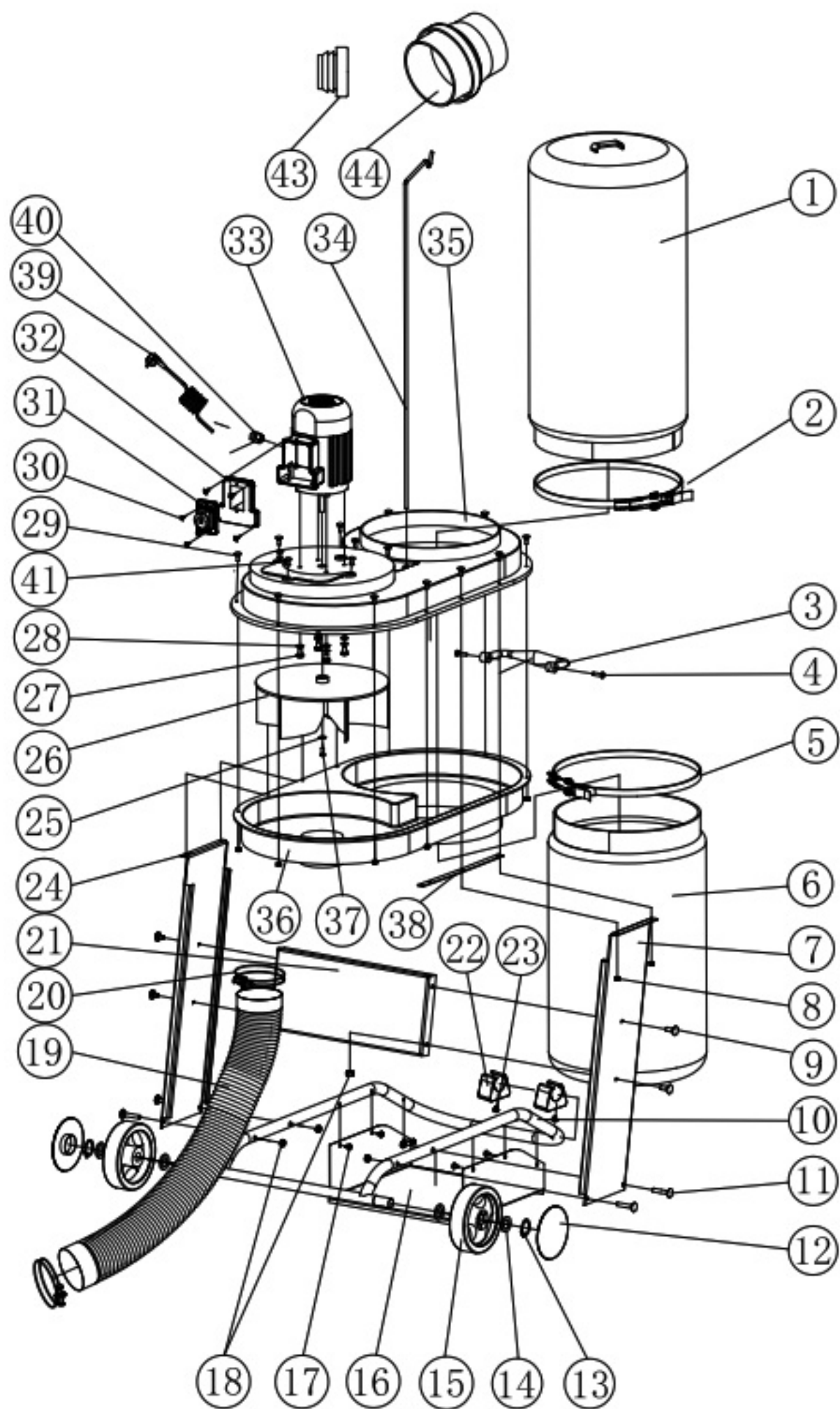
- Motor manufacturer
- Motor current type
- Motor nameplate specifications
- Switch nameplate specifications

When sending the motor in, always send the complete drive unit including the switch.

### **Disposal and recycling**

The equipment is supplied in packaging to prevent it from being damaged in transit. The raw materials in this packaging can be reused or recycled. Never place batteries in your household refuse, in fire or in water. Batteries should be collected, recycled or disposed of by environment-friendly means. The equipment and its accessories are made of various types of material, such as metal and plastic. Defective components must be disposed of as special waste. Ask your dealer or your local council.





Only for EU countries.



Do not dispose of electric tools together with household waste material! In observance of European directive 2012/19/EU on waste electrical and electronic equipment and its implementation in accordance with national law, electric tools that have reached the end of their life must be collected separately and returned to an environmentally compatible recycling facility.



Hereby declares the following conformity under the EU Directive and standards for the following article

<input type="checkbox"/> 2014/29/EU	<input type="checkbox"/> 89/686/EC_96/58/EC
<input type="checkbox"/> 2014/35/EU	<input checked="" type="checkbox"/> 2006/42/EC
<input type="checkbox"/> 2006/28/EC	<b>Annex IV</b> Notified Body: Notified Body No.: Reg. No.:
<input type="checkbox"/> 2005/32/EC	<input type="checkbox"/> 2000/14/EC_2005/88/EC
<input checked="" type="checkbox"/> 2014/30/EU	<b>Annex V</b>
<input type="checkbox"/> 2004/22/EC	<b>Annex VI</b> Noise: measured $L_{WA}$ = xx dB(A); guaranteed $L_{WA}$ = xx dB(A) Notified Body:
<input type="checkbox"/> 1999/5/EC	<input type="checkbox"/> 2004/26/EC
<input type="checkbox"/> 2014/68/EU	Emission. No:
<input type="checkbox"/> 90/396/EC	
<input checked="" type="checkbox"/> 2011/65/EU	
<b>Standard references: EN 62233; EN 60335-1; EN 60335-2; EN 55014-1; EN 55014-2; EN 61000-3-2; EN 61000-3-3;</b>	
Ichenhausen, den 18.05.2016	 Unterschrift / Markus Bindhammer / Technical Director
<b>Art.-No.: 3906301915</b> <b>Subject to change without notice</b>	<b>Documents registrar: Christian Wilhelm</b> Günzburger Str. 69, D-89335 Ichenhausen

### Warranty

Apparent defects must be notified within 8 days from the receipt of the goods. Otherwise, the buyer's rights of claim due to such defects are invalidated. We guarantee for our machines in case of proper treatment for the time of the statutory warranty period from delivery in such a way that we replace any machine part free of charge which provably becomes unusable due to faulty material or defects of fabrication within such period of time. With respect to parts not manufactured by us we only warrant insofar as we are entitled to warranty claims against the upstream suppliers. The costs for the installation of the new parts shall be borne by the buyer. The cancellation of sale or the reduction of the purchase price as well as any other claims for damages shall be excluded.

### **schepbach Fabrikation von Holzbearbeitungsmaschinen GmbH**

Günzburger Str. 69 |  
D-89335 Ichenhausen

[www.schepbach.com](http://www.schepbach.com)

[www.schepbach.com](http://www.schepbach.com)

[service@schepbach.com](mailto:service@schepbach.com)

+(49)-08223-4002-99

+(49)-08223-4002-58





[scheppach HD12 Dust Extractor with Adapter Set](#) [pdf] Instruction Manual  
HD12, Dust Extractor with Adapter Set, Dust Extractor, HD12, Extractor

## References

- [scheppach | scheppach](#)

Manuals+