



## scheppach HC52DC Air Compressor Instruction Manual

[Home](#) » [Scheppach](#) » scheppach HC52DC Air Compressor Instruction Manual 

### scheppach HC52DC Air Compressor Instruction Manual



#### **Only for EU countries.**

Do not dispose of electric tools together with household waste material! In observance of European directive 2012/19/EU on wasted electrical and electronic equipment and its implementation in accordance with national law, electric tools that have reached the end of their life must be collected separately and returned to an environmentally compatible recycling facility.

- Read and follow the operating and safety instructions before you start working with this power tool.



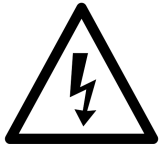
- Wear safety goggles!



- Beware of hot parts!



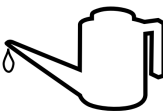
- Beware of electrical voltage!



- **Warning!** The equipment is remote-controlled and may start-up without warning.



- **Caution!** Before using for the first time, check the oil level and replace the oil sealing plug!



## Contents

- 1 Introduction
- 2 Device description (Fig. 1-4)
- 3 Scope of delivery
- 4 Intended use
- 5 Safety information
  - 5.1 ADDITIONAL SAFETY INSTRUCTIONS
- 6 Technical data
- 7 Before starting the equipment
- 8 Attachment and operation
- 9 Electrical connection
- 10 Cleaning, maintenance, and storage
  - 10.1 Cleaning
  - 10.2 Storage
- 11 Disposal and recycling
- 12 Troubleshooting
- 13 Exploded Parts
- 14 Warranty
- 15 Documents / Resources
  - 15.1 References
- 16 Related Posts

## Introduction

**MANUFACTURER:**

scheppach  
Fabrikation von Holzbearbeitungsmaschine GmbH  
Günzburger Straße 69  
D-89335 Ichenhausen

**DEAR CUSTOMER,**

we hope your new tool brings you much enjoyment and success.

**NOTE:**

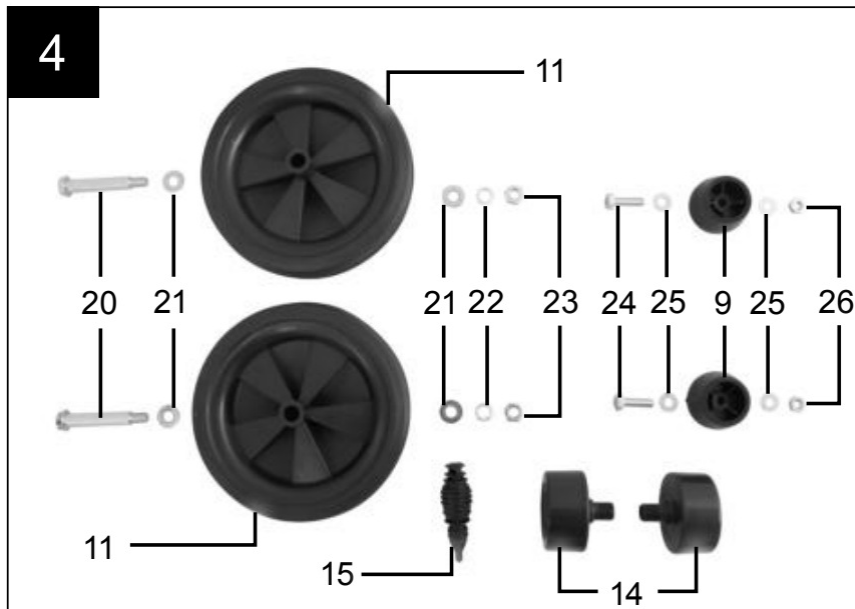
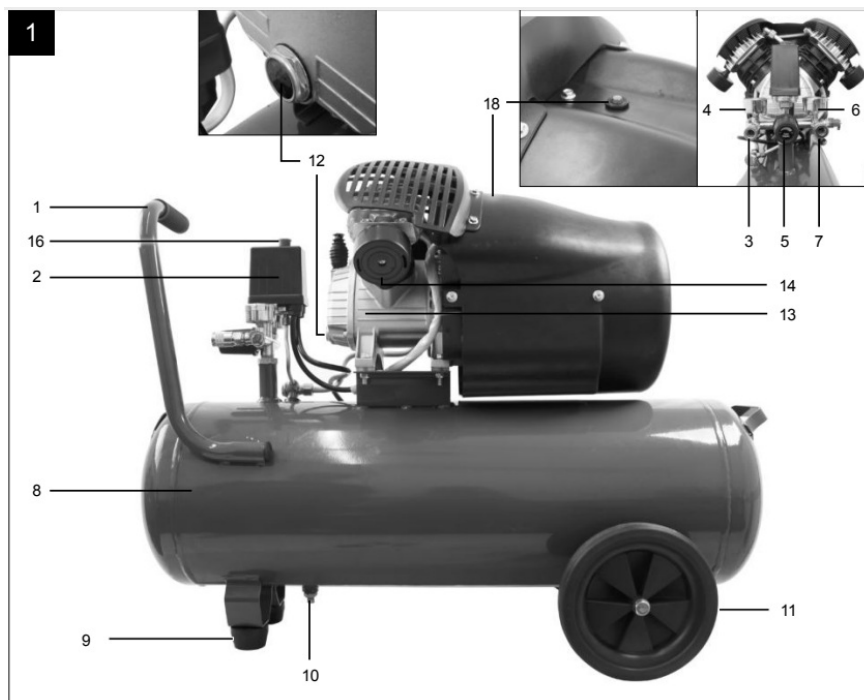
According to the applicable product liability laws, the manufacturer of the device does not assume liability for damages to the product or damages caused by the product that occurs due to:

- Improper handling,
- Non-compliance of the operating instructions,
- Repairs by third parties, not by authorized service technicians,
- Installation and replacement of non-original spare parts,
- Application other than specified,
- A breakdown of the electrical system that occurs due to the non compliance of the electric regulations and local regulations.

**We recommend:**

Read through the complete text in the operating instructions before installing and commissioning the device. The operating instructions are intended to help the user to become familiar with the machine and take advantage of its application possibilities in accordance with the recommendations. The operating instructions contain important information on how to operate the machine safely, professionally and economically, how to avoid danger, costly repairs, reduce downtimes and how to increase reliability and service life of the machine. In addition to the safety regulations in the operating instructions, you have to meet the applicable regulations that apply for the operation of the machine in your country. Keep the operating instructions package with the machine at all times and store it in a plastic cover to protect it from dirt and moisture. Read the instruction manual each time before operating the machine and carefully follow its information. The machine can only be operated by persons who were instructed concerning the operation of the machine and who are informed about the associated dangers. The minimum age requirement must be complied with.

**Device description (Fig. 1-4)**



1. Transport handle
2. Pressure switch
3. Quick-lock coupling (regulated compressed air)
4. Pressure gauge (for reading the preset vessel pressure)
5. Pressure regulator
6. Pressure gauge (for reading the vessel pressure)
7. Quick-lock coupling (unregulated compressed air)
8. Pressure vessel
9. Supporting foot (2x)
10. Drain plug for condensation water
11. Wheel (2x)
12. Oil drain plug/ Oil- level window
13. Compressor pump
14. Air filter

15. Oil sealing plug
16. ON/OFF switch
17. Safety valve
18. Overload switch
19. Oil filler opening
20. Screw (Wheel)
21. Washer (Wheel)
22. Spring washer (Wheel)
23. Nut (Wheel)
24. Screw (Supporting foot)
25. Washer (Supporting foot)
26. Nut (Supporting foot)

## **Scope of delivery**

1. 2x Air filter
2. 2x Supporting foot
3. 2x Wheel
4. 1x Mounting material
5. 1x Oil sealing plug
6. 1x Translation of Original Operating Manual

- Open the packaging and remove the device carefully.
- Remove the packaging material as well as the packaging and transport bracing (if available).
- Check that the delivery is complete.
- Check the device and accessory parts for transport damage.
- If possible, store the packaging until the warranty period has expired.

## **ATTENTION**

The device and packaging materials are not toys! Children must not be allowed to play with plastic bags, film and small parts! There is a risk of swallowing and suffocation!

## **Intended use**

The compressor is designed to generate compressed air for compressed-air driven tools which can be driven with an air volume of up to approx. 272 l/min (e.g. tire inflator, blow-out pistol and paint spray gun). Due to the limited air output it is not possible to use the compressor to drive tools with very high air consumption (for example orbital sanders, die grinders and hammer screwdrivers).

The equipment is to be used only for its prescribed purpose. Any other use is deemed to be a case of misuse. The user / operator and not the manufacturer will be liable for any damage or injuries of any kind caused as a result of this.

Please note that our equipment has not been designed for use in commercial, trade or industrial applications. Our warranty will be voided if the equipment is used in commercial, trade or industrial businesses or for equivalent purposes.

## Safety information



**Attention!** The following basic safety measures must be observed when using electric tools for protection against electric shock, and the risk of injury and fire. Read all these notices before using the electric tool and keep the safety instructions for later reference.



**Attention!** The following basic safety actions must be taken when using this compressor in order to protect the user from electric shocks and the risk of injury and fire. Read and follow these instructions before using the equipment.

### Safe work

1. Keep the work area orderly
  - Disorder in the work area can lead to accidents.
2. Take environmental influences into account
  - Do not expose electric tools to rain.
  - Do not use electric tools in a damp or wet environment. There is a risk of electric shock!
  - Make sure that the work area is well-illuminated.
  - Do not use electric tools where there is a risk of fire or explosion.
3. Protect yourself from electric shock
  - Avoid physical contact with earthed parts (e.g. pipes, radiators, electric ranges, cooling units).
4. Keep children away
  - Do not allow other persons to touch the equipment or cable, keep them away from your work area.
5. Securely store unused electric tools
  - Unused electric tools should be stored in a dry, elevated or closed location out of the reach of children.
6. Do not overload your electric tool
  - They work better and more safely in the specified output range.
7. Wear suitable clothing
  - Do not wear wide clothing or jewellery, which can become entangled in moving parts.
  - Rubber gloves and non-slip shoes are recommended when working outdoors.
  - Tie long hair back in a hair net.
8. Do not use the cable for purposes for which it is not intended
  - Do not use the cable to pull the plug out of the outlet. Protect the cable from heat, oil and sharp edges.
9. Take care of your tools
  - Keep your compressor clean in order to work well and safely.
  - Follow the maintenance instructions.
  - Check the connection cable of the electric tool regularly and have it replaced by a recognised specialist when damaged.
  - Check extension cables regularly and replace them when damaged.
10. Pull the plug out of the outlet
  1. During non-use of the electric tool or prior to maintenance and when replacing tools such as saw blades, bits, milling heads.
11. Avoid inadvertent starting
  - Make sure that the switch is switched off when plugging the plug into an outlet.

12. Use extension cables for outdoors

- Only use approved and appropriately identified extension cables for use outdoors.
- Only use cable reels in the unrolled state.

13. Remain attentive

- Pay attention to what you are doing. Remain sensible when working. Do not use the electric tool when you are distracted.

14. Check the electric tool for potential damage

- Protective devices and other parts must be carefully inspected to ensure that they are fault-free and function as intended prior to continued use of the electric tool.
- Check whether the moving parts function faultlessly and do not jam or whether parts are damaged. All parts must be correctly mounted and all conditions must be fulfilled to ensure fault-free operation of the electric tool.
- Damaged protective devices and parts must be properly repaired or replaced by a recognised workshop, insofar as nothing different is specified in the operating manual.
- Damaged switches must be replaced at a customer service workshop.
- Do not use any faulty or damaged connection cables.
- Do not use any electric tool on which the switch cannot be switched on and off.

15. Have your electric tool repaired by a qualified electrician

- This electric tool conforms to the applicable safety regulations. Repairs may only be performed by an electrician using original spare parts. Otherwise accidents can occur.

16. Important!

- For your own safety you must only use the accessories and additional units listed in the operating instructions or recommended or specified by the manufacturer. The use of mounted tools or accessories other than those recommended in the operating instructions or catalogue may place your personal safety at risk.

17. Noise

- Wear ear muffs when you use the compressor.

18. Replacing the power cable

- To prevent hazards, leave the replacement of damaged power cables strictly to the manufacturer or a qualified electrician. There is a risk of electric shock!

19. Inflating tires

- Directly after inflating tires, check the pressure with a suitable pressure gauge, for example at your filling station.

20. Roadworthy compressors for building site operations

- Make sure that all lines and fittings are suitable for the maximum permissible operating pressure of the compressor.

21. Place of installation

- Set up the compressor on an even surface.

22. Supply hoses at pressures above 7 bar should be equipped with a safety cable (e.g. a wire rope).

**Warning!** This electric tool generates an electromagnetic field during operation. This field can impair active or passive medical implants under certain conditions. In order to prevent the risk of serious or deadly injuries, we recommend that persons with medical implants consult with their physician and the manufacturer of the medical implant prior to operating the electric tool.

## **ADDITIONAL SAFETY INSTRUCTIONS**

### **Safety instructions for working with compressed air and blasting guns**

- The compressor pump and lines can become very hot during operation. Touching these parts will burn you.
- The air which is sucked in by the compressor must be kept free of impurities that could cause fires or explosions in the compressor pump.
- When releasing the hose coupling, hold the hose coupling piece with your hand. This way, you can protect yourself against injury from the rebounding hose.
- Wear safety goggles when working with the blow-out pistol. Foreign bodies or blown off parts can easily cause injuries.
- Do not blow at people with the blow-out pistol and do not clean clothes while being worn. Risk of injury!

### **Safety information for paint spraying**

- Do not process any paints or solvents with a flash point below 55° C. There is a risk of explosion!
- Do not heat up paints or solvents. There is a risk of explosion!
- If hazardous liquids are processed, wear protective filter units (face guards). Also, adhere to the safety information provided by the manufacturers of such liquids.
- The details and designations of the Ordinance on Hazardous Substances, which are displayed on the outer packaging of the processed material, must be observed.
- Additional protective measures are to be undertaken if necessary, particularly the wearing of suitable clothing and masks.
- Do not smoke during the spraying process and/or in the work area. There is a risk of explosion! Paint vapors are easily combustible.
- Never set up or operate the equipment in the vicinity of a fire place, open lights or sparking machines.
- Do not store or eat food and drink in the work area. Paint vapors are harmful to your health.
- The work area must exceed 30 m<sup>3</sup> and sufficient ventilation must be ensured during spraying and drying. Do not spray against the wind. Always adhere to the regulations of the local police authority when spraying combustible or hazardous materials.
- Do not process media such as white spirit, butyl alcohol and methylene chloride with the PVC pressure hose. These media will destroy the pressure hose.

### **Operating pressure vessels**

- You must keep your pressure vessel in good working order, operate the vessel correctly, monitor the vessel, carry out necessary maintenance and repair work immediately and meet the relevant safety precautions.
- The supervisory authority may enforce essential control measures in individual cases.
- A pressure vessel is not allowed to be used if it has faults or deficiencies that can endanger workers or third parties.
- Check the pressure vessel for signs of rust and damage each time before using. Do not use the compressor with a damaged or rusty pressure vessel. If you discover any damage, then please contact the customer service workshop.



**Do not lose these safety instructions**

## Technical data

|                                      |                        |
|--------------------------------------|------------------------|
| Mains connection                     | 230 V — 50 Hz          |
| Motor rating W                       | 2200                   |
| Operating mode                       | Si                     |
| Compressor speed                     | 2850 min <sup>-1</sup> |
| Pressure vessel capacity (in liters) | 50                     |
| Operating pressure                   | approx. 8 bar          |
| Theoretical intake capacity (l/min)  | approx. 412            |
| sound power level L <sub>WA</sub>    | 97 dB(A)               |
| uncertainty K <sub>WA</sub>          | 2.03 dB                |
| Protection type                      | IP20                   |
| Weight of the unit in kg             | approx. 52.7           |
| Oil (15W 40) l                       | approx. 0,25           |
| Max. altitude (above mean sea level) | 1000 m                 |

**The noise emission values were measured in accordance with EN ISO 3744.**

### **Wear hearing protection.**

The effects of noise can cause a loss of hearing.

## Before starting the equipment

- Before you connect the equipment to the mains supply make sure that the data on the rating plate are identical to the mains data.
- Check the equipment for damage which may have occurred in transit. Report any damage immediately to the

transport company which was used to deliver the compressor.

- Install the compressor near the point of consumption.
- Avoid long air lines and supply lines (extension cables).
- Make sure that the intake air is dry and dustfree.
- Do not install the compressor in a damp or wet room.
- The compressor may only be used in suitable rooms (with good ventilation and an ambient temperature from +5 °C to 40 °C). There must be no dust, acids, vapors, explosive gases or inflammable gases in the room.
- The compressor is designed to be used in dry rooms. It is prohibited to use the compressor in areas where work is conducted with sprayed water.
- The oil level in the compressor pump has to be checked before putting the equipment into operation.

## Attachment and operation

### Important!

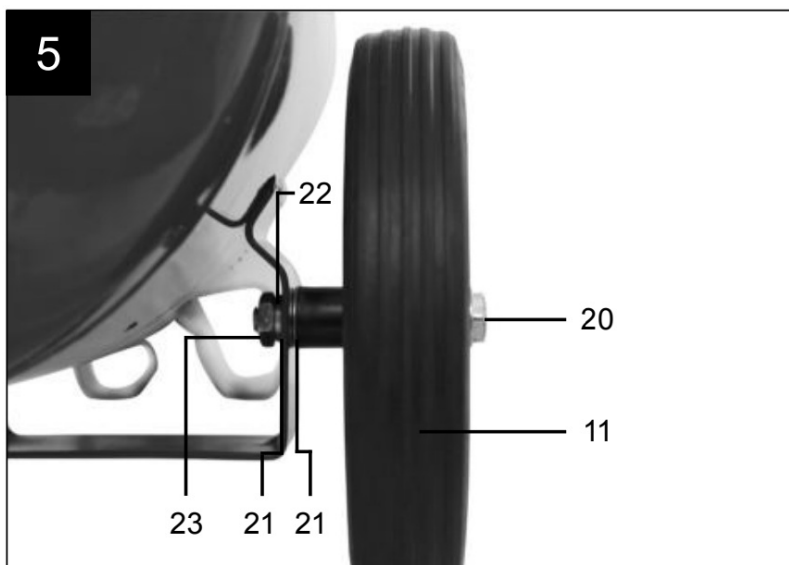
You must fully assemble the appliance before using it for the first time!

You will require the following tools for assembly and installation: 2 x open ended wrench size 19 mm (not included)

You will require the following tools for assembly and installation: 2 x open ended wrench size 14 mm (not included)

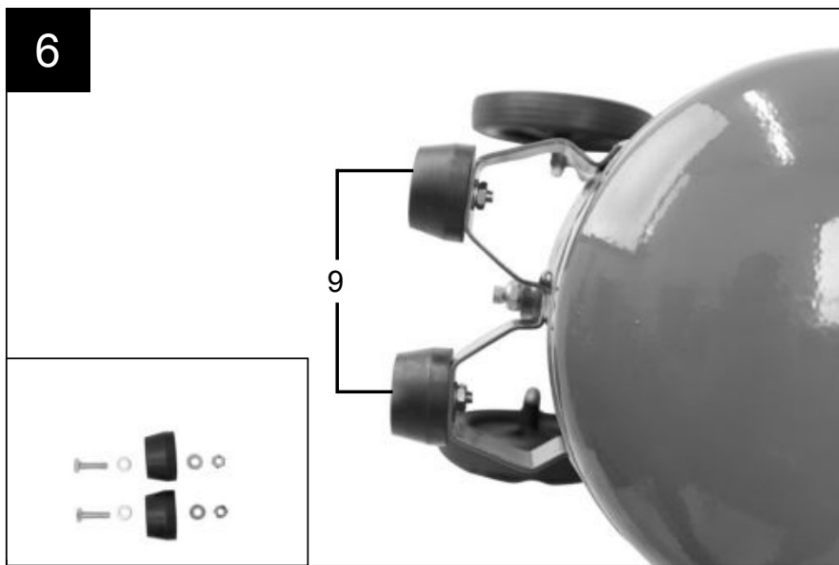
### Fitting the wheels (Fig. 5)

- Fit the supplied wheels (11) as shown.



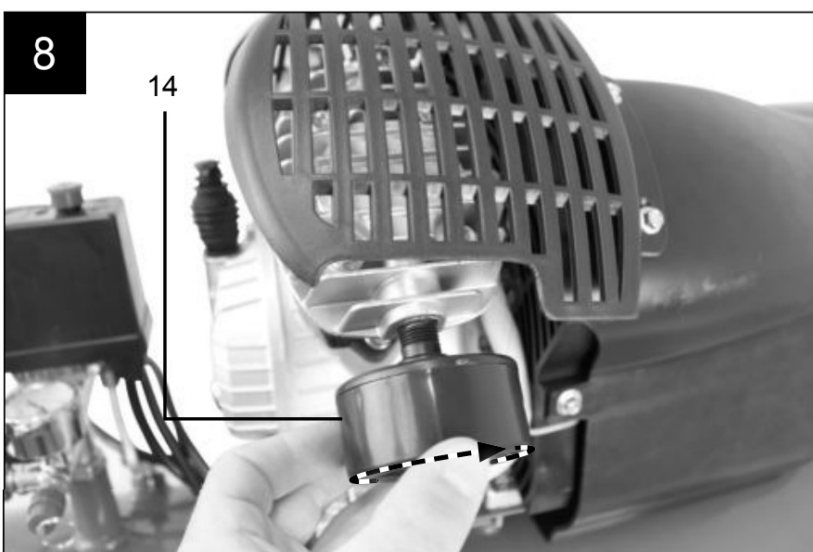
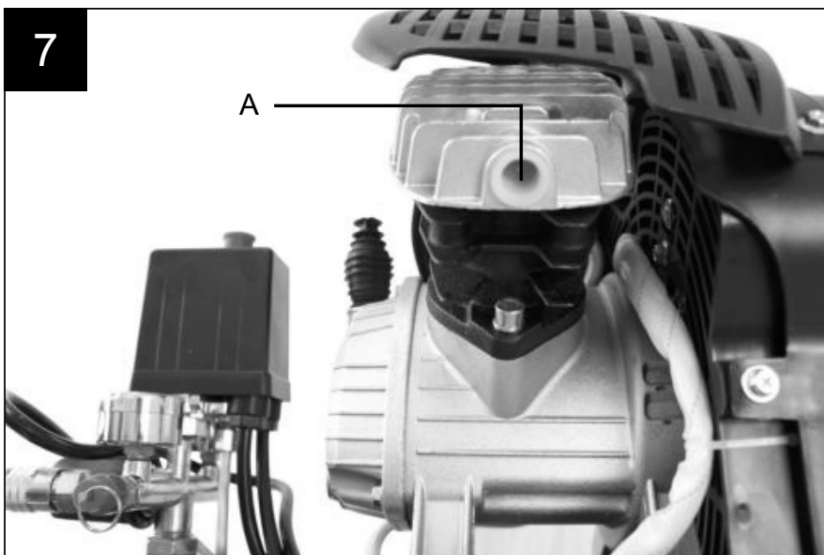
### Fitting the supporting foot (2x)(Fig. 6)

- Fit the supplied supporting foot (2x) as shown.



### Fitting the air filter (2x)(Fig. 7,8)

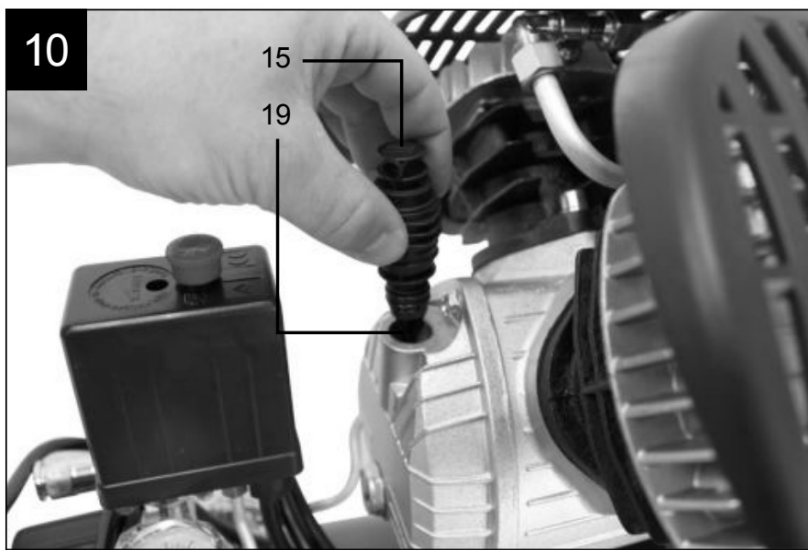
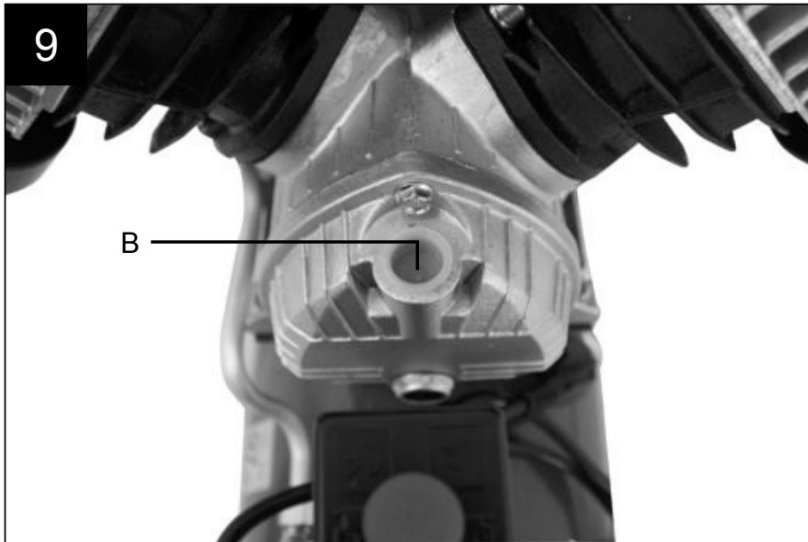
- Remove the transportation stop (A) and screw the air filter (14) to the equipment.



### Changing the transportation cover (B) (Fig. 9,10)

- Remove the transportation cover from the oil filter opening (19) and insert the supplied oil sealing plug (15) into

the oil filler opening.

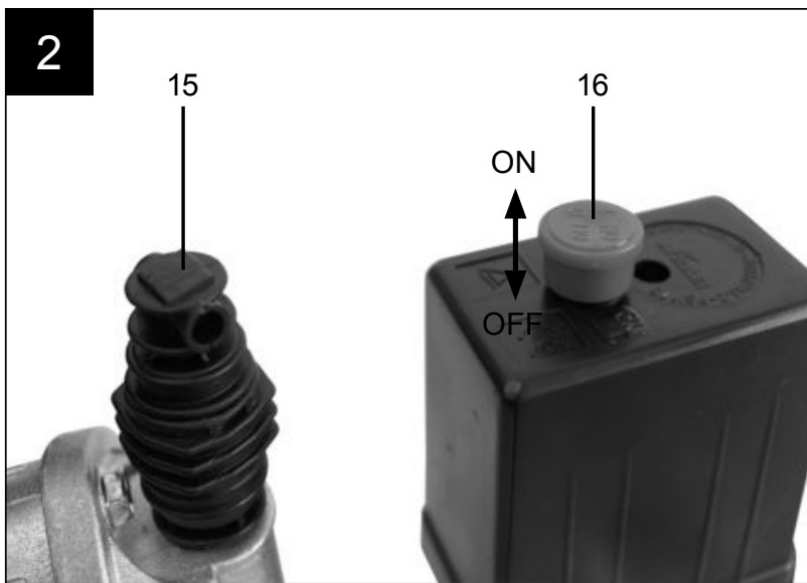


### Mains connection

- The compressor is equipped with a mains cable with shock-proof plug. This can be connected to any 230-240V ~ 50 Hz shock-proof socket.
- Before you use the machine, make sure that the mains voltage is the same as the operating voltage (see the rating plate).
- Long supply cables, extensions, cable reels etc. cause a drop in voltage and can impede motor startup.
- At low temperatures below +5°C, sluggishness may make starting difficult or impossible.

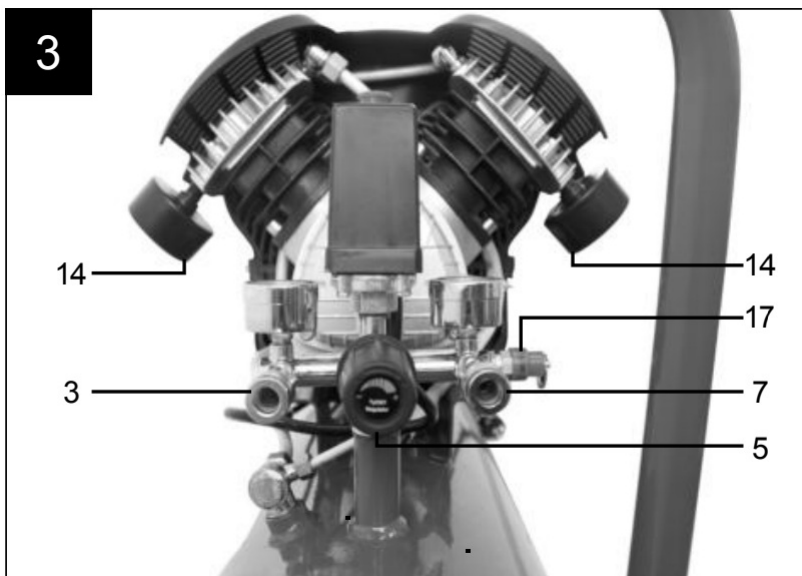
### ON/OFF switch (Fig. 2)

- Pull the ON/OFF switch (16) upwards to switch on the compressor. To switch off the compressor, press the ON/OFF switch down.



### Setting the pressure (Fig. 1,3)

- Use the pressure regulator (5) to set the pressure on the pressure gauge (4).
- The set pressure can be drawn from the quick lock coupling (3).
- The vessel pressure can be read off the pressure gauge (6).
- The vessel pressure is drawn from the quick lock coupling (7).



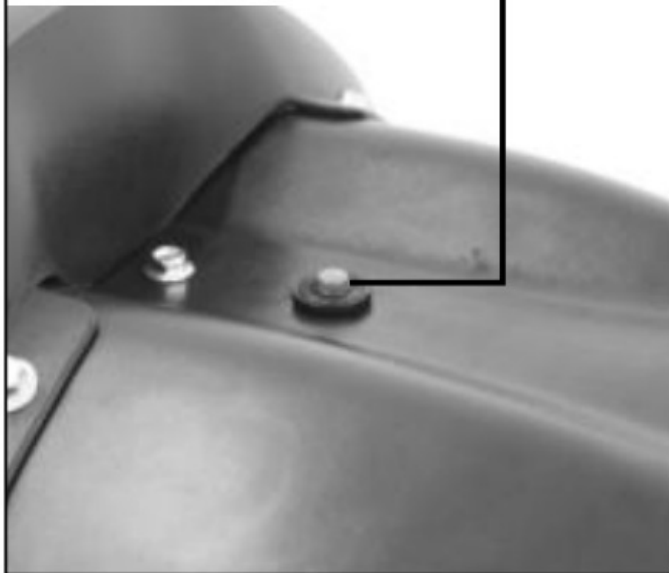
### Setting the pressure switch (Fig. 1)

- The pressure switch (2) is set at the factory. Cut-in pressure approx. 6 bar Cut-out pressure approx. 8 bar.
- **Overload switch (Fig. 14)**

The motor is fitted with an overload switch (18). If the compressor overloads, the overload switch switches off the equipment automatically to protect the compressor from overheating. If the overload switch triggers, switch off the compressor using the ON/ OFF switch (16) and wait until the compressor cools down. Then press the overload switch (18) and restart the compressor.

14

18



## Electrical connection

The electrical motor installed is connected and ready for operation. The connection complies with the applicable VDE and DIN provisions. The customer's mains connection as well as the extension cable used must also comply with these regulations.

- The product meets the requirements of EN 61000- 3-11 and is subject to special connection conditions. This means that use of the product at any freely select able connection point is not allowed.
- Given unfavourable conditions in the power supply the product can cause the voltage to fluctuate temporarily.
- The product is intended solely for use at connection points that a) do not exceed a maximum permitted supply impedance "Z" ( $Z_{\max} = 0.382 \Omega$ ), or b) have a continuous current-carrying capacity of the mains of at least 100 A per phase.
- As the user, you are required to ensure, in consultation with your electric power company if necessary, that the connection point at which you wish to operate the product meets one of the two requirements, a) or b), named above.

## Important information

In the event of an overloading the motor will switch itself off. After a cool-down period (time varies) the motor can be switched back on again.

## Damaged electrical connection cable

The insulation on electrical connection cables is often damaged.

This may have the following causes:

- Passage points, where connection cables are passed through windows or doors.
- Kinks where the connection cable has been improperly fastened or routed.
- Places where the connection cables have been cut due to being driven over.
- Insulation damage due to being ripped out of the wall outlet.
- Cracks due to the insulation ageing.

Such damaged electrical connection cables must not be used and are life-threatening due to the insulation damage.

Check the electrical connection cables for damage regularly. Make sure that the connection cable does not hang on the power network during the inspection.

Electrical connection cables must comply with the applicable VDE and DIN provisions. Only use connection cables with the marking „H05VV-F“. The printing of the type designation on the connection cable is mandatory.

### **AC motor**

- The mains voltage must be 230 V~
- Extension cables up to 25 m long must have a crosssection of 1.5 mm<sup>2</sup>

Connections and repairs of electrical equipment may only be carried out by an electrician.

Please provide the following information in the event of any enquiries:

- Type of current for the motor
- Machine data – type plate
- Machine data – type plate

### **Cleaning, maintenance, and storage**



#### **Important!**

Pull out the power plug before doing any cleaning and maintenance work on the equipment. Risk of injury from electric shock!



#### **Important!**

Wait until the equipment has cooled down completely! Risk of burns!



#### **Important!**

Always depressurize the equipment before carrying out any cleaning and maintenance work! Risk of injury!

### **Cleaning**

- Keep the equipment free of dirt and dust as far as possible. Wipe the equipment with a clean cloth or blow it down with compressed air at low pressure.

- We recommend that you clean the equipment immediately after you use it.
- Clean the equipment regularly with a damp cloth and some soft soap. Do not use cleaning agents or solvents; these may be aggressive to the plastic parts in the equipment. Ensure that no water can get into the interior of the equipment.
- You must disconnect the hose and any spraying tools from the compressor before cleaning. Do not clean the compressor with water, solvents or the like.

### Maintenance work on the pressure vessel (Fig. 1)

**⚠ Important!** To ensure a long service life of the pressure vessel (8), drain off the condensed water by opening the drain valve (10) each time after using. Release the vessel pressure first. Open the drain screw by turning counter-clockwise (looking at the screw from the bottom of the compressor) so that all the condensed water can run out of the pressure vessel. Then close the drain screw again (turn it clockwise). Check the pressure vessel for signs of rust and damage each time before using. Do not use the compressor with a damaged or rusty pressure vessel. If you discover any damage, then please contact the customer service workshop.

### **⚠ Important!**

The condensed water from the pressure vessel will contain residual oil. Dispose of the condensed water in an environmentally compatible manner at a suitable collection point.

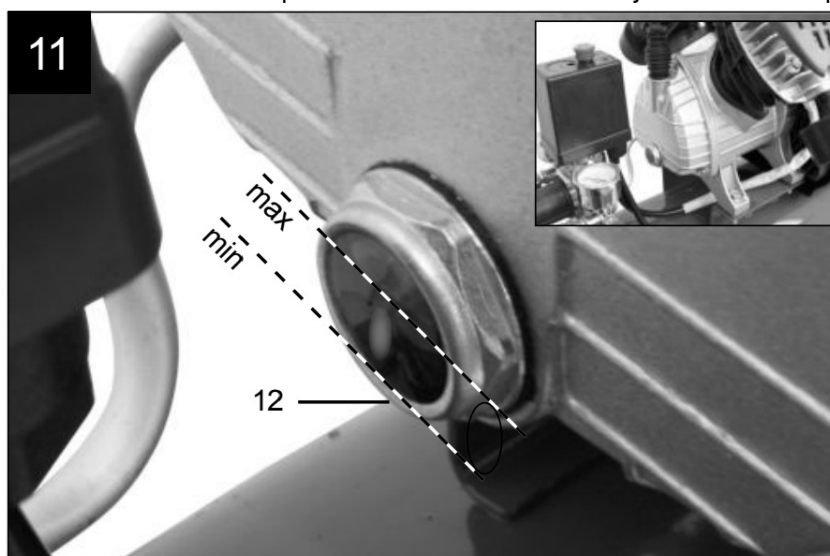
### Safety valve (Fig. 3)

The safety valve (17) has been set for the highest permitted pressure of the pressure vessel. It is prohibited to adjust the safety valve or remove its seal. Actuate the safety valve from time to time to ensure that it works when required. Pull the ring with sufficient force until you can hear the compressed air being released. Then release the ring again.

### Checking the oil level at regular intervals (Fig. 11)

Place the compressor on a level and straight surface.

The oil level must be between the MAX and MIN marks on the oil level window (12). Oil change: we recommend SAE 15W 40 or equivalent. The original oil filling must be changed after 100 hours in operation; thereafter the oil must be drained and replaced with new oil after every 500 hours in operation.



### Changing the oil (Fig. 1,10,11)

Switch off the engine and pull the mains plug out of the socket. Remove the oil sealing plug (15). After releasing any air pressure you can unscrew the oil drain plug (12) from the compressor pump (13).



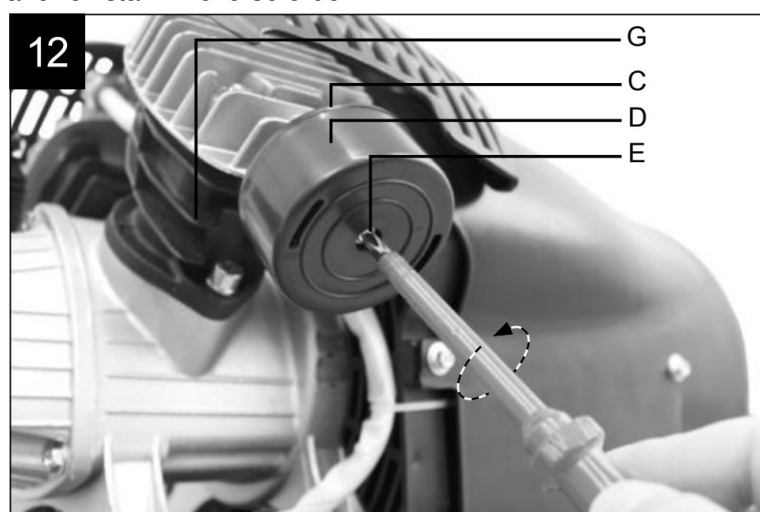
To prevent the oil from running out in an uncontrolled manner, hold a small metal chute under the opening and collect the oil in a vessel. If the oil does not drain out completely, we recommend tilting the compressor slightly. When the oil has drained out, re-fit the oil drain plug (12).

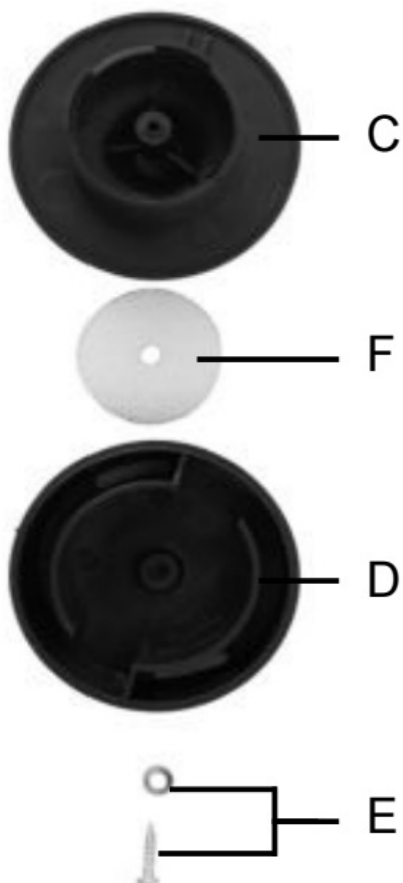
Dispose of the old oil at a drop-off point for old oil.

To fill in the correct quantity of oil, make sure that the compressor stands on an even surface. Fill new oil through the oil filler opening (19) until it comes up to the maximum level. This is marked with a red dot on the oil level window (12) (**Fig. 11**). Do not exceed the maximum filling quantity. Overfilling the equipment may result in damage. Reinsert the oil sealing plug (15) into the oil filler opening (19).

### **Cleaning the intake filter (Fig. 3, 12, 13)**

The intake filter prevents dust and dirt being drawn in. It is essential to clean this filter after at least every 300 hours in service. A clogged intake filter will decrease the compressor's performance dramatically. Open the screw (E) to remove the intake filter(2x). Then pull off the filter cover (D). Now you can remove the air filter (F). Carefully tap out the air filter, filter cover and filter housing. Then blow out these parts with compressed air (approx. 3 bar) and reinstall in reverse order.



**13**

### Storage

#### **Important!**

Pull out the mains plug and ventilate the equipment and all connected pneumatic tools. Switch off the compressor and make sure that it is secured in such a way that it cannot be started up again by any unauthorized person.

#### **Important!**

Store the compressor only in a dry location which is not accessible to unauthorized persons. Always store upright, never tilted! Oil may leak out!

### Releasing excess pressure

Release the excess pressure by switching off the compressor and using the compressed air which is still left in the pressure vessel, e.g. with a compressed air tool running in idle mode or with a blow-out pistol.

### Service information

Please note that the following parts of this product are subject to normal or natural wear and that the following parts are therefore also required for use as consumables.

Wear parts\*: belt, coupling

\* Not necessarily included in the scope of delivery!

### Disposal and recycling

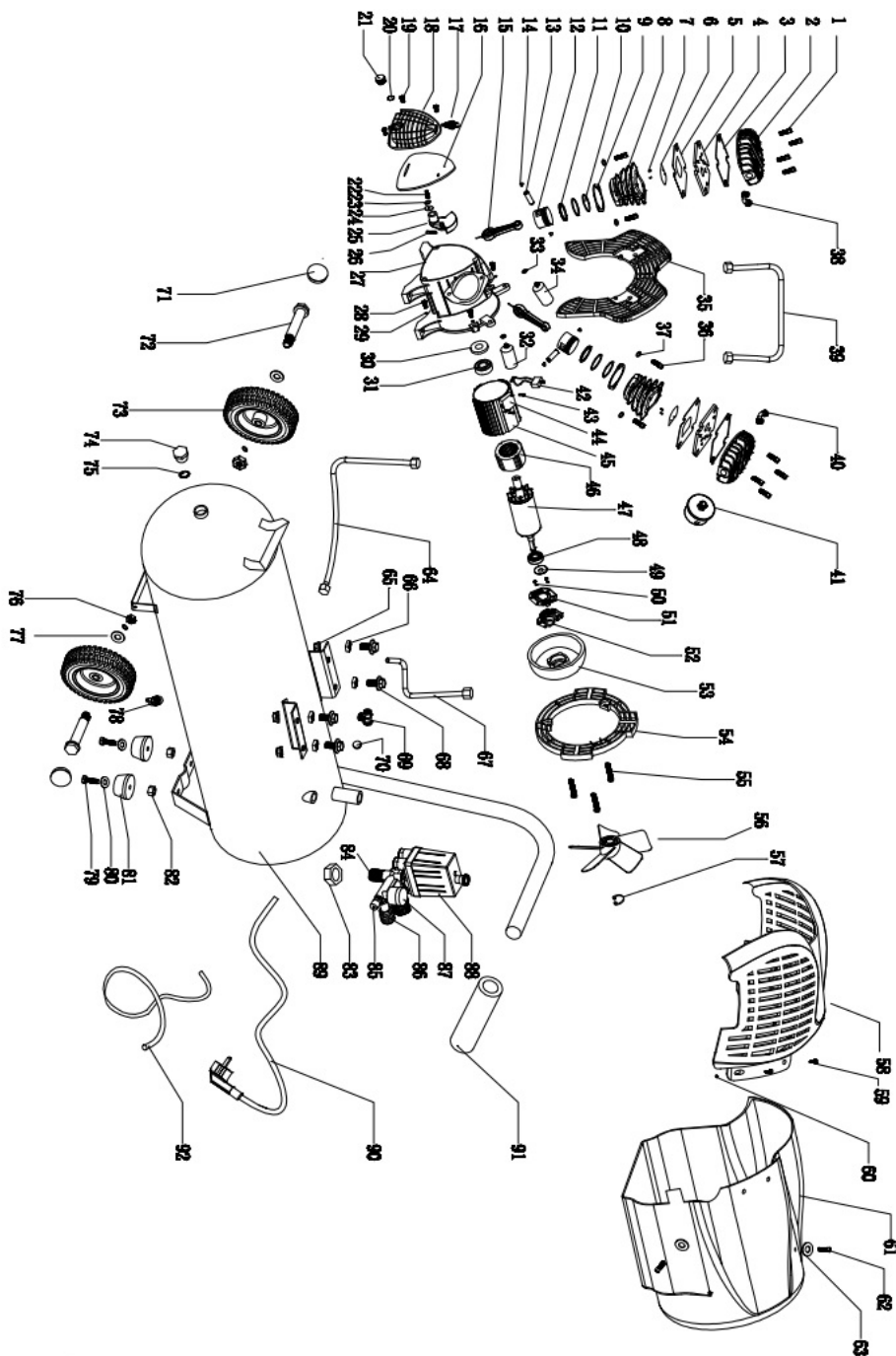
The equipment is supplied in packaging to prevent it from being damaged in transit. The raw materials in this packaging can be reused or recycled. The equipment and its accessories are made of various types of material, such as metal and plastic. Defective components must be disposed of as special waste. Ask your dealer or your

local council.

## Troubleshooting

| Fault   | Possible cause   | Remedy   |
|---|--|--|
| The compressor does not start.  | <ul style="list-style-type: none"><li>• No supply voltage.</li><li>• Insufficient supply voltage.</li><li>• Outside temperature is too low.</li><li>• Motor is overheated.</li></ul>               | <ul style="list-style-type: none"><li>• Check the supply voltage, the power plug and the socket-outlet.</li><li>• Make sure that the extension cable is not too long. Use an extension cable with large enough wires.</li><li>• Never operate with an outside temperature of below +5° C.</li><li>• Allow the motor to cool down. If necessary, remedy the cause of the overheating.</li></ul> |
| The compressor starts but there is no pressure.   | <ul style="list-style-type: none"><li>• The safety valve (17) leaks.</li><li>• The seals are damaged.</li><li>• The drain plug for condensation water (10) leaks.</li></ul>                        | <ul style="list-style-type: none"><li>• Have a service center replace the safety valve (17).</li><li>• Check the seals and have any damaged seals replaced by a service center.</li><li>• Tighten the screw by hand. Check the seal on the screw and replace if necessary.</li></ul>   |
| The compressor starts, pressure is shown on the pressure gauge, but the tools do not start. | <ul style="list-style-type: none"><li>• The hose connections have a leak.</li><li>• A quick-lock coupling has a leak.</li><li>• Insufficient pressure set on the pressure regulator (5).</li></ul> | <ul style="list-style-type: none"><li>• Check the compressed air hose and tools and replace if necessary.</li><li>• Check the quick-lock coupling and replace if necessary.</li><li>• Increase the set pressure with the pressure regulator.</li></ul>   |

## Exploded Parts



hereby declares the following conformity under the EU Directive and standards for the following article.



- X 2014/29/EU
- X 2014/35/EU
- 2006/28/EC
- 2005/32/EC
- X 2014/30/EU
- 2004/22/EC
- 1999/5/EC
- X 2014/68/EU
- 90/396/EC

- X 2011/65/EU  
89/686/EC\_96/58/EC
- X 2006/42/EC

#### **Annex IV**

Notified Body:

Notified Body No.:

Reg. No.:

- X 2000/14/EC\_2005/88/EC

#### **Annex V**

#### **X Annex VI**

Noise: measured LWA =93 dB(A); guaranteed LWA =97 dB(A)

Notified Body: TÜV SÜD Industrie Service GmbH

Notified Body No.: 0036

2004/26/EC

Emission. No:

**Standard references: EN 1012-1; EN 61000-6-1; EN 61000-6-3; EN 61000-3-2; EN 61000-3-11**

Ichenhausen, den 10.08.2016

Technical Director: 

Art.-No. 5906101901

Subject to change without notice

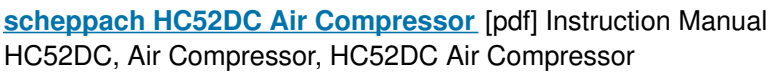
Documents registrar: Benjamin Schwarz

Günzburger Str. 69, D-89335 Ichenhausen

### **Warranty**

Apparent defects must be notified within 8 days from the receipt of the goods. Otherwise, the buyer's rights of claim due to such defects are invalidated. We guarantee for our machines in case of proper treatment for the time of the statutory warranty period from delivery in such a way that we replace any machine part free of charge which provably becomes unusable due to faulty material or defects of fabrication within such period of time. With respect to parts not manufactured by us we only warrant insofar as we are entitled to warranty claims against the upstream suppliers. The costs for the installation of the new parts shall be borne by the buyer. The cancellation of sale or the reduction of purchase price as well as any other claims for damages shall be excluded.

### **Documents / Resources**



- [!\[\]\(27c3f183a8911a7dac26d53c513f13df\_img.jpg\) scheppach | scheppach](#)

Manuals+,