




scheppach HC 24-8 Oil Compressor Instructions

[Home](#) » [Scheppach](#) » [scheppach HC 24-8 Oil Compressor Instructions](#) 

Contents

- [1 scheppach HC 24-8 Oil Compressor](#)
- [2 Spare Parts List](#)
- [3 Product Usage Instructions](#)
- [4 Documents / Resources](#)
 - [4.1 References](#)
- [5 Related Posts](#)



scheppach HC 24-8 Oil Compressor



Product Information

The HC24-8 compressor by Scheppach (DIY) Garland, with the main product code 5906154942, is a compact and portable compressor suitable for small to medium-sized tasks. It has a maximum pressure of 8 bar and comes with various spare parts, including a cylinder head, air filter, valve plate, piston, and connecting rod.

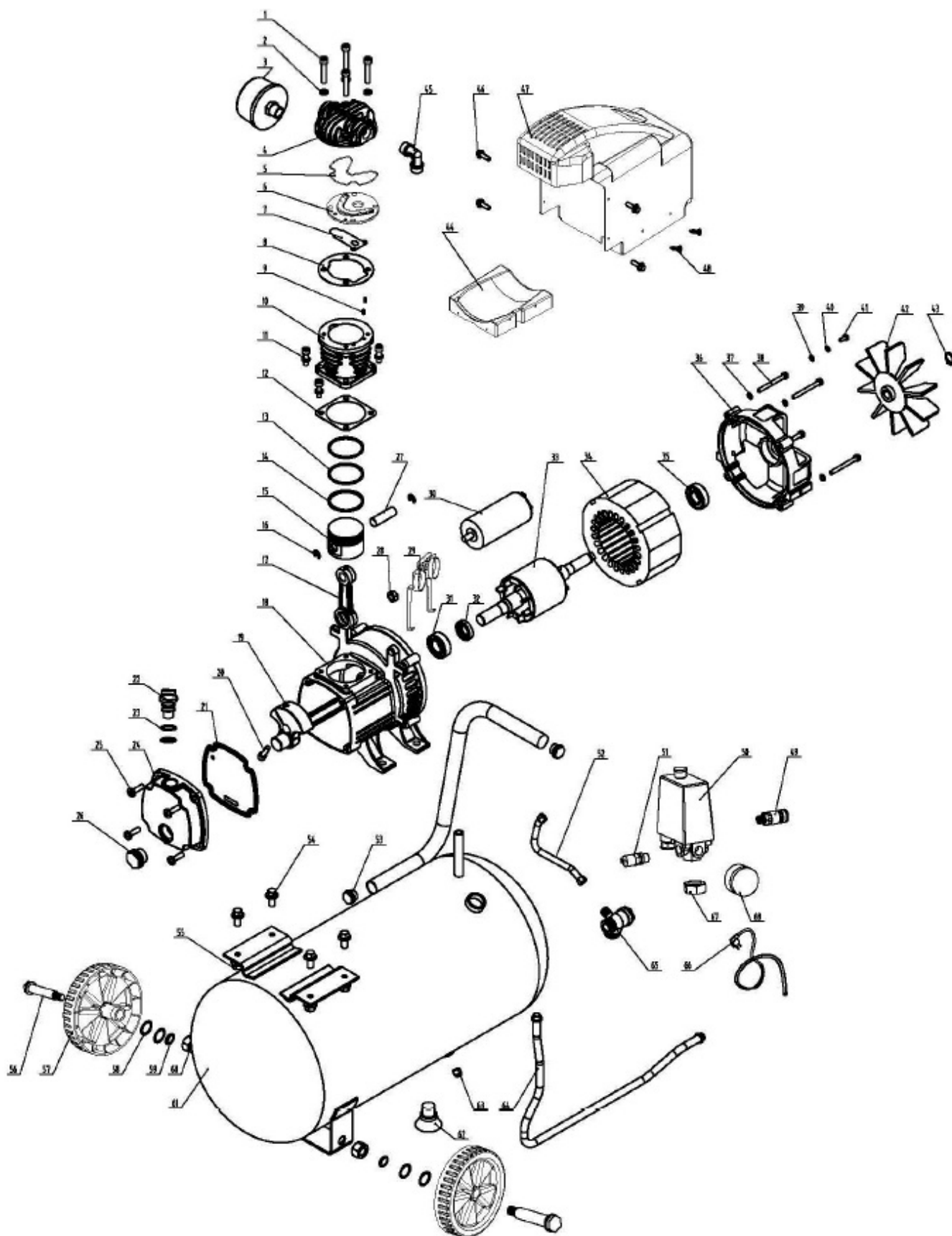
Spare Parts List

Main products **Spare part list**
 5906154942 171447 – 0145 – HC24-8 – –

Spare	Description	additional	Item	Abb.	ConstructStatus
0209124 1	cheese head screw	M6x40 8.8 912 VZ	1	A	*
5906101 036	air filter	M16x1,5 Gewinde	3	A	*
5906154 001	cylinder head		4	A	*
5906119 002	o cycle part 5		5	A	*

5906154 002	valve plate cpl.		6-9	A	*
0209123 7	cheese head screw M6x20 8.8 912 VZ	M6x20	11	A	*
5906154 003	cylinder gasket		12	A	*
5906154 004	piston ring set	(1 Satz = 3 Stück)	13	A	*
5906154 005	Piston cpl.		15,26,27	A	*
5906154 006	connecting rod		17	A	*
0209124 7	cheese head screw	M8x20 8.8 912 VZ	20	A	*
5906154 007	rubber gasket		21	A	*
3906129 009	breath pipe cpl.		22,23	A	*
5906154 008	crankcase cover		24	A	*
5906115 019	oil leveler with o-ring	SW22 / G 1/2"	26	A	*
0209340 5	hexagon nut M8	M8	28	A	*
5906154 009	capacitance		30	A	*
5906154 010	rotor		33	A	*
5906154 011	stator		34	A	*
0279851 1	screw	M4x10 4.8 DIN7985 verzinkt	41	A	*
5906154 012	fan		42	A	*
5906154 013	fan cover		47	A	*
5906131 011	quick coupling part 43	G 1/4"	49	A	*
5906115 064	pressure switch	8 bar	50	A	*
5906154 014	Unloading tube		52	A	*

Spare	Description	additional	Item	Abb.	ConstructStatus
5911210 018	hex bolt	M8x20	54	A	*
0209340 5	hexagon nut M8	M8	55	A	*
5906101 084	wheel axle (bulg length 47 mm)	Bund Ø12,7 x 47mm	56,58-60	A	*
5906115 051	wheel		57	A	*
5911210 018	hex bolt	M8x20	60	A	*
5906115 053	washer foot part 53		62	A	*
5906101 066	vent bolt	3/8" / Ø16,6mm	63	A	*
5906154 015	High pressure pipe		64	A	*
5906115 043	check valve only brass	G1/2"xG3/8"xG1/8"	65	A	*
5902106 014	Power Line	2,3m / 3×1.00mm ²	66	A	*
3906103 030	lock nut 1/4"	G 1/4" / SW 19	67	A	*
5906154 016	Pressure gauge		68	A	*
5906101 090	enclosed accessories bag		o.Abb.	A	*



Product Usage Instructions

1. Before use, make sure the compressor is on a stable surface and all components are securely attached.
2. Connect the power line to a power source and turn the compressor on by flipping the switch.
3. Adjust the pressure switch to the desired level, up to a maximum of 8 bar. The pressure gauge will display the current pressure level.
4. Attach the high-pressure pipe to the quick coupling part and connect it to the tool or device that requires


compressed air.

5. During use, monitor the pressure level and turn off the compressor if it exceeds the recommended level or if there are any unusual sounds or vibrations.
6. After use, turn off the compressor and disconnect it from the power source. Release any remaining pressure by opening the vent bolt.
7. Perform regular maintenance as instructed in the user manual, including cleaning and replacing filters, checking oil levels, and inspecting for any wear or damage to components.

For more detailed information on spare parts and maintenance, please refer to the user manual or visit the Scheppach website for additional resources.

Do you know: From now on you can view spare parts lists in our spare parts shop and order spare parts and accessories directly. More information can be found here: <https://www.scheppach.com/Shop.aspx>

Documents / Resources

	<p>scheppach HC 24-8 Oil Compressor [pdf] Instructions HC 24-8 Oil Compressor, HC 24-8, Oil Compressor, Compressor</p>
---	--

References

-  [Scheppach Shop](#)