

scheppach DP5000 Track Dumper



scheppach DP5000 Track Dumper Instruction Manual

[Home](#) » [Scheppach](#) » [scheppach DP5000 Track Dumper Instruction Manual](#) 

Contents

- 1 [scheppach DP5000 Track Dumper](#)
- 2 [Product Information](#)
- 3 [Product Usage Instructions](#)
- 4 [Explanation of the symbols on the device](#)
- 5 [Introduction](#)
- 6 [Product Description](#)
- 7 [Proper use](#)
- 8 [General safety instructions](#)
- 9 [Technical data](#)
- 10 [Unpacking](#)
- 11 [Before commissioning](#)
- 12 [Startup](#)
- 13 [Cleaning](#)
- 14 [Storage](#)
- 15 [Maintenance](#)
- 16 [Disposal and recycling](#)
- 17 [Troubleshooting](#)
- 18 [EXPLODE VIEW](#)
- 19 [EU Declaration of Conformity](#)
- 20 [Warranty](#)
- 21 [Documents / Resources](#)
 - 21.1 [References](#)



scheppach DP5000 Track Dumper



Product Information

Specifications

- Model: DP5000
- Product Type: Track Dumper
- Engine Type: 4-Stroke
- Maximum Load Capacity: 500 kg
- Dimensions: 950 mm x 680 mm x 465 mm
- Fuel Type: Unleaded gasoline with octane rating of 90 and max. 5% bio-ethanol
- Fuel Tank Capacity: 3.6 liters
- Oil Capacity: 0.6 liters for engine and transmission
- Recommended Oil Type: SAE 10W-30 / SAE 10W-40
- Noise Level: 78.23 dB (Sound pressure), 98.4 dB (Sound power)
- Vibration Level: 10.1 m/s² (Left handle), 11.3 m/s² (Right handle)

Product Usage Instructions

Introduction

Welcome to the user manual for the DP5000 Track Dumper. This guide will help you operate the equipment safely and efficiently.

Product Description

The product consists of various components including Gas lever, Engine switch, Right steering lever, Clutch lever, Left steering lever, Tipping lever, Gear selector lever, Transport tray, Gearbox, and Chain.

General Safety Instructions

Always wear safety shoes while operating the dumper. Smoking or open flames are strictly prohibited near the

equipment. Keep other individuals away from the work area to prevent accidents.

Unpacking

Prior to using the product, carefully unpack all components and ensure all screws, nuts, and bolts are securely tightened.

Preparing for Operation

Before starting the engine, ensure that the clutch is disengaged and operate the product only outdoors in a well-ventilated area.

FAQ (Frequently Asked Questions)

- **Q: What type of fuel should be used with the DP5000 Track Dumper?**

A: The dumper requires unleaded gasoline with an octane rating of at least 90 and a maximum bio-ethanol content of 5%.










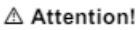
- **Q: How should I stop the engine in case of an emergency?**

A: To stop the engine during an emergency, move the Gas lever to the "OFF" position and turn off the engine using the Engine switch.

Explanation of the symbols on the device

Symbols are used in this manual to draw your attention to potential hazards. The safety symbols and the accompanying explanations must be fully understood. The warnings themselves will not rectify a hazard and cannot replace proper accident prevention measures.

	Read through this operating manual carefully.
	Wear safety goggles. Wear hearing protection.
	Wear safety shoes.
	Wear work gloves.
	Removing or manipulating the protective or safety devices is prohibited. Do not touch hot machine parts.
	Do not touch hot machine parts.
	No smoking or naked flames.
	Objects that are ejected can cause injuries.
	Keep other people away from the working range.
	Danger due to inhalation of exhaust gases!
	Important! The exhaust gases are toxic. Do not operate the engine in areas that are not ventilated.

 	Do not use the device on slopes steeper than 20°. Tipping hazard!
	Warning against flammable substances.
 	The maximum gradient angle is 20° uphill and 6° downhill.
	Sound power level
	Choke
	Speed control
	The product complies with the applicable European directives.
 Attention!	We have marked points in this operating manual that impact your safety with this symbol.

Introduction

Manufacturer:

Scheppach GmbH
Günzburger Straße 69
D-89335 Ichenhausen

Dear Customer,

we wish you much pleasure and success in working with your new device.

Note: In accordance with the applicable product liability laws, the manufacturer of this device assumes no liability for damage to the device or caused by the device arising from:

- Improper handling
- Failure to comply with the operating instructions
- Repairs carried out by third parties, and unauthorised specialists.
- Installing and replacing non-original spare parts
- Application other than specified

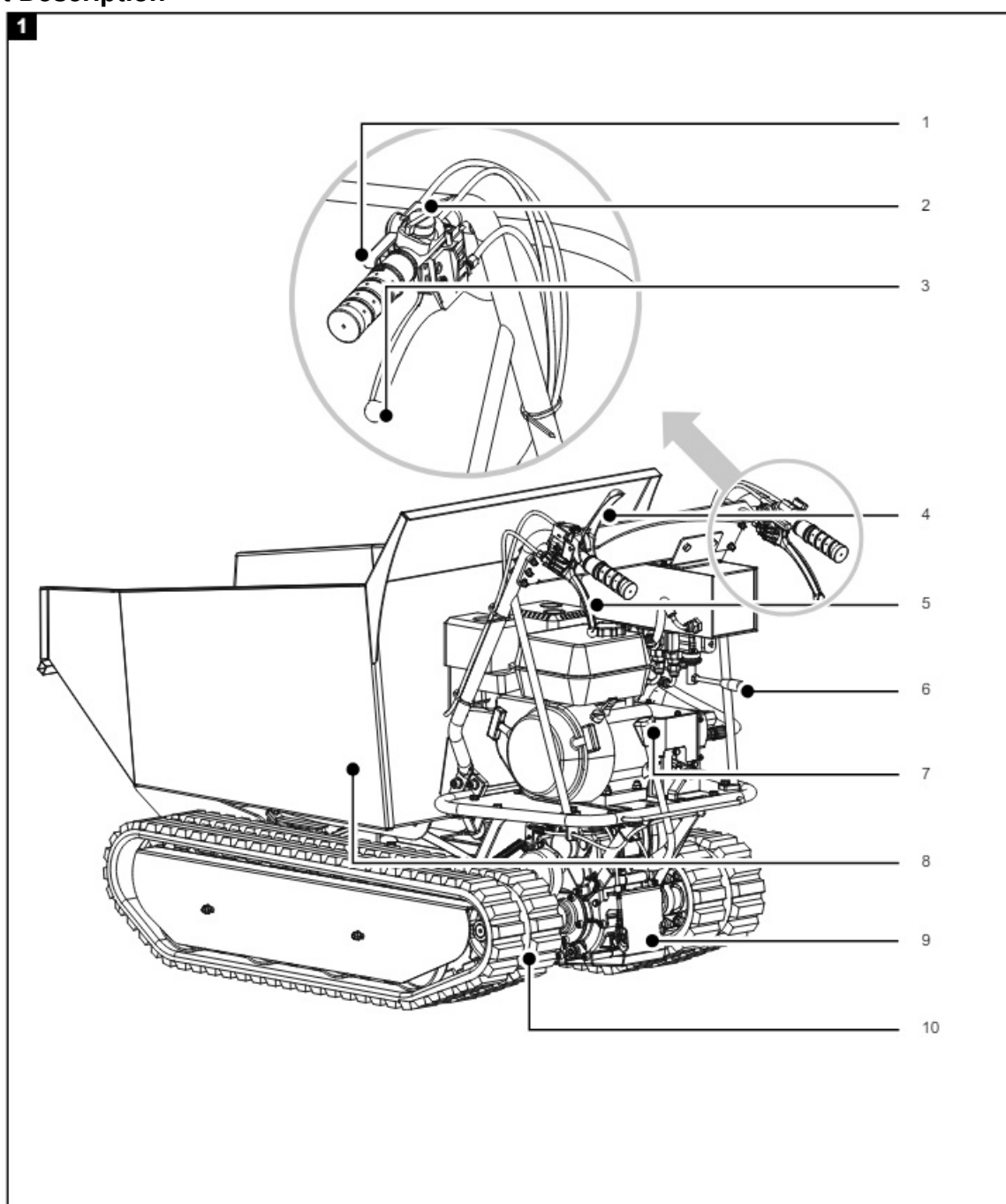
Note: Read through the complete text in the operating manual before installing and commissioning the device.

- This operating manual should help you to familiarise yourself with your device and to use it for its intended purpose.
- The operating manual includes important instructions for the safe, proper and economical operation of the device, for avoiding danger, for minimising repair costs and downtimes, and for increasing the reliability and

extending the service life of the device.

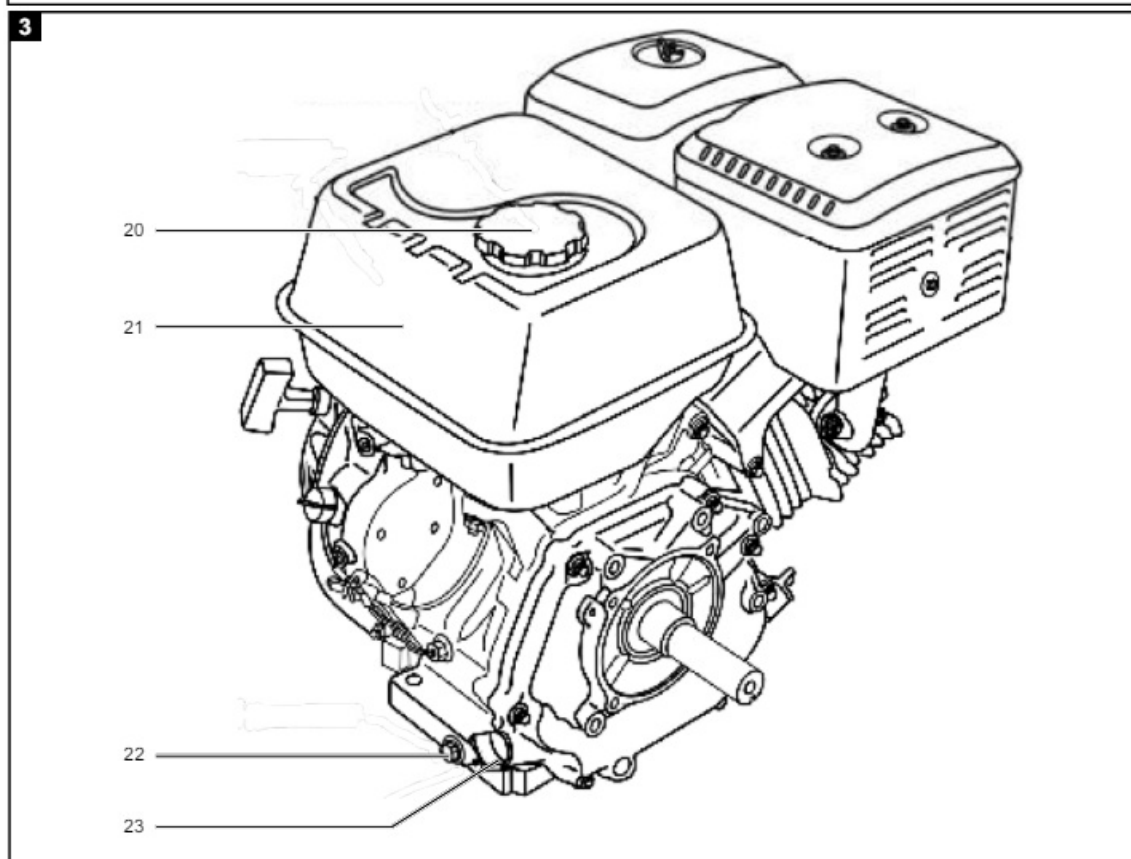
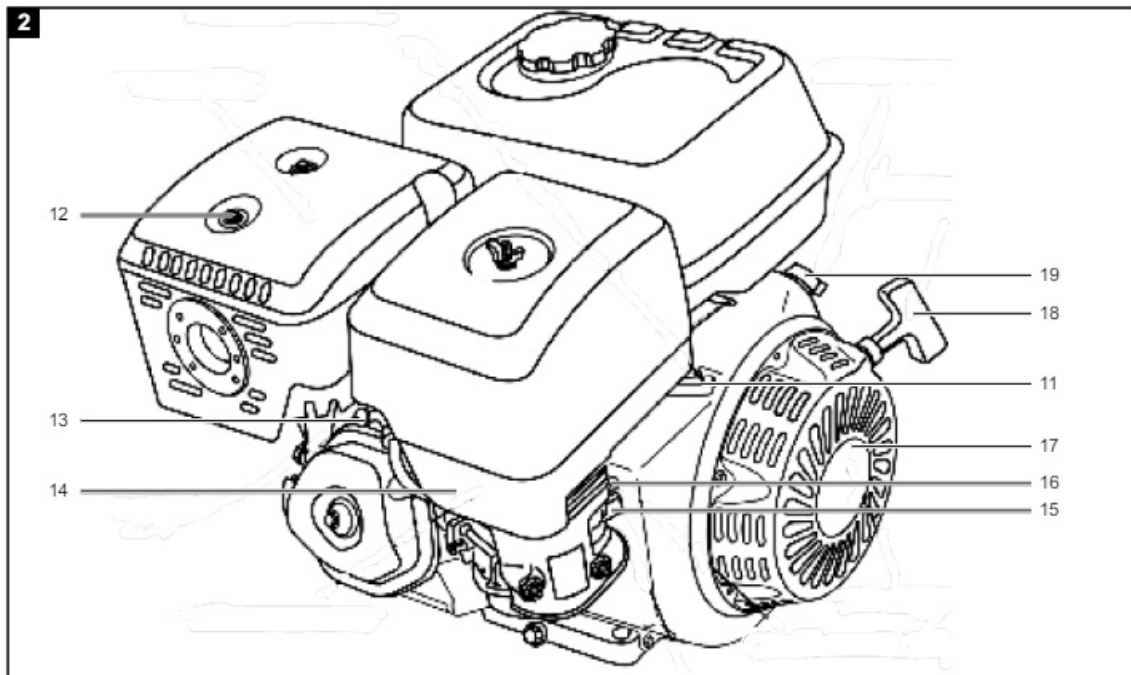
- In addition to the safety instructions in this operating manual, you must also observe the regulations applicable to the operation of the device in your country.
- Keep the operating manual at the device, in a plastic sleeve, protected from dirt and moisture.
- They must be read and carefully observed by all operating personnel before starting the work.
- The device may only be used by personnel who have been trained to use it and who have been instructed with respect to the associated hazards.
- The required minimum age must be observed.
- In addition to the safety instructions in this operating manual and the separate regulations of your country, the generally recognised technical rules relating to the operation of such machines must also be observed.
- We accept no liability for accidents or damage that occur due to a failure to observe this manual and the safety instructions.

Product Description



1. Throttle
2. Engine switch
3. Right steering lever
4. Clutch lever
5. Left steering lever
6. Tilt lever
7. Gear selector lever
8. Transport tray
9. Transmission
10. Chain

Engine (Fig. 2-3)



11. Throttle
12. Exhaust pipe
13. Spark plug
14. Air filter
15. Wing nut
16. Fuel valve
17. Choke lever
18. Pull starter
19. On/off switch
20. Fuel filler cap
21. Fuel tank
22. Oil drain screw
23. Oil filler plug with oil dipstick

Scope of delivery

- Operating manual
- Spark plug wrench
- Motor manual
- Enclosed accessories bag

Proper use

The machine is intended exclusively for small loading and transport tasks in gardening, landscaping and agriculture. The machine may only be used in the intended manner. Any use beyond this is improper. The user/operator, not the manufacturer, is responsible for damages or injuries of any type resulting from this.

An element of the intended use is also the observance of the safety instructions, as well as the assembly instructions and operating information in the operating manual. Persons who operate and maintain the machine must be familiar with it and must be informed about potential dangers. In addition, the applicable accident prevention regulations must be strictly observed. Other general occupational health and safety-related rules and regulations must be observed. The liability of the manufacturer and resulting damages are excluded in the event of modifications of the machine. The machine may only be operated with original parts and original accessories from the manufacturer. Please note that our equipment was not designed with the intention of use for commercial or industrial purposes. We assume no guarantee if the device is used in commercial or industrial applications, or for equivalent work.

General safety instructions

Get to know your machine:

- Read and understand the operating manual and the signs attached to the machine. Learn the mode of operation and the operating limits as well as its specific sources of danger.
- Familiarise yourself thoroughly with the controls and their proper function.
- Learn how to stop the machine and quickly disengage the controls.
- Be sure to read and understand all instructions and safety precautions as described in the engine manufacturer's manual that is supplied separately with your machine.

- Do not attempt to operate the machine until you fully understand how to properly operate and maintain the engine and how to avoid injury and/or property damage.

Working range

- Never leave the machine on or running in an enclosed space. The exhaust gases are dangerous, they contain carbon monoxide, an odourless and deadly gas.
- Operate this machine only in a well-ventilated outdoor area. Never operate the machine without good visibility or light.

Personal safety

- Do not operate the machine under the influence of drugs, alcohol or medication that may impair your ability to use it properly.
- Dress properly. Wear thick, long trousers, boots and gloves. Do not wear loose clothing, shorts or jewellery of any kind. Secure long hair so that it is at shoulder height at most.
- Keep hair, clothing and gloves away from moving parts. Loose clothes, jewellery or long hair can be caught in moving parts.
- Use personal safety equipment. Always wear eye protection. Protective equipment, such as dust masks, safety helmets or hearing protection for the relevant operating conditions reduce the risk of injury.
- Check your machine before you start it. Ensure that protective devices are correctly fitted and in working order. Make sure that all nuts, bolts, etc. are tight.
- Never use the machine if it needs repair or in poor technical condition. Replace damaged, missing or defective parts before use.
- Check for fuel leaks. Keep the machine in a safe operating condition.
- Safety devices must never be removed or manipulated. Check regularly that they are functioning properly.
- Do not use the machine if the engine switch does not turn it on or off. All petrol-driven machines that cannot be operated with the engine switch are dangerous and must be replaced.
- Get into the habit of checking that screwdrivers and tools have been removed from the machine area before starting. A screwdriver or tool that is on a rotating part of the machine can cause injury.
- Stay alert, watch what you are doing and use common sense while using the machine.
- Do not lean over it. Do not operate the machine barefoot or with sandals or similar light footwear. Wear safety shoes that protect your feet and improve your grip on slippery surfaces.
- Ensure safe footing and balance at all times. This allows better control of the machine in unexpected situations.
- Prevent unintentional start-up. Make sure that the engine is switched off before transporting the machine or carrying out maintenance or repair work on the machine. Transporting or performing maintenance or repair work on a machine with the engine running always poses a risk of accidents.

Safe use of fuel

- Fuel is highly flammable and its vapours can deflagrate abruptly if ignited. Take precautionary measures during use to reduce the likelihood of serious injury.
- When refilling or draining the fuel tank, use an approved fuel tank and operate in a clean, well-ventilated outdoor area. Smoking, sparks, naked flames or other sources of ignition near the work area when refuelling or

operating the machine are prohibited. Never add fuel indoors.

- Keep earthed conductive objects, such as tools, away from exposed live parts and connections to avoid spark formation or arcing. These events could ignite fuel vapours.
- Always switch off the engine and let it cool down before refilling the fuel tank. Never remove the tank cover and/or refuel while the engine is running or while the engine is hot. Never operate the machine with known leaks in the fuel system.
- Slowly loosen the tank cover to slowly release the pressure in the tank.
- Never overfill the fuel tank. The tank must not be filled to more than 12.5 mm (1/2") below the lower edge of the filling nozzle, as the fuel can expand due to the engine heat.
- Replace all fuel tanks and container covers securely and mop up spilled fuel. Never operate the machine without the tank cover firmly in place.
- Avoid the formation of ignition sources for spilled fuel. After spilling fuel, do not attempt to start the engine, but move the machine away from the area where the fuel was spilled and avoid creating ignition sources until the fuel vapour has dissipated.
- Store fuel only in containers specially approved for this purpose.
- Always store fuel in a cool, well-ventilated place, at a safe distance from sparks, open flames or other sources of ignition.
- Never store fuel or machinery with fuel in the tank in a building where fuel vapour can be reached by a spark, open flame or other ignition source such as a kettle, stove, clothes dryer and the like. Allow the engine to cool down before storing it in an enclosed space.

Machine use and care

- Position the machine so that it cannot move during maintenance, cleaning, setting, assembly of accessories or spare parts and storage.
- Do not operate the machine by force. Use the right machine for your application. The right machine will do the job better and safer when operating at the intended rated capacity.
- Do not change the settings of the engine regulator and do not exceed the maximum speed of the engine. The governor controls the maximum safe operating speed of the engine.
- Do not run the engine at high speed without load.
- Do not put your hands or feet in the area of rotating parts.
- Avoid contact with hot fuel, oil, exhaust gases and hot surfaces. Do not touch the engine or exhaust pipe. These parts become very hot during operation. They remain hot for a short time after the machine is switched off. Allow the engine to cool down before carrying out maintenance or adjustment work.
- If the machine should make unusual noises or vibrations after starting, stop the engine immediately, disconnect the ignition cable and determine the cause. Unusual noises or vibrations are usually a safety sign of problems.
- Only use assembly and accessory parts approved by the manufacturer. Failure to comply with this note may result in injury.

Additional safety instructions

- Carefully check the area where work is to be done and keep the work area clean and free of dirt to prevent trip hazards. Work on a level smooth floor.
- During assembly, installation, operation, maintenance, repair or transport, never place any part of your body in

a position where it would be in danger if movement occurred.

- Keep all onlookers, children and pets at least 75 feet (23 m) away. Stop the machine immediately if anyone approaches.
- Do not climb on the skip and do not carry passengers.
- Never park the machine in a place with unstable ground that could give way, especially when the machine is loaded.
- Release the clutch lever before starting the engine.
- Start the engine carefully according to the instructions and keep your feet far away from the moving parts.
- Never leave the operating position while the engine is running.
- Always hold the device with both hands during operation. Always hold the handlebar securely. Remember that the machine can unexpectedly jump up or forward if it encounters hidden obstacles, such as large stones.
- The machine must always be guided at walking speed.
- Do not overload the machine. Drive at a safe speed, adjust the speed to the slope of the terrain, the surface condition of the road, and the weight of the load.
- Take particular care when using reverse gear or pulling the machine towards you.
- Be especially careful when working on or crossing gravel paths, pavements or roads. Always watch out for hidden dangers and traffic.
- Drive on soft ground in first forward/reverse gear. Do not accelerate hard, steer or brake sharply.

Residual risks

The machine has been built according to the state-of-the-art and the recognised technical safety requirements. However, individual residual risks can arise during operation.

- Furthermore, despite all precautions having been met, some non-obvious residual risks may still remain.
- Residual risks can be minimised if the “Safety Instructions” and the “Intended Use” together with the operating manual as a whole are observed.
- Use the tool that is recommended in this operating manual. This is how to ensure that your machine provides optimum performance.
- Keep your hands away from the working area when the machine is in operation.

Technical data

Engine	1-cylinder, 4-stroke OHV engine
Motor power	4.1 kW
Displacement	196 cm ³
Gears	3 forward + 1 reverse
1st gear	1.57 km/h
2nd gear	2.93 km/h
3rd gear	3.66 km/h
Reversing speed	1.14 km/h
Load-bearing capacity	500 kg
Transport tray length	950 mm
Transport tray width	680 mm
Transport tray depth	465 mm
Weight	250 kg
Type of engine	4-stroke motor
Idle speed	3000 rpm
Maximum speed	3600 rpm
Engine starter	Reverse starter (Pull starter)
Fuel	Unleaded petrol from octane rating 90 and maximum organic ethanol content of 5%
Fuel tank capacity	3.6 l
Engine oil tank capacity	0.6 l
Gearbox oil tank capacity	0.6 l
Hydraulic oil tank capacity	4.3 l
Required engine oil	SAE 10W-30 / SAE 10W-40
Gearbox oil	SAE30 / 80W-90
Hydraulic oil	HLP22 / HLP32
Max. incline	20°

Noise & vibration

Warning: Noise can have serious effects on your health. If the machine noise exceeds 85 dB, please wear suitable hearing protection.

Information about noise level measured in accordance with applicable standards:

Sound pressure L_{pA}	78.23 dB
Sound pressure L_{wA}	98.4 dB
Measurement uncertainty K_{pA}	2.31 dB

Wear hearing protection.

Excessive noise can result in a loss of hearing.

Vibration Handlebar Left A_{hv}	10.1 m/s ²
Vibration Handlebar Right A_{hv}	11.3 m/s ²
Measurement uncertainty K_{pA}	1,5 m/s ²

The specified vibration emission value has been measured according to a standardised test procedure and can be used for comparison with another. The specific vibration emission value can also be used for an initial assessment of the load.

Unpacking

- Open the packaging and carefully remove the device.
- Remove the packaging material, as well as the packaging and transport safety devices (if present).
- Remove the transport locks with a suitable tool (e.g. scissors) (not included in the scope of delivery).
- Check whether the scope of delivery is complete.
- Check the device and accessory parts for transport damage. In the event of complaints, the carrier must be informed immediately. Later claims will not be recognised.
- If possible, keep the packaging until the expiry of the warranty period.
- Familiarise yourself with the device using the operating manual before using for the first time.
- With accessories as well as wearing parts and replacement parts use only original parts. Spare parts can be obtained from your specialist dealer.
- When ordering please provide our article number as well as type and year of manufacture for your equipment.

WARNING! The device and the packaging material are not children's toys! Do not let children play with plastic bags, films or small parts! There is a danger of choking or suffocating!

Before commissioning

WARNING! Health hazard!

Inhalation of petrol/lubricating oil vapours and exhaust gases can cause serious damage to health, unconsciousness and in extreme cases death.

- Do not breathe petrol/lubricating oil vapours and exhaust gases.
- Operate the product outdoors only.

NOTE! Product damage

Using the product without or with too little engine and gear oil can result in engine damage.

- Fill with petrol and oil before commissioning. The product is supplied without engine and gearbox oil.

NOTE! Environmental damage!

Spilled oil can pollute the environment permanently. The liquid is highly toxic and can quickly lead to water pollution.

- Fill/empty oil only on level, paved surfaces.
- Use a filling nozzle or funnel.
- Collect drained oil in a suitable container.
- Wipe up spilled oil carefully immediately and dispose of the cloth according to local regulations.
- Dispose of oil as per local regulations.

NOTE! Risk of damage!

If incorrectly stored or undrained fuel is used, the carburettor may become clogged or engine operation may be affected.

- Put unused fuel in an airtight vessel and store it in a dark, cool room.

Check before operation

- Check all sides of the engine for oil or fuel leaks.
- Check the engine oil level.
- Check the fuel level – the tank should be at least half-full.
- Check the condition of the air filter.
- Check the condition of the fuel lines.
- Make sure that the spark plug connector is attached to the spark plug.
- Look for signs of damage.
- Check that all protective covers are in place and all screws, nuts and pins are tightened.

Filling up with engine oil (Fig. 3)

Attention! The dumper is delivered without engine oil. Therefore, ensure that you add oil before commissioning. Use multigrade oil (SAE 10W-30 or 10W-40) for this.

Check the oil level regularly before commissioning. An oil level that is too low can damage the engine.

1. Place the dumper on a level, even surface.
2. Unscrew the oil dipstick (23).
3. Fill the tank with engine oil using a funnel (not included in the scope of delivery). Note the max. filling capacity of 600 ml. Carefully fill the oil up to the lower edge of the filling port.
4. Wipe the oil dipstick (23) with a clean, lint-free cloth.
5. Reinsert the oil dipstick (23) and check the oil level without screwing the dipstick tight again.
6. The oil level must be within the middle mark on the oil dipstick.
7. If the oil level is too low, add the recommended amount of oil (max. 600 ml).
8. Then screw the oil dipstick (23) in again.

Filling up with petrol (Fig. 3)

DANGER! Risk of fire and explosion!

When filling, fuel may ignite and even explode. This can lead to severe burns or death.

- Switch off the engine and let it cool down.
- Keep heat, flames and sparks away.
- Only fill up with fuel outdoors.
- Wear protective gloves.
- Avoid contact with skin and eyes.
- Start the product at a distance of at least 3 m from the fuel filling point.
- Watch out for leaks. If the petrol is leaking, do not start the engine.

Attention! The plate vibrator is delivered without petrol. It is therefore essential to fill with petrol before commissioning. Use only RON 95 unleaded petrol.

1. Clean the area surrounding the filling area. Impurities in the tank lead to operational faults.
2. Carefully open the tank cover (20) so that any possible overpressure can be relieved.
3. Fill the fuel tank (21) with petrol using a funnel (not included in the scope of delivery). Note the max. filling capacity of 3.6 litres. Carefully fill the petrol up to the lower edge of the filling nozzle.
4. Close the tank cover (20) again. Ensure that the fuel cap is tightly sealed.
5. Clean the fuel cap and the surroundings.
6. Check the tank and fuel lines for leaks.
7. Move at least three meters away from the refueling area before starting the engine.

Startup

ATTENTION! Before starting work, always check that the transport tray (8) is securely locked!

ON/OFF switch (19)

The ON/OFF switch (19) activates or deactivates the ignition system. The ON/OFF switch (19) must be in the ON position for the engine to run.

The engine stops when the ON/OFF switch (19) is moved to the OFF position.

Clutch lever (4)

- Operating the clutch lever (4)
 - Clutch engaged:
- Disengaging the clutch lever (4)
 - Clutch disengaged.

Throttle (1)

The throttle (1) controls the speed of the engine. If the lever is moved in the directions shown, the engine runs faster (H) or slower (L).

Fast =



Slow =



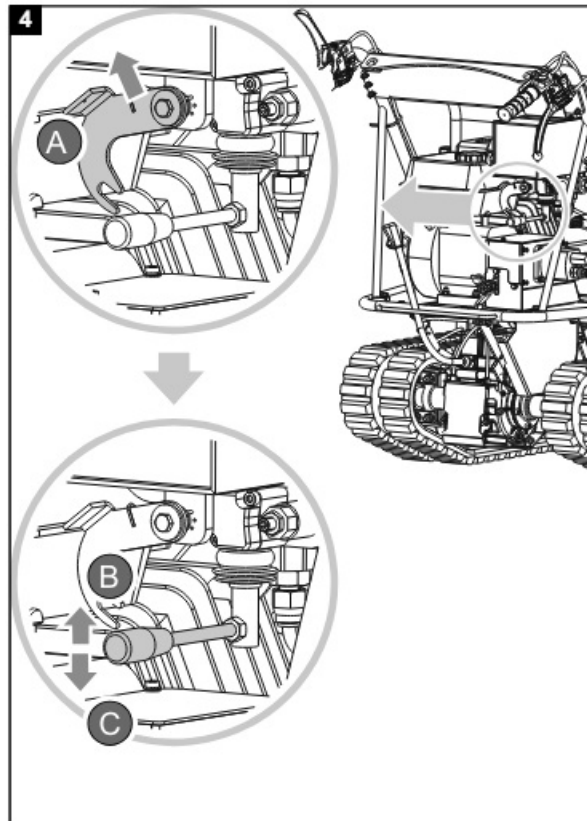
Left steering lever (5) and right steering lever (3) (Fig. 1)

- Operate the left steering lever (18) to steer to the left.
- Operate the right steering lever (3) to steer to the right.

Gear selector lever (7)

- The gear selector lever (7) controls the forward or reverse movement of the machine.
- It is possible to choose between 3 forward gears and one reverse gear using the gear selector lever (7).

Tilt lever (6) (Fig. 4)



Watch out for sudden changes in the centre of gravity when tipping out!
Before starting work, always check that the transport tray (4) is securely locked.

1. Pull the locking plate with the left hand in direction A and unlock the tilt lever (6).
2. Pull the tilt lever (6) the right hand in direction B to lift the transport tray. The hydraulic system works and uses the hydraulic cylinder to lift the transport tray (8). Once the transport tray (8) has been lifted to the required position, pull the dumper lever back to its original position and lock it securely with the locking plate, as otherwise, the transport tray (8) moves to the end position.
3. Pull the tilt lever (6) the right hand in direction C to lift the transport tray (8). The hydraulic system works and uses the hydraulic cylinder to lower the transport tray (8). Once the transport tray (8) has been lowered to the required position, pull the dumper tilt lever (6) back to its original position and lock it securely with the locking plate.

Release the operating lever in good time once the transport tray (8) is in the relevant end positions. Otherwise, you are risking of overloading the hydraulic system.

Starting the engine (Fig. 1, 2)

Follow the procedure below for cold starting:

1. Turn the choke lever (17) on the engine to the fully actuated position.
2. Set the throttle lever (1) on the top handle to the half-open position.
3. Switch the engine switch (19) on.
4. Pull the recoil starter cable (18) slowly several times so that the petrol flows into the carburettor. Then hold the starter handle and pull the cord out a little until you feel resistance. Then pull the cord out in one quick movement and let the cord wind up again slowly. Do not let the cord recoil. If necessary, pull the cord several times until the engine starts.
5. Let the engine warm up for a few seconds. Then gradually move the choke lever (17) to the "OPEN" position. Restarting an engine that is already warm from a previous operation does not normally require the use of the choke.
6. Set the throttle lever (1) on the top handle to the half open position.
7. Once the engine is warm, hold the starter handle and pull the cord out a little until you feel resistance. Then pull the cord out in one quick movement and let the cord wind up again slowly. Do not let the cord recoil.

Operation

• NOTE!

- Always release the clutch before starting.
- Always use the dumper with both hands.
- Change gear only when stationary.
- Never change gear on a slope.

1. After it has warmed up, pull the throttle (1) to increase the engine speed.
2. Select the required gear and operate the clutch lever (4) slowly. If the gear does not engage immediately, release the clutch lever slowly and try again. This sets the dumper in motion.
3. The dumper has steering levers on the handlebar, which makes steering very easy. Simply operate the relevant right or left steering lever to steer to the right or left. The sensitivity of the steering increases proportionally to the speed of the machine, and with the machine empty, only a slight pressure on the lever is needed to make a turn. However, when the machine is loaded, more pressure is required.

Attention: The dumper has a maximum capacity of 500 kg. However, it is recommended to assess the load and adjust it according to the ground on which the machine is used. It is therefore advisable to drive on such routes in low gear and with extra caution. Keep the machine in low gear for the entire route in these situations. Avoid sharp turns and frequent changes of direction while driving on the road, especially on rough, hard terrain full of sharp, uneven places with high friction.

Remember that even if the unit has rubber chains, you must be careful when working in adverse weather conditions (ice, heavy rain and snow) or on types of ground that may cause the dumper to become unstable. Please note that this is a chain vehicle that is subject to considerable pitching movements when driving over bumps, holes and steps. When the clutch lever (4) is released, the machine stops and brakes automatically. If you stop the machine on a steep slope, position a chock in front of one of the chains.

Idle speed

1. Set the throttle (1) to the "SLOW" position to reduce the load on the engine when not working.
2. Lowering the engine speed for idling the engine helps to extend the service life of the engine, save fuel and

reduce the noise level of the machine.

Switching off the engine

Simply switch the on/off switch (19) to the "OFF" switch to stop the engine in an emergency. Use the following procedure under normal conditions.

1. Move the throttle lever (1) to the "SLOW" position.
2. Let the engine idle for a minute or two.
3. Switch the on/off switch (19) to "ON".
4. Turn the fuel valve (16) to the "OFF" position.

Attention: Do not adjust the choke lever (17) to stop the engine. Misfiring or engine damage may occur.

Cleaning

Attention! Always shut the engine down and remove the spark plug connector before carrying out any cleaning work. We recommend that you clean the device directly after every use. Clean the device at regular intervals using a damp cloth and a little soft soap. Do not use any cleaning products or solvents; they could attack the plastic parts of the device. Make sure that no water can penetrate the device's interior.

Transport

WARNING! The danger of injury!

Unintended and unexpected start-up of the product may lead to injuries.

- After loading, switch off the engine and, after the engine has cooled down, remove the spark plug connector from the spark plug.
- The product can cause severe crushing injuries due to its own weight.

Allow the engine to cool down before transporting or loading to avoid burns and to prevent fire hazards. When transporting over longer distances, drain the fuel tank completely.

Secure the machine on the transport vehicle against rolling, slipping or tipping over and also lash down the dumper.

Storage

Store the device and its accessories in a dark, dry and frost-free place that is inaccessible to children. The optimum storage temperature lies between 5 and 30 °C. Cover the power tool to protect it from dust or moisture. Store the operating manual with the power tool.

Follow the steps below to store your machine if the dumper will not be used for a period longer than 30 days.

1. Empty the tank completely. Old fuel gums up and can clog the carburettor and impede fuel flow. It is best to use a hose to extract it into a suitable container.
2. Close the fuel valve, start the engine and let it run until it stops. This ensures that no fuel remains in the carburettor. This prevents resin deposits from forming in the carburettor, which could cause engine damage.
3. Drain the oil from the engine while it is still warm. Fill the engine with fresh oil of a suitable grade.
4. Use clean cloths to clean the outside of the machine and keep the ventilation slots free of obstructions. When cleaning plastic parts, do not use aggressive cleaning agents or petroleum-based cleaning agents. Chemicals can damage the plastics.
5. Check for loose or damaged parts. Repair or replace damaged parts and tighten loose bolts or nuts.

6. Store your machine on a level floor in a clean, dry building with good ventilation.

Do not store the machine with fuel in an unventilated area where it can reach fuel vapours, flames, sparks, pilot flames or other ignition sources.

Maintenance

Attention! Always shut the engine down and remove the spark plug connector before carrying out any maintenance work.

Proper maintenance and lubrication will help keep the machine in proper working condition.

Servicing

1. Check the general condition of the machine. Check for loose screws, misalignment or jamming of moving parts, part breakages and other conditions that could impair safe operation.
2. Remove all foreign objects and other materials that have been collected on the chain and on the unit. Clean the machine after every use. Then use a high-quality, low-viscosity machine oil to lubricate all moving parts.
3. Take care of the machine. Check for misalignment or jamming of moving parts, part breakages and other conditions that could impair operation of the machine. In the event of damage, have the machine repaired before use. Many accidents are caused by poorly maintained machines.
4. Keep the engine and silencer free of grass, leaves, excess grease or soot encrustation to reduce a fire hazard.
5. Never spray the machine with water or other liquids. Keep the handles dry, clean and free of contamination. Clean the machine after every use.
6. Observe the relevant laws and regulations for the disposal of fuel, oil, etc. to protect the environment.
7. Ensure that the machine is out of the reach of children when it is at a standstill and only allow instructed persons to operate the machine. The machine is dangerous in the hands of untrained operators

Never use a high-pressure cleaner to clean your machine. Water can penetrate sealed areas of the machine and the transmission housing and cause damage to spindles, gear wheels, bearings or the engine. The use of high-pressure cleaners shortens the service life and reduces the ease of maintenance.

Adjusting the clutch

The clutch play changes with the wear of the clutch. To enable proper operation, the clutch cable must be adjusted.

1. Set the clutch lever (4) to the original position using the adjuster.
2. To do this, tighten the counter nut with an open-end spanner size 10 mm (not included in the scope of delivery) until the clutch builds up the correct pressure on the belt (thumb pressure).

Adjusting the steering

If you have difficulty steering the dumper, readjust the steering levers (3) and (5) with the adjuster.

1. Loosen the counter nut with an open-ended spanner size 14 mm (not included in the scope of delivery) and unscrew the adjuster slightly. This removes the slack in the cable that may occur after first use or due to normal wear and tear.
2. Be careful not to unscrew the adjuster too far, as this may cause the problem of interruption of the drive.
3. After adjusting, tighten the counter nut again.

Lubrication

The transmission is lubricated and sealed in the factory.

Oil change (Fig. 3)

NOTE! Environmental damage!

Spilled oil can pollute the environment permanently. The liquid is highly toxic and can quickly lead to water pollution.

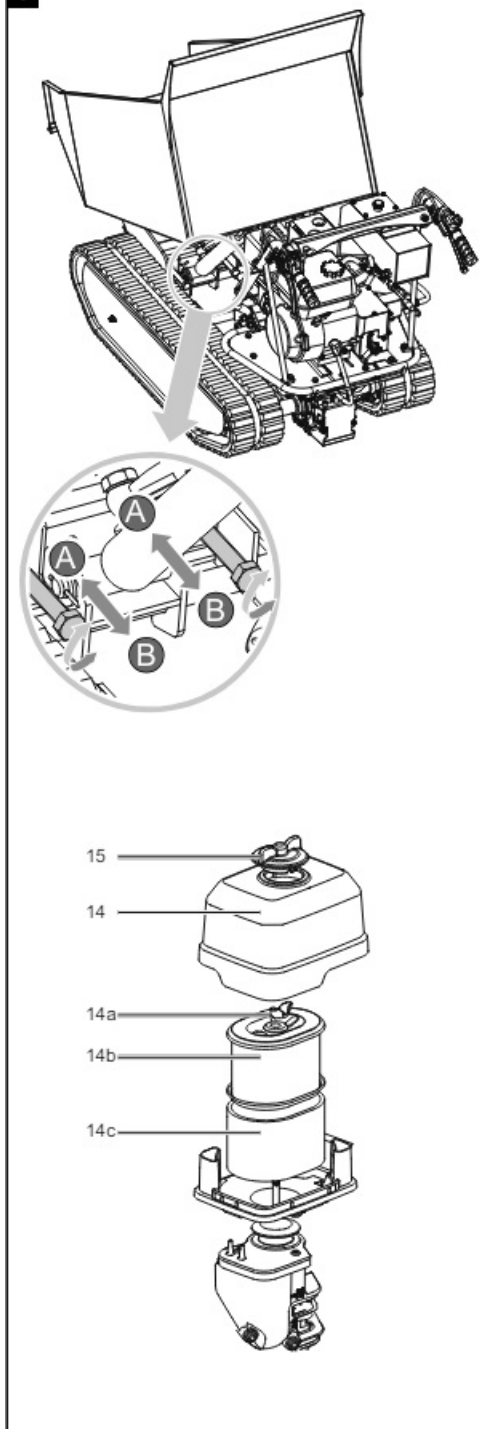
- Fill/empty oil only on level, paved surfaces.
- Use a filling nozzle or funnel.
- Collect drained oil in a suitable container.
- Wipe up spilled oil carefully immediately and dispose of the cloth according to local regulations.
- Dispose of oil as per local regulations.

The engine oil change should be carried out while the motor is at operating temperature and switched off.

Use only engine oil (SAE 10W-30 or SAE 10W-40).

1. Place the dumper on a level, even surface.
2. Place a suitable collection container under the oil drain screw (22).
3. Use an open-end spanner size 10 mm (not included in the scope of delivery) to open the oil drain screw (22) and drain the engine oil.
4. After you have drained the engine oil completely, tighten the oil drain screw (22) again.
5. Now unscrew the oil filler plug with oil dipstick (23) anti-clockwise.
6. Fill up with fresh engine oil and check the oil level.
7. Then screw the oil filler plug with oil dipstick (23) back clockwise.

Air filter maintenance (Fig. 5)



DANGER! Risk of fire and explosion!

If not cleaned correctly, fuel may ignite and even explode. This can lead to severe burns or death.

- Clean the air filter only by knocking out or blowing out with compressed air.
- Never clean the air filter with petrol or flammable solvents.

NOTE! Risk of damage!

Operating the engine without the filter element in place can cause engine damage.

- Never run the engine without the air filter element in place.

A fouled air filter insert diminishes the engine output due to reduced air supply to the carburettor. Regular inspection is therefore essential.

The air filter should be checked every 10 operating hours and cleaned as required.

1. Unscrew the wing nut (15) and remove the air filter cover (14).
2. Check the air filter cover (14) for holes or cracks. Replace any damaged insert.
3. Unscrew the inner wing nut (14a) and remove the filter insert.
4. Wipe off dirt on the inside of the filter housing with a clean moist cloth. Make sure that no dirt enters the opening. Set the air filter cover (14) on the filter housing for the duration of the filter cleaning process.
5. Remove the filter insert (14c). Check it for damage and replace it if necessary.
6. Blow out the foam filter (14c) thoroughly with compressed air.
7. Remove the paper filter (14b). Check it for damage and replace it if necessary.
8. Blow out the paper filter (14b) from the inside to the outside with compressed air. Do not rub dirt off the paper filter (14b). This can result in damage.
9. Replace the clean filter insert (foam filter 17c and paper filter 17b) and tighten the inner wing nut (14a).
10. Put on the air filter cover (14) and secure it with the wing nut (15).

ATTENTION: Never run the engine without an air filter insert or with a damaged air filter insert. This would allow dirt to enter the engine, which would damage the engine. The manufacturer warranty is then invalidated.

Clean/replace the spark plug

ATTENTION: Only replace the spark plug when the engine is cold!

Check the spark plug for dirt and grime after 10 operating hours and if necessary, clean it with a copper wire brush.

Thereafter, replace the spark plug every 50 operating hours or if necessary.

1. Disconnect the spark plug cable and remove any dirt in the spark plug area.
2. Unscrew the spark plug (13) with the supplied spark plug wrench and check this.
3. Check the insulation. Replace the spark plug (13) if it is damaged, e.g. cracked or fragmented.
4. Clean the spark plug electrodes with a wire brush.
5. Check the electrode gap and adjust it using a feeler gauge. To make sure that the engine remains efficient, the spark plug (13) must have the right electrode gap (0.7-0.8 mm).
6. Screw the spark plug (13) back in by hand and tighten it about 1/4 turn with the spark plug wrench.
7. Fit the spark plug cable onto the spark plug (13).

ATTENTION! A loose spark plug can overheat and cause damage to the engine. If you tighten the spark plug too much, the thread in the cylinder head may be damaged.

Pump out petrol with a petrol extraction pump

The petrol must be drained in the event of storage over a longer period of time or for transport.

1. Close the fuel shut-off valve (16).
2. Hold a collection container under the hose of the petrol extraction pump (not included in the scope of delivery).
3. Unscrew and remove the tank cover (20).
4. Remove the fuel filter insert.
5. Push the hose of the petrol extraction pump into the fuel tank and pump out the petrol completely using the petrol extraction pump.
6. Reinsert the fuel filter insert.
7. Retighten the tank cover (20).

Tensioning the chain (fig. 5)

The chains tend to slacken during operation. When operating with loose chains, these tend to slip over the drive wheel, whereby these jump into their housing or work in a precarious state resulting in wear on the housing.

Proceed as follows to check the tension on the chains.

1. Always place the machine on a level surface with a compacted base, preferably on asphalt or flagstones.
2. Lift the machine up and support it on blocks or stands with a suitable bearing capacity for the weight of the machine so that the chains are around 100 mm above the ground.
3. Measure the chain's centre line compared to the horizontal line. The value must not deviate by more than 10 – 15 mm.

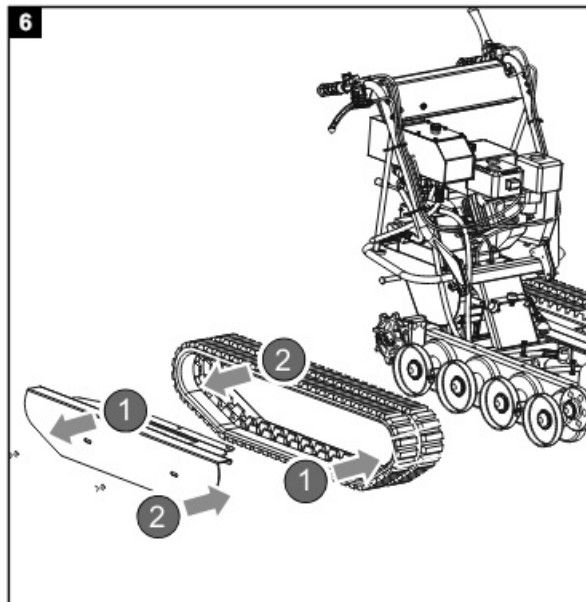
Proceed as follows if the value is higher.

1. Use the tilt lever to tilt the transport tray and support it on blocks or stands with a suitable bearing capacity for the weight of the transport tray.
2. Undo counter nut A.
3. Tighten screw B until the correct tension is reached.
4. Secure screw B by tightening counter nut A.
5. Return the transport tray to its original position.

Adjusting the chains and the brakes is linked so therefore proceed with caution as tensioning the chains too much loses the braking effect completely.

If the set screw does not allow any further adjustments, the chains may have to be replaced.

Replacing the chains (Fig. 6)



Check the condition of the chains at regular intervals. If a chain is cracked or frayed, it must be replaced as soon as possible.

1. Loosen the chains (see 14.9.).
2. Replace the chains as shown in the illustration.
3. Correctly tension the chains (see 14.9.).

When removing or installing chains, ensure that your fingers do not get caught between the belt and the pulley.

Important note in the case of repairs:

For return delivery of the device for repair, please ensure for safety reasons that it is free of oil and fuel when it is sent to the service centre.

Service Information

With this product, it is necessary to note that the following parts are subject to natural or usage-related wear, or that the following parts are required as consumables.

Wearing parts*: Spark plug, belt, chain * may not be included in the scope of delivery!

Spare parts and accessories can be obtained from our Service Centre. To do this, scan the QR code on the front page.

Disposal and recycling**Notes for packaging**

The packaging materials are recyclable. Please dispose of packaging in an environmentally friendly manner. You can find out how to dispose of the disused device from your local authority or city administration.

Fuels and oils

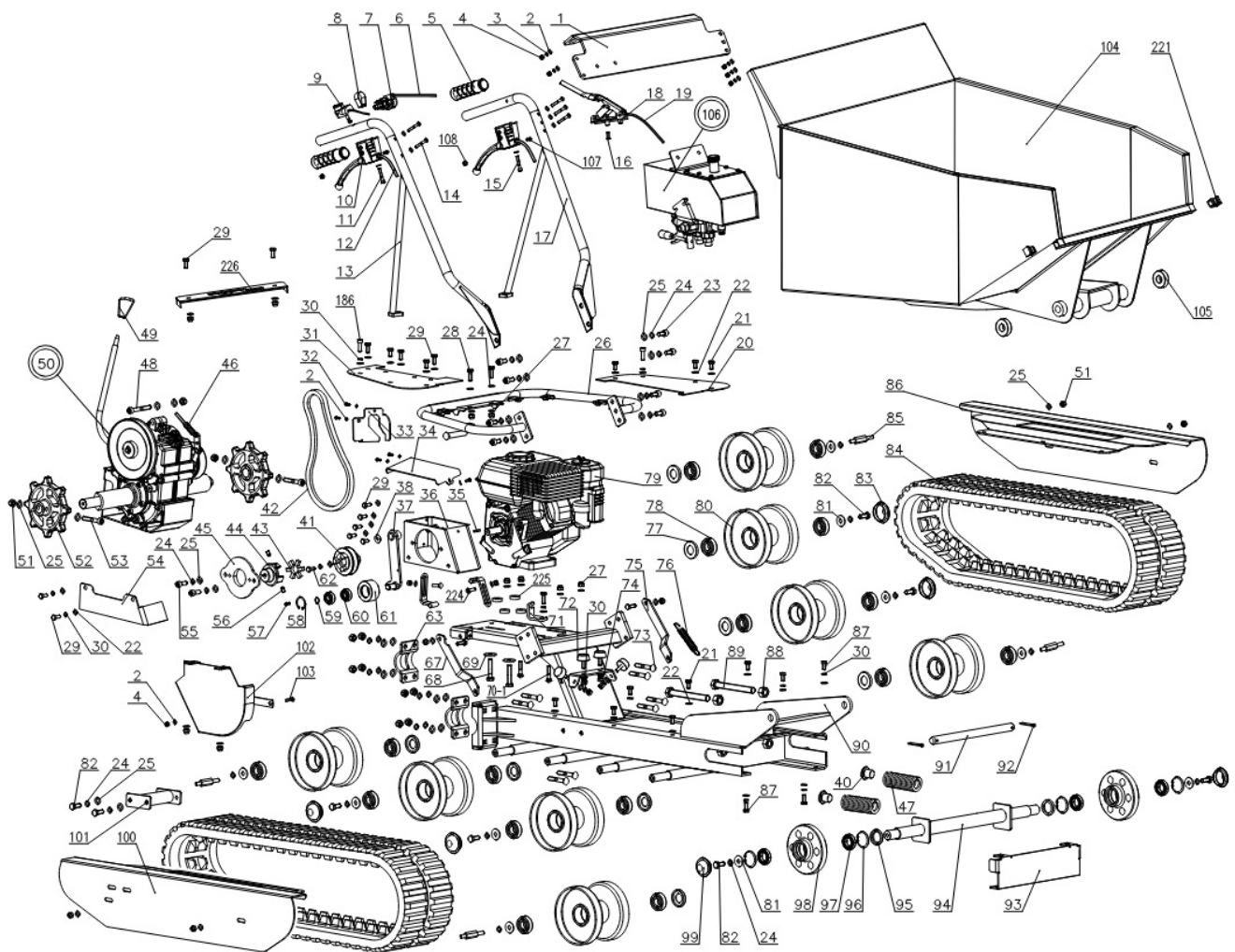
- Before disposing of the unit, the fuel tank and the engine oil tank must be emptied!
- Fuel and engine oil do not belong in household waste or drains, but must be collected or disposed of separately!
- Empty oil and fuel tanks must be disposed of in an environmentally friendly manner.

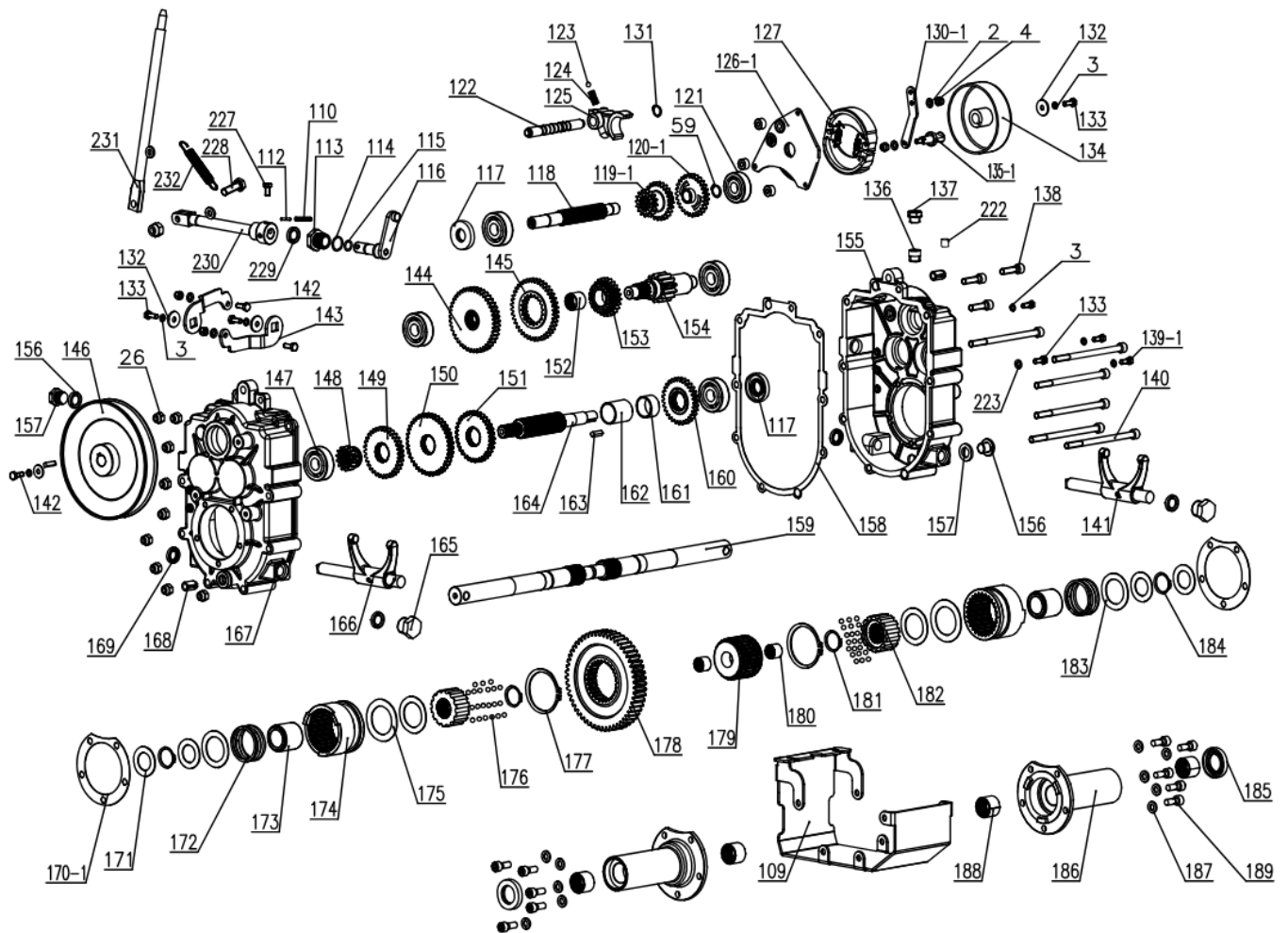
Troubleshooting

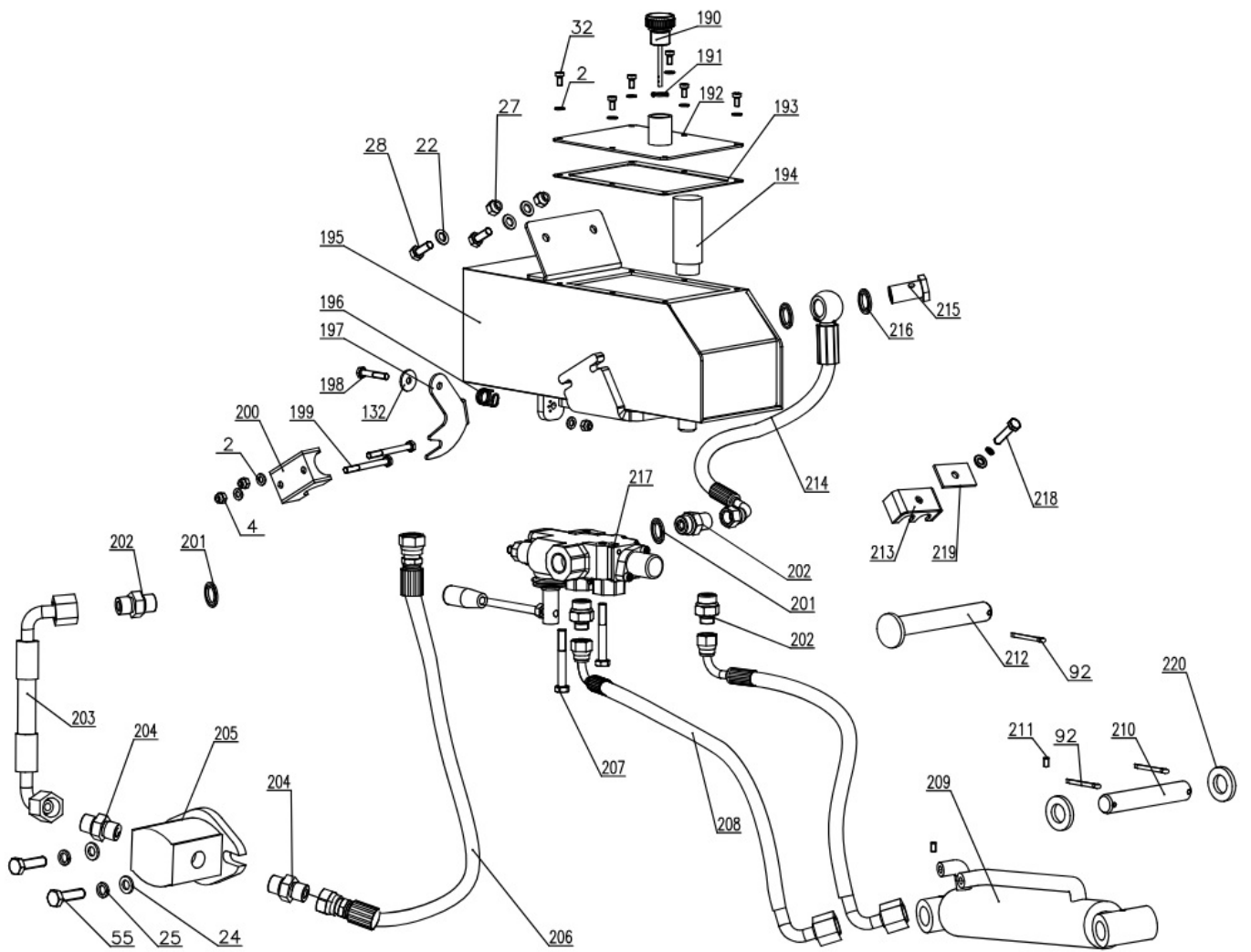
The following table shows fault symptoms and describes remedial measures in the event of your machine failing to work properly. If you cannot localise and rectify the problem with this, please contact your service workshop.

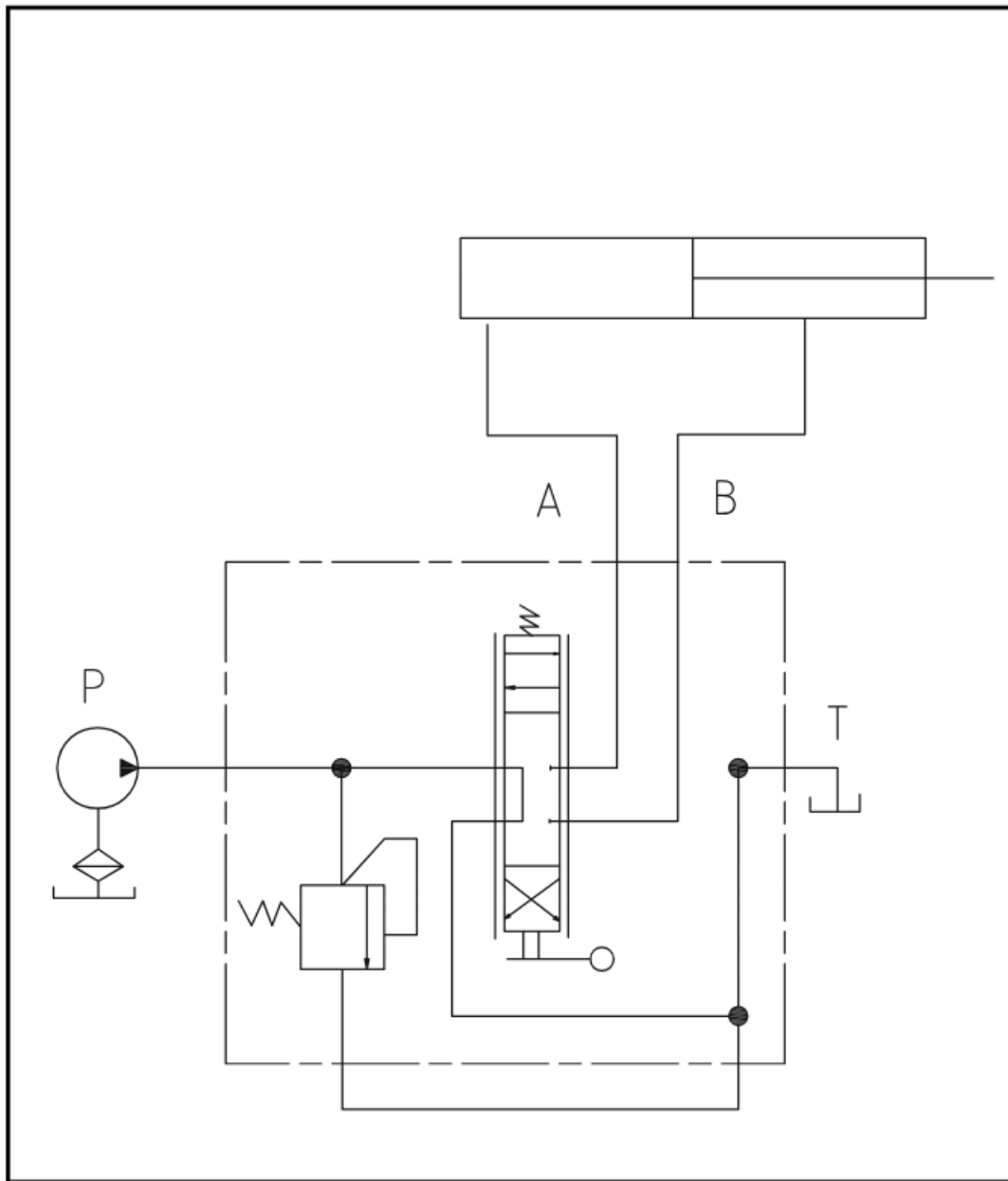
Fault	Possible cause	Remedy
Engine does not start.	Spark plug connector unplugged.	Re-connect the spark plug cable to the spark plug.
	No fuel or old fuel.	Fill with clean, fresh petrol.
	Choke not in open position.	The throttle must be positioned in the choke position during cold starting.
	Fuel line clogged.	Clean the fuel line.
	Contaminated spark plug.	Clean, set gap or replace.
	Engine flooded.	Wait a few minutes before restarting, but do not allow the engine to prime.
Engine runs erratically.	Spark plug cable loose.	Connect and fasten the spark plug cable.
	Engine runs with CHOKE.	Set the choker-arm to OFF.
	Fuel line clogged or old fuel.	Clean the fuel line. Fill the tank with clean, fresh petrol.
	Ventilation blocked.	Clean the air filter.
	Water or contamination in the fuel system.	Empty the tank. Fill the tank with fresh fuel.
	Contaminated air filter.	Clean or replace the air filter.
	Incorrect carburettor setting.	Contact the service department.
Motor is overheated.	Engine oil level low.	Fill crankcase with correct oil.
	Contaminated air filter.	Clean the air filter.
	Airflow restricted.	Remove and clean the housing.
	Carburettor not adjusted correctly.	Contact the service department.
One of the two chains is blocked.	Foreign objects have got jammed between the chain and the frame.	Remove the foreign objects.
The machine does not move when the engine is running.	The gear was not chosen correctly.	Make sure that the gear lever is not between two gears.
	The drive chains are not tensioned sufficiently.	Tension the chains.

EXPLODE VIEW









EU Declaration of Conformity

Scheppach GmbH, Günzburger Str. 69, D-89335 Ichenhausen

DE	erklärt folgende Konformität gemäß EU-Richtlinie und Normen für den Artikel	CZ	prohlašuje následující shodu podle směrnice EU a norem pro výrobek
GB	hereby declares the following conformity under the EU Directive and standards for the following article	SK	prehlasuje nasledujúcu zhodu podľa smernice EU a noriem pre výrobok
FR	déclare la conformité suivante selon la directive UE et les normes pour l'article	HU	az EU-irányelv és a vonatkozó szabványok szerinti következo megfeleloségi nyilatkozatot teszi a termékre
IT	dichiara la seguente conformità secondo le direttive e le normative UE per l'articolo		

Marke / Brand / Marque:

Art.-Bezeichnung:

Article name:

Nom d'article:

Art.-Nr. / Art. no.: / N° d'ident.:

SCHEPPACH**RAUPENDUMPER****TRACK DUMPER****BENNE BASCULANTE MOTORISÉE****5908801903****- DP5000****- DP5000****- DP5000**

<input type="checkbox"/> 2014/29/EU	<input type="checkbox"/> 2004/22/EG	<input type="checkbox"/> 89/686/EWG_96/58/EG	<input checked="" type="checkbox"/> 2000/14/EG_2005/88/EG
<input type="checkbox"/> 2014/35/EU	<input type="checkbox"/> 2014/68/EU	<input type="checkbox"/> 90/396/EWG	<input type="checkbox"/> Annex V
<input checked="" type="checkbox"/> 2014/30/EU	<input checked="" type="checkbox"/> 2011/65/EU*		<input checked="" type="checkbox"/> Annex VI Noise: measured L_{WA} = 98,4 dB; guaranteed L_{WA} = 101 dB P = 4,1 kW Notified Body: TÜV SÜD Industrie Service GmbH, Westendstrasse 199, D-80686 München Notified Body No.: 0036
<input checked="" type="checkbox"/> 2006/42/EG			<input checked="" type="checkbox"/> 2016/1628/EU Emission. No: e13*2016/1628*2017/656SRA1/P*0076*00
Annex IV Notified Body: Notified Body No.: Certificate No.:			

Standard references:**EN 55012:2007+A1; EN 61000-6-1:2007; EN 474-6; ISO 4413; EN ISO 12100:2010**

Die alleinige Verantwortung für die Ausstellung dieser Konformitätserklärung trägt der Hersteller.

This declaration of conformity is issued under the sole responsibility of the manufacturer.

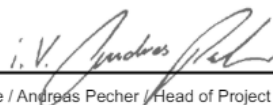
Le fabricant assume seul la responsabilité d'établir la présente déclaration de conformité.

* Der oben beschriebene Gegenstand der Erklärung erfüllt die Vorschriften der Richtlinie 2011/65/EU des Europäischen Parlaments und des Rates vom 8. Juni 2011 zur Beschränkung der Verwendung bestimmter gefährlicher Stoffe in Elektro- und Elektronikgeräten.

The object of the declaration described above fulfils the regulations of the directive 2011/65/EU of the European Parliament and Council from 8th June 2011, on the restriction of the use of certain hazardous substances in electrical and electronic equipment.

L'appareil décrit ci-dessus dans la déclaration est conforme aux réglementations de la directive 2011/65/EU du Parlement Européen et du Conseil du 8 juin 2011 visant à limiter l'utilisation de substances dangereuses dans la fabrication des appareils électriques et électroniques.

Ichenhausen, 15.11.2023



Signature / Andreas Pecher / Head of Project Management**First CE: 2018****Subject to change without notice****Documents registrar: Viktor Härtl**

Günzburger Str. 69, D-89335 Ichenhausen

Warranty

Apparent defects must be notified within 8 days from the receipt of the goods. Otherwise, the buyer's rights of claim due to such defects are invalidated. We guarantee for our machines in case of proper treatment for the time of the statutory warranty period from delivery in such a way that we replace any machine part free of charge which provably becomes unusable due to faulty material or defects of fabrication within such period of time. With respect to parts not manufactured by us we only warrant insofar as we are entitled to warranty claims against the upstream suppliers. The costs for the installation of the new parts shall be borne by the buyer. The cancellation of sale or the reduction of purchase price as well as any other claims for damages shall be excluded.

Documents / Resources

	<p>scheppach DP5000 Track Dumper [pdf] Instruction Manual DP5000 Track Dumper, Track Dumper, Dumper</p>
---	---

References

- [🔗 scheppach | scheppach](#)
- [🔗 Kontakt & Service | scheppach | scheppach](#)
- [User Manual](#)

Manuals+. [Privacy Policy](#)

This website is an independent publication and is neither affiliated with nor endorsed by any of the trademark owners. The "Bluetooth®" word mark and logos are registered trademarks owned by Bluetooth SIG, Inc. The "Wi-Fi®" word mark and logos are registered trademarks owned by the Wi-Fi Alliance. Any use of these marks on this website does not imply any affiliation with or endorsement.