



scheppach DH1000PLUS Combined Hammer User Manual

[Home](#) » [Scheppach](#) » **scheppach DH1000PLUS Combined Hammer User Manual** 



DH1000PLUS Combined Hammer User Manual

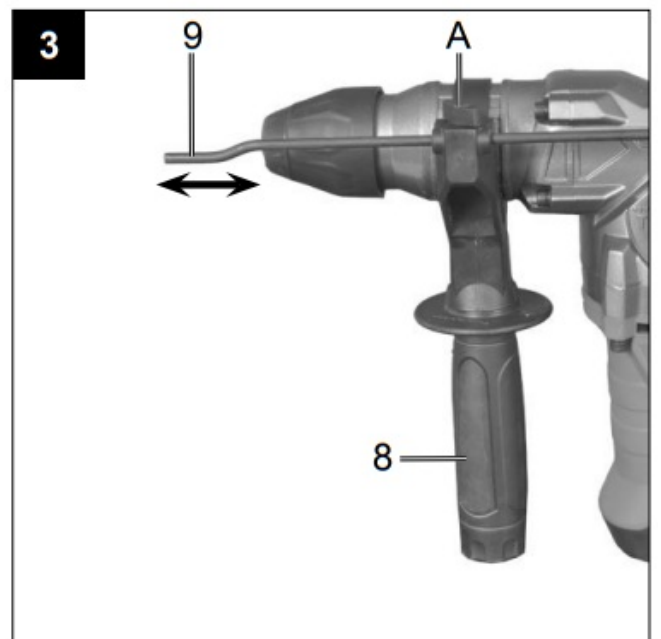
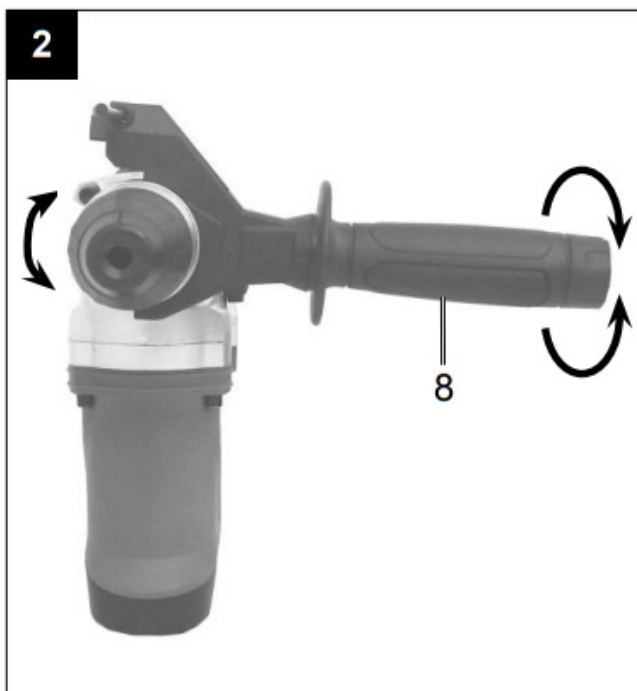
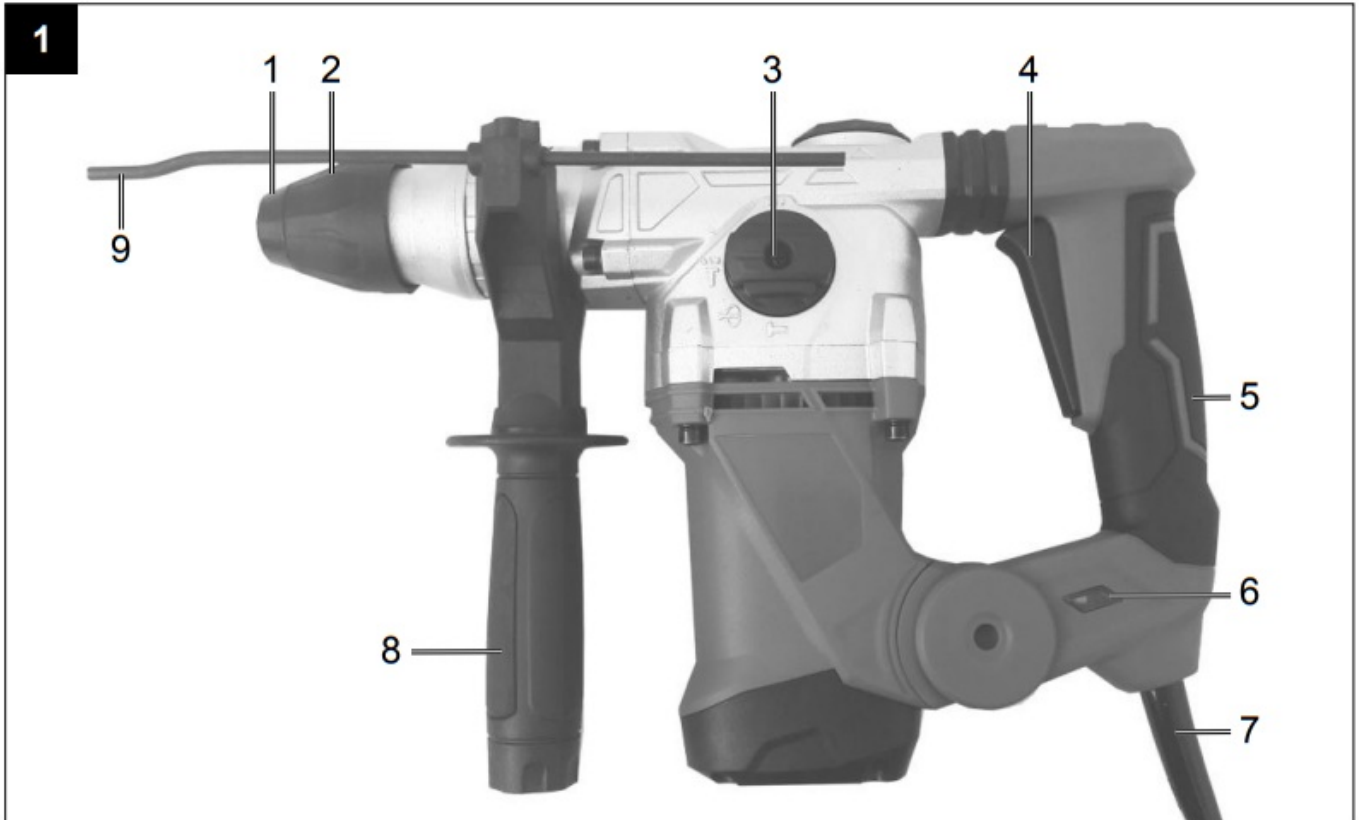


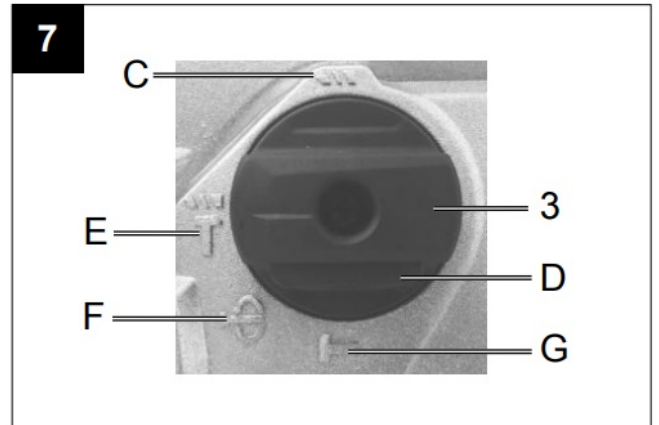
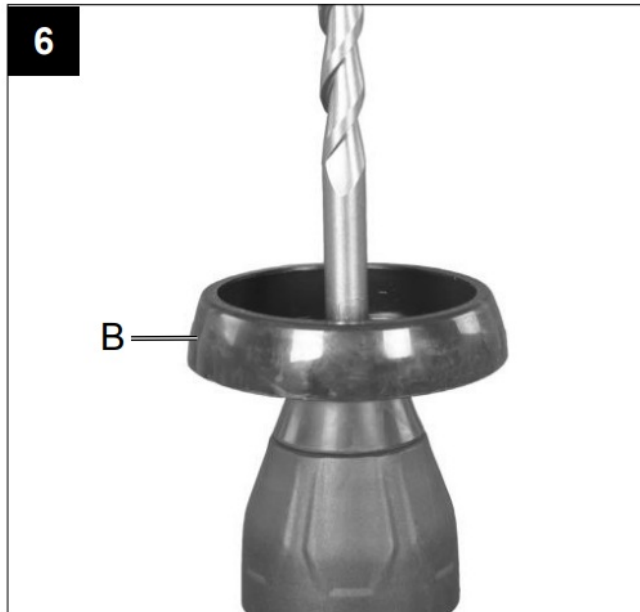
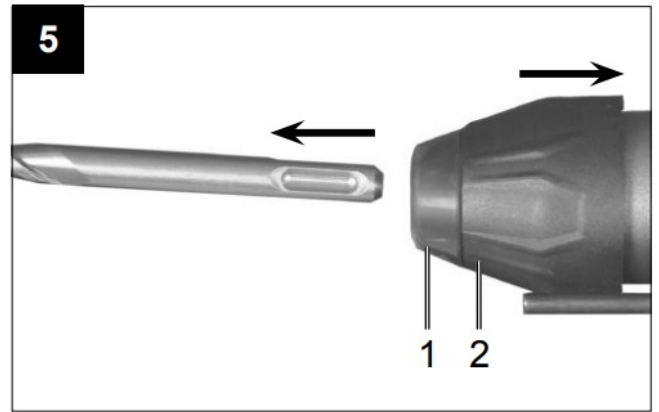
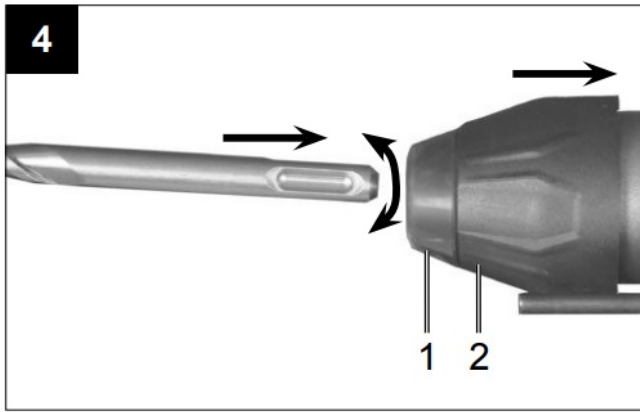
**Art. № 5908205934
Ausgabe. 5908205851
Rev.№ 03.07.2017
DH1000PLUS
Hammer drill**

Translation of Original Operating Manual

Only for EU countries.

Do not dispose of electric tools together with household waste material! In observance of European directive 2012/19/EU on waste electrical and electronic equipment and its implementation in accordance with national law, electric tools that have reached the end of their life must be collected separately and returned to an





Explanation of the symbols on the equipment

	Caution – Read the operating instructions to reduce the risk of injury
	Wear safety goggles!
	Wear ear-muffs!
	Wear a breathing mask!
	protection class II

Contents

- 1 Introduction
- 2 Safety information
- 3 Technical data
- 4 Operation
- 5 Maintenance
- 6 Documents / Resources
- 6.1 References
- 7 Related Posts

Introduction

MANUFACTURER: scheppach Fabrikation von Holzbearbeitungsmaschine GmbH Günzburger Straße 69 D-89335 Ichenhausen

DEAR CUSTOMER, We hope your new tool brings you much enjoyment and success.

NOTE: According to the applicable product liability laws, the manufacturer of the device does not assume liability for damages to the product or damages caused by the product that occurs due to:

- Improper handling,
- Non-compliance of the operating instructions,
- Repairs by third parties, not by authorized service technicians,
- Installation and replacement of non-original spare parts,
- Application other than specified,
- A breakdown of the electrical system that occurs due to the non-compliance of the electric regulations and VDE regulations 0100, DIN 57113 / VDE0113.

WE RECOMMEND:

Read through the complete text in the operating instructions before installing and commissioning the device. The operating instructions are intended to help the user to become familiar with the machine and take advantage of its application possibilities in accordance with the recommendations. The operating instructions contain important information on how to operate the machine safely, professionally and economically, how to avoid danger, and costly repairs, reduce downtimes, and how increase the reliability and service life of the machine. In addition to the safety regulations in the operating instructions, you have to meet the applicable regulations that apply to the operation of the machine in your country. Keep the operating instructions package with the machine at all times and store it in a plastic cover to protect it from dirt and moisture. Read the instruction manual each time before operating the machine and carefully follow its information. The machine can only be operated by persons who were instructed concerning the operation of the machine and who are informed about the associated dangers. The minimum age requirement must be complied with. In addition to the safety requirements in these operating instructions and your country's applicable regulations, you should observe the generally recognized technical rules concerning the operation of woodworking machines.

Device Description (Fig.1)

1. Dust guard
2. Locking sleeve
3. Selector switch for hammer drilling/chiseling
4. ON/OFF switch
5. Handle
6. Status indicator

7. Power cable
8. Additional handle
9. Depth stop

Unpacking

- Open the packaging and remove the device carefully.
- Remove the packaging material as well as the packaging and transport bracing (if available).
- Check that the delivery is complete.
- Check the device and accessory parts for transport damage.
- If possible, store the packaging until the warranty period has expired.

ATTENTION

The device and packaging materials are not toys! Children must not be allowed to play with plastic bags, film, and small parts! There is a risk of swallowing and suffocation!

Proper use

The tool is designed for drilling with hammer action in concrete, rock, and brick, as well as for chiseling work, always using the respective correct drill or chisel bit.

The equipment is to be used only for its prescribed purpose. Any other use is deemed to be a case of misuse. The user/operator and not the manufacturer will be liable for any damage or injuries of any kind caused as a result of this.

Please note that our equipment has not been designed for use in commercial, trade or industrial applications. Our warranty will be voided if the machine is used in commercial, trade or industrial businesses or for equivalent purposes.

Safety information

General safety instructions for electric tools



CAUTION: Read all safety regulations and instructions. Any failures made in following the safety regulations and instructions may result in an electric shock, fire, and/or serious injury.

Keep all safety regulations and instructions in a safe place for future use.

The term “electric tool” used in the safety instructions refers to electric tools operated from the mains power supply (with a power cable) and to battery-operated electric tools (without a power cable).

Workplace safety

- **Keep your work area clean and well illuminated.** Untidy or unlit work areas can result in accidents.
- Do not operate the electric tool in an environment meant where there is a risk of explosions and where there are inflammable liquids, gases, or dust. Electric tools produce sparks that could set the dust or vapors alight.
- Keep the electric tool out of the reach of children and other persons. If there is a distraction, you may lose control of the appliance.

Electrical safety

- The connector plug from this electric tool must fit into the socket. The plug should never be altered in any way. Never use adapter plugs together with earthed electric tools. Unaltered plugs and correct sockets reduce the risk of an electric shock.
- Avoid bodily contact with earthed surfaces such as pipes, heating, ovens, and fridges. The risk of electric

shock is increased if your body is earthed.

- Keep the tool out of the rain and away from moisture. The ingress of water into an electric tool increases the risk of an electric shock.
- Do not use the cable to carry the electric tool, hang it up or pull it out of the socket. Keep the cable away from heat, oil, sharp edges, and moving parts of the appliance. Damaged or entangled cables increase the risk of an electric shock.
- If you are working outdoors with an electric tool, only use extension cables that are designed specifically for this purpose. Using specially designed outdoor extension cables, the risk of electric shock is reduced.
- If operation of the electric tool in a damp environment can not be avoided, use a earth leakage circuit-breaker. The earth-leakage circuit-breaker reduces the risk of an electric shock.

Safety of persons

- Be careful, watch what you are doing, and use an electric tool sensibly. Do not use the tool if you are tired or under the influence of drugs, alcohol, or medication. A moment of inattention when using the electric tool can result in serious injuries.
- Wear personal protection equipment and always wear safety goggles. Wearing personal protection (such as dust masks, non-slip safety shoes, safety helmets or ear protection, depending upon the type and use of the electric tool) reduces the risk of injury.
- Make sure that the appliance cannot start up accidentally. Ensure that the electric tool is switched off before you connect it to the power supply and/or insert the battery, or pick up or carry the tool. If your finger is on the switch whilst carrying the electric tool or if you connect the appliance to the mains when it is switched on, this can lead to accidents.
- Remove keys and wrenches before switching on the electric tool. A tool or key which comes into contact with rotating parts of the appliance can lead to injuries.
- Avoid abnormal working postures. Make sure you stand squarely and keep your balance at all times. In this way, you can control the electric tool better in unexpected circumstances.
- Wear suitable work clothes. Do not wear loose clothing or jewelry. Keep hair, clothes, and gloves away from moving parts. Loose clothing, jewelry or long hair can get trapped in moving parts.
- If vacuuming devices and draining devices can be fitted, make sure that these are correctly attached and correctly used. The use of a dust extraction system can reduce the danger posed by dust.

Usage and treatment of the electric tool

- Do not overload the appliance. Use the correct tool for your work. You will be able to work better and more safely within the given performance boundaries.
- Do not use an electric tool with a defective switch. An electric tool that cannot be switched on or off is dangerous and must be repaired.
- Pull the plug out of the socket and/or remove the battery before making any adjustments to the appliance, changing accessories, or putting the appliance down. This safety measure prevents starting the electric tool unintentionally.
- Keep unused electric tools out of the reach of children. Do not allow people who are not familiar with the appliance or who have not read these instructions to use the appliance. Electric tools are dangerous if they are

used by inexperienced people.

- Clean your electric tool carefully. Check whether moving parts are functioning properly and not jamming and whether parts are broken or damaged enough that the functioning of this electric tool is affected. Have damaged parts been repaired before using the appliance? Many accidents are caused by badly maintained electric tools.
- Keep your cutting tools sharp and clean. Carefully maintained cutting tools with sharp cutting edges will jam less and are easier to control.
- Make sure to use electric tools, accessories, attachments, etc. in accordance with these instructions. Take the conditions in your work area and the job in hand into account. Using electric tools for any purpose other than the one for which they are intended can lead to dangerous situations.

Service

Has your electric tool been repaired only by trained personnel using only genuine spare parts? This will ensure that your electric tool remains safe to use.

Safety Information for hammer

- Wears ear protection. The impact of noise can cause damage to hearing.
- Use the additional handles supplied with the tool. Losing control of the tool can cause injuries.
- Hold the equipment by the insulated handles when carrying out work during which the plug-in tool could strike concealed power cables or its own mains lead. Contact with a live cable can also make the metal parts of the equipment live and will cause an electric shock.

Do not lose these safety instructions

Residual risks

Even if you use this electric power tool in accordance with instructions, certain residual risks cannot be ruled out. The following hazards may arise in connection with the equipment's construction and layout:

- Lung damage if no suitable protective dust mask is used.
- Damage to hearing if no suitable ear protection is used.
- Health damage is caused by hand-arm vibrations if the equipment is used over a prolonged period or is not properly guided and maintained.

Technical data

Mains voltage Power input Idling speed Blow rate Drilling capacity in concrete/stone (max.) Protection class
Weight

Mains voltage	220-240 V~ 50 Hz
Power input	900 W
Idling speed	0-850 min-1
Blow rate	4500 bpm
Drilling capacity in concrete/stone (max.)	28 mm
Protection class	II
Weight	4,2 kg

Danger!

Sound and vibration

Sound and vibration values were measured in accordance with EN 60745.

LpA sound pressure level	90.9 dB(A)
KpA uncertainty	3 dB(A)
LWA sound power level	101.9 dB(A)
KWA uncertainty	3 dB(A)

Wear ear-muffs.

The impact of noise can cause damage to hearing.

Total vibration values (vector sum of three directions) determined in accordance with EN 60745.

Main handle

Hammer drilling in Concrete: $a_h(\text{HD}) = 13.59 \text{ m/s}^2$, $K = 1.5 \text{ m/s}^2$

Additional handle

Hammer drilling in Concrete: $a_h(\text{HD}) = 11.265 \text{ m/s}^2$, $K = 1.5 \text{ m/s}^2$

Main handle

Chiselling: $a_h(\text{CHEq}) = 14.3 \text{ m/s}^2$, $K = 1.5 \text{ m/s}^2$

Additional handle

Chiselling: $a_h(\text{CHEq}) = 14.51 \text{ m/s}^2$, $K = 1.5 \text{ m/s}^2$

The specified vibration value was established in accordance with a standardized testing method. It may change according to how the electric equipment is used and may exceed the specified value in exceptional circumstances.

The specified vibration value can be used to compare the equipment with other electric power tools.

The specified vibration value can be used for the initial assessment of a harmful effect.

Keep the noise emissions and vibrations to a minimum.

- Only use appliances that are in perfect working order.
- Service and clean the appliance regularly.
- Adapt your working style to suit the appliance.
- Do not overload the appliance
- Have the appliance serviced whenever necessary.
- Switch the appliance off when it is not in use.
- Wear protective gloves.

Before starting the equipment

Before you connect the equipment to the mains supply make sure that the data on the rating plate are identical to the mains data.

Warning! Always pull the power plug before making adjustments to the equipment.

Check the drilling point for concealed electrical cables, gas, and water pipes using a cable/pipe detector.

Additional handle (Fig. 2 Item 8)

For safety reasons, you must only use the hammer drill with the additional handle. The additional handle (8) enables you to achieve better stability whilst using the hammer drill. The machine must not be used without the additional handle (8) for safety reasons. The additional handle (8) is secured to the hammer drill by a clamp. Turning the handle anticlockwise (looking from the handle) will release the clamp. Turning the handle clockwise will tighten the clamp. First, release the additional handle clamp. You can then swing the additional handle (8) into the most comfortable working position for you. Now turn the additional handle in the opposite direction again until the additional handle is secure.

Tiefenanschlag (Fig. 3 Item.9)

The depth stop (9) is held in place with the locking screw (A) on the additional handle (8) by means of a clamp. ·

- Undo the locking screw (A) and fit the depth stop (9).
- Set the depth stop (9) to the same level as the drill bit.
- Pull the depth stop (9) back by the required drilling depth.
- Retighten the locking screw (A).
- Now drill the hole until the depth stop (9) touches the workpiece.

Tool insertion (Fig. 4)

- Clean the tool before insertion and apply a thin coating of drill bit grease to the shaft of the tool.
- Pull back and hold the locking sleeve (2).
- Insert the dust-free tool into the tool mounting as far as it will go whilst turning it.
- The tool will lock itself.
- Check that it is properly secure by pulling the tool.
- Tool removal (Fig. 5) Pull back and hold the locking sleeve (2) and remove the tool.

Dust collection device (Fig. 6)

Slide the dust collection device (B) over the drill bit before carrying out any hammer drilling vertically above your head.

Operation

Danger To prevent all danger, the machine must only be held using the two handles (5/8). Otherwise, there may be a risk of suffering an electric shock if you drill into cables.

Status indicator (Fig.1) The status indicator (6) lights up when the power plug is connected.

Switching On and Off (Fig.1) To switch on: Press and hold the operating switch (4). To switch off: Let go of the operating switch (4)

Button hammer drilling/chiseling (Fig. 7)

- For hammer drilling, press the button (D) on the rotary switch (3) and simultaneously turn the rotary switch (3) to position E.
- For chiseling, press the button (D) on the rotary switch (3) and simultaneously turn the rotary switch (3) to position F. In switch position F the chisel is not locked.
- For chiseling, press the button (D) on the rotary switch (3) and simultaneously turn the rotary switch (3) to position G. The chisel is locked in position G.

Notice! Only low pressure is required for hammer drilling. Excessive pressure will exert an unnecessary force on the motor. Check the drill bits at regular intervals. Sharpen or replace blunt drill bits.

Maintenance



Warning! Prior to any adjustment, maintenance or service work disconnect the mains power plug!

General maintenance measures

- Keep all safety devices, air vents, and the motor housing free of dirt and dust as far as possible. Wipe the equipment with a clean cloth or blow it down with compressed air at low pressure.
- We recommend that you clean the equipment immediately after you use it.
- Clean the equipment regularly with a damp cloth and some soft soap. Do not use cleaning agents or solvents; these may be aggressive to the plastic parts in the equipment. Ensure that no water can get into the interior of the equipment.

Brush inspection

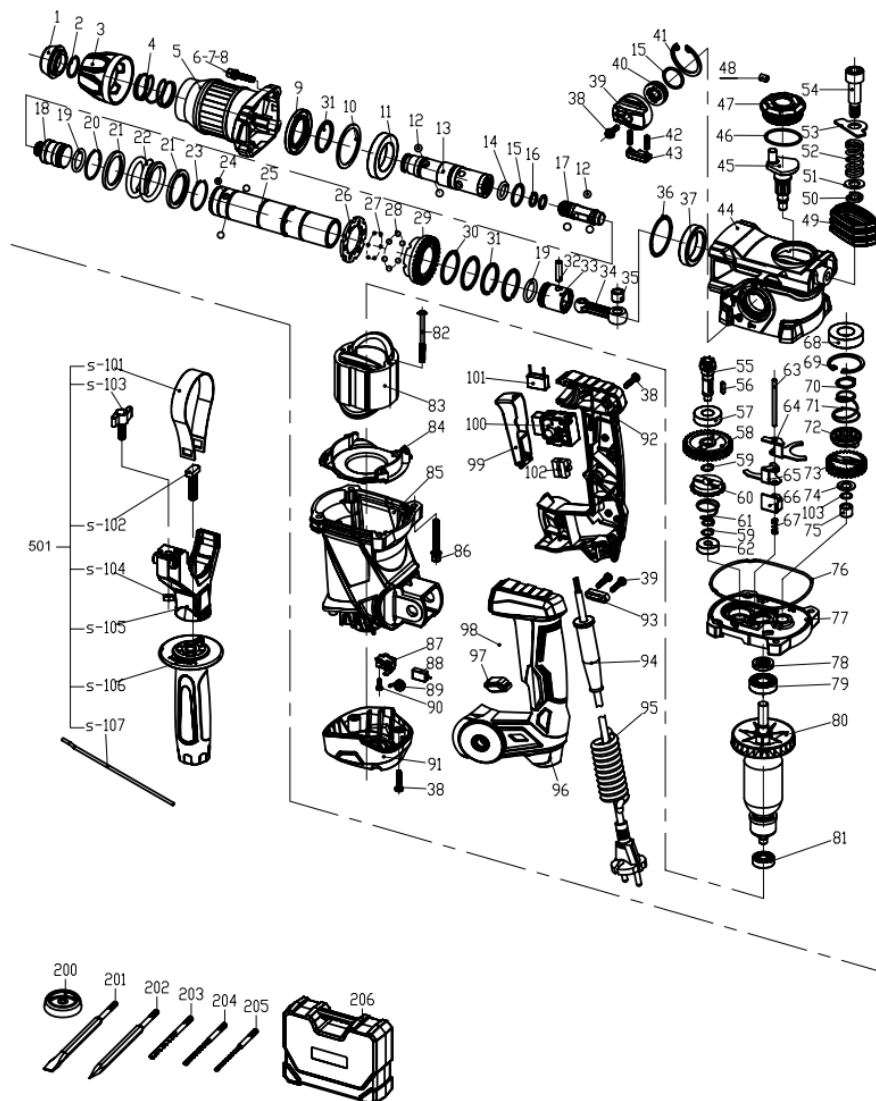
In case of excessive sparking, have the carbon brushes checked only by a qualified electrician. Important. The carbon brushes should not be replaced by anyone but a qualified electrician.

Storage

Store the device and its accessories in a dark, dry and frost-proof place that is inaccessible to children. The optimum storage temperature is between 5 and 30°C. Store the electrical tool in its original packaging. Cover the electrical tool in order to protect it from dust and moisture. Store the operating manual with the electrical tool.

Disposal and recycling

The equipment is supplied in packaging to prevent it from being damaged in transit. The raw materials in this packaging can be reused or recycled. The equipment and its accessories are made of various types of material, such as metal and plastic. Never place defective equipment in your household refuse. The equipment should be taken to a suitable collection center for proper disposal. If you do not know the whereabouts of such a collection point, you should ask in your local council offices.



scheppach Fabrikation von Holzbearbeitungsmaschinen GmbH



hereby declares the following conformity under the EU Directive and standards for the following article

Bohrhammer – DH1000PLUS

	2009/105/EC
	2014/35/EU
	2006/28/EC
	2005/32/EC
x	2014/30/EU
	2004/22/EC
	1999/5/EC
	97/23/EC
	90/396/EC
x	2011/65/EU

	89/686/EC_96/58/EC
x	2006/42/EC
	Annex IV Notified Body: Notified Body No.: Reg. No.:
	2000/14/EC_2005/88/EC
	Annex V
	Annex VI Noise: measured LWA = xx dB(A); guaranteed LWA = xx dB(A) Notified Body: Notified Body No.:
	2004/26/EC
	Emission. No:

Standard references: EN 60745-1; EN 60745-2-6; EN 55014-1; EN 55014-2; EN 61000-3-2; EN 61000-3-3

Ichenhausen, den 29.06.2017



Unterschrift / Markus Bindhammer / Technical Director

Art.-No. 5908205934

Subject to change without notice

Documents registrar: Georg Kohler

Günzburger Str. 69, D-89335 Ichenhausen

Warranty

Apparent defects must be notified within 8 days from the receipt of the goods. Otherwise, the buyer's rights of claim due to such defects are invalidated. We guarantee for our machines in case of proper treatment for the time of the statutory warranty period from delivery in such a way that we replace any machine part free of charge which provably becomes unusable due to faulty material or defects of fabrication within such period of time. With respect to parts not manufactured by us, we only warrant insofar as we are entitled to warranty claims against the upstream suppliers. The costs for the installation of the new parts shall be borne by the buyer. The cancellation of the sale or the reduction of the purchase price as well as any other claims for damages shall be excluded.

scheppach Fabrikation von Holzbearbeitungsmaschinen GmbH | Günzburger Str. 69 |
D-89335 Ichenhausen | www.scheppach.com



www.scheppach.com




service@scheppach.com



+(49)-08223-4002-99



+(49)-08223-4002-58



DH1000PLUS			
Modell	2,0	Einzelteil	20 20
Hersteller	2,0	Einzelteil	20 20
Modell	2,0	Einzelteil	20 20
Hersteller	2,0	Einzelteil	20 20
Modell	2,0	Einzelteil	20 20
Hersteller	2,0	Einzelteil	20 20

[scheppach DH1000PLUS Combined Hammer](#) [pdf] User Manual
DH1000PLUS Combined Hammer, DH1000PLUS, Combined Hammer

References

-  [scheppach | scheppach](#)