



scheppach DC500 Suction System User Manual

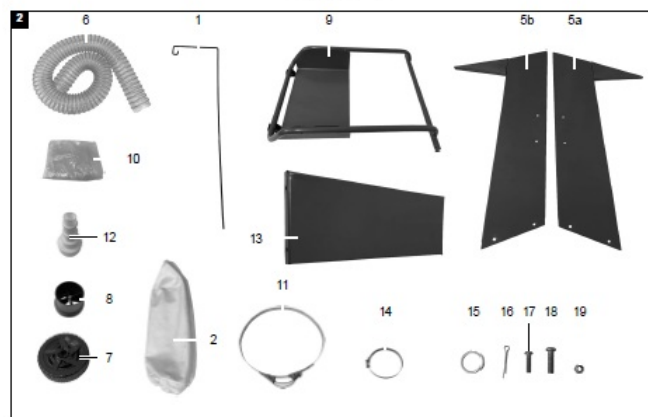
[Home](#) » [Scheppach](#) » [scheppach DC500 Suction System User Manual](#) 

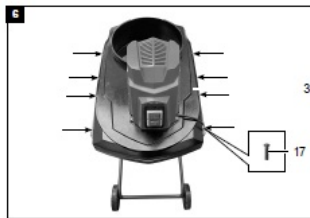
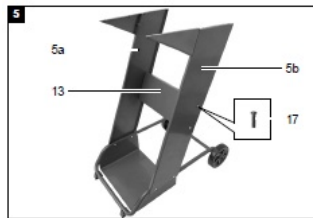
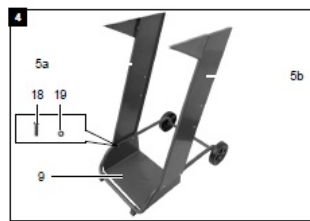
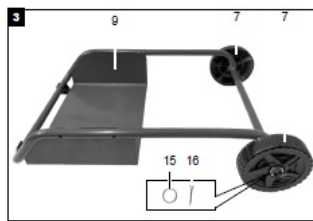
Contents

- [1 scheppach DC500 Suction System](#)
- [2 Introduction](#)
- [3 Device description](#)
- [4 Scope of delivery](#)
- [5 Proper use](#)
- [6 Safety information](#)
- [7 Technical data](#)
- [8 Unpacking](#)
- [9 Assembly / Before commissioning](#)
- [10 Start up](#)
- [11 Electrical connection](#)
- [12 Cleaning](#)
- [13 Storage](#)
- [14 Maintenance](#)
- [15 Disposal and recycling](#)
- [16 Documents / Resources](#)
 - [16.1 References](#)
- [17 Related Posts](#)



scheppach DC500 Suction System





Explanation of the symbols on the device

Symbols are used in this manual to draw your attention to potential hazards. The safety symbols and the accompanying explanations must be fully understood. The warnings themselves will not rectify a hazard and cannot replace proper accident prevention measures.

| | |
|--|---|
| | Read the operating and safety instructions before start-up and follow them! |
| | Wear hearing protection. Excessive noise can result in a loss of hearing. |
| | Wear a dust protection mask. When machining wood and other materials, harmful dust may be generated. Do not machine material containing asbestos! |
| | Attention! We have marked points in these operating instructions that impact your safety with this symbol |

Introduction

Manufacturer:

- scheppach

- Fabrikation von Holzbearbeitungsmaschinen GmbH Günzburger Straße 69
- D-89335 Ichenhausen

Dear Customer

We hope your new tool brings you much enjoyment and success.

Note:

In accordance with the applicable product liability laws, the manufacturer of this device assumes no liability for damage to the device or caused by the device arising from:

- Improper handling,
- Failure to comply with the operating instructions
- Repairs carried out by third parties, unauthorized specialists.
- Installing and replacing non-original spare parts
- Application other than specified
- Failure of the electrical system in the event of the electrical regulations and VDE provisions 0100, DIN 13 / VDE0113 not being observed

Please consider:

Read through the complete text in the operating manual before installing and commissioning the device. The operating manual is intended to help the user to become familiar with the machine and take advantage of its application possibilities in accordance with the recommendations. The operating manual includes important instructions for safe, proper and economic operation of the device, for avoiding danger, for minimizing repair costs and downtimes, and for increasing the reliability and extending the service life of the device. In addition to the safety instructions in this operating manual, you must also observe the regulations applicable to the operation of the device in your country. Keep the operating manual package with the machine at all times and store it in a plastic cover to protect it from dirt and moisture. They must be read and carefully observed by all operating personnel before starting the work.

The device may only be used by personnel who have been trained to use it and who have been instructed with respect to the associated hazards. The required minimum age must be observed. In addition to the safety instructions in this operating manual and the separate regulations of your country, the generally recognized technical rules relating to the operation of such machines must also be observed. We accept no liability for accidents or damage that occur due to a failure to observe this manual and the safety instructions.

Device description

1. Retaining rod
2. Filter bag
3. Housing cpl. with engine
4. On/off switch
 1. Side panel right
 2. Side panel left
5. Extraction hose
6. Wheel
7. Hose coupling
8. Floor plate
9. Dust bag
10. Clamp fitting
11. Adapter set

12. Intermediate plate
13. Hose clamp
14. Washer
15. Split pin
16. Fillister head screw M5x16
17. Fillister head screw M5x30
18. Hexagonal nut M5

Scope of delivery

- Housing cpl. with engine
- Floor plate
- Side panel right
- Side panel left
- Intermediate plate
- Extraction hose
- Filter bag
- Dust bag
- Retaining rod
- Clamp fitting
- Wheel (2x)
- Hose coupling
- Adapter set (4-piece)
- Hose clamp (2x)
- Washer (2x)
- Split pin (2x)
- Fillister head screw M5x16 (12x)
- Fillister head screw M5x30 (4x)
- Hexagonal nut M5 (4x)
- Operating manual

Proper use

The machine complies with the applicable EC machinery directive.

- The machine has been built according to the state-of-the-art and the technical safety requirements. Nevertheless, its use may cause danger to the life and limb of the user or third parties, or damage to the machine and other material assets.
- Only use the machine when in a technically faultless condition, appropriately and in compliance with the operating manual and with full knowledge of safety and hazards! In particular, rectify malfunctions that could impair safety immediately (or commission rectification works accordingly)!
- The suction system is used for extracting chips which are produced when working with wood or wood-like materials.
- Please observe that our equipment was not designed with the intention of use for commercial or industrial

purposes. We assume no guarantee if the equipment is used in commercial or industrial applications, or for equivalent work.

- Check the filter regularly for damage. Replace damaged filters! Regularly check the housing seal and the seals for the filter and dust bag.
- When using the cleaning nozzles, do not suck up any foreign bodies such as screws, nails, pieces of plastic or wood.
- The machine may only be operated with original parts and original accessories from the manufacturer.
- The suction of wood dust and wood chippings in commercial areas is not permitted.
- Only suitable for collecting chips (not dust).
- Any use beyond this is improper use. The manufacturer is not responsible for the resulting damages; the user solely bears the risk.
- The safety, operating and maintenance specifications of the manufacturer, as well as the dimensions specified in the technical data, must be observed.
- Relevant accident prevention regulations and other generally recognized safety and technical rules must also be observed.
- The machine may only be used, maintained or repaired by persons who are familiar with it and have been informed of the dangers. Any liability of the manufacturer for damages resulting from arbitrary changes to the machine is excluded.
- The machine may only be operated with original accessories from the manufacturer.

Safety information

Attention! The following basic safety measures must be observed when using power tools for protection against electric shock, and the risk of injury and fire. Read all these notices before using the power tool and store the safety instructions well for later reference.

Safe work

- **Warning:** When power tools are used, basic safety precautions must be followed to eliminate the risks of fire, electric shock and injury to persons.
- Follow all these instructions before and while working with the machine.
- Store these safety instructions safely.
- Protect yourself from electric shock! Avoid physical contact with earthed parts.
- Unused devices should be stored in a dry, locked place and out of reach of children.
- Keep tools sharp and clean in order to be able to work better and more safely.
- Check the cable of the tool regularly and have it replaced by a recognized specialist when damaged.
- Check extension cable cables regularly and replace them when damaged.
- Only use extension cables that have been approved and appropriately labelled for use outdoors.
- Pay attention to what you are doing. Remain sensible when working. Do not use the tool when you are fatigued.
- Do not use any tools on which the switch cannot be switched on and off.
- **Warning!** The use of other insertion tools and other accessories can entail a danger of injury.
- Pull out the mains plug for any adjustment or repair tasks.
- Pass the safety instructions on to all persons who work on the machine.

- Before commissioning, check that the voltage on the device type plate corresponds to the mains voltage.
- If an extension cable is required, make sure that its cross-section is sufficient for the current consumption of the device. Minimum cross-section 1.5 mm².
- Only use the cable drum when unrolled.
- Check the mains connection cable. Never use any faulty or damaged connection cables.
- Do not use the cable to pull the plug out of the outlet. Protect the cable from heat, oil and sharp edges.
- Do not expose the machine to rain and do not use the machine in a damp or wet environment.
- Ensure good lighting.
- Do not use in the vicinity of combustible fluids or gases.
- When working outdoors, anti-slip footwear is recommended. Tie long hair back in a hair net. Avoid abnormal posture
- The operating person must be at least 18 years of age; trainees must be at least 16 years, however only under supervision.
- Keep children away from the device when connected to the mains.
- Keep the workplace free of wood debris and parts lying around.
- Disorder in the work area can lead to accidents.
- Do not allow other persons, especially children, to touch the tool or the mains cable. Keep such persons away from the workplace.
- Personnel working on the machine must not be distracted.
- Only carry out modifications, adjustment, measuring and cleaning work when the engine is switched off. – Pull out the mains plug –
- Before switching on, make sure that keys and adjusting tools are removed.
- Switch off the motor and pull out the mains plug when leaving the work station.
- All protection and safety equipment must be reassembled immediately after repair or maintenance work is completed.
- The safety, operating and maintenance information of the manufacturer, as well as the dimensions specified in the technical data, must be observed.
- The applicable accident prevention regulations and the other generally accepted safety rules must be observed.
- Do not use low-output machines for heavy work.
- Do not use the cable for purposes for which it is not intended!
- Make sure that you have secure footing and always maintain your balance.
- Check whether the moving parts function faultlessly and do not jam or whether parts are damaged. All parts must be correctly mounted and all conditions must be fulfilled to ensure fault-free operation of the tool.
- Damaged protective devices and parts must be repaired properly or replaced by a recognised specialist workshop unless otherwise specified in the usage instructions.
- Have damaged switches replaced by a customer service workshop.
- This tool conforms to the applicable safety regulations. Repairs may only be performed by an electrician using original spare parts. Otherwise, accidents can occur.
- If necessary, wear suitable personal protective equipment. This could include:
 - Hearing protection to avoid the risk of becoming hearing impaired;
 - Respiratory protection to avoid the risk of inhaling harmful dust.
- The operator must be informed about the conditions that influence the noise generation.

- Errors in the machine must be reported to the person responsible for safety as soon as they are discovered. This device is not designed to collect dangerous dust.
- This device is not designed to be operated by persons (including children) with impaired physical, sensory or mental capabilities, or who have insufficient experience and/or insufficient knowledge unless they are being supervised by a person who is responsible for their safety or they are receiving instruction about how this device is to be used. Children should not be left unattended, to ensure they do not play with the device.
- **WARNING:** Operators must be adequately instructed in the use of these machines.
- **WARNING:** This machine is not suitable for picking up dust that is hazardous to health.
- **WARNING:** This machine is intended for dry use only.
- **WARNING:** This machine is intended for indoor use only.
- **WARNING:** This machine may only be stored indoors.
- **WARNING:** Do not allow the mains connection cable to come into contact with the rotating brushes.

WARNING! This power tool generates an electromagnetic field during operation. This field can impair active or passive medical implants under certain conditions. In order to prevent the risk of serious or deadly injuries, we recommend that persons with medical implants consult with their physician and the manufacturer of the medical implant prior to operating the power tool.

Residual risks

The machine has been built according to the state-of-the-art and the recognized technical safety requirements. However, individual residual risks can arise during operation.

- Risk to health from wood dust or wood chippings. Wearing personal protective equipment such as protective goggles and dust masks is mandatory.
- Dust inhalation may occur when closing and changing the dust collection bag. A failure to observe the disposal notes in the operating instructions (e.g. regarding the use of dust masks P2) may result in dust inhalation.
- Risk to health due to noise. The permissible noise level is exceeded during operations. It is essential that personal protective equipment, such as hearing protection, is worn.
- Hazard due to electrical power with the use of improper electrical connection cables.
- Furthermore, despite all precautions having been met, some non-obvious residual risks may still remain.
- Residual risks can be minimized if the “Safety instructions” and the “Proper use” are observed along with the whole of the operating instructions.

Keep these safety instructions in a safe place.

Technical data

- Suction port, connection Ø 100 mm
- Hose length 2000 mm
- Air power 1150 m³/h
- Pressure difference 900 Pa
- Filter surface approx. 1 m²
- Container volume approx. 75 l
- Weight 14 kg
- Electric motor 230 V~ / 50Hz

- Rated input 550 W
- Motor speed 2900 min⁻¹

Technical changes reserved!

Noise and vibration

Warning: Noise can have serious effects on your health. If the machine noise exceeds 85 dB (A), please wear suitable hearing protection.

Unpacking

ATTENTION!

The device and the packaging material are not children's toys! Do not let children play with plastic bags, films or small parts! There is a danger of choking or suffocating!

- Open the packaging and carefully remove the device.
- Remove the packaging material, as well as the packaging and transport safety devices (if present).
- Check whether the scope of delivery is complete.
- Check the device and accessory parts for transport damage. In the event of complaints the carrier must be informed immediately. Later claims will not be recognized.
- If possible, keep the packaging until the expiry of the warranty period.
- Familiarize yourself with the product by means of the operating instructions before using for the first time.
- With accessories as well as wearing parts and replacement parts use only original parts. Replacement parts can be obtained from your dealer.
- When ordering please provide our article number as well as type and year of manufacture for your equipment.

Assembly / Before commissioning

ATTENTION!

Always make sure the device is fully assembled before commissioning!

Machine stand assembly (fig. 3 – 6)

- Secure the two wheels using a washer (15) and a split pin (16) each (fig. 3).
- Secure the right-hand side panel (5a) and the left-hand side panel (5b) using two fillister head screws (18) and two hexagon nuts (19) (fig. 4).
- Now fit the intermediate part (13) using a total of four fillister head screws (17) (fig. 5).
- Place the housing cpl. with engine (3) on the machine stand and fix it with a total of eight fillister head screws (17) (fig. 6).

Fitting the dust bag (fig. 7)

- Attach the dust bag (10) to the lower air outlet using the clamp fitting (11) (fig. 7).

Fitting the filter bag (fig. 8)

- Insert the retaining rod (13) into the housing cpl. with engine (3) and hook in the filter bag (11) (fig. 7).

Fitting the suction hose (fig. 9 + 10)

- Attach the suction hose (6) to the nozzle on the housing cpl. with engine (3) and fix it with a hose clamp (14) (fig. 9).
- Attach the hose coupling (8) to the other end of the hose (6) using a hose clamp (14) (fig. 10).

Start up

ATTENTION!

Always make sure the device is fully assembled before commissioning!

Switching on/off, fig. 1

- To switch on, set the ON/OFF switch (4) to position "I".
- To switch the device off again, set the ON/OFF switch (4) to position "0".

Electrical connection

The electrical motor installed is connected and ready for operation. The connection complies with the applicable VDE and DIN provisions. The customer's mains connection as well as the extension cable used must also comply with these regulations.

Damaged electrical connection cable

The insulation on electrical connection cables is often damaged.

This may have the following causes:

- Pressure points, where connection cables are passed through windows or doors.
- Kinks where the connection cable has been improperly fastened or routed.
- Places where the connection cables have been cut due to being driven over.
- Insulation damage due to being ripped out of the wall outlet.
- Cracks due to the insulation ageing.

Such damaged electrical connection cables must not be used and are life-threatening due to the insulation damage. Check the electrical connection cables for damage regularly. Ensure that the connection cables are disconnected from electrical power when checking for damage. Electrical connection cables must comply with the applicable VDE and DIN provisions. Only use connection cables of the same designation. The printing of the type designation on the connection cable is mandatory. For single-phase AC motors, we recommend a fuse rating of C 16A or K 16A for machines with a high starting current (from 3000 watts)!

Cleaning

Attention!

Disconnect the mains plug before carrying out any cleaning work.

We recommend that you clean the device directly after every use. Wipe swarf and dust off the machine from time to time with a cloth. Clean the device at regular intervals using a damp cloth and a little soft soap. Do not use any cleaning products or solvents; they could attack the plastic parts of the device. Make sure that no water can

penetrate the device interior.

Storage

- Store the device and its accessories in a dark, dry and frost-free place that is inaccessible to children.
- The optimum storage temperature lies between 5 and 30 °C.
- Store the power tool in its original packaging.
- Cover the power tool to protect it from dust or moisture.
- Store the operating manual with the power tool.

Maintenance

Attention!

Disconnect the mains plug before carrying out any maintenance work.

Connections and repairs

Connections and repair work on the electrical equipment may only be carried out by electricians.

Please provide the following information in the event of any enquiries:

- Type of current for the motor
- Data of machine type plate
- Data of motor type plate

Service information

With this product, it is necessary to note that the following parts are subject to natural or usage-related wear, or that the following parts are required as consumables.

Wearing parts*: Filter bag, filter cartridge

- * may not be included in the scope of supply!

Disposal and recycling

The device is supplied in packaging to avoid transport damages. This packaging is raw material and can thus be used again or can be reintegrated into the raw material cycle. The device and its accessories are made of different materials, such as metals and plastics. Take defective components to special waste disposal sites. Check with your specialist dealer or municipal administration!


Old devices must not be disposed of with household waste!

This symbol indicates that this product must not be disposed of together with domestic waste in compliance with the Directive (2012/19/EU) pertaining to waste electrical and electronic equipment (WEEE). This product must be handed over at the intended collection point. This can be done, for example, by returning it when purchasing a similar product or delivering it to an authorized collection point for the recycling of old electrical and electronic devices. Improper handling of waste equipment may have negative consequences for the environment and human health due to potentially hazardous substances that are often contained in electrical and electronic equipment.

By properly disposing of this product, you are also contributing to the effective use of natural resources. You can obtain information on collection points for waste equipment from your municipal administration, public waste

disposal authority, an authorized body for the disposal of waste electrical and electronic equipment or your waste disposal company.

Documents / Resources

| | |
|---|---|
|  | <p>scheppach DC500 Suction System [pdf] User Manual DC500 Suction System, DC500, Suction System</p> |
|---|---|

References

- [🔗 scheppach | scheppach](#)
- [🔗 Kontakt & Service | scheppach | scheppach](#)