



scheppach DC500 Chip Extraction System Instruction Manual

[Home](#) » [Scheppach](#) » [scheppach DC500 Chip Extraction System Instruction Manual](#) 

Contents

- 1 [scheppach DC500 Chip Extraction System](#)
- 2 [Product Usage Instructions](#)
- 3 [FAQ](#)
- 4 [Explanation of the symbols on the device](#)
- 5 [Introduction](#)
- 6 [Device description](#)
- 7 [Scope of delivery](#)
- 8 [Proper use](#)
- 9 [Safety instructions](#)
- 10 [Technical data](#)
- 11 [Unpacking](#)
- 12 [Assembly / Before commissioning](#)
- 13 [Start-up](#)
- 14 [Electrical connection](#)
- 15 [Cleaning](#)
- 16 [Maintenance](#)
- 17 [Documents / Resources](#)
 - 17.1 [References](#)
- 18 [Related Posts](#)



scheppach DC500 Chip Extraction System



Specifications:

- Product Name: DC500 Chip extraction system
- Model Number: Art.№ 5906307901
- Output Number: 5906307901_0004
- Revision Number: 15/05/2024

Product Usage Instructions

Introduction

Before operating the DC500 Chip extraction system, it is essential to read and understand the user manual thoroughly.

Delivery Contents

The package should contain all the necessary components mentioned in the user manual. Check the contents upon delivery to ensure everything is included.

Safety Instructions

Ensure to follow all safety guidelines provided in the manual to prevent any accidents or injuries during operation.

Technical Data

Refer to the technical data section of the manual for information regarding power requirements, dimensions, and other technical specifications.

Unpacking

Carefully unpack the components of the chip extraction system, ensuring no damage has occurred during transportation.

Assembly / Pre-Operation

Follow the assembly instructions provided to set up the chip extraction system correctly before starting operations.

Starting Operation

Once assembled, follow the outlined steps in the manual to start and operate the chip extraction system effectively.

Electrical Connection

Ensure proper electrical connections as per the guidelines provided in the manual to avoid any electrical hazards.

Cleaning

Regular cleaning of the chip extraction system is crucial for optimal performance. Follow the cleaning instructions provided in the manual.

Storage






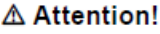
Proper storage of the chip extraction system when not in use is important to maintain its longevity. Follow storage guidelines provided in the manual.

FAQ

- **Q: Where can I find the safety instructions for the DC500 Chip extraction system?**
 - A: The safety instructions are available in the user manual provided with the product. Please refer to section 5 of the manual for detailed safety guidelines.
- **Q: What should I do before starting the chip extraction system for the first time?**
 - A: Before initial operation, make sure to read and understand all sections of the user manual, particularly sections 1, 3, and 8 for introduction, safety instructions, and electrical connection guidelines.

Explanation of the symbols on the device

Symbols are used in this manual to draw your attention to potential hazards. The safety symbols and the accompanying explanations must be fully understood. The warnings themselves will not rectify a hazard and cannot replace proper accident prevention measures.

	Read the operating and safety instructions before start-up and follow them!
	Wear hearing protection. Excessive noise can result in a loss of hearing.
	Wear a dust protection mask. When machining wood and other materials, harmful dust may be generated. Do not machine material containing asbestos!
	Protection class II
	The product complies with the applicable European directives.
 Attention!	We have marked points in these operating instructions that impact your safety with this symbol

Introduction

- Manufacturer:
- Scheppach GmbH
- Günzburger Straße 69
- D-89335 Ichenhausen

Dear Customer

We hope your new device brings you much enjoyment and success.

Note:

In accordance with the applicable product liability laws, the manufacturer of this device assumes no liability for damage to the device or caused by the device arising from:

- Improper handling
- Failure to comply with the operating instructions.
- Repairs carried out by third parties, unauthorised specialists
- Installing and replacing non-original spare parts
- Improper use
- Failure of the electrical system in the event of the electrical regulations and VDE provisions 0100, DIN 57113 / VDE 0113 not being observed

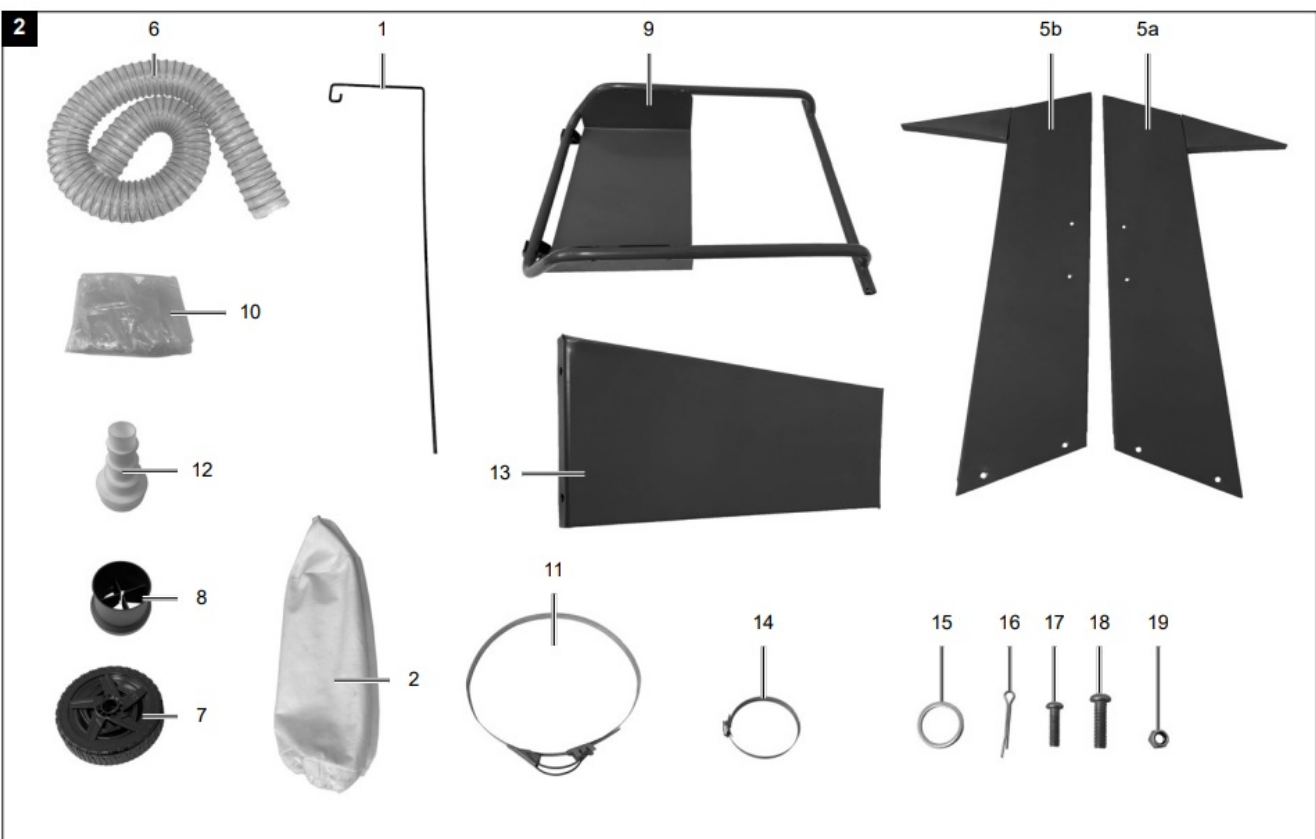
Note:

Read the whole text of the operating manual before assembly and commissioning. This operating manual should help you to familiarise yourself with your device and to use it for its intended purpose. The operating manual includes important instructions for safe, proper and economic operation of the device, for avoiding danger, for

minimising repair costs and downtimes, and for increasing the reliability and extending the service life of the device. In addition to the safety instructions in this operating manual, you must also observe the regulations applicable to the operation of the device in your country. Keep the operating manual at the device, in a plastic sleeve, protected from dirt and moisture. They must be read and carefully observed by all operating personnel before starting the work. The device may only be used by personnel who have been trained to use it and who have been instructed with respect to the associated hazards. The required minimum age must be observed. In addition to the safety instructions in this operating manual and the separate regulations of your country, the generally recognised technical rules relating to the operation of such machines must also be observed. We accept no liability for accidents or damage that occur due to a failure to observe this manual and the safety instructions.

Device description

1. Retaining rod
2. Filter bag
3. Housing cpl. with engine
4. On/off switch
5. a. Side panel right
 - b. Side panel left
6. Suction hose
7. Wheel
8. Hose coupling
9. Floor plate
10. Dust bag
11. Clamp fitting
12. Adapter set
13. Intermediate plate
14. Hose clamp
15. Washer
16. Split pin
17. Fillister head screw M5x16
18. Fillister head screw M5x30
19. Hexagonal nut M5



Scope of delivery

- Housing cpl. with engine
- Floor plate
- Side panel right
- Side panel left

- Intermediate plate
- Suction hose
- Filter bag
- Dust bag
- Retaining rod
- Clamp fitting
- Wheel (2x)
- Hose coupling
- Adapter set (4-piece)
- Hose clamp (2x)
- Washer (2x)
- Split pin (2x)
- Fillister head screw M5x16 (12x)
- Fillister head screw M5x30 (4x)
- Hexagonal nut M5 (4x)
- Operating manual

Proper use

The machine complies with the applicable EC machinery directive.

- The machine has been built according to the state-of-the-art and the technical safety requirements. Nevertheless, its use may cause danger to the life and limb of the user or third parties, or damage to the machine and other material assets.
- Only use the machine when in a technically faultless condition, appropriately and in compliance with the operating manual and with full knowledge of safety and hazards! In particular, rectify malfunctions that could impair safety immediately (or commission rectification works accordingly)!
- The chip extraction system is used for extracting chips which are produced when working with wood or wood-like materials.
- Please note that our equipment was not designed with the intention of use for commercial or industrial purposes. We assume no guarantee if the device is used in commercial or industrial applications, or for equivalent work.
- Check the filter regularly for damage. Replace damaged filters! Regularly check the housing seal and the seals for the filter and dust bag.
- When using the cleaning nozzles, do not suck up any foreign bodies such as screws, nails, pieces of plastic or wood.
- The machine may only be operated with original parts and original accessories from the manufacturer.
- The suction of wood dust and wood chippings in commercial areas is not permitted.
- Only suitable for collecting chips (not dust).
- Any use beyond this is improper use. The manufacturer is not responsible for the resulting damages; the user solely bears the risk.
- The safety, operating and maintenance specifications of the manufacturer, as well as the dimensions specified in the technical data, must be observed.
- Relevant accident prevention regulations and other generally recognized safety and technical rules must also

be observed.

- The machine may only be used, maintained or repaired by persons who are familiar with it and have been informed of the dangers. The manufacturer shall not be liable for damage resulting from unauthorised changes to the machine.
- The machine may only be operated with original accessories from the manufacturer.

Safety instructions

- Attention! The following basic safety measures must be observed when using electric tools for protection against electric shock, and the risk of injury and fire. Read all these notices before using the power tool and store the safety instructions well for later reference.

Safe work

- Warning: When power tools are used, basic safety precautions must be followed to eliminate the risks of fire, electric shock and injury to persons.
- Follow all these instructions before and while working with the machine.
- Store these safety instructions safely.
- Protect yourself from electric shock! Avoid physical contact with earthed parts.
- Unused devices should be stored in a dry, locked place and out of reach of children.
- Keep tools sharp and clean in order to be able to work better and more safely.
Check the cable of the tool regularly and have it replaced by a recognised specialist when damaged.
- Check extension cables regularly and replace them when damaged.
- Only use extension cables that have been approved and appropriately labelled for use outdoors.
- Pay attention to what you are doing. Remain sensible when working. Do not use the tool when you are fatigued.
- Do not use any tools on which the switch cannot be switched on and off.
- Warning! The use of other insertion tools and other accessories can entail a danger of injury.
- Pull out the mains plug for any adjustment or repair tasks.
- Pass the safety instructions on to all persons who work on the machine.
- Before commissioning, check that the voltage on the device type plate corresponds to the mains voltage.
- If an extension cable is required, make sure that its cross-section is sufficient for the current consumption of the device. Minimum cross-section 1.5 mm².
- Only use the cable drum when unrolled.
- Check the mains connection cable. Never use any faulty or damaged connection cables.
- Do not use the cable to pull the plug out of the outlet. Protect the cable from heat, oil and sharp edges.
- Do not expose the machine to rain and do not use the machine in a damp or wet environment.
- Ensure good lighting.
- Do not use in the vicinity of combustible fluids or gases.
- When working outdoors, anti-slip footwear is recommended. Tie long hair back in a hair net. Avoid abnormal posture
- The operating person must be at least 18 years of age; trainees must be at least 16 years, however only under supervision.
- Keep children away from the device when connected to the mains.

- Keep the workplace free of wood debris and parts lying around.
- Disorder in the work area can lead to accidents.
- Do not allow other persons, especially children, to touch the tool or the mains cable. Keep such persons away from the workplace.
- Personnel working on the machine must not be distracted.
- Only carry out modifications, adjustments, measurements and cleaning work when the engine is switched off. – Pull out the mains plug –
- Before switching on, make sure that keys and adjusting tools are removed.
- Switch off the engine and pull out the mains plug when leaving the work station.
- All protective and safety equipment must be reassembled immediately after repair or when maintenance is completed.
- The safety, operating and maintenance information of the manufacturer, as well as the dimensions specified in the technical data, must be observed.
- The applicable accident prevention regulations and the other generally accepted safety rules must be observed.
- Do not use low-output machines for heavy work.
- Do not use the cable for purposes for which it is not intended!
- Make sure that you have secure footing and always maintain your balance.
- Check whether the moving parts function faultlessly and do not jam or whether parts are damaged. All parts must be correctly mounted and all conditions must be fulfilled to ensure fault-free operation of the tool.
- Damaged protective devices and parts must be repaired properly or replaced by a recognised specialist workshop unless otherwise specified in the usage instructions.
- Have damaged switches replaced by a customer service workshop.
- This tool conforms to the applicable safety regulations. Repairs may only be performed by an electrician using original spare parts. Otherwise, accidents can occur.
- If necessary, wear suitable personal protective equipment. This could include:
 - Hearing protection to avoid the risk of becoming hearing impaired;
 - Respiratory protection to avoid the risk of inhaling harmful dust.
- The operator must be informed about the conditions that influence the noise generation.
- Errors in the machine must be reported to the person responsible for safety as soon as they are discovered.
- This device is not designed to collect dangerous dust.
- This machine must not be used by persons (including children) with reduced physical, sensory or mental capabilities or lack of experience and knowledge.
- Children may not play with the device.
- Cleaning and servicing must not be carried out by children without supervision. **WARNING:** Operators must be adequately instructed in the use of these machines.
- **WARNING:** This machine is not suitable for picking up dust that is hazardous to health.
- **WARNING:** This machine is intended for dry use only.
- **WARNING:** This machine is intended for indoor use only.
- **WARNING:** This machine may only be stored indoors.
- **WARNING:** Do not allow the mains connection cable to come into contact with the rotating brushes.
- If the mains connection cable is damaged, it must be replaced by the manufacturer, their service department or a similarly qualified person to avoid dangers.

WARNING! This power tool generates an electromagnetic field during operation. This field can impair active or passive medical implants under certain circumstances. In order to prevent the risk of serious or deadly injuries, we recommend that persons with medical implants consult with their physician and the manufacturer of the medical implant prior to operating the power tool.

Residual risks

The machine has been built according to the state-of-the-art and the recognised technical safety requirements. However, individual residual risks can arise during operation.

- Risk to health from wood dust or wood chippings. Wearing personal protective equipment such as protective goggles and dust masks is mandatory.
- Dust inhalation may occur when closing and changing the dust collection bag. A failure to observe the disposal notes in the operating instructions (e.g. regarding the use of dust masks P2) may result in dust inhalation.
- Risk to health due to noise. The permissible noise level is exceeded during operations. It is essential that personal protective equipment, such as hearing protection, is worn.
- Hazard due to electrical power, with the use of improper electrical connection cables.
- Furthermore, despite all precautions having been met, some non-obvious residual risks may still remain.
- Residual risks can be minimised if the “safety instructions” and the “Proper use” are observed along with the whole of the operating instructions. Store the safety instructions safely.

Technical data

Suction port, connection Ø	100 mm
Hose length	2000 mm
Air power	1150 m³/h
Pressure difference	900 Pa
Filter surface	ca. 1 m²
Container volume	75 l
Weight	14 kg
Electric motor	220-240 V~ / 50 Hz
Rated input	550 W
Motor speed	29000 rpm

Subject to technical changes!

Noise and vibration

Warning: Noise can have serious effects on your health. If the machine noise exceeds 85 dB, please wear suitable hearing protection. Information about noise level measured in accordance with EN ISO 3744

Noise data

Sound power level L_{WA}	96 dB
Sound pressure level L_{pA}	79 dB

Unpacking

ATTENTION!

The device and the packaging material are not children's toys! Do not let children play with plastic bags, films or small parts! There is a danger of choking or suffocating!

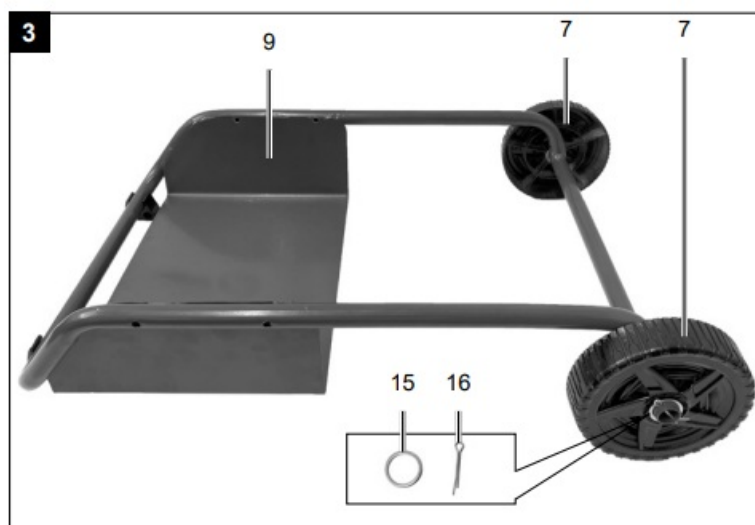
- Open the packaging and carefully remove the device.
- Remove the packaging material, as well as the packaging and transport safety devices (if present).
- Check whether the scope of delivery is complete.
- Check the device and accessory parts for transport damage. In the event of complaints the carrier must be informed immediately. Later claims will not be recognised.
- If possible, keep the packaging until the expiry of the warranty period.
- Familiarise yourself with the device by means of the operating manual before using for the first time.
- With accessories as well as wearing parts and replacement parts use only original parts. Spare parts can be obtained from your specialist dealer.
- When ordering please provide our article number as well as type and year of manufacture for your equipment.

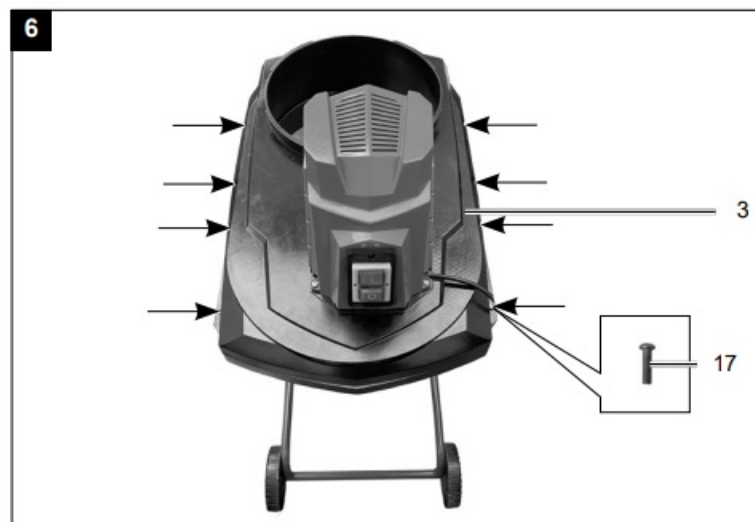
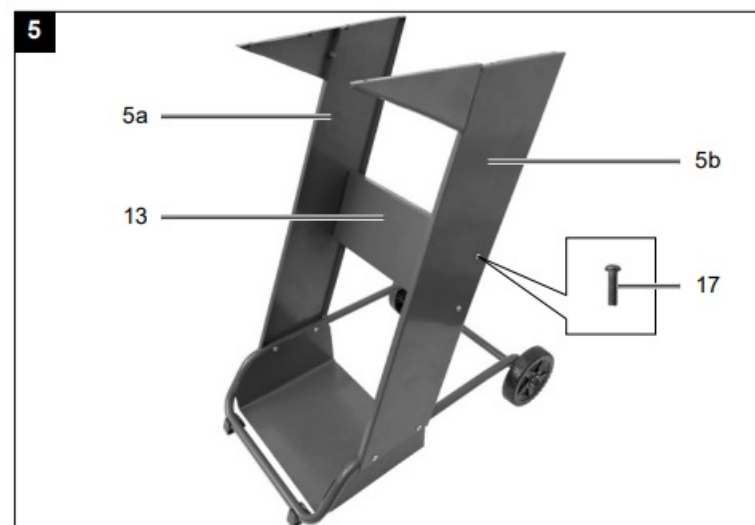
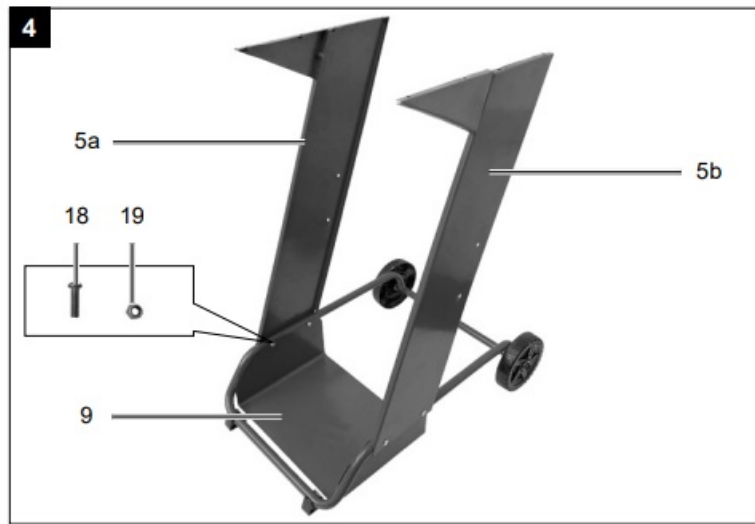
Assembly / Before commissioning

ATTENTION!

Always make sure the device is fully assembled before commissioning!

Machine stand assembly (fig. 3 – 6)





- Secure the two wheels using a washer (15) and a split pin (16) each (fig. 3).
- Secure the right-hand side panel (5a) and the lefthand side panel (5b) using two fillister head screws (18) and two hexagon nuts (19) (fig. 4).
- Now fit the intermediate part (13) using a total of four fillister head screws (17) (fig. 5).
- Place the housing cpl. with engine (3) on the machine stand and fix it with a total of eight fillister head screws (17) (fig. 6).

Fitting the dust bag (fig. 7)



- Attach the dust bag (10) to the lower air outlet using the clamp fitting (11) (fig. 7).

Fitting the filter bag (fig. 8)



- Insert the retaining rod (1) into the housing cpl. with engine (3) and hook in the filter bag (2) (fig. 7).

Fitting the suction hose (Fig. 9 + 10)





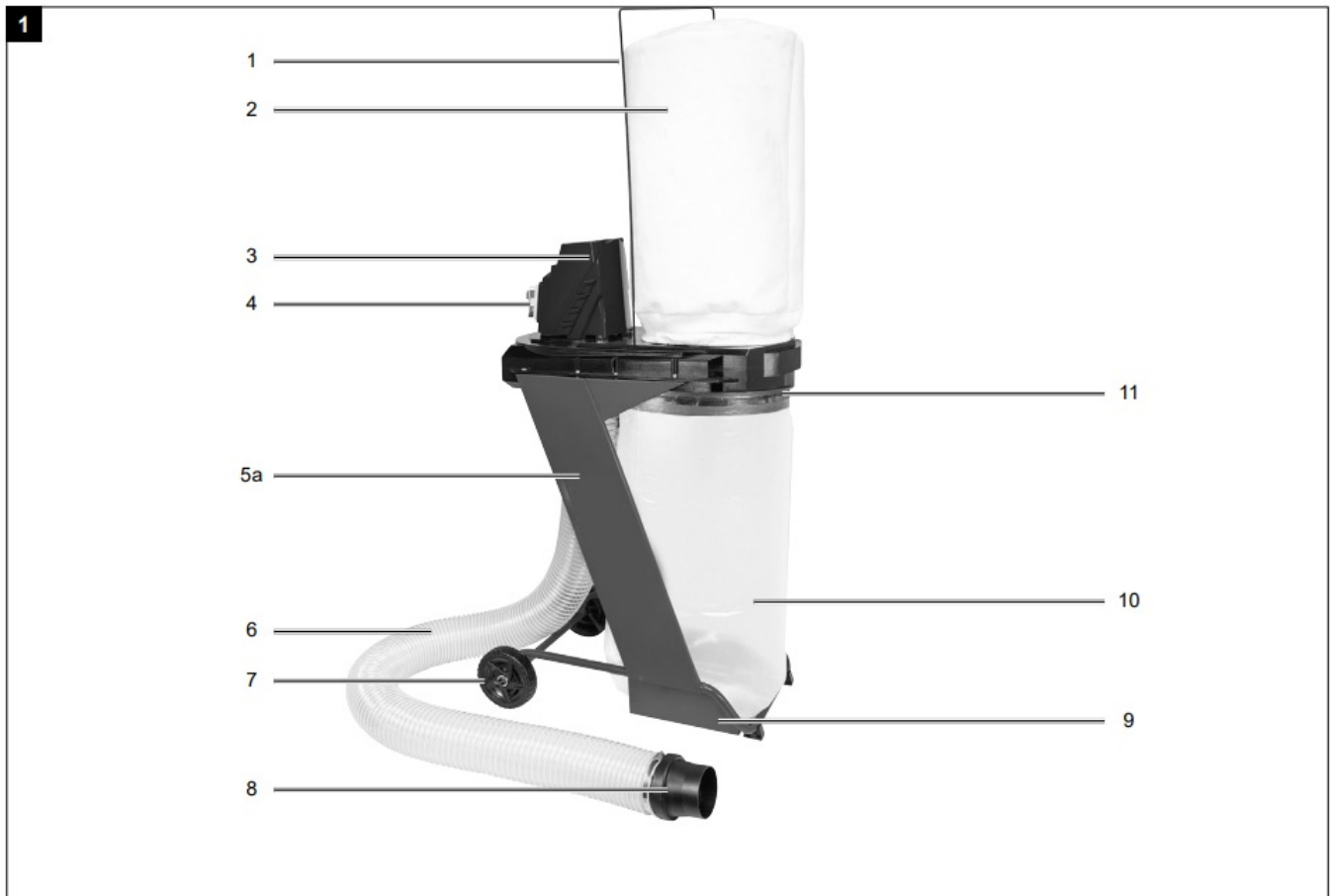
- Attach the suction hose (6) to the nozzle on the housing cpl. with engine (3) and fix it with a hose clamp (14) (fig. 9).
- Attach the hose coupling (8) to the other end of the suction hose (6) using a hose clamp (14) (fig. 10).

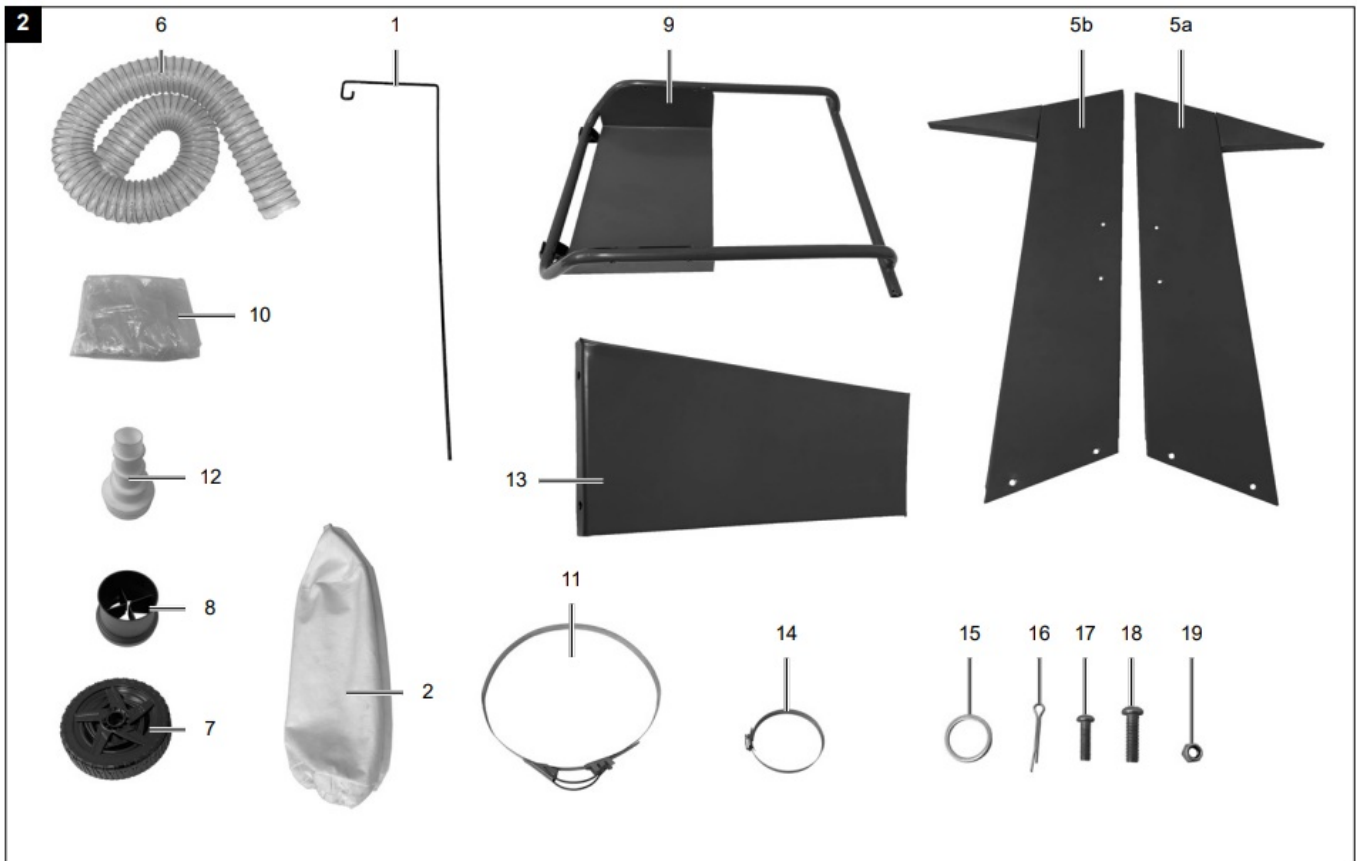
Start-up

ATTENTION!

Always make sure the device is fully assembled before commissioning!

Switching on/off, Fig. 1





- To switch on, set the ON/OFF switch (4) to position “I”.
- To switch the device off again, set the ON/OFF switch (4) to position “0”.

Electrical connection

The electrical motor installed is connected and ready for operation. The connection complies with the applicable VDE and DIN provisions. The customer's mains connection as well as the extension cable used must also comply with these regulations. Damaged electrical connection cable The insulation on electrical connection cables is often damaged.

This may have the following causes:

- Pressure points, where connection cables are passed through windows or doors.
- Kinks where the connection cable has been improperly fastened or routed.
- Places where the connection cables have been cut due to being driven over.
- Insulation damage due to being ripped out of the wall outlet.
- Cracks due to the insulation ageing. Such damaged electrical connection cables must not be used and are life-threatening due to the insulation damage.

Check the electrical connection cables for damage regularly. Ensure that the connection cables are disconnected from electrical power when checking for damage. Electrical connection cables must comply with the applicable VDE and DIN provisions. Only use connection cables of the same designation. The printing of the type designation on the connection cable is mandatory. For single-phase AC motors, we recommend a fuse rating of C 16A or K 16A for machines with a high starting current (from 3000 watts)!

Connection type Y

If the mains connection cable of this device is damaged, it must be replaced by the manufacturer, their service department or a similarly qualified person to avoid dangers.

Cleaning

Attention!

Disconnect the mains plug before carrying out any cleaning work. We recommend that you clean the device directly after every use. Wipe swarf and dust off the machine from time to time with a cloth. Clean the device at regular intervals using a damp cloth and a little soft soap. Do not use any cleaning products or solvents; they could attack the plastic parts of the device. Make sure that no water can penetrate the device interior.

Storage

- Store the device and its accessories in a dark, dry and frost-free place that is inaccessible to children.

The optimum storage temperature lies between 5 and 30 °C.

- Store the tool in its original packaging.
- Cover the tool to protect it from dust or moisture.
- Store the operating manual with the tool.

Transport

WARNING

Risk of injury due to unexpected start-up of the machine

- Pull the mains plug out of the outlet.

General information

- Pack the product to avoid damage during transport. Use the original packaging.
- Protect the product from vibrations and shocks, in particular during vehicular transport.
- Ensure adequate load securing when transporting in a vehicle.

Product-specific information

1. When lifting the product, note its weight (see technical data).
2. Always switch off the electrical tool before transport and disconnect it from the power supply.
3. To transport the power tool, lift it by the machine housing (3) and move it using the transport wheels (7).
4. Protect the electrical tool from impacts, shocks and severe vibrations, e.g. during vehicular transport.
5. Secure the electric tool against toppling and slipping.

Maintenance

Attention!

Disconnect the mains plug before carrying out any maintenance work. Connections and repairs Connections and repair work on the electrical equipment may only be carried out by electricians. Please provide the following information in the event of any enquiries:

- Type of current for the motor
- Machine data – type plate
- Motor data – type plate

Service information With this product, it is necessary to note that the following parts are subject to natural or usage-related wear, or that the following parts are required as consumables. Wearing parts*: Filter bag, filter cartridge

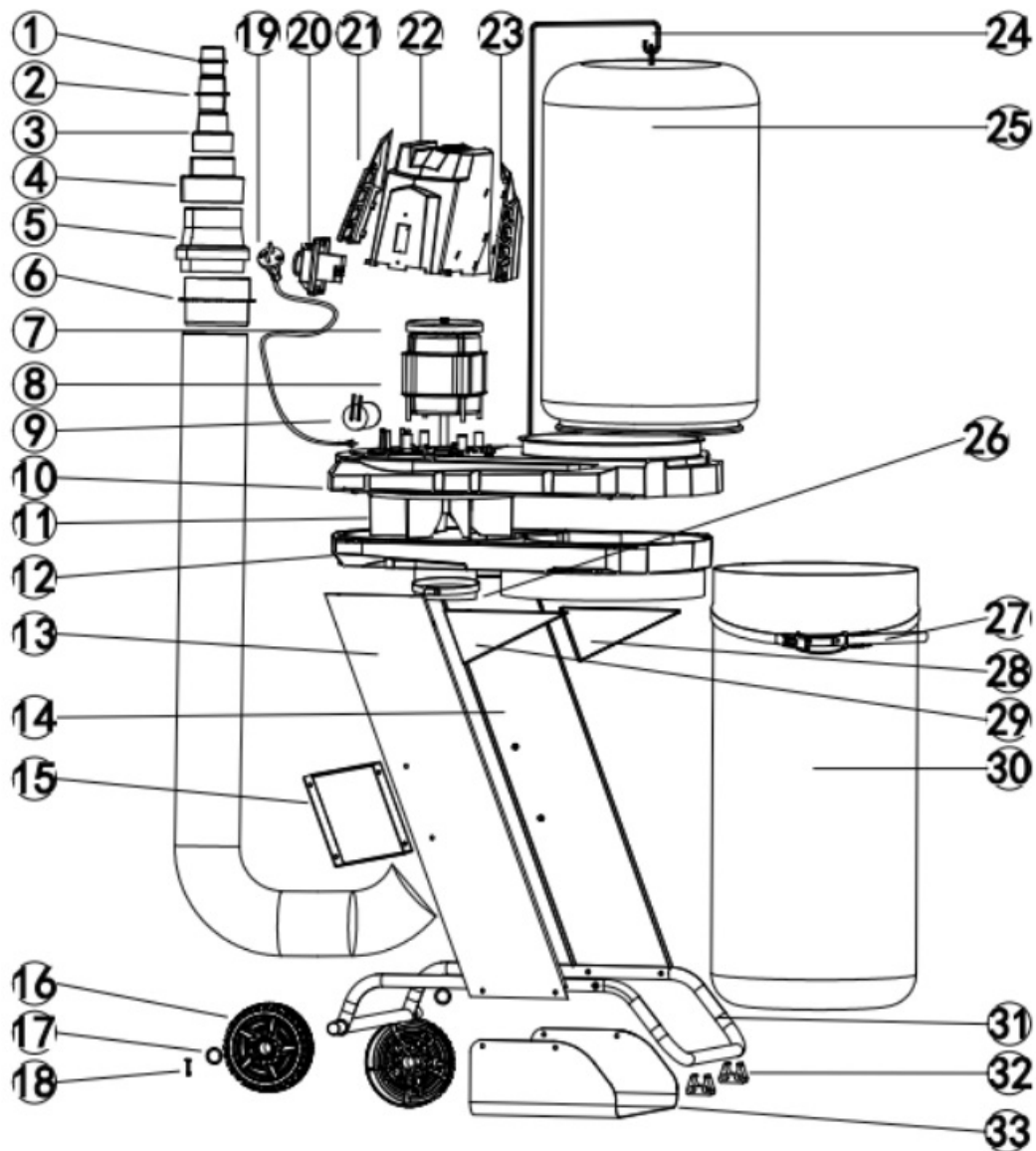
* may not be included in the scope of delivery! Spare parts and accessories can be obtained from our Service Centre. To do this, scan the QR code on the front page.

Disposal and recycling

Notes for packaging The packaging materials are recyclable. Please dispose of packaging in an environmentally friendly manner.

Notes on the electrical and electronic equipment act [ElektroG] Waste electrical and electronic equipment does not belong in household waste, but must be collected and disposed of separately!

- Used batteries or rechargeable batteries that are not installed permanently in the old device must be removed non-destructively before disposal! Their disposal is regulated by the battery act.
- Owners or users of electrical and electronic devices are legally obliged to return them after use.
- The end user is responsible for deleting their personal data from the old device being disposed of!
- The symbol of the crossed-out dustbin means that waste electrical and electronic equipment must not be disposed of with household waste.
- Waste electrical and electronic equipment can be handed in free of charge at the following places:
 - Public disposal or collection points (e.g. municipal works yards).
 - Points of sale of electrical appliances (stationary and online), provided that dealers are obliged to take them back or offer to do so voluntarily.
 - Up to three waste electrical devices per type of device, with an edge length of no more than 25 centimetres, can be returned free of charge to the manufacturer without prior purchase of a new device from the manufacturer or taken to another authorised collection point in your vicinity.
 - Further supplementary take-back conditions of the manufacturers and distributors can be obtained from the respective customer service.
- If the manufacturer delivers a new electrical device to a private household, the manufacturer can arrange for the free collection of the old electrical device upon request from the end user. Please contact the manufacturer's customer service for this.
- These statements only apply to devices installed and sold in the countries of the European Union and which are subject to the European Directive 2012/19/EU. In countries outside the European Union, different regulations may apply to the disposal of waste electrical and electronic equipment



EU Declaration of Conformity

- hereby declares the following conformity under the EU Directive and standards for the following article

Article name

Marke / Brand / Marque: **SCHEPPACH**
 Art.-Bezeichnung: **ABSAUGANLAGE - DC500**
 Article name: **CHIP EXTRACTION SYSTEM - DC500**
 Nom d'article: **ASPIRATEUR - DC500**
 Art.-Nr. / Art. no.: / N° d'ident.: **5906307901**

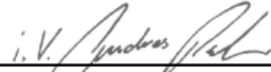
2014/29/EU	2004/22/EG	89/686/EWG_96/58/EG	2000/14/EG_2005/88/EG
2014/35/EU	2014/68/EU	90/396/EWG	Annex V
x 2014/30/EU	x 2011/65/EU*		Annex VI Noise: measured L_{WA} = xx dB; guaranteed L_{WA} = xx dB P = xx KW; L/Ø = cm Notified Body: Notified Body No.:
x 2006/42/EG	Annex IV Notified Body: Notified Body No.: Certificate No.:		2016/1628/EU
			Emission. No:

Standard references

- EN 60335-1:2012/A15:2021; EN 60335-2-69:2012; EN 62233:2008;
- EN IEC 55014-1:2021; EN IEC 55014-2:2021; EN IEC 61000-3-2:2019/A1:2021; EN 61000-3-3:2013/A2:2021

The object of the declaration described above fulfils the regulations of the directive 2011/65/EU of the European Parliament and Council from 8th June 2011, on the restriction of the use of certain hazardous substances in electrical and electronic equipment.

Ichenhausen, 15.05.2024


Signature / Andreas Pecher / Head of Project Management

First CE: 2023
Subject to change without notice


Documents registrar: Dawid Hudzik
Günzburger Str. 69, D-89335 Ichenhausen

Warranty

Apparent defects must be notified within 8 days from the receipt of the goods. Otherwise, the buyer's rights of claim due to such defects are invalidated. We guarantee for our machines in case of proper treatment for the time of the statutory warranty period from delivery in such a way that we replace any machine part free of charge which provably becomes unusable due to faulty material or defects of fabrication within such period of time. With respect to parts not manufactured by us we only warrant insofar as we are entitled to warranty claims against the upstream suppliers. The costs for the installation of the new parts shall be borne by the buyer. The cancellation of sale or the reduction of purchase price as well as any other claims for damages shall be excluded

- www.scheppach.com

Documents / Resources

	<p>scheppach DC500 Chip Extraction System [pdf] Instruction Manual DC500 Chip Extraction System, DC500, Chip Extraction System, Extraction System, System</p>
-------------------------------------------------------------------------------------	-----------------------------------------------------------------------------------------------------------------------------------------------------------------------------------

References

- [User Manual](#)

Manuals+ Privacy Policy

This website is an independent publication and is neither affiliated with nor endorsed by any of the trademark owners. The "Bluetooth®" word mark and logos are registered trademarks owned by Bluetooth SIG, Inc. The "Wi-Fi®" word mark and logos are registered trademarks owned by the Wi-Fi Alliance. Any use of these marks on this website does not imply any affiliation with or endorsement.