



scheppach DC100 Suction System Instruction Manual

[Home](#) » [Scheppach](#) » **scheppach DC100 Suction System Instruction Manual** 

scheppach

**DC100 Suction System
Instruction Manual**



DC100

Art. № 5906306901

Ausgabe. 5906306901_0301

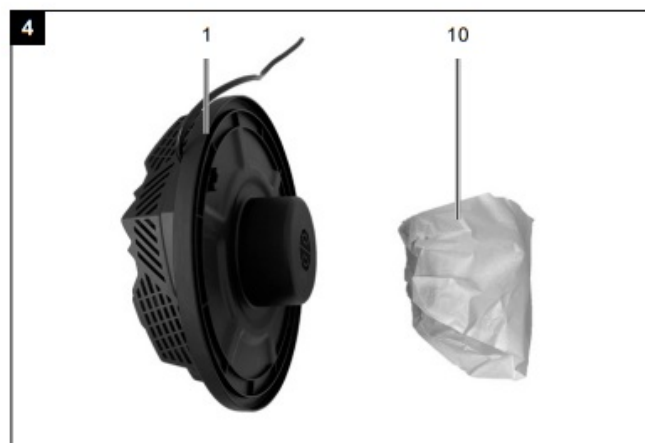
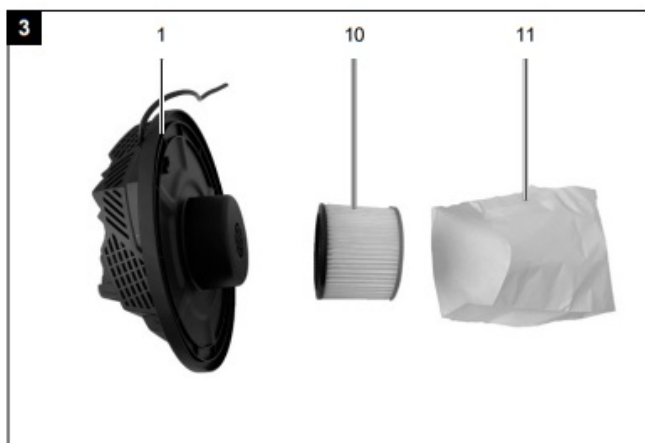
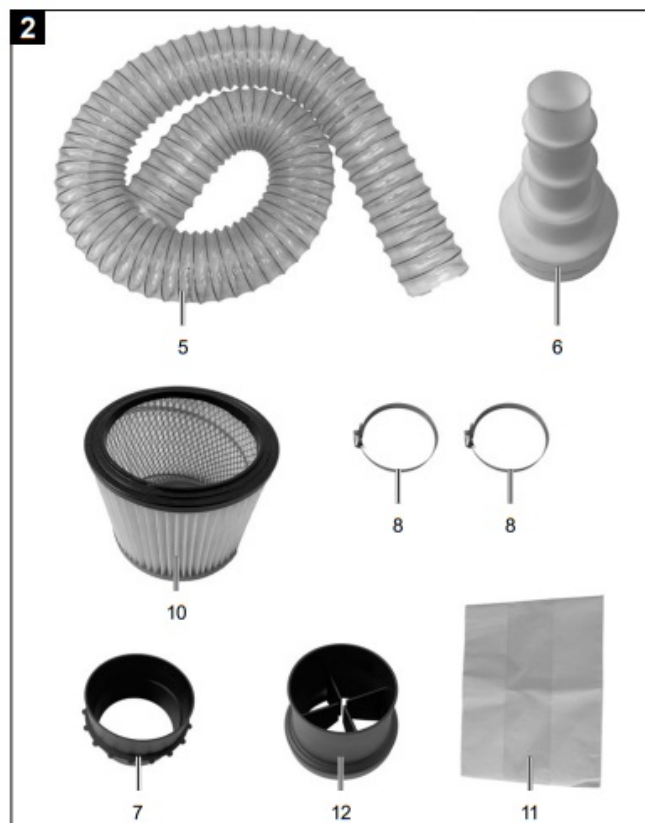
Rev.№ 03/09/2021

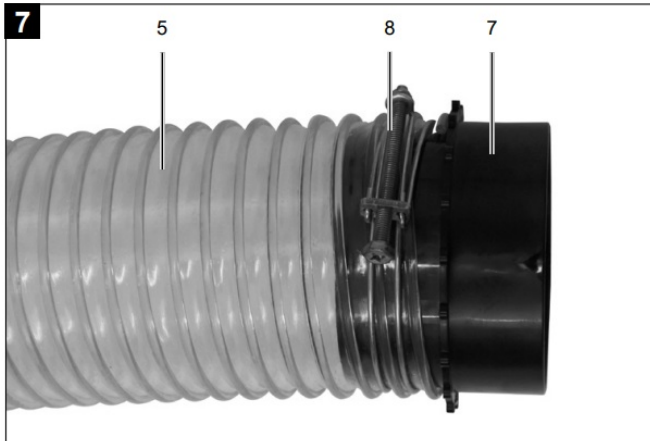
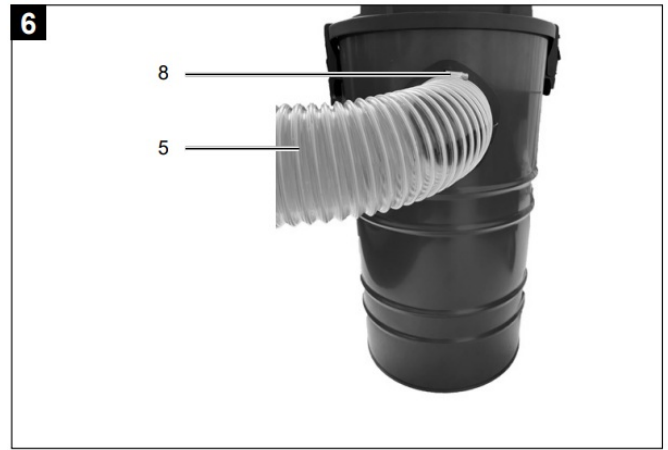
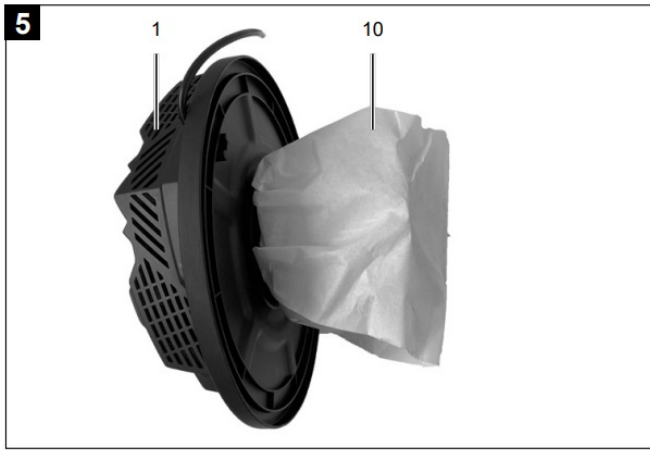


<https://www.scheppach.com/de/service>

Suction system

Translation of original instruction manual





Explanation of the symbols on the device

The use of symbols in this handbook is designed to direct your attention to possible risks. You must make sure that you understand the safety symbols and explanations accompanying them. Warnings themselves cannot remove risks and cannot substitute correct action for the prevention of accidents.

	Before commissioning, read and observe the operating manual and safety instructions!
	Wear hearing protection. Excessive noise can result in a loss of hearing.
	Wear a dust protection mask. When machining materials, harmful dust may be generated. Do not machine material containing asbestos!
 Attention!	We have marked points in these operating instructions that impact your safety with this symbol

Contents

- 1 Introduction
- 2 Device description
- 3 Scope of delivery
- 4 Proper use
- 5 Safety instructions
- 6 Technical data
- 7 Unpacking
- 8 Assembly / Before commissioning
- 9 Startup
- 10 Electrical connection
- 11 Cleaning
- 12 Storage
- 13 Maintenance
- 14 Disposal and recycling
- 15 Warranty
- 16 Documents / Resources
 - 16.1 References
- 17 Related Posts

Introduction

Manufacturer:

scheppach Fabrikation von Holzbearbeitungsmaschinen GmbH Günzburger Straße 69 D-89335 Ichenhausen

Dear Customer, We hope your new tool brings you much enjoyment and success.

Note: In accordance with the applicable product liability laws, the manufacturer of this device assumes no liability for damage to the device or caused by the device arising from:

- Improper handling
- Failure to comply with the operating instructions.
- Repairs carried out by third parties, unauthorised specialists
- Installing and replacing non-original spare parts,
- Improper use
- Failures of the electrical system in the event of the electrical regulations and VDE provisions 0100, DIN 57113 / VDE 0113 not being observed

Note: Read the whole text of the operating manual before assembly and commissioning.

This operating manual should help you to familiarise yourself with your device and to use it for its intended purpose.

The operating manual includes important instructions for the safe, proper, and economic operation of the device, for avoiding danger, minimizing repair costs and downtimes, and increasing the reliability and extending the service life of the device. In addition to the safety instructions in this operating manual, you must also observe the regulations applicable to the operation of the device in your country. Keep the operating manual on the device, in a plastic sleeve, protected from dirt and moisture. They must be read and carefully observed by all operating personnel before starting the work. The device may only be used by personnel who have been trained to use it and who have been instructed with respect to the associated hazards. The required minimum age must be observed.

In addition to the safety instructions in this operating manual and the separate regulations of your country, the generally recognized technical rules relating to the operation of such machines must also be observed. We accept no liability for accidents or damage that occur due to a failure to observe this manual and the safety instructions.

Device description

1. Engine housing
2. Handle
3. Chip container
4. On/off switch
5. Suction hose
6. Adapter
7. Hose coupling
8. Hose clamp
9. Locking hooks
10. Filter cartridge
11. Filter bag
12. Hose coupling Ø100mm

Scope of delivery

- Suction system
- Suction hose
- Hose coupling
- Adapter set (4-piece)
- Filter cartridge
- Filter bag
- 2x hose clamp
- Hose coupling Ø100mm
- Operating manual

Proper use

The machine complies with the applicable EC machinery directive .

- The machine has been built according to state-of-the-art and technical safety requirements. Nevertheless, its use may cause danger to the life and limb of the user or third parties, or damage to the machine and other material assets.
- Only use the machine when in a technically faultless condition, appropriately and in compliance with the operating manual and with full knowledge of safety and hazards! In particular, rectify malfunctions that could impair safety immediately (or commission rectification works accordingly)!
- The machine is intended for commercial use, for example in hotels, schools, hospitals, factories, shops, offices, and rental businesses.
- Please observe that our equipment was not designed with the intention of use for industrial purposes. We assume no guarantee if the equipment is used in industrial applications, or for equivalent work.
- Check the filter regularly for damage. Replace damaged filters! Regularly check the housing seal and the seals for the filter and dust bag.
- When using the cleaning nozzles, do not suck up any foreign bodies such as screws, nails, pieces of plastic or wood.
- The machine may only be operated with original parts and original accessories from the manufacturer.

- The suction of wood dust and wood chippings in commercial areas is not permitted.
- The suction of flammable liquids or dust hazardous to health is not permitted.
- Only suitable for collecting chips (not dust).
- Any use beyond this is improper use. The manufacturer is not responsible for the resulting damages; the user solely bears the risk.
- The safety, operating and maintenance specifications of the manufacturer, as well as the dimensions specified in the technical data, must be observed.
- The applicable accident prevention regulations and the other generally accepted safety rules must be observed.
- The machine may only be used, maintained, or repaired by persons who are familiar with it and have been informed of the dangers. Any liability of the manufacturer for damages resulting from arbitrary changes to the machine is excluded.
- The machine may only be operated with original accessories from the manufacturer.

Safety instructions



Attention! The following basic safety measures must be observed when using electric tools for protection against electric shock, and the risk of injury and fire. Read all these notices before using the electric tool and store the safety instructions well for later reference.

Safe work

- Warning: When power tools are used, basic safety precautions must be followed to eliminate the risks of fire, electric shock, and injury to persons.
- Follow all these instructions before and while working with the machine.
- Store these safety instructions safely.
- Protect yourself from electric shock! Avoid physical contact with earthed parts.
- Unused devices should be stored in a dry, locked place and out of reach of children.
- Keep tools sharp and clean in order to be able to work better and more safely.
- Check the cable of the tool regularly and have it replaced by a recognized specialist when damaged.
- Check extension cables regularly and replace them when damaged.
- Only use extension cables that have been approved and appropriately labeled for use outdoors.
- Pay attention to what you are doing. Remain sensible when working. Do not use the tool when you are fatigued.
- Do not use any tools on which the switch cannot be switched on and off.
- Warning! The use of other insertion tools and other accessories can entail a danger of injury.
- Pull out the main plug for any adjustment or repair tasks.
- Pass the safety instructions on to all persons who work on the machine.
- Before commissioning, check that the voltage on the device type plate corresponds to the mains voltage.
- If an extension cable is required, make sure that its cross-section is sufficient for the current consumption of the device. Minimum cross section 1.5 mm².
- Only use the cable drum when unrolled.
- Check the mains connection cable. Never use any faulty or damaged connection cables.

- Do not use the cable to pull the plug out of the outlet. Protect the cable from heat, oil, and sharp edges.
- Do not expose the machine to rain and do not use the machine in a damp or wet environment.
- Ensure good lighting.
- Do not use in the vicinity of combustible fluids or gases.
- When working outdoors, anti-slip footwear is recommended. Tie long hair back in a hair net. Avoid abnormal posture
- The operating person must be at least 18 years of age; trainees must be at least 16 years, but only under supervision.
- Keep children away from the device when connected to the mains.
- Keep the workplace free of wood debris and parts lying around.
- Disorder in the work area can lead to accidents.
- Do not allow other persons, especially children, to touch the tool or the main cable. Keep such persons away from the workplace.
- Personnel working on the machine must not be distracted.
- Only carry out modifications, adjustments, measuring, and cleaning work when the engine is switched off. – Pull out the main plug
- Before switching on, make sure that keys and adjusting tools are removed.
- Switch off the engine and pull out the main plug when leaving the workplace.
- All protection and safety equipment must be reassembled immediately after repair or maintenance work is completed.
- The safety, operating, and maintenance information of the manufacturer, as well as the dimensions specified in the technical data, must be observed.
- The applicable accident prevention regulations and the other generally accepted safety rules must be observed.
- Do not use low-output machines for heavy work.
- Do not use the cable for purposes for which it is not intended!
- Make sure that you have secure footing and always maintain your balance.
- Check whether the moving parts function faultlessly and do not jam or whether parts are damaged. All parts must be correctly mounted and all conditions must be fulfilled to ensure fault-free operation of the tool.
- Damaged protective devices and parts must be repaired properly or replaced by a recognized specialist workshop unless otherwise specified in the usage instructions. · Have damaged switches replaced by a customer service workshop.
- This tool conforms to the applicable safety regulations. Repairs may only be performed by an electrician using original spare parts. Otherwise, accidents can occur.
- If necessary, wear suitable personal protective equipment.

This could include:

- Hearing protection to avoid the risk of becoming hearing impaired;
- Respiratory protection to avoid the risk of inhaling harmful dust.
- The operator must be informed about the conditions that influence the noise generation.
- Errors in the machine must be reported to the person responsible for safety as soon as they are discovered.
- This device is not designed to collect dangerous dust.
- This device is not designed to be operated by persons (including children) with impaired physical, sensory or mental capabilities, or who have insufficient experience and/or insufficient knowledge unless they are being

supervised by a person who is responsible for their safety or they are receiving instruction about how this device is to be used. Children should not be left unattended, to ensure they do not play with the device.

- **WARNING:** Operators must be adequately instructed on the use of these machines.
- **WARNING:** This machine is not suitable to extract dust that is hazardous to health.
- **WARNING:** This machine is for dry use only.
- **WARNING:** This machine is for indoor use only.
- **WARNING:** This machine shall be stored indoors only.
- **WARNING:** Do not let the power cord come into contact with the rotating brushes.



WARNING! This electric tool generates an electromagnetic field during operation.

This field can impair active or passive medical implants under certain conditions. In order to prevent the risk of serious or deadly injuries, we recommend that persons with medical implants consult with their physician and the manufacturer of the medical implant prior to operating the electric tool.

Residual risks

The machine has been built according to state-of-the-art and recognized technical safety requirements. However, individual residual risks can arise during operation.

- Risk to health from wood dust or wood chippings. Wearing personal protective equipment such as protective goggles and dust masks is mandatory.
- Dust inhalation may occur when closing and changing the dust collection bag. A failure to observe the disposal notes in the operating instructions (e.g. regarding the use of dust masks P2) may result in dust inhalation.
- Risk to health due to noise. The permissible noise level is exceeded during operations. It is essential that personal protective equipment, such as hearing protection, is worn.
- Hazard due to electrical power, with the use of improper electrical connection cables.
- Furthermore, despite all precautions having been met, some non-obvious residual risks may still remain.
- Residual risks can be minimized if the “safety instructions” and the “Proper use” are observed along with the whole of the operating instructions.

Ensure careful storage of the safety instructions.

Technical data

Suction port, connection Ø	100 mm
Hose length	2000 mm
Airpower	215 m³/h
Pressure difference	25000 Pa
Filter surface	0.3 m²
Container volume	65 l
Weight	5 kg
Electric motor	220 – 240 V~50/60 Hz
Rated input	1200 W
Motor speed	35000 min-1

Technical changes reserved!

Noise and vibration



Warning: Noise can have serious effects on your health. If the machine noise exceeds 85 dB (A), please wear suitable hearing protection.

Unpacking



ATTENTION! The device and the packaging material are not children`s toys! Do not let children play with plastic bags, films or small parts! There is a danger of choking or suffocating!

- Open the packaging and carefully remove the device.
- Remove the packaging material, as well as the packaging and transport safety devices (if present).
- Check whether the scope of delivery is complete.
- Check the device and accessory parts for transport damage. In the event of complaints, the carrier must be informed immediately. Later claims will not be recognized.
- If possible, keep the packaging until the expiry of the warranty period.
- Familiarise yourself with the product by means of the operating instructions before using it for the first time.
- With accessories as well as wearing parts and replacement parts use only original parts. Replacement parts can be obtained from your dealer.
- When ordering please provide our article number as well as type and year of manufacture for your equipment.

Assembly / Before commissioning



ATTENTION! Always make sure the device is fully assembled before commissioning!

8.1 Installing the filter cartridge (10) with filter bag (11), Fig. 3 – 5

- Insert the filter cartridge (10) into the filter bag (11). (Fig. 3 + 4)
- Press the overhang into the filter cartridge (10). (Fig. 4)
- Now fit the filter cartridge (10) on the engine housing (1). (Fig. 5)
- Place the complete engine housing (1) on the container (3) and lock the locking hooks (9).

8.2 Installing the suction hose (5), Fig. 6 + 7

- Fit the suction hose (5) with the hose clamp (8) on the hose port of the container (3).
- Fit the other side of the suction hose (5) with the hose clamp (8) and hose coupling (7).

Startup



ATTENTION! Always make sure the device is fully assembled before commissioning!

9.1 Switching on/off, Fig. 1

- To switch on, set the ON/OFF switch (4) to position “I”.

- To switch the device off again, set the ON/OFF switch (4) to position "0".

Electrical connection

The electrical motor installed is connected and ready for operation. The connection complies with the applicable VDE and DIN provisions. The customer's mains connection, as well as the extension cable used, must also comply with these regulations.

Damaged electrical connection cable The insulation on electrical connection cables is often damaged.

This may have the following causes:

- Pressure points, where connection cables are passed through windows or doors.
- Kinks where the connection cable has been improperly fastened or routed.
- Places where the connection cables have been cut due to being driven over.
- Insulation damage due to being ripped out of the wall outlet.
- Cracks due to the insulation aging.

Such damaged electrical connection cables must not be used and are life-threatening due to the insulation damage. Check the electrical connection cables for damage regularly. Ensure that the connection cables are disconnected from electrical power when checking for damage. Electrical connection cables must comply with the applicable VDE and DIN provisions. Only use connection cables of the same designation.

The printing of the type designation on the connection cable is mandatory.

For single-phase AC motors, we recommend a fuse rating of C 16A or K 16A for machines with a high starting current (from 3000 watts)!

Cleaning

Attention! Disconnect the mains plug before carrying out any cleaning work.

We recommend that you clean the device directly after every use. Wipe the swarf and dust off the machine from time to time with a cloth.

Clean the device at regular intervals using a damp cloth and a little soft soap. Do not use any cleaning products or solvents; they could attack the plastic parts of the device. Make sure that no water can penetrate the device's interior.

Storage

- Store the device and its accessories in a dark, dry, and frost-free place that is inaccessible to children.
- The optimum storage temperature lies between 5 and 30 °C.
- Store the tool in its original packaging.
- Cover the tool to protect it from dust or moisture.
- Store the operating manual with the tool.

Maintenance

Attention! Disconnect the mains plug before carrying out any maintenance work.

Connections and repairs Connections and repair work on the electrical equipment may only be carried out by electricians.

Please provide the following information in the event of any inquiries:

- Type of current for the motor
- Machine data – type plate · Engine data – type plate

Service Information

With this product, it is necessary to note that the following parts are subject to natural or usage-related wear, or that the following parts are required as consumables.

Wearing parts*: Filter bag, filter cartridge

* may not be included in the scope of supply!

Spare parts and accessories can be obtained from our Service Centre. Spare parts and accessories can be obtained from our Service Centre.

Disposal and recycling



The equipment is supplied in packaging to prevent it from being damaged in transit. The raw materials in this packaging can be reused or recycled. The equipment and its accessories are made of various types of material, such as metal and plastic.

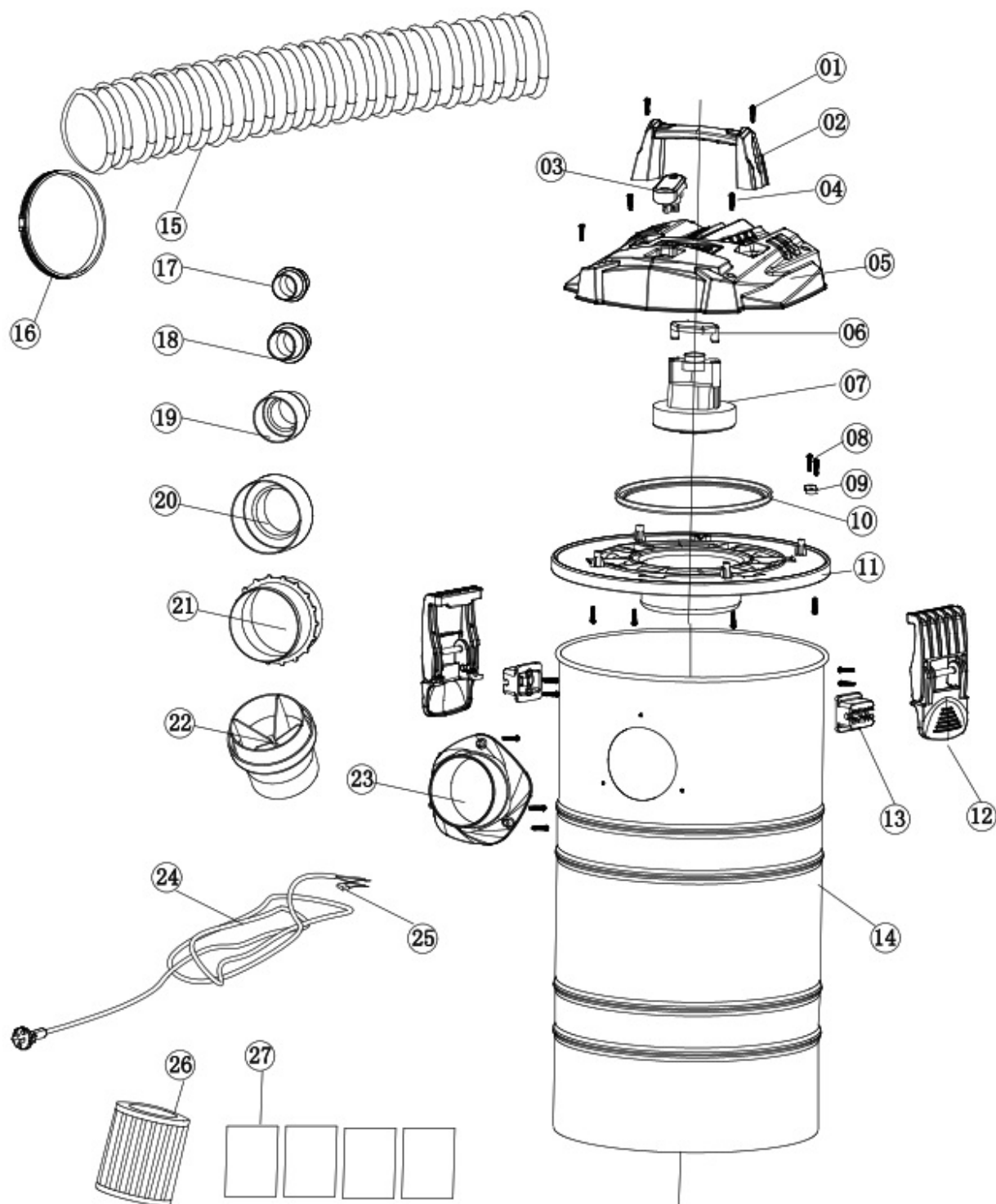


Defective components must be disposed of as special waste. Ask your dealer or your local council.

Do not throw old equipment away with household waste!



This symbol indicates that this product must not be disposed of in household waste as per Waste Electrical and Electronic Equipment Directive (2012/19/EU) and national laws. This product must be handed over at the intended collection point. This can be done, for example, by returning it when purchasing a similar product or delivering it to an authorized collection point for the recycling of old electrical and electronic devices. Improper handling of old devices can have negative effects on the environment and on human health due to potentially hazardous materials which are often contained in old electrical and electronic devices. By disposing of this product properly, you are also contributing to the effective use of natural resources. Information about collection points for old devices can be found at your municipal authority, the local disposal provider, an authorized location for the disposal of old electrical and electronic devices or your waste collection service.



CE Declaration of Conformity

Hereby declares the following conformity under the EU Directive and standards for the following article

Marke / Brand / Marque:	SCHEPPACH	- D
Art.-Bezeichnung:	ABSAUGANLAGE	- D
Article name:	SUCTION SYSTEM	- D
Nom d'article:	INSTALLATION D'ASPIRATION	- D
Art.-№ / Art. no.:	5906306901	

2014/29/EU 2014/35/EU x 2014/30/EU x 2006/42/EC Annex IV Notified Body:	Notified Body No.: Certificate No.: 2004/22/EC 2014/68/EU 2011/65/EU*	89/686/EC_96/58/EC 90/396/EC 2000/14/EC_2005/88/EC Annex V Annex VI
--	---	---

Standard references:

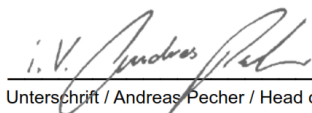
EN 60335-1:2012+A11:2014+AC:2014+A13:2017+A1:2019+A14:2019+A2:2019; EN 60335-2-69:2012; EN 62233:2008; EN 55014-1:2017+A11:2020; EN 55014-2:2015; EN IEC 61000-3-2:2019; EN 61000-3-3:2013+A1:2019

The object of the declaration described above fulfills the regulations of the directive 2011/65/EU of the European Parliament and Council from 8th June 2011, on the restriction of the use of certain hazardous substances in electrical and electronic equipment.

Ichenhausen, den 03.09.2021

First CE: 2021

Subject to change without notice



Unterschrift / Andreas Pecher / Head of Project Management

Documents registrar: Dawid Hudzik

Günzburger Str. 69, D-89335 Ichenhausen

Warranty

Apparent defects must be notified within 8 days from the receipt of the goods. Otherwise, the buyer's rights of claim due to such defects are invalidated. We guarantee for our machines in case of proper treatment for the time of the statutory warranty period from delivery in such a way that we replace any machine part free of charge which provably becomes unusable due to faulty material or defects of fabrication within such period of time. With respect to parts not manufactured by us we only warrant insofar as we are entitled to warranty claims against the upstream suppliers. The costs for the installation of the new parts shall be borne by the buyer. The cancellation of sale or the reduction of the purchase price as well as any other claims for damages shall be excluded.


www.scheppach.com

Documents / Resources



[scheppach DC100 Suction System](#) [pdf] Instruction Manual
DC100 Suction System, DC100, Suction System



[scheppach DC100 Suction System](#) [pdf] Instruction Manual
DC100 Suction System, DC100, Suction System, System

References

- [S_pach.com - This website is for sale! - pach Resources and Information.](#)
- [🔗 scheppach | scheppach](#)
- [🔗 Kontakt & Service | scheppach | scheppach](#)