




scheppach C-LT300-X Cordless Strimmer Instruction Manual

[Home](#) » [Scheppach](#) » **scheppach C-LT300-X Cordless Strimmer Instruction Manual** 

Contents

- 1 scheppach C-LT300-X Cordless Strimmer
- 2 Explanation of the symbols on the product
- 3 1. Introduction
- 4 2. Product description (fig. 1 – 8)
- 5 3. Scope of delivery (Fig. 1)
- 6 4. Proper use
- 7 Explanation of the signal words in the operating manual
- 8 5. Safety instructions
 - 8.1 5.1 Safety instructions for grass trimmers
- 9 WARNING
- 10 6. Technical data
- 11 7. Unpacking
- 12 8. Assembly
 - 12.1 8.1 Fitting the protective cover (12) (Fig. 2)
 - 12.2 8.2 Fitting the spacer bar (13) (Fig. 1)
 - 12.3 8.3 Fitting the spacer roller (11) (Fig. 3, 8)
- 13 9. Operation
 - 13.1 9.1 Inserting/removing the battery (19) into/from the battery mount (8) (Fig. 4)
 - 13.2 9.2 Switching the product on/off (Fig. 1)
 - 13.3 9.3 Overload protection
 - 13.4 9.4 Settings on the product
 - 13.5 9.5 Replacing the thread coil (16) (Fig. 1, 7)
 - 13.6 9.6 Lengthening the cutting thread (Figs. 1, 7)
- 14 10. Working instructions
 - 14.1 10.1 Cutting grass (Fig. 8)
 - 14.2 10.2 Lawn edge trimming (Fig. 3)
- 15 11. Cleaning and maintenance
 - 15.1 11.1 Cleaning
 - 15.2 11.2 Maintenance
 - 15.3 11.2.1 Replacing the coil capsule (6) (Fig. 1, 7)
- 16 12. Transport and storage
 - 16.1 12.1 Transporting the product
 - 16.2 12.2 Preparation for storage
- 17 13. Repair & ordering spare parts
 - 17.1 13.1 Ordering spare parts
- 18 14. Disposal and recycling
- 19 15. Troubleshooting
- 20 16. Warranty conditions – Scheppach 20V IXES series
- 21 Documents / Resources
 - 21.1 References
- 22 Related Posts

scheppach C-LT300-X Cordless Strimmer





















INSTRUCTION MANUAL

MODEL: C-LT300-X

Explanation of the symbols on the product

Symbols are used in this manual to draw your attention to potential hazards. The safety symbols and the accompanying explanations must be fully understood. The warnings themselves will not rectify a hazard and cannot replace proper accident prevention measures.

	Before commissioning, read and observe the operating manual and safety instructions !
	Attention! Failure to observe the safety signs and warning information affixed to the product and failure to observe the safety and operating manual can result in serious injury or even death.
	Wear safety goggles.
	Wear hearing protection.
	Wear safety gloves!

	Wear sturdy footwear!
	Keep hands and feet away from the rotating parts of the tool
	Make sure that other persons maintain a sufficient safety distance.
	Do not expose the product to rain. The product may only be stationed, stored and operated in dry ambient conditions.
	Only carry out maintenance, modification, adjustment and cleaning work when the motor is switched off and the battery is removed.
	Danger due to parts flying off while the engine is running.
	Open
	Locked
 Ø 1,6 mm Ø 300 mm	Thread thickness / cutting circle
	Angle setting
 LWA 93 dB	Guaranteed sound power level of the product.
	Lithium-ion battery
	The product complies with the applicable European directives.

1. Introduction

Manufacturer:

Scheppach GmbH
Günzburger Straße 69
D-89335 Ichenhausen

Dear Customer

We hope your new product brings you much enjoyment and success.

Note: In accordance with the applicable product liability laws, the manufacturer of this product assumes no liability for damage to the product or caused by the product arising from:

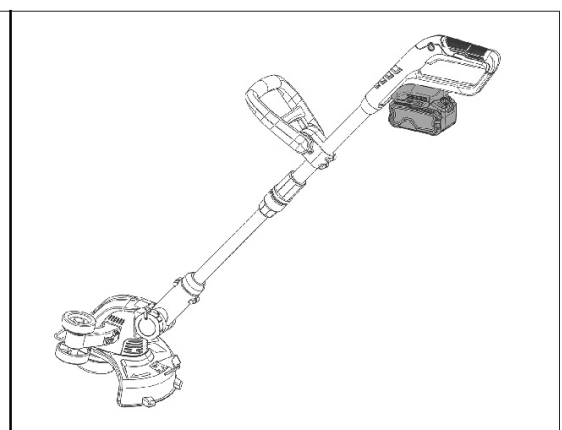
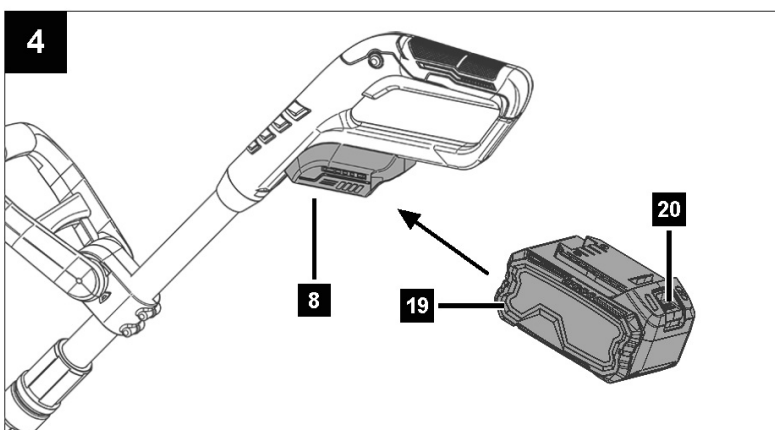
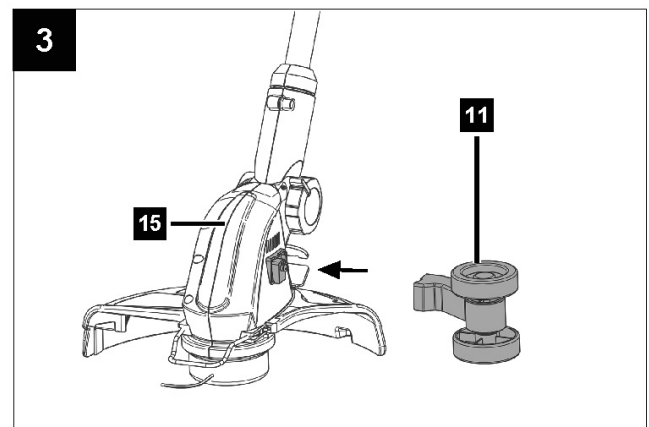
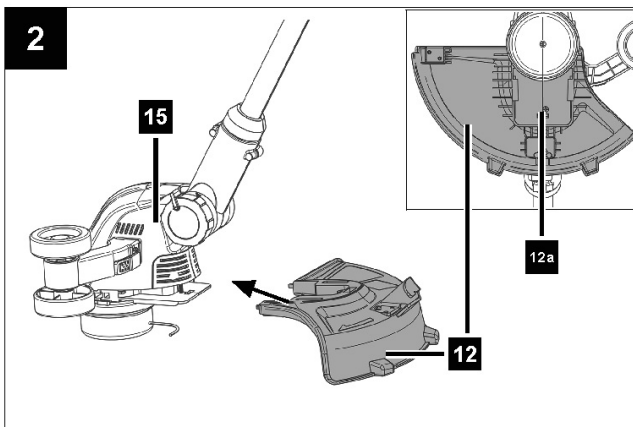
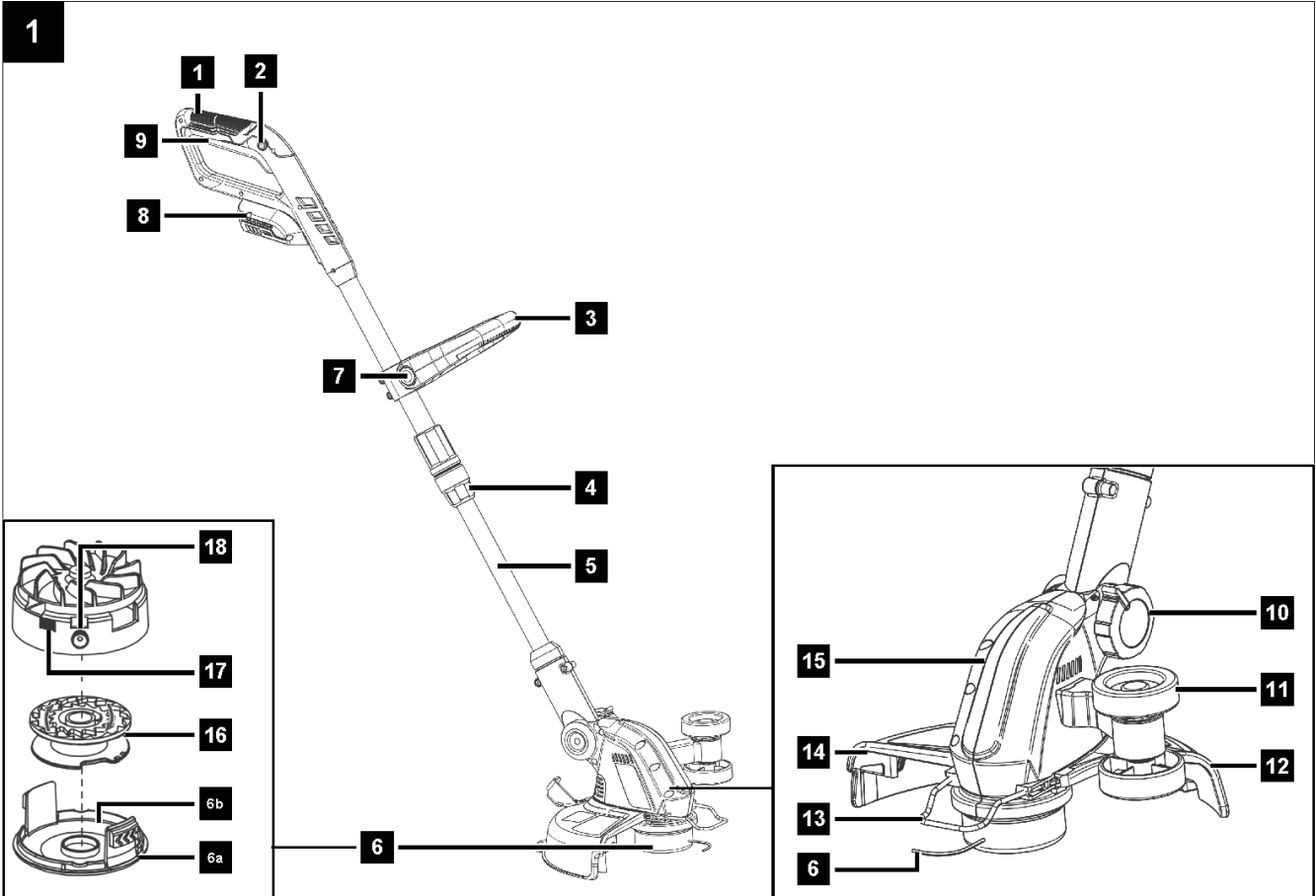
- Improper handling
- Non-compliance with the operating manual
- Repairs carried out by third parties, unauthorised specialists
- Installing and replacing non-original spare parts
- Improper use

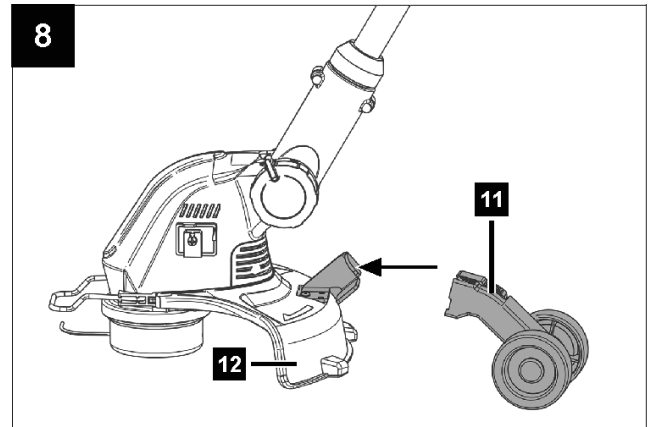
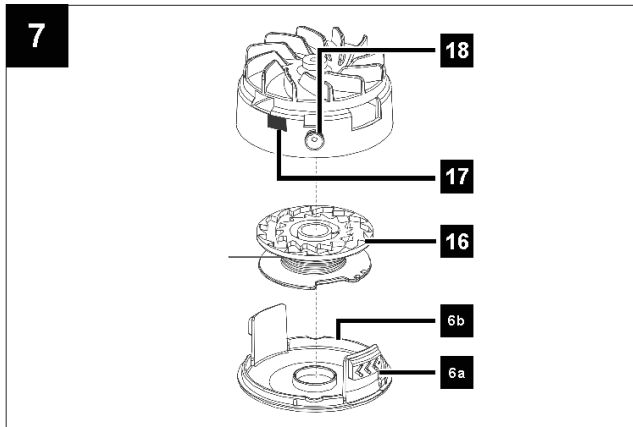
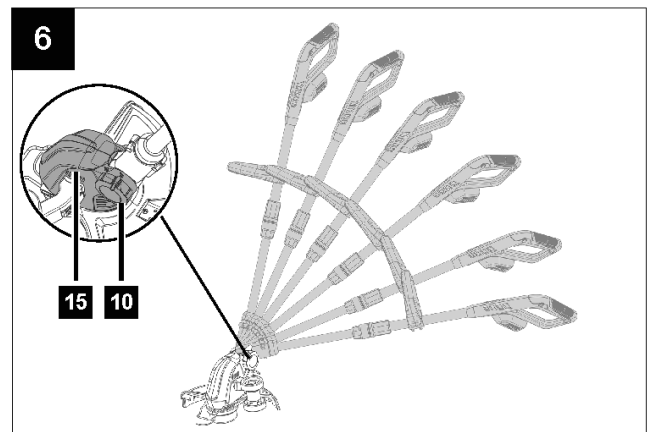
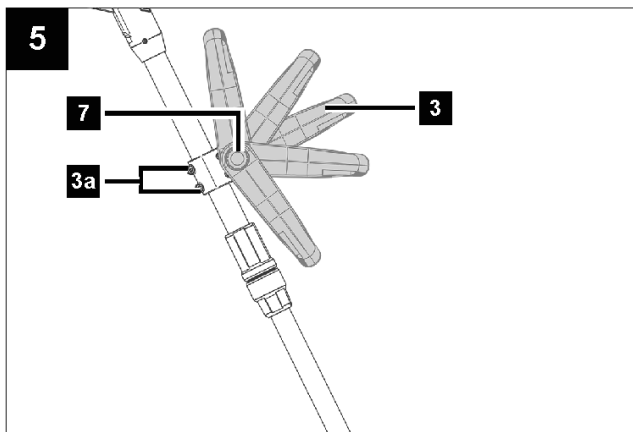
Note: The operating manual is part of this product.

It includes important instructions for the safe, proper and economic operation of the product, for avoiding danger, for minimising repair costs and downtimes and for increasing the reliability and extending the service life of the product. In addition to the safety instructions in this operating manual, you must also observe the regulations applicable to the operation of the product in your country.

Familiarise yourself with all operating and safety instructions before using the product. Only operate the product as described and for the specified areas of application. Keep the operating manual in a good place and hand over all documents when passing the product on to third parties.

2. Product description (fig. 1 – 8)





1. Top handle
2. Switch lock
3. Additional handle
- 3a. Phillips screw
4. Threaded sleeve (length adjustment)
5. Telescopic tube
6. Coil capsule
- 6a. Unlocking
- 6b. Cover
7. Pushbutton (additional handle)
8. Battery mount
9. On/off switch
10. Locking (cutting angle)
11. Spacer roller
12. Protective cover
- 12a. Phillips screw
13. Spacer bar (flower guard)
14. Thread cutter
15. Motor head
16. Thread coil
17. Locking button (thread coil)
18. Thread outlet eyelet
19. Battery*
20. Release button (battery)

* = not included in the scope of delivery!

3. Scope of delivery (Fig. 1)

Item	Quantity	Designation
3	1 x	Additional handle (pre-fitted)
11	1 x	Spacer roller
12	1 x	Protective cover
12a.	1 x	Phillips screw
16	2 x	Thread coil (1 x pre-fitted)
	1 x	Phillips screwdriver
	1 x	Cordless strimmer
	1 x	Operating manual

4. Proper use

The product is only suitable for cutting grass in gardens and along the edges of flower beds.

The product may only be used in the intended manner.

Any use beyond this is improper. The user/operator, not the manufacturer, is responsible for damages or injuries of any type resulting from this.

An element of the intended use is also the observance of the safety instructions, as well as the assembly instructions and operating information in the operating manual.

Persons who operate and maintain the product must be familiar with the manual and must be informed about potential dangers.

The liability of the manufacturer and resulting damages are excluded in the event of modifications of the product.

The product may only be operated with original parts and original accessories from the manufacturer.

The safety, operating and maintenance specifications of the manufacturer, as well as the dimensions specified in the technical data, must be observed.

Please note that our products were not designed with the intention of use for commercial or industrial purposes.

We assume no guarantee if the product is used in commercial or industrial applications, or for equivalent work.

Explanation of the signal words in the operating manual

DANGER

Signal word to indicate an imminently hazardous situation which, if not avoided, will result in death or serious injury.

WARNING

Signal word to indicate a potentially hazardous situation which, if not avoided, could result in death or serious injury.

CAUTION

Signal word to indicate a potentially hazardous situation which, if not avoided, could result in minor or moderate injury.

ATTENTION

Signal word to indicate a potentially hazardous situation which, if not avoided, could result in product or property damage.

5. Safety instructions

WARNING

For your own safety, please thoroughly read this manual and the general safety instructions before turning the product on. If you give the product to third parties, always include these usage instructions.

Keep all safety information and instructions for future reference!

5.1 Safety instructions for grass trimmers

5.1.1 Instructions

- a) Read the entire operating manual before using the product.
- b) The product shall not be operated by persons (including children) with reduced physical, sensory or mental abilities or who have inadequate experience or knowledge.
- c) Note that the operator or user is responsible for accidents or hazards to other people or their property.

5.1.2 Preparation

- a) Check the power supply and the extension cable for signs of damage or ageing before use. If a cable is damaged during use, disconnect the mains connection cable from the mains immediately. **DO NOT TOUCH THE CABLE UNTIL IT HAS BEEN DISCONNECTED FROM THE MAINS.** Do not use the product if the cable is damaged or tattered.
- b) Check the covers and protective devices for damage and correct seating. Replace them if necessary.
- c) Never operate the product while people, especially children, or animals are nearby.

5.1.3 Operation

1. Always wear safety goggles.
2. Do not use the product barefoot or with sandals. Wear sturdy footwear and long trousers.
3. Do not use the product in a thunderstorm – Danger of lightning strike!
4. Only work in daylight or with good, artificial lighting.
5. Never operate the product with defective Protective devices or without safety devices.
6. Do not put your hands or feet in the area of the rotating tool before or after switching on.
7. If a foreign object is hit, switch off the product immediately and remove the battery. Inspect the product for damage and perform the required repairs before starting again and working with the product. If the product begins to experience exceptionally strong vibrations, switch it off immediately and check it.
8. Ventilation openings must always be free.

Using and handling the cordless tool

- a) Only charge the batteries with battery chargers recommended by the manufacturer. A battery charger that is suitable for a particular type of battery poses a fire hazard when used with other batteries.
- b) Only use the batteries in power tools that are designed for them. The use of other batteries can lead to injuries and a risk of fire.
- c) Keep the unused battery away from paper clips, coins, keys, nails, screws or other small metal objects that could cause a short-circuit between the contacts. A short-circuit between the contacts of the battery could result in burns or fires.

d) Liquid may leak from the battery if used incorrectly. Avoid contact with it. In case of accidental contact, rinse with water. If the liquid gets into your eyes, seek additional medical attention. Leaking battery fluid may cause skin irritation or burns.

e) Do not use a damaged or modified battery. Damaged or modified batteries can behave unpredictably and cause fire, explosion or injury.

f) Do not expose a battery to fire or excessive temperatures. Fire or temperatures above 130°C may cause an explosion.

g) Follow all charging instructions and never charge the battery or rechargeable tool outside the temperature range specified in the operating manual. Incorrect charging or charging outside the approved temperature range can destroy the battery and increase the risk of fire.

h) Never attempt to service damaged batteries. Any type of battery maintenance shall be carried out only by the manufacturer or an authorised customer service centre.

Residual risks

The product has been built according to state-of-the-art and the recognised technical safety rules. However, individual residual risks can arise during operation.

- Cutting injuries.
- Damage to eyes if the stipulated eye protection is not worn.
- Damage to hearing if the stipulated hearing protection is not worn.
- Residual risks can be minimised if the “Safety Instructions” and the “Intended Use” together with the operating manual as a whole are observed.
- Use the product in the way that is recommended in this operating manual. This is how to ensure that your product provides optimum performance.
- Furthermore, despite all precautions having been met, some non-obvious residual risks may still remain.

WARNING

This power tool generates an electromagnetic field during operation. This field can impair active or passive medical implants under certain circumstances. In order to prevent the risk of serious or deadly injuries, we recommend that persons with medical implants consult with their physician and the manufacturer of the medical implant prior to operating the power tool.

WARNING

In case of extended working periods, the operating personnel may suffer circulatory disturbances in their hands (vibration white finger) due to vibrations.

Raynaud's syndrome is a vascular disease that causes the small blood vessels on the fingers and toes to cramp in spasms. The affected areas are no longer supplied with sufficient blood and therefore appear extremely pale. The frequent use of vibrating products can cause nerve damage in people whose circulation is impaired (e.g. smokers, diabetics).

If you notice unusual adverse effects, stop working immediately and seek medical advice.

ATTENTION

The product is part of the 20V IXES series and may only be operated with batteries of this series. Batteries may only be charged with battery chargers of this series. Observe the manufacturer's instructions.

WARNING

Follow the safety and charging instructions and correct usage given in the instruction manual of your 20V IXES Series battery and charger. A detailed description of the charging process and further information are provided in this separate manual.

6. Technical data

Cordless trimmer	C-LT300-X
Engine voltage	20 v
Idle speed n_0	6500 rpm
Cutting circle	300 mm
Thread coil	Single-line
Thread count	1.6 mm
Thread length	4m
Cutting head tilt adjustment	0-90°
Height adjustment	Up to 270 mm
Weight (without battery)	2.49 kg

WARNING

Noise can have serious effects on your health. If the machine noise exceeds 85 dB, please wear suitable hearing protection for you and persons in the vicinity.

The noise and vibration values have been determined through a standardised measurement process.

Noise data

- Sound pressure L_{pA} 76.3 dB
- Sound power L_{wA} 88.7 dB
- Measurement uncertainty K_{wA} 2.03 dB

Vibration parameters

- Vibration a_h 2.03 m/s²
- Measurement uncertainty K 1.5 m/s²

The total vibration emission values specified and the device emissions values specified have been measured in accordance with a standardised test procedure and can be used for comparison of one electric tool with another. The total noise emission values specified and the total vibration emission values specified can also be used for an initial estimation of the load.

WARNING

The noise emission values and vibration emission value can vary from the specified values during the actual use of the power tool, depending on the type and the manner in which the electric tool is used, and in particular the type of workpiece being processed.

Try to keep the stress as low as possible. For example: Limit working time. In doing so, all parts of the operating cycle must be taken into account (such as times in which the power tool is switched off or times in which it is switched on, but is not running under a load).

7. Unpacking

WARNING

The product and the packaging material are not children's toys!

Do not let children play with plastic bags, films or small parts! There is a danger of choking or suffocating!

- Open the packaging and carefully remove the product.
- Remove the packaging material, as well as the packaging and transport safety devices (if present).
- Check whether the scope of delivery is complete.
- Check the product and accessory parts for transport damage. Immediately report any damage to the transport company that delivered the Product. Later claims will not be recognised.
- If possible, keep the packaging until the expiry of the warranty period.
- Familiarise yourself with the product by means of the operating manual before using for the first time.
- With accessories as well as wearing parts and replacement parts use only original parts. Spare parts can be obtained from your specialist dealer.
- When ordering please provide our article number as well as type and year of manufacture for the product.

8. Assembly

DANGER

Danger of injury!

If an incompletely assembled product is used, serious injuries can be caused.

- Do not use the product until it has been fully fitted.
- Before each use, carry out a visual inspection to check that the product is complete and does not contain any damaged or worn components. Safety and protective devices must be intact.

WARNING

Do not use your product until it is completely assembled and installed according to the instructions.

WARNING

Danger of injury!

Remove the battery from the power tool before carrying out any work on the power tool (e.g. maintenance, tool change, etc.) and when transporting and storing it. There is a risk of injury if the on/off switch is operated unintentionally.

8.1 Fitting the protective cover (12) (Fig. 2)

1. Slide the protective cover (12) into the recesses on the motor head (15).
The protective cover (12) clicks into place audibly.
2. Screw the protective cover (12) tight with the Phillips screw (12a).
Use the Phillips screwdriver included in the scope of delivery.

8.2 Fitting the spacer bar (13) (Fig. 1)

Note: The spacer bar keeps plants and stems that cannot be cut away from the cutting device.

1. Fit the spacer bar (13) to the front of the motor head (15).

8.3 Fitting the spacer roller (11) (Fig. 3, 8)

Lawn edge trimming:

1. Attach the spacer roller (11) to the motor head (15).
It engages audibly.

Cutting grass / transporting the product:

1. Attach the spacer roller (11) to the protective cover (12).
You will hear it click into place.

9. Operation

The hand-held and portable cordless strimmer has a cutting device with a thread coil with fully automatic adjustment. The product is also equipped with an adjustable tilt angle, adjustable telescopic tube and a spacer bar. To protect the user, the product is fitted with a protective cover that covers the cutting device.

WARNING

Danger of injury!

Remove the battery from the power tool before carrying out any work on the power tool (e.g. maintenance, tool change, etc.) and when transporting and storing it. There is a risk of injury if the on/off switch is operated unintentionally.

WARNING

Check the safety equipment regularly before each start-up. Faulty safety equipment can cause serious injuries!

ATTENTION

Make sure that the ambient temperature does not exceed 50°C and does not fall below -20°C during work.

ATTENTION

The product is part of the 20V IXES series and may only be operated with batteries of this series. Batteries may only be charged with battery chargers of this series. Observe the manufacturer's instructions.

9.1 Inserting/removing the battery (19) into/from the battery mount (8) (Fig. 4)

Inserting the battery

1. Push the battery (19) into the battery mount (8). The battery (19) clicks into place audibly.

Removing the battery

1. Press the unlock button (20) of the battery (19) and remove it from the battery mount (8).

9.2 Switching the product on/off (Fig. 1)

Switching on

Notes: Before switching on, make sure that the product does not touch any objects.

Note:

- Always hold the product tight with both hands during work. Make sure that you have a secure footing.
- Remain attentive at all times when working, and keep third parties at a safe distance from your work area.

1. To switch on, press the switch lock (2) and then press the on/off switch (9).

Note:

It is not necessary to keep the switch lock pressed after starting the product. The switch lock is intended to prevent accidental starting of the product.

Switching off

1. To switch off, release the on/off switch (9).
Continuous operation is not possible.

CAUTION

After switching off, the product will run on. Wait until the product has come to a complete stop.

9.3 Overload protection

Note:

In the event of overloading, the motor will switch itself off.

After a cool-down period (time varies) the motor can be switched back on again.

9.4 Settings on the product

9.4.1 Adjusting the additional handle (3) (Fig. 5)

Notes:

You can move the additional handle to various different positions.

Adjust the additional handle so that the coil capsule is tilted slightly forwards in the working position.

ATTENTION

Only use the product with the additional handle fitted.

1. Press the pushbutton (7) on the additional handle (3). Hold it down to adjust the additional handle (3).
2. To lock the additional handle (3) in place, release the push button (7).

The locking detents integrated in the holder secure the additional handle (3) and prevent it from moving unintentionally.

Note:

The additional handle can be rotated 360° on the product and can be moved to any desired/needed position.

1. To do this, loosen the two Phillips screws (3a) on the additional handle (3).
Use the Phillips screwdriver supplied.
2. Turn the additional handle (3) to the desired position.
3. Tighten the two Phillips head screws (3a) again.

9.4.2 Adjust the height (Fig. 1)

Note:

The telescopic tube allows you to adjust the product to suit your individual size.

1. Loosen the threaded sleeve (4).
2. Adjust the telescopic tube (5) to the desired length and tighten the threaded sleeve (4) again.

9.4.3 Adjusting the cutting angle (Fig. 6)

By changing the cutting angle, you can also trim in inaccessible places, e.g. under benches and protrusions.

6 positions are possible.

1. Loosen off the locking device (10) on the motor head (15) and tilt the telescopic tube (5).
2. Tighten the locking device (10) again to lock the locking device (10) in place.

Function as a trimmer:

Cutting angle positions 1 – 5

Function as a lawn edge trimmer:

Cutting angle position 6

9.5 Replacing the thread coil (16) (Fig. 1, 7)

1. Open the coil capsule (6) by simultaneously pressing the two release buttons (6a) on the coil capsule (6).
2. Remove the cover (6b) of the coil capsule (6) and remove the thread coil (16).
3. Pull the thread end of the thread coil (16) out of the thread outlet eyelet (18).
4. Thread the thread end of the new thread coil (16) through the thread outlet eyelet (18).
5. Insert the new thread coil into the coil capsule (6).
The side of the thread coil on which the running direction is indicated by arrows must be visible after insertion.
6. Press the locking button (17). The detents integrated in the coil capsule (6) slide into the detents of the thread coil (16) and prevent unintentional adjustment.

7. Replace the cover (6b) on the coil capsule (6).

Make sure that the release catches (6a) on the cover (6b) fit exactly into the recesses on the coil capsule (6). You can hear them click into place.

8. Pull the thread end and keep pressing the locking button (17) until the thread end protrudes approx. 1 cm beyond the thread cutter (14).

9.6 Lengthening the cutting thread (Figs. 1, 7)

Your product is equipped with a fully automatic cutting thread.

The thread is automatically extended each time the machine is switched on. For the automatic thread extension system to function correctly, the thread coil (16) must have come to a standstill before you switch on the product.

If the thread is initially longer than the cutting circle specified, it is automatically shortened to the correct length by the thread cutter (16).

Note:

Check the nylon thread regularly for damage and whether the cutting thread is still the length specified by the thread cutter.

If no thread end is visible:

1. Replace the thread coil (16) as described under Replacing the thread coil (16) (Fig. 1, 7).

Set the thread length manually:

1. Pull lightly on the thread end and press the locking button (17), several times if necessary, until the thread end protrudes slightly beyond the thread cutter (16).

10. Working instructions

Note:

Some noise pollution from this product is unavoidable.

Postpone noisy work to approved and designated times. If necessary, adhere to rest periods.

- Hold the product with both hands during the work. Grasp both handles.
- Do not use the product in a thunderstorm – Danger of lightning strike!
- Check the product for obvious defects such as loose, worn or damaged parts before each use.
- Switch on the product and only then approach the material to be processed.
- Do not exert excessive pressure on the product. Let the product do the work.
- Grass is best cut when it is dry and not too long.
- Avoid contact with solid obstacles (stones, walls, fences, etc.).

10.1 Cutting grass (Fig. 8)

Note:

The spacer roller is not required for grass cutting.

1. Attach the spacer roller (11) to the protective cover (12).

You will hear it click into place.

2. Cut grass by swivelling the product to the right and left.

3. Cut slowly and keep the product tilted forwards by approx. 30° when cutting.

4. Cut long grass in layers from top to bottom.

10.2 Lawn edge trimming (Fig. 3)

The lawn trimmer can be converted as follows to cut the edges of lawns and flower beds:

1. Set the cutting angle as described under Adjusting the cutting angle (Fig. 6).

2. Attach the spacer roller (11) to the motor head (15).

It engages audibly.

3. In this way, the lawn trimmer has been converted into an edge cutter that can be used to make vertical cuts to the lawn.

4. When edging, guide the product on the edging wheel.

5. In order to change the tool back again, proceed in reverse order.

To trim lawn edges, guide the product slowly along the edges of the lawn.

11. Cleaning and maintenance

WARNING

Have maintenance and repair tasks that are not described in this operating manual, carried out by a specialist workshop. Use only original spare parts.

There is a risk of accident! Always perform maintenance and cleaning work with the battery removed. There is a danger of injury! Let the Product cool down before all maintenance and cleaning tasks. Elements of the engine are hot. There is a danger of injury and burning!

The product can start unexpectedly and cause injuries.

- Remove the battery.
- Allow the product to cool down.
- Remove the tool attachment.

WARNING

Danger of injury when handling the saw chain or the blade!

- Wear cut-resistant gloves.

11.1 Cleaning

1. Never immerse the product in water or other liquids for cleaning.

2. Do not splash the product with water.

3. Keep protective devices, air vents and the motor housing as free of dust and dirt as possible. Rub the product clean with a clean cloth or blow it off with compressed air at low pressure. We recommend that you clean the product directly after every use.

4. Ventilation openings must always be free.

5. Do not use any cleaning products or solvents; they could attack the plastic parts of the product. Make sure that no water can penetrate the product interior.

11.2 Maintenance

1. Check the product for obvious defects such as loose, worn or damaged parts before each use.
2. Check the covers and protective devices for damage and correct seating. Replace them if necessary.
3. You can smooth out slight nicks on the cutting teeth yourself. To do this, draw an oil stone along the cutting edges. Only sharp cutting teeth provide a good cutting performance.

11.2.1 Replacing the coil capsule (6) (Fig. 1, 7)

1. Open the coil capsule (6) by simultaneously pressing the two release buttons (6a) on the coil capsule (6).
2. Remove the screws from the coil capsule (6) and take off the thread coil (16).
3. Pull the thread end of the thread coil (16) out of the thread outlet eyelet (18).
4. Loosen the Allen screw with a 5 mm Allen key (not necessarily included in the scope of delivery).
5. Replace the coil capsule (6) and fit it with the Allen screw.
6. Insert the thread coil (16). Proceed as described under Replacing the thread coil (16) (Fig. 1, 7).

12. Transport and storage

12.1 Transporting the product

1. Attach the spacer roller (11) to the protective cover (12).
You will hear it click into place.
2. Tilt the product backwards.
3. You can move the product using the spacer roller (11).

12.2 Preparation for storage

1. Remove the battery.
2. Clean and check the product for damage.
3. For transport or when storing the product, cover the blade with the blade guard.
4. Fertiliser and other garden chemicals contain substances that can have a severely corrosive effect on the metal parts. Do not store the product in the vicinity of these substances.

Store the product and its accessories in a dark, dry and frost-free place that is inaccessible to children.

The optimum storage temperature is between 5°C and 30°C.

Store the product in its original packaging.

Cover the product to protect it from dust or moisture.

Store the operating manual with the product.

13. Repair & ordering spare parts

With this product, it is necessary to note that the following parts are subject to natural or usage-related wear, or that the following parts are required as consumables.

ATTENTION

According to the German Product Liability Act, no liability is accepted for damage caused by improper repairs or by not using original spare parts.

Such work should be performed by a customer service centre or an authorised specialists. The same applies to accessory parts.

Spare parts and accessories can be obtained from our Service Centre. To do this, scan the QR code on the front page.

13.1 Ordering spare parts

Please provide the following information when ordering spare parts:

- Model designation
- Item number
- Type plate data

Spare parts / accessories

- Battery pack SBP2.0 – Article no.: 7909201708
- Battery pack SBP4.0 – Article no.: 7909201709
- Battery charger SBC2.4A – Article no.: 7909201710
- Battery charger SBC4.5A – Article no.: 7909201711
- Battery charger SDBC2.4A – Article no.: 7909201712
- Battery charger SDBC4.5A – Article no.: 7909201713
- StarterKit SBSK2.0 – Article no.: 7909201720
- StarterKit SBSK4.0 – Article no.: 7909201721

14. Disposal and recycling

Notes for packaging



The packaging materials are recyclable. Please dispose of packaging in an environmentally friendly manner.

Notes on the electrical and electronic equipment act [ElektroG]



Waste electrical and electronic equipment does not belong in household waste, but must be collected and disposed of separately!

- Used batteries or rechargeable batteries that are not installed permanently in the old appliance must be removed non-destructively before disposal! Their disposal is regulated by the battery act.
- Owners or users of electrical and electronic devices are legally obliged to return them after use.
- The end user is responsible for deleting their personal data from the old device being disposed of!

- The symbol of the crossed-out dustbin means that waste electrical and electronic equipment must not be disposed of with household waste.
- Waste electrical and electronic equipment can be handed in free of charge at the following places:
 - Public disposal or collection points (e.g. municipal works yards)
 - Points of sale of electrical appliances (stationary and online), provided that dealers are obliged to take them back or offer to do so voluntarily.
 - Up to three waste electrical devices per type of device, with an edge length of no more than 25 centimetres, can be returned free of charge to the manufacturer without prior purchase of a new device from the manufacturer or taken to another authorised collection point in your vicinity.
 - Further supplementary take-back conditions of the manufacturers and distributors can be obtained from the respective customer service.
- If the manufacturer delivers a new electrical appliance to a private household, the manufacturer can arrange for the free collection of the old electrical appliance upon request from the end user. Please contact the manufacturer's customer service for this.
- These statements only apply to devices installed and sold in the countries of the European Union and which are subject to the European Directive 2012/19/EU. In countries outside the European Union, different regulations may apply to the disposal of waste electrical and electronic equipment.

Notes on lithium-ion batteries



Remove the battery before disposing of the device!

- Do not dispose of the battery in household waste, in a fire (risk of explosion) or in water. Damaged batteries can harm the environment and your health if toxic vapours or liquids escape.
- Defective or used batteries must be recycled in accordance with Directive 2006/66/EC.
- Hand in the device and the battery charger at a recycling centre. The plastic and metal parts used can be separated by type and thus recycled.
- Dispose of batteries when discharged. We recommend covering the poles with an adhesive strip to protect against a short circuit. Do not open the battery.
- Dispose of batteries according to local regulations. Return batteries to a used battery collection point where they can be recycled in an environmentally friendly manner. Ask your local waste disposal company about this.

15. Troubleshooting

Fault	Possible cause	Remedy
The product cannot be started	The battery power is too weak.	Charge the battery.
	The battery is not properly inserted.	Push the battery into the battery mount. The battery clicks into place audibly.
	On/off switch defective	Please contact our service department
	Motor defective.	
Product works with interruptions.	Internal loose contact.	Please contact our service department
	On/off switch defective	
Heavy vibration, loud noise.	Cutting device is dirty.	Clean the cutting device.
	Motor defective.	Please contact our service department
Poor cutting results.	Thread coil does not have enough cutting thread.	Extend the cutting thread / replace the thread coil.
	Cutting device is dirty.	Clean the cutting device.
	The battery power is too weak.	Charge the battery.

16. Warranty conditions – Scheppach 20V IXES series

Revision date 11/07/2023

Dear customer,

our products are subject to strict quality checks. However, if a product does not function perfectly, we deeply regret this and ask that you contact our customer service at the address specified below. We will also be glad to assist you by telephone via the service number. The following information is intended to help you to process and settle your claim without any problems.

For the assertion of warranty claims, the following applies:

1. The warranty conditions govern our additional manufacturer warranty services for purchasers (private end consumers) of new products. The statutory warranty claims are not affected by this warranty. This is the responsibility of the dealer who you purchased the product from.

2. The warranty service extends exclusively to defects in a new product purchased by you that are based on a material or manufacturing fault and is, at our discretion, limited to the repair of such defects free of charge or the replacement of the product (also replacement with a successor model, if necessary). Replaced products or parts shall become our property. Please note that our products were not designed for commercial, trade or professional use.

A warranty claim is therefore not valid if the product has been used in commercial, trade or industrial operations within the warranty period or has been subjected to equivalent stress.

3. The following are excluded from our warranty services:

– Damage to the product which was caused by non-observance of the assembly instructions, improper installation,

non-observance of the operating instructions (e.g. connection to an incorrect mains voltage or type of current) or the maintenance and safety regulations or use of the product in unsuitable environmental conditions as well as by insufficient care and maintenance.

– Damage to the product caused by misuse or improper application (such as overloading the product or using non-approved tools and accessories), penetration of foreign bodies into the product (such as sand, stones or dust), transport damage, use of force or external influences (such as damage caused if dropped).

– Damage to the product or parts of the product which is due to intentional, normal (operational) or other natural wear as well as damage and/or wearing of wear parts.

– Defects in the product which have been caused by the use of accessories, expansions or spare parts that are not original parts or are not used as intended.

– Products on which changes or modifications have been made.

– Minor deviations from the target characteristics which are irrelevant for the value and usability of the product.

– Products on which unauthorised repairs have been carried out, in particular by an unauthorised third party.

– If the marking on the product or the identification information of the product (machine label) is missing or illegible.

– Products that are very dirty and are therefore re-fused by the service personnel.

– Claims for damages and consequential damages are generally excluded from this warranty.

4. The warranty period is usually 5 years (12 months for batteries/rechargeable batteries) and starts from the date of purchase of the product. The date on the original purchase receipt is decisive. Warranty claims must be made immediately after becoming aware of them. The assertion of warranty claims after expiry of the warranty period is excluded. The repair or replacement of the product does not result in an extension of the warranty period, nor does this service initiate a new warranty period for the product or for any installed spare parts. This also applies when using an on-site service. The product concerned is to be cleaned and returned to the service centre together with a copy of the purchase receipt, which must include the date of purchase and the product designation. If a product is sent in incomplete without the complete scope of delivery, the missing accessories will be charged / deducted in value if the product is exchanged or in the event of a refund. Partially or completely dismantled products cannot be accepted as a warranty claim. In the event of an unjustified complaint or if outside the warranty period, the purchaser shall generally bear the transport costs and the transport risk.

Please report a warranty claim in advance to the service centre (see below).

It is generally agreed upon that the defective product will be returned to the service address given below with a brief description of the fault by organised return or, in the case of repair outside the warranty period, with sufficient postage, taking the appropriate packaging and shipping guidelines into account. Please note that your product (depending on the model) will be free of all operating materials when returned for safety reasons. The product sent to our service centre must be packaged in such a way that damage to the product under complaint is avoided during transport. After successful repair / replacement, we will send the product back to you free of charge. If products cannot be repaired or replaced, a sum up to the purchase price of the defective product may be refunded at our own discretion, taking into account any deduction for wear and tear. These warranties are only for the benefit of the original private purchaser and cannot be assigned or transferred.

5. Extension of the warranty period to 10 years: Scheppach offers an additional warranty extension of 5 years on products of the Scheppach 20V series. Thus, the warranty period for these products totals 10 years. Batteries / rechargeable batteries, battery chargers and accessories are excluded from this. You can claim this warranty extension by registering your Scheppach product from this range at <https://garantie.scheppach.com> no later than 30 days from the date of purchase. After registering online successfully, you will receive confirmation for the item-related warranty extension.

6. In order to submit your warranty claim, please contact our service centre.

Preferably, please use our form on our homepage: <https://www.scheppach.com/de/service>

Please do not send us any products without first contacting and registering with our service centre. Contacting our service centre first is mandatory to claim these warranty promises. Warranty claims must be made before expiry of the warranty period within 14 days of discovery of the defect. For this purpose, the original purchase receipt and, if necessary, confirmation of the item-related warranty extension are required.

7. Processing time – We normally process complaint consignments within 14 days of receipt at our service centre. If, in exceptional cases, the processing time mentioned is exceeded, you will be informed in good time.

8. Wear parts are generally excluded from the warranty! – Wear parts are: a) supplied, attached and/or installed batteries / rechargeable batteries as well as
b) all model-dependent wear parts (i.e. belts, saw blades, tool attachments, grinding discs, filters, carbon brushes etc., see operating manual). The warranty does not cover batteries or rechargeable batteries that are deeply discharged or those with damaged housing or battery terminals.

9. Cost estimate – Products that are not covered or no longer covered by the warranty will be repaired at extra cost. Upon request to our service centre, you can send in the defective products for a cost estimate and, if necessary, give the service centre approval for the repair in writing (by post, e-mail). No further processing will take place without approval for the repair.

10. Claims other than those mentioned above cannot be asserted.

The warranty conditions only apply in the current version at the time of the complaint and, if necessary, can be found on our homepage (www.scheppach.com).

In case of translations, the German version is decisive.

Scheppach GmbH ·

Günzburger Str. 69 ·

89335 Ichenhausen (Germany)

Tel: +800 4002 4002 ·

E-Mail: customerservice.GB@scheppach.com · Internet: <https://www.scheppach.com>

We reserve the right to make changes to the warranty conditions at any time without prior notice.

17 EU Declaration of Conformity

Original Declaration of Conformity

Manufacturer:

Scheppach GmbH

Günzburger Straße 69

D-89335 Ichenhausen

We declare under our sole responsibility that the product described here complies with the applicable directives and standards.

Brand: SCHEPPACH

Art. designation: CORDLESS STRIMMER C-LT300-X

Item No. 5910904900

EU directives:

2014/30/EU, 2006/42/EC, 2000/14/EC_2005/88/EC,
2011/65/EU*

* The object of the declaration described above fulfils the regulations of the directive 2011/65/EU of the European Parliament and Council from 8th June 2011, on the restriction of the use of certain hazardous substances in electrical and electronic equipment.

Applied standards:

EN 60335-1:2012/A15:2021; EN 50636-2-91:2014;

EN IEC 5014-1:2021; EN IEC 55014-2:2021

Documentation authorised representative:

Stefan Hartinger

Günzburger Str. 69

D-89335 Ichenhausen


Ichenhausen, 21.11.2023

Simon Schunk
Division Manager Product Center

Andreas Pecher
Head of Project Management

www.scheppach.com

Documents / Resources

	<p>scheppach C-LT300-X Cordless Strimmer [pdf] Instruction Manual C-LT300-X Cordless Strimmer, Cordless Strimmer, Strimmer</p>
---	--

References

- [User Manual](#)

[Manuals+.](#) [Privacy Policy](#)

This website is an independent publication and is neither affiliated with nor endorsed by any of the trademark owners. The "Bluetooth®" word mark and logos are registered trademarks owned by Bluetooth SIG, Inc. The "Wi-Fi®" word mark and logos are registered trademarks owned by the Wi-Fi Alliance. Any use of these marks on this website does not imply any affiliation with or endorsement.