




Scheppach C-JS220-X Cordless Jigsaw Instruction Manual

[Home](#) » [Scheppach](#) » Scheppach C-JS220-X Cordless Jigsaw Instruction Manual 

Contents

- 1 [Scheppach C-JS220-X Cordless Jigsaw](#)
- 2 [Usage Instructions](#)
- 3 [Explanation of the symbols on the product](#)
- 4 [Introduction](#)
- 5 [Product description \(Fig. 1-10\)](#)
- 6 [Scope of delivery \(Fig. 1\)](#)
- 7 [Proper use](#)
- 8 [Safety instructions](#)
- 9 [Technical data](#)
- 10 [Unpacking](#)
- 11 [Assembly](#)
- 12 [Operation](#)
- 13 [Working instructions](#)
- 14 [Cleaning and maintenance](#)
- 15 [Repair & ordering spare parts](#)
- 16 [Disposal and recycling](#)
- 17 [Troubleshooting](#)
- 18 [Warranty conditions -Scheppach 20V IXES series](#)
- 19 [EU Declaration of Conformity](#)
- 20 [Documents / Resources](#)
 - 20.1 [References](#)
- 21 [Related Posts](#)





Specifications:

- Product Code: 5901817900
- Edition Number: 5901817900_0601
- Revision Number: 02/01/2024
- Model: C-JS220-X

Product Description:

The cordless jigsaw is a versatile tool designed for cutting various materials with ease. It comes with features like an on/off switch, handle, battery compartment, pendulum action switch, base plate, locking screws, chuck, clamp lever, safety guard, LED work light, dust extraction adapter, dust extraction port, shoe guide, locking mechanism, parallel guide, and battery release button.

Usage Instructions

1. Safety Precautions:

- Read and follow all safety instructions provided in the manual.
- Wear protective eyewear and gloves while operating the jigsaw.
- Ensure the lithium-ion battery is properly installed before use.

2. Operating the Jigsaw:

1. To start the jigsaw, locate the power switch and turn it on.
2. Adjust the cutting speed and action mode as needed.
3. Place the jigsaw on the material to be cut and guide it along the desired cutting line.
4. Use the LED work light for better visibility in low-light conditions.
5. Engage the dust extraction system to keep your work area clean.

3. Battery Handling:

- Only use compatible batteries with the jigsaw.
- Charge the battery fully before initial use.
- Remove the battery when not in use to prevent accidental activation.

FAQ:

Q: What should I do if the jigsaw blade gets stuck?

A: If the blade gets stuck, turn off the jigsaw, remove the battery, and carefully free the blade from the material. Ensure the jigsaw is unplugged before attempting to dislodge the blade.

Q: Can I use this jigsaw for cutting metal?

A: Yes, this jigsaw can be used for cutting metal with the appropriate blade. Ensure to follow safety precautions and use proper cutting techniques for metal materials.

<https://www.scheppach.com/de/service>



Explanation of the symbols on the product

Symbols are used in this manual to draw your attention to potential hazards. The safety symbols and the accompanying explanations must be fully understood. The warnings themselves will not rectify a hazard and cannot replace proper accident prevention measures.

	Before commissioning, read and observe the operating manual and safety instructions!
	Attention! Failure to observe the safety signs and warning information affixed to the product and failure to observe the safety and operating manual can result in serious injury or even death.
	Wear safety goggles.
	Wear hearing protection.
	Wear protective gloves!
	Lithium-ion battery
	The product complies with the applicable European directives.

Introduction

Manufacturer:

Scheppach GmbH
Günzburger Straße 69
D-89335 Ichenhausen

Dear Customer

We hope your new product brings you much enjoyment and success.

Note:

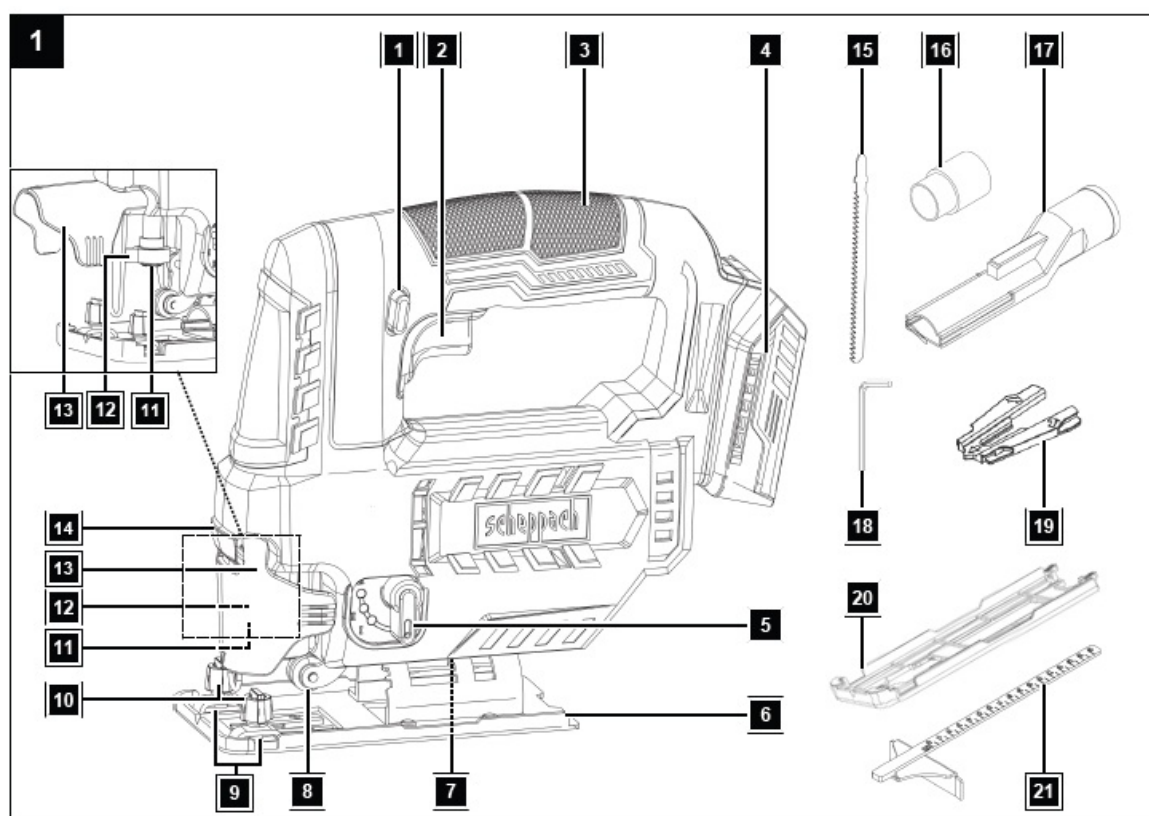
In accordance with the applicable product liability laws, the manufacturer of this product assumes no liability for damage to the product or caused by the product arising from:

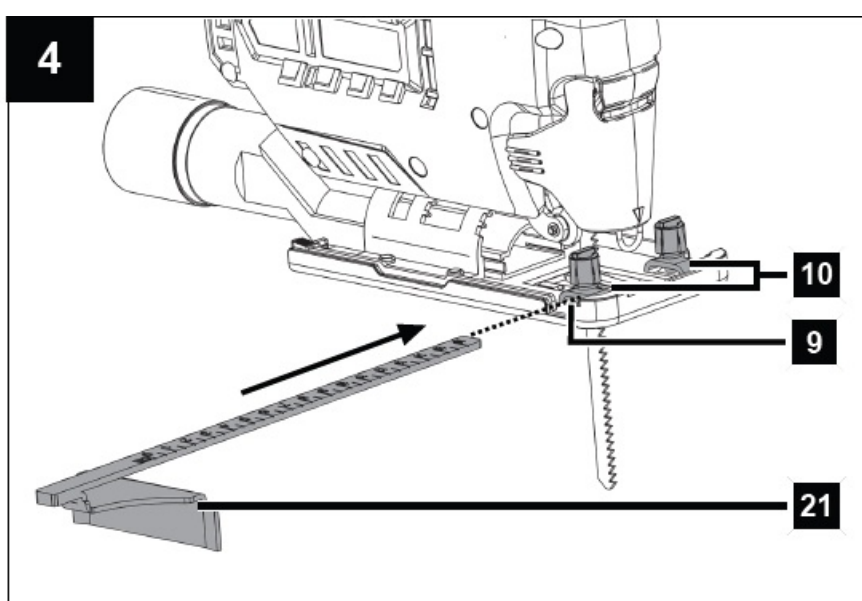
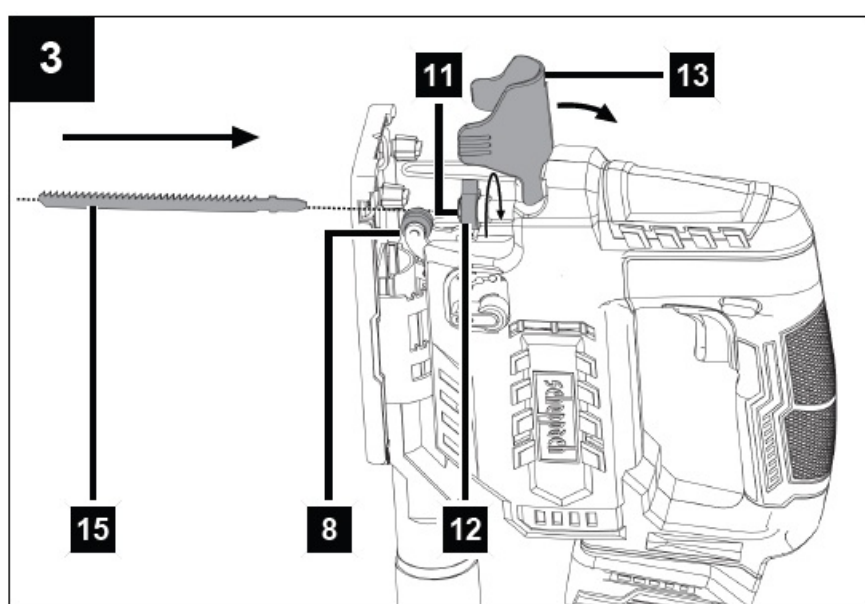
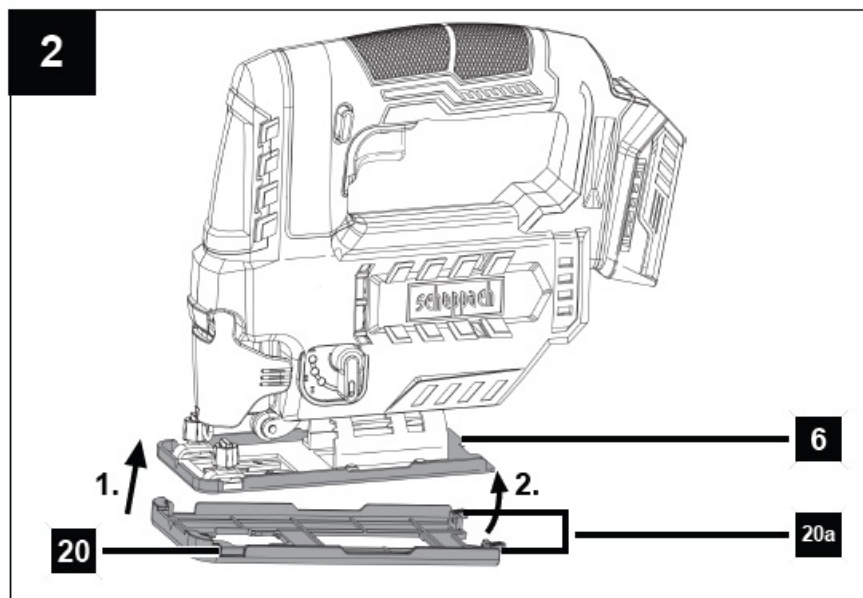
- Improper handling
- Non-compliance with the operating manual
- Repairs carried out by third parties, unauthorised specialists
- Installing and replacing non-original spare parts
- Improper use

Note:

The operating manual is part of this product.

It includes important instructions for the safe, proper and economic operation of the product, for avoiding danger, for minimising repair costs and downtimes and for increasing the reliability and extending the service life of the product. In addition to the safety instructions in this operating manual, you must also observe the regulations applicable to the operation of the product in your country. Familiarise yourself with all operating and safety instructions before using the product. Only operate the product as described and for the specified areas of application. Keep the operating manual in a good place and hand over all documents when passing the product on to third parties.

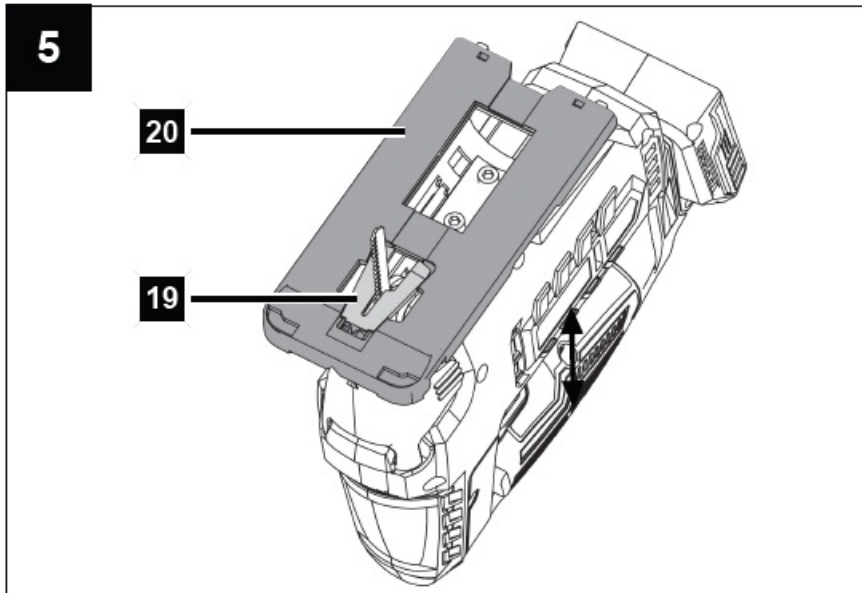
Product description (Fig. 1-10)



5

20

19

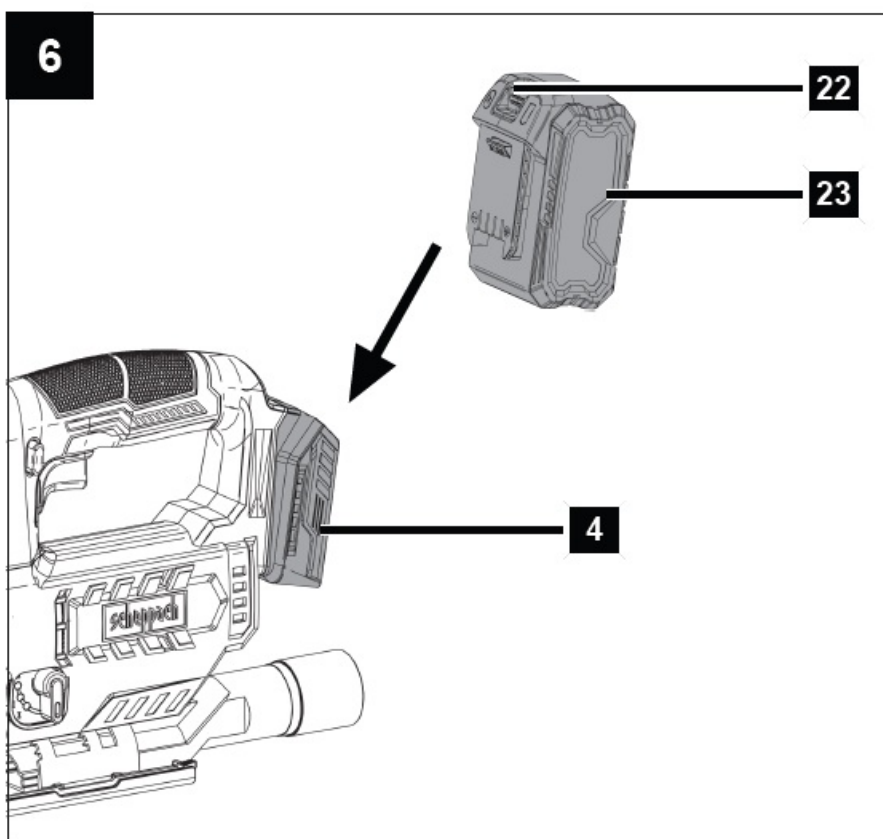


6

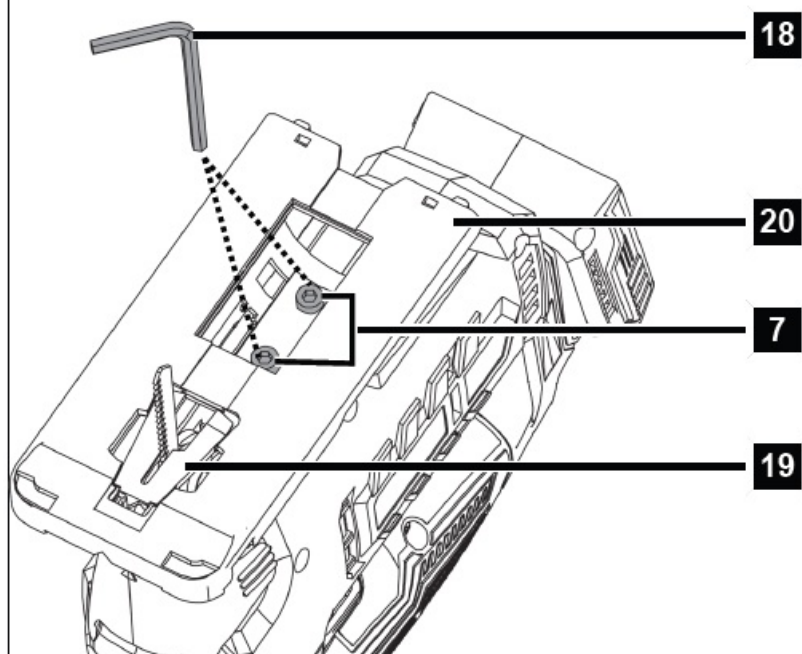
22

23

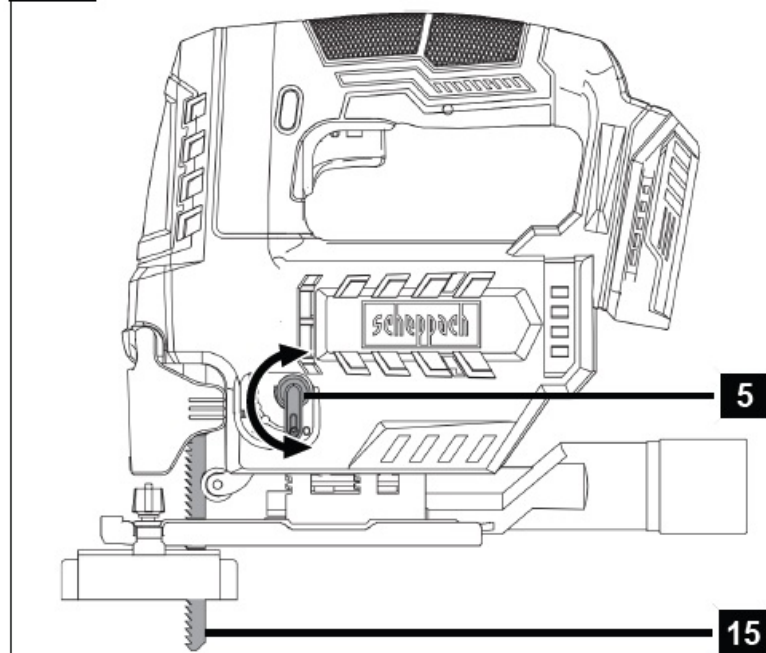
4



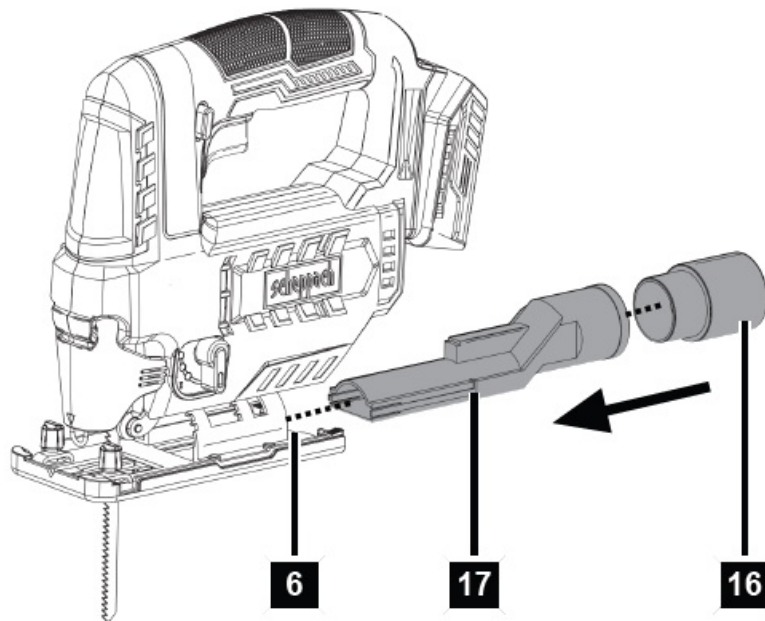
7



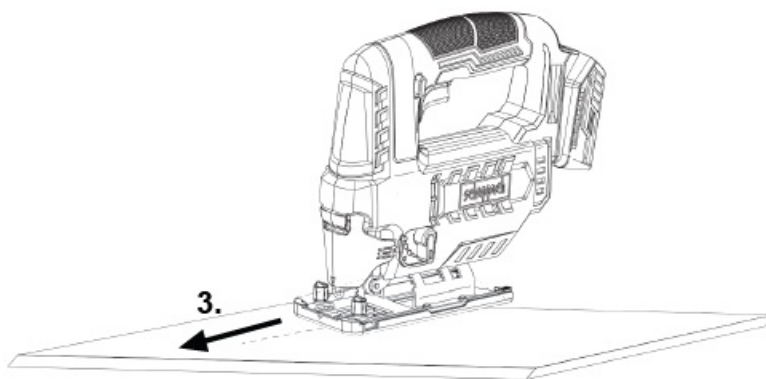
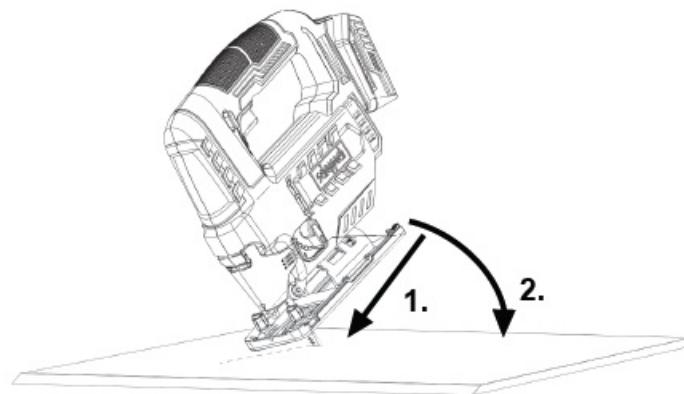
8



9



10



1. Switch lock
2. On/off switch
3. Handle
4. Battery mount
5. Pendulum stroke switch
6. Floor plate

7. Allen screw (not visible)
8. Guide roller
9. Insertion opening
10. Locking screws
11. Clamping chuck
12. Clamping lever
13. Protective cover
14. LED work lamp
15. Wood saw blade
16. Suction adapter
17. Suction connection
18. Allen key
19. Chip guard incl. line guidance
20. Sliding shoe
 - 20a. Latching lugs
21. Parallel stop
22. Release button (battery)
23. Battery*

* = not included in the scope of delivery!

Scope of delivery (Fig. 1)

Item	Quantity	Designation
15.	1 x	Saw blade for wood
16.	1 x	Suction adapter
17.	1 x	Suction connection
18.	1 x	Allen key
19.	1 x	Chip guard incl. line guidance
21.	1 x	Parallel stop
	1 x	Cordless jigsaw
	1 x	Operating manual

Proper use

The jigsaw is suitable for straight and curved cuts as well as mitre cuts up to 45° on angular workpieces made of synthetic, wood and light metal when the support is fixed. The product is permitted for private use in dry rooms only. The product may only be used in the intended manner. Any use beyond this is improper. The user/operator, not the manufacturer, is responsible for damages or injuries of any type resulting from this. An element of the intended use is also the observance of the safety instructions, as well as the assembly instructions and operating information in the operating manual.

Persons who operate and maintain the product must be familiar with the manual and must be informed about potential dangers. The liability of the manufacturer and resulting damages are excluded in the event of

modifications of the product. The product may only be operated with original parts and original accessories from the manufacturer. The safety, operating and maintenance specifications of the manufacturer, as well as the dimensions specified in the technical data, must be observed. Please note that our products were not designed with the intention of use for commercial or industrial purposes. We assume no guarantee if the product is used in commercial or industrial applications, or for equivalent work.

Explanation of the signal words in the operating manual



DANGER Signal word to indicate an imminently hazardous situation which, if not avoided, will result in death or serious injury.



WARNING Signal word to indicate a potentially hazardous situation which, if not avoided, could result in death or serious injury.



CAUTION Signal word to indicate a potentially hazardous situation which, if not avoided, could result in minor or moderate injury.

ATTENTION

Signal word to indicate a potentially hazardous situation which, if not avoided, could result in product or property damage.

Safety instructions

WARNING

Read all safety warnings, instructions, illustrations and specifications provided with this power tool. Failure to follow all instructions listed below may result in electric shock, fire and/or serious injury.

Save all warnings and instructions for future reference.

The term “power tool” in the warnings refers to your mains-operated (corded) power tool or battery-operated (cordless) power tool.

Work area safety

- Keep your work area clean and well-lit. Cluttered or dark areas invite accidents.
- Do not operate power tools in explosive atmospheres, such as in the presence of flammable liquids, gases or dust. Power tools create sparks which may ignite the dust or fumes.
- Keep children and bystanders away while operating a power tool. Distractions can cause you to lose control.

Electrical safety

- The connection plug of the electric tool must fit in-to the socket. Never modify the plug in any way. Do not use any adapter plugs with earthed (grounded) power tools. Unmodified plugs and matching outlets will reduce risk of electric shock.
- Avoid body contact with earthed or grounded surfaces, such as pipes, radiators, ranges and refrigerators.

There is an increased risk of electric shock if your body is earthed or grounded.

- Do not expose power tools to rain or wet conditions. Water entering a power tool will increase the risk of electric shock.
- Do not abuse the cord. Never use the cord for carrying, pulling or unplugging the power tool. Keep cord away from heat, oil, sharp edges or moving parts. Damaged or entangled cords increase the risk of electric shock.
- When operating a power tool outdoors, use an extension cord suitable for outdoor use. Use of a cord suitable for outdoor use reduces the risk of electric shock.
- If operating a power tool in a damp location is un-avoidable, use a residual current device (RCD) protected supply. Use of an RCD reduces the risk of electric shock.

Personal safety

- Stay alert, watch what you are doing and use common sense when operating a power tool. Do not use a power tool while you are tired or under the influence of drugs, alcohol or medication. A moment of inattention while operating power tools may result in serious personal injury.
- Wear personal protective equipment and always safety goggles. Protective equipment such as a dust mask, non-skid safety shoes, safety helmet or hearing protection used for appropriate conditions will reduce personal injuries.
- Prevent unintentional starting. Ensure the switch is in the off-position before connecting to power source and/or rechargeable battery, picking up or carrying the tool. Carrying power tools with your finger on the switch or energising power tools that have the switch on invites accidents.
- Remove any adjusting tools or spanners/keys before turning the power tool on. A wrench or a key left attached to a rotating part of the power tool may result in personal injury.
- Do not overreach. Keep proper footing and balance at all times. This enables better control of the power tool in unexpected situations.
- Dress properly. Do not wear loose clothing or jewellery. Keep your hair and clothing away from moving parts. Loose clothes, jewellery or long hair can be caught in moving parts.
- If devices are provided for the connection of dust extraction and collection facilities, ensure these are connected and properly used. Use of dust collection can reduce dust-related hazards.
- Do not let familiarity gained from frequent use of tools allow you to become complacent and ignore tool safety principles. A careless action can cause severe injury within a fraction of a second.

Power tool use and care

- Do not force the power tool. Use the correct power tool for your application. The correct power tool will do the job better and safer at the rate for which it was designed.
- Do not use the power tool if the switch does not turn it on and off. Any power tool that cannot be controlled with the switch is dangerous and must be repaired.
- Disconnect the plug from the power source and/or remove the battery pack, if detachable, from the power tool before making any adjustments, changing accessories, or storing power tools. Such precautionary measures reduce the risk of starting the power tool accidentally.
- Store idle power tools out of the reach of children and do not allow persons unfamiliar with the power tool or these instructions to operate the power tool. Power tools are dangerous in the hands of untrained users.
- Maintain power tools and attachments. Check for misalignment or binding of moving parts, breakage of parts

and any other condition that may affect the power tool's operation. If damaged, have the power tool repaired before use. Many accidents are caused by poorly maintained power tools.

- Keep cutting tools sharp and clean. Properly maintained cutting tools with sharp cutting edges are less likely to bind and are easier to control.
- Use electric tools, insertion tools, etc. according to these instructions. Take into account the working conditions and the work to be performed. Use of the power tool for operations different from those intended could result in a hazardous situation.
- Keep handles and grasping surfaces dry, clean and free from oil and grease. Slippery handles and grasping surfaces do not allow for safe handling and control of the tool in unexpected situations.

Battery tool use and care

- Recharge only with the charger specified by the manufacturer. A charger that is suitable for one type of battery pack may create a risk of fire when used with another battery pack.
- Use power tools only with specifically designated battery packs. Use of any other battery packs may create a risk of injury and fire.
- When battery pack is not in use, keep it away from other metal objects, like paper clips, coins, keys, nails, screws or other small metal objects, that can make a connection from one terminal to another. Shorting the battery terminals together may cause burns or a fire.
- Under abusive conditions, liquid may be ejected from the battery; avoid contact. If contact accidentally occurs, flush with water. If liquid contacts eyes, additionally seek medical help. Liquid ejected from the battery may cause irritation or burns.
- Do not use a battery pack or tool that is damaged or modified. Damaged or modified batteries may exhibit unpredictable behaviour resulting in fire, explosion or risk of injury.
- Do not expose a battery pack or tool to fire or excessive temperature. Exposure to fire or temperature above 130 °C may cause explosion.
- Follow all charging instructions and do not charge the battery pack or tool outside the temperature range specified in the instructions. Charging improperly or at temperatures outside the specified range may damage the battery and increase the risk of fire.

Service

- Have your power tool serviced by a qualified repair person using only identical replacement parts. This will ensure that the safety of the power tool is maintained.
- Never service damaged battery packs. Service of battery packs should only be performed by the manufacturer or authorized service providers.

Safety instructions for reciprocating saws

- When performing work during which the tool attachment can meet with concealed power lines or its own connection cable, hold the power tool by the insulated gripping surfaces. Contact with a live wire may make exposed metal parts of the power tool live and could give the operator an electric shock.
- Fasten and secure the workpiece to a stable base using clamps or other means. If the workpiece is held only by hand or against the body, it remains un-stable, which may result in a loss of control.

Further safety instructions for jigsaws

- Keep hands away from all moving parts. Never place your hands near the cutting area.
- Make sure that the base plate rests securely when sawing. A tilted saw blade can break or cause kick-back.
- Never switch on the product when the saw blade is jammed in the workpiece or is touching the material.
- Do not use damaged or deformed saw blades.
- Do not brake the insert tool after switching off by applying counter-pressure from the side. The insert tool can be damaged, break or cause a kickback.
- Avoid touching the insert tool or the workpiece immediately after processing because they may still be very hot and can cause skin burns.
- Check the material to be processed for foreign objects such as nails, screws etc. and remove them.
- Do not cut oversized workpieces.
- Before processing the workpiece, ensure that there is enough space behind the workpiece so that the insert tool does not hit the base, workbench, etc.
- Do not leave the product unattended.
- Do not let the product idle unnecessarily.
- Wait until the electrical tool has come to a stand-still before setting it down. The tool attachment can get caught and this can lead to loss of control over the electric tool.
- Secure the workpiece. Use clamping devices/bench vice to hold the workpiece in place. In this manner, it is held more securely than with your hand.
- Apply particular caution when sawing in existing walls or other areas that are not visible. The plunging saw blade can jam in concealed objects during sawing and result in kickback.

Residual risks

The product has been built according to state-of-the-art and the recognised technical safety rules. However, individual residual risks can arise during operation.

- Damage to hearing if the stipulated hearing protection is not worn.
- Residual risks can be minimised if the “Safety Instructions” and the “Intended Use” together with the operating manual as a whole are observed.
- Use the product in the way that is recommended in this operating manual. This is how to ensure that your product provides optimum performance.
- Furthermore, despite all precautions having been met, some non-obvious residual risks may still remain.

WARNING

This power tool generates an electromagnetic field during operation. This field can impair active or passive medical implants under certain circumstances. In order to prevent the risk of serious or deadly injuries, we recommend that persons with medical implants consult with their physician and the manufacturer of the medical implant prior to operating the power tool.

WARNING

In case of extended working periods, the operating personnel may suffer circulatory disturbances in their hands (vibration white finger) due to vibrations. Raynaud's syndrome is a vascular disease that causes the small blood vessels on the fingers and toes to cramp in spasms. The affected areas are no longer supplied with sufficient blood and therefore appear extremely pale. The frequent use of vibrating products can cause nerve damage in people whose circulation is impaired (e.g. smokers, diabetics). If you notice unusual adverse effects, stop working immediately and seek medical advice.


ATTENTION

The product is part of the 20V IXES series and may only be operated with batteries of this series. Batteries may only be charged with battery chargers of this series. Observe the manufacturer's instructions.

WARNING

Follow the safety and charging instructions and correct usage given in the instruction manual of your 20V IXES Series battery and charger. A detailed description of the charging process and further information are provided in this separate manual.

Technical data

Cordless jigsaw	C-JS220-X
Engine voltage	20 V 
Idle speeds n_0	0 – 2400 rpm
Saw stroke	19 mm
Depth of cut in wood	max. 100 mm
Depth of cut in metal	max. 6 mm
Cutting angle	
Middle:	0°
Left/right:	15°, 30°, 45°
Weight (without battery)	1.5 kg
Temperature	max. 50°C
• Charging	4 – 40 °C
• Operation	-20 – 50 °C
• Storage	0 – 45 °C

Subject to technical changes!

Noise and vibration**WARNING**

Noise can have serious effects on your health. If the machine noise exceeds 85 dB, please wear suitable hearing protection for you and persons in the vicinity.

The noise and vibration values have been determined in accordance with EN 62841-1.

Noise data

Sound pressure level L_{pA}	86 dB
Measurement uncertainty K_{pA}	5 dB
Sound power level L_{wA}	94 dB
Measurement uncertainty K_{wA}	5 dB

Vibration parameters

Vibration a_h	
in wood	5.677 m/s ²
Measurement uncertainty K	1.5 m/s ²
in metal	6.627 m/s ²
Measurement uncertainty K	1.5 m/s ²

The total vibration emission values specified and the device emissions values specified have been measured in accordance with a standardised test procedure and can be used for comparison of one electric tool with another. The total noise emission values specified and the total vibration emission values specified can also be used for an initial estimation of the load.

WARNING

The noise emission values and vibration emission value can vary from the specified values during the actual use of the power tool, depending on the type and the manner in which the electric tool is used, and in particular the type of workpiece being processed.

Try to keep the stress as low as possible. For example: Limit working time. In doing so, all parts of the operating cycle must be taken into account (such as times in which the power tool is switched off or times in which it is switched on, but is not running under a load).

Unpacking

WARNING

The product and the packaging material are not children's toys!

Do not let children play with plastic bags, films or small parts! There is a danger of choking or suffocating!

- Open the packaging and carefully remove the product.
- Remove the packaging material, as well as the packaging and transport safety devices (if present).
- Check whether the scope of delivery is complete.
- Check the product and accessory parts for transport damage. Immediately report any damage to the transport company that delivered the Product. Later claims will not be recognised.
- If possible, keep the packaging until the expiry of the warranty period.
- Familiarise yourself with the product by means of the operating manual before using for the first time.
- With accessories as well as wearing parts and replacement parts use only original parts. Spare parts can be obtained from your specialist dealer.
- When ordering please provide our article number as well as type and year of manufacture for the product.

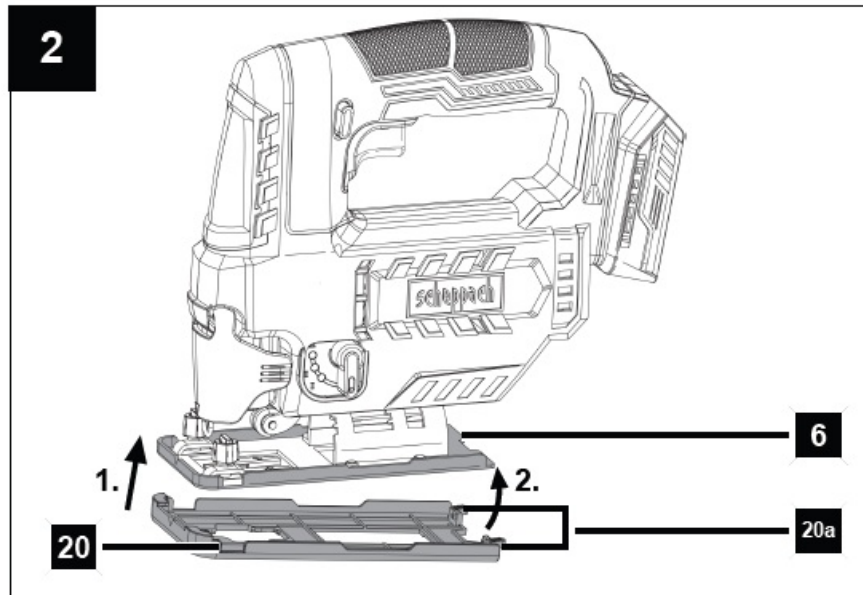
Assembly

CAUTION

Danger of injury!

Do not insert the battery until the battery-powered tool is ready for use.

Attaching/taking off the sliding shoe (20) (Fig. 2)



When working on workpiece surfaces that are susceptible to scratches, it is recommended to work with a sliding shoe (20).

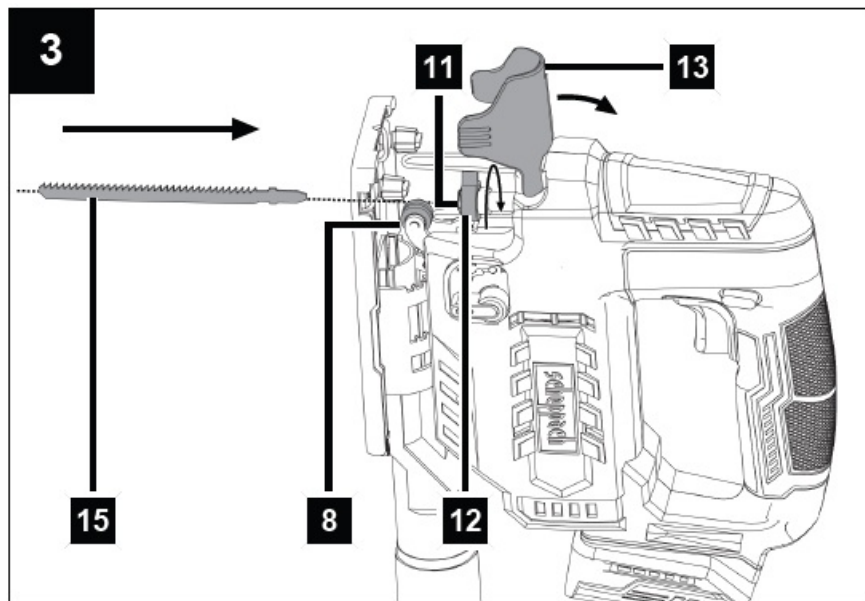
Attaching the sliding shoe

1. Place the sliding shoe (20) at the front of the base plate (6).
2. Now press the latches (20a) on the rear part of the sliding shoe (20) over the base plate (6).

Taking off the sliding shoe

1. Push the sliding shoe (20) off the base plate (6) at the latches (20a).
2. Take the sliding shoe (20) off the base plate (6) towards the front.

Inserting/removing the tool attachment (Fig. 3)



WARNING

Tool attachments may be sharp and become hot during use. Always wear protective gloves when handling the tool attachments.

CAUTION

Keep your hands away from the tool attachment when the product is in operation.

Note:

Only saw blades with a T-shaft mounting (single-cam shank) such as the saw blade supplied can be used.

Fitting the saw blade (Fig. 3)

Notes:

Ensure that the right saw blade for the material in question is always used.

Ensure that the chuck is free of splinters or other material residues.

1. Fold the protective cover (13) upwards.
2. Turn the clamping lever (12) as far to the left as possible and hold it in this position.
3. Insert the saw blade (15) into the chuck (11). When inserting the saw blade (15), ensure that the back of the saw blade is in the groove of the guide roller (8). Ensure that the saw blade (15) is secured correctly and that the teeth point in the direction of cutting.
4. Release the clamping lever (12).

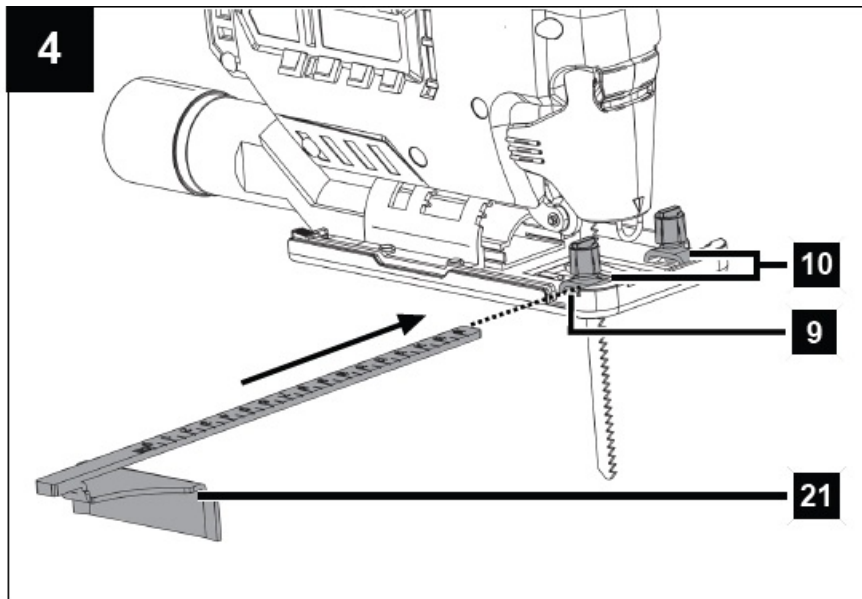
Note:

Pull lightly on the saw blade to check that it does not fall out during operation.

Removing the saw blade

1. Hold the saw blade (15) firmly.
2. Turn the clamping lever (12) as far to the left as possible and hold it in this position.
3. Take the saw blade (15) out of the chuck (11).
4. Release the clamping lever (12).

Fitting/removing the parallel stop (21) (Fig. 4)



Note:

The parallel stop can be fitted on both sides of the product.

Mounting the parallel stop

1. Loosen the locking screws (10).

Ensure that the locking screws (10) are not un-screwed completely.

2. Slide the parallel stop (21) through the insertion openings (9) with the marking facing upwards.
3. Tighten the locking screws (10) again.

Removing the parallel stop

1. Loosen the locking screws (10).

Ensure that the locking screws (10) are not un-screwed completely.

2. Pull the parallel stop (21) out of the insertion openings (9).

Taking off/attaching the chip guard (19) (Fig. 1, 5)

Note:

A chip guard can be used to prevent the surface from being torn out when sawing wood. The chip guard can only be used with certain saw blade types and only with a cutting angle of 0°. You can remove it if necessary, e.g. if you want to make a mitre cut.

Removing the chip guard

1. Remove the sliding shoe (20) with the fitted chip guard (19) from the base plate (6).
2. Push the chip guard (19) out of the recess in the sliding shoe (20).

Attaching the chip guard

1. Press the chip guard (19) through the recess in the sliding shoe (20) onto the base plate (6).

Inserting/removing the battery (23) into/from the battery mount (4)(Fig. 6)

Inserting the battery

1. Push the battery (23) into the battery mount (4). The battery (23) clicks into place audibly.

Removing the battery

1. Press the unlock button (22) of the battery (23) and remove it from the battery mount (4).

Test run (Fig. 1)

Note:

Before the first work and after each tool attachment change, carry out a test run without load. Switch off the product immediately if the tool attachment runs out of round, there is considerable vibration or abnormal noises are heard.

1. Before operation, check that the insert tool is correctly fitted, i.e. centred in the chuck (11).

Operation

The cordless rechargeable battery jigsaw has a pendulum lifting device, a working light and a parallel stop. The latches for mitre angles enable precise working. Please refer to the following descriptions for the function of the controls.

WARNING

Danger of injury!

Remove the battery from the power tool before carrying out any work on the power tool (e.g. maintenance, tool change, etc.) and when transporting and storing it. There is a risk of injury if the on/off switch is operated unintentionally.

ATTENTION

Make sure that the ambient temperature does not exceed 50°C and does not fall below -20°C during work.

ATTENTION

The product is part of the 20V IXES series and may only be operated with batteries of this series. Batteries may only be charged with battery chargers of this series. Observe the manufacturer's instructions.

Switching the product on/off (Fig. 1)

Notes:

The required stroke rate depends on the material and the working conditions, and can be determined by practical trials.

It is not necessary to keep the switch lock pressed after starting the product. The switch lock is intended to prevent accidental starting of the product.

Switching on

1. To switch on, press the switch lock (1) and then press the on/off switch (2).

Switching off

1. To switch off, release the on/off switch (2). Continuous operation is not possible.

LED work lamp (14)

This product is equipped with an LED work lamp to illuminate the immediate work area and improve visibility in poorly lit environments.

CAUTION

Do not look directly into the LED work lamp or the light source.

1. The LED work lamp (14) lights up automatically as soon as the product is switched on.

Overload switch-off

In the event of overloading, the motor will switch itself off. After a cool-down period (time varies) the motor can be switched back on again.

Setting the mitre angle (Fig. 1, 7)

Note:

Use of the chip guard is not possible with a mitre cut.

1. Remove the chip guard (19) from the sliding shoe (20), as described under 8.4, and the suction adapter (16).
2. Loosen the Allen screw (7) with the Allen key (18).
3. Pull the base plate (6) back slightly.
4. Set the base plate (6) to the desired position (-45° – $+45^{\circ}$).
There are a total of 7 levels that can be set (-45° , -30° , -15° , 0° , 15° , 30° and 45°).
5. Slide the base plate (6) forward into one of the latch stops.
6. Tighten the Allen screw (7) with the Allen key (18).

Setting the pendulum stroke (Fig. 8)

With the pendulum stroke switch (5) it is possible to set the pendulum movement of the saw blade (15).

The following positions are available for the pendulum stroke switch (5):

- 0 – No stroke
- 1 – Low stroke
- 2 – Moderate stroke
- 3 – Powerful stroke

The optimum stroke strength can be determined by practical testing, with the following recommendations:

- Fine and clean cutting edges can be achieved with little or no pendulum movement (level 1 or 0).
- For thin material, hard material (e.g. steel) and for curve cutting also use level 0.
- Soft material (wood, plastic, etc.): Set the pendulum to level 2 or 3.

Note:

With the pendulum stroke activated, work progress becomes increasingly faster.

Connecting external dust extraction unit (Fig. 1, 9)**Note:**

You can connect the suction hose of a vacuum cleaner (with an outer diameter of 32mm and 35mm) directly to the product without an adapter, if necessary.

Connecting an external dust extraction unit

1. Push the suction connection (17) into the rail between the product and the base plate (6) as far as it will go.
2. Connect an approved dust extraction unit (not included in the scope of delivery) to the extraction connection (17).
3. If the external dust extraction unit does not fit, use the additional suction adapter (16) if necessary.
4. Switch on the product as described under 9.1.

Taking off the external dust extraction unit

1. Take off the vacuum hose from the suction adapter (16) or from the suction connection (17).
2. Take the suction adapter (16) off from the product.
3. Remove the suction connection (17).

Plunge cuts (Fig. 1, 10)

Plunge cuts may only be made in soft materials such as wood, aerated concrete, plasterboard, etc. However, this requires some practice and is only possible with short saw blades. Plunge cuts are only permitted if the mitre angle is 0°.

1. Place the front edge of the base plate (6) flush on the workpiece.
2. Slowly saw into the workpiece with a downward motion until the base plate (6) rests completely on the workpiece.
3. Continue sawing along the cut line.
4. Switch off the saw and lift it off the workpiece when finished.

Metal cuts

- Use a suitable coolant (cutting oil) when machining metal. Violations can lead to significant blade wear. The underside of the workpiece can be greased instead of using a coolant. The scope of delivery includes a saw blade for wood, use suitable saw blades for metal cuts.

Working instructions

- Check the material to be processed for foreign objects such as nails, screws etc. and remove them.
- Ensure that the ventilation slots are not covered.
- Switch on the product and only then approach the material to be processed.
- Switch the product off immediately if the saw blade jams. Spread the already sawn gap with a suitable tool and

pull out the product.

- Adjust the saw blade and stroke rate to suit the material to be processed.
- Saw blades optimised for each application of your product are commercially available in different lengths.
- Saw the material with a steady feed.

Information on operation

* = not included in the scope of delivery!

1. Secure or fasten (if possible) the workpiece in a clamping device*.
2. Draw a line to indicate the direction towards which the saw blade is guided.
3. Securely hold the product by the handle.
4. Kickback is a sudden reaction to a hooked, jammed or incorrectly aligned saw blade, which leads to an uncontrolled rebounding of the saw, whereby it moves out of the workpiece in the direction of the operator.
5. Set the saw speed using the on/off switch.
6. Set the mitre angle as described under 9.3.
7. Set the pendulum stroke position as described under 9.4.
8. Advance the product very slowly when cutting curves.
9. Before pressing the on/off switch, make sure that the saw blade is correctly fitted, and that moving parts run smoothly.
10. Switch the product on.
11. Let the blade reach full speed before contacting the workpiece. This will reduce the risk of the work-piece being thrown.
12. Place the base plate on the workpiece, except for plunge cuts.
13. Move the product slowly along the pre-drawn line, pressing the base plate firmly against the workpiece.
14. Do not exert excessive pressure on the product. Let the product do the work.
15. Always switch the product off before placing it down and wait until the product has come to a standstill.

Cleaning and maintenance

WARNING

Have maintenance and repair tasks that are not described in this operating manual, carried out by a specialist workshop. Use only original spare parts. There is a risk of accident! Always perform maintenance and cleaning work with the battery removed. There is a danger of injury! Let the Product cool down before all maintenance and cleaning tasks. Elements of the engine are hot. There is a danger of injury and burning! The product can start unexpectedly and cause injuries.

- Remove the battery.
- Allow the product to cool down.
- Remove the tool attachment.

Cleaning

1. Keep protective devices, air vents and the motor housing as free of dust and dirt as possible. Rub the product clean with a clean cloth or blow it off with compressed air at low pressure. We recommend that you clean the product directly after every use.
2. Ventilation openings must always be free.

3. Do not use any cleaning products or solvents; they could attack the plastic parts of the product. Make sure that no water can penetrate the product interior.
4. Always keep the product clean, dry and free from oil or grease. Remove dust after each use and before storage.
5. If necessary, clean the saw blade holder with a brush or by blowing it out with compressed air.
6. Wipe any dirt off the lens with a dry cloth. Be careful to avoid scratching the LED lamp as this can severely reduce the light intensity.

Maintenance

1. Check the saw blade for obvious defects before each use and replace blunt, bent or otherwise damaged saw blades.

Storage

Preparation for storage

1. Remove the battery.
2. Clean and check the product for damage.

Store the product and its accessories in a dark, dry and frost-free place that is inaccessible to children. The optimum storage temperature is between 5°C and 30°C. Store the product in its original packaging. Cover the product to protect it from dust or moisture. Store the operating manual with the product.

Repair & ordering spare parts

With this product, it is necessary to note that the following parts are subject to natural or usage-related wear, or that the following parts are required as consumables.

ATTENTION

According to the German Product Liability Act, no liability is accepted for damage caused by improper repairs or by not using original spare parts. Such work should be performed by a customer service centre or an authorised specialists. The same applies to accessory parts. Spare parts and accessories can be obtained from our Service Centre. To do this, scan the QR code on the front page.

Ordering spare parts

Please provide the following information when ordering spare parts:

- Model designation
- Item number
- Type plate data

Spare parts / accessories

Battery pack SBP2.0 – Article no.:	7909201708
Battery pack SBP4.0 – Article no.:	7909201709
Battery charger SBC2.4A – Article no.:	7909201710
Battery charger SBC4.5A – Article no.:	7909201711
Battery charger SDBC2.4A – Article no.:	7909201712
Battery charger SDBC4.5A – Article no.:	7909201713
StarterKit SBSK2.0 – Article no.:	7909201720
StarterKit SBSK4.0 – Article no.:	7909201721


Disposal and recycling

Notes for packaging



The packaging materials are recyclable. Please dispose of packaging in an environmentally friendly manner.



Notes on the electrical and electronic equipment act [ElektroG]  **Waste electrical and electronic equipment does not belong in household waste, but must be collected and disposed of separately!**

- Used batteries or rechargeable batteries that are not installed permanently in the old appliance must be removed non-destructively before disposal! Their disposal is regulated by the battery act.
- Owners or users of electrical and electronic devices are legally obliged to return them after use.
- The end user is responsible for deleting their personal data from the old device being disposed of!
- The symbol of the crossed-out dustbin means that waste electrical and electronic equipment must not be disposed of with household waste.
- Waste electrical and electronic equipment can be handed in free of charge at the following places:
 - Public disposal or collection points (e.g. municipal works yards)
 - Points of sale of electrical appliances (stationary and online), provided that dealers are obliged to take them back or offer to do so voluntarily.
 - Up to three waste electrical devices per type of device, with an edge length of no more than 25 centimetres, can be returned free of charge to the manufacturer without prior purchase of a new device from the manufacturer or taken to another authorised collection point in your vicinity.
 - Further supplementary take-back conditions of the manufacturers and distributors can be obtained from the respective customer service.
- If the manufacturer delivers a new electrical appliance to a private household, the manufacturer can arrange for the free collection of the old electrical appliance upon request from the end user. Please contact the manufacturer's customer service for this.

- These statements only apply to devices installed and sold in the countries of the European Union and which are subject to the European Directive 2012/19/EU. In countries outside the European Union, different regulations may apply to the disposal of waste electrical and electronic equipment.

Notes on lithiumion batteries



Li-Ion Remove the battery before disposing of the device!

- Do not dispose of the battery in household waste, in a fire (risk of explosion) or in water. Damaged batteries can harm the environment and your health if toxic vapours or liquids escape.
- Defective or used batteries must be recycled in accordance with Directive 2006/66/EC.
- Hand in the device and the battery charger at a recycling centre. The plastic and metal parts used can be separated by type and thus recycled.
- Dispose of batteries when discharged. We recommend covering the poles with an adhesive strip to protect against a short circuit. Do not open the battery.
- Dispose of batteries according to local regulations. Return batteries to a used battery collection point where they can be recycled in an environmentally friendly manner. Ask your local waste disposal company about this.

Troubleshooting

Fault	Possible cause	Remedy
The product works with interruptions.	Internal loose contact	Repair must be carried out by customer service.
	On/off switch is defective.	
Low sawing performance	The saw blade is unsuitable for the workpiece to be machined.	Insert suitable saw blade
	Saw blade blunt	Insert new saw blade
	Incorrect sawing speed	Adjust saw speed
	Low battery power	Charge the battery (follow the separate operating instructions for the battery and battery charger).
Saw blade quickly becomes blunt	The saw blade is unsuitable for the workpiece to be machined.	Insert suitable saw blade
	Too much pressure applied	Reduce pressure
	Sawing speed too high	Reduce sawing speed

Fault	Possible cause	Remedy
The product cannot be started.	The battery power is too weak.	Charge the battery.
	The battery is not properly inserted.	Push the battery into the battery mount. The battery clicks into place audibly.

Warranty conditions -Scheppach 20V IXES series

Dear customer,

our products are subject to strict quality checks. However, if a product does not function perfectly, we deeply regret this and ask that you contact our customer service at the address specified below. We will also be glad to assist you by telephone via the service number. The following information is intended to help you to process and settle your claim without any problems.

For the assertion of warranty claims, the following applies:

1. The warranty conditions govern our additional manufacturer warranty services for purchasers (private end consumers) of new products. The statutory warranty claims are not affected by this warranty. This is the responsibility of the dealer who you purchased the product from.
2. The warranty service extends exclusively to defects in a new product purchased by you that are based on a material or manufacturing fault and is, at our discretion, limited to the repair of such defects free of charge or the replacement of the product (also replacement with a successor model, if necessary). Replaced products or parts shall become our property. Please note that our products were not designed for commercial, trade or professional use. A warranty claim is therefore not valid if the product has been used in commercial, trade or industrial operations within the warranty period or has been subjected to equivalent stress.
3. The following are excluded from our warranty services:
 - Damage to the product which was caused by non-observance of the assembly instructions, improper installation, non-observance of the operating instructions (e.g. connection to an incorrect mains voltage or type of current) or the maintenance and safety regulations or use of the product in unsuitable environmental conditions as well as by insufficient care and maintenance.
 - Damage to the product caused by misuse or improper application (such as overloading the product or using non-approved tools and accessories), penetration of foreign bodies into the product (such as sand, stones or dust), transport damage, use of force or external influences (such as damage caused if dropped).
 - Damage to the product or parts of the product which is due to intentional, normal (operational) or other natural wear as well as damage and/or wearing of wear parts.
 - Defects in the product which have been caused by the use of accessories, expansions or spare parts that are not original parts or are not used as intended.
 - Products on which changes or modifications have been made.
 - Minor deviations from the target characteristics which are irrelevant for the value and usability of the product.
 - Products on which unauthorised repairs have been carried out, in particular by an unauthorised third party.
 - If the marking on the product or the identification information of the product (machine label) is missing or illegible.
 - Products that are very dirty and are therefore refused by the service personnel.
 - Claims for damages and consequential damages are generally excluded from this warranty.
4. The warranty period is usually 5 years (12 months for batteries/rechargeable batteries) and starts from the date of purchase of the product. The date on the original purchase receipt is decisive. Warranty claims must be made immediately after becoming aware of them. The assertion of warranty claims after expiry of the warranty period is excluded. The repair or replacement of the product does not result in an extension of the warranty period, nor does this service initiate a new warranty period for the product or for any installed spare parts. This also applies when using an on-site service. The product concerned is to be cleaned and returned to the service

centre together with a copy of the purchase receipt, which must include the date of purchase and the product designation. If a product is sent in incomplete without the complete scope of delivery, the missing accessories will be charged / deducted in value if the product is exchanged or in the event of a refund. Partially or completely dismantled products cannot be accepted as a warranty claim. In the event of an unjustified complaint or if outside the warranty period, the purchaser shall generally bear the transport costs and the transport risk. Please report a warranty claim in advance to the service centre (see below). It is generally agreed upon that the defective product will be returned to the service address given below with a brief description of the fault by organised return or, in the case of repair outside the warranty period, with sufficient postage, taking the appropriate packaging and shipping guidelines into account. Please note that your product (depending on the model) will be free of all operating materials when returned for safety reasons. The product sent to our service centre must be packaged in such a way that damage to the product under complaint is avoided during transport. After successful repair / replacement, we will send the product back to you free of charge. If products cannot be repaired or replaced, a sum up to the purchase price of the defective product may be refunded at our own discretion, taking into account any deduction for wear and tear. These warranties are only for the benefit of the original private purchaser and cannot be assigned or transferred.

5. Extension of the warranty period to 10 years: Scheppach offers an additional warranty extension of 5 years on products of the Scheppach 20V series. Thus, the warranty period for these products totals 10 years. Batteries / rechargeable batteries, battery chargers and accessories are excluded from this. You can claim this warranty extension by registering your Scheppach product from this range at <https://garan-tie.scheppach.com> no later than 30 days from the date of purchase. After registering online successfully, you will receive confirmation for the item-related warranty extension.

6. In order to submit your warranty claim, please contact our service centre.

Preferably, please use our form on our homepage: <https://www.scheppach.com/de/service>

Please do not send us any products without first contacting and registering with our service centre. Contacting our service centre first is mandatory to claim these warranty promises. Warranty claims must be made before expiry of the warranty period within 14 days of discovery of the defect. For this purpose, the original purchase receipt and, if necessary, confirmation of the item-related warranty extension are required.

7. Processing time – We normally process complaint consignments within 14 days of receipt at our service centre. If, in exceptional cases, the processing time mentioned is exceeded, you will be informed in good time.

8. Wear parts are generally excluded from the warranty! – Wear parts are:

- supplied, attached and/or installed batteries / rechargeable batteries as well as
- all model-dependent wear parts (i.e. belts, saw blades, tool attachments, grinding discs, filters, carbon brushes etc., see operating manual). The warranty does not cover batteries or rechargeable batteries that are deeply discharged or those with damaged housing or battery terminals.

9. Cost estimate – Products that are not covered or no longer covered by the warranty will be repaired at extra cost. Upon request to our service centre, you can send in the defective products for a cost estimate and, if necessary, give the service centre approval for the repair in writing (by post, e-mail). No further processing will take place without approval for the repair.

10. Claims other than those mentioned above cannot be asserted.

The warranty conditions only apply in the current version at the time of the complaint and, if necessary, can be found on our homepage (www.scheppach.com).

In case of translations, the German version is decisive.

Scheppach GmbH · Günzburger Str. 69 · 89335 Ichenhausen (Germany)

- Tel: +800 4002 4002
- E-Mail: customerservice.GB@scheppach.com
- Internet: <https://www.scheppach.com>

We reserve the right to make changes to the warranty conditions at any time without prior notice.

EU Declaration of Conformity

Translation of the original Declaration of Conformity

Manufacturer:

Scheppach GmbH
Günzburger Straße 69
D-89335 Ichenhausen

We declare under our sole responsibility that the product described here complies with the applicable directives and standards.

- Brand: SCHEPPACH
- Item designation: CORDLESS JIGSAW C-JS220-X
- Item No. 5901817900

EU directives:

2014/30/EU, 2006/42/EC, 2011/65/EU*

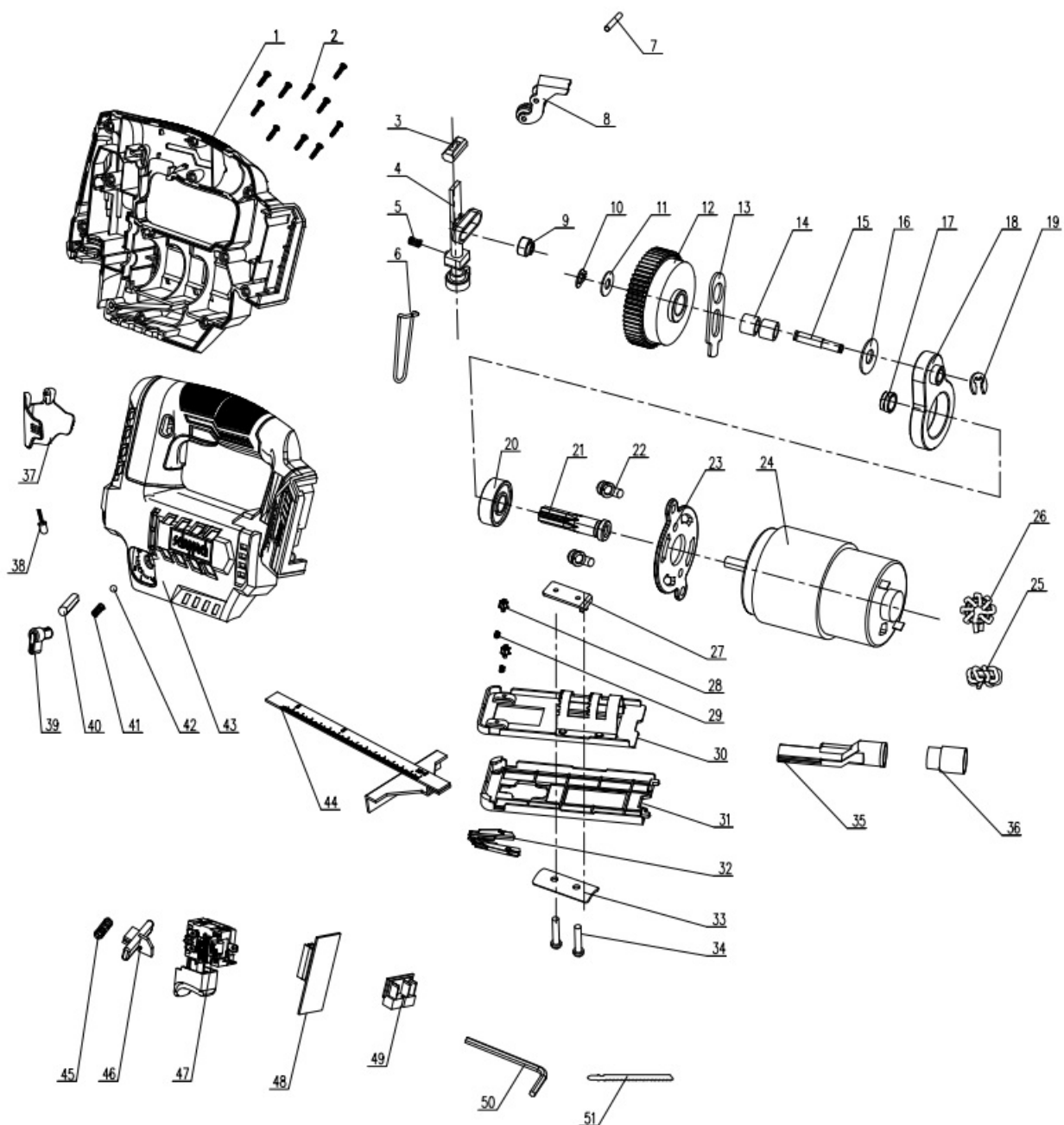
* The object of the declaration described above fulfils the regulations of the directive 2011/65/EU of the European Parliament and Council from 8th June 2011, on the restriction of the use of certain hazardous substances in electrical and electronic equipment.

Applied standards:

- EN 62841-1:2015/A11:2022;
- EN 62841-2-11:2016/A1:2020;
- EN IEC 55014-1:2021;
- EN IEC 55014-2:2021

Documentation authorised representative:

Dawid Hudzik
Günzburger Str. 69
D-89335 Ichenhausen
Ichenhausen, 02.01.2024
Simon Schunk
Division Manager Product Center
Andreas Pecher
Head of Project Management



SCHEPPACH GMBH

Günzburger Str. 69
D-89335 Ichenhausen
Status of the information

- Update: 01/2024
- Ident.-No.: 5901817900

Documents / Resources



[Scheppach C-JS220-X Cordless Jigsaw](#) [pdf] Instruction Manual
101020266-16-2024, 5901817900, 5901817900_0601, C-JS220-X Cordless Jigsaw, C-JS220-X, Cordless Jigsaw, Jigsaw

References

- [!\[\]\(1207edb9a08751d3d55970560645ed23_img.jpg\) ch.com](https://www.schwepp.ch)
- [!\[\]\(d7a34a706cfa4ef37c62a369101e1b36_img.jpg\) ch.com/de/service](https://www.schwepp.ch/de/service)
- [!\[\]\(7325769475e8f4bf67f57a0cbebc8ab9_img.jpg\) Scheppach Product Registration](#)
- [!\[\]\(1a468f12cdfc63dc07896d0781cf55ec_img.jpg\) scheppach | scheppach](#)
- [!\[\]\(a9a0baec8ceb7d7c04180806eca8d32a_img.jpg\) Kontakt & Service | scheppach | scheppach](#)
- [!\[\]\(c1ab807d6aebb565b3082513037b5622_img.jpg\) Scheppach Product Registration](#)
- [!\[\]\(083bb479299cb5e55cd99db0433ca6ba_img.jpg\) scheppach | scheppach](#)
- [!\[\]\(ede41f318336daae6cce8449321d11ea_img.jpg\) scheppach | scheppach](#)
- [!\[\]\(b0cd9d88e5935e4c3891570bfdded05c_img.jpg\) scheppach | scheppach](#)
- [!\[\]\(81bb4e52f43acc06353225c332f66031_img.jpg\) Kontakt & Service | scheppach | scheppach](#)
- [User Manual](#)

[Manuals+](#), [Privacy Policy](#)

This website is an independent publication and is neither affiliated with nor endorsed by any of the trademark owners. The "Bluetooth®" word mark and logos are registered trademarks owned by Bluetooth SIG, Inc. The "Wi-Fi®" word mark and logos are registered trademarks owned by the Wi-Fi Alliance. Any use of these marks on this website does not imply any affiliation with or endorsement.