



# **scheppach C-HTGS200-X Cordless Grass and Hedge Trimmer Instruction Manual**

[Home](#) » [Scheppach](#) » **scheppach C-HTGS200-X Cordless Grass and Hedge Trimmer Instruction Manual** 

## **Contents**

- [1 scheppach C-HTGS200-X Cordless Grass and Hedge Trimmer](#)
- [2 Specifications](#)
- [3 INSTALLATION AND USING INSTRUCTION](#)
- [4 Introduction](#)
- [5 Product Description](#)
- [6 Proper use](#)
- [7 Safety instructions](#)
- [8 Technical data](#)
- [9 Unpacking](#)
- [10 Operation](#)
- [11 Working instructions](#)
- [12 Cleaning and maintenance](#)
- [13 Maintenance](#)
- [14 Storage](#)
- [15 PARTS](#)
- [16 Disposal and recycling](#)
- [17 Troubleshooting](#)
- [18 Warranty](#)
- [19 FAQ](#)
- [20 Documents / Resources](#)
  - [20.1 References](#)
- [21 Related Posts](#)



**scheppach C-HTGS200-X Cordless Grass and Hedge Trimmer**



## Specifications

- **Art.Nº:** 5912205900
- **AusgabeNº:** 5912205900\_0601
- **Rev.Nº:** 24/11/2023
- **Model:** C-HTGS200-X

## Package Contents

- 1 x Grass cutting blade
- 1 x Hedge cutting blade
- 1 x Hedge cutting blade guard
- 1 x Grass cutting blade guard
- 1 x Cordless grass & hedge trimmer
- 1 x User manual

## INSTALLATION AND USING INSTRUCTION

### Explanation of the symbols on the product

Symbols are used in this manual to draw your attention to potential hazards. The safety symbols and the accompanying explanations must be fully understood. The warnings themselves will not rectify a hazard and cannot replace proper accident prevention measures.

	Before commissioning, read and observe the operating manual and safety instructions!
	Attention! Failure to observe the safety signs and warning information affixed to the product and failure to observe the safety and operating manual can result in serious injury or even death.
	Wear safety goggles.
	Wear safety gloves!
	Wear hearing protection.
	Do not expose the product to rain. The product may only be stationed, stored and operated in dry ambient conditions.
	Danger due to parts flying off while the engine is running.
	Attention! Risk of injury from running blades.
	Make sure that other persons maintain a sufficient safety distance.
	Guaranteed sound power level of the product.
	Lithium-ion battery
	The product complies with the applicable European directives.

## Introduction

### Manufacturer:

Scheppach GmbH  
Günzburger Straße 69  
D-89335 Ichenhausen

### Dear Customer

We hope your new product brings you much enjoyment and success.

**Note:** By the applicable product liability laws, the manufacturer of this product assumes no liability for damage to the product or caused by the product arising from:

- Improper handling

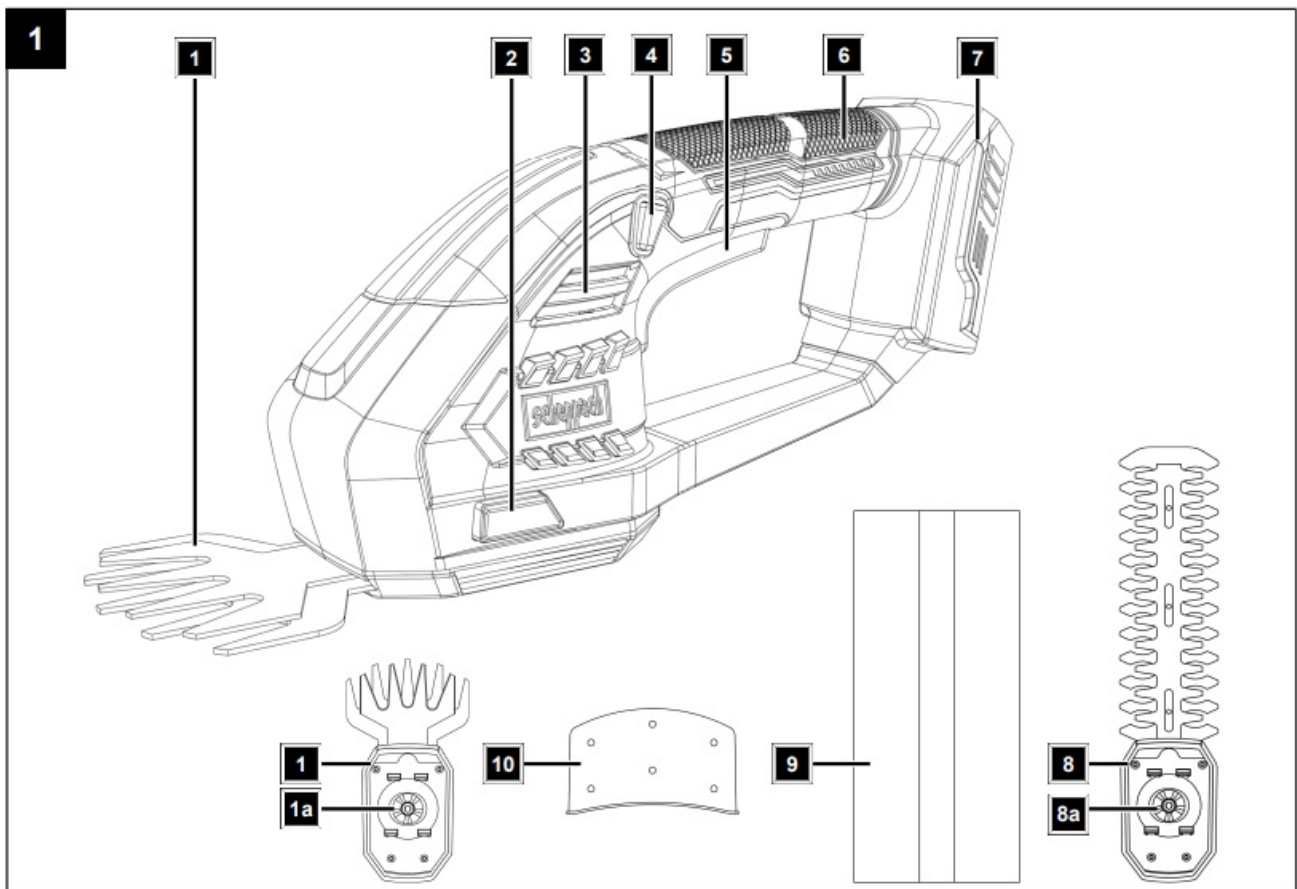
- Non-compliance with the operating manual
- Repairs carried out by third parties, unauthorized specialists
- Installing and replacing non-original spare parts
- Improper use

**Note:** The operating manual is part of this product.

It includes important instructions for the safe, proper, and economical operation of the product, for avoiding danger, for minimizing repair costs and downtimes, and for increasing the reliability and extending the service life of the product. In addition to the safety instructions in this operating manual, you must also observe the regulations applicable to the operation of the product in your country.

Familiarise yourself with all operating and safety instructions before using the product. Only operate the product as described and for the specified areas of application. Keep the operating manual in a good place and hand over all documents when passing the product on to third parties.

## Product Description



1. Grass cutting blade
2. Grass-cutting blade sprocket
3. Release buttons for blade attachment
4. Motor/housing
5. Switch lock
6. On/off switch
7. Handle
8. Battery mount
9. Hedge cutting blade
10. Hedge-cutting blade sprocket
11. Hedge-cutting blade guard

12. Grass-cutting blade guard
13. Release button (battery)
14. Battery\*

- not included in the scope of delivery!

### **Scope of delivery (Fig. 1)**

#### **Item/Quantity/Designation**

- 1. 1 x Grass cutting blade
- 8. 1 x Hedge cutting blade
- 9. 1 x Hedge cutting blade guard
- 10. 1 x Grass cutting blade guard
- 1 x Cordless grass & hedge trimmer
- 1 x Operating manual

### **Proper use**

- The product is only intended for cutting and trimming thin shoots on hedges, bushes, and ornamental shrubs and for cutting grass on edges and in small areas.
- The product may only be used in the intended manner. Any use beyond this is improper. The user/operator, not the manufacturer, is responsible for damages or injuries of any type resulting from this.
- An element of the intended use is also the observance of the safety instructions, as well as the assembly instructions and operating information in the operating manual.
- Persons who operate and maintain the product must be familiar with the manual and must be informed about potential dangers.
- The liability of the manufacturer and resulting damages are excluded in the event of modifications to the product.
- The product may only be operated with original parts and original accessories from the manufacturer.
- The safety, operating, and maintenance specifications of the manufacturer, as well as the dimensions specified in the technical data, must be observed.
- Please note that our products were not designed with the intention of use for commercial or industrial purposes. We assume no guarantee if the product is used in commercial or industrial applications, or for equivalent work.

### **Explanation of the signal words in the operating manual**

**DANGER:** Signal word to indicate an imminently hazardous situation which, if not avoided, will result in death or serious injury.

**WARNING:** Signal word to indicate a potentially hazardous situation which, if not avoided, could result in death or serious injury.

#### **CAUTION**

Signal word to indicate a potentially hazardous situation which, if not avoided, could result in minor or moderate injury.

## **ATTENTION**

Signal word to indicate a potentially hazardous situation which, if not avoided, could result in product or property damage.

## **Safety instructions**

### **WARNING**

- Read all safety warnings, instructions, illustrations, and specifications provided with this power tool.
- Failure to follow all instructions listed below may result in electric shock, fire, and/or serious injury.

### **Save all warnings and instructions for future reference.**

The term “power tool” in the warnings refers to your mains-operated (corded) power tool or battery-operated (cordless) power tool.

#### **1. Work area safety**

1. **a)** Keep your work area clean and well-lit. Cluttered or dark areas invite accidents.
2. **b)** Do not operate power tools in explosive atmospheres, such as in the presence of flammable liquids, gases, or dust. Power tools create sparks that may ignite the dust or fumes.
3. **c)** Keep children and bystanders away while operating a power tool. Distractions can cause you to lose control.

#### **2. Electrical safety**

1. **a)** The connection plug of the electric tool must fit into the socket. Never modify the plug in any way. Do not use any adapter plugs with earthed (grounded) power tools. Unmodified plugs and matching outlets will reduce the risk of electric shock.
2. **b)** Avoid body contact with earthed or grounded surfaces, such as pipes, radiators, ranges, and refrigerators. There is an increased risk of electric shock if your body is earthed or grounded.
3. **c)** Do not expose power tools to rain or wet conditions. Water entering a power tool will increase the risk of electric shock.
4. **d)** Do not abuse the cord. Never use the cord for carrying, pulling, or unplugging the power tool. Keep the cord away from heat, oil, sharp edges, or moving parts. Damaged or entangled cords increase the risk of electric shock.
5. **e)** When operating a power tool outdoors, use an extension cord suitable for outdoor use. Use of a cord suitable for outdoor use reduces the risk of electric shock.
6. **f)** If operating a power tool in a damp location is unavoidable, use a residual current device (RCD) protected supply. The use of an RCD reduces the risk of electric shock.

#### **3. Personal safety**

1. **a)** Stay alert, watch what you are doing, and use common sense when operating a power tool. Do not use a power tool while you are tired or under the influence of drugs, alcohol, or medication. A moment of inattention while operating power tools may result in serious personal injury.
2. **b)** Wear personal protective equipment and always safety goggles. Protective equipment such as a dust mask, non-skid safety shoes, safety helmet, or hearing protection used for appropriate conditions will reduce personal injuries.
3. **c)** Prevent unintentional starting. Ensure the switch is in the off-position before connecting to a power source and/or rechargeable battery, picking up or carrying the tool. Carrying power tools with your finger

on the switch or energizing power tools that have the switch on invites accidents.

4. **d)** Remove any adjusting tools or spanners/keys before turning the power tool on. A wrench or a key left attached to a rotating part of the power tool may result in personal injury.
5. **e)** Do not overreach. Keep proper footing and balance at all times. This enables better control of the power tool in unexpected situations.
6. **f)** Dress properly. Do not wear loose clothing or jewelry. Keep your hair and clothing away from moving parts. Loose clothes, jewelry, or long hair can be caught in moving parts.
7. **g)** If devices are provided for the connection of dust extraction and collection facilities, ensure these are connected and properly used. The use of dust collection can reduce dust-related hazards.
8. **h)** Do not let familiarity gained from frequent use of tools allow you to become complacent and ignore tool safety principles. A careless action can cause severe injury within a fraction of a second.

#### **4. Power tool use and care**

1. **a)** Do not force the power tool. Use the correct power tool for your application. The correct power tool will do the job better and safer at the rate for which it was designed.
2. **b)** Do not use the power tool if the switch does not turn it on and off. Any power tool that cannot be controlled with the switch is dangerous and must be repaired.
3. **c)** Disconnect the plug from the power source and/or remove the battery pack, if detachable, from the power tool before making any adjustments, changing accessories, or storing power tools. Such precautionary measures reduce the risk of starting the power tool accidentally.
4. **d)** Store idle power tools out of the reach of children and do not allow persons unfamiliar with the power tool or these instructions to operate the power tool. Power tools are dangerous in the hands of untrained users.
5. **e)** Maintain power tools and attachments. Check for misalignment or binding of moving parts, breakage of parts, and any other condition that may affect the power tool's operation. If damaged, have the power tool repaired before use. Many accidents are caused by poorly maintained power tools.
6. **f)** Keep cutting tools sharp and clean. Properly maintained cutting tools with sharp cutting edges are less likely to bind and are easier to control.
7. **g)** Use electric tools, insertion tools, etc. according to these instructions. Take into account the working conditions and the work to be performed. Use of the power tool for operations different from those intended could result in a hazardous situation.
8. **h)** Keep handles and grasping surfaces dry, clean, and free from oil and grease. Slippery handles and grasping surfaces do not allow for safe handling and control of the tool in unexpected situations.

#### **5. Service**

1. **a)** Only have your power tool repaired by qualified specialists and only with original spare parts. This will ensure that the safety of the power tool is maintained.

#### **Using and handling the cordless tool**

- **a)** Only charge the batteries with battery chargers recommended by the manufacturer. A battery charger that is suitable for a particular type of battery poses a fire hazard when used with other batteries.
- **b)** Only use the batteries in power tools that are designed for them. The use of other batteries can lead to injuries and a risk of fire.
- **c)** Keep the unused battery away from paper clips, coins, keys, nails, screws, or other small metal objects that could cause a short circuit between the contacts. A short circuit between the contacts of the battery could result

in burns or fires.

- **d)** Liquid may leak from the battery if used incorrectly. Avoid contact with it. In case of accidental contact, rinse with water. If the liquid gets into your eyes, seek additional medical attention. Leaking battery fluid may cause skin irritation or burns.
- **e)** Do not use a damaged or modified battery. Damaged or modified batteries can behave unpredictably and cause fire, explosion, or injury.
- **f)** Do not expose a battery to fire or excessive temperature. Fire or temperatures above 130°C may cause an explosion.
- **g)** Follow all charging instructions and never charge the battery or rechargeable tool outside the temperature range specified in the operating manual. Incorrect charging or charging outside the approved temperature range can destroy the battery and increase the risk of fire.
- **h)** Never attempt to service damaged batteries. Any type of battery maintenance shall be carried out only by the manufacturer or an authorized customer service center.

### **Safety instructions for hedge trimmers**

- **a)** Keep all body parts away from the blade. Do not attempt to remove cuttings or hold material to be cut while the blade is running. The blades continue to move after the switch is turned off. A moment of carelessness when using the hedge trimmer can result in serious injury.
- **b)** Carry the hedge trimmer by the handle with the blades stationary and take care not to operate the switch. Carrying the hedge trimmer correctly reduces the risk of accidental operation and injuries from the blade.
- **c)** Always put the cover over the blade when transporting or storing the hedge trimmer. Handling the hedge trimmer correctly reduces the risk of injury from the blade.
- **d)** Make sure all switches are off and the battery is removed before removing trapped clippings or servicing the product. Unexpected operation of the hedge trimmer when removing trapped material can cause serious injury.
- **e)** Hold the hedge trimmer only by the insulated gripping surfaces, as the cutting blade could hit hidden power lines or its own mains cable. Contact between the blade and a live power line can also electrify metal device parts and lead to an electric shock.
- **f)** Keep any main cables away from the cutting area. Wires may be hidden in hedges and bushes and could be accidentally cut by the blade.
- **g)** Do not use the hedge trimmer in bad weather, especially if there is a risk of thunderstorms. This reduces the risk of being struck by lightning.

### **Additional safety instructions**

- Always wear safety gloves, safety goggles, hearing protection, sturdy shoes, and long trousers when working with this product.
- The hedge trimmer is intended for work where the operator stands on the ground and not on a ladder or other unstable standing surface.
- Electrical hazard, remain at least 10 m from overhead wires.

Do not attempt to loosen a jammed/blocked cutter bar until you have switched off the product and removed the battery. There is a danger of injury!

The blades must be checked regularly for wear and have them resharpened. Blunt blades overload the product. Any resulting damage is not covered by the warranty.



If you are interrupted while working with the product, first finish the current operation and then switch off the product.

Store idle power tools out of the reach of children and do not allow persons unfamiliar with the power tool or these instructions to operate the power tool. Power tools are dangerous in the hands of untrained users.

### Residual risks

The product has been built according to state-of-the-art and recognized technical safety rules. However, individual residual risks can arise during operation.

- Cutting injuries.
- Damage to eyes if the stipulated eye protection is not worn.
- Damage to hearing if the stipulated hearing protection is not worn.
- Residual risks can be minimized if the “Safety Instructions” and the “Intended Use” together with the operating manual as a whole are observed.
- Use the product in the way that is recommended in this operating manual. This is how to ensure that your product provides optimum performance.
- Furthermore, despite all precautions having been met, some non-obvious residual risks may remain.

**WARNING:** This power tool generates an electromagnetic field during operation. This field can impair active or passive medical implants under certain circumstances. To prevent the risk of serious or deadly injuries, we recommend that persons with medical implants consult with their physician and the manufacturer of the medical implant before operating the power tool.

**WARNING:** In case of extended working periods, the operating personnel may suffer circulatory disturbances in their hands (vibration white finger) due to vibrations.

Raynaud’s syndrome is a vascular disease that causes the small blood vessels on the fingers and toes to cramp in spasms. The affected areas are no longer supplied with sufficient blood and therefore appear extremely pale. The frequent use of vibrating products can cause nerve damage in people whose circulation is impaired (e.g. smokers, diabetics). If you notice unusual adverse effects, stop working immediately and seek medical advice.

**ATTENTION:** The product is part of the 20V IXES series and may only be operated with batteries of this series. Batteries may only be charged with battery chargers of this series. Observe the manufacturer’s instructions.

**WARNING:** Follow the safety and charging instructions and correct usage given in the instruction manual of your 20V IXES Series battery and charger. A detailed description of the charging process and further information are provided in this separate manual.

### Technical data

Cordless grass & hedge trimmer	C-HTGS200-X
Engine Voltage	20 V
Idle speed n0	1200rpm
Grass-cutting blade width	90 mm
Hedge cutting blade cutting length	200 mm
Weight (without battery, with both sets of blade and saw chain)	0.96 kg

Subject to technical changes

## Noise and vibration

**WARNING:** Noise can have serious effects on your health. If the machine noise exceeds 85 dB, please wear suitable hearing protection for you and persons in the vicinity.

The noise and vibration values have been determined by EN 62841-1.

### Noise data

#### Grass cutting blade

Sound pressure LpA	78.9 dB
Sound power LwA	86.9 dB
Measurement uncertainty KwA	3 dB

#### Hedge cutting blade

Sound pressure LpA	75.8 dB
Sound power LwA	83.8 dB
Measurement uncertainty KwA	3 dB

### Vibration parameters

Vibration ah Grassing cutting blade	1.309 m/s <sup>2</sup>
Vibration ah Hedge cutting blade	2.553 m/s <sup>2</sup>
Measurement uncertainty K	1.5 m/s <sup>2</sup>

The total vibration emission values specified and the device emissions values specified have been measured by a standardized test procedure and can be used for comparison of one electric tool with another.

The total noise emission values specified and the total vibration emission values specified can also be used for an initial estimation of the load.

**WARNING:** The noise emission values and vibration emission values can vary from the specified values during the actual use of the power tool, depending on the type and how the electric tool is used, and in particular the type of workpiece being processed.

Try to keep the stress as low as possible. For example: Limit working time. In doing so, all parts of the operating cycle must be taken into account (such as times in which the power tool is switched off or times in which it is switched on, but is not running under a load).

## Unpacking

**WARNING:** The product and the packaging material are not children's toys! Do not let children play with plastic bags, films, or small parts! There is a danger of choking or suffocating!

- Open the packaging and carefully remove the product.
- Remove the packaging material, as well as the packaging and transport safety devices (if present).

- Check whether the scope of delivery is complete. Check the product and accessory parts for transport damage. Immediately report any damage to the transport company that delivered the Product. Later claims will not be recognized.
- If possible, keep the packaging until the expiry of the warranty period.
- Familiarise yourself with the product using the operating manual before using it for the first time.
- With accessories as well as wearing parts and replacement parts use only original parts. Spare parts can be obtained from your specialist dealer.
- When ordering please provide our article number as well as the type and year of manufacture for the product.

## Operation

The cordless grass & hedge trimmer is a combination product with two interchangeable cutting devices. When used as a hedge shear (hedge trimmer), a hedge-cutting blade is used as the cutting device. For safety reasons, the teeth are rounded horizontally and offset to reduce the danger of injury. When used as grass shears, a grass-cutting blade with several teeth is used as the cutting device.

### **WARNING:** Danger of injury!

Remove the battery from the power tool before carrying out any work on the power tool (e.g. maintenance, tool change, etc.) and when transporting and storing it. There is a risk of injury if the on/off switch is operated unintentionally.

### **WARNING:** Electric shock and damage to the product are possible!

Contact with a live cable during cutting can result in electric shock. Cutting into foreign objects can cause damage to the cutter bar.

- Scan hedges and bushes for hidden objects, such as live wires, wire fences, and plant supports, before cutting

**ATTENTION:** Make sure that the ambient temperature does not exceed 50°C and does not fall below -20°C during work.

**ATTENTION:** The product is part of the 20V IXES series and may only be operated with batteries of this series. Batteries may only be charged with battery chargers of this series. Observe the manufacturer's instructions.

## Inserting/replacing cutting blades (Fig. 3)

**CAUTION:** Wear protective gloves when handling the blades!

### **To remove the blade:**

1. Press the release buttons (2) on the motor/housing (3).
2. Pull the cutting blade slightly downwards and remove it from the motor/housing (3).

### **To replace blades:**

**Note:** When reinserting, make sure that the sprockets fit correctly (1a/8a).

1. Insert the grass-cutting blade (1) or the hedge-cutting blade (8) and push it towards the motor/housing (3) until it audibly engages.
2. Check that the cutting blade is correctly seated.

## **Inserting/removing the battery (11) into/from the battery mount (7)(Fig. 2)**

### **Inserting the battery**

1. Push the battery (12) into the battery mount (7). The battery (12) clicks into place audibly.

### **Removing the battery**

1. Press the unlock button (11) of the battery (12) and remove it from the battery mount (7).

## **Switching the product on/off (Fig. 1)**

### **Switching on**

**Notes:** Before switching on, make sure that the product does not touch any objects.

1. Pull the blade guard (9/10) off the grass-cutting blade (1) or the hedge-cutting blade (8) before switching on the product.
2. First press the switch lock (4) and then the on/off switch (5).

### **Note:**

It is not necessary to keep the switch lock pressed after starting the product. The switch lock is intended to prevent accidental starting of the product.

### **Switching off**

1. To switch it off, simply release the on/off switch (5).

**CAUTION:** After switching off, the product will run on. Wait until the product has come to a complete stop.

### **Overload protection**

### **Note:**

In the event of overloading, the motor will switch itself off. After a cool-down period (time varies) the motor can be switched back on again.

## **Working instructions**

**Note:** Some noise pollution from this product is unavoidable. Postpone noisy work to approved and designated times. If necessary, adhere to rest periods.

**WARNING:** Electric shock and damage to the product are possible!

Contact with a live cable during cutting can result in electric shock. Cutting into foreign objects can cause damage to the cutter bar. Scan hedges and bushes for hidden objects, such as live wires, wire fences, and plant supports, before cutting

- Check the product for obvious defects such as loose, worn or damaged parts before each use.
- Check that the screws in the cutter bar are tight.
- Blunt blades reduce the cutting performance and im-pair the work process! Sure signs of blunt blades are

leaving an indentation, reduced performance, and a poor cutting pattern.

- Securely hold the product by the handle.
- Switch on the product and only then approach the material to be processed.
- Check the material to be processed for foreign objects such as nails, screws etc., and remove them.
- Do not exert excessive pressure on the product. Let the product do the work.
- Blunt, bent or damaged cutter bars must be replaced.

## Hedge trimming

- Cut the sides of the hedges first (from bottom to top) and then the top.
- Cut the sides of the hedges such that the hedge is slightly narrower at the top.
- Use a handsaw or secateurs to cut thicker branches.
- Both the hedge trimming blade and the grass trimming blade can be used for hedge trimming.

## Cutting grass and shrubs

- Grass is best cut when it is dry and not too long.
- Move the product evenly forward or up and down in an arc.
- The double-sided cutter bar allows cutting in both directions or using a pendulum movement, swinging the trimmer back and forth.
- The grass-cutting blade is also suitable for cutting shrubs.
- When cutting long grass, work gradually from the top and make small cuts.

## Instructions for use

For cutting hedges at a uniform height:

- Stretch some garden twine along the hedge at the desired height.
- Cut the hedge directly above the twine. Recommended trimming times (Western Europe)
  - **Leaf hedge:** June and October
  - **Conifer hedge:** April and August
  - **Fast-growing hedge:** around every 6 weeks from May

Pay attention to nesting birds in the hedge. Delay the hedge cut or leave this area out if this is the case.

## Cleaning and maintenance

### WARNING

- Have maintenance and repair tasks that are not described in this operating manual, carried out by a specialist workshop. Use only original spare parts.
- There is a risk of an accident! Always perform maintenance and cleaning work with the battery removed. There is a danger of injury! Let the Product cool down before all maintenance and cleaning tasks. Elements of the engine are hot. There is a danger of injury and burning!

The product can start unexpectedly and cause injuries.

- Remove the battery.
- Allow the product to cool down.
- Remove the tool attachment.

**CAUTION:** Wear protective gloves when handling the blades!

**CAUTION:** After switching off, the product will run on. Wait until the product has come to a complete stop.

## Cleaning

1. Clean the cutter bar with an oily cloth after each use.
2. Oil the cutter bar after each use with the oil can or a spray.
3. Never immerse the product in water or other liquids for cleaning.
4. Do not splash the product with water.
5. Keep protective devices, air vents, and the motor housing as free of dust and dirt as possible. Rub the product clean with a clean cloth or blow it off with compressed air at low pressure. We recommend that you clean the product directly after every use.
6. Ventilation openings must always be free.
7. Do not use any cleaning products or solvents; they could attack the plastic parts of the product. Make sure that no water can penetrate the product interior.

## Maintenance

1. Check the product for obvious defects such as loose, worn or damaged parts before each use.
2. Check that the screws in the cutter bar are tight.
3. Check the covers and protective devices for damage and correct seating. Replace them if necessary.
4. You can smooth out slight nicks on the cutting teeth yourself. To do this, draw an oil stone along the cutting edges. Only sharp cutting teeth provide a good cutting performance.
5. Blunt, bent, or damaged cutter bars must be replaced.

## Storage

### Preparation for storage

1. Remove the battery.
2. Clean and check the product for damage.
3. For transport or when storing the product, cover the blade with the blade guard.
4. Fertiliser and other garden chemicals contain substances that can have a severely corrosive effect on the metal parts. Do not store the product in the vicinity of these substances.

Store the product and its accessories in a dark, dry, and frost-free place that is inaccessible to children.

The optimum storage temperature is between 5°C and 30°C.

Store the product in its original packaging.

Cover the product to protect it from dust or moisture. Store the operating manual with the product.

## Repair & ordering spare parts

With this product, it is necessary to note that the following parts are subject to natural or usage-related wear, or

that the following parts are required as consumables.

## ATTENTION

- According to the German Product Liability Act, no liability is accepted for damage caused by improper repairs or by not using original spare parts.
- Such work should be performed by a customer service center or an authorized specialist. The same applies to accessory parts.

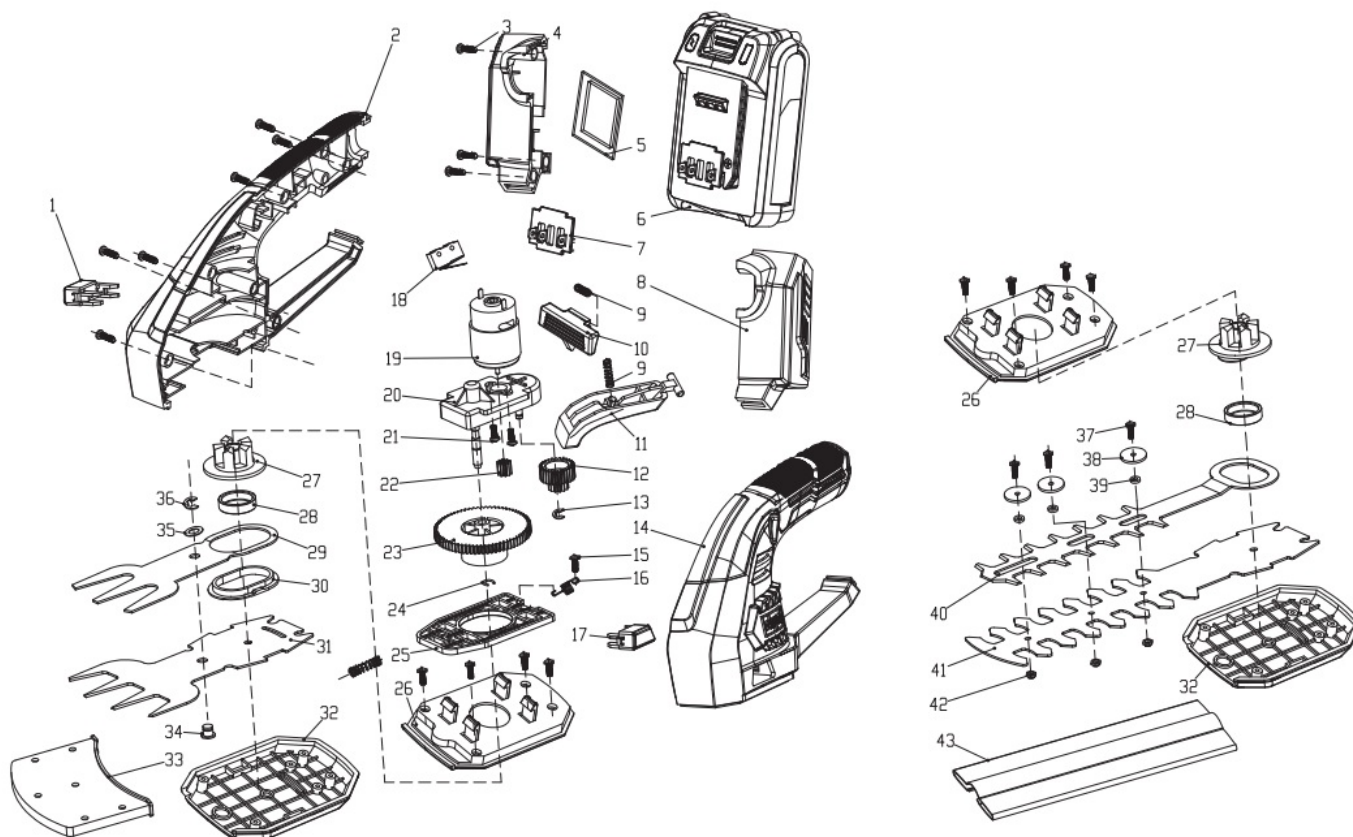
Spare parts and accessories can be obtained from our Service Centre. To do this, scan the QR code on the front page.

## Ordering spare parts

Please provide the following information when ordering spare parts

- Model designation
- Item number
- Type plate data

## PARTS



## Spare parts/accessories

Battery pack SBP2.0 – Article no.:	7909201708
Battery pack SBP4.0 – Article no.:	7909201709
Battery charger SBC2.4A – Article no.:	7909201710
Battery charger SBC4.5A – Article no.:	7909201711
Battery charger SDBC2.4A – Article no.:	7909201712
Battery charger SDBC4.5A – Article no.:	7909201713
StarterKit SBSK2.0 – Article no.:	7909201720
StarterKit SBSK4.0 – Article no.:	7909201721

## Disposal and recycling

### Notes for packaging

The packaging materials are recyclable. Please dispose of packaging in an environmentally friendly manner.

Notes on the electrical and electronic equipment act [ElektroG] Waste electrical and electronic equipment does not belong in household waste, but must be collected and disposed of separately!

- Used batteries or rechargeable batteries that are not installed permanently in the old appliance must be removed non-destructively before disposal! Their disposal is regulated by the Battery Act.
- Owners or users of electrical and electronic devices are legally obliged to return them after use.
- The end user is responsible for deleting their data from the old device being disposed of!
- The symbol of the crossed-out dustbin means that waste electrical and electronic equipment must not be disposed of with household waste.
- Waste electrical and electronic equipment can be handed in free of charge at the following places:
  - Public disposal or collection points (e.g. municipal works yards)
  - Points of sale of electrical appliances (stationary and online), provided that dealers are obliged to take them back or offer to do so voluntarily.
  - Up to three waste electrical devices per type of device, with an edge length of no more than 25 centimeters, can be returned free of charge to the manufacturer without prior purchase of a new device from the manufacturer or taken to another authorized collection point in your vicinity.
  - Further supplementary take-back conditions of the manufacturers and distributors can be obtained from the respective customer service.
- If the manufacturer delivers a new electrical appliance to a private household, the manufacturer can arrange for the free collection of the old electrical appliance upon request from the end user. Please contact the manufacturer's customer service for this.
- These statements only apply to devices installed and sold in the countries of the European Union and which are subject to the European Directive 2012/19/EU. In countries outside the European Union, different regulations may apply to the disposal of waste electrical and electronic equipment.

### Notes on lithium-ion batteries

Remove the battery before disposing of the device!



- Do not dispose of the battery in household waste, in a fire (risk of explosion) or water. Damaged batteries can harm the environment and your health if toxic vapours or liquids escape.
- Defective or used batteries must be recycled by Directive 2006/66/EC.
- Hand in the device and the battery charger at a recycling center. The plastic and metal parts used can be separated by type and thus recycled.
- Dispose of batteries when discharged. We recommend covering the poles with an adhesive strip to protect against a short circuit. Do not open the battery.
- Dispose of batteries according to local regulations. Return batteries to a used battery collection point where they can be recycled in an environmentally friendly manner. Ask your local waste disposal company about this.

## Troubleshooting

Fault	Possible cause	Remedy
The product cannot be started.	The battery power is too weak.	Charge the battery.
	The battery is not properly inserted.	Push the battery into the battery mount. The battery clicks into place audibly.
	On/off switch defective	Please contact our service department.
	Motor defective.	
The product works with interruptions.	Internal loose contact.	Please contact our service department.
	On/off switch defective	
The cutter bar becomes hot.	Cutter bar blunt.	Check the cutter bar, sharpen, or contact our service department.
	The cutter bar has nicks.	
	Too much friction due to lack of lubrication.	Oil the cutter bar.

Poor cutting results	Cutter bar blunt.	Check the cutter bar, sharpen or contact our service department.
	Too much friction due to lack of lubrication.	Oil the cutter bar.
	Dirty cutter bar.	Clean the cutter bar.
	Poor cutting technique.	Observe the working instructions.

## Warranty

### Warranty conditions Scheppach 20V IXES series

Revision date 11/07/2023

#### Dear customer,

our products are subject to strict quality checks. However, if a product does not function perfectly, we deeply regret this and ask that you contact our customer service at the address specified below. We will also be glad to assist you by telephone via the service number. The following information is intended to help you to process and settle your claim without any problems.

For the assertion of warranty claims, the following applies:

1. The warranty conditions govern our additional manufacturer warranty services for purchasers (private end consumers) of new products. The statutory warranty claims are not affected by this warranty. This is the responsibility of the dealer who you purchased the product from.
2. The warranty service extends exclusively to defects in a new product purchased by you that are based on a material or manufacturing fault and is, at our discretion, limited to the repair of such defects free of charge or the replacement of the product (also re-placement with a successor model, if necessary). Replaced products or parts shall become our property. Please note that our products were not designed for commercial, trade or professional use.

A warranty claim is therefore not valid if the product has been used in commercial, trade, or industrial operations within the warranty period or has been subject to equivalent stress.

3. The following are excluded from our warranty services:
  - Damage to the product that was caused by non-observance of the assembly instructions, improper installation, non-observance of the operating instructions (e.g. connection to an incorrect mains voltage or type of current) or the maintenance and safety regulations or use of the product in unsuitable environmental conditions as well as by insufficient care and maintenance.
  - Damage to the product caused by misuse or improper application (such as overloading the product or using non-approved tools and accessories), penetration of foreign bodies into the product (such as sand, stones or dust), transport damage, use of force or external influences (such as damage caused if dropped).
  - Damage to the product or parts of the product which is due to intentional, normal (operational), or other natural wear as well as damage and/or wearing of worn parts.
  - Defects in the product that have been caused by the use of accessories, expansions, or spare parts that are not original or are not used as intended.
  - Products on which changes or modifications have been made.
  - Minor deviations from the target characteristics which are irrelevant to the value and usability of the product.
  - Products on which unauthorized repairs have been carried out, in particular by an unauthorized third party.
  - If the marking on the product or the identification information of the product (machine label) is missing or illegible.
  - Products that are very dirty and are therefore refused by the service personnel.
  - Claims for damages and consequential damages are generally excluded from this warranty.
4. The warranty period is usually 5 years (12 months for batteries/rechargeable batteries) and starts from the date of purchase of the product. The date on the original purchase receipt is decisive. Warranty claims must be made immediately after becoming aware of them. The assertion of warranty claims after the expiry of the warranty period is excluded. The repair or replacement of the product does not result in an extension of the warranty period, nor does this service initiate a new warranty period for the product or any in-stalled spare parts. This also applies when using an on-site service. The product concerned is to be cleaned and returned to the service center together with a copy of the purchase receipt, which must include the date of purchase and the product designation. If a product is sent in incomplete without the complete scope of delivery, the missing accessories will be charged/deducted in value if the product is exchanged or in the event of a refund. Partially or completely dismantled products cannot be accepted as a warranty claim. In the event of an

unjustified complaint or if outside the warranty period, the purchaser shall generally bear the transport costs and the transport risk. Please report a warranty claim in advance to the service center (see below). It is generally agreed upon that the defective product will be returned to the service address given below with a brief description of the fault by organized return or, in the case of repair outside the warranty period, with sufficient postage, taking the appropriate packaging and shipping guidelines into account.

Please note that your product (depending on the model) will be free of all operating materials when returned for safety reasons. The product sent to our service center must be packaged in such a way that damage to the product under complaint is avoided during transport. After successful repair/replacement, we will send the product back to you free of charge. If products cannot be repaired or replaced, a sum up to the purchase price of the defective product may be refunded at our discretion, taking into account any deduction for wear and tear. These warranties are only for the benefit of the original private purchaser and cannot be assigned or transferred.

5. Extension of the warranty period to 10 years: Scheppach offers an additional warranty extension of 5 years on products of the Scheppach 20V series. Thus, the warranty period for these products totals 10 years. Batteries / rechargeable batteries, battery chargers, and accessories are excluded from this. You can claim this warranty extension by registering your Scheppach product from this range at <https://garantie.scheppach.com> no later than 30 days from the date of purchase. After registering online successfully, you will receive confirmation for the item-related warranty extension.

6. In order to submit your warranty claim, please contact our service center.

Preferably, please use our form on our homepage: <https://www.scheppach.com/de/service>

Please do not send us any products without first contacting and registering with our service center. Contacting our service center first is mandatory to claim these warranty promises. Warranty claims must be made before the expiry of the warranty period within 14 days of discovery of the defect. For this purpose, the original purchase receipt and, if necessary, confirmation of the item-related warranty extension are required.

7. Processing time – We normally process complaint consignments within 14 days of receipt at our service center. If, in exceptional cases, the processing time mentioned is exceeded, you will be informed in good time.

8. **Wear parts are generally excluded from the warranty! – Wear parts are:**

- **a)** supplied, attached, and/or installed batteries / rechargeable batteries as well as
- **b)** all model-dependent wear parts (i.e. belts, saw blades, tool attachments, grinding discs, filters, carbon brushes, etc., see operating manual). The warranty does not cover batteries or rechargeable batteries that are deeply discharged or those with damaged housing or battery terminals.

9. Cost estimate – Products that are not covered or no longer covered by the warranty will be repaired at extra cost. Upon request to our service center, you can send in the defective products for a cost estimate and, if necessary, give the service center approval for the repair in writing (by post, or e-mail). No further processing will take place without approval for the repair.

10. Claims other than those mentioned above cannot be asserted.

**The warranty conditions** only apply in the current version at the time of the complaint and, if necessary, can be found on our homepage ([www.scheppach.com](https://www.scheppach.com)).

In the case of translations, the German version is decisive.

## FAQ

### Frequently Asked Questions

- **Q: Is the battery included in the package?**

- A: No, the battery is not included in the package. It needs to be purchased separately.

- **Q: How long does it take to charge the battery fully?**

- A: The charging time may vary, but it is recommended to charge the battery for at least X hours for optimal performance.

**Scheppach GmbH · Günzburger Str. 69 · 89335 Ichenhausen (Germany)**

- **Tel:** +800 4002 4002 ·
- **E-Mail:** customerservice.[GB@scheppach.com](mailto:GB@scheppach.com)
- **Internet:** <https://www.scheppach.com>
- We reserve the right to make changes to the warranty conditions at any time without prior notice.

**EU Declaration of Conformity**

Translation of the original Declaration of Conformity

- **Brand:** SCHEPPACH
- **Art. designation:** CORDLESS GRASS AND HEDGE TRIMMERS-HTGS200-X
- **Item No.:** 5912205900

**EU directives:**

2014/30/EU, 2006/42/EC, 2000/14/EC\_2005/88/EC, 2011/65/EU

The object of the declaration described above fulfills the regulations of the directive 2011/65/EU of the European Parliament and Council from 8th June 2011, on the restriction of the use of certain hazardous substances in electrical and electronic equipment.

**Applied standards:**

EN 62841-1:2015/A11:2021; EN 62841-4-2:2019; EN IEC 55014-1:2021; EN IEC 55014-2:2021

**Documentation authorised representative:**

- David Rümpelein
- Günzburger Str. 69
- D-89335 Ichenhausen
- Ichenhausen, 24.11.2023

**SCHEPPACH GMBH**

Günzburger Str. 69  
D-89335 Ichenhausen

**Stand der Informationen**

Update: 11/2023 · Ident.-No.: 5912205900

[www.scheppach.com](https://www.scheppach.com)

---

## Documents / Resources



[scheppach C-HTGS200-X Cordless Grass and Hedge Trimmer](#) [pdf] Instruction Manual  
C-HTGS200-X Cordless Grass and Hedge Trimmer, C-HTGS200-X, Cordless Grass and Hedge Trimmer, Grass and Hedge Trimmer, Hedge Trimmer, Trimmer

## References

- [ch.com](#)
- [pach.com](#)
- [scheppach | scheppach](#)
- [Kontakt & Service | scheppach | scheppach](#)
- [Scheppach Product Registration](#)
- [scheppach | scheppach](#)
- [scheppach | scheppach](#)
- [scheppach | scheppach](#)
- [Kontakt & Service | scheppach | scheppach](#)
- [User Manual](#)

[Manuals+.](#) [Privacy Policy](#)

This website is an independent publication and is neither affiliated with nor endorsed by any of the trademark owners. The "Bluetooth®" word mark and logos are registered trademarks owned by Bluetooth SIG, Inc. The "Wi-Fi®" word mark and logos are registered trademarks owned by the Wi-Fi Alliance. Any use of these marks on this website does not imply any affiliation with or endorsement.