



scheppach Air Force 3 Portable Compressor Instruction Manual

[Home](#) » [Scheppach](#) » scheppach Air Force 3 Portable Compressor Instruction Manual

*scheppach Air Force 3 Portable Compressor
Instruction Manual*

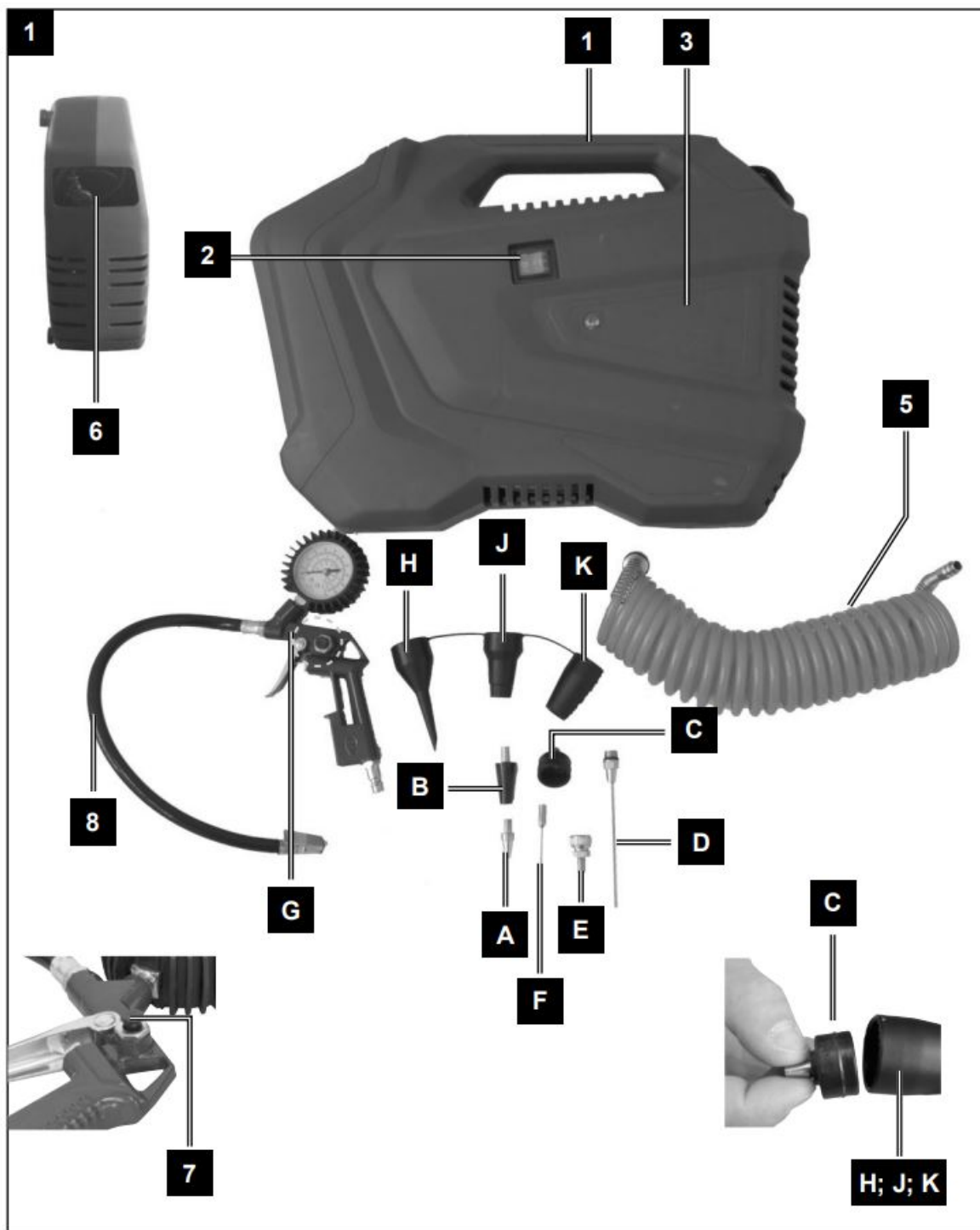
Art.Nr.
5906127901
AusgabeNr.
5906127850
Rev.Nr.
29/05/2018

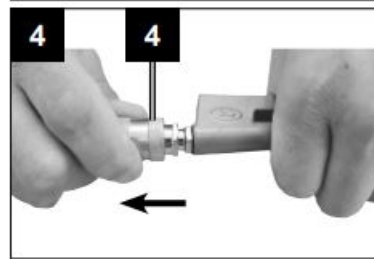
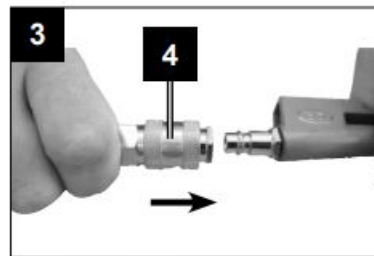
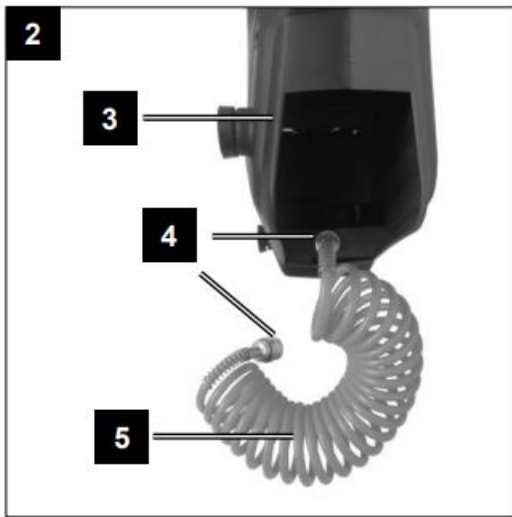


scheppach



Air Force 3





Contents [[hide](#)

- 1 Explanation of the symbols on the equipment**
- 2 Introduction**
- 3 Device description**
- 4 Unpacking**
- 5 Intended use**
- 6 Safety information**
- 7 ADDITIONAL SAFETY INSTRUCTIONS**
- 8 Technical data**
- 9 Residual risks**
- 10 Attachment and operation**
- 11 Electrical connection**
- 12 Cleaning, maintenance, and storage**
- 13 Storage**
- 14 Transport**
- 15 Disposal and recycling**
- 16 Troubleshooting**
- 17 Documents / Resources**
 - 17.1 References**
- 18 Related Posts**

Explanation of the symbols on the equipment



Read and follow the operating and safety instructions before you start working with this power tool.



Wear ear-muffs. The impact of noise can cause damage to hearing.



Wear safety goggles!



Beware of hot parts!



Beware of electrical voltage!



Warning! The unit is equipped with an automatic start control. Keep others away from the work area of the device!



Do not open the cock before the air hose is attached.

Introduction

MANUFACTURER:

scheppach
Fabrikation von Holzbearbeitungsmaschinen GmbH
Günzburger Straße 69
D-89335 Ichenhausen

DEAR CUSTOMER,

we hope your new tool brings you much enjoyment and success.

NOTE: According to the applicable product liability laws, the manufacturer of the device does not assume liability for damages to the product or damages caused by the product that occurs due to:

- Improper handling,
- Non-compliance of the operating instructions,
- Repairs Introduction by third parties, not by authorized service technicians,
- Installation and replacement of non-original spare parts,
- Application other than specified,
- A breakdown of the electrical system that occurs due to the non-compliance of the electric regulations and VDE regulations 0100, DIN 57113 / VDE0113.

We recommend: Read through the complete text in the operating instructions before installing and commissioning the device. The operating instructions are intended to help the user to become familiar with the machine and take advantage of its application possibilities in accordance with the recommendations. The operating instructions contain important information on how to operate the machine safely, professionally and economically, how to avoid danger, costly repairs, reduce downtimes and how to increase reliability and service life of the machine. In addition to the safety regulations in the operating instructions, you have to meet the applicable regulations that apply for the operation of the machine in your country. Keep the operating instructions package with the machine at all times and store it in a plastic cover to protect it from dirt and moisture. Read the instruction manual each time before operating the machine and carefully follow its information. The machine can only be operated by persons who were instructed concerning the operation of the machine and who are informed about the associated dangers. The minimum age requirement must be complied with. In addition to the safety notices contained in this operating manual and the particular instructions for your country, the generally recognised technical regulations for the operation of identical devices must be complied with.

Device description

1. Transport handle
2. ON/OFF switch
3. Compressor housing
4. Quick-lock coupling
5. Pressure hose
6. Power cord

- A Universal adapter, for valves with diameter ca. 6 mm
- B Universal adapter, for valves with diameter ca. 9 mm
- C Adapter for H, J, K
- D Blow-out adapter
- E Valve adapter, e.g. For bicycle valves
- F Ball needle
- G Tyre pressure gauge
- H Deflating adapter
- J Screw-on valve adapter
- K Universal adapter

Unpacking

- Open the packaging and remove the device carefully.
- Remove the packaging material as well as the packaging and transport bracing (if available).
- Check that the delivery is complete.
- Check the device and accessory parts for transport damage.
- If possible, store the packaging until the warranty period has expired.

ATTENTION!

The device and packaging materials are not toys! Children must not be allowed to play with plastic bags, film and small parts! There is a risk of swallowing and suffocation!


Intended use

The compressor is designed to generate compressed air for compressed-air driven tools which can be driven with an air volume of up to approx. 180 l/min (e.g. tire inflator, blow-out pistol and paint spray gun). Due to the limited air output it is not possible to use the compressor to drive tools with very high air consumption (for example orbital sanders, rod grinders and hammer screwdrivers).

The equipment is to be used only for its prescribed purpose. Any other use is deemed to be a case of misuse. The user / operator and not the manufacturer will be liable for any damage or injuries of any kind caused as a result of this.

Please note that our equipment has not been designed for use in commercial, trade or industrial applications. Our warranty will be voided if the equipment is used in commercial, trade or industrial businesses or for equivalent purposes.

Safety information

 **Attention!** The following basic safety actions must be taken when using this compressor in order to protect the user from electric shocks and the risk of injury and fire. Read and follow these instructions before using the equipment.

Safe work

1. Keep the work area orderly Disorder in the work area can lead to accidents.
2. Take environmental influences into account Do not expose electric tools to rain. Do not use electric tools in a damp or wet environment. There is a risk of electric shock! Make sure that the work area is well-illuminated. - Do not use electric tools where there is a risk of fire or explosion.
3. Protect yourself from electric shock
Avoid physical contact with earthed parts (e.g. pipes, radiators, electric ranges, cooling units).
4. Keep children away Do not allow other persons to touch the equipment or cable, keep them away from your work area.
5. Securely store unused electric tools Unused electric tools should be stored in a dry, elevated or closed location out of the reach of children.
6. Do not overload your electric tool They work better and more safely in the specified output range.
7. Wear suitable clothing Do not wear wide clothing or jewellery, which can become entangled in moving parts. - Rubber gloves and non-slip shoes are recommended when working outdoors. Tie long hair back in a hair net.
8. Do not use the cable for purposes for which it is not intended Do not use the cable to pull the plug out of the

outlet. Protect the cable from heat, oil and sharp edges.

9. Take care of your tools Keep your compressor clean in order to work well and safely. Follow the maintenance instructions. Check the connection cable of the electric tool regularly and have it replaced by a recognised specialist when damaged. Check extension cables regularly and replace them when damaged.
10. Pull the plug out of the outlet During non-use of the electric tool or prior to maintenance and when replacing tools such as saw blades, bits, milling heads.
11. Avoid inadvertent starting Make sure that the switch is switched off when plugging the plug into an outlet.
12. Use extension cables for outdoors Only use approved and appropriately identified extension cables for use outdoors. Only use cable reels in the unrolled state.
13. Remain attentive Pay attention to what you are doing. Remain sensible when working. Do not use the electric tool when you are distracted.
14. Check the electric tool for potential damage Protective devices and other parts must be carefully inspected to ensure that they are fault-free and function as intended prior to continued use of the electric tool. Check whether the moving parts function faultlessly and do not jam or whether parts are damaged. All parts must be correctly mounted and all conditions must be fulfilled to ensure fault-free operation of the electric tool. - Damaged protective devices and parts must be properly repaired or replaced by a recognised workshop, insofar as nothing different is specified in the operating manual. Damaged switches must be replaced at a customer service workshop. Do not use any faulty or damaged connection cables. Do not use any electric tool on which the switch cannot be switched on and off.
15. Have your electric tool repaired by a qualified electrician This electric tool conforms to the applicable safety regulations. Repairs may only be performed by an electrician using original spare parts. Otherwise accidents can occur.
16. Important! For your own safety you must only use the accessories and additional units listed in the operating instructions or recommended or specified by the manufacturer. The use of mounted tools or accessories other than those recommended in the operating instructions or catalog may place your personal safety at risk.
17. Noise
Wear ear muffs when you use the compressor.
18. Replacing the power cable
To prevent hazards, leave the replacement of damaged power cables strictly to the manufacturer or a qualified electrician. There is a risk of electric shock!
19. Inflating tires ATTENTION! The manometer has not been officially calibrated! Directly after inflating tires, check the pressure with a suitable pressure gauge, for example at your filling station.
20. Roadworthy compressors for building site operations Make sure that all lines and fittings are suitable for the maximum permissible operating pressure of the compressor.
21. Place of installation
Set up the compressor on an even surface.
22. Attention!
This device can be used by children from 8 years of age as well as by persons with reduced physical, sensory or mental capabilities or with a lack of experience or knowledge, if they are supervised or if they have been trained in the safe use of the device and understand the resultant hazards.
 - Children may not play with the device.
 - Cleaning and maintenance may not be carried out by children.
23. Supply hoses at pressures above 7 bar should be equipped with a safety cable (e.g. a wire rope).
24. Avoid over-stressing the piping system by using flexible hose connections to prevent kinking.

Warning! This electric tool generates an electromagnetic field during operation. This field can impair active or passive medical implants under certain conditions. In order to prevent the risk of serious or deadly injuries, we recommend that persons with medical implants consult with their physician and the manufacturer of the medical implant prior to operating the electric tool.

ADDITIONAL SAFETY INSTRUCTIONS

Safety instructions for working with compressed air and blasting guns

- The compressor pump and lines can become very hot during operation. Touching these parts will burn you.
- The air which is sucked in by the compressor must be kept free of impurities that could cause fires or explosions in the compressor pump.
- When releasing the hose coupling, hold the hose coupling piece with your hand. This way, you can protect yourself against injury from the rebounding hose.
- Wear safety goggles when working with the blow-out pistol. Foreign bodies or blown off parts can easily cause injuries.
- Do not blow at people with the blow-out pistol and do not clean clothes while being worn. Risk of injury!

Safety information for paint spraying

- Do not process any paints or solvents with a flash point below 55° C. There is a risk of explosion!
- Do not heat up paints or solvents. There is a risk of explosion!
- If hazardous liquids are processed, wear protective filter units (face guards). Also, adhere to the safety information provided by the manufacturers of such liquids.
- The details and designations of the Ordinance on Hazardous Substances, which are displayed on the outer packaging of the processed material, must be observed.
- Additional protective measures are to be undertaken if necessary, particularly the wearing of suitable clothing and masks.
- Do not smoke during the spraying process and/or in the work area. There is a risk of explosion! Paint vapours are easily combustible.
- Never set up or operate the equipment in the vicinity of a fire place, open lights or sparking machines.
- Do not store or eat food and drink in the work area. Paint vapors are harmful to your health.
- The work area must exceed 30 m³ and sufficient ventilation must be ensured during spraying and drying. Do not spray against the wind. Always adhere to the regulations of the local police authority when spraying combustible or hazardous materials.
- Do not process media such as white spirit, butyl alcohol and methylene chloride with the PVC pressure hose. These media will destroy the pressure hose.

Technical data

Mains connection	220 - 240 V~ 50 Hz
Motor rating W	max. 1100
Operating mode	S3 15%
Compressor speed min⁻¹	3750 min ⁻¹
Operating pressure	approx. 8 bar
Theoretical intake capacity (l/min)	approx. 180
Sound power level L_{WA}	97 dB(A)
Uncertainty K_{WA}	1.93 dB
Protection type	IP20
Protection class	I
Weight of the unit in kg	5

The noise emission values were measured in accordance with EN ISO 3744.

Wear hearing protection. The effects of noise can cause a loss of hearing.

Residual risks

Comply with the stipulated maintenance and safety instructions in the operating instructions. Remain attentive at all times when working and keep third parties at a safe distance from your work area.

Even when the device is being used properly, there will always be certain residual hazards that cannot be completely ruled out. The following potential hazards can arise due to the type and design of the device:

- Unintentional starting up of the product.
- Damage to hearing if the stipulated hearing protection is not worn.
- Dirt particles, dust etc. can get into the eyes or face despite wearing safety goggles.
- Inhaling swirled up particles.

Before starting the equipment

Before you connect the equipment to the mains supply make sure that the data on the rating plate are identical to the mains data.

- Check the equipment for damage which may have occurred in transit. Report any damage immediately to the transport company which was used to deliver the compressor.
- Install the compressor near the point of consumption.
- Avoid long air lines and supply lines (extension cables).
- Make sure that the intake air is dry and dust free.
- Do not install the compressor in a damp or wet room.
- The compressor may only be used in suitable rooms (with good ventilation and an ambient temperature from +5 °C to 40 °C). There must be no dust, acids, vapours, explosive gases or inflammable gases in the room.

- The compressor is designed to be used in dry rooms. It is prohibited to use the compressor in areas where work is conducted with sprayed water.

Attachment and operation

Important!

You must fully assemble the appliance before using it for the first time!


Mains connection

- The compressor can be connected to any 220 – 240-240 V~ 50 Hz shock-proof socket which is protected by a 16 A fuse.
- Before you use the machine, make sure that the mains voltage is the same as the operating voltage (see the rating plate).
- Long supply cables, extensions, cable reels etc. cause a drop in voltage and can impede motor start-up.
- At low temperatures below +5°C, sluggishness may make starting difficult or impossible.

ON/OFF switch (fig. 1)

- To switch on the compressor, press the button (2) on position I.
- To switch off the compressor, press the button (2) on position 0.

Establishing connections (fig. 2-4)

 **Attention!** Switch the device off for this. When doing so, hold the coupling firmly in order to avoid injuries due to the hose springing back.

- First connect the air hose (5) with the quick coupling of your compressor.
- Connect the fitting of your compressed air tool to the compressed air hose (5) of the compressor.
- To disconnect this coupling again, pull the quick-coupling (4) back at the compressed air hose (5).

Using the tyre inflation device (fig. 6, 7, 8)

The compressed air tyre inflation device (G) is used to inflate car tyres. With the corresponding accessories it can also be used to inflate and regulate bicycle tyres, inflatable dinghies, air mattresses, balls etc. Pressure can be released by actuating the vent valve (7). **Attention!** The manometer has not been officially calibrated! After inflating, please check the air pressure with a calibrated device.

Using an air blow gun

You can also use the tyre inflation device (G) as an air blow gun to clean out cavities and to clean soiled surfaces and work equipment.

To do so, please first remove the hose with the valve adapter (8). Now screw the blow-out adapter (D) to the tyre inflation device (G).

Using the adapter set

The adapter set enables you to use the following additional capabilities of the tyre inflation device:

- Pumping up balls with the help of the ball needle (F). The valve adapter (E) enables bicycle tyres to be inflated.

- Filling pools, air mattresses or boats with the help of the additional adapter (K).
- Filling items with threaded valves (e.g. Boats) with the screw-in valve adapter (J).
- Deflating large volume items. The deflating adapter (C) can be used for this.
- The two conical universal adapters (A/B) can likewise be used for inflating air mattresses.

Electrical connection

The electrical motor installed is connected and ready for operation. The connection complies with the applicable VDE and DIN provisions. The customer's mains connection as well as the extension cable used must also comply with these regulations.

Damaged electrical connection cable

The insulation on electrical connection cables is often damaged. This may have the following causes:

- Passage points, where connection cables are passed through windows or doors.
- Kinks where the connection cable has been improperly fastened or routed.
- Places where the connection cables have been cut due to being driven over.
- Insulation damage due to being ripped out of the wall outlet.
- Cracks due to the insulation ageing.

Such damaged electrical connection cables must not be used and are life-threatening due to the insulation damage. Check the electrical connection cables for damage regularly. Make sure that the connection cable does not hang on the power network during the inspection. Electrical connection cables must comply with the applicable VDE and DIN provisions. Only use connection cables with the marking „H05VV-F”.

The printing of the type designation on the connection cable is mandatory.

AC motor

The mains voltage must be 220 – 240 V~ Extension cables up to 25 m long must have a cross-section of 1.5 mm². Connections and repairs of electrical equipment may only be carried out by an electrician. Please provide the following information in the event of any enquiries:

- Type of current for the motor
- Machine data – type plate
- Machine data – type plate

Cleaning, maintenance, and storage

Important!

Pull out the power plug before doing any cleaning and maintenance work on the equipment. Risk of injury from electric shock!

Important!

Wait until the equipment has cooled down completely! Risk of burns!

Important!

Always depressurize the equipment before carrying out any cleaning and maintenance work! Risk of injury!

Cleaning

- Keep the equipment free of dirt and dust as far as possible. Wipe the equipment with a clean cloth or blow it down with compressed air at low pressure.
- We recommend that you clean the equipment immediately after you use it.
- Clean the equipment regularly with a damp cloth and some soft soap. Do not use cleaning agents or solvents; these may be aggressive to the plastic parts in the equipment. Ensure that no water can get into the interior of the equipment.
- You must disconnect the hose and any spraying tools from the compressor before cleaning. Do not clean the compressor with water, solvents or the like.

Service information

Please note that the following parts of this product are subject to normal or natural wear and that the following parts are therefore also required for use as consumables. Wear parts*: belt, coupling * Not necessarily included in the scope of delivery!

Storage

Important!

Pull out the mains plug and ventilate the equipment and all connected pneumatic tools. Switch off the compressor and make sure that it is secured in such a way that it cannot be started up again by any unauthorized person.

Important!

Store the compressor only in a dry location which is not accessible to unauthorized persons. Always store upright, never tilted! Storage power cord, hose and accessories (Fig. 2)

- The power cord can be stored sideways of the compressor.
- The air hose can be stored in the tool compartment.

Transport

- The unit can be transported with the handle (1) (fig. 5).

Disposal and recycling

The equipment is supplied in packaging to prevent it from being damaged in transit. The raw materials in this packaging can be reused or recycled. The equipment and its accessories are made of various types of material, such as metal and plastic. Defective components must be disposed of as special waste. Ask your dealer or your local council.



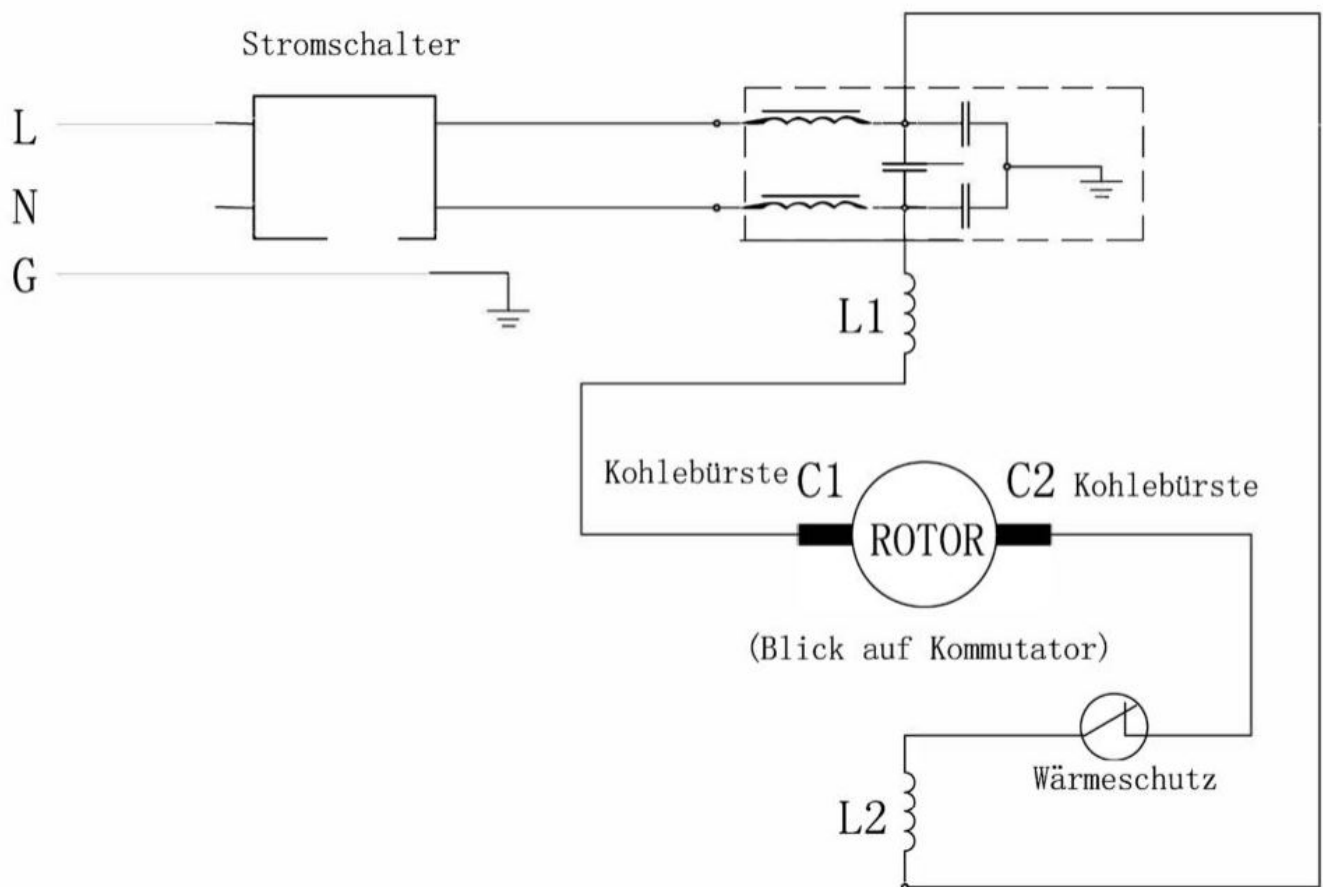
Old devices must not be disposed of with household waste!

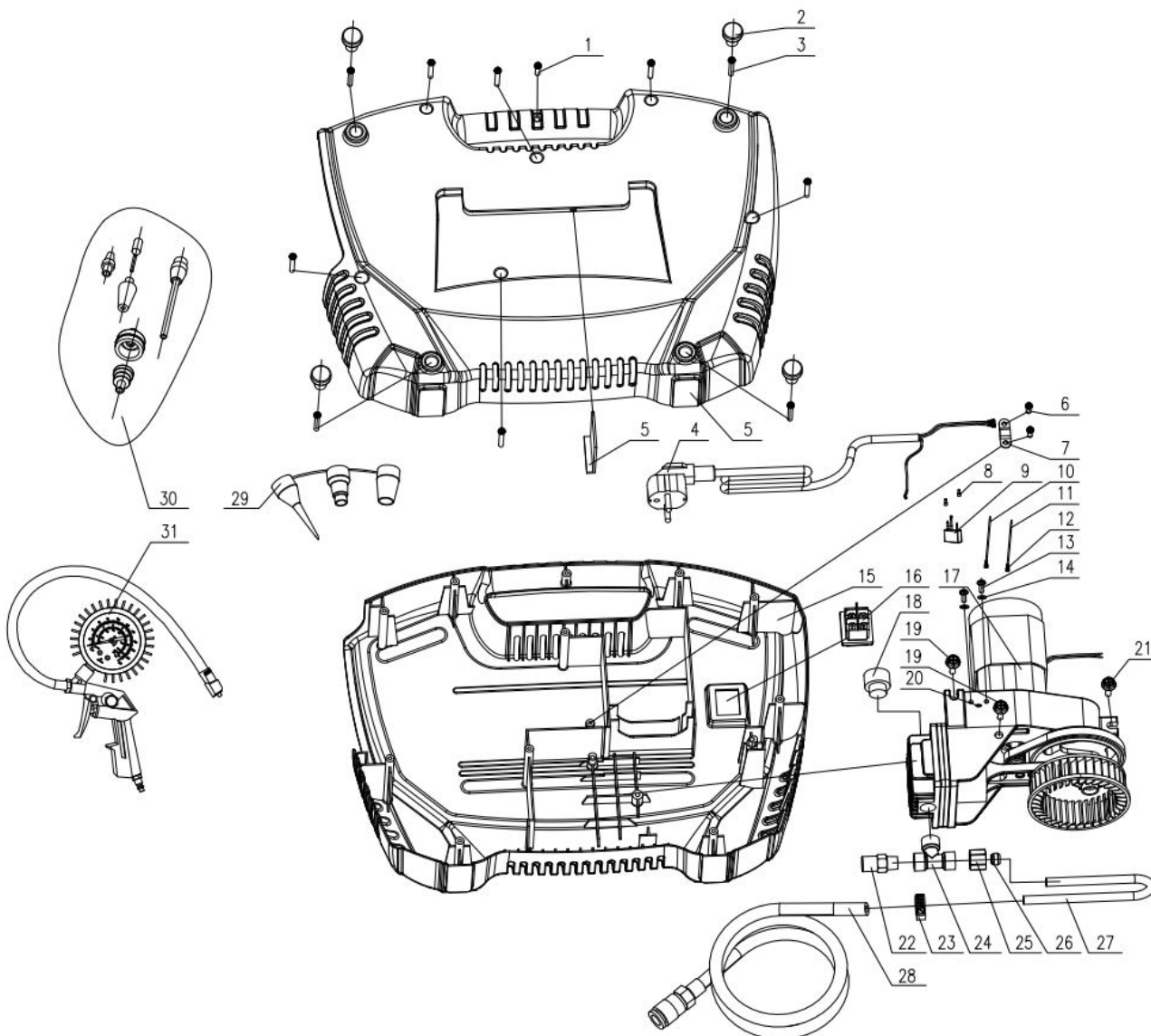
This symbol indicates that this product must not be disposed of together with domestic waste in compliance with the Directive (2012/19/EU) pertaining to waste electrical and electronic equipment (WEEE). This product must be disposed of at a designated collection point. This can occur, for example, by handing it in at an authorised collecting point for the recycling of waste electrical and electronic equipment. Improper handling of waste equipment may have negative consequences for the environment and human health due to potentially hazardous substances that are often contained in electrical and electronic equipment. By properly disposing of this product, you are also contributing to the effective use of natural resources. You can

obtain information on collection points for waste equipment from your municipal administration, public waste disposal authority, an authorised body for the disposal of waste electrical and electronic equipment or your waste disposal company.

Troubleshooting

Fault	Possible cause	Remedy
The compressor does not start.	<ul style="list-style-type: none"> • No supply voltage. • Insufficient supply voltage. • Outside temperature is too low. • Motor is overheated. 	<ul style="list-style-type: none"> • No supply voltage. • Insufficient supply voltage. • Outside temperature is too low. • Motor is overheated.
The compressor starts but there is no pressure.	<ul style="list-style-type: none"> • The non-return valve leaks. • The seals are damaged. 	<ul style="list-style-type: none"> • The non-return valve leaks. • The seals are damaged.
The compressor starts, pressure is shown on the pressure gauge, but the tools do not start.	<ul style="list-style-type: none"> • The hose connections have a leak. • A quick-lock coupling has a leak. 	<ul style="list-style-type: none"> • The hose connections have a leak. • A quick-lock coupling has a leak.





CE – Declaration of Conformity

hereby declares the following conformity under the EU Directive and standards for the following article

Marke / Brand:
Art.-Bezeichnung / Article name:

SCHEPPACH
KOMPRESSOR - Air Force 3
COMPRESSOR - Air Force 3
COMPRESSEUR - Air Force 3
5906127901

Art.-Nr. / Art. no.:

<input type="checkbox"/> 2014/29/EU	<input type="checkbox"/> 2004/22/EC	<input type="checkbox"/> 89/686/EC_96/58/EC	<input checked="" type="checkbox"/> 2000/14/EC_2005/88/EC
<input checked="" type="checkbox"/> 2014/35/EU	<input checked="" type="checkbox"/> 2014/68/EU	<input type="checkbox"/> 90/396/EC	Annex V
<input checked="" type="checkbox"/> 2014/30/EU	<input checked="" type="checkbox"/> 2011/65/EU*	<input type="checkbox"/>	Annex VI Noise: measured $L_{WA} = 95,4$ dB(A); guaranteed $L_{WA} = 97$ dB(A) $P = 1.1$ KW; $L/\varnothing =$ cm Notified Body: TÜV SÜD industrie Service GmbH Notified Body No.: 0036
<input checked="" type="checkbox"/> 2006/42/EC	Annex IV Notified Body: Notified Body No.: Certificate No.:		2010/26/EC Emission. No:

Standard references:

Standard references: EN 1012-1; 60335-1; EN 55014-1; EN 55014-2; 61000-3-2; EN 61000-3-3; EN ISO 3744;

This declaration of conformity is issued under the sole responsibility of the manufacturer.

The object of the declaration described above fulfils the regulations of the directive 2011/65/EU of the European Parliament and Council from 8th June 2011, on the restriction of the use of certain hazardous substances in electrical and electronic equipment.

Ichenhausen, den 29.05.2018


Unterschrift / Markus Bindhammer / Technical Director

First CE:

Subject to change without notice


Documents registrar: Daniel Fink Günzburger Str. 69, D-89335 Ichenhausen

Warranty

Apparent defects must be notified within 8 days from the receipt of the goods. Otherwise, the buyer's rights of claim due to such defects are invalidated. We guarantee for our machines in case of proper treatment for the time of the statutory warranty period from delivery in such a way that we replace any machine part free of charge which provably becomes unusable due to faulty material or defects of fabrication within such period of time. With respect to parts not manufactured by us we only warrant insofar as we are entitled to warranty claims against the upstream suppliers. The costs for the installation of the new parts shall be borne by the buyer. The cancellation of sale or the reduction of purchase price as well as any other claims for damages shall be excluded.

scheppach Fabrikation von Holzbearbeitungsmaschinen GmbH | Günzburger Str. 69 |
D-89335 Ichenhausen | www.scheppach.com

Documents / Resources

	scheppach Air Force 3 Portable Compressor [pdf] Instruction Manual Air Force 3, Portable Compressor, Air Force 3 Portable Compressor, Compressor
---	---

References

- [scheppach | scheppach](#)