



Schelinger RS-WIFI2 Astronomical WiFi Time Switch User Manual

[Home](#) » [Schelinger](#) » Schelinger RS-WIFI2 Astronomical WiFi Time Switch User Manual 

Contents

- [1 Schelinger RS-WIFI2 Astronomical WiFi Time Switch](#)
- [2 Parts Description](#)
- [3 TECHNICAL DATA](#)
- [4 DIMENSIONS](#)
- [5 INSTALLATION AND CONFIGURATION](#)
- [6 APPLICATION FEATURES](#)
- [7 SECURITY](#)
- [8 MAINTENANCE](#)
- [9 RECOMMENDATIONS](#)
- [10 Documents / Resources](#)
- [11 Related Posts](#)

Schelinger

Schelinger RS-WIFI2 Astronomical WiFi Time Switch



Smart, astronomical, single-channel WIFI PROGRAMMER – RS-WIFI2 enables remote controlling of connected devices from all over the world by using app (available on Android and iOS) on your smartphone or tablet.

The main condition is stable connection of a programmer to a wifi network with Internet access. Programmer has a lot of useful functions listed below, thanks to which it's useful in controlling: lighting on building facades, parking lots, staircases and many other electrical devices.

The programmer has a useful astronomical function that allows to control devices depending on sunrises and sunsets – it takes into account actual time and geographical coordinates of the place where it's installed.

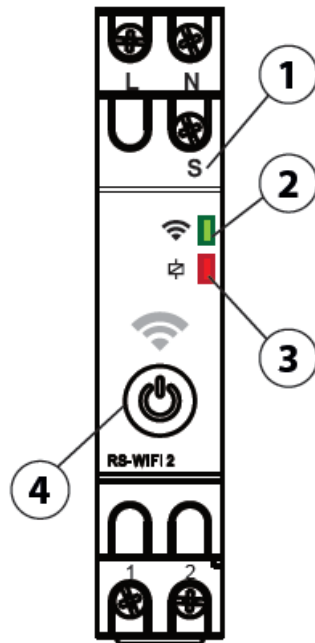
Parts Description

1. **„S” TERMINAL** – controlling the operation of the receiver with an external button.
2. **THE GREEN STATUS LED of WiFi network:**
 - flashing fast: waiting to connection
 - ON: connected to the WiFi network
 - OFF: problems with the WiFi network.
3. **RED RELAY STATUS LED:**
 - LED ON: Relay ON
 - LED OFF: Relay OFF



*the ability to change
the settings*

4. **BUTTON TO MANUALLY CONTROL THE DEVICE:**
 - Quick press: command to switch the relay status
 - >5s – search for a WiFi network to connect (first switch-on)
 - >5s – RESET command

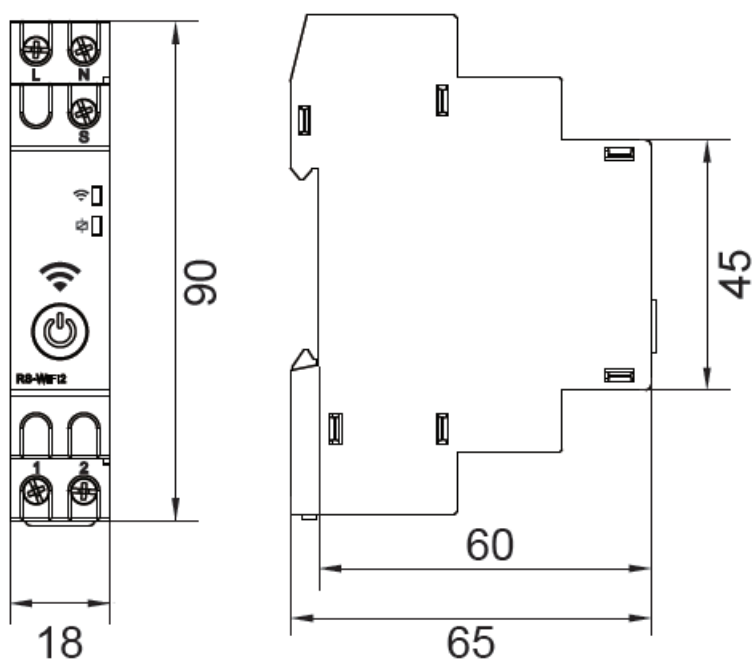


TECHNICAL DATA

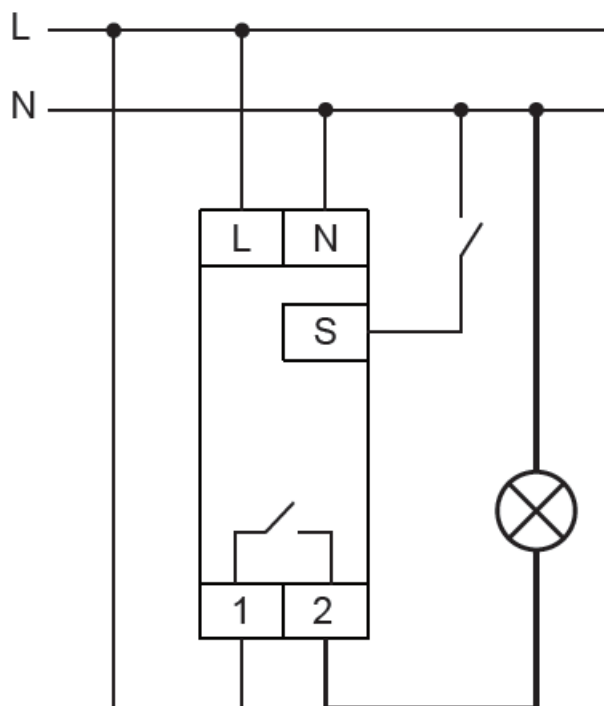
- **Rated voltage**
48-240V 50/60Hz
- **Power consumption**
P on: 1.5W
- **Resistive load**
Max 16A
- **Standby power**
Psb: <0.5W
- **Isulation voltage**
Ui: 450V
- **Surge current**
Uimp: 4kV
- **Overvoltage category**
III
- **WIFI frequency**
WIFI 2.4GHz b/g/n
Bluetooth 4.2
- **Safety system**
WEP, WPA/WPA2
- **Supply terminals:**
L – N (Max 2.5mm²)
- **Output terminals**
1 – 2 (Max 2.5mm²)
- **Relay contact**
1NO (AC1 16A/250V)
- **Operating temperature**
-20°C ÷ 60°C

- **Appliance classes**
(klasa II)
- **International Protection Rating**
IP20
- **Mounting**
szyna TH-35 (DIN 35)
- **Tightening torque**
0,5Nm

DIMENSIONS



WIRING DIAGRAM



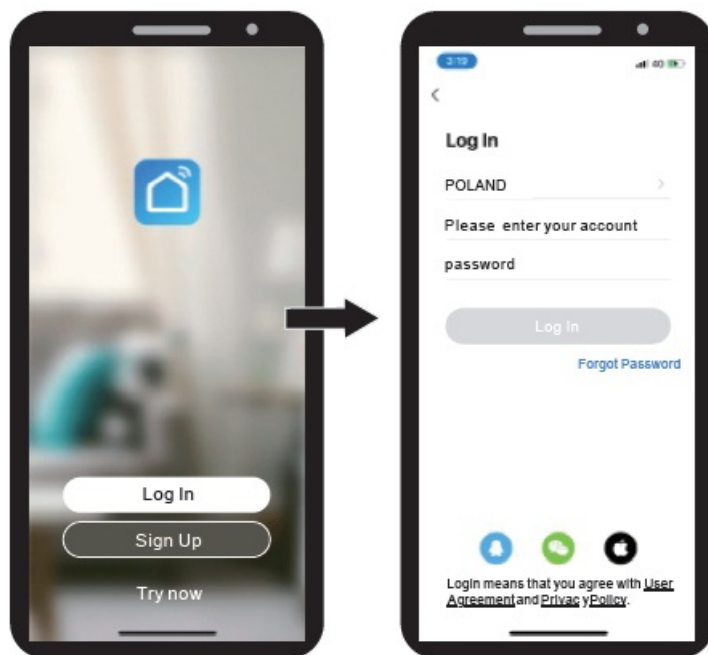
INSTALLATION AND CONFIGURATION

Scan the QR Code and download „Smart Life” app.



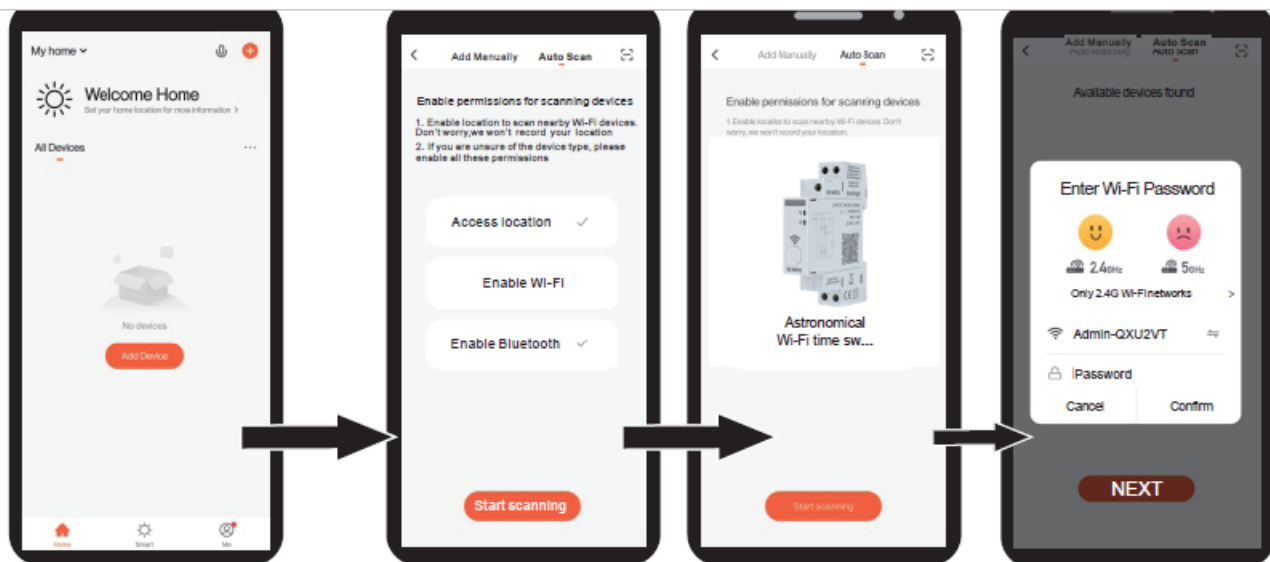
Connect the device to AC/DC48V-240V as per the wiring diagram (page 1)

Register/Login Account



After first launching the application will request permissions for your location. If you do not consent, your device WILL NOT BE FOUND.

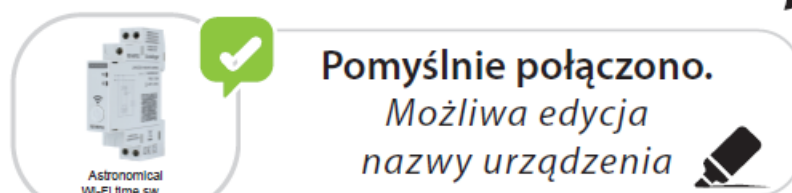
Press for about 5s. and hold  until  light blinks fast.



Kliknij ⊕ lub
dodaj urządzenie”

Wybierz „Auto Scan”
gdy WiFi i Bluetooth
są dostępne.

Wprowadź hasło
WiFi i potwierdź



Click to turn ON or turn OFF the device



APPLICATION FEATURES



Countdown



Schedule



Circulate



Random



Inching



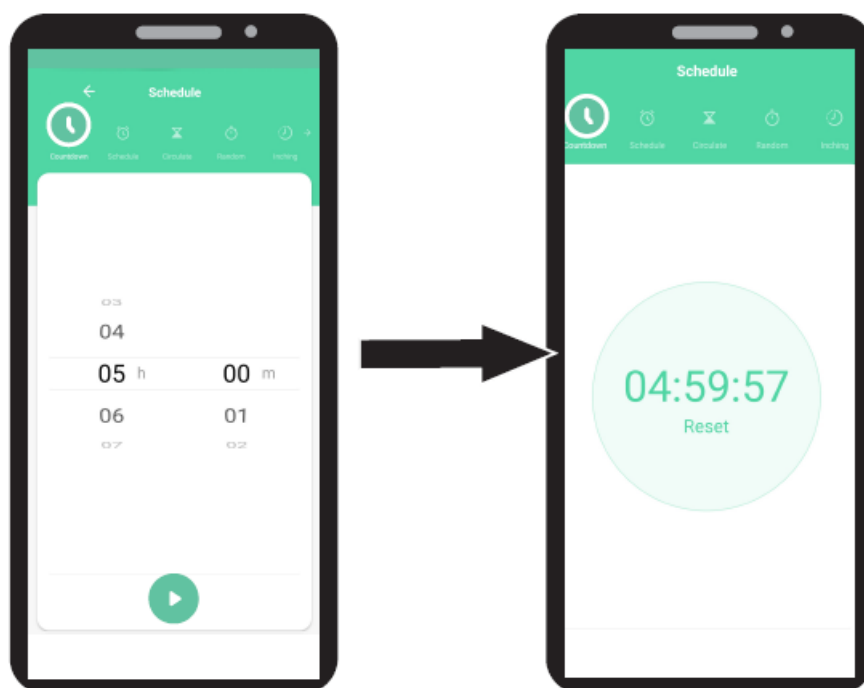
Astronomical

Device configuration automatically synchronized in the cloud. After pairing the RS-WiFi programmer with another device (smartphone, tablet, etc.) all entered schedules remain unchanged

When two functions overlap in time, the application warns the user about this and asks to accept the change.

FUNKCJA „COUNTDOWN”

The “Countdown” function allows user to apply a countdown to the operation time of connected device. Set the elapse time hour and minute.

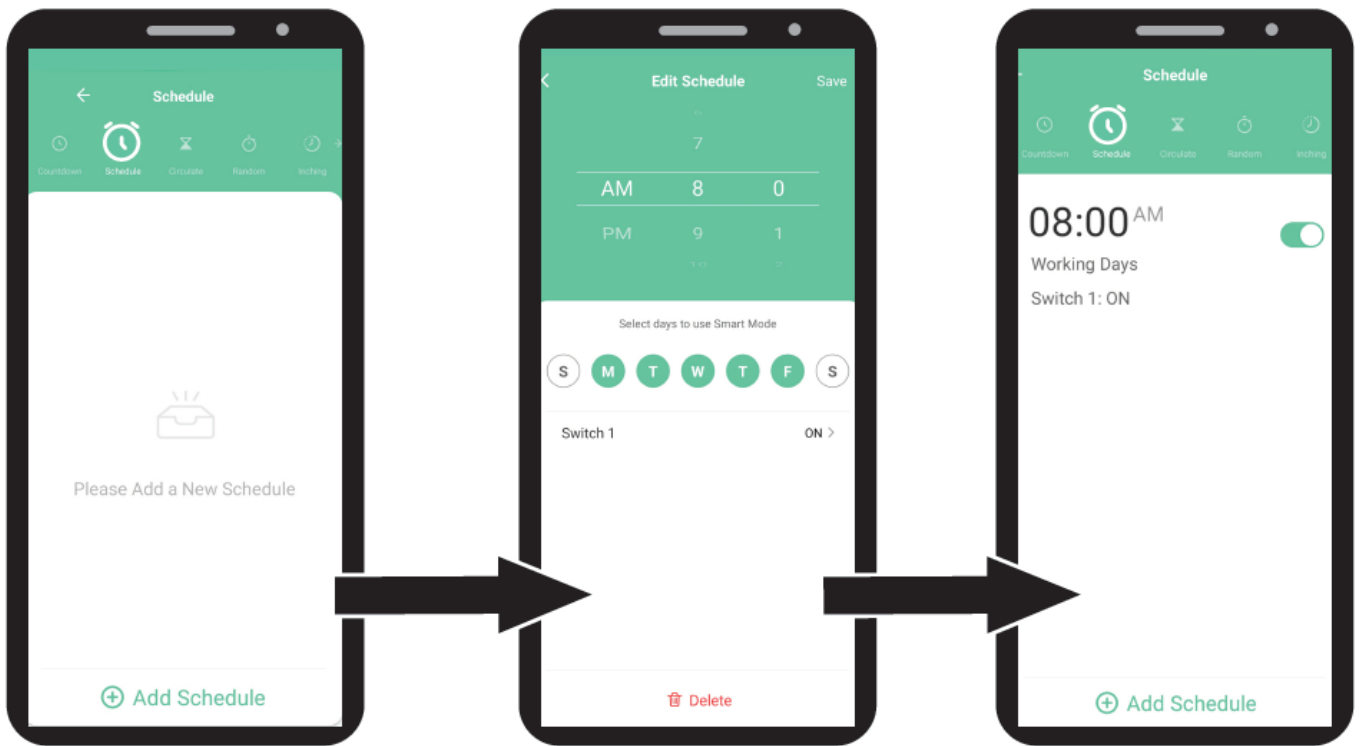


FUNKCJA „SCHEDULE”

Daily / weekly program.

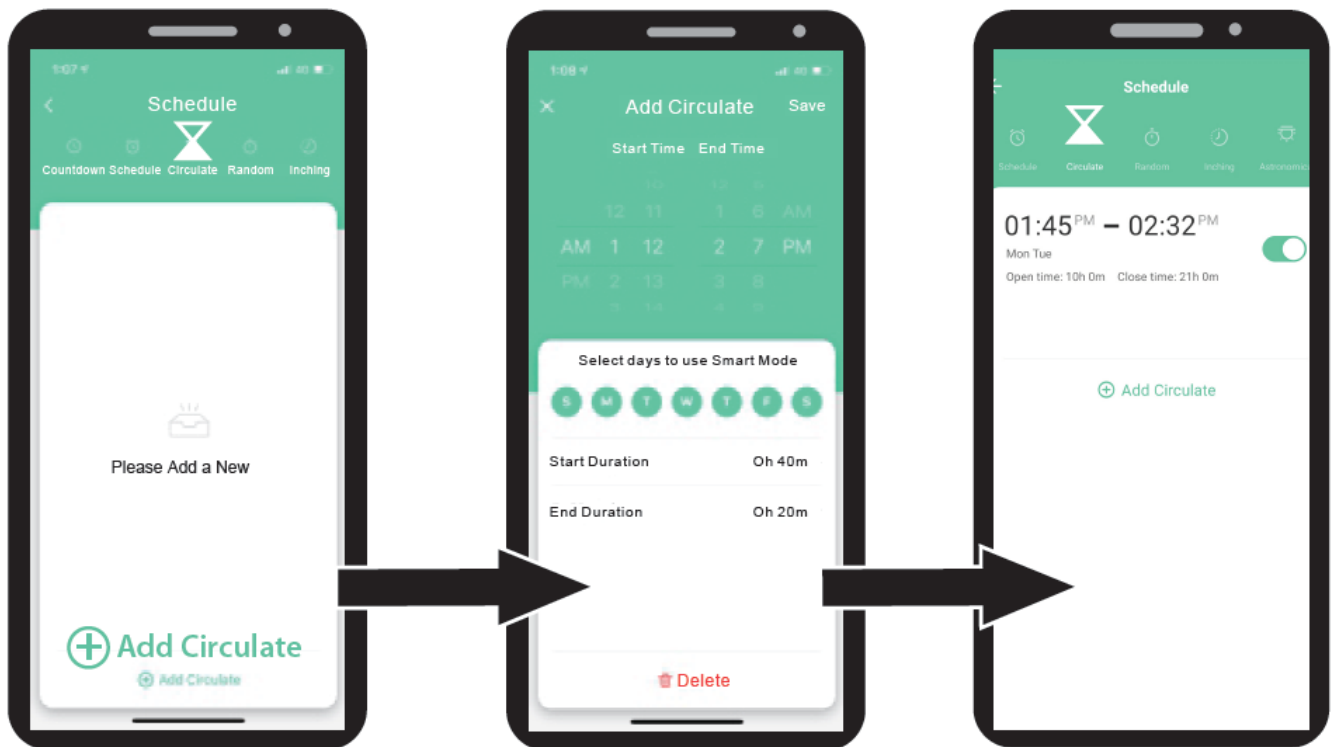
Automatic start or turning off the timer on selected days of the week.

Set time, week, output state (ON / OFF) and click “Save” .



FUNKCJA „CIRCULATE”

Allows user to set interventions with programmed duration in a certain period of time.



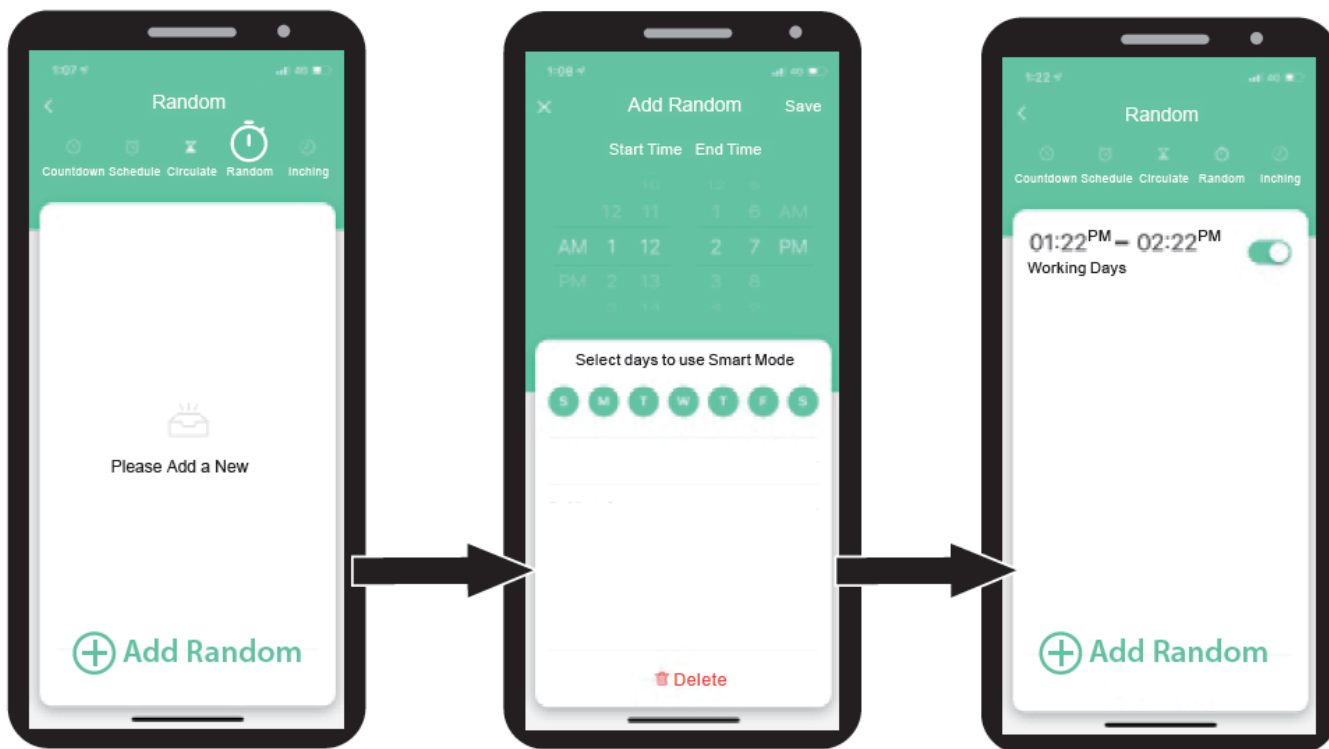
FUNKCJA „RANDOM”

The „Random” function allows user to set a time interval for random switch on and off.

Working time cannot be shorter than 30min.

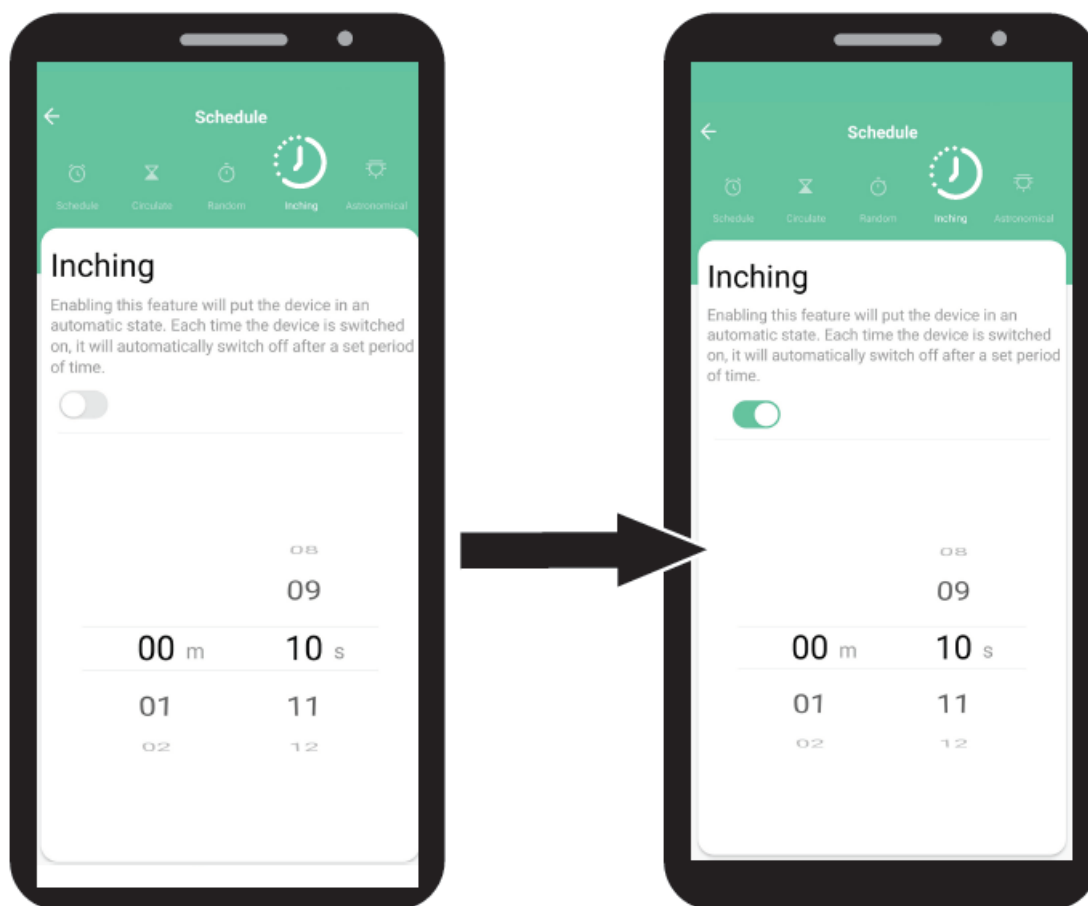
Cycle duration 1h:

- Works within 2-30min after starting,
- and stop until 2-30 min before closing



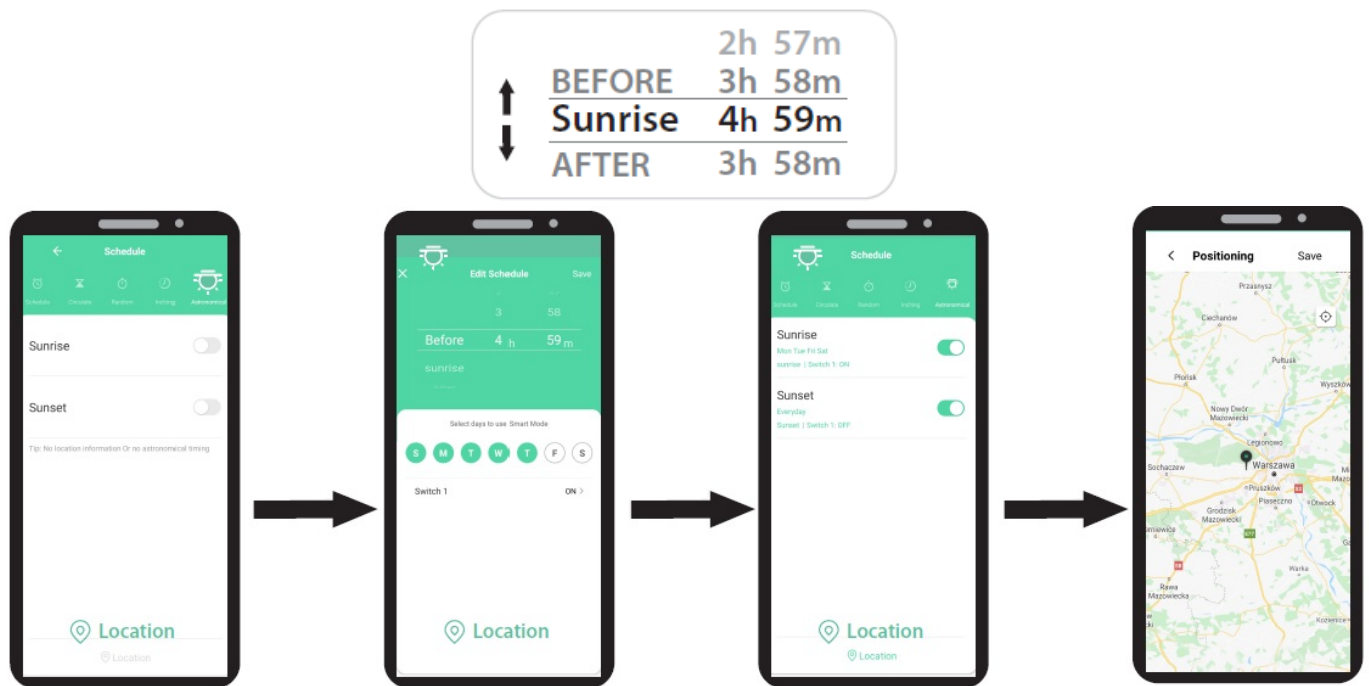
FUNKCJA „INCHING

Enable this feature will put the device in an automatic state. Each time the device is switched on, it will automatically switch off a set of period of time



FUNKCJA „ASTRONOMICAL”

Control depending on the sunrise and sunset times, taking into account the information about the geographic coordinates of the programmer's installation location. It is possible to shift the sunrise or sunset time to 4h 59min.



SECURITY

The RS-WIFI2 programmer is designed for indoor installation. Before mounting, read the instructions and disconnect the power supply. Installation should be performed by a qualified user authorized to mount electrical devices depending on the applicable regulations in a given country, in accordance with the mounting diagram. Modifications to the product may cause threat and loss of warranty. The device should be installed only in rooms with constant WIFI coverage

MAINTENANCE

All maintenance work should be carried out after disconnecting the power supply. Use dry and delicate materials for cleaning. Do not use chemical agents. Product not adapted to work in an environment with unfavorable conditions, i.e. high dustiness / humidity, water, explosive zones, vibrations, chemical fumes.


RECOMMENDATIONS

Failure to follow the instructions in the manual may result in a fire, electric shock, burns or other damage. Bemko Sp. o.o. is not responsible for failure to comply with the above recommendations.

We also reserve the right to make changes to the manual – the current version is available at www.schelinger.eu

Waste electrical products should not be disposed with household waste. Please recycle where facilities exist. Check with Your Local Authority or retailer for recycling advice.

Documents / Resources

	<p>Schelinger RS-WIFI2 Astronomical WiFi Time Switch [pdf] User Manual RS-WIFI2, Astronomical WiFi Time Switch</p>
---	--