



SCHAFER Draft 2go Self-Sufficient Dispensing System User Guide

[Home](#) » [SCHAFER](#) » SCHAFER Draft 2go Self-Sufficient Dispensing System User Guide 

Contents

- [1 SCHAFER Draft 2go Self-Sufficient Dispensing System](#)
- [2 Assembly](#)
- [3 Documents / Resources](#)
 - [3.1 References](#)
- [4 Related Posts](#)

SCHAFER

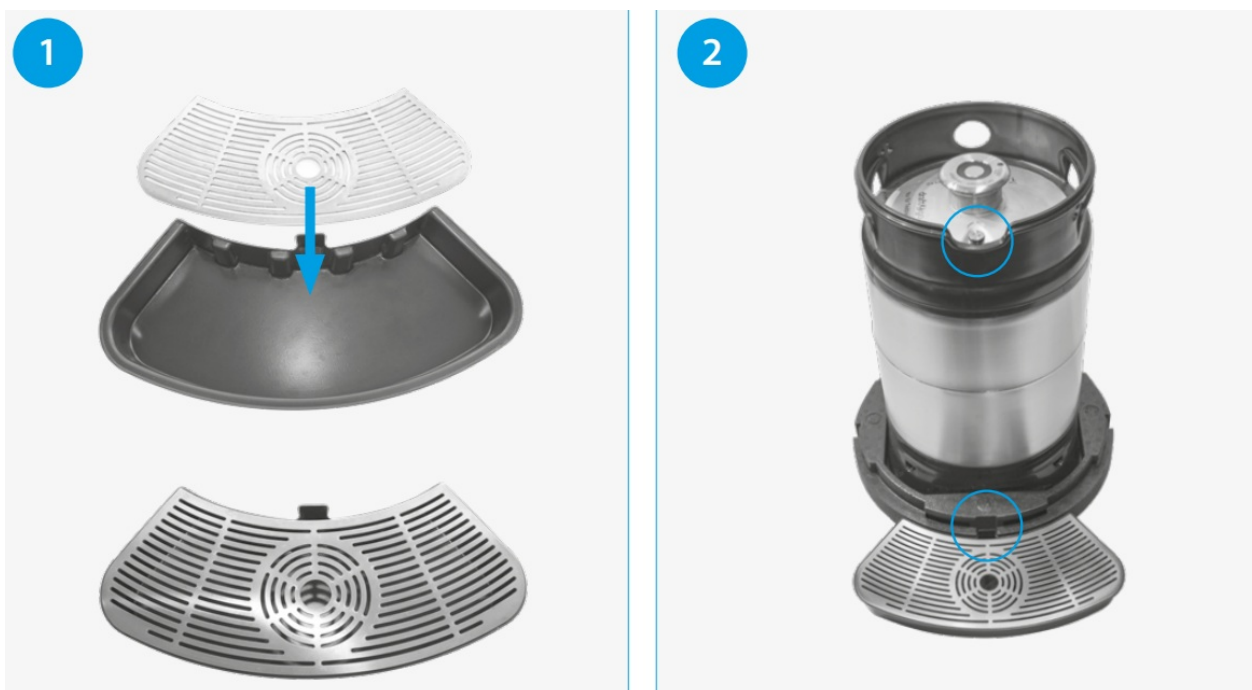
SCHAFER Draft 2go Self-Sufficient Dispensing System



Assembly

1. Assemble the drip tray.
2. Place the pre-chilled KEG onto the insulator base, so that the NC valve and the recess in the top ring are in line with the drip tray.

Now push the drip tray onto the base.



3. Put the two sides of the insulator jacket together, so that the handholds on the jacket and the KEG are in line. The jacket and the base must be flush when closed together.
4. Installing the dispensing head. Important: Press the open dispensing head onto the flat fitting (large valve) and

NC valve (1) and pull forwards until the dispensing head audibly clicks into place (2).

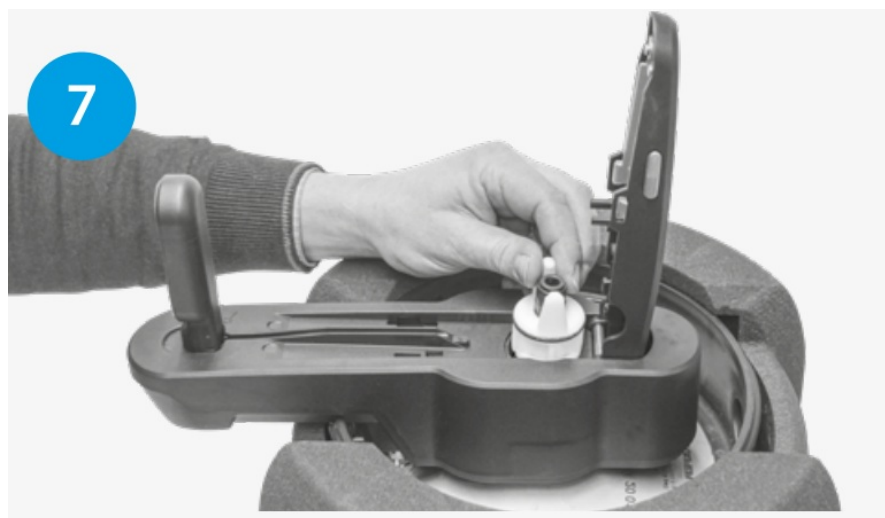


5. Pull out the faucet spout and keep it in a safe place.

6. Important: Always wash and rinse out the faucet spout and the one-way line before use.



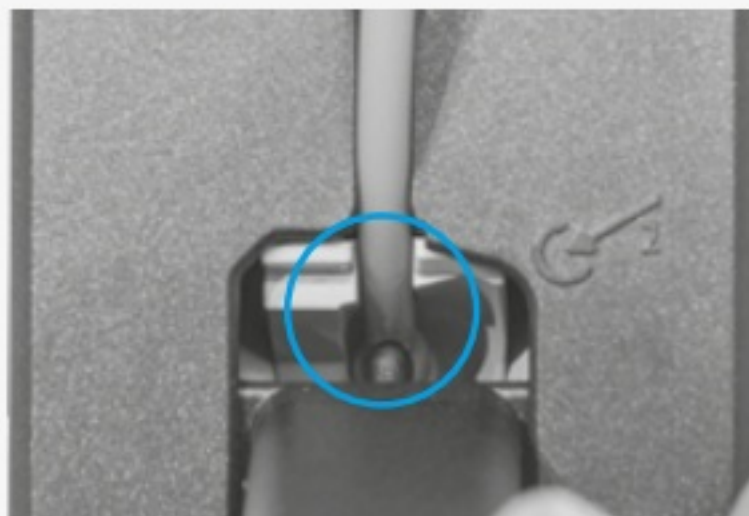
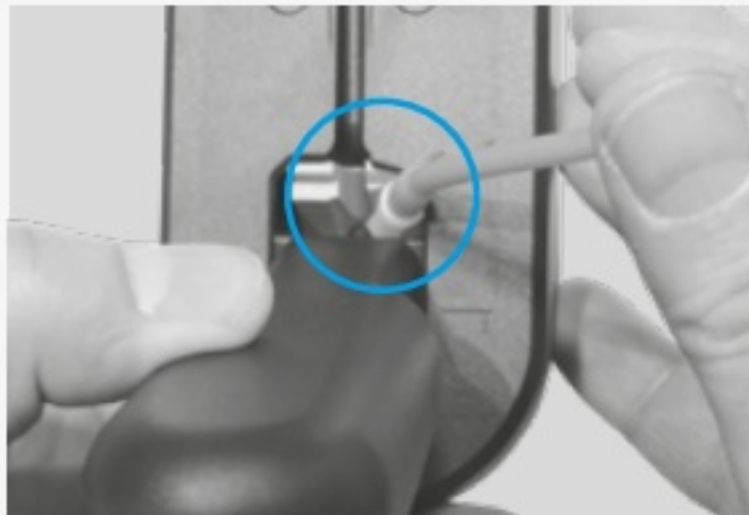
7. Put the spout with the moistened black rubber O-ring into place at the back of the dispensing head.



1. Pull the tap handle forwards.



2. Insert the rinsed out one-way line into the front section to the right of the clamp.
3. The one-way line must be installed in the clamp centrally!
4. Pull the end of the one-way line downwards! Then let go of the tap handle.





8. The one-way line elbow connector must be pushed to the limit into the spout's connector socket.
 1. Important: Press the one-way line lightly into the holding groove. Do not stretch or apply pressure along the entire length of the malleable one way line.
9. Close the dispensing head. The release buttons must click into place. Click! Replace the stainless steel spout. All finished. Cheers!
 1. You can tell if the lever is closed properly from the two release buttons on the right and left side of the lever.
10. For disassembly and cleaning, press the release buttons on the dispensing head. Attention: the dispensing head is under pressure and the lever can shoot upwards. We therefore recommend two-handed operation here. Pull the tap handle forwards and remove the one-way line.



1. Push the dispensing head backwards (1) and lift it off the KEG (2).

Important: only rinse the dispensing head under running water. Do not use any detergent.


Do not clean in a dishwasher!
11. The one-way line should be changed for each new KEG. If the dispensing head is removed during a break (over night, for instance), the one-way line must be rinsed under running water right away.





Important: This quick start guide is no replacement for following the original operating instructions. This quick start guide is only intended to help you become familiar with the system's operating principle more quickly. Do not operate the dispensing unit without first carefully reading all instructions, warnings and safety information. All instructions and information are also available at www.keg.schaefer-container-systems.com/en/media

- SCHÄFER Werke GmbH
- Pfannenbergstraße 1 · D-57290 Neunkirchen
- Tel. +49 (0) 27 35/787-481 · Fax +49 (0) 27 35/787-493 E-Mail: info@schaefer-container-systems.de
- www.schaefer-container-systems.com
- www.youtube.com/schaeferwerkegmbh

Documents / Resources

	<p>SCHAER Draft 2go Self-Sufficient Dispensing System [pdf] User Guide Draft 2go, Self-Sufficient Dispensing System, Draft 2go Self-Sufficient Dispensing System</p>
---	--

References

-  [SCHÄFER Container Systems](#)
-  [YouTube](#)