



SCHAFFER Draft 2 Go Icepack Set Instructions

[Home](#) » [SCHAFFER](#) » SCHAFFER Draft 2 Go Icepack Set Instructions 

Contents

- [1 SCHAFFER Draft 2 Go Icepack Set](#)
- [2 Instructions](#)
- [3 PLEASE NOTE](#)
- [4 Documents / Resources](#)
 - [4.1 References](#)
- [5 Related Posts](#)

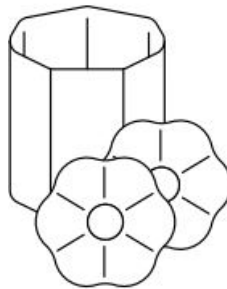


SCHAFFER Draft 2 Go Icepack Set

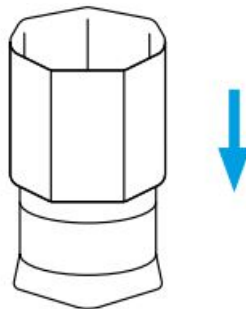


Instructions

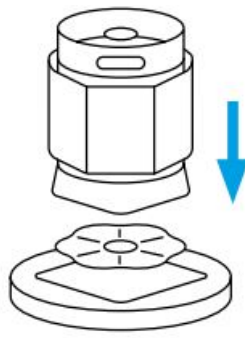
Ice sleeve and ice packs must be cooled in a deep freeze (-18°C) before use for at least 24 hours.



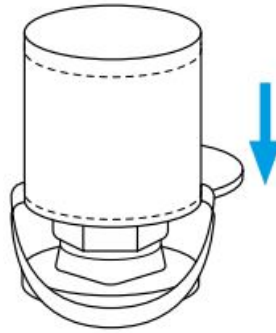
To cool the KEG containing the beverage, simply moisten the KEG and place the ice sleeve over it.



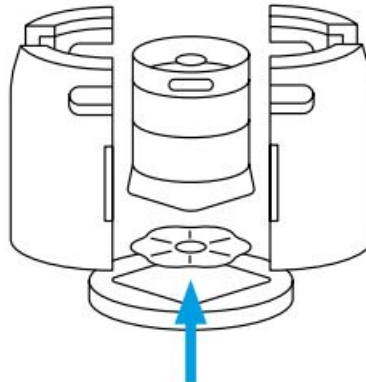
Place the ice pack underneath the KEG on the draft2go insulator base.



To reduce cooling time further, simply place the cooler bag over the KEG and the ice sleeve.



In a few hours, the beverage will now be cooled down to drinking temperature. (See temperature table). At a room temperature of 22° C, the ice sleeve plus ice packs will cool the beverage down to 2-4° C in 2-3 hours.



Enclose the chilled KEG in the draft2go insulator jacket to keep the beverage cold for long periods. Recommendation: place the KEG in the insulator jacket on top of the second pre-cooled ice pack

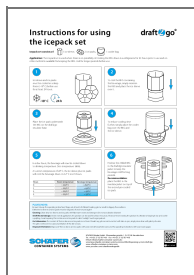
Hours	Room temperature	Beverage temperature
0	~ 22,0° C	~ 20,0° C
1	~ 22,0° C	~ 6,0° C
2	~ 22,0° C	~ 4,0° C
3	~ 22,0° C	~ 2,5° C

PLEASE NOTE

Be sure to keep the operating instructions! Keep out of reach of children! Leaking gel can result in slippery floor surfaces. Defective ice sleeves and ice packs must be disposed of and not used again! Cleaning: Clean dirty ice sleeves and ice packs with lukewarm water and detergent. Do not use abrasive cleaners! Shelf life and storage: Under normal application, the product can be used for at least two years. We recommend storing the product in a freezer or keeping it dry and cool in a polybag. Avoid exposing the ice sleeves and ice packs to direct sunlight over longer periods. Gel information: The content of the ice sleeves and ice packs is not toxic. Should any gel come into contact with skin or eyes, simply rinse clean with plenty of water. The gel is not known to cause any irritation of the skin or eyes. Disposal information: Dispose of the ice sleeve and ice packs with your normal

household waste and the operating instructions with your waste paper

Documents / Resources



[SCHAFFER Draft 2 Go Icepack Set](#) [pdf] Instructions
Draft 2 Go, Icepack Set, Draft 2 Go Icepack Set, D-57290

References

- [SCHÄFER Container Systems](#)
- [YouTube](#)

Manuals+.