



ScentShare SA01 Scent Diffuser User Manual

[Home](#) » [ScentShare](#) » ScentShare SA01 Scent Diffuser User Manual 

ScentShare SA01 Scent Diffuser User Manual

INSTRUCTION 

SA01
Scent Diffuser
User Manual

Contents

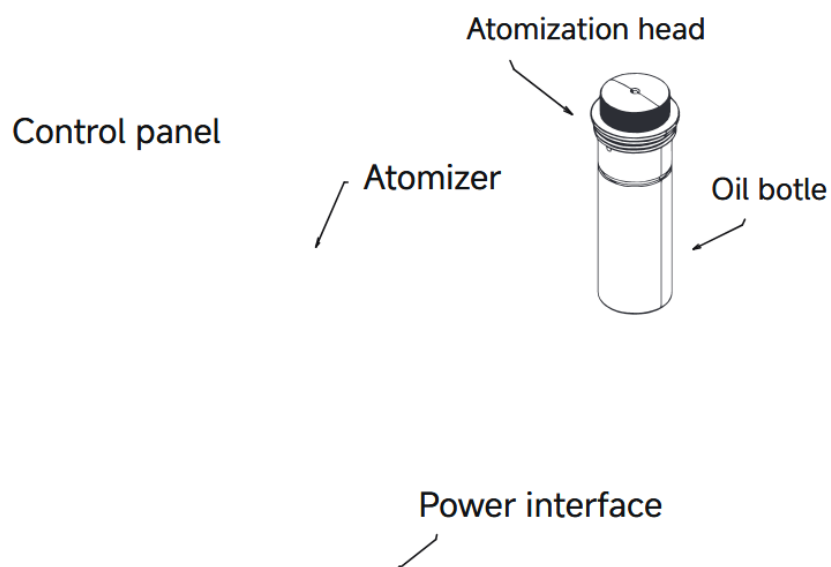
- 1 Instruction
- 2 Attentions
- 3 Instruction of indicator light
- 4 Installation
- 5 Parameters
- 6 Accessory
- 7 Touch-control mode setting
- 8 Bluetooth-control mode setting
- 9 Switch to touch-control mode from Bluetooth-control mode
- 10 Function of Bluetooth APP
- 11 Malfunction Debugging
- 12 Maintenance
- 13 After-sales Service
- 14 Warranty Card
- 15 Documents / Resources
 - 15.1 References

Instruction

It comes with touch-screen and bluetooth-APP control, adopts two-fluid micro-nano atomization technology.

All-metal, exquisite appearance can match various styles perfectly.

Suitable for KTV, sales office, 4S store, VIP room, home furnishing, hotel, airport, health center and other places.



Product mix

Attentions

Please read this manual in detail before using the device and keep it carefully.

1. Please use the power sockets supplied by our company to ensure the normal operation of the device and avoid damage to the device.
2. Please do not use overloaded power sockets, broken wire and charger. It may endanger your safety and cause a fire, please replace in time if it happens.
3. Please do not try to modify, disassemble or repair the device in order to avoid damage to the device, if you are not a technician. If the device is abnormal, please check whether it is operated normally according to the user manual, or check according to the Malfunction Debugging. If it cannot be solved, please contact seller timely.
4. When installing and using the equipment, make sure that the vertical direction of the equipment is perpendicular to the horizontal direction.
5. Please do not invert or tilt the device when used. If the device needs to be transported to other sites, please maintain and clean the device (see Maintenance for details) first before package and transportation, in case of oil leakage to damage the device.

Instruction of indicator light

High: work for 120s, pause for 60s

Medium: work for 60s, pause for 180s

Low: work for 60s, pause for 300s

SET: set or adjust the mode

Bluetooth indicator:

In blue light, when the device successfully connects to Bluetooth, the indicator lights up blue.

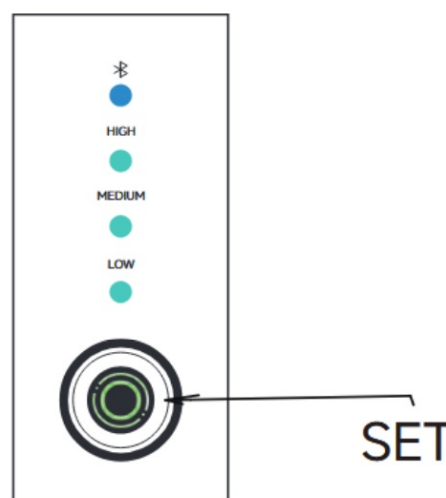
Gear indicator:

In green light, according to the selected gear (Low, Medium, High), the continuous green light indicates the current working mode.

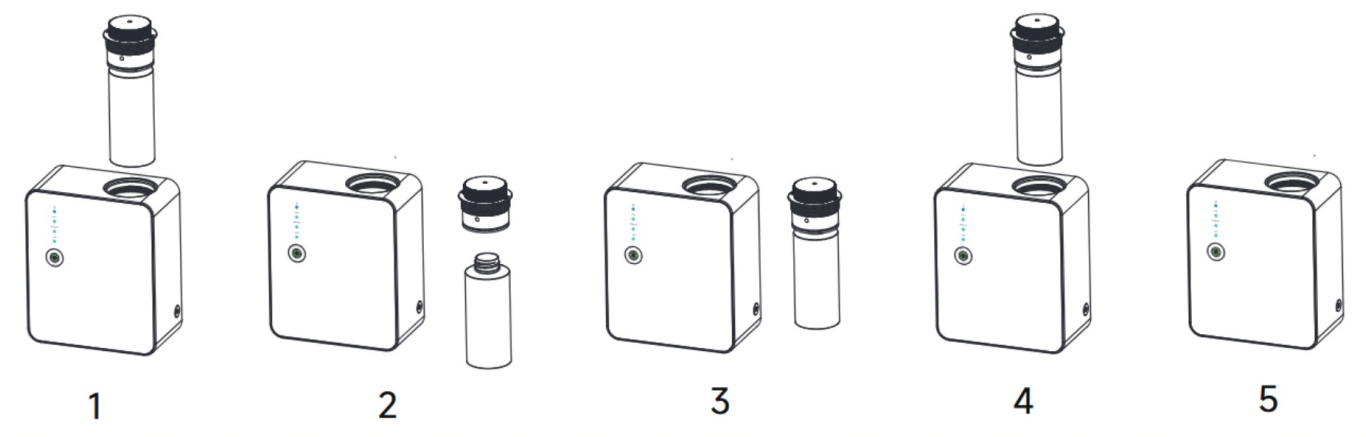
SET button:

In red and green dual-color light, the green color means the device is in one of working period, the red color means the device is not in any working period.

※The device indicator lights up from bottom to top.



Installation



1. Rotate the atomizer counterclockwise, put up the atomizer and oil bottle.
2. Hold the oil bottle and rotate it counterclockwise to separate it from the atomizer, and fill it with essential oil (The upper limit is 150ml.).
3. Tighten the oil bottle clockwise with the atomizer.
4. Put the oil bottle and atomizer into the machine, and tighten it clockwise.
5. Set the program to start working.

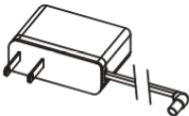



Parameters

Model	SA01
Size	W155*D80*H195 (mm)
Capacity	150ml
N.W	1.85KG
Coverage	300m ³
Voltage	DC12V-1A
Power	4W
Noise	≤32dba
Package	W256*D240*H112 (mm)

Instruction of Essential Oil

1. Before refill canister with essential oil, please turn off the device for 2 minutes till oil of atomizer back to canister then take off the oil canister.
2. It's recommended to control the amount of essential oil and run out within 45 days, in order to avoid the deterioration of essential oils by oxidation.

Accessory

Item	Power adapter	PE seal ring	User manual	Atomizer core
Image				

Touch-control mode setting

Initial state: it shows standby state(in red light) when powered on.

Enter settings: press SET key, a short beep remind the operation, then adjust the Low Medium/High gear, each gear automatically shuts down after 8 hours of default working.

Restore the settings: long press SET for 8 seconds, the light flashes three times and three short beeps, then all device data will be reset.



office



living room



shop



hotel

Download the APP



Scan the QR code to
download the APP



Search for "Scent Share" in the APP
store to download the APP

https://www.xxiot.tech/scentshare/app_download.html

Bluetooth-control mode setting

Bluetooth connection: Use the APP to connect to Bluetooth when the device is powered on(or in touch-control mode), the default password is "9999" and the current time will be automatically synchronized with the phone time.

Reminder of connection: The Bluetooth indicator flashes three times while connecting, the light is continuously on and three short beeps to indicate a successful connection.

※If the device is turned off in Bluetooth mode, the machine will still work based on the previous setting of Bluetooth-control mode when it is turned on again.

Switch to touch-control mode from Bluetooth-control mode

If there is no program lock on APP, please short press the SET button(on device) to enter into the touch-mode.

If there is a program lock on APP, please long-press SET button(on device) for 8 seconds to reset all the data, then to operate the device as touch-control mode setting.

※ Bluetooth-control setting has higher priority than touch-control setting.

※ Reset the program in APP:

The default setting is 8:00-22:00 for the first period, work from Monday to Sunday, work time 60 seconds, pause time 120 seconds, no other period settings.

※ Restore the settings:

Long press the SET button for 8 seconds to reset all data to the initial state, that is, the default touch-control mode, Low gear, no Bluetooth connection.

Function of Bluetooth APP

Flexible adjustment:

5 working periods can be set randomly.

Any workday combination can be selected from Monday to Sunday,

Work time can be selected from 5 seconds to 300 seconds, and pause time can be selected 5 seconds to 900 seconds.

Operation reminder: a short beep when the APP data is transmitted.

More functions: modify APP connection password, lock program, device naming, notes and so on, please learn the operation through APP.

Malfunction Debugging

Please try to figure out the exact faults before asking for after-service or fixing the device.

Breakdown	Fault	Breakdown	Solution
Not working	<ul style="list-style-type: none">- Check if the power adapter is DC12V-1A, if the DC power interface is well-connected or not.- Check the program setting and see if the device is in work period or not.	Oil leakage	<ul style="list-style-type: none">- Check the match status of oil canister and atomizer, it has to be well-matched and tight-screwed.- Check the seal ring and see if it is damaged or deformed.- Check the atomizer and see if it is damaged or not.
No mist/ only weak mist	<ul style="list-style-type: none">- Check the pump work noise and air flow to see if it is still working and if there is airflow from the air outlet.- Check the atomizer core and tube, to see if it is blocked or broken.- Check the seal ring and see if it is damaged or fall off.	Abnormal noise	<ul style="list-style-type: none">- Check the pump connection inside machine and see if it is loose or matched incorrectly.- Check the pump appearance and work noise and see if it is damaged or not. Please replace a new one if it is damaged.

Maintenance

In order to ensure the best diffusing effect, please check and maintain the device every six months. When replacing a new type of fragrance, or the diffusion is getting weak, please maintain as following steps.

1. Take out oil canister which is spent.
2. Filling industrial alcohol into the canister and clean it.
3. After cleaning the oil canister, fill with low volume alcohol and make the device working for 5-8 minutes. Then turn it off and pour the left alcohol out to finish the device cleaning.

After-sales Service

The warranty is one year after the device departing from manufacturer's factory.

(The delay in shipment or damage caused by the buyer or the buyer's freight forwarder, as well as the force majeure, are not within the scope of this warranty.)

Include: pump, PC board.

Exclude: atomizer, atomizer core, seal ring, adapter, USB cable, canister, whole outer shell and other vulnerable parts, and also other damages which caused by human or their wrong behavior at buyer side.

If there is any after-sales question, please contact the authorized sales service agency in the corresponding area, or initiate an after-sales service request to the upper dealer/retailer.

Warranty Card

Please keep this warranty card carefully for possible need during the use. (This card is the warranty for device's quality maintenance, please fill it with actual information.)

Warranty Card 1		Warranty Card 2	
Start Date of Warranty Period		Start Date of Warranty Period	
Malfunction Description		Malfunction Description	
Date of Inspection		Date of Inspection	
Maintenance Result		Maintenance Result	
Solution		Solution	
Maintenance Staff's Signature		Maintenance Staff's Signature	



SCENT DIFFUSER SA01

This device complies with part 15 of the FCC Rules. Operation is subject to the following two conditions: (1) This device may not cause harmful interference, and (2) this device must accept any interference received, including interference that may cause undesired operation.

Any Changes or modifications not expressly approved by the party responsible for compliance could void the user's authority to operate the equipment.


Note: This equipment has been tested and found to comply with the limits for a Class B digital device, pursuant to part 15 of the FCC Rules. These limits are designed to provide reasonable protection against harmful interference in a residential installation. This equipment generates uses and can radiate radio frequency energy and, if not installed and used in accordance with the instructions, may cause harmful interference to radio communications. However, there is no guarantee that interference will not occur in a particular installation. If this equipment does cause harmful interference to radio or television reception, which can be determined by turning the equipment off and on, the user is encouraged to try to correct the interference by one or more of the following measures:

- Reorient or relocate the receiving antenna.
- Increase the separation between the equipment and receiver.
- Connect the equipment into an outlet on a circuit different from that to which the receiver is connected.
- Consult the dealer or an experienced radio/TV technician for help.

FCC Radiation Exposure statement

The device has been evaluatec to meel general RF exposure requirement. The device can be used in portable exposure condition without restriction.

Documents / Resources

	ScentShare SA01 Scent Diffuser [pdf] User Manual SA01, SA01 Scent Diffuser, Scent Diffuser, Diffuser
-------------------------------------------------------------------------------------	-------------------------------------------------------------------------------------------------------------------------

References

- [User Manual](#)