

SCENTA AE103 Aroma Diffuser



SCENTA AE103 Aroma Diffuser Owner's Manual

[Home](#) » [SCENTA](#) » SCENTA AE103 Aroma Diffuser Owner's Manual 

Contents

- [1 SCENTA AE103 Aroma Diffuser](#)
- [2 Specification](#)
- [3 Bluetooth instruction](#)
- [4 Installation method](#)
- [5 Troubleshooting](#)
- [6 FCC Statement](#)
- [7 Documents / Resources](#)
 - [7.1 References](#)

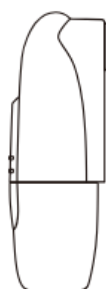
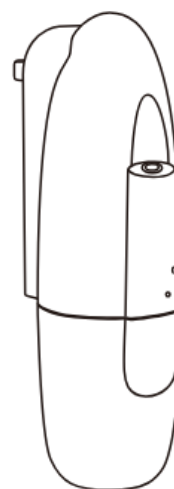


SCENTA AE103 Aroma Diffuser



Specification

【 Model 】	AE103
【 Size 】	122*65*214mm
【 Bottle 】	100ml
【 Input 】	AC100V-240V 50/60Hz
【 Power 】	2W
【 Coverage 】	25m ² /75m ³ /2650ft ³
【 N.W. 】	0.30kg
【 Material 】	plastic



Plug



Atomized head

Grade button

Reset button

Oil bottle

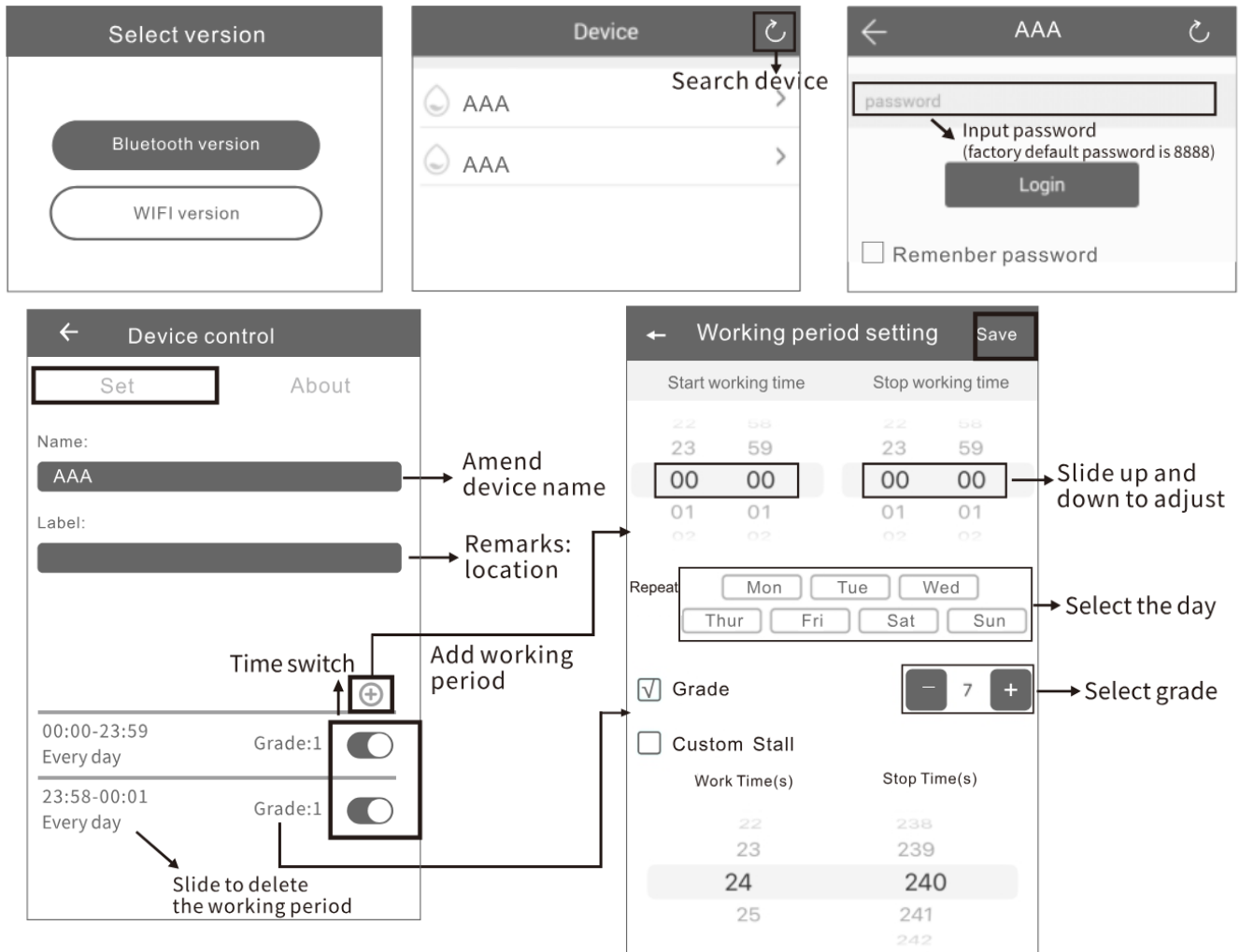
Bluetooth instruction

Where to get the app

Please search for "scent marketing" in Google Play or the App Store.

Note

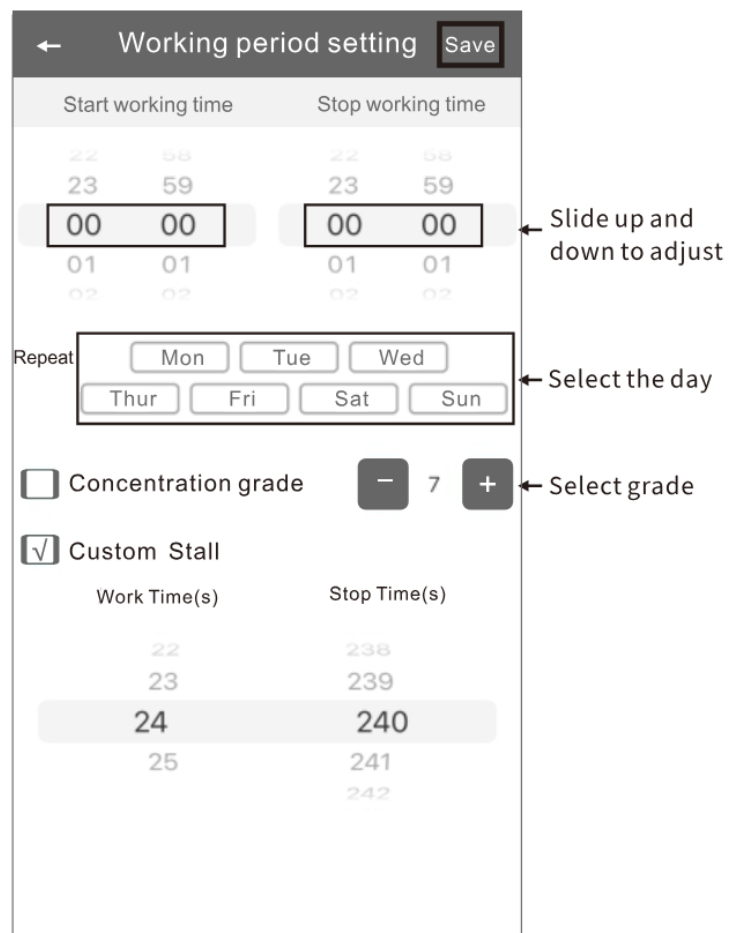
1. Please make sure that the Bluetooth function is turned on



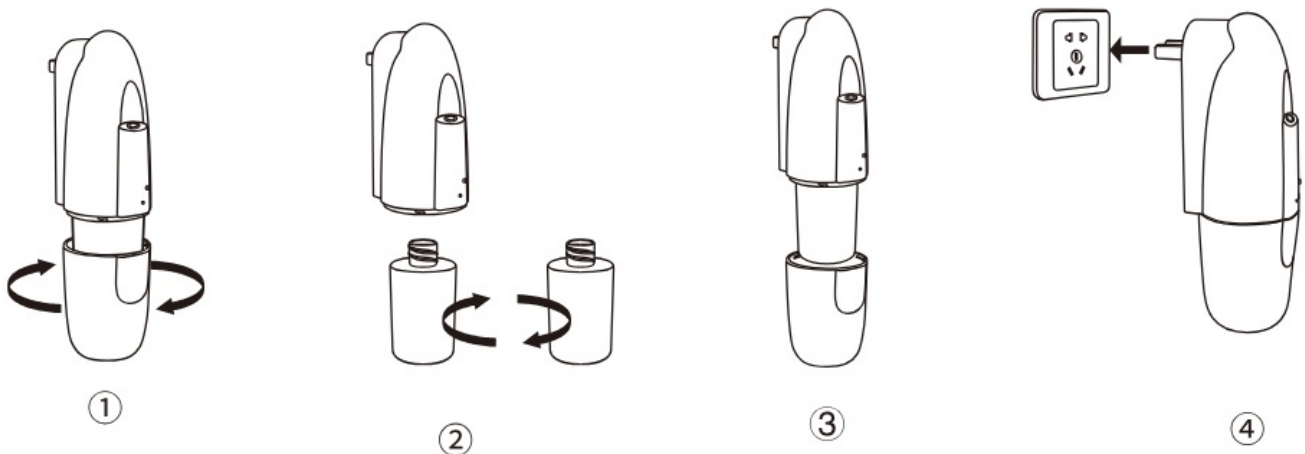
2. Please make sure that the location function of the mobile phone is turned on.

Amend password

If you forget the password, please press the reset button to restore the factory setting. The factory settings password is 8888.



Installation method



1. Unscrew the lower cover;
2. Unscrew the oil bottle to fill or change the essential oils;
3. Screw the oil bottle and the lower cover;
4. Plug in the sockets.

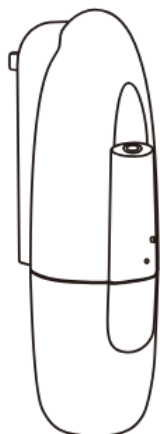
Application place

- Hotel
- Toilet- Aisle
- Meeting room

- Brand store

Operating instructions

APP version: Controlled by APP, more convenient and intelligent



Reset:

- Short press to restore the original password "8888"
- Long press to restore factory setting.

Indicator

- When it is on, it means the machine is during the working period.
- When Bluetooth connects and operates successfully, a "beep" sound is emitted by the machine.

Concentration and consumption

Grade	Work time(s)	Stop time(s)	Consumption(g/h)
G1	15s	285s	0.07
G2	15s	135s	0.15
G3	15s	85s	0.23
G4	15s	60s	0.30
Customized	3-15s	60-900s	—

Notes

1. The working time above of each grade is 15s.
2. Different grades and oils may have different consumption.

Warning

1. Please keep the machine vertical. Tilt or lying flat may cause the oil to overflow. The efficiency of the machine may be affected.
2. Shall not modify, disassemble or repair the machine.
3. Do not use this product under high humidity and high-pressure conditions.
4. It is better to screw the machine on the wall than just stick it via tape; otherwise, the machine will be easy to fall.



Troubleshooting

Before asking to have the machine repaired, please try to diagnose the problem first by following to below instructions.

Symptom	Remedy
Does not diffuse	<ul style="list-style-type: none">- Whether the machine is in “not working period”. If yes, it won't spray.- Check whether the air pump is damaged. If yes, replace it with a new one.
Spray little	<ul style="list-style-type: none">- Check whether the gasket is damaged or loose. Please adjust it or replace it with a new one.- Check whether the atomized core is plugged; clear it with alcohol or replace it with a new one
Oil spill	<ul style="list-style-type: none">- Check whether the atomized head is damaged
Oil overflow	<ul style="list-style-type: none">- Check whether the oil bottle is loose, please install it correctly- Check whether the gasket of the atomized head is damaged; if yes, please replace it with another one.- Please keep the machine vertical; Tilt or lie flatly will cause the oil overflow

Equipment cleaning

The machine needs to be cleaned when the below situations happen:

1. You're about to change to another kind of essential oil;
2. The atomization volume becomes weak.

Cleaning steps

1. Pull out the atomized head, and loose the bottle.
2. Find a larger container and fill the industrial alcohol up, then soak the bottle for 5-10mins.
3. Airing the bottle.

FCC Statement

This device complies with part 15 of the FCC Rules. Operation is subject to the following two conditions:

- (1) This device may not cause harmful interference, and
- (2) this device must accept any interference received, including interference that may cause undesired operation.

This equipment has been tested and found to comply with the limits for a Class B digital device, under part 15 of the FCC Rules. These limits are designed to provide reasonable protection against harmful interference in a residential installation. This equipment generates, uses and can radiate radio frequency energy and, if not installed and used by the instructions, may cause harmful interference to radio communications. However, there is no guarantee that interference will not occur in a particular installation. If this equipment does cause harmful interference to radio or television reception, which can be determined by turning the equipment off and on, the user is encouraged to try to

correct the interference by one or more of the following measures:

- Reorient or relocate the receiving antenna.
- Increase the separation between the equipment and the receiver.
- Connect the equipment to an outlet on a circuit different from that to which the receiver is connected.
- Consult the dealer or an experienced radio/TV technician for help.

FCC Caution: Any changes or modifications not expressly approved by the party responsible for compliance could void the user's authority to operate the equipment. This transmitter must not be co-located or operating in conjunction with any other antenna or transmitter.

RF Exposure

This device complies with FCC radiation exposure limits set forth for an uncontrolled environment. This equipment should be installed and operated with a minimum distance of 20cm between the radiator & your body.

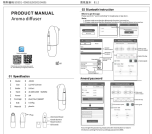
ISED Statement

This device contains licence-exempt transmitter(s)/receiver(s) that comply with Innovation, Science and Economic Development Canada's licence-exempt RSS(s). Operation is subject to the following two conditions:

- (1) This device may not cause interference.
- (2) This device must accept any interference, including interference that may cause undesired operation of the device. The digital apparatus complies with Canadian CAN ICES – 3 (B)/NM B-3(B).

This device meets the exemption from the routine evaluation limits in section 2.5 of RSS 102 and compliance with RSS 102 RF exposure, users can obtain Canadian information on RF exposure and compliance. This equipment should be installed and operated with a minimum distance of 20cm between the radiator & your body.

Documents / Resources

	SCENTA AE103 Aroma Diffuser [pdf] Owner's Manual AE103 Aroma Diffuser, AE103, Aroma Diffuser, Diffuser
---	---

References

- [User Manual](#)

Manuals+, Privacy Policy

This website is an independent publication and is neither affiliated with nor endorsed by any of the trademark owners. The "Bluetooth®" word mark and logos are registered trademarks owned by Bluetooth SIG, Inc. The "Wi-Fi®" word mark and logos are registered trademarks owned by the Wi-Fi Alliance. Any use of these marks on this website does not imply any affiliation with or endorsement.